

---

---

**INFORM but don't  
OVERWHELM**

---

---

# The AK Ecosystem Status Reports - some history

- Began in 1996 - “Ecosystem Considerations Chapter” in groundfish SAFE.
- ESRs through ~2006 focused on collective indicators which were informative on state and success without clear tactical management hooks (e.g. “Trophic Level of the catch”).
- Heavily informed by the Groundfish PSEIS.
- Some formalization through DPSR approach.

# The AK Ecosystem Status Reports - some history

- 2006 -2007 presentations on pollock informed ABC reductions (bottom-up productivity concerns).
- With main receptive audiences being groundfish PTs and SSC in December and an *overwhelming* number of indicators, honed main ESRs to give information in direct stock context.
- More single-species indicators (e.g. direct correlates of recruitment).
- Limited attention on collective “success” metrics.
- Time to revisit success metrics and tie to *ecosystem objectives*.

# Increase in products without “overwhelming”?

- Data - indicator contributions - (ESR bulk text, moving towards online).
- ESR Ecosystem Assessment and Report Cards - contextual synthesis.
  - ESR Report cards - top line trackers of “through the ecosystem” but not necessarily “holistic”. Intent to revisit “every 5 years” (ripe for Bering Sea).
  - No “grading” in current report cards.
  - 4-pagers (synopsys + management uptake)
- ESPs - (Ecosystem and Socio-economic Profiles)
  - Per-species, grades indicators “per species” based on conceptual model for those species
  - Initial versions developed (sablefish), AFSC workshop May 30-31 for other species.
- Targeted at decision points (e.g. groundfish specs)
- **New** Spring PEEC - (Preview of eco and econ conditions - June)
- **New** Risk Tables
- **Proposed new** - Success Report Card (“graded”) tied to **objectives**

---

---

# Draft ecosystem objectives for the FEP

— A starting point for the FEP team —

---

---

---

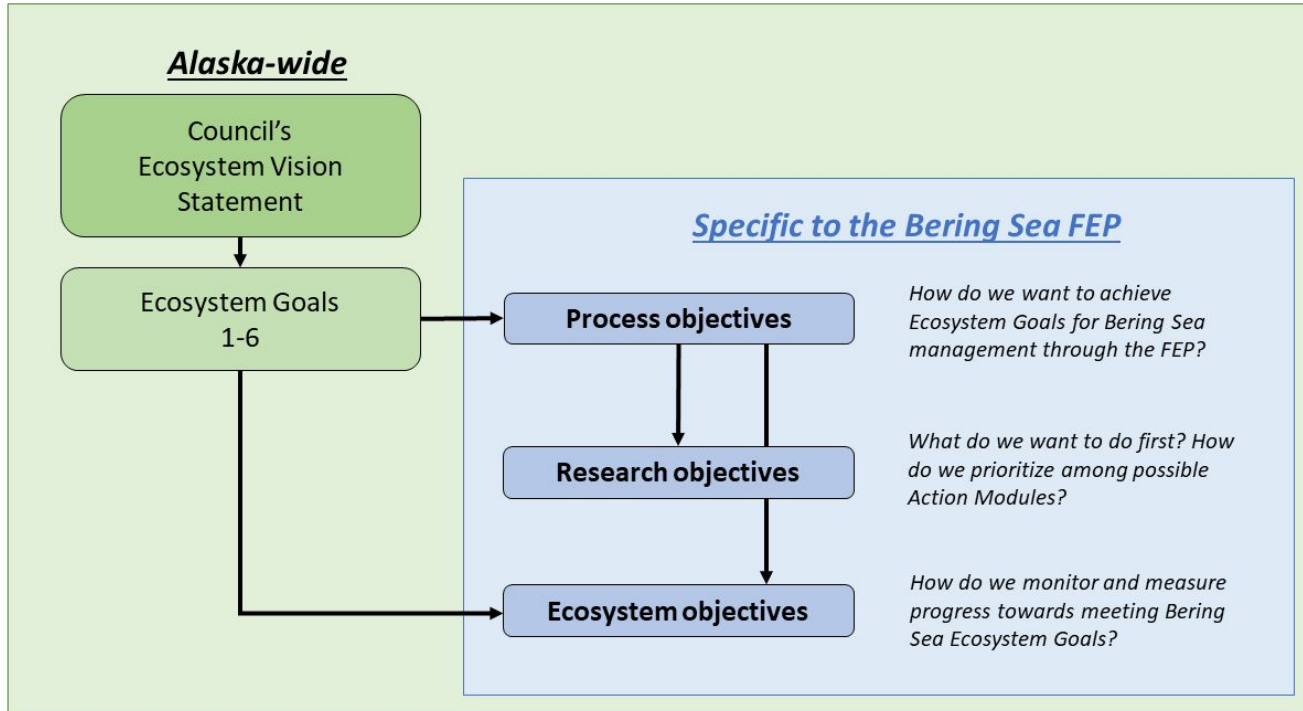
---

**INFORM but don't  
OVERWHELM**

---

---

# Objectives



# Objectives

FEP Table

PSEIS Table

Lenfest working draft



# Indicator and objective mapping

<b>Objective</b>	<b>Status indicator</b>	<b>Trigger/threshold indicator</b>	<b>Success indicator</b>
1. Maintain target biomass levels for target species	Survey biomass, spawning stock biomass	B40, F40	FSSI (across stocks)
5. Conserve structure and function of ecosystem components	Biomass of species guilds?	<i>None: action informing only</i>	Trophic level? Guild balance? Etc...

# Indicator and objective mapping

Objective	Status indicator	Trigger/threshold indicator	Success indicator
1. Maintain target biomass levels for target species	Survey biomass, spawning stock biomass	B40, F40	FSSI (across stocks)
5. Conserve structure and function of ecosystem components	Biomass of species guilds?	<i>None: action informing only</i>	Trophic level? Guild balance? Etc...

## Tasking

- Core FEP tasking (not action module)
- Working group interim meeting? (1-2 year cycle?)
- Interface with ESR team - resources through IEA-funded project
- Interface with other Plan Teams
- Interface with Lenfest team
- Outcome: tracking products proposed to Council cttes (new Report Cards)?
- Feedback to objectives

---

---

**INFORM but don't  
OVERWHELM\***

---

---

\*Stephanie Madsen