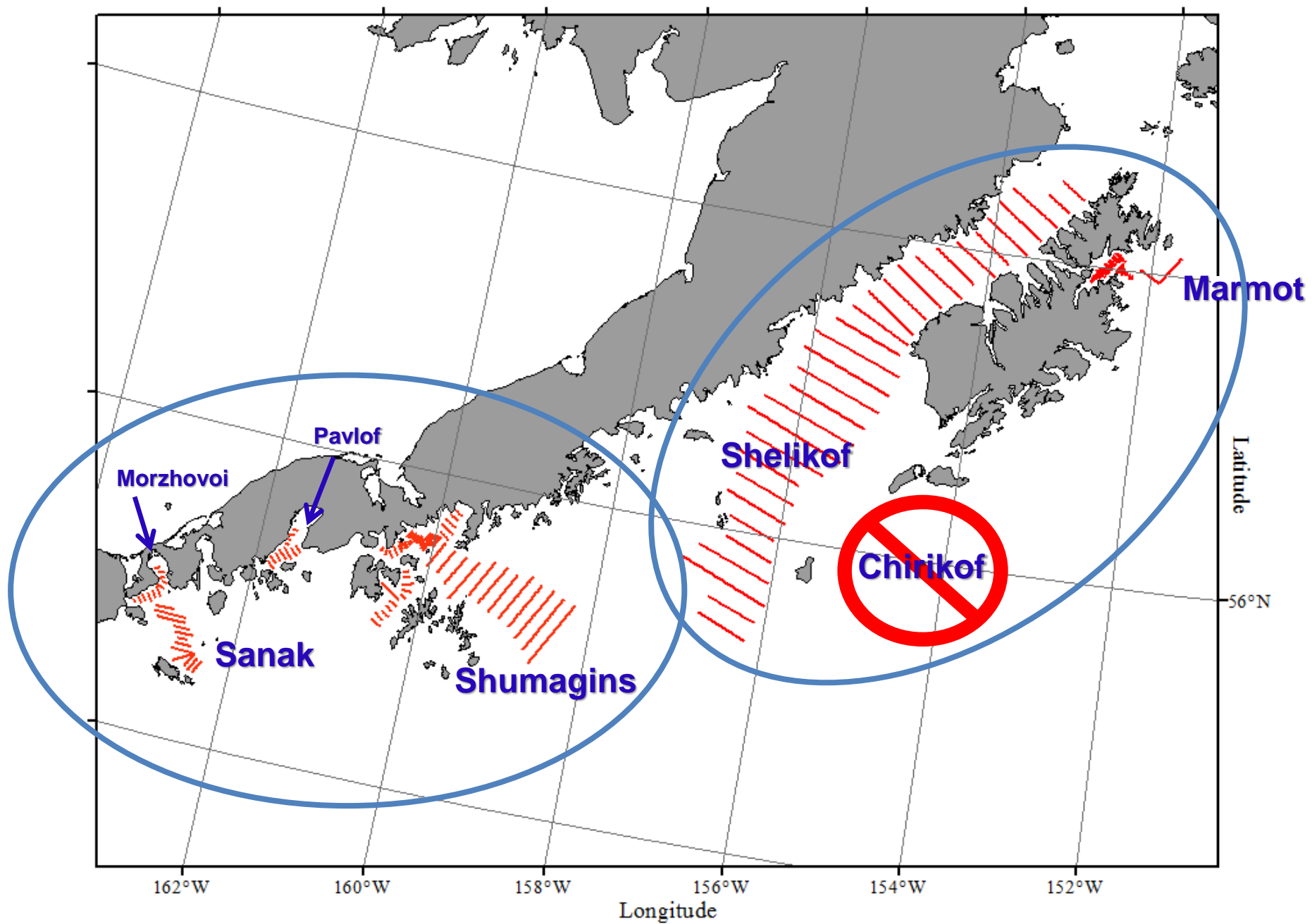


Results of the winter 2018 Acoustic-Trawl Surveys of Walleye Pollock in the Gulf of Alaska



Sarah Stienessen & MACE Staff
Midwater Assessment and Conservation Engineering
Alaska Fisheries Science Center



Shumagins, Sanak, Morzhovoi, and Pavlof

1 tow, 69 nmi of trackline

Feb 11

Feb 12

2 tows, 41 nmi of trackline

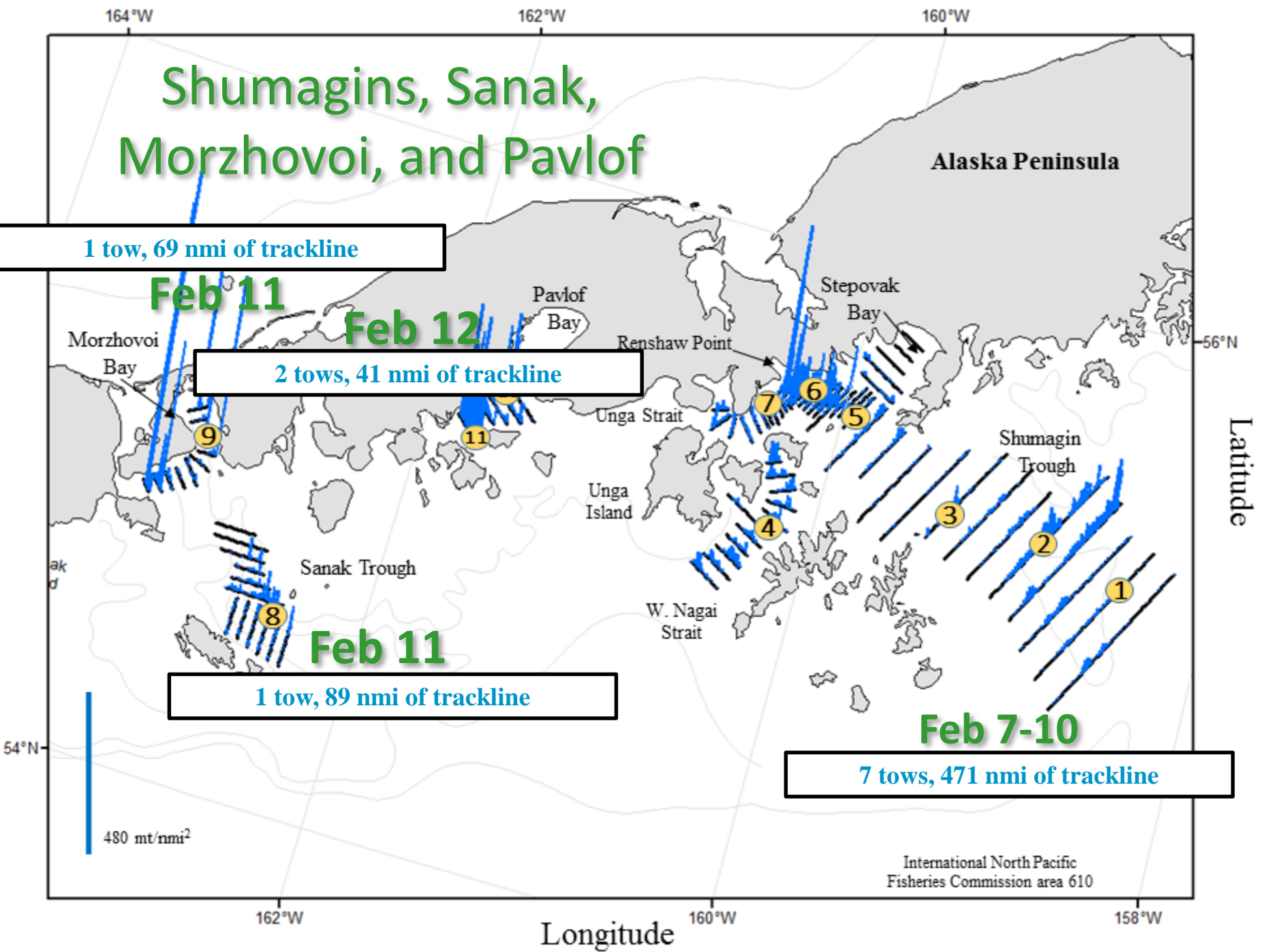
Feb 11

1 tow, 89 nmi of trackline

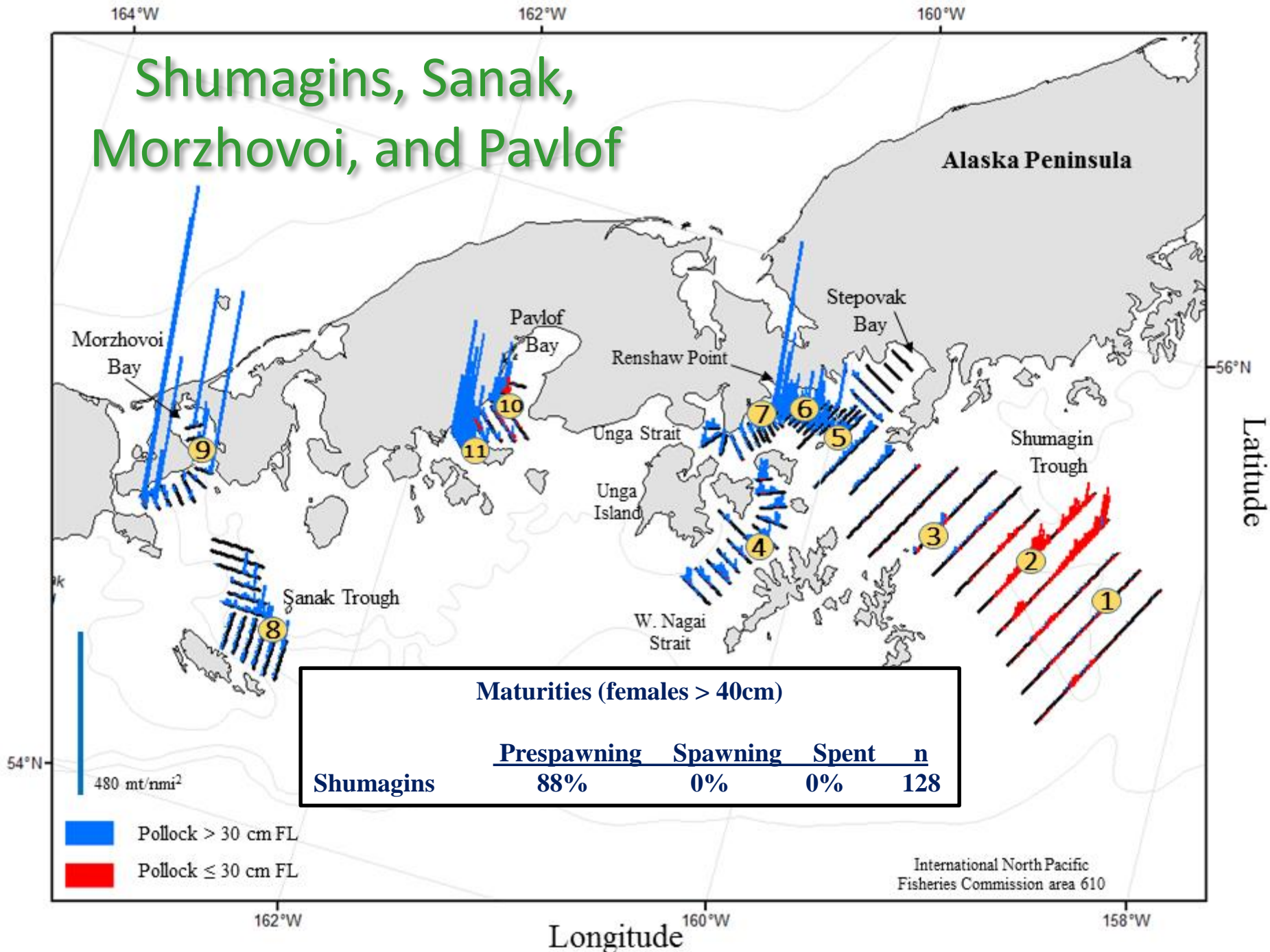
Feb 7-10
7 tows, 471 nmi of trackline

480 mt/nmi²

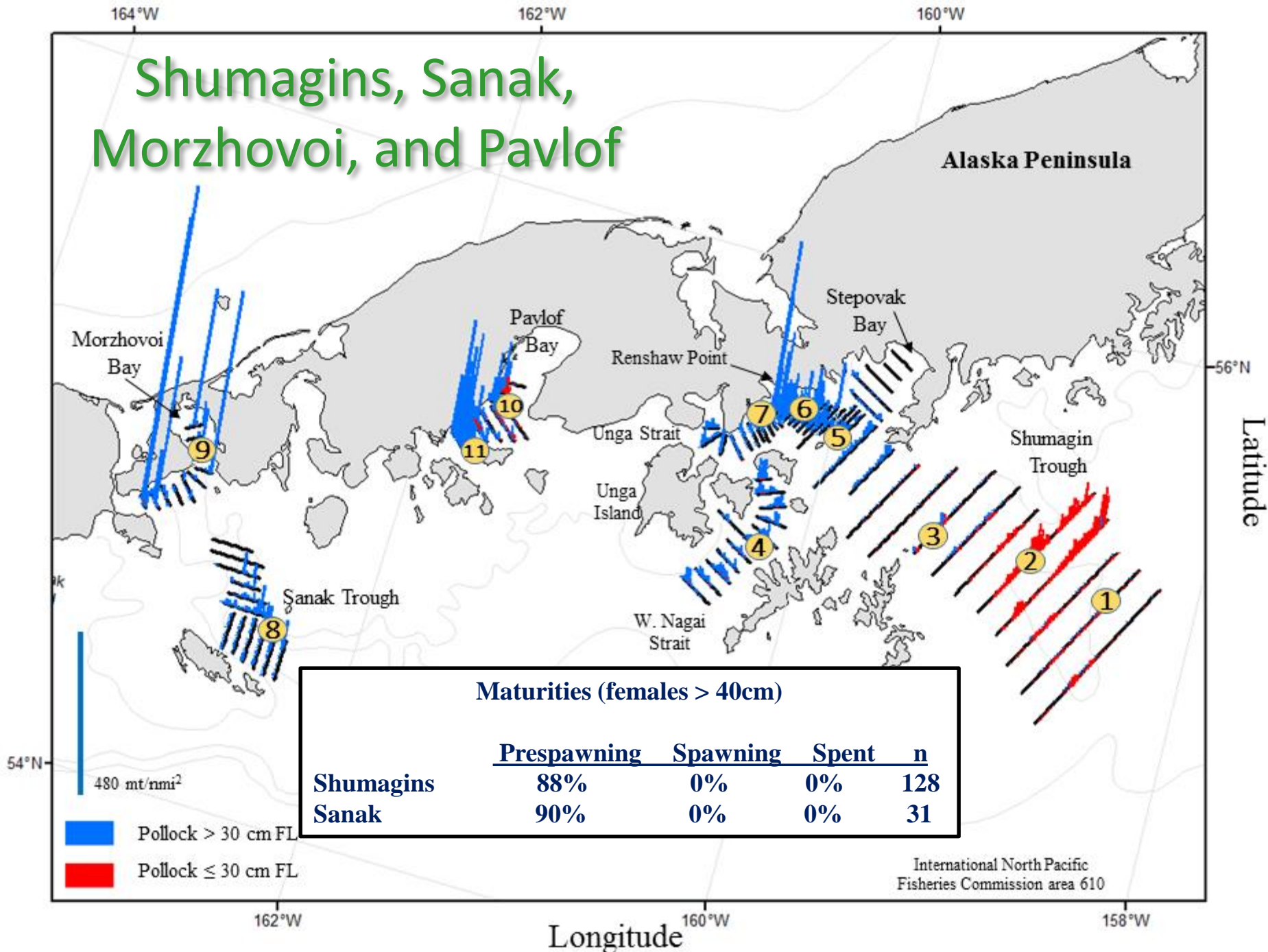
International North Pacific Fisheries Commission area 610



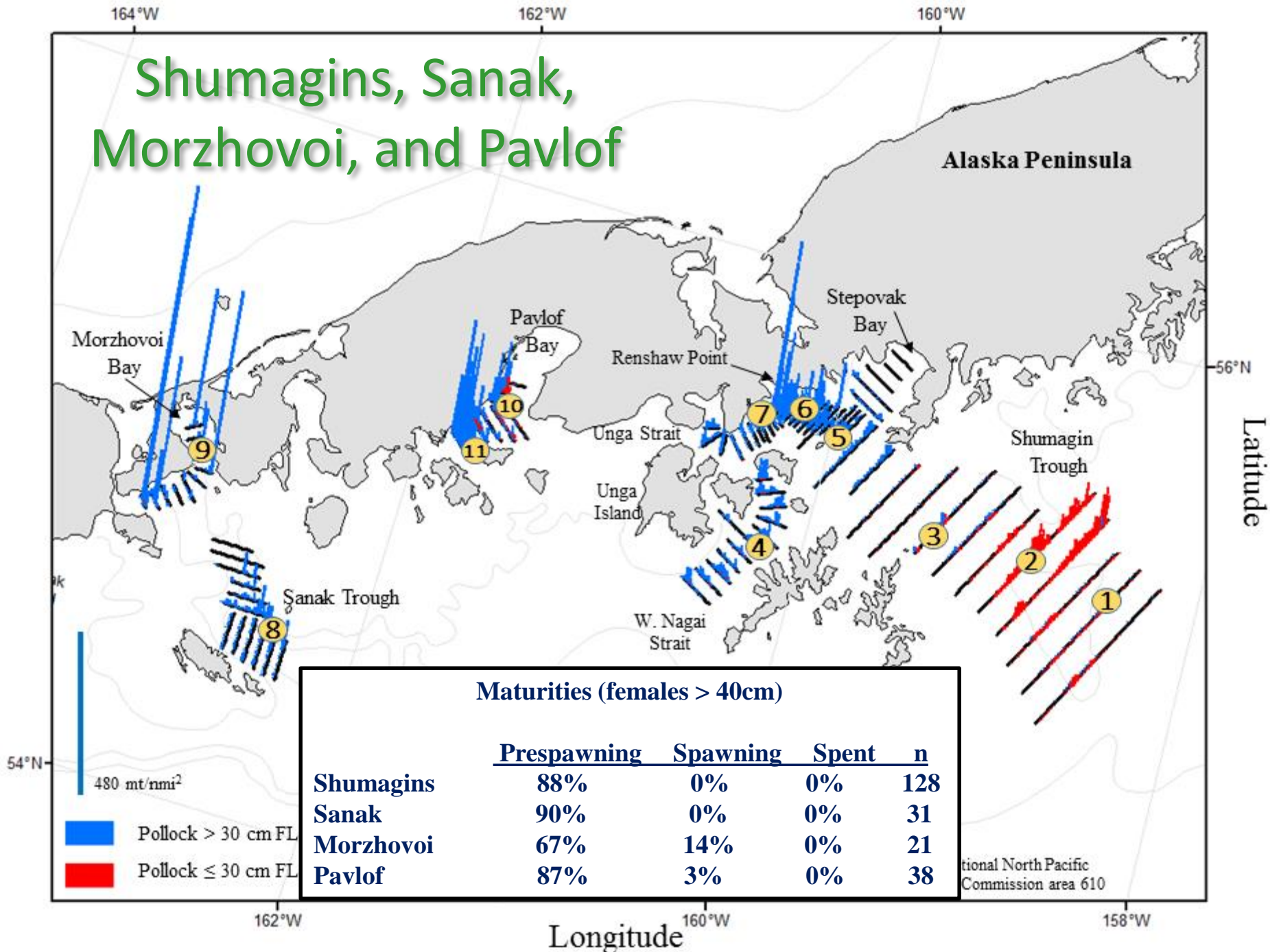
Shumagins, Sanak, Morzhovoi, and Pavlof



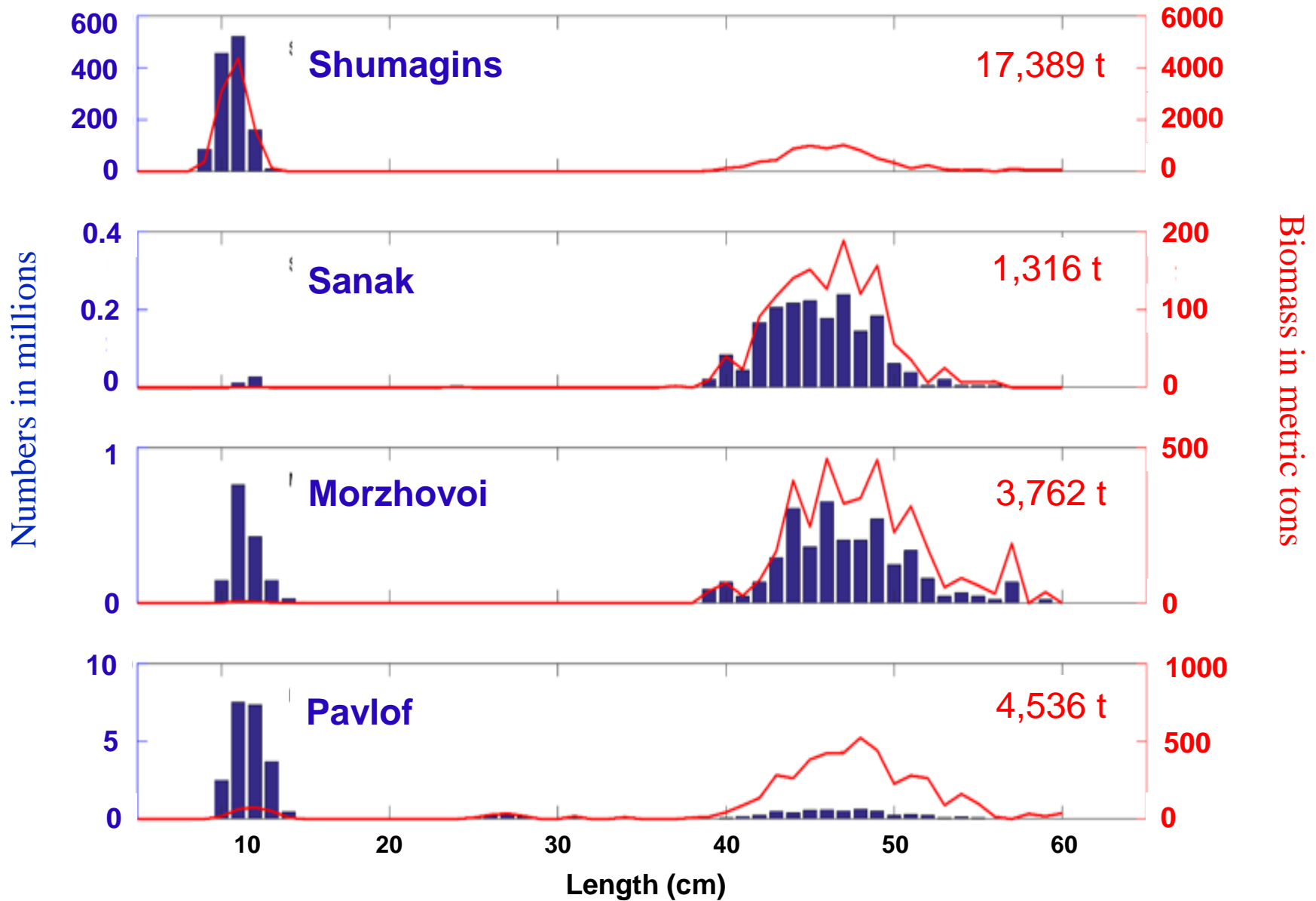
Shumagins, Sanak, Morzhovoi, and Pavlof



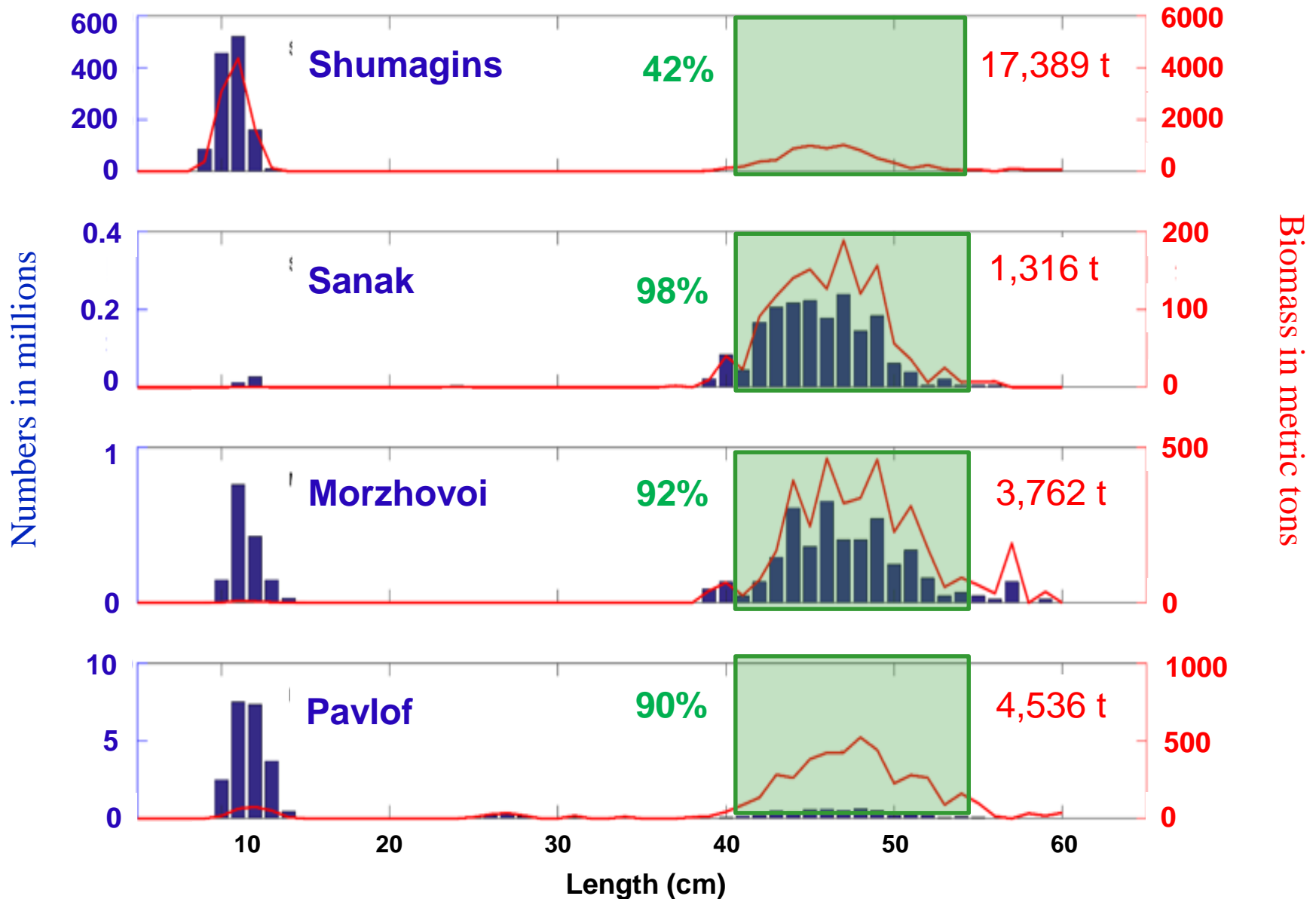
Shumagins, Sanak, Morzhovoi, and Pavlof



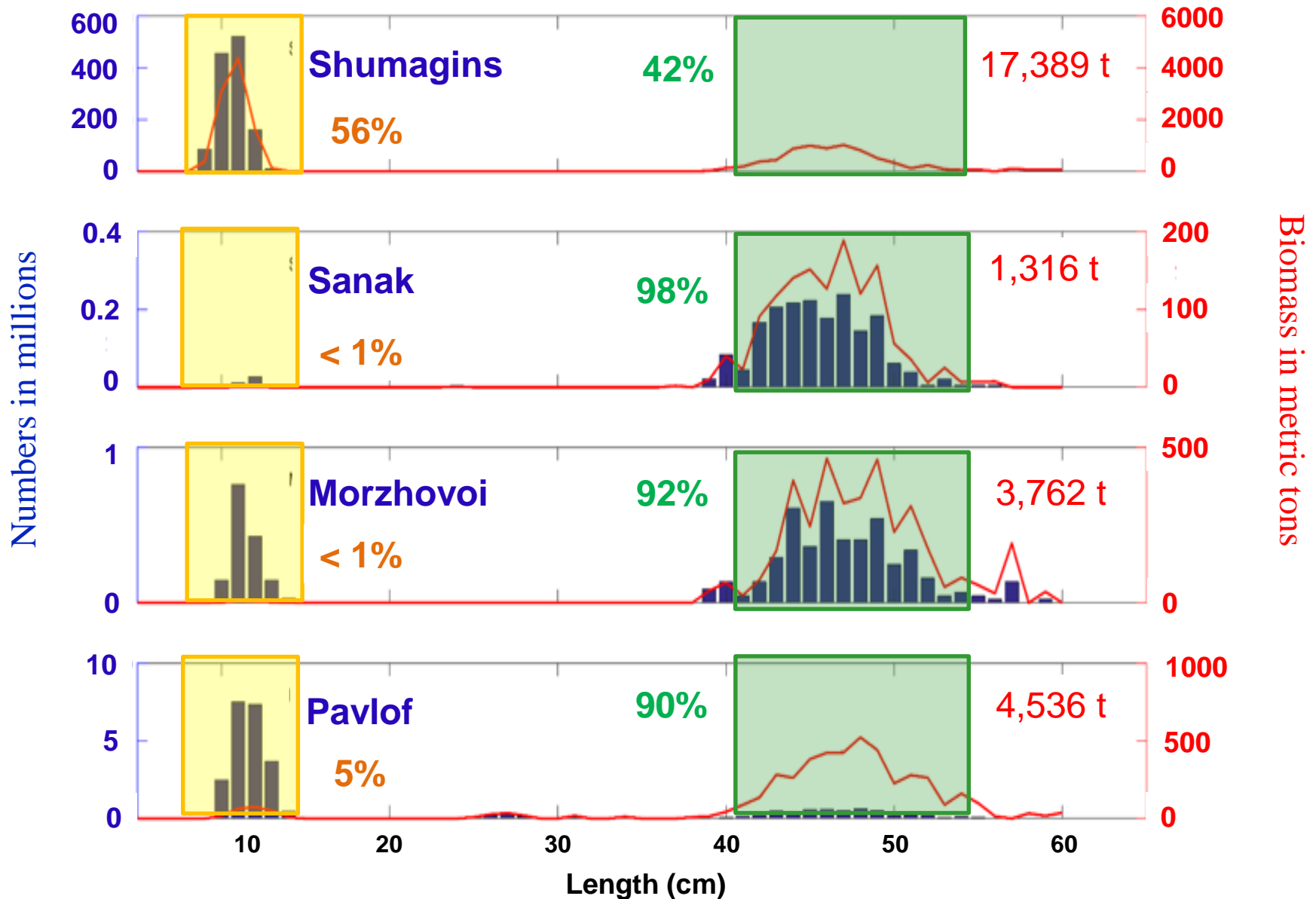
Length Distributions



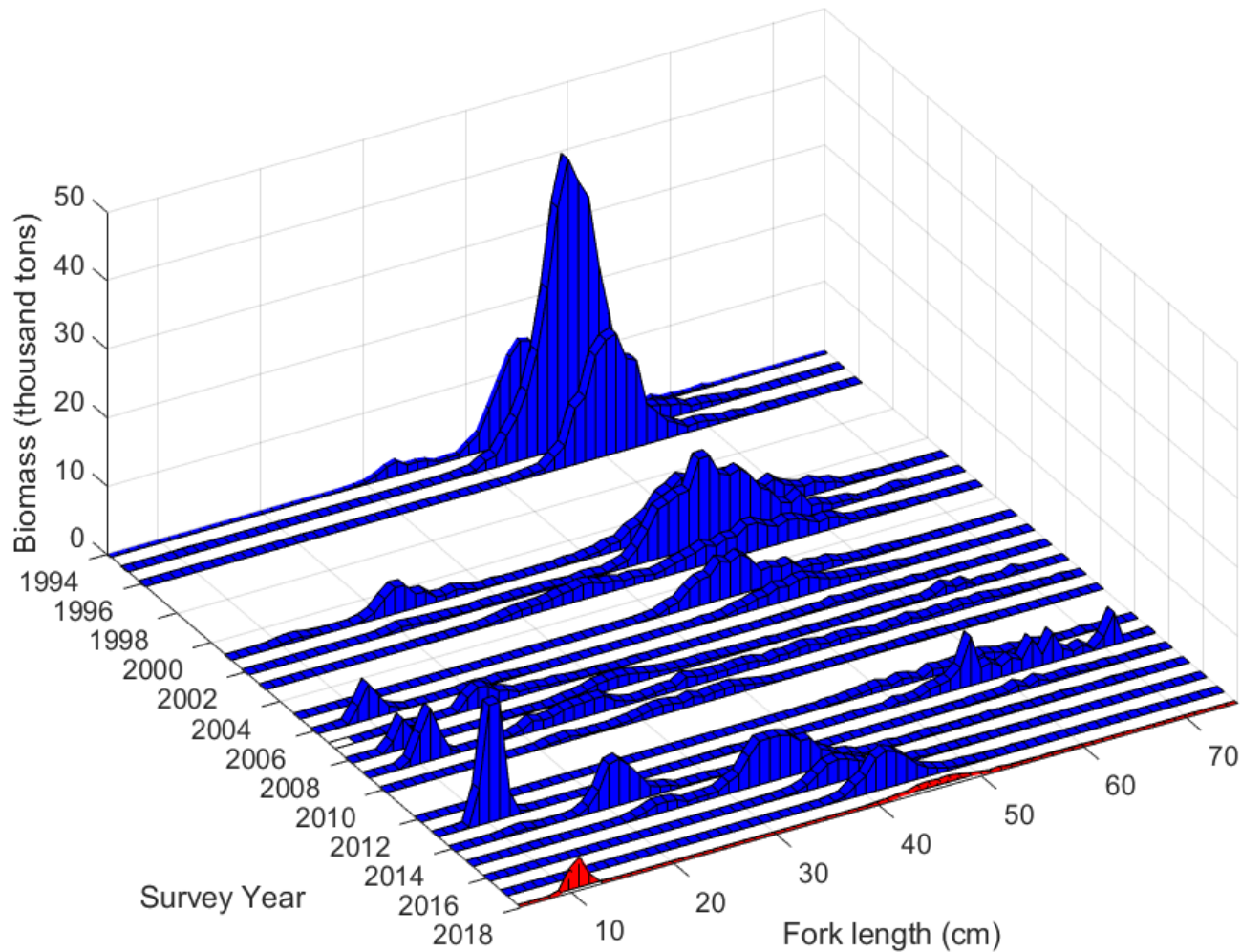
Length Distributions



Length Distributions

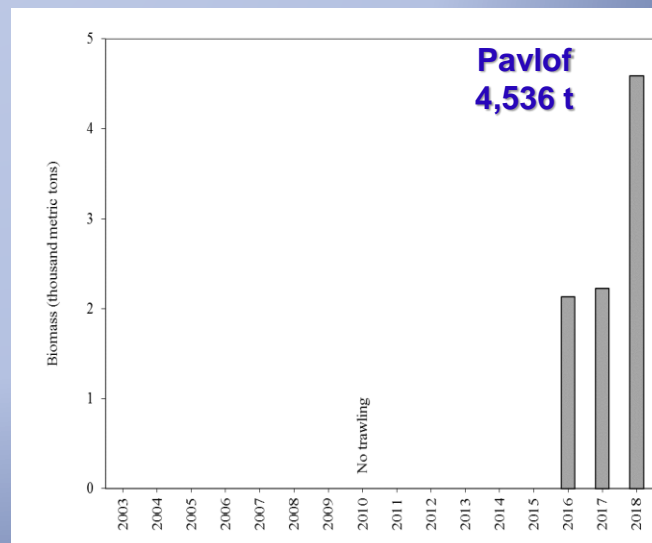
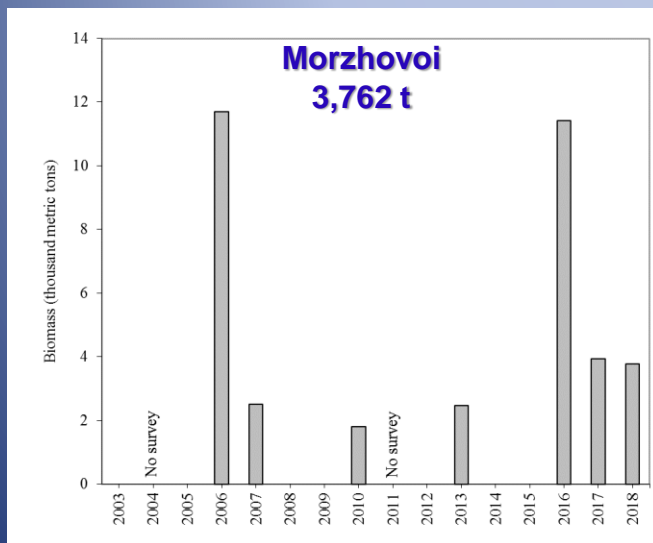
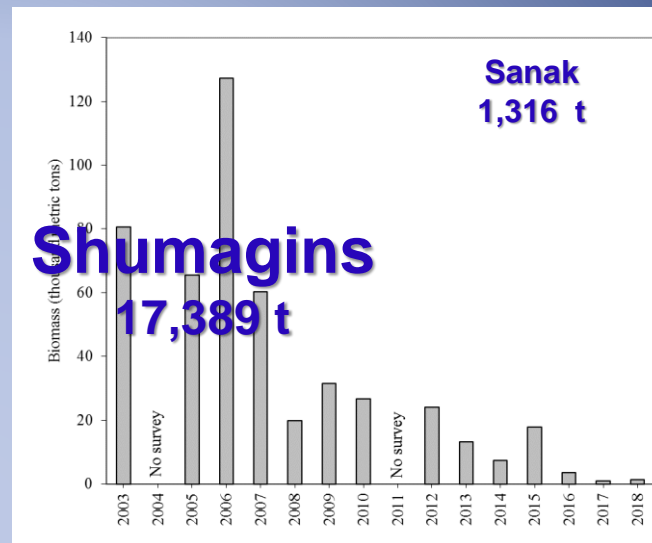
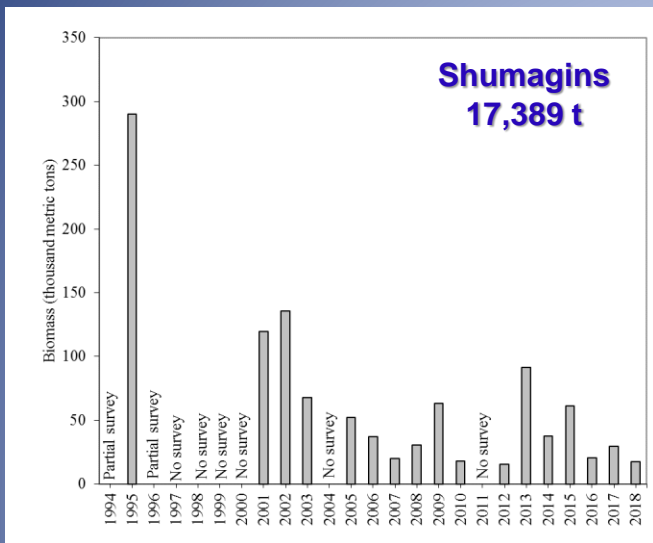


Shumagin Islands Historical Pollock Size Composition

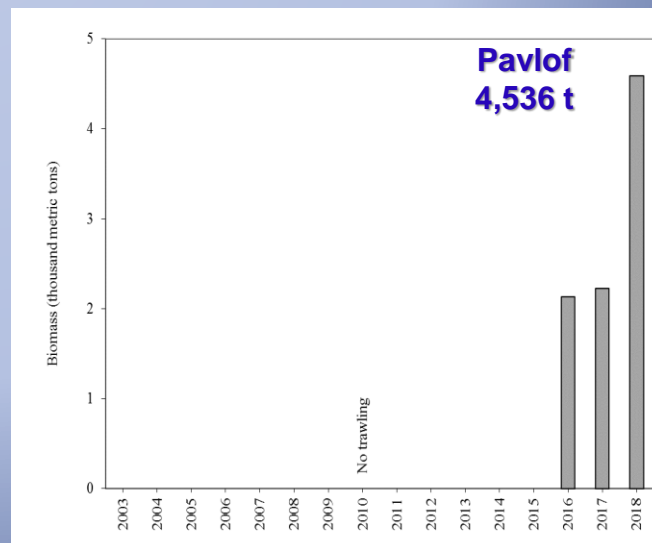
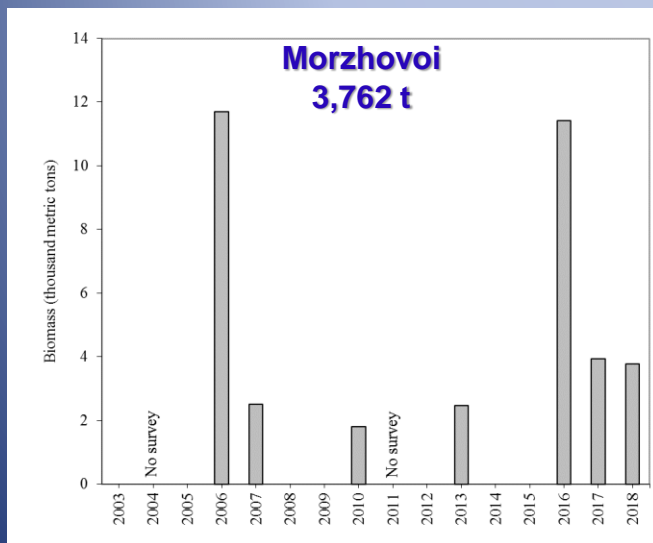
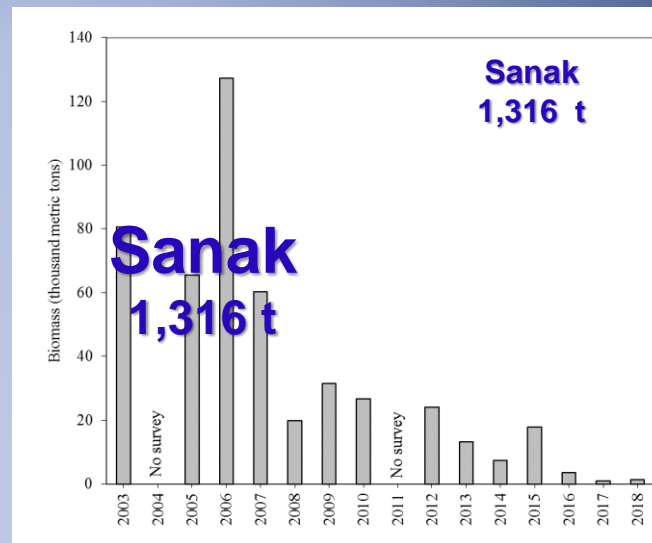
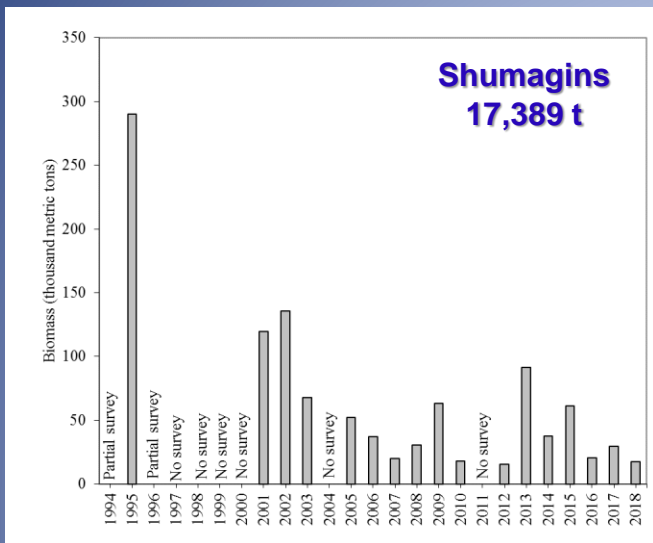


Fork length (cm)

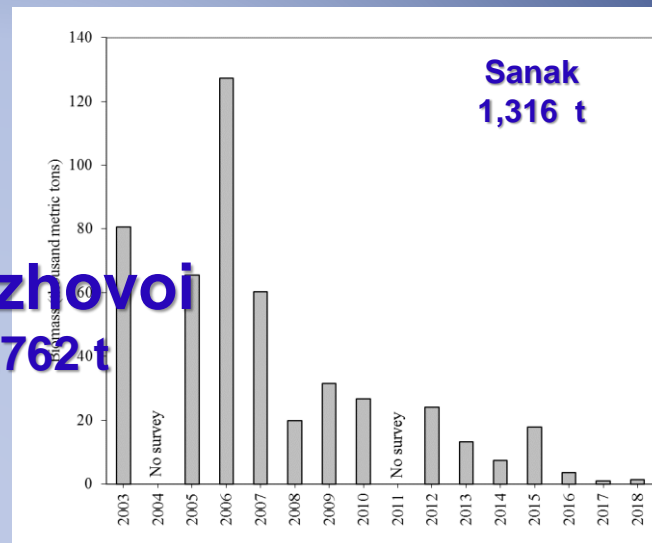
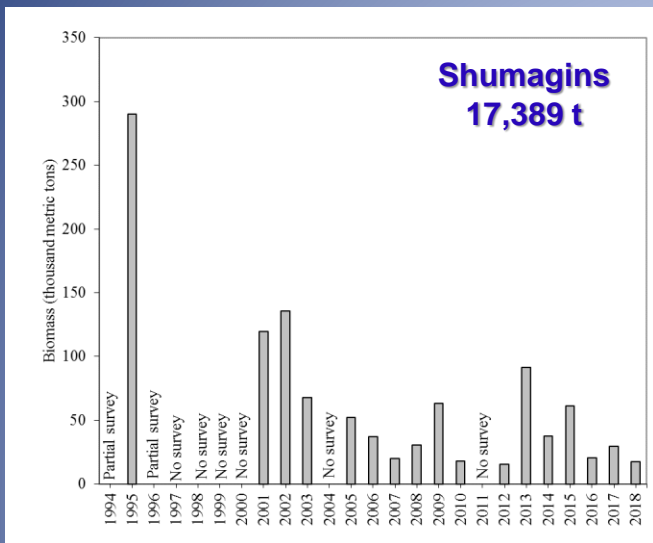
Pollock Biomass Estimates: Time Series



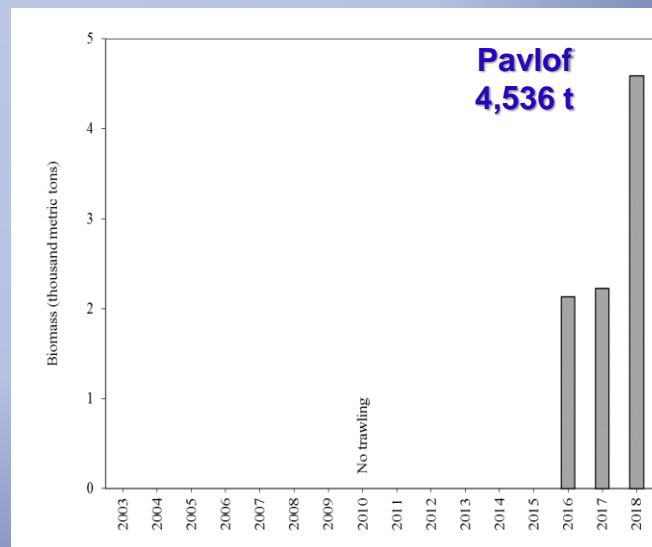
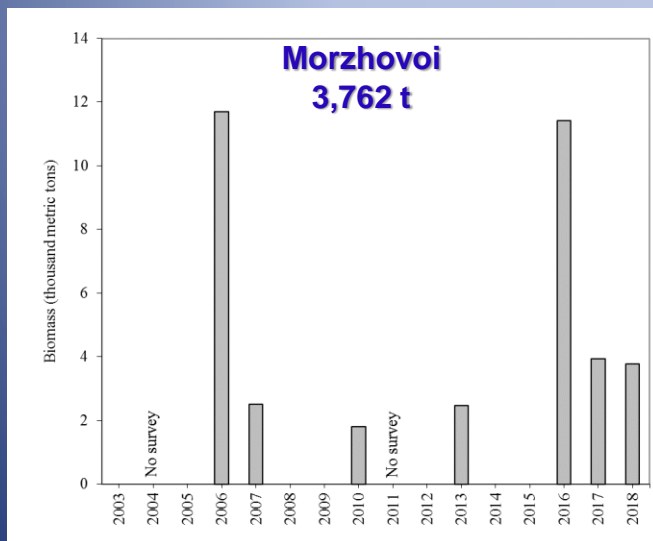
Pollock Biomass Estimates: Time Series



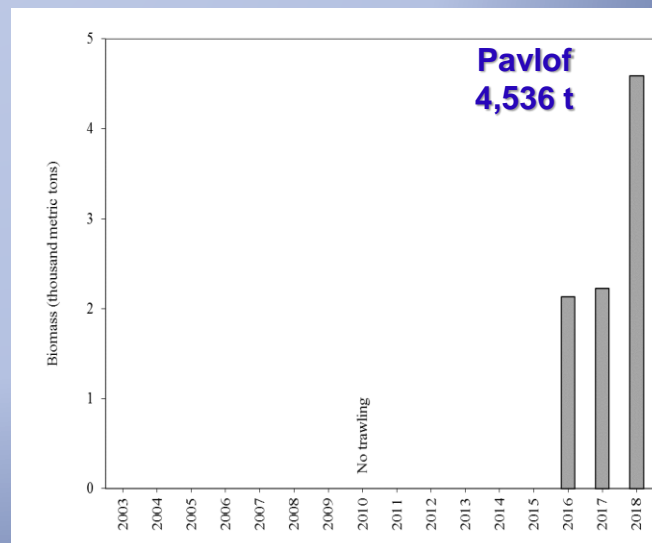
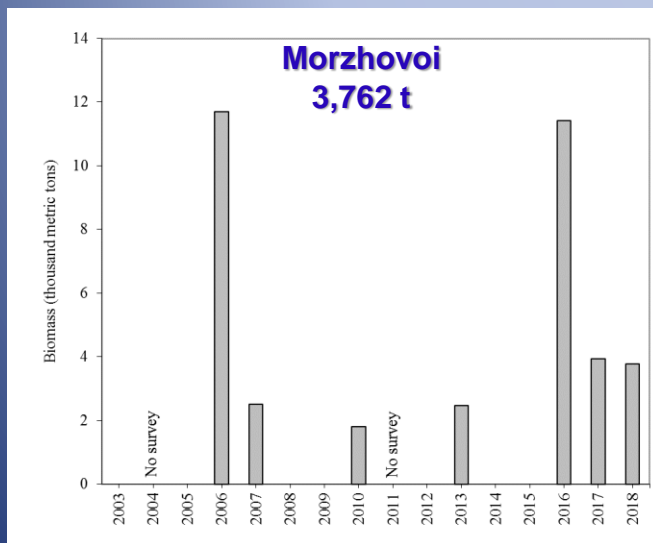
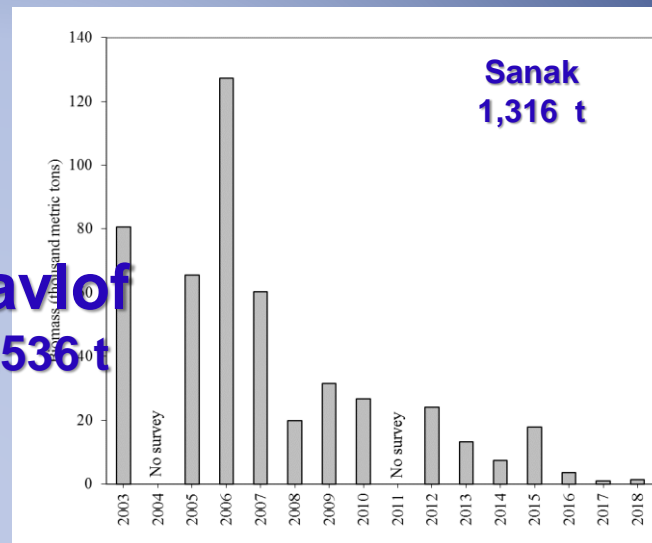
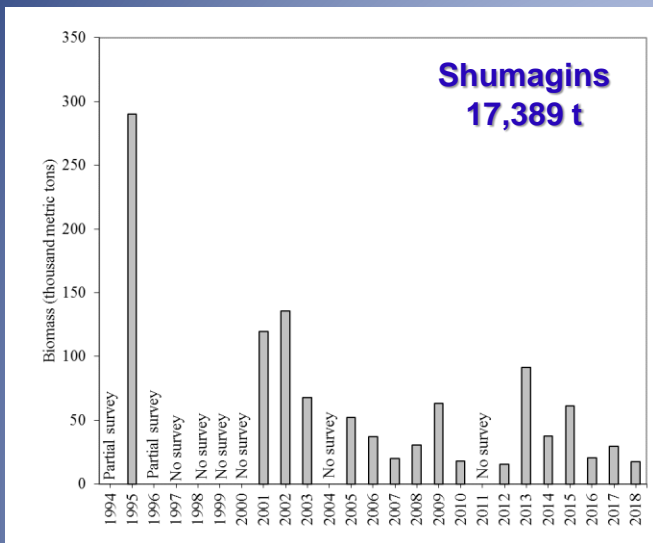
Pollock Biomass Estimates: Time Series



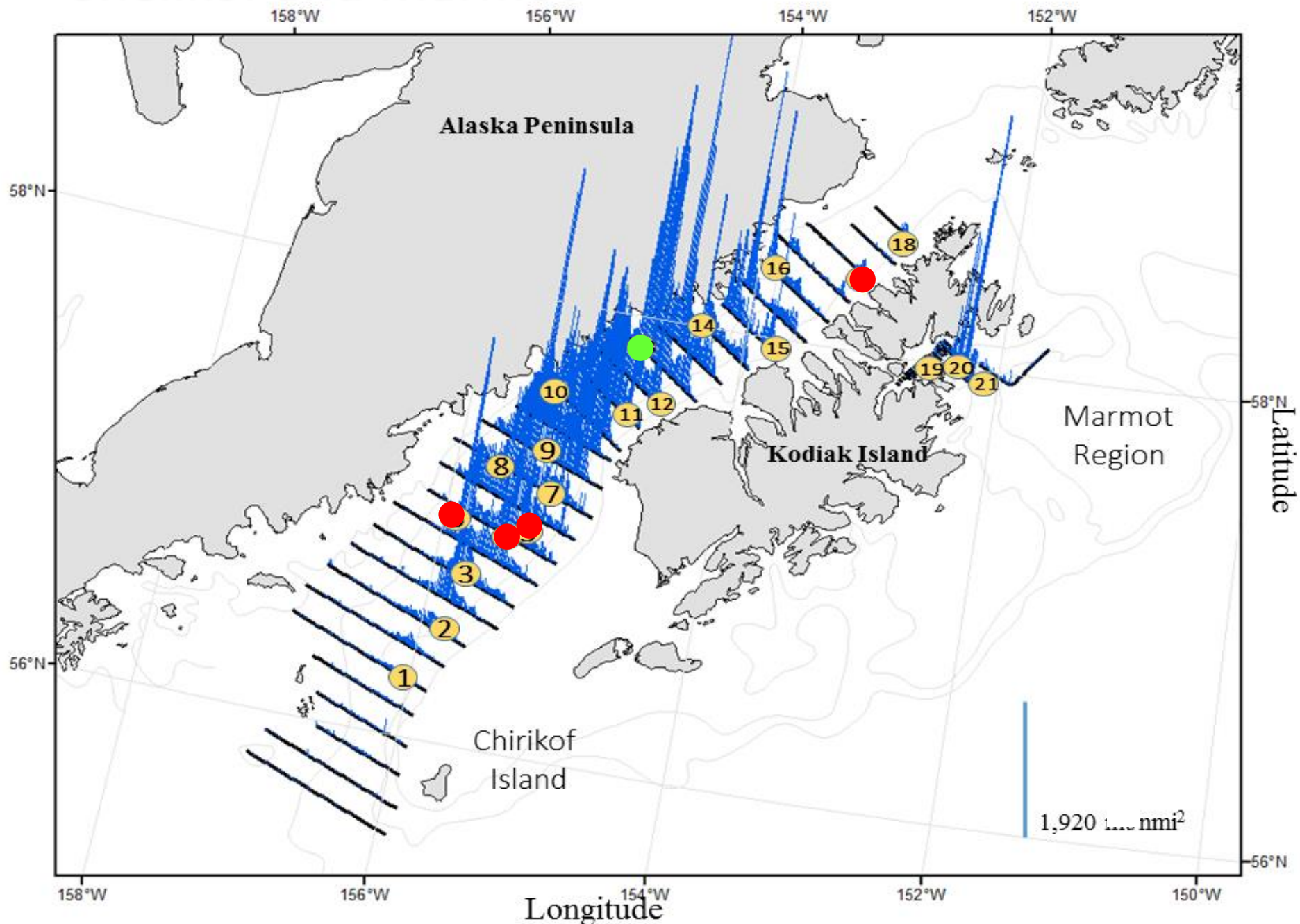
Morzhovoi
3,762 t

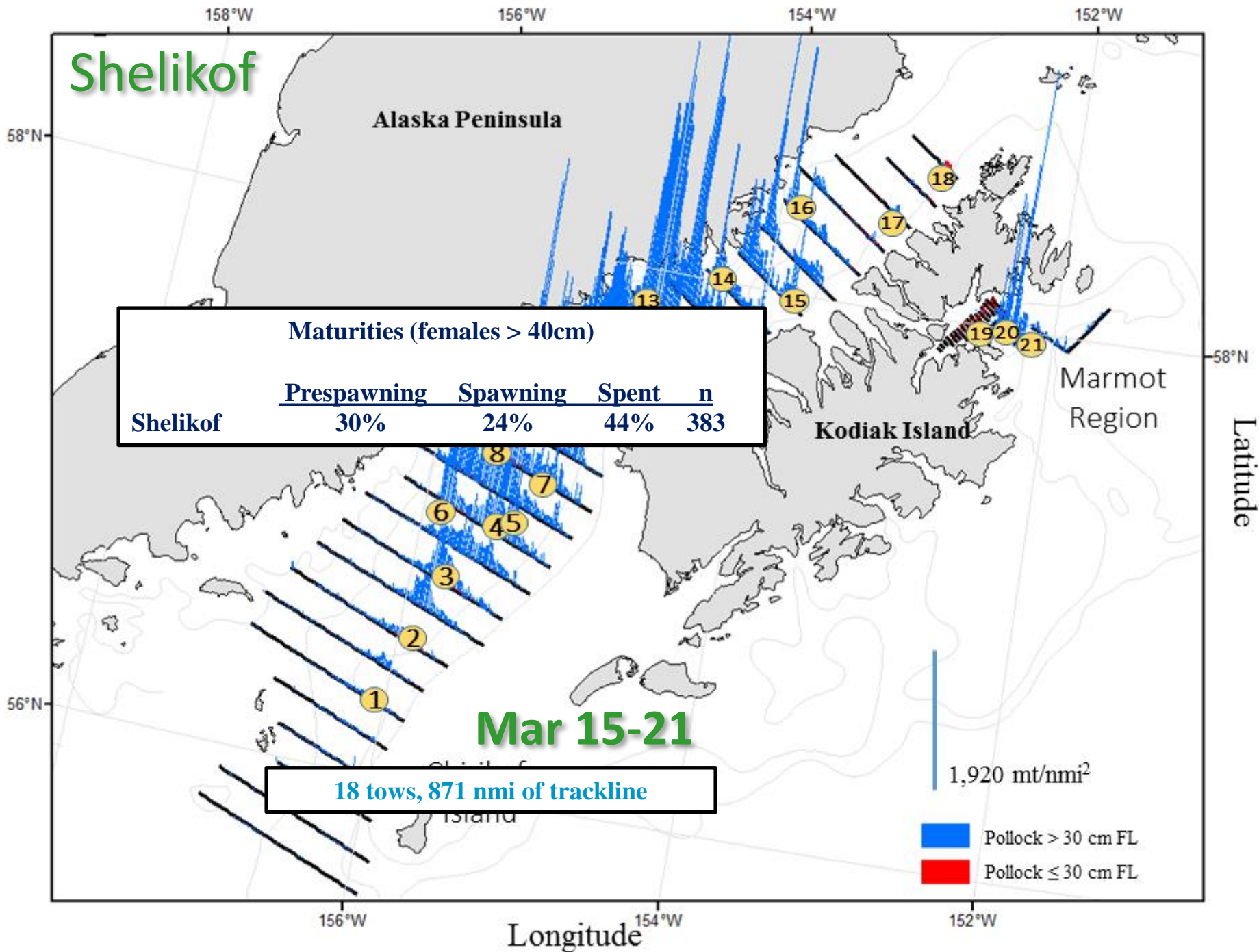


Pollock Biomass Estimates: Time Series

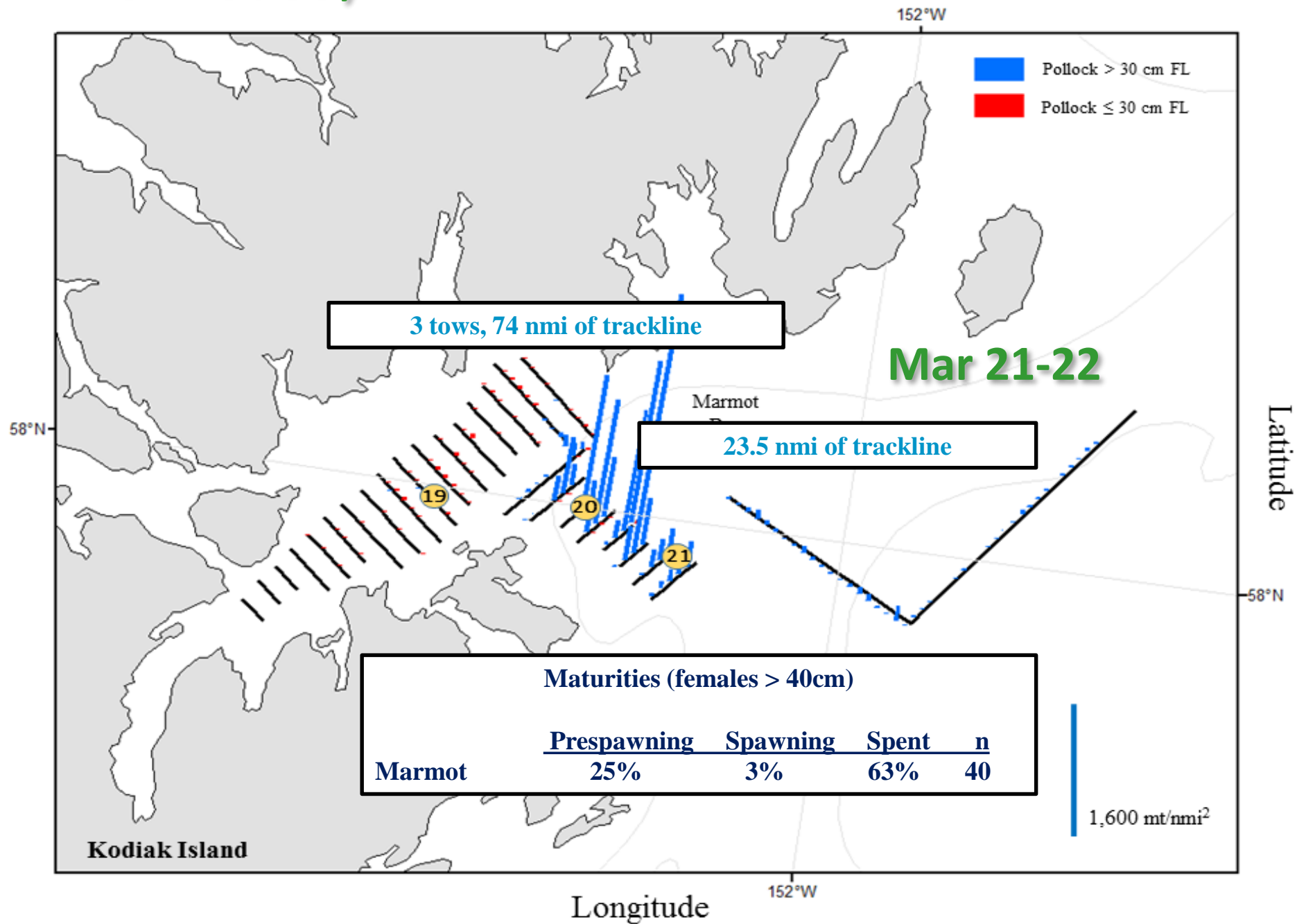


Shelikof and Marmot

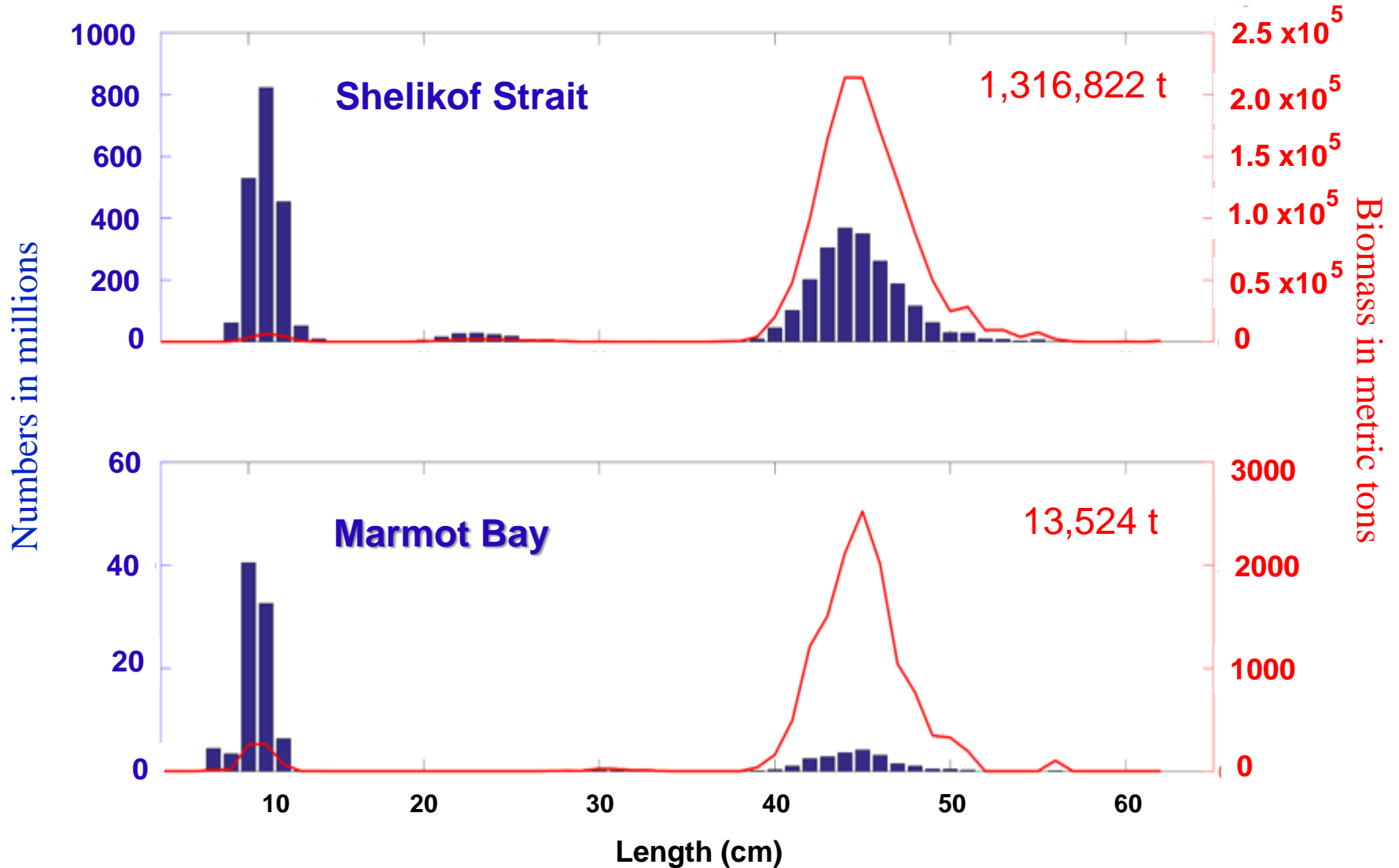




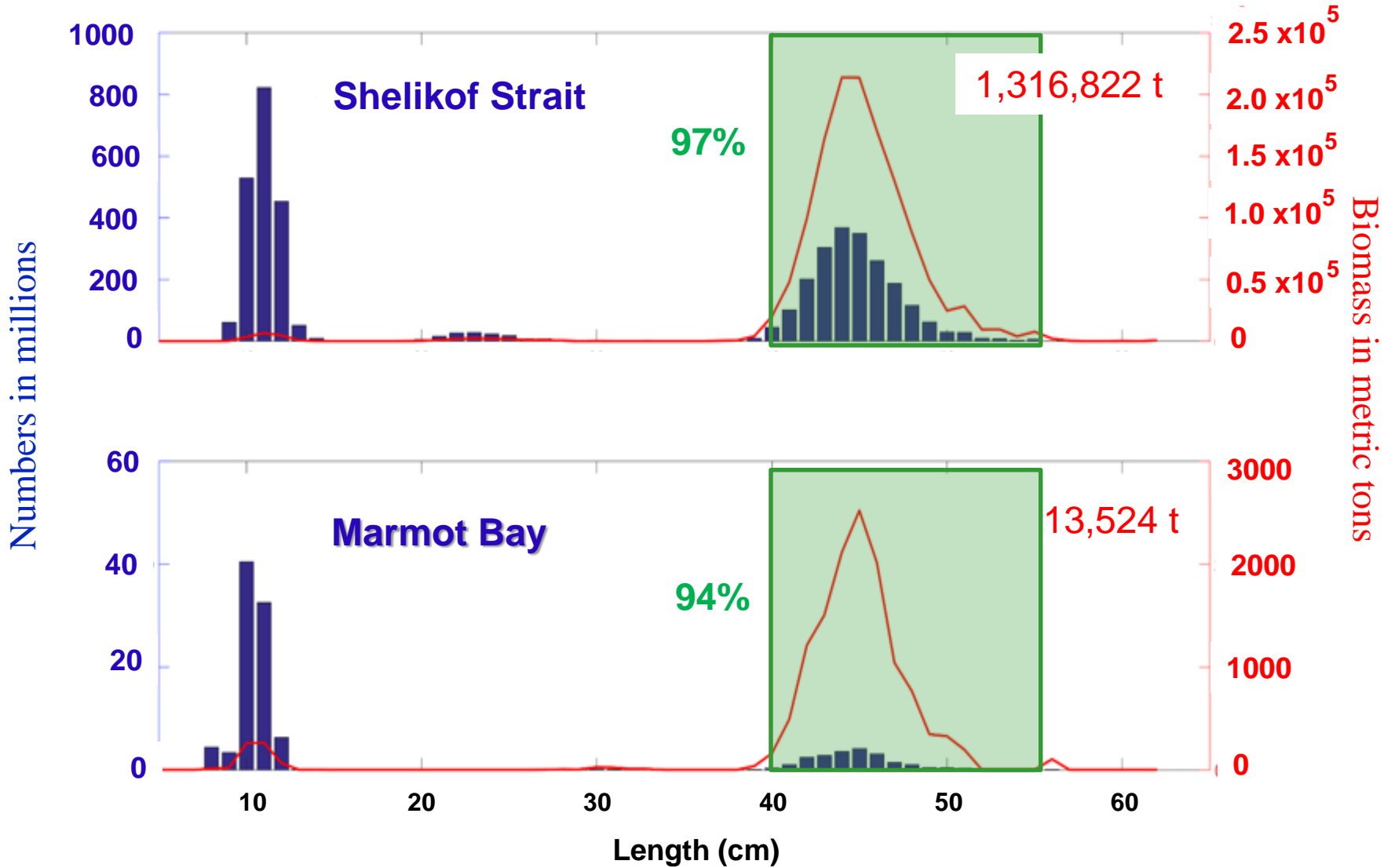
Marmot Bay



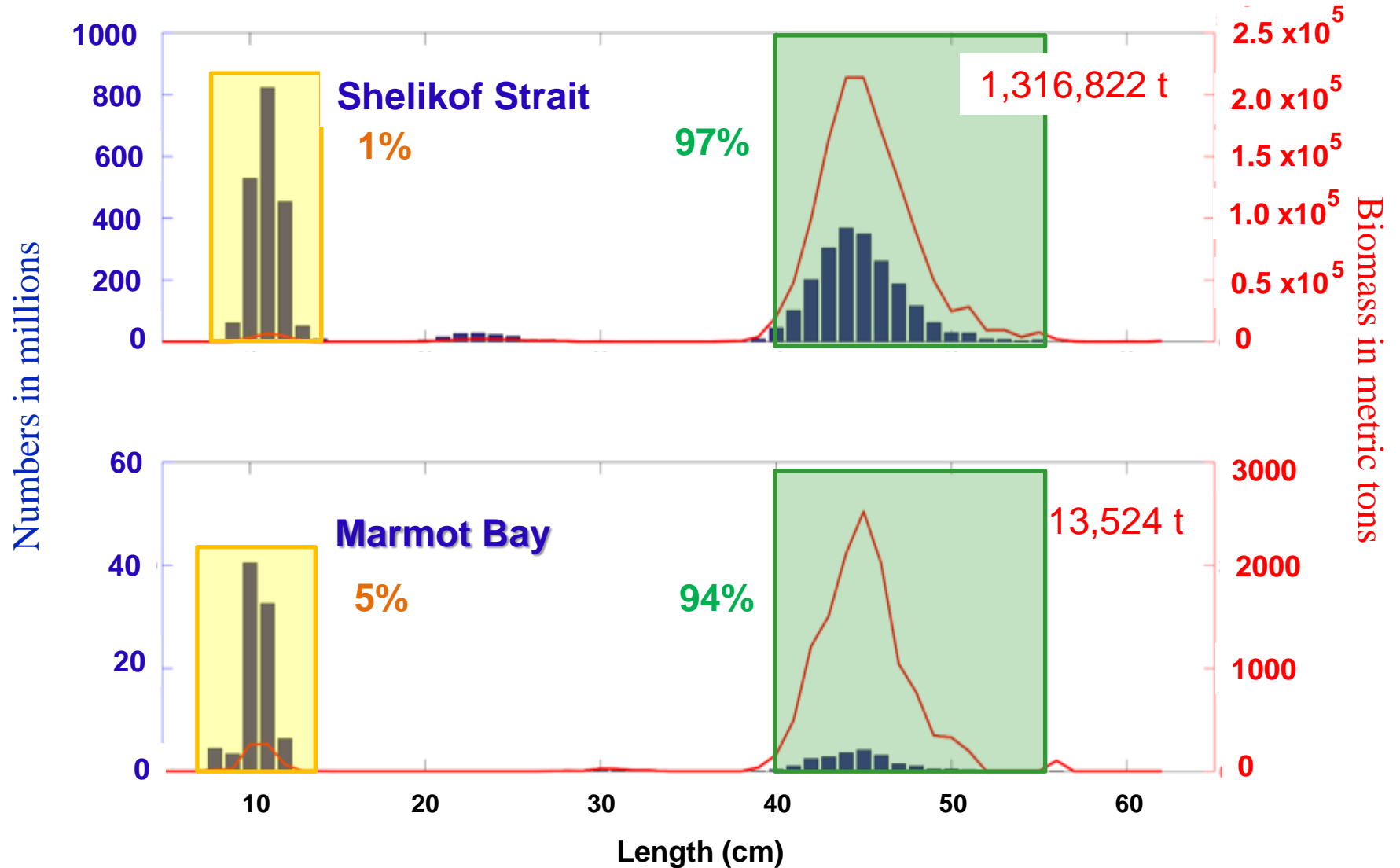
Length Distributions



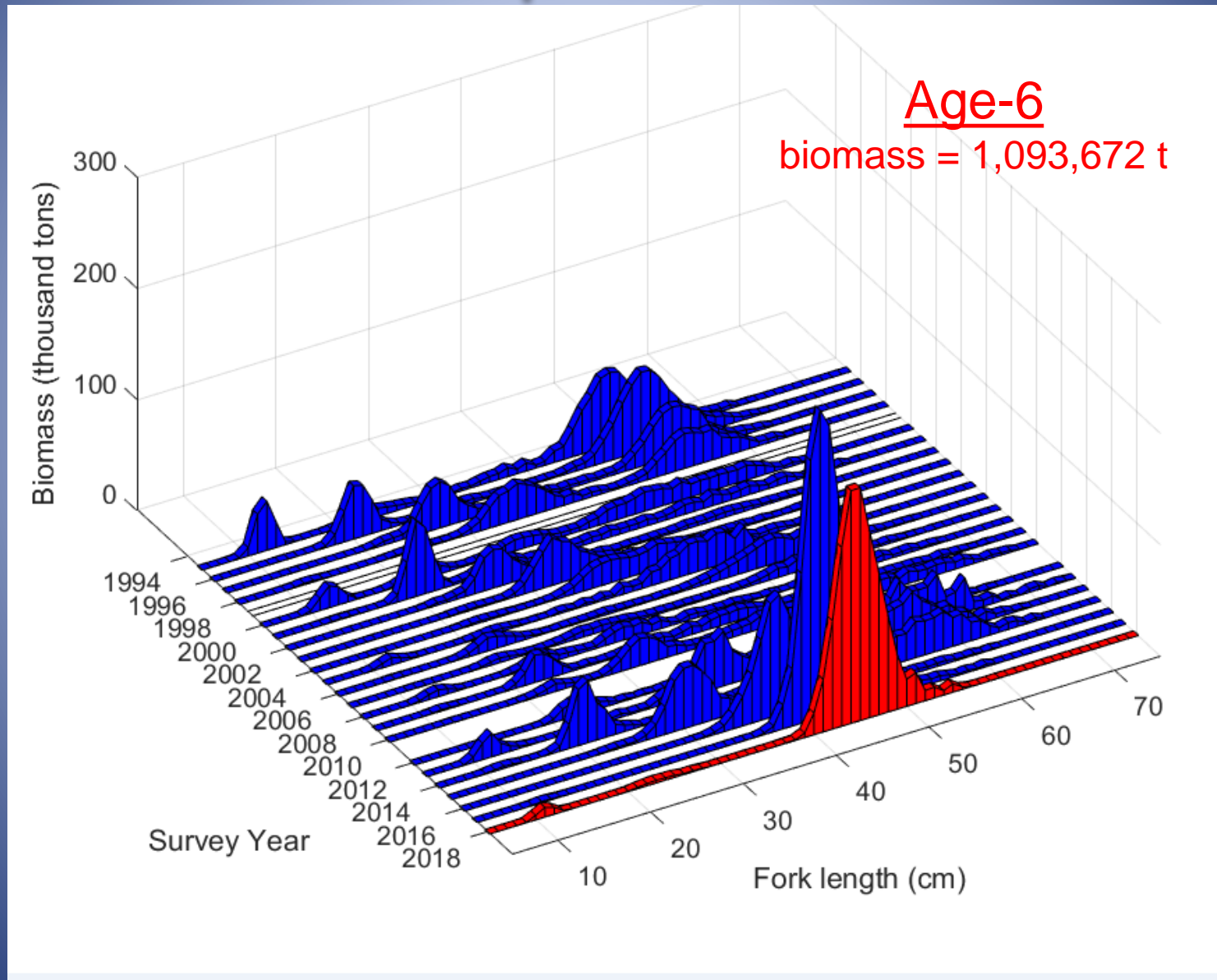
Length Distributions



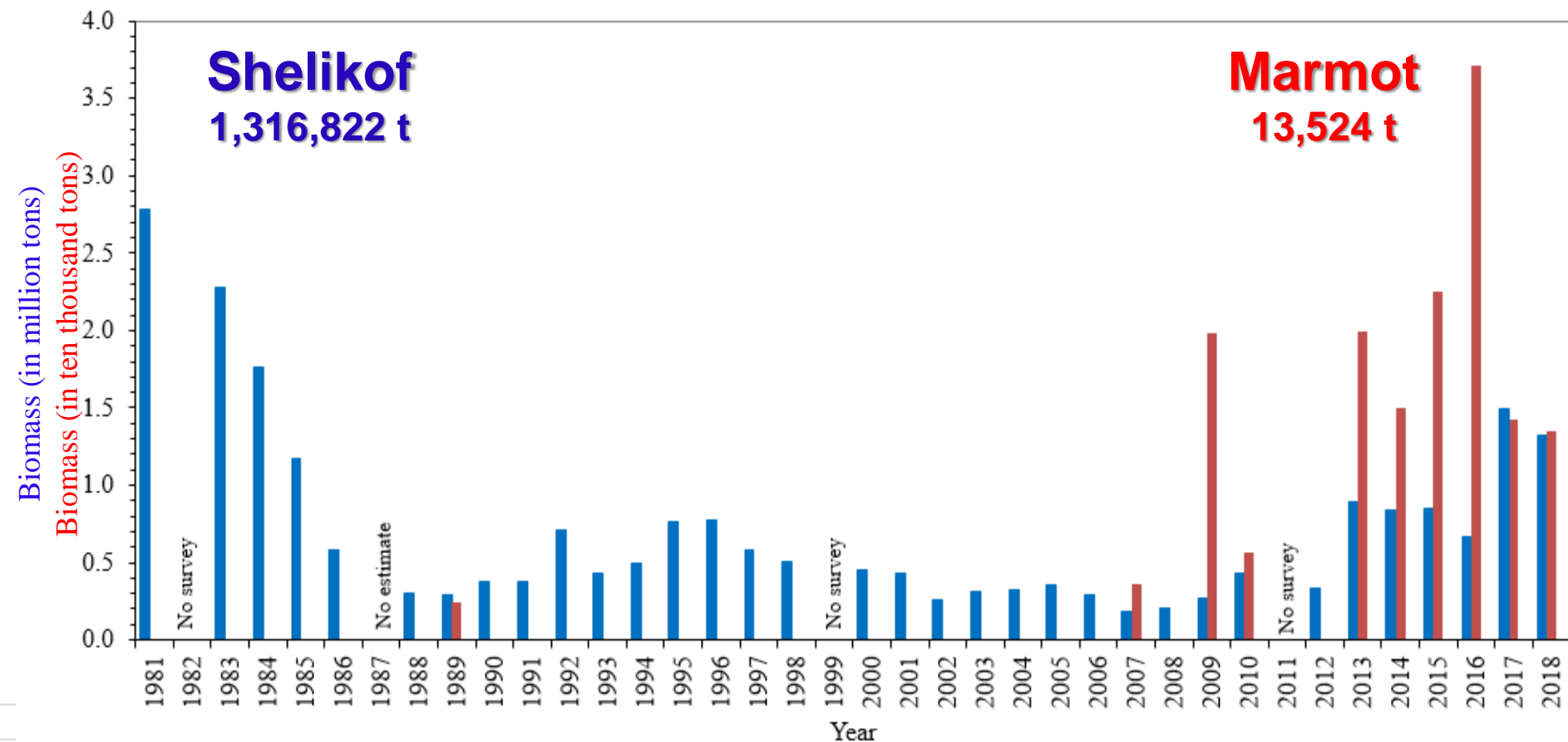
Length Distributions



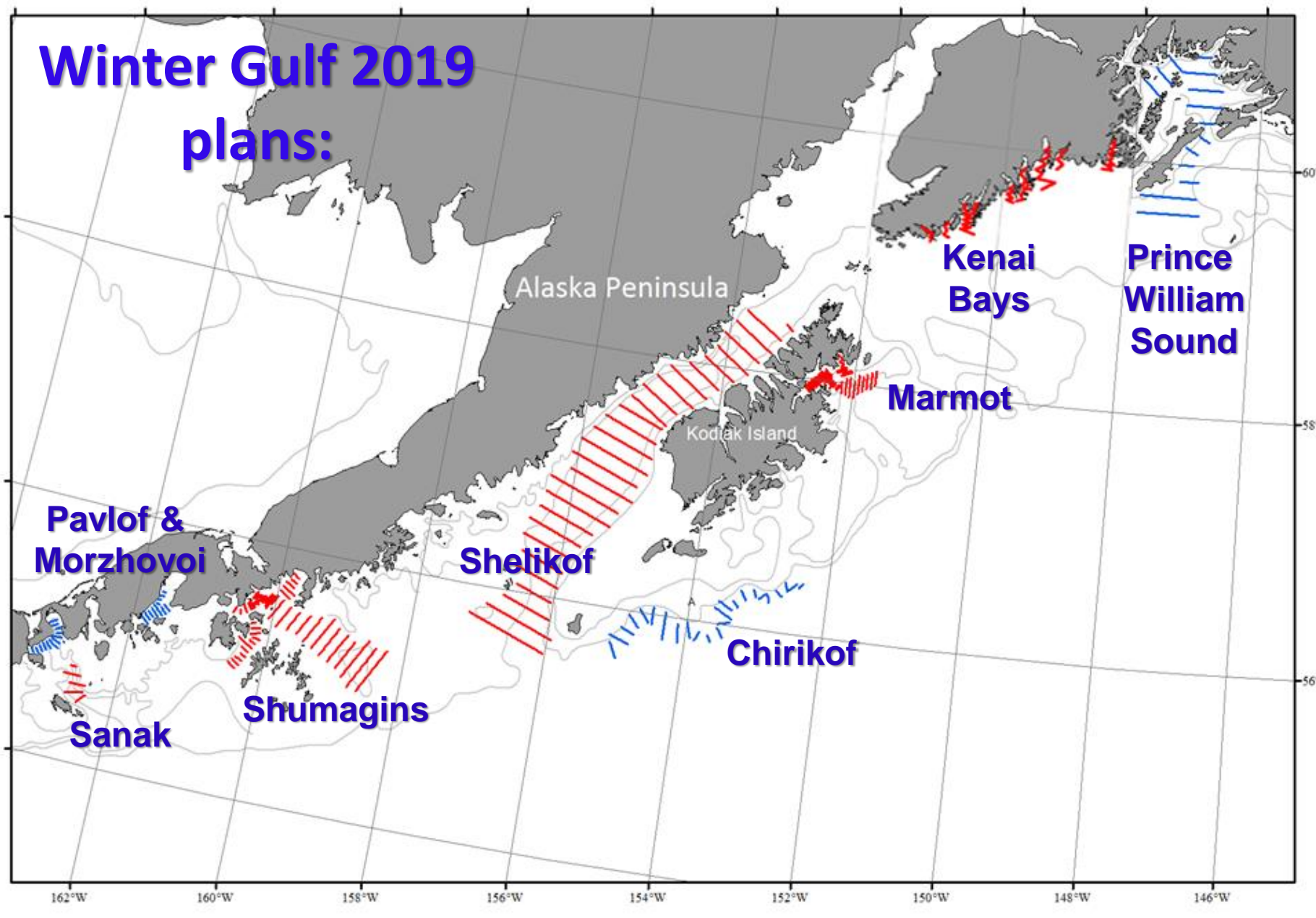
Shumagin Islands Historical Pollock Size Composition



Pollock Biomass Estimates: Time Series



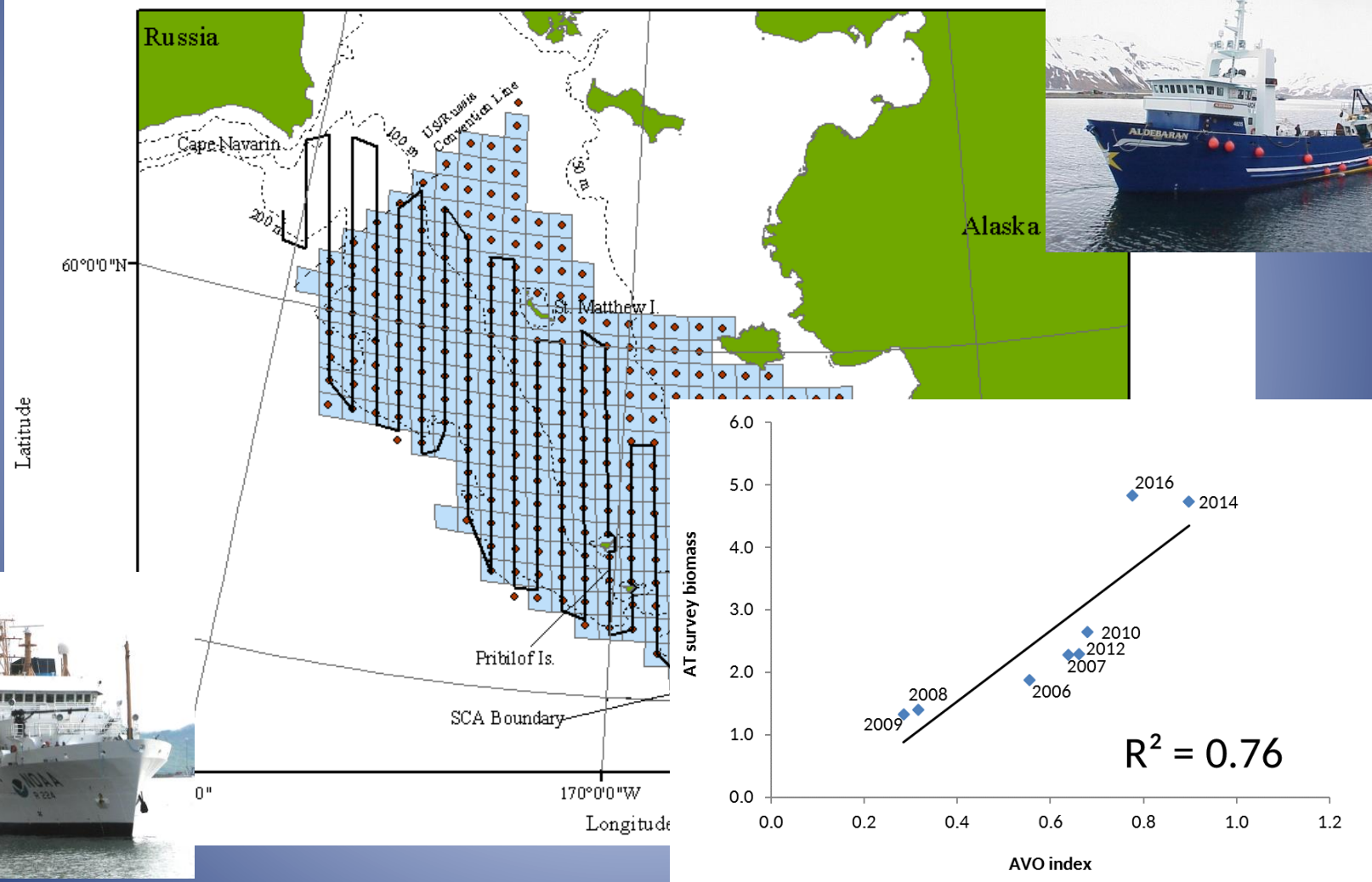
Winter Gulf 2019 plans:



Questions?



AVO (index of midwater pollock from bottom trawl survey acoustics) – 2018 update coming soon!



'AVO index' vs. acoustic-trawl survey pollock biomass