

**ADF&G Informational Handout for
Charter Halibut Committee Meeting
October 26, 2021**

Table 1. Preliminary charter halibut harvest estimates for Areas 2C and 3A for 2021.

Area	Mean wt (lb)	Logbook Harvest (no. fish)	Yield (lb)	Release Mortality (lb)	Total Removals (lb)	Allocation (lb)	Overage (lb)	Overage %
2C	14.48	77,287	1,119,442	34,737	1,154,179	810,000	344,179	42.5%
3A	13.23	184,160	2,436,779	17,622	2,454,401	1,950,000	504,401	25.9%

Table 2. Comparison of projections (Dec 2020 analysis) and preliminary estimates (Oct 2021).

Area	Component	Projection with		
		Projection Dec 2020	COVID Buffer	Preliminary Oct 2021
2C	Harvest (no. fish)	79,087	51,407	77,287
	Average wt (lb)	14.76	14.76	14.48
	Yield (Mlb)	1.168	0.759	1.119
	Release mort (Mlb)	0.041	0.027	0.035
	Total removals (Mlb)	1.209	0.786	1.154
3A	Harvest (no. fish)	172,845	129,634	184,160
	Average wt (lb)	14.09	14.09	13.23
	Yield (Mlb)	2.436	1.827	2.437
	Release mort (Mlb)	0.033	0.025	0.018
	Total removals (Mlb)	2.470	1.852	2.454

Table 3. Comparison of 2020 preliminary (Oct 2020) and final (Oct 2021) estimates.

Area	Component	Preliminary	Final	Final Relative to Preliminary
2C	Harvest (no. fish)	37,415	36,100	-3.5%
	Average wt (lb)	12.75	12.77	0.1%
	Yield (Mlb)	0.477	0.461	-3.4%
	Release mortality (Mlb)	0.022	0.022	-1.5%
	Total removals (Mlb)	0.500	0.483	-3.3%
3A	Harvest (no. fish)	108,379	106,589	-1.7%
	Average wt (lb)	14.60	14.58	-0.2%
	Yield (Mlb)	1.583	1.554	-1.8%
	Release mortality (Mlb)	0.014	0.013	-6.1%
	Total removals (Mlb)	1.597	1.567	-1.9%

Table 4. Performance of charter management measures recommended annually by the North Pacific Fishery Management Council since 2014 (2021 preliminary estimates in bold italics).

Area	Year	Management measure	MgmtType	Allocation ^a	Removals ^a	Overage	% Overage
2C	2014	One fish, U44-O76 rev. slot	CSP	0.761	0.827	0.066	9%
	2015	One fish, U42-O80 rev slot	CSP	0.851	0.814	-0.037	-4%
	2016	One fish, U43-O80 rev slot	CSP	0.906	0.839	-0.067	-7%
	2017	One fish, U44-O80 rev slot	CSP	0.915	0.941	0.026	3%
	2018	One fish, U38-O80 rev slot	CSP	0.810	0.716	-0.094	-12%
	2019	One fish, U38-O80 rev slot	CSP	0.820	0.697	-0.123	-15%
	2020	One fish, U40-O80 rev slot thru 6/14, U45-O80 after 6/14	CSP	0.780	0.483	-0.297	-38%
	2021	One fish, U50-O72 rev slot	CSP	0.810	1.154	0.344	42%
3A	2014	Two fish, one ≤ 29", one trip/day with halibut harvest.	CSP	1.782	2.066	0.284	16%
	2015	Two fish, one ≤ 29", Thursday closed Jun 15-Aug 31, annual limit 5 halibut, one trip/day with halibut harvest.	CSP	1.890	2.094	0.204	11%
	2016	Two fish, one ≤ 28", Wednesday closed all year, annual limit 4 halibut, one trip/day with halibut harvest.	CSP	1.814	2.021	0.207	11%
	2017	Two fish, one ≤ 28", Wednesday closed all year, three Tuesdays closed, annual limit 4 halibut, one trip/day with halibut harvest.	CSP	1.890	2.089	0.199	11%
	2018	Two fish, one ≤ 28", Wednesday closed all year, six Tuesdays closed, annual limit 4 halibut, one trip/day with halibut harvest.	CSP	1.790	1.886	0.096	5%
	2019	Two fish, one ≤ 28", Wednesday closed all year, five Tuesdays closed, annual limit 4 halibut, one trip/day with halibut harvest.	CSP	1.890	2.054	0.164	9%
	2020	Two fish (one ≤ 28" thru 6/14, ≤ 32" after 6/14), Tuesday and Wednesday closed thru 6/14, all days open after 6/14, annual limit 4 halibut thru 6/14, no annual limit after 6/14, one trip/day with halibut harvest.	CSP	1.710	1.567	-0.143	-8%
	2021	Two fish, one ≤ 32", Wednesday closed all year, one trip/day with halibut harvest.	CSP	1.950	2.454	0.504	26%

^a - Allocations and removals include release mortality beginning with the CSP in 2014.

^b - 2021 removal estimates are preliminary

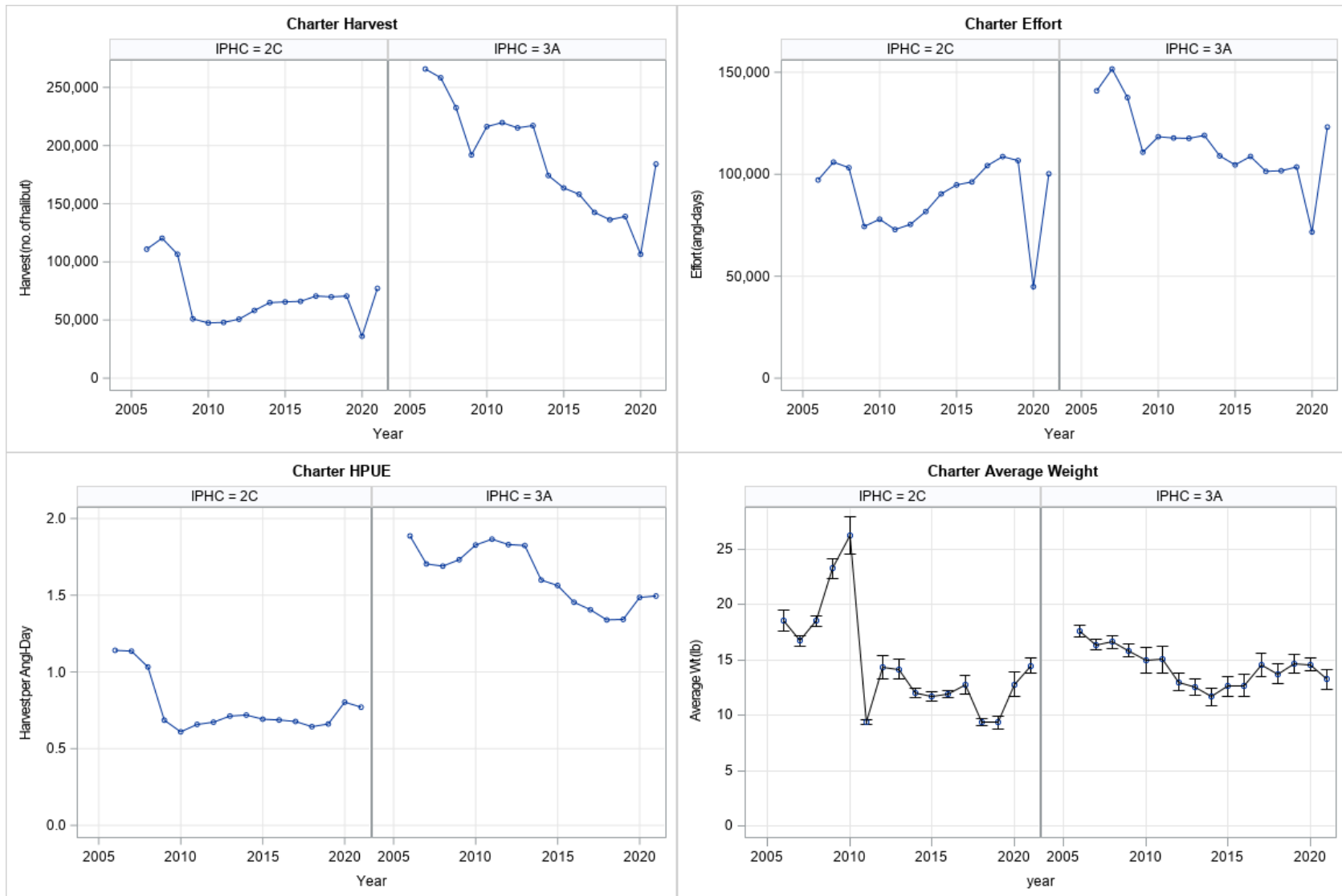


Figure 2. Harvest, effort, harvest-per-unit-effort, and mean weight in IPHC Areas 2C and 3A, 2006-2021. All estimates for 2021 are preliminary.



Figure 3. Harvest, effort, harvest-per-unit-effort, and mean weight by subarea in IPHC Area 2C, 2006-2021. All estimates for 2021 are preliminary.

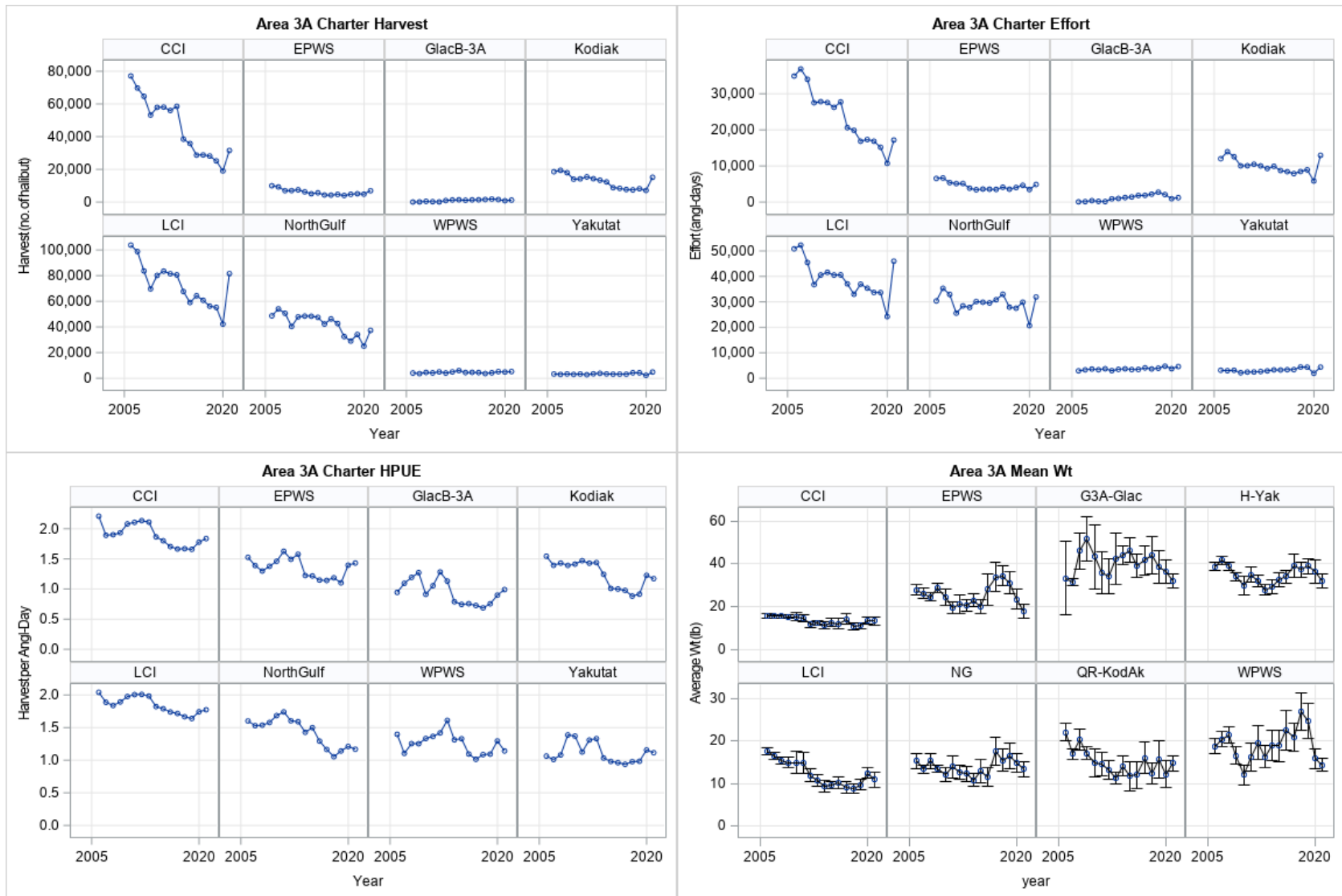
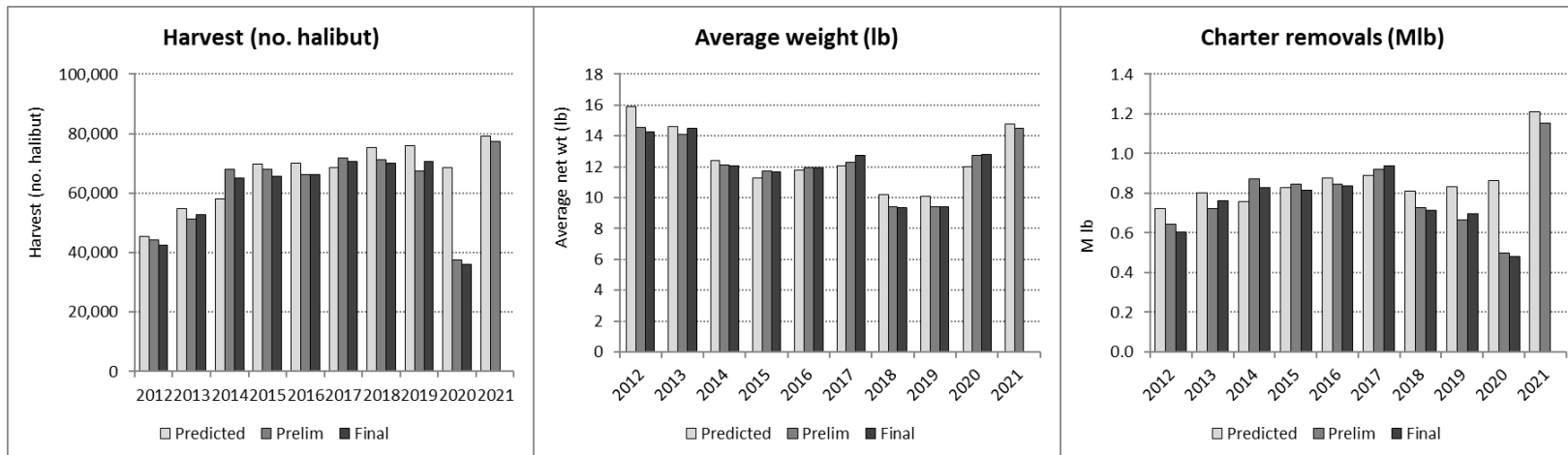


Figure 4. Harvest, effort, harvest-per-unit-effort, and mean weight by subarea in IPHC Area 3A, 2006-2021. All estimates for 2021 are preliminary.

Area 2C



Area 3A

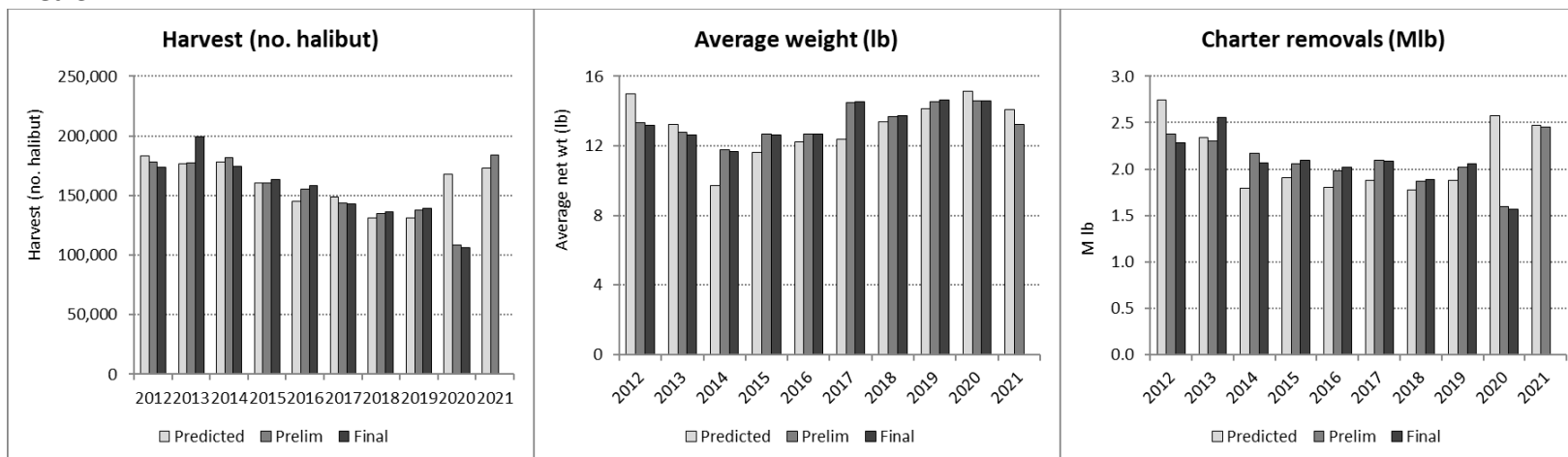


Figure 5. Comparison of predictions (prior to each season), preliminary estimates (based on partial-year logbook data), and final estimates of harvest, average weight, and total charter removals, Areas 2C and 3A, 2012-2021. 2020 predictions are adjusted for mid-season regulation change. 2020 and 2021 projections do not account for anticipated changes in effort due to the COVID-19 pandemic.