

Reclassifying Other Rockfish and Demersal Shelf Rockfish Species Groupings

DRAFT FOR PLAN TEAM REVIEW, September 2022^{1,2}

1	Introduction.....	1
1.1	NPFMC’s Spatial Management Policy.....	3
2	Background: Other Rockfish and Demersal Shelf Rockfish.....	3
2.1	SSC and Plan Team Comments Specific to this Topic.....	3
2.2	Catch of DSR Species GOA-wide.....	5
3	Potential Management, Social, and Economic Impacts.....	8
4	Regulatory considerations and next steps.....	11
5	References.....	11

1 Introduction

In October 2021, the Council supported the SSC’s recommendation to move to Step 2 of the Spatial Management Policy (SMP, see Section 1.1) for consideration of separating Gulf of Alaska (GOA) demersal shelf rockfish (DSR) from the Other Rockfish (OR) complex GOA-wide. The Council stated that an update of the 2017 discussion paper on this topic to identify economic and management implications and tools to achieve conservation and management goals should be developed to inform this process. This paper contains updated data and information from appropriate agencies to assist in informing the Council.

The GOA Other Rockfish (OR) and Demersal Shelf Rockfish (DSR) assessment have seven species which overlap between the two assessments, known as the DSR sub-group: canary, China, copper, quillback, rosethorn, tiger and yelloweye rockfish. These species are assessed within the DSR assessment in NMFS area 650 (a.k.a. East Yakutat/Southeast), but within the OR assessment in all other areas (Figure 1-1). The SSC has expressed concerns regarding the appropriateness of the current management grouping for the DSR species. The authors of both assessments and the GOA Groundfish Plan Team have previously recommended moving the DSR sub-group from the OR assessment (in all areas west of EY/SEO) to the DSR assessment, creating an expanded GOA-wide DSR assessment.

Since 2017,³ the SSC has supported these recommendations for the Council to move forward with Step 2 of the Spatial Management Policy for this complex (see Section 2). In 2017, the SSC recommended using what was then known as Alternative 3a: Using Tier 6 methods for the six non-yelloweye rockfish DSR species GOA-wide. In EY/SEO, the Tier 4 approach currently used for yelloweye rockfish would be maintained, but Tier 6 methods would be used for yelloweye rockfish in all other regions. The complex ABC/OFLs would be the sum of the individual species estimates by region.

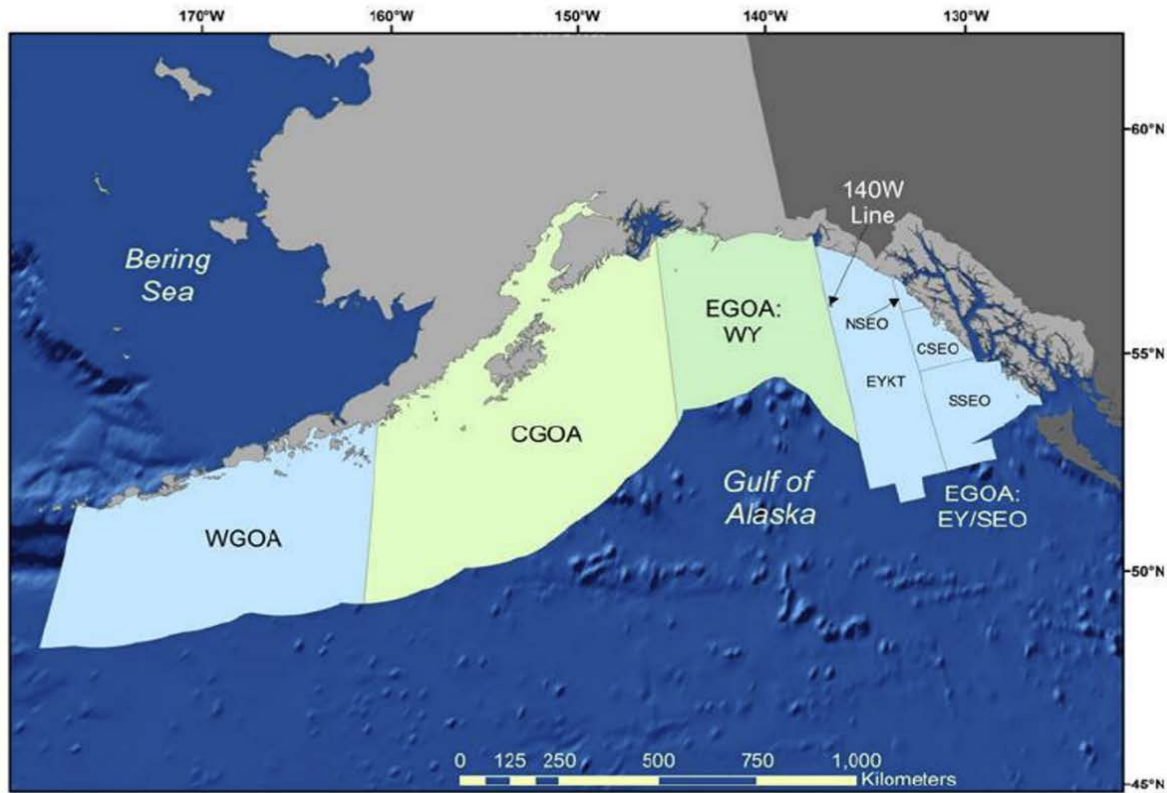
See Section 2 for a summary and timeline of relevant discussion and documents from 2015-2021.

¹ Prepared by: Sara Cleaver (NPFMC), with contributions from Mary Furuness (NMFS), Obren Davis (NMFS), adapted from 2017 SAFE appendix by Cindy A. Tribuzio (AFSC) and Katy B. Echave (AFSC), Ben Williams (AFSC, formerly ADF&G) and Andrew Olson (ADF&G).

² To be finalized after input from the September 2022 Groundfish Plan Team meeting

³ SSC Report, October 2017

Accessibility of this Document: Effort has been made to make this document accessible to individuals with disabilities and compliant with Section 508 of the Rehabilitation Act. The complexity of this document may make access difficult for some. If you encounter information that you cannot access or use, please call NPFMC at [907-271-2809](tel:907-271-2809) so that we may assist you.



WGOA & CGOA	Other Rockfish		Demersal Shelf Rockfish
	EGOA:WY	EGOA:EY/SEO	EGOA:EY/SEO
Blackgill Rockfish	Blackgill Rockfish	Blackgill Rockfish	
Bocaccio	Bocaccio	Bocaccio	
Canary Rockfish	Canary Rockfish		Canary Rockfish
Chilipepper Rockfish	Chilipepper Rockfish	Chilipepper Rockfish	
China Rockfish	China Rockfish		China Rockfish
Copper Rockfish	Copper Rockfish		Copper Rockfish
Darkblotched Rockfish	Darkblotched Rockfish	Darkblotched Rockfish	
Greenstriped Rockfish	Greenstriped Rockfish	Greenstriped Rockfish	
Harlequin Rockfish	Harlequin Rockfish	Harlequin Rockfish	
	Northern Rockfish	Northern Rockfish	
Pygmy Rockfish	Pygmy Rockfish	Pygmy Rockfish	
Quillback Rockfish	Quillback Rockfish		Quillback Rockfish
Redbanded Rockfish	Redbanded Rockfish	Redbanded Rockfish	
Redstripe Rockfish	Redstripe Rockfish	Redstripe Rockfish	
Rosethorn Rockfish	Rosethorn Rockfish		Rosethorn Rockfish
Sharpchin Rockfish	Sharpchin Rockfish	Sharpchin Rockfish	
Silvergray Rockfish	Silvergray Rockfish	Silvergray Rockfish	
Splitnose Rockfish	Splitnose Rockfish	Splitnose Rockfish	
Stripetail Rockfish	Stripetail Rockfish	Stripetail Rockfish	
Tiger Rockfish	Tiger Rockfish		Tiger Rockfish
Vermilion Rockfish	Vermilion Rockfish	Vermilion Rockfish	
Widow Rockfish	Widow Rockfish	Widow Rockfish	
Yelloweye Rockfish	Yelloweye Rockfish		Yelloweye Rockfish
Yellowmouth Rockfish	Yellowmouth Rockfish	Yellowmouth Rockfish	
Yellowtail Rockfish	Yellowtail Rockfish	Yellowtail Rockfish	

Figure 1 Map of the Gulf of Alaska (GOA) management areas: Western (WGOA), Central (CGOA) and Eastern (EGOA) with the species of the Other Rockfish (OR) and Demersal Shelf Rockfish (DSR) included for each area. The EGOA is subdivided into the West Yakutat (WY) and East Yakutat/Southeast Outside (EY/SEO) areas. The EY/SEO is subdivided for the DSR complex into East Yakutat (EYKT), Northern, Central and Southern Southeast Outside (NSEO, CSEO, and SSEO, respectively). The table below the figure lists the species that are part of each complex in each of the areas.

1.1 NPFMC's Spatial Management Policy

In October 2013, the Council adopted a policy that established a process for determining spatial management (i.e., subarea allocations of annual harvest specifications (OFL, ABC, and/or TAC)) of stocks and stock assemblages for groundfish, crabs, and scallops.

1. As soon as preliminary scientific information indicates that further stock structure separation or other spatial management measures may be considered, the stock assessment authors, plan teams (groundfish, crab, scallop), and SSC should advise the Council of their findings and any associated conservation concerns.
2. With input from the agency, the public, and its advisory bodies, the Council (and NMFS) should identify the economic, social, and management implications and potential options for management response to these findings and identify the suite of tools that could be used to achieve conservation and management goals. In the case of crab and scallop management, ADF&G needs to be part of this process.
3. To the extent practicable, further refinement of stock structure or other spatial conservation concerns and potential management responses should be discussed through the process described in recommendations 1 and 2 above.
4. Based on the best information available provided through this process, the SSC should continue to recommend OFLs and ABCs that prevent overfishing of stocks.

2 Background: Other Rockfish and Demersal Shelf Rockfish

Past investigation of management alternatives for DSR GOA – wide included consultations between assessment authors, Alaska Department of Fish and Game Southeast and Southcentral region staff and the Alaska Regional Office. Multiple management alternatives were discussed in 2017, and the authors both the OR and DSR assessments, as well as the GOA Groundfish Plan Team, recommended moving the seven DSR species which occur in the OR complex (i.e., those occurring to the west of EY/SEO) into the DSR assessment and expanding the DSR assessment to be GOA – wide. This option would enable managers to monitor the catch of these species more appropriately. Since then, the authors, Plan Team, and SSC all continue to agree that the proposed changes to the composition of the complexes are an improvement over the current groupings.

The primary question when the 2017 appendix to the SAFE was written was whether a GOA-wide assessment would be more appropriate for these species. To address these concerns, the OR and DSR assessment authors worked together to provide a discussion of catch, the available survey data from both state and federal surveys and estimated ABC and OFLs for potential management alternatives. This section of the document is updated from that presented in the 2017 appendix to include updated catch data and to incorporate comments brought forth by the SSC and Plan Team.

2.1 SSC and Plan Team Comments Specific to this Topic

2015

The [2015 GOA OROX SAFE](#) had two appendices relevant to this discussion and kicked off the idea of changing the species compositions within the GOA OROX and DSR assessments. See Appendix 16A for background and PT/SSC comments which prompted the analyses in Task #1 (stock structure) and Task #3 (alternative management). The stock structure documents for both the GOA OROX and DSR assessments were combined and are included in Appendix 16B.

In short, the Task #3 analysis recommended that all of the DSR sub-group species within the OROX assessment be moved to a GOA-wide DSR complex assessment.

“The Team recommends further evaluation of the author preferred Alternative 3 in coordination with the Council’s process for determining spatial management.” – GOA PT September 2015

“The SSC advises that additional consideration should be given to Alternative 2 as well. For example, if all these species are combined, would this result in grouping species of divergent life history characteristics?” – SSC October 2015

“The SSC suggests that this analysis should not be rushed. The prospects for developing a GOA-wide DSR assessment should consider that the survey information is best developed for Southeast Alaska, and that future funding for those surveys is uncertain. Also, for the various alternatives, assemblage membership should be carefully re-examined to make sure that species in the assemblage share some common characteristics. Alternative combinations of species should be considered. The SSC also encourages involvement of industry members in the process of alternative development so that alternatives are developed mindful of fishery and management complexity.” – SSC October 2015

2017

The [2017 Sept PT](#) document addressed the above comments in a re-examination of Task #3 from above. The recommendation was still the same.

“The Team recommends moving ahead with the author preferred Alternative 3a to split DSR species out of the ORX complex. The Team also requests that the author develop clear justification for how the Tier 6 method was selected before the November meeting.” – GOA PT September 2017

“The SSC concurs with the authors and Plan Team that the groupings and spatial specifications described under Alternative 3a are an improved description of structure and a reasonable approach to spatial management.” - SSC October 2017

“Given the scope of this action and potential impacts to the fishery, the SSC recommends that the Council’s Stock Structure and Spatial Management Policy is followed.” - SSC October 2017

“The SSC recommends that the Plan Team, during its November 2017 meeting: 1) provide guidance on the level of conservation concern for this stock; 2) evaluate whether the proposed breakout is appropriate given the level of concern; and, as appropriate 3) determine whether other measures would adequately address conservation needs. The stock structure template would be an appropriate tool for determining the level of conservation concern.” - SSC October 2017

The November [presentation](#) led discussion to respond to the above comments:

“The Team again supports the conclusions of the author and reiterates our earlier recommendation that the demersal sub-group be moved into the DSR assessment and make the DSR assessment GOA-wide pending Council evaluation of management and economic implications.” – GOA PT November 2017

“The Team concluded that the demersal sub-group of the OR assessment should be categorized as “moderate concern” in the Council’s Stock Structure and Spatial Management Policy scale of concern.” – GOA PT November 2017

“The Team recommends that this issue move to Step 2 of the Council’s Stock Structure and Spatial Management Policy.” – GOA PT November 2017

“The SSC agrees with this assessment of stock structure and urges the Council to consider step 2 of the Stock Structure and Spatial Management Policy.” – SSC December 2017

2019

The OROX [assessment](#) (see Appendix) and [presentation](#) brought forward this discussion point attempting to figure out what to do next.

“The Team continues to recommend the Council move forward with Step 2 of the Spatial Management Policy for this complex and cautions potential changes in catch estimates may occur in 2020 due to full retention regulations and the incorporation of EM data.” – GOA PT November 2019

“The SSC supports the GPT’s recommendation for the Council to move forward with Step 2 of the Spatial Management Policy for this complex.” – SSC December 2019

2020- no assessment for Other Rockfish complex

2021

“The Team recommends, based on the analyses presented, that the DSR complex be split from the ORx complex GOA-wide. The Team requests guidance from the SSC on any further analyses needed to support this proposal.” – GOA PT September 2021

“The SSC concurs with the GOA GPT and recommends that the Council consider taking up this issue of separating DSR from Other Rockfish GOA-wide – thus moving to Step 2 of the Spatial Management Policy.” – SSC October 2021

“The Team continues to support an earlier recommendation that the DSR subgroup be moved into the DSR assessment and make the DSR assessment GOA-wide pending a Council analysis on spatial management implications.” – GOA PT November 2021

“there are several other outstanding issues and recommendations that will likely affect future assessments of the other rockfish stock complex including a Council-directed analysis on spatial management implications of separating DSR from the other rockfish complex gulf-wide, investigations into elevating some of the species (harlequin and yelloweye rockfish) into different tiers, and if there is evidence of range expansion of species from the south.” – SSC December 2021

The next full assessment for OROX is planned in 2023, full assessment for DSR planned for 2022/2024.

2.2 Catch of DSR Species GOA-wide

Catch of the seven DSR species is provided by the NMFS Alaska Regional Office Catch Accounting System for catch in federally managed fisheries and the Pacific Halibut IFQ fishery. Other estimates of catch are provided by the State of Alaska for the directed, subsistence, and recreational fisheries in EY/SEO, as well as estimated bycatch from the Pacific Halibut fishery, prior to the 2013 observer restructuring. Considering the seven DSR species in a GOA-wide context, total annual catches do not exceed 500 t and yelloweye rockfish is the predominant species (Table 1). In the EY/SEO areas, full retention of all seven DSR species has been required since 2005, thus recorded catches prior to 2005 may not be representative of total catch.

While most of the catch has historically occurred in the EY/SEO area, the proportion of the total catch originating in the CGOA has been increasing (Figure 2). The increase in the CGOA has not been previously investigated as the catch of DSR species within the larger OR complex is comparatively small (Table 1 and Table 2). Much of the catch occurs on hook and line vessels, primarily targeting Pacific cod and Pacific halibut. The increased catch is predominantly from quillback rockfish retention, suggesting a potential market demand. The GOA is believed to be at the northern edge of the ranges for the DSR species; therefore, the majority of the biomass is in the EY/SEO region. While the distribution of the catch appears to be expanding towards the west, the total catch of these seven DSR species is not increasing. Yelloweye rockfish comprises the majority of the catch composition of DSR species (Table 1 and Figure 2) in all regions.

The bycatch only fishery for the DSR species in Prince William Sound and the Cook Inlet is managed by the State of Alaska and is not subject to the GOA FMP. There is a directed rockfish fishery for Pelagic Shelf Rockfish (PSR: dark, dusky, widow, yellowtail, black and blue rockfish) in Cook Inlet; harvest for directed and bycatch both accrue towards the guideline harvest level (GHL). Cook Inlet and PWS have GHLs which apply to all rockfish species; the GHL is based on mean historical catch and is 68 t for each area. The average DSR catch from 2019 – 2021 in Prince William Sound was 16 tons, 33% of the total rockfish caught. This harvest was composed primarily of yelloweye rockfish with quillback rockfish being the second most common species caught. From 2019 – 2021, the DSR catch in the Cook Inlet area comprised 50% of the total, 13 tons, caught as bycatch to other groundfish fisheries. Forty-seven percent of the rockfish harvest in Cook Inlet from 2019 – 2021 was in the PSR directed fishery.

Table 1 Catch (mt) of the seven DSR species across the full GOA, broken out by Yelloweye Rockfish (YE) and the remaining DSR species combined (quillback, copper, rosethorn, tiger, China, and canary). Data is provided by the Alaska Regional Office for the Western Gulf of Alaska (WGOA), Central GOA (CGOA) and West Yakutat (WY) regions. Data for the East Yakutat/Southeast Outside (EY/SEO) Region is provided by AKFIN/Alaska Department of Fish and Game and includes commercial fishery harvest only and does not include harvest estimates from the recreational and subsistence fisheries and estimates of commercial fishery discards. There are multiple caveats in this time series of data to make note of: 1) the restructured observer program went into effect for federal fisheries in 2013; and 2) beginning in 2005, full retention of DSR species was required in EY/SEO.

	WGOA		CGOA		WY		EY/SEO		TOTALS	
	YE	Others	YE	Others	YE	Others	YE	Others	YE	Others
2003	39	<1	84	3	26	2	262	30	412	35
2004	35	<1	73	<1	20	<1	318	33	446	34
2005	18	<1	59	<1	12	<1	233	21	322	22
2006	46	<1	71	2	29	1	202	19	348	23
2007	21	<1	83	1	28	1	195	21	327	24
2008	46	<1	130	3	25	<1	191	19	392	22
2009	41	<1	99	2	27	<1	212	15	379	18
2010	44	<1	130	5	40	1	162	21	376	29
2011	59	<1	135	6	33	1	112	15	340	23
2012	43	<1	110	10	16	<1	178	18	347	30
2013	49	1	109	14	34	<1	209	18	401	34
2014	41	<1	95	9	17	<1	99	13	253	23
2015	46	1	109	29	18	1	104	12	276	44
2016	27	<1	117	27	11	1	112	14	267	43
2017	88	<1	98	15	9	2	126	16	321	34
2018	23	<1	75	13	36	10	130	19	264	43
2019	42	<1	71	9	21	3	138	20	272	33
2020	23	<1	65	2	20	2	100	20	209	25
2021	25	<1	124	14	23	3	101	22	273	40

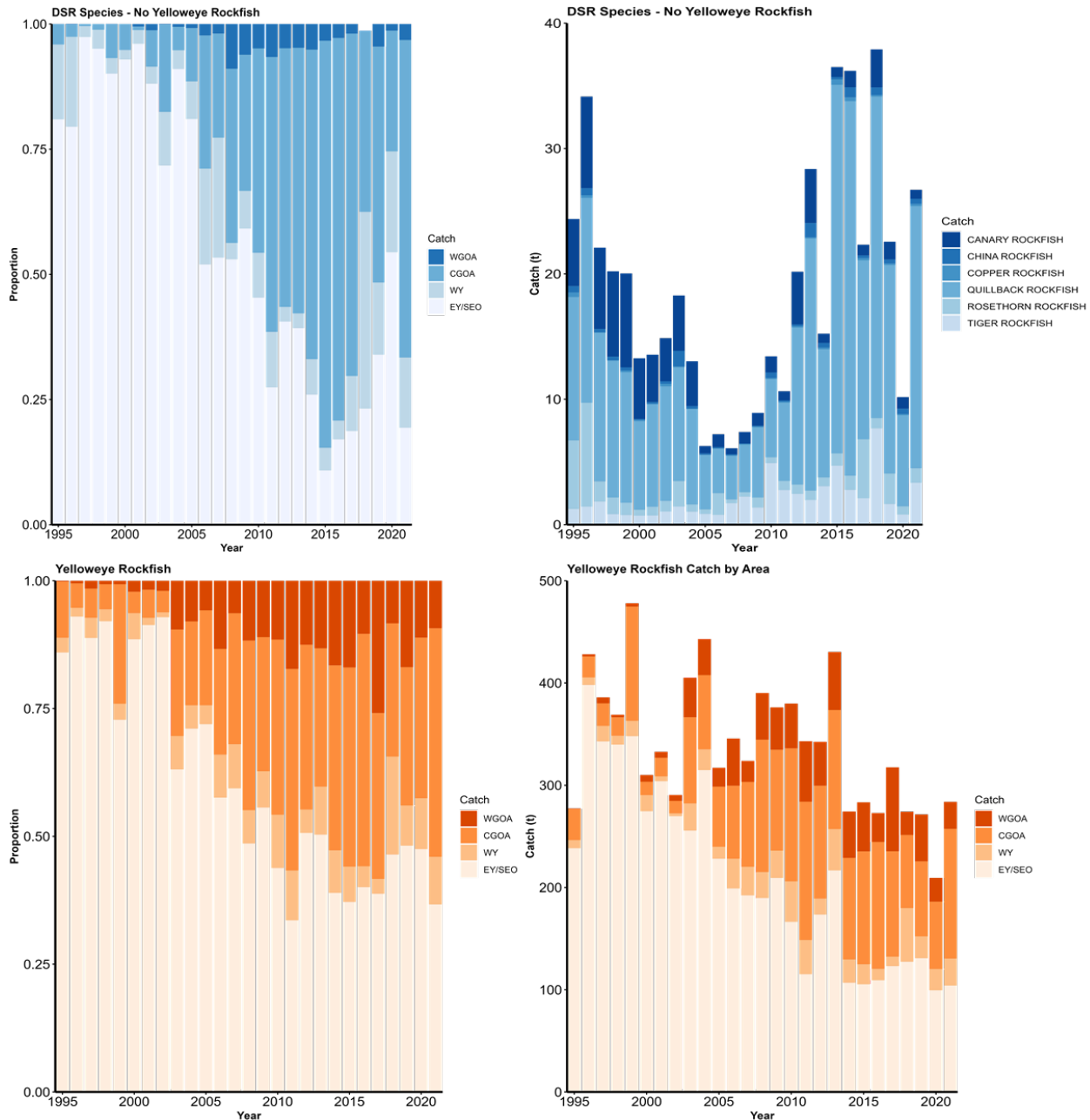


Figure 2 Catch distribution by management area for: A) all of the DSR species except yelloweye rockfish, and B) just yelloweye rockfish. C) Catch by species for all of the DSR species except yelloweye rockfish, and D) catch by area for just the yelloweye rockfish. Catch estimates in EY/SEO include estimated catch from State managed directed fisheries, subsistence and sport fisheries. The time series of catch in EY/SEO has the following caveats: retention was not required until 2005, sport fishery estimates are available 2006 – 2016, subsistence estimates available from 2010 - 2015. Further, the restructured observer program went into effect in 2013.

Table 2 Catch (excluding research catches) in mt, acceptable biological catch (ABC) and total allowable catch (TAC) of the Other Rockfish (OR) and Demersal Shelf Rockfish (DSR) complexes. Data from NMFS Catch Accounting System (CAS) and ADFG/CFEC Fish Tickets, data compiled by AKFIN in Comprehensive FT.

Year	Other Rockfish							Demersal shelf rockfish		
	WGOA	CGOA	WY	EY/SE	Total	ABC	TAC	EY/SE	ABC	TAC
2003	133	683	227	26	1069	5050	990	292	390	390
2004	275	584	78	31	967	3900	670	351	450	450
2005	65	516	71	48	700	3900	670	253	410	410
2006	279	604	138	79	1100	4152	1480	221	410	410
2007	249	340	54	53	697	4154	1482	217	410	410
2008	250	439	50	29	770	4297	1730	210	382	382
2009	403	403	83	15	904	4297	1730	227	362	362
2010	366	441	131	31	970	3749	1192	184	295	295
2011	303	398	195	33	928	3749	1192	128	300	300
2012	255	723	38	25	1041	4045	1080	196	293	293
2013	192	465	68	50	775	4045	1080	228	303	303
2014	166	714	55	35	971	4080	1811	111	274	274
2015	206	839	32	15	1092	4080	1811	116	225	225
2016	155	1018	51	31	1255	5773	2308	127	231	231
2017	141	856	45	36	1078	5773	2308	143	227	227
2018	49	990	112	44	1194	5594	2305	150	250	250
2019	106	577	181	78	942	5594	5594	157	261	261
2020	99	564	109	110	882	4053	4053	120	238	238
2021	134	914	118	36	1201	4053	4053	123	257	257

3 Potential Management, Social, and Economic Impacts

Moving the DSR sub-group from the OR assessment (in all areas west of EY/SEO) to the DSR assessment, and creating an expanded GOA-wide DSR assessment, would afford the DSR species a higher level of management oversight in the WGOA and CGOA and would be relatively simple to implement from a stock assessment perspective. Relevant considerations for this change are: potential ABC/OFL overages, stock assessments, jurisdictions, in-season management and potential for conservation concerns.

Potential ABC/OFL overages

Members of the DSR-subgroup are primarily caught on longlines in the IFQ fishery, while the other 20 species in the OR complex are generally caught in trawl gear. Exceeding the ABC or nearing the OFL could limit other fisheries as the Federally managed fisheries could be prohibited. In 2017, the authors used an estimation for ABC based on the 2016 assessments. At that time, the authors examined the most recent 15 years of catch and estimated that the OR ABC for EY/SEO would have been exceeded in four years, the WY estimated ABC would have been exceeded in eight years, the WGOA in 10 out of 15 years, and the CGOA in five of the years. However, the GOA-wide proposed OFL would not have been exceeded.

When conducting the same exercise using 2020 ABC estimates, the ABC for the W/CGOA would have been exceeded in 6 out of 15 years, and the ABC would not have been exceeded in other areas in any years. For DSR, the ABC would have been exceeded W/CGOA, the ABC would have been exceeded in 8 of the last 15 years in the W/CGOA and 4 of the last 15 years in WY. The GOA-wide proposed OFLs would not have been exceeded for OR nor DSR.

Table 3 Potential ABC estimates (t) for 2020 (from the 2019 assessments) separated by OR or DSR. Beginning in the 2014 fishery, the ABCs for the Western and Central GOA OR were combined, which is continued here for the 2017 fishery.

GOA-wide					
	W/CGOA	WY	EY/SEO	ABC	OFL
OR	768	335	2744	3847	5045
DSR	172	34	238	444	650

To reduce the potential of overages due to small ABCs and the non-target nature of the catch of these species, particularly outside of EY/SEO, in 2017 the authors recommended the following ABC groupings for a GOA-wide DSR complex, based on Alternative 3a (all species Tier 6 (max catch) with the exception of EY/SEO yelloweye rockfish as Tier 4):

Table 4 Potential ABC groupings for GOA DSR based on the 2020 ABC estimates

	W/CGOA+WEST YAKUTAT	EY/SEO	Total
Area ABC(t)	206	238	444
OFL (t)			650

The authors recommend combining the WY ABC with that of the WGOA and CGOA areas because the fishery characteristics differ between EY/SEO and the rest of the GOA. In EY/SEO there are state-managed directed fisheries, and non-directed fisheries included in the assessment. The catch in the EY/SEO has been much less than the ABC for the last 5 years. In all other areas catch of the DSR species is incidental. With the above recommended ABCs, the WGOA/CGOA/WY ABC would have been exceeded in four of the last 15 years. For these species in the GOA, TAC is usually set equal to ABC. If a TAC were to be exceeded, it would place these species on non-retention status (i.e. prohibited species catch or PSC), but would not prevent fisheries from continuing.

One implication of moving the DSR sub-group from the OR assessment (in all areas west of EY/SEO) to the DSR assessment and creating an expanded GOA-wide DSR assessment is that some species could go on PSC status earlier in the season due to smaller ABCs and therefore smaller TACs. Operators of catcher vessels that are required to have a Federal fisheries permit using hook-and-line, pot, or jig gear, must retain and land all rockfish that is caught while fishing for groundfish or IFQ halibut in the GOA. If a rockfish species is closed to directed fishing only a proportion of landed rockfish may enter commerce and be sold, bartered, or traded (the maximum commerce amount or MCA). When a rockfish species is placed on PSC status, the MCA is set to 0 percent and no amount of that rockfish species may enter commerce through sale, barter, or trade except as fish meal. See [information bulletin and regulations](#).

Rockfish incidental catch can be quite variable. However, it is possible that even under the current scenario, these TACs could be reached earlier and retention of certain species could become prohibited. Table 5 shows recent years when OR went on PSC status and associated TACs. From 2010-2022, OR has gone on PSC status in at least one GOA subarea in 8 years, however timing of reaching that status has varied from early July to late September.

Table 5 Years and associated TACs when Other Rockfish went on PSC status. From NMFS Alaska Region.

	Subarea	Date on PSC status	TAC
2010	Western	7/16/2010	212
2011	Western	7/28/2011	212
2012	Central	8/16/2012	606
2012	Western	7/2/2012	44
2013	Western	7/9/2013	44

2014			
2015	Western and Central	9/30/2015	1,031
2016			
2017			
2018			
2019			
2020			
2021	Western and Central	8/20/2021	940
2022	Western and Central	8/6/2022	940

Stock assessment and jurisdictional considerations

This option would be easily implemented in the existing stock assessments. The current DSR assessment is conducted by the ADF&G and includes state-managed fisheries. This assessment structure would be retained and incorporate the DSR species to the west of EY/SEO. Being Tier 6, it would be relatively simple to add these species to the existing assessment. The NMFS would lead the portion of the DSR assessment that relates to the WGOA and the CGOA while ADF&G would lead the portion of the assessment relating to EGOA. This would not change the current jurisdictional structure. The State of Alaska would maintain the management of the DSR fisheries in the EY/SEO and the NMFS would manage the DSR catch in the federal fisheries west of EY/SEO.

Inseason management

The primary challenge associated with moving the DSR sub-group from the OR assessment (in all areas west of EY/SEO) to the DSR is in-season management. The DSR species are currently part of the larger OR complex in all areas west of EY/SEO. The vast majority of the catch of the OR complex comes from the rockfish trawl fishery, while DSR species are rarely caught in the rockfish trawl fishery, but rather in the Pacific halibut fishery. Thus, breaking the DSR species out from the OR complex in the WGOA and CGOA (and WY) would improve tracking of DSR species because they would not be obfuscated by the more predominant OR species. However, the breakout would result in smaller and potentially difficult to manage ABCs, even if the WGOA, CGOA and WY were combined. If a DSR or OR OFL were approached, NMFS may prohibit directed fishing for federally managed fisheries, including those for groundfish and Pacific halibut IFQ.⁴ If the DSR or OR TAC is exceeded, the Pacific halibut fishery would be put on discard status for the DSR fishery, as occurs with the existing management protocol.

Conservation concerns

Creating a GOA-wide DSR assessment, and thus separating the DSR species from the OR assessment is appropriate based on the biology of all 25 OR and DSR species (Omori, Tribuzio, Babcock, & Hoenig, 2021). The biological characteristics of the DSR species are dissimilar from the other OR species; DSR species tend to be nearshore, slower growing with greater longevity, and thus likely have lower productivity. Whereas the remaining OR species tend to be pelagic, offshore, faster growing, shorter-lived, and may have higher dispersal. At this time, available data do not suggest a conservation concern in the DSR species to the west of the EY/SEO area. The IPHC survey, the only survey that consistently catches these species west of EY/SEO exhibits stable catches of the two most commonly caught DSR species: quillback and yelloweye rockfish. In comparison, the EY/SEO ROV survey suggests declines in the density estimates of yelloweye rockfish. Retaining the status quo assessment structures prevents appropriate monitoring for the DSR species. Yelloweye rockfish has been estimated to be one of the species most vulnerable to overfishing in the GOA

⁴ § 679.25

(Ormseth and Spencer, 2011) and thus likely should be monitored more closely instead of grouped into such a large and unrelated complex.

4 Regulatory considerations and next steps

From a regulatory standpoint, implementing this change does not require changes to the FMP.⁵ The proposed changes would reorganize both the OR and DSR complex structures, requiring a regulatory change. This regulatory change consists of changing footnote 4 on Table 10 CFR Part 679, defining basis species for retention. NMFS would recommend, should the Council choose to move forward with this regulatory change, rulemaking occur separate from the GOA harvest specifications process to avoid any delay in publishing harvest specifications.

5 References

Tribuzio, C.A, Echave, K.B., Williams, B., and Olson, A. 2017. Reclassifying Other Rockfish and Demersal Shelf Rockfish Species Groupings. Available at: https://meetings.npfmc.org/CommentReview/DownloadFile?p=4bc746ea-0886-4916-99bd-bb09851af40c.pdf&fileName=GOA_OROX_DSR_Tribuzio_2017-09-01.pdf

Tribuzio, C. A. and K. B. Echave. 2019. Assessment of the other rockfish stock complex in the Gulf of Alaska. *In* 2019 Stock Assessment and Fishery Evaluation Report for 2020. North Pacific Fishery Management Council, Anchorage, AK. Available at: <https://apps-afsc.fisheries.noaa.gov/refm/docs/2019/GOAorock.pdf>

Omori, K. L., C. A. Tribuzio, E. A. Babcock, and J. M. Hoenig. 2021. Methods for identifying species complexes using a novel suite of multivariate approaches and multiple data sources: a case study with Gulf of Alaska rockfish. *Front. Mar. Sci.* 8: 663375.

Ormseth, O.A., P.D. Spencer. 2011. An assessment of vulnerability in Alaska groundfish. *Fisheries Research.* 112:127-133.

⁵ In the GOA Groundfish FMP, Section 3.2.3.1.1: *Identification of Stocks and Stock Complexes for Which Specifications are Made*. Notwithstanding designated stocks or stock complexes listed by category in Table 3-1, the Council may recommend splitting or combining stocks or stock complexes in the “target species” category for purposes of establishing a new harvest specification unit if such action is desirable based on commercial importance of a stock or stock complex or if sufficient biological information is available to manage a stock or stock complex on its own merits.