

NOAA's Integrated Ecosystem Assessment Program



NOAA  
FISHERIES

# Spring PEEC

Preview of Ecosystem  
and Economic Conditions

FALL 2017: GOA Pcod



*“Sets of ecosystem data that indicate there may be problems not accounted for in the assessment models need to be brought to the attention of the SSC and the Plan Teams as early in the process of setting specifications as possible....this information should be presented at the October Council meeting.”*

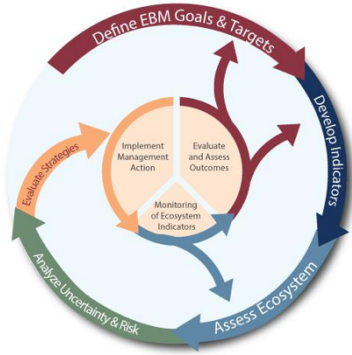
*SSC minutes, Oct 2017*

FALL 2018: Lack of sea ice in the NBS



*“Kudos to the authors and other collaborators on an August workshop and efforts to provide early information on anomalous conditions in the NBS in 2018. This information is extremely valuable and the assessment did a good job of articulating which events were “unprecedented” versus which ones were just unusual.”*

*SSC minutes, Dec 2018*



NOAA's Integrated Ecosystem  
Assessment Program

## Spring PEEC Preview of Ecosystem and Economic Conditions

June 6 & 7, 2019

Goal: Exchange information on early physical, biological, and economic conditions to inform the fall stock assessment cycle.



# GUIDELINES TO PRESENTERS

---

Lightning Talks: 5 minute talks + 3 minutes for discussion.

Provide a brief overview of 2018/2019 winter and spring ecosystem conditions (survey or model updates).

Focus on new developments, updates, and 'hot' topics - what stands out, not comprehensive reviews.

Terms of Reference:

No use or reproduction of data  
without explicit permission of the contributor.

## Meeting objectives:

1. To review hot topics from the fall 2018 assessment cycle
  - a. *What do we know now that we didn't know then?*
  - b. *Are we collecting the right data to address these topics?*
  
2. To identify any areas of concern or unusual conditions that may be relevant to ecosystem and stock assessments
  - a. *Are we collecting the right data to track these topics over the summer?*
  - b. *If these red flags persist, should the Council be notified in October?*

## End goal:

Inform upcoming surveys and the Council as part of AFSC's EBFM mission

## Day 1

### North Pacific Climate Overview

Nick Bond

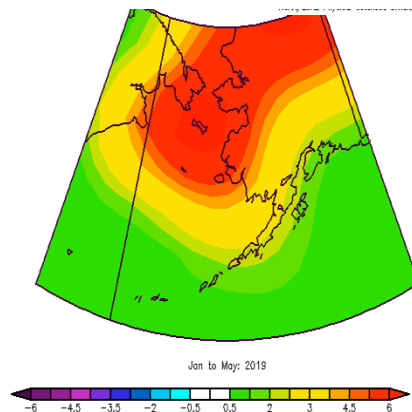
### Physics and Lower Trophic conditions

Jim Overland, Steve Barbeaux,  
Buck Stockhausen, Phyllis Stabeno,  
Kelly Kearney, Al Hermann, Wei Cheng,  
Jeanette Gann, Lisa Eisner, Kathi Lefebvre,  
David Kimmel, Alison Deary

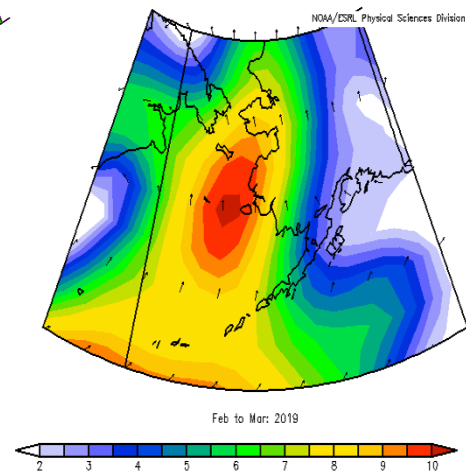
### Upper Trophic conditions

Kerim Aydin, Kirstin Holsman, Ben Laurel,  
Jim Thorson, Chris Wilson, Wayne Palsson

### Jan-May SST



### Feb-Mar SLP



Images provided by J. Overland

## Day 2

### Upper Trophic conditions (cont'd)

Jamal Moss, Ellen Yasumiishi, Jim Murphy,  
Rob Suryan, Hillary Burgess

### Mammals

Jeremy Sterling, Carey Kuhn,  
Peter Boveng, Catherine Berchok,  
John Moran

### SocioEconomic conditions

Ben Fissel, Jim Ianelli, Steve Barbeaux,  
Martin Dorn, Sarah Wise, Gay Sheffield

Afternoon: breakouts by LME



**Ribbon  
Seal**



**Spotted  
Seal**



**Ringed  
Seal**

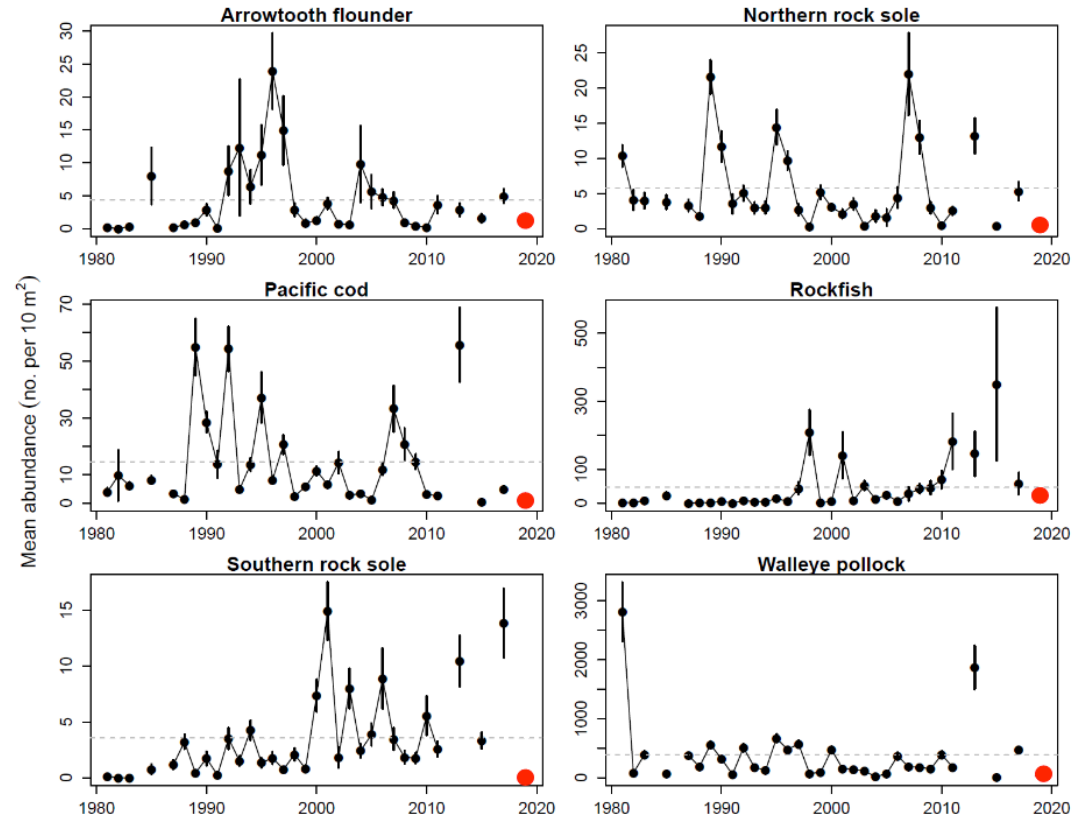


**Bearded  
Seal**



# Gulf of Alaska potential red flags

- ▶ The Gulf of Alaska has been experiencing another marine heatwave since September 2018 (and has continued through summer 2019).
- ▶ Low abundance of 2019 year classes (FOCI larval survey in WGOA), but 2018 pollock year class is “strong” (MACE Shelikof Strait survey).



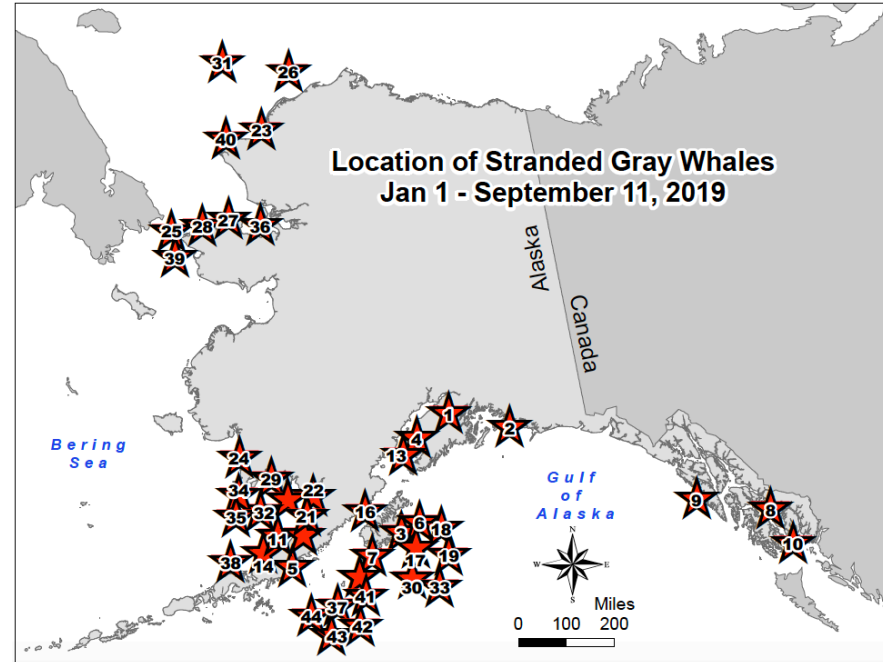
# Bering Sea potential red flags

- ▶ Second winter of little to no sea ice in the northern Bering Sea.



Double whammy!

- ▶ Gray whale UME potentially related to changes in the NBS food web.



Map provided by K. Savage

## October

- Presentations to the SSC, AP, and Council.

## PEEC 2020

- Tentatively planned for late May/early June.
- Need to book a larger conference room!

*Thank you to the  
PEEC 2019 participants!!*

