

**NOAA  
FISHERIES**

Alaska Fisheries  
Science Center

# Joint Groundfish Plan Team meeting report

Jim Ianelli and Chris Lunsford (GOA co-chairs)

Sara Cleaver (GOA coordinator)

Steve Barbeaux and Kalei Shotwell (BSAI co-chairs)

Diana Stram (BSAI coordinator)

November 2022

# Joint Meeting of the Groundfish Plan Teams for the Gulf of Alaska (GOA) and Bering Sea Aleutian Islands (BSAI) MINUTES

November 14-18, 2022  
Hybrid Meeting: Seattle, Washington, AFSC

## **BSAI Groundfish Plan Team Members:**

Steve Barbeaux	AFSC REFM (co-chair)	Kirstin Holsman	AFSC REFM
Kalei Shotwell	AFSC REFM (co-chair)	Phil Joy	ADF&G
Cindy Tribuzio	AFSC ABL (vice chair)	Andy Kingham	AFSC FMA
Diana Stram	NPFMC (coordinator)	Beth Matta	AFSC REFM
Caitlin Allen Akselrud	AFSC RACE	Andrew Seitz	UAF
Mary Furuness	NMFS AKRO	Michael Smith	AFSC REFM
Allan Hicks	IPHC	Jane Sullivan	AFSC ABL
Lisa Hillier	WDFW		

## **GOA Groundfish Plan Team Members:**

Jim Ianelli	AFSC REFM (co-chair)	Nat Nichols	ADF&G
Chris Lunsford	AFSC ABL (co-chair)	Cecilia O'Leary	AFSC GAP
Sara Cleaver	NPFMC (coordinator)	Andrew Olson	ADF&G
Kristan Blackhart	NMFS OS&T	Jan Rumble	ADF&G
Obren Davis	NMFS AKRO	Paul Spencer	AFSC REFM
Craig Faunce	AFSC FMA	Marysia Szymkowiak	AFSC REFM
Lisa Hillier	WDFW	Ben Williams	AFSC ABL
Pete Hulson	AFSC ABL	Kresimir Williams	AFSC RACE
Sandra Lowe	AFSC REFM		

# Joint Plan Team Meeting overview and agenda

## Overview

- Date: November 14<sup>th</sup>
- Place: Seattle and online

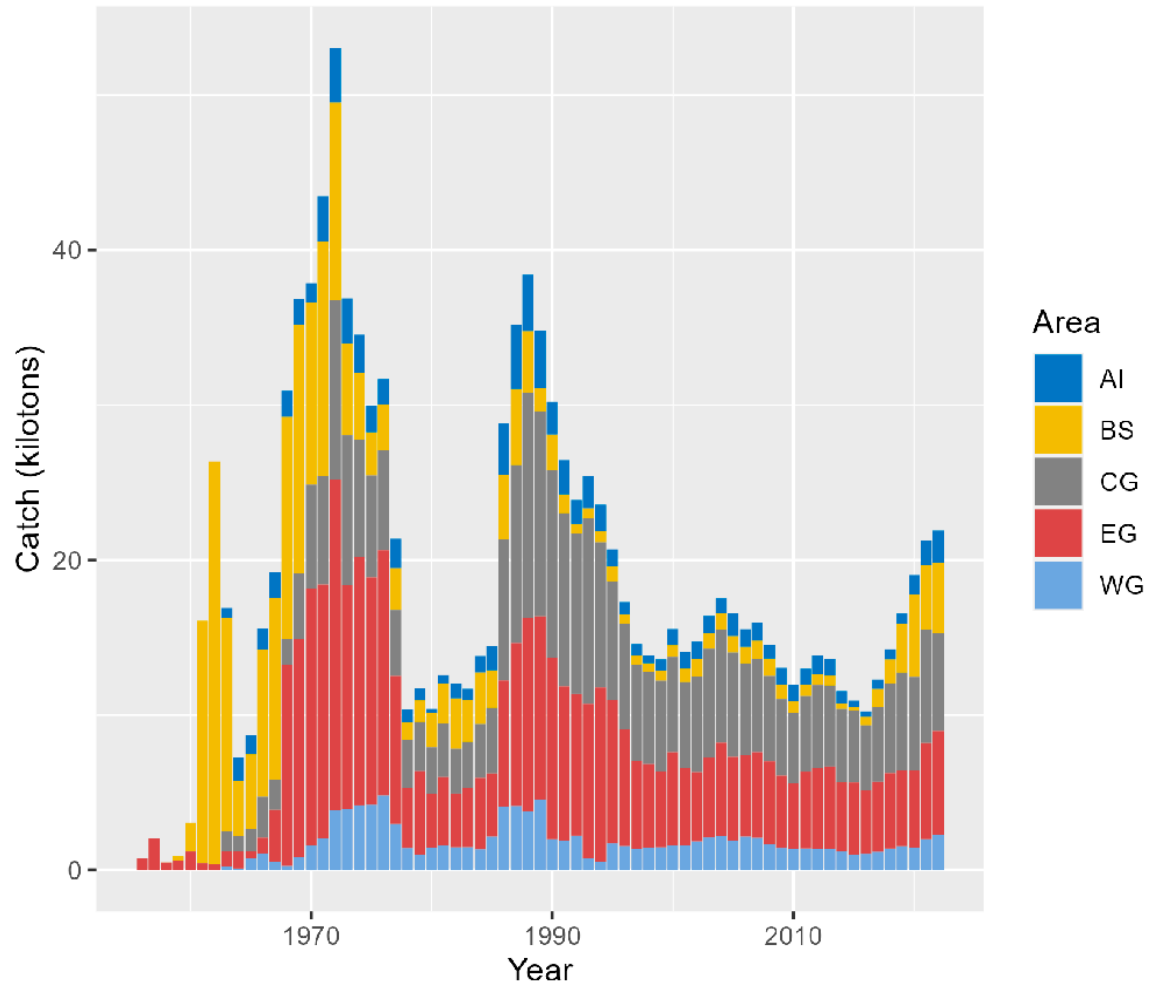
## Agenda

- Sablefish
- Working group
- Economic update

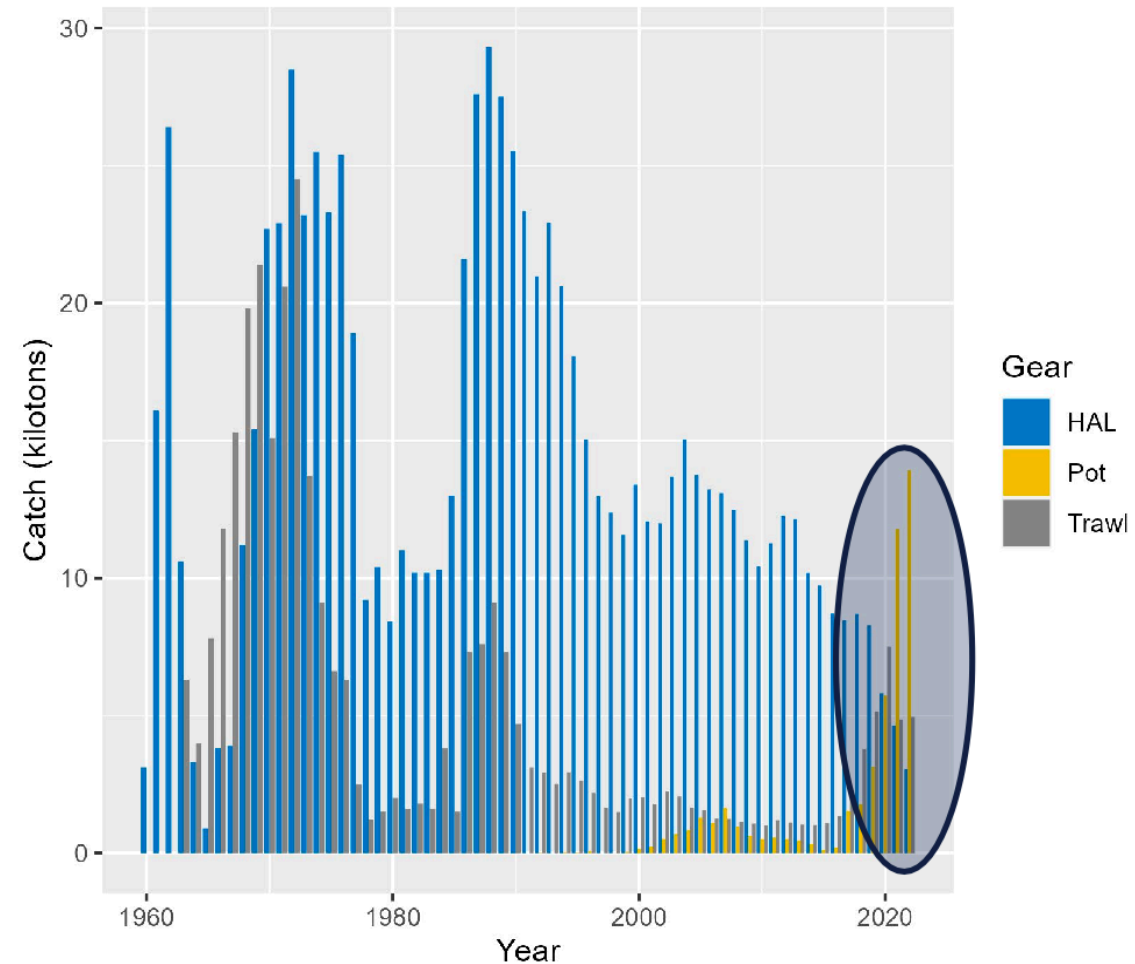
# Sablefish assessment

- Catch in pot gear increasing rapidly

Catch by NPFMC Area

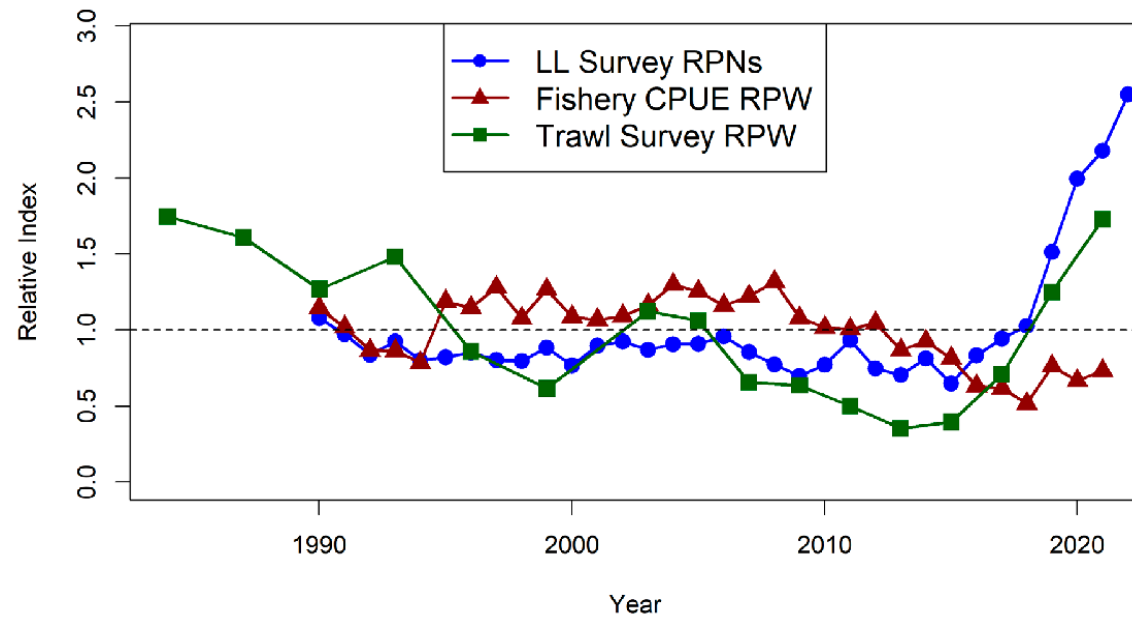


Catch by Gear Type



# Sablefish assessment

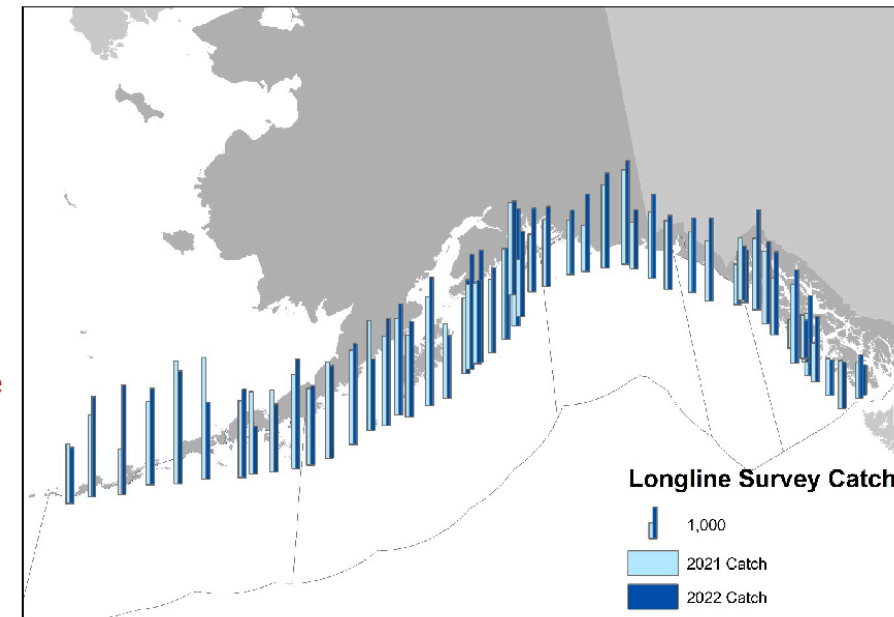
- Longline survey abundance continues increase
- BSAI constitutes > 50% of survey biomass in 2022



**17% Increase**

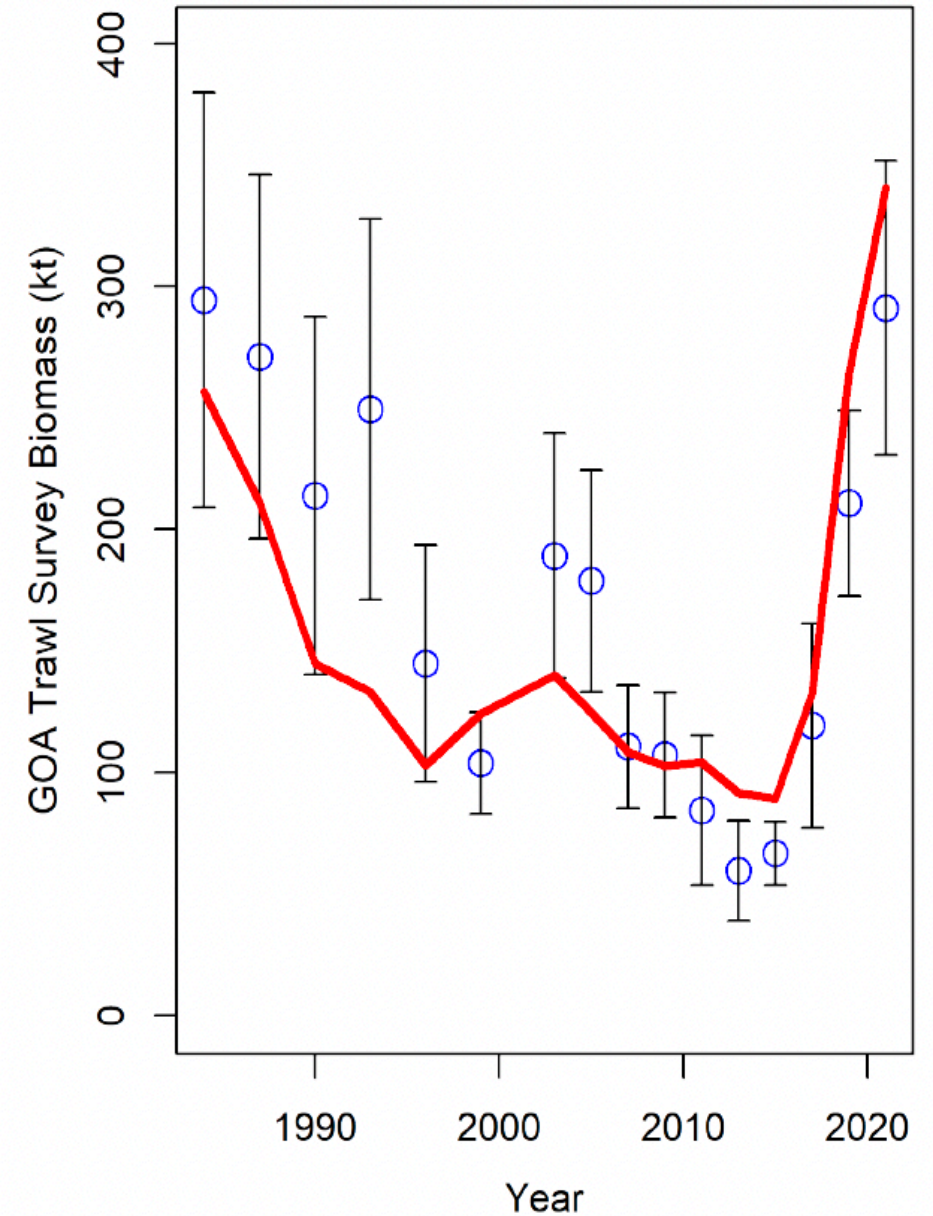
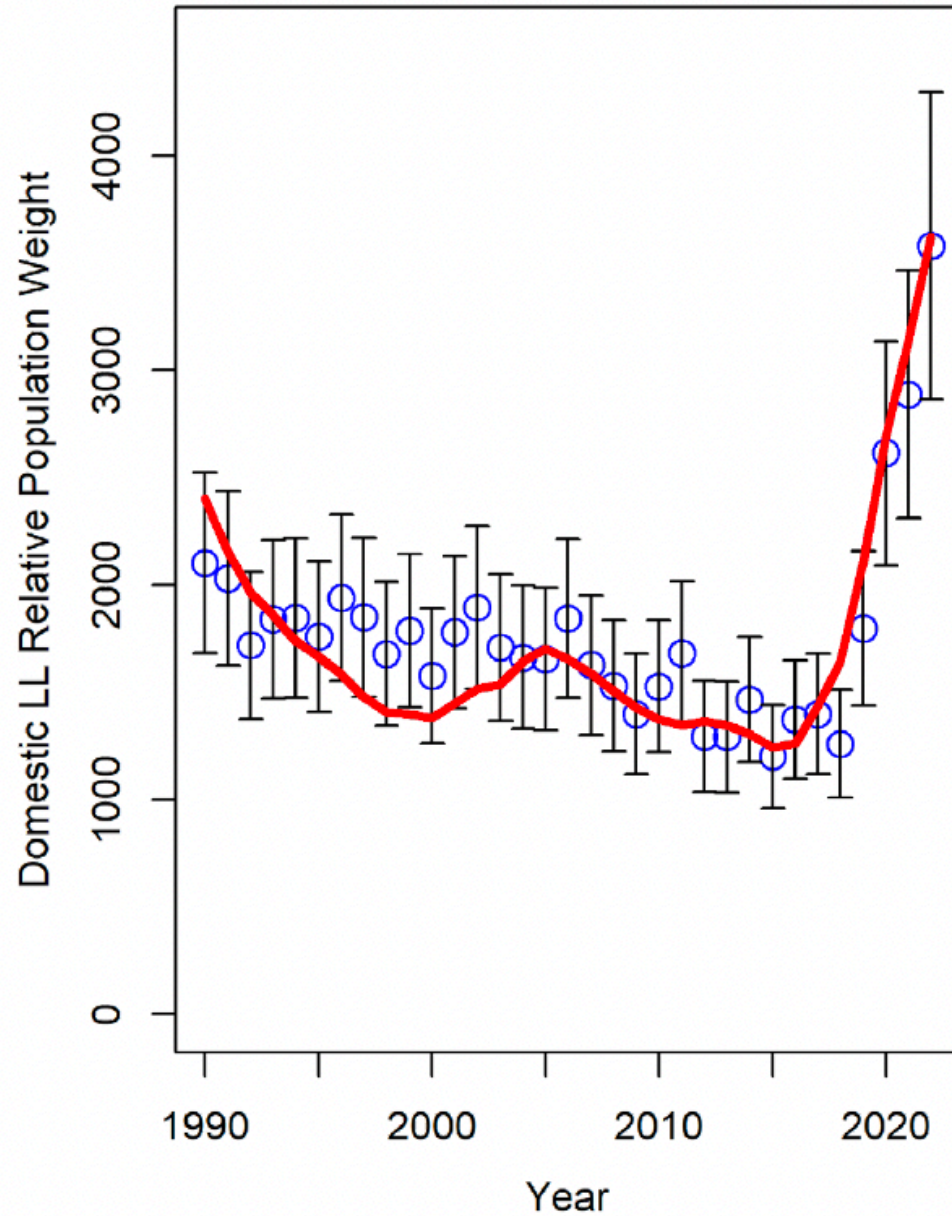
**40% Increase  
(in 2021)**

**CPUE Increasingly Unreliable  
due to Increase in Pot Gear**



# Sablefish assessment

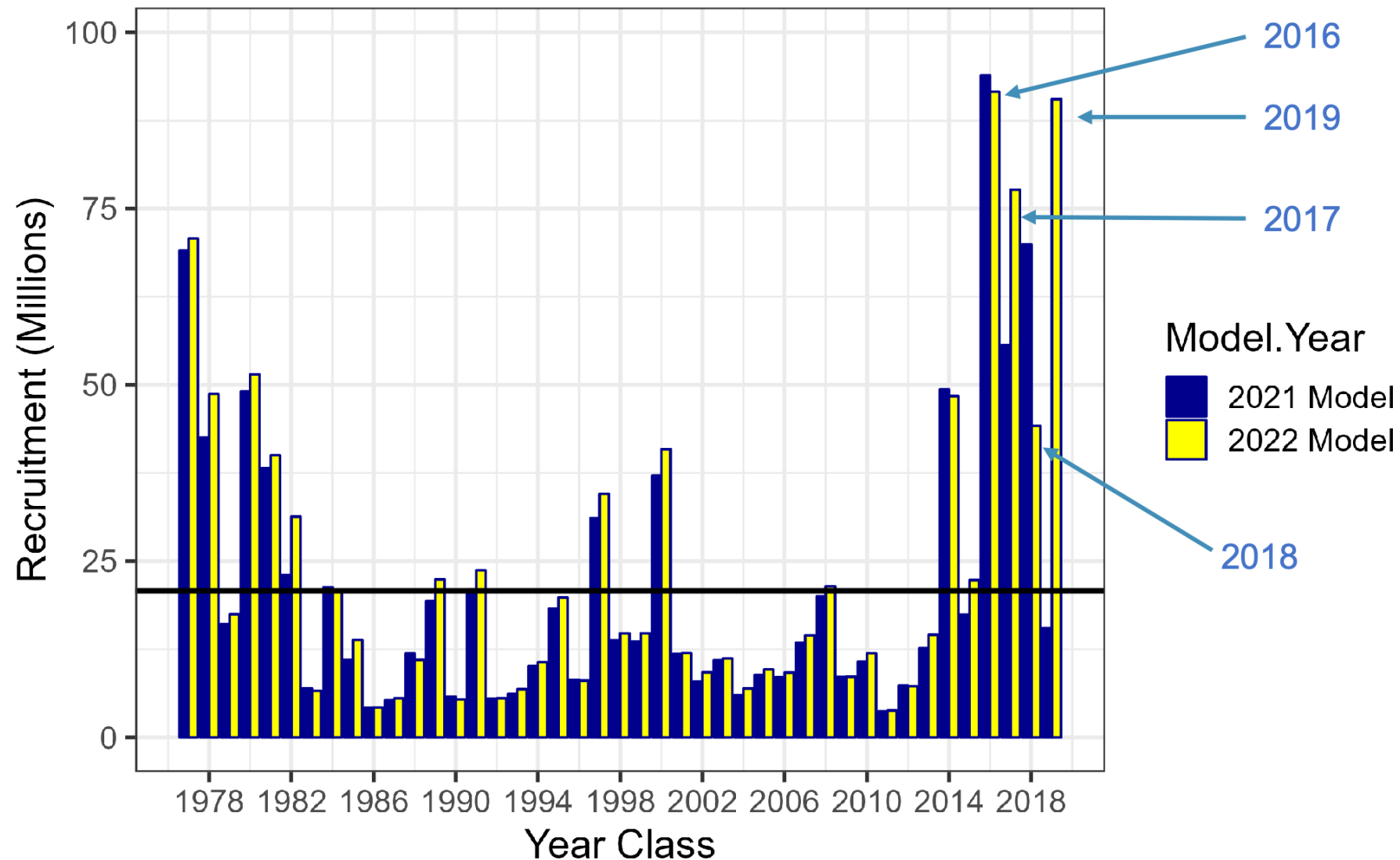
Fits to  
indices



# Sablefish assessment

## Recruitment

2016 largest on record?  
2017 & 2019 big too...  
(but 2019 highly uncertain)



# Sablefish assessment

## Summary:

- SSB increasing
- 2023 ABC = 40,502 t (*3rd highest catch*, if full ABC taken)

## Apportionment:

- Incremental based on 5-year average survey biomass proportions
- Year 3 (75%) of the SSC 4-year stair step



# Sablefish assessment- Summary Table

Quantity/Status	As estimated or specified <i>last</i> year for (model 21.12):		As estimated or recommended <i>this</i> year for (model 21.12):	
	2022*	2023*	2023*	2024*
$M$ (natural mortality rate, estimated)	0.100	0.100	0.105	0.105
Tier	3a	3a	3a	3a
Projected total (age 2+) biomass (t)	574,599	582,536	678,562	675,058
Projected female spawning biomass (t)	128,789	153,820	159,788	186,126
$B_{100\%}$	295,351	295,351	305,595	305,595
$B_{40\%}$	118,140	118,140	122,238	122,238
$B_{35\%}$	103,373	103,373	106,958	106,958
$F_{OFL}$	0.094	0.094	0.096	0.096
$maxF_{ABC}$	0.080	0.080	0.081	0.081
$F_{ABC}$	0.080	0.080	0.081	0.081
OFL (t)	40,839	42,948	47,857	49,040
<b>OFL<sub>w</sub> (t)**</b>	<b>40,432</b>	<b>42,520</b>	<b>47,390</b>	<b>48,561</b>
max ABC (t)	34,863	36,670	40,861	41,876
ABC (t)	34,863	36,670	40,861	41,876
<b>ABC<sub>w</sub> (t)**</b>	<b>34,521</b>	<b>36,318</b>	<b>40,502</b>	<b>41,539</b>
Status	As determined <i>last</i> year for:		As determined <i>this</i> year for:	
	2020	2021	2021	2022
Overfishing	No	n/a	No	n/a
Overfished	n/a	No	n/a	No
Approaching overfished	n/a	No	n/a	No



# Sablefish

Author recommended 2023 ABC (with whale depredation adjustments and assuming a 75% stair step).

Area	AI	BS	WG	CG	WY*	EY*	Total
2022 ABC	6,486	5,305	3,821	10,008	3,179	6,064	34,863
2023 ABC	8,892	8,450	4,533	9,972	2,970	6,044	40,861
2019 - 2021 avg. depredation	6	21	51	52	63	147	340
Ratio 2023:2022 ABC	1.37	1.59	1.19	1.00	0.93	1.00	1.17
Deduct 3 year adjusted average	-8	-33	-60	-51	-60	-147	-359
<b>**2023 ABC<sub>w</sub></b>	8,884	8,417	4,473	9,921	2,910	5,897	40,502
Change from 2022 ABC <sub>w</sub>	37%	60%	20%	0%	-15%	4%	17%

\*Before 95:5 hook and line : trawl split between WY and EY/SE shown below.

\*\*ABC<sub>w</sub> is the author recommended ABC that accounts for whale depredation.

# Working group discussions

The Teams requested the SSC recommend the AFSC (and ADF&G, where appropriate) to consider two proposals for working groups:

- 1) a WG focused on data-limited/Tier 6 methods, and
- 2) A working group that addresses current policies affecting harvest control rules and develop new approaches for accounting for changes in ecosystems related to climate change, including the exploration of environmental data to help inform recruitment.

The Teams noted there are projects already funded that may be of benefit to both of these working group objectives and encourage researchers to work together on these issues.

# Risk tables

## **Joint Teams discussed risk table issues:**

Application varies across assessments

Rationales were reviewed and judged as reasonable

# Economic SAFE chapter

## SSC Review in Feb 2023

- Teams received a presentation, noted accessibility of data and information
- Intro-sections of BSAI and GOA SAFEs contain summary of relevant changes in conditions