

INTERNATIONAL PACIFIC



HALIBUT COMMISSION

# Outcomes of the 100<sup>th</sup> Session of the IPHC Annual Meeting (AM100)


NPFMC meeting  
Agenda item B8  
8 February 2024



# 100<sup>th</sup> Session of the IPHC Annual Meeting (AM100)

- 22 - 26 January 2024
- Held in Anchorage, AK, USA (Hybrid)
- 241 attendees: 6 Commissioners, 14 advisors/experts, and 221 members of the public (124 in-person and 97 remote).
- AM100 webpage:

<https://www.iphc.int/meetings/100th-session-of-the-iphc-annual-meeting-am100/>



INTERNATIONAL PACIFIC  
HALIBUT COMMISSION

IPHC-2024-AM100-R

---

**Report of the 100<sup>th</sup> Session of the IPHC Annual Meeting (AM100)**

---

Anchorage, Alaska, U.S.A., 22-26 January 2024

**Commissioners**

Canada	United States of America
Paul Ryall	Jon Kurland
Neil Davis	Robert Alverson
Peter DeGreef	Richard Yamada

**Executive Director**  
David T. Wilson, Ph.D.

---

<b>DISTRIBUTION:</b> Participants in the Session Members of the Commission IPHC Secretariat	<b>BIBLIOGRAPHIC ENTRY</b> IPHC 2024. Report of the 100 <sup>th</sup> Session of the IPHC Annual Meeting (AM100). Anchorage, Alaska, U.S.A. 22-26 January 2024. <i>IPHC-2024-AM100-R, 55 pp.</i>
--	--

---

Page 1 of 55

# 2024 Adopted mortality limits (TCEYs)

IPHC Regulatory Area	Million Pounds	Tonnes	% change from 2023
<b>Canada Total: 2B</b>	<b>6.47</b>	<b>2,934.74</b>	<b>-4.57%</b>
USA: 2A	1.65	748.43	0.00%
USA: 2C	5.79	2,626.30	-1.03%
USA: 3A	11.36	5,152.81	-5.96%
USA: 3B	3.45	1,564.89	-5.99%
USA: 4A	1.61	730.28	-6.94%
USA: 4B	1.25	566.99	-8.09%
USA: 4CDE	3.70	1,678.29	-3.90%
<b>USA: Total</b>	<b>28.81</b>	<b>13,068.00</b>	<b>-4.57%</b>
<b>Total: IPHC Convention Area</b>	<b>35.29</b>	<b>16,007.27</b>	<b>-4.57%</b>

Coastwide decrease from 2023 = **4.57%**

Fishing intensity =  $F_{52\%}$

# Detailed 2024 projections, by sector

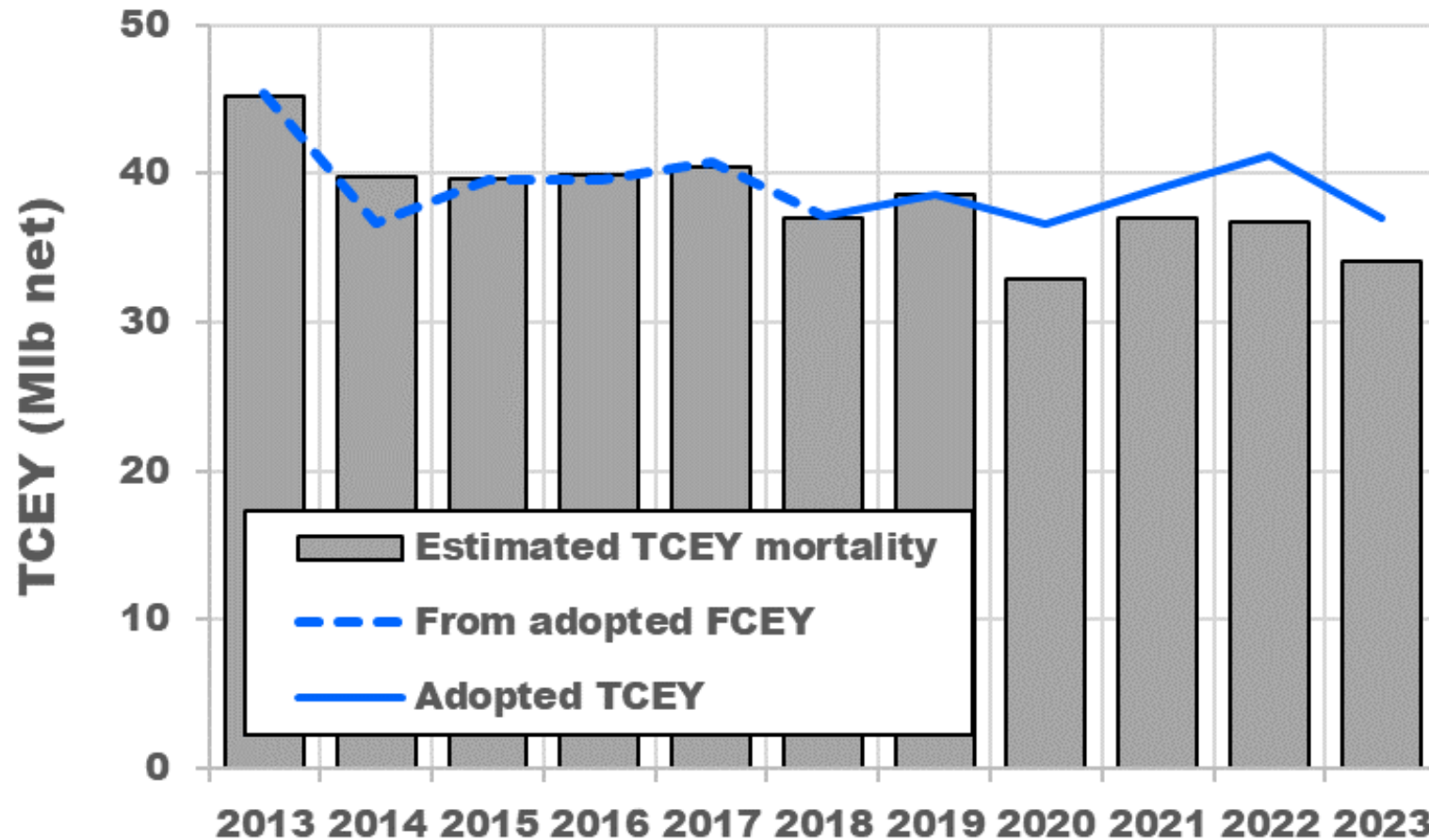
	2A	2B	2C	3A	3B	4A	4B	4CDE	Total
Commercial discards	0.11	0.18	NA	NA	0.24	0.04	0.01	0.08	0.66
O26 Non-directed discards	0.08	0.29	0.06	0.25	0.22	0.27	0.14	1.55	2.86
Recreational	NA	0.03	1.07	0.99	0.01	0.01	0.00	0.00	2.09
Subsistence	NA	0.41	0.25	0.12	0.01	0.00	0.00	0.01	0.81
Total non-FCEY	0.18	0.91	1.37	1.36	0.47	0.33	0.16	1.64	6.42
Commercial discards	NA	NA	0.11	0.54	NA	NA	NA	NA	0.66
Recreational	0.61	0.83	0.81	1.89	NA	NA	NA	NA	4.14
Subsistence	0.02	NA	NA	NA	NA	NA	NA	NA	0.02
Commercial landings	0.83	4.73	3.50	7.56	2.98	1.28	1.09	2.06	24.03
<b>Total FCEY</b>	1.47	5.56	4.42	10.00	2.98	1.28	1.09	2.06	28.86
							4C FCEY	0.92	
							4D FCEY	0.92	
							4E FCEY	0.22	
<b>TCEY</b>	1.65	6.47	5.79	11.36	3.45	1.61	1.25	3.70	35.28
U26 Non-directed discards	0.00	0.04	0.00	0.18	0.09	0.13	0.01	1.11	1.56
<b>Total</b>	1.65	6.51	5.79	11.54	3.54	1.74	1.26	4.81	36.84



# Stock assessment data summary

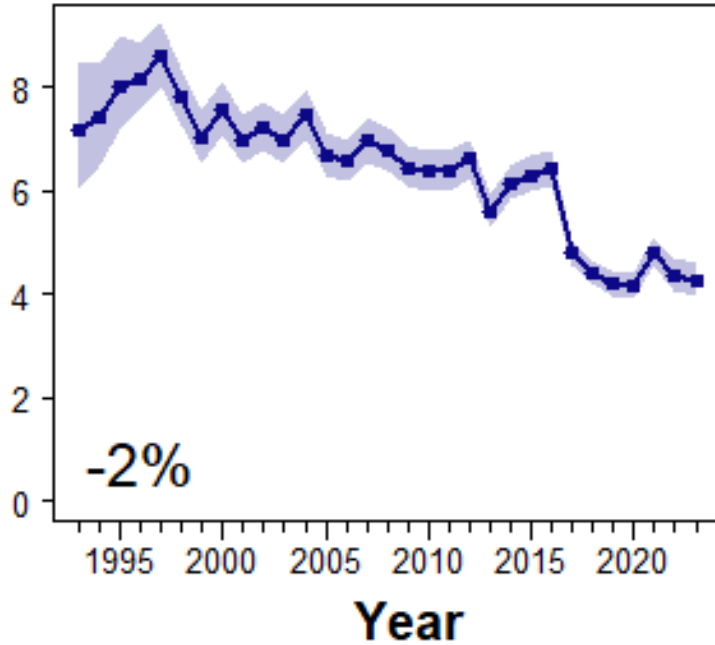
- Data trends: FISS down 2-4% (numbers/pounds), fishery down 12%
- Important age classes:
  - The 2012 year-class represented the largest component of fishery and FISS catches in 2023.
  - Both 2012 and 2014 year-classes are estimated to be smaller than 2005, with weak year-classes from 2006-2011
  - Possible 2016-2018 year-classes, but no clear information yet
- Biology: weight-at-age is stable to increasing
- Spawning biomass: low biomass relative to the last 30 years, trend is nearly flat
- Fishing intensity: 2023 was the lowest in recent years ( $F_{52\%}$ )

# Recent mortality and mortality limits (TCEYs)

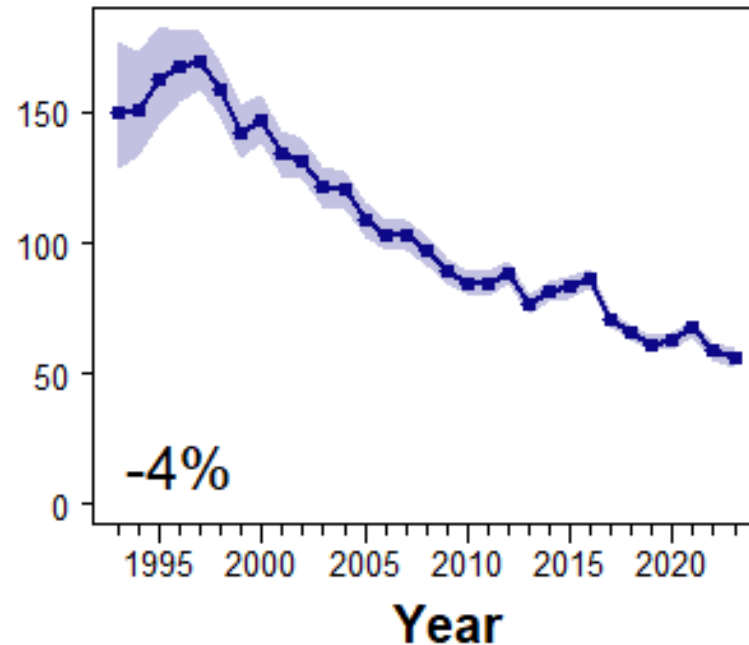


# Coastwide FISS trends

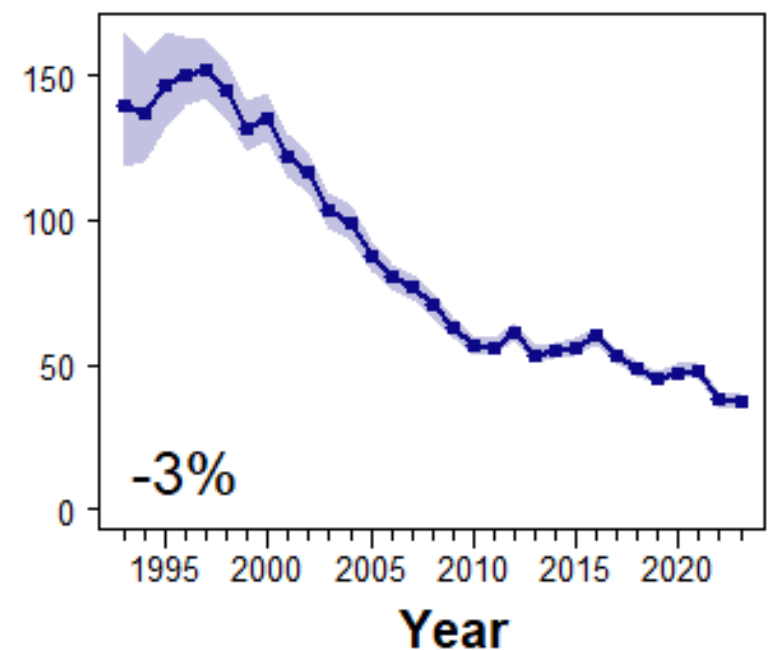
Numbers/skate



Total pounds/skate

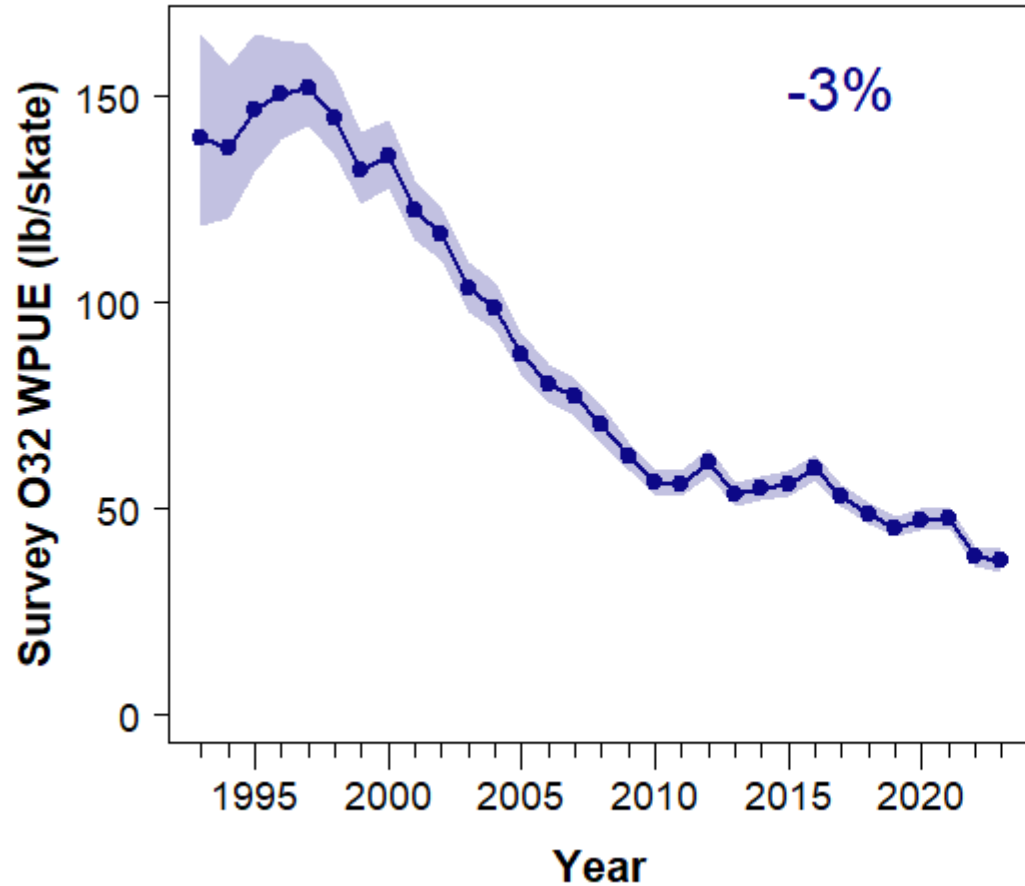


O32 pounds/skate

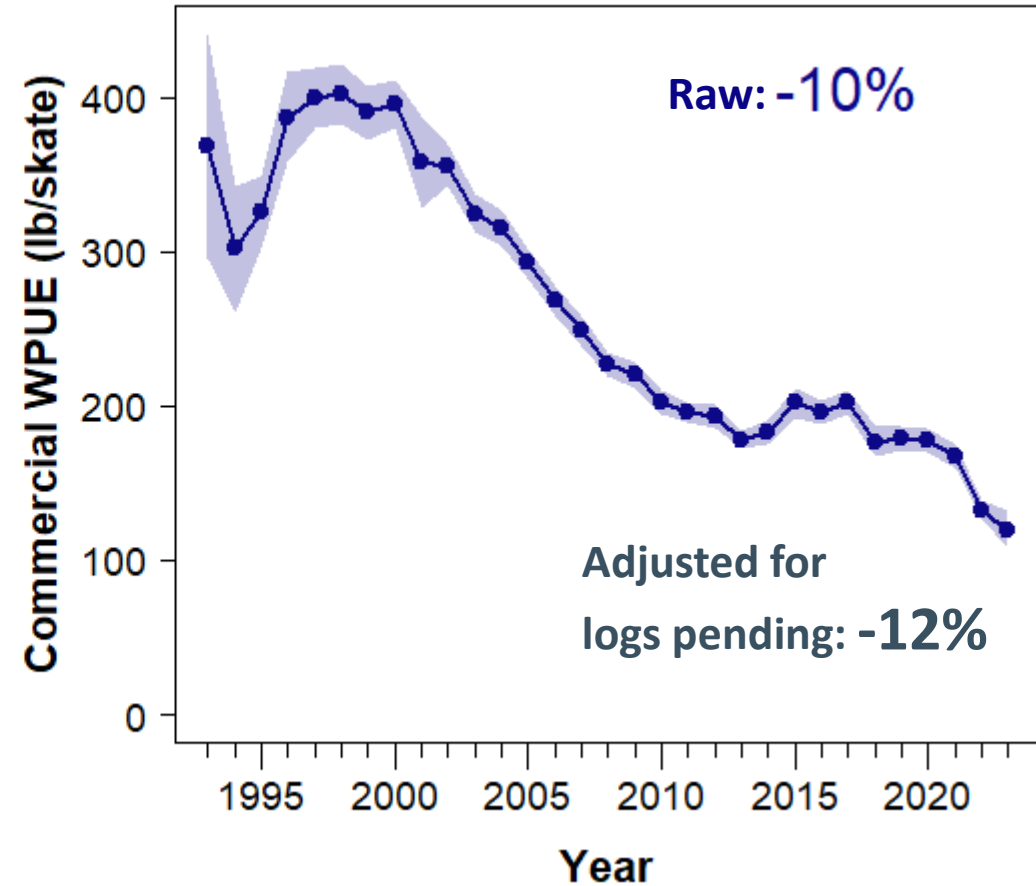


# FISS and Fishery– Weight-Per-Unit-Effort

### Coastwide survey

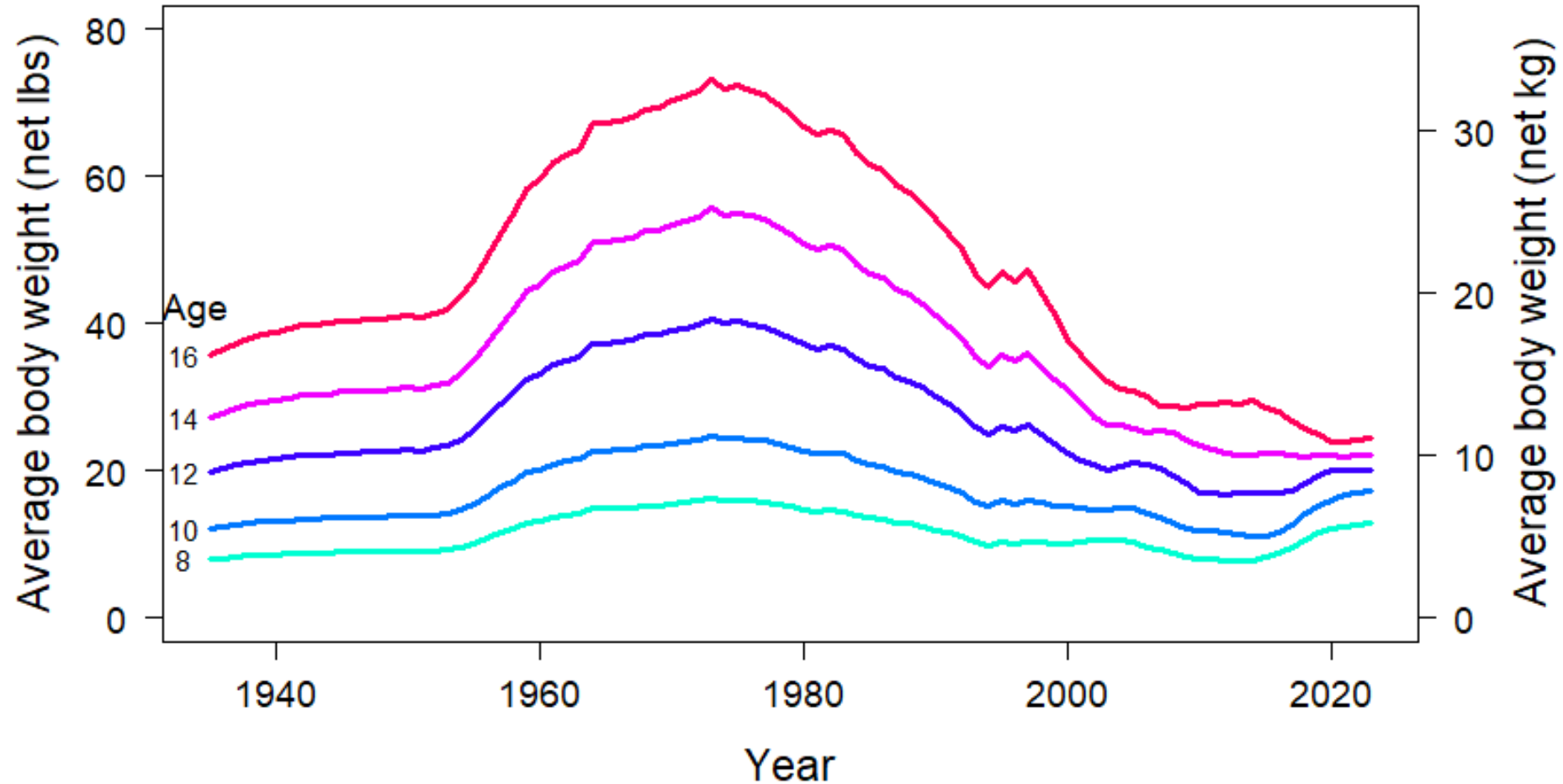


### Coastwide commercial

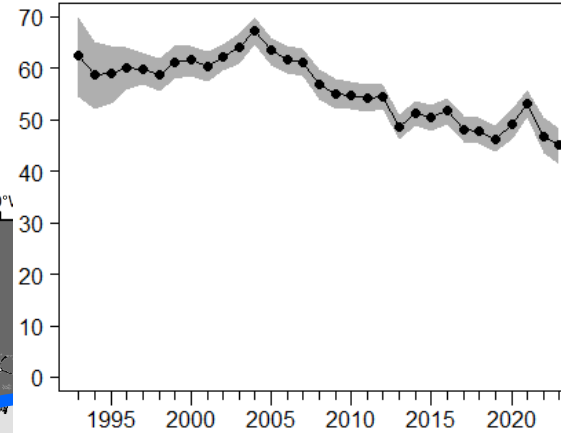
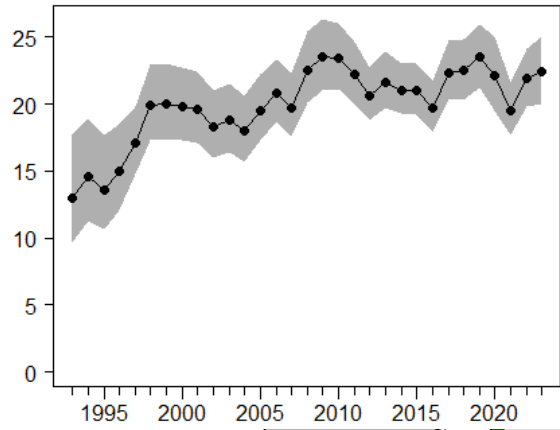




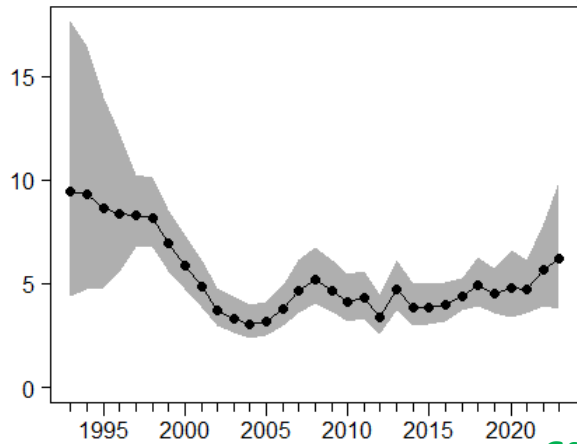
# Female coastwide weight-at-age



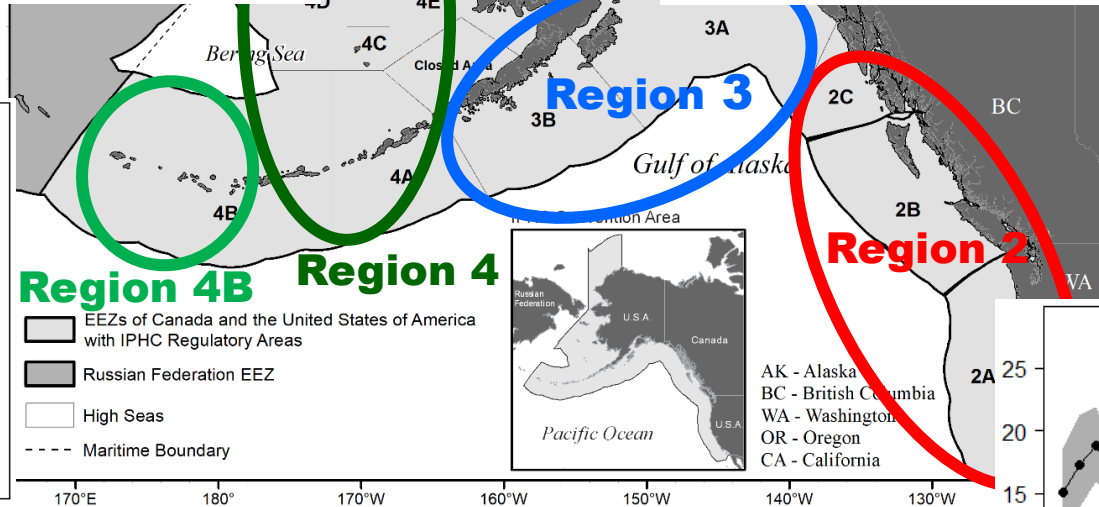
# Stock distribution (all sizes)



45% - Lowest observed



6% - But no sampling in 2023



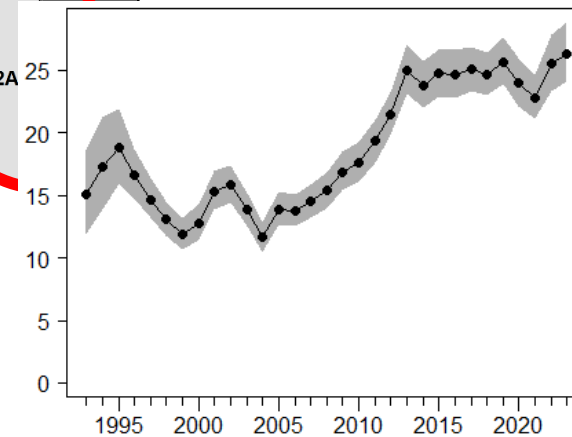
■ EEZs of Canada and the United States of America with IPHC Regulatory Areas  
 ■ Russian Federation EEZ  
 □ High Seas  
 - - - Maritime Boundary

AK - Alaska  
 BC - British Columbia  
 WA - Washington  
 OR - Oregon  
 CA - California

Region 2

Region 3

Region 4B Region 4



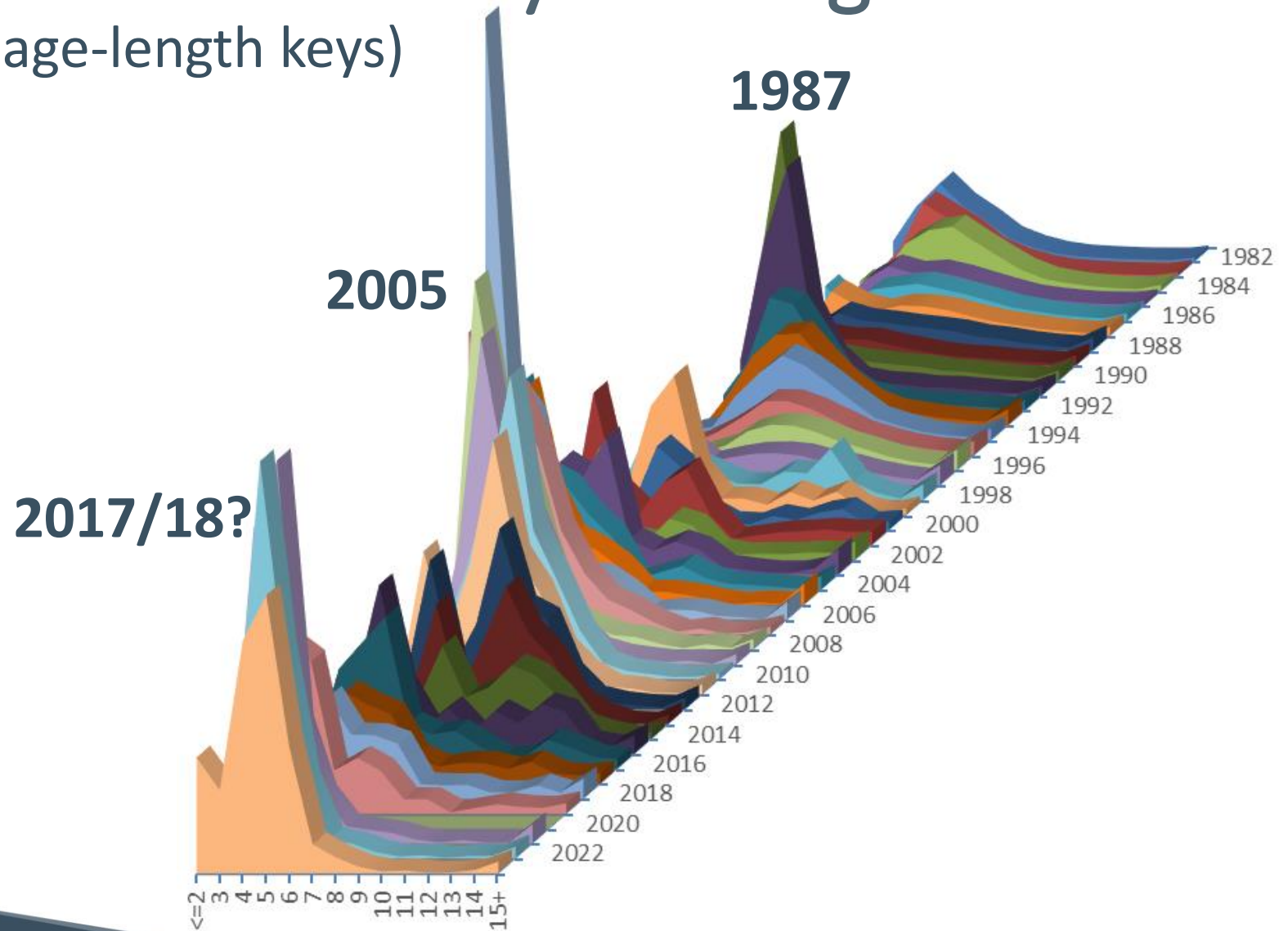
26% - Highest observed

# NOAA Fisheries trawl survey - Bering Sea

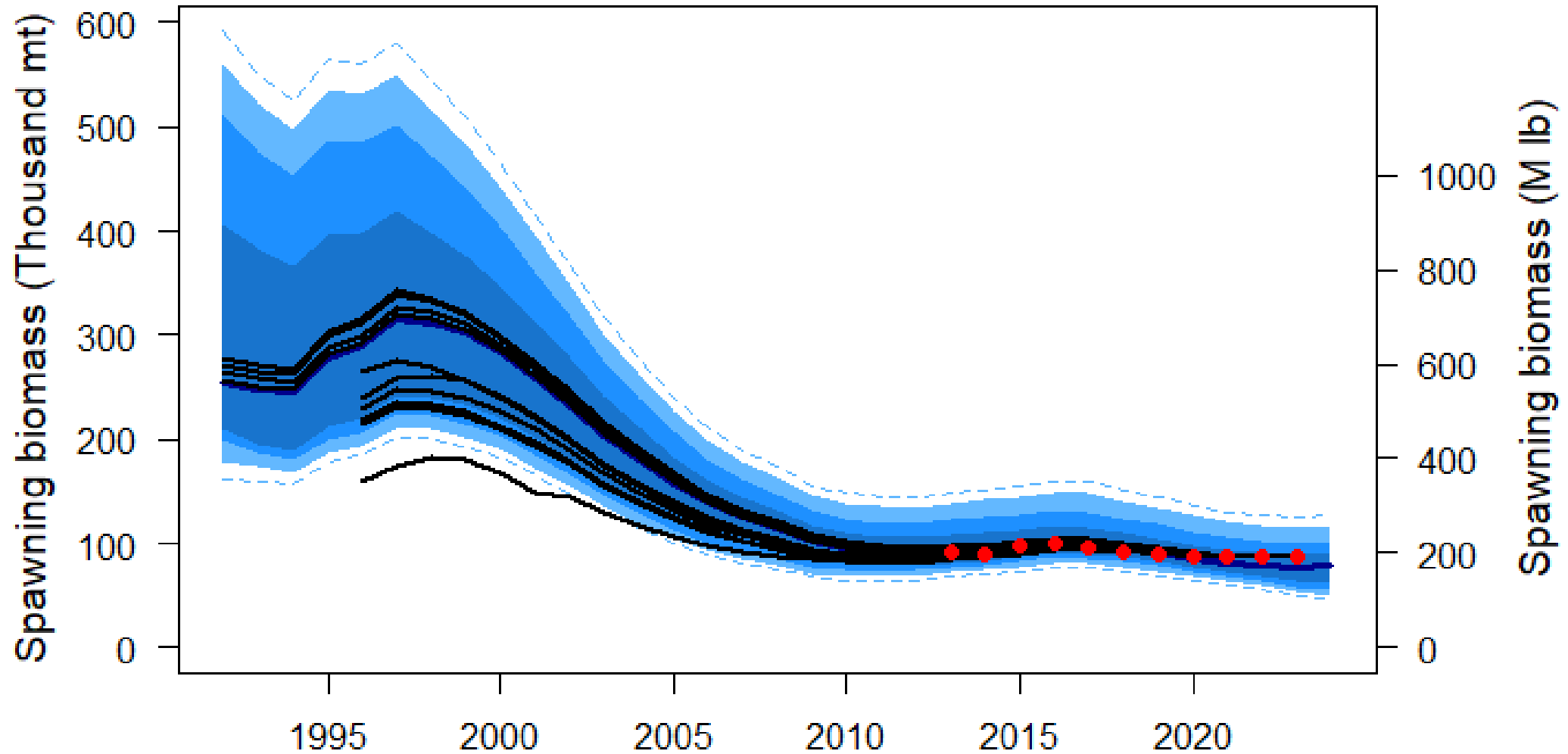
(Numbers at age from age-length keys)

## Caveats:

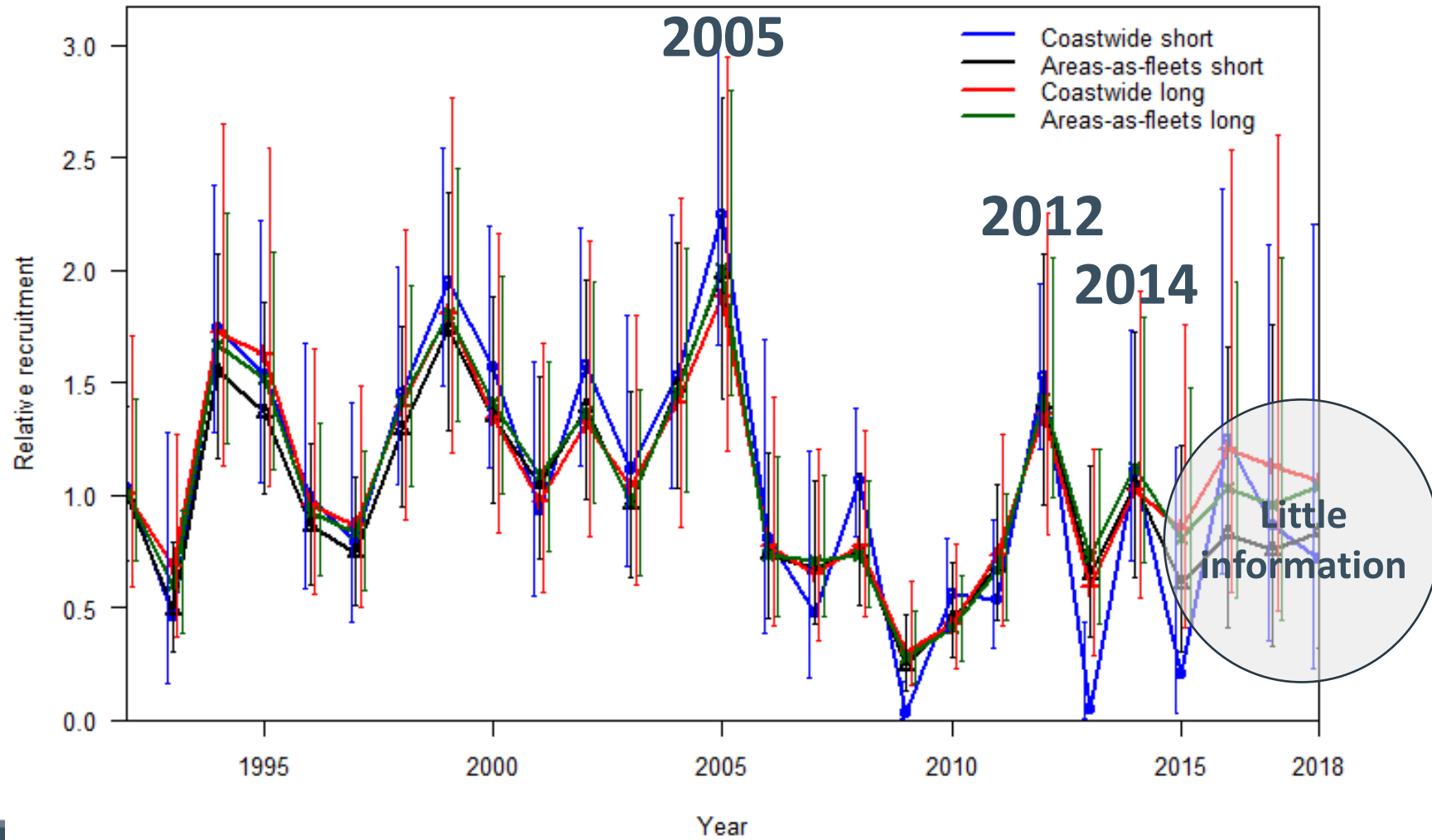
- Not all Pacific halibut recruitment occurs in the Bering Sea
- 1987 was a much larger coastwide recruitment than 2005
- It will be 1-3 years before we get good direct estimates of the 2017/18 cohorts in the FISS and commercial fisheries



# Comparison to previous assessments

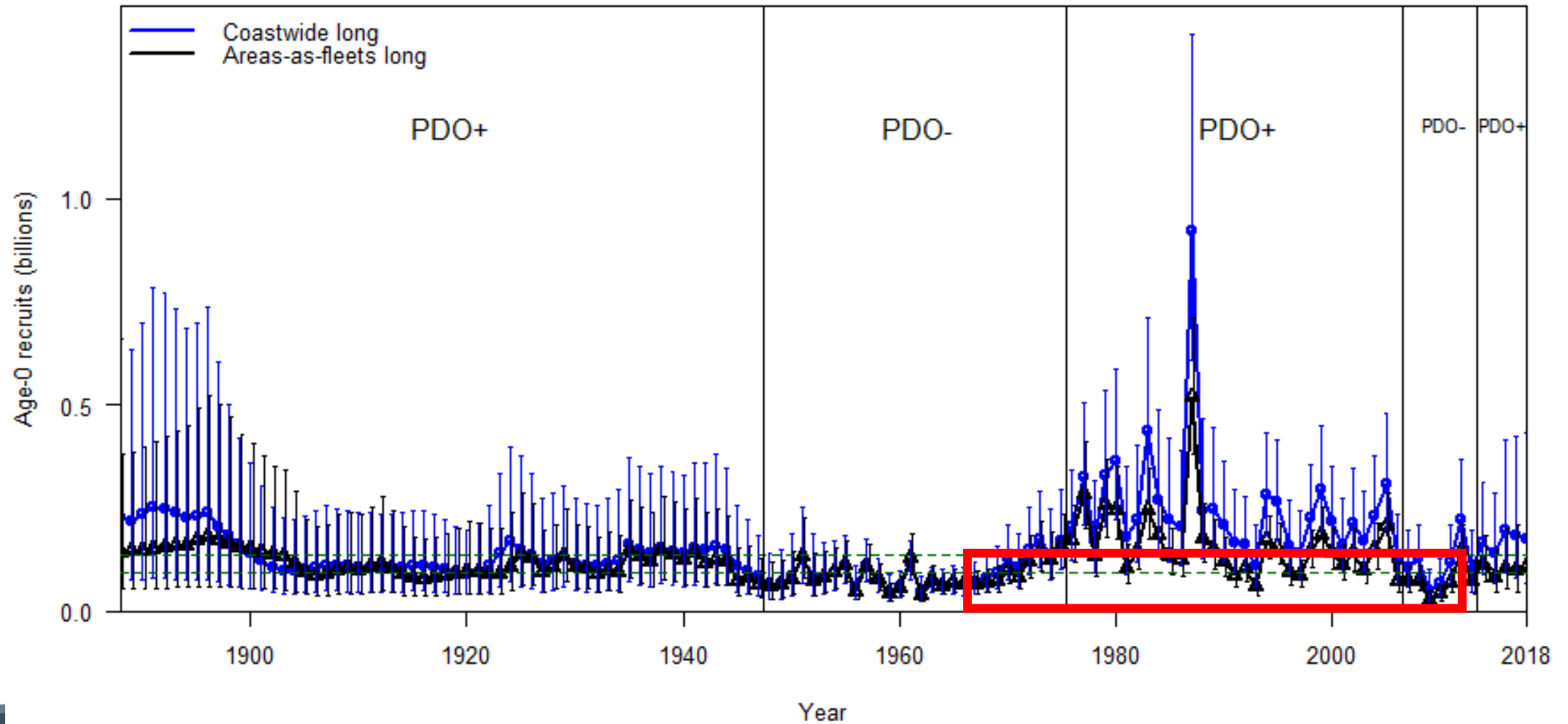


# Relative recruitment estimates





# Historical recruitment estimates





# Projection summary

- Adopted coastwide mortality limit of 35.29 Mlbs has a 41% chance of a decrease in spawning biomass over the next three years
  - *Status quo* mortality (36.97 Mlbs) would have resulted in a 45% chance of further decline
- Adopted mortality limit corresponds to an  $F_{52\%}$  level of fishing intensity
- Projected trends rely heavily on the 2012 year-class continuing to mature at historical rates (from 42% mature to 80% mature over the next 3 years)
- Biomass and productivity are currently low relative to the long-term average; this is likely to persist in the near term

# For more data and assessment information

Summary for AM100:

- [IPHC-2024-AM100-10](#)
- *Data overview and stock assessment for Pacific halibut (Hippoglossus stenolepis) at the end of 2023 (I. Stewart, A. Hicks, R. Webster, D. Wilson)*
- [IPHC-2024-AM100-12](#)
- *Stock projections and harvest decision table for 2024-2026 (I. Stewart & A. Hicks)*
- Assessment and data overview documents are available through the stock assessment page of the IPHC's [website](#):

Document	Title	PDF	Availability
IPHC-2024-SA-01	Assessment of the Pacific halibut ( <i>Hippoglossus stenolepis</i> ) stock at the end of 2023 (I. Stewart & A. Hicks)		05 Jan 2024
IPHC-2024-SA-02	Overview of data sources for the Pacific halibut stock assessment, harvest policy, and related analyses (I. Stewart & R. Webster)		05 Jan 2024

# 100<sup>th</sup> Session of the IPHC Annual Meeting (AM100)

Other decisions:

- Fishing periods and timings
- Update and alignment of log requirements
- Charter management measures in IPHC Regulatory Areas 2C and 3A

# 2024 Commercial Fishing Periods

The Commission **ADOPTED** fishing periods for 2024:

Commercial fishing for Pacific halibut in all IPHC Regulatory Areas may begin no earlier than **06:00 local time on 15 March** and must cease at **23:59 local time on 07 December**.



# Update and alignment of log requirements

1. Logs that were not collected previously by the Commission are required to be submitted within 30 days following the end of the fishing season.
2. Data must be recorded by set and include location coordinates.
3. The hook-and-line logbook previously provided by the Petersburg Vessel Owners Association is no longer listed as an approved logbook.
4. All logbook entries must be written clearly and legibly.
5. IPHC will now accept electronic logbooks that are approved by NOAA Fisheries.
6. IPHC is also authorized to approve electronic equivalents to the IPHC logbook. Pilot program is scheduled for 2024.

# 2024 Charter Management Measures

## **For IPHC Regulatory Area 2C:**

- one fish bag limit with size limit of less than or equal to 40 inches or greater than or equal to 80 inches from 1 February to 14 July, and less than or equal to 36 inches or greater than or equal to 80 inches from 15 July to 31 December, closed on any Friday from 19 July to 13 September.

## **For IPHC Regulatory Area 3A:**


- two-fish bag limit with one fish of any size and a second fish less than or equal to 28 inches, Wednesdays closed to retention of Pacific halibut, one trip per vessel, one trip per CHP per day, and no annual limit

# Looking ahead

- The Commission **accepted** the offer by Canada to host the 101<sup>st</sup> Session of the IPHC Annual Meeting in British Columbia, at a location to be announced, from 27 to 31 January 2025.
- Management Strategy Advisory Board (MSAB19): 1-3 May , Seattle.
- Scientific Review Board (SRB024): 18-20 June, Seattle.

# 100<sup>th</sup> Session of the IPHC Annual Meeting (AM100)

- AM100 webpage:  
<https://www.iphc.int/meetings/100th-session-of-the-iphc-annual-meeting-am100/>



INTERNATIONAL PACIFIC  
HALIBUT COMMISSION

IPHC-2024-AM100-R

---

**Report of the 100<sup>th</sup> Session of the IPHC Annual Meeting (AM100)**

---

Anchorage, Alaska, U.S.A., 22-26 January 2024

**Commissioners**

Canada	United States of America
Paul Ryall	Jon Kurland
Neil Davis	Robert Alverson
Peter DeGreef	Richard Yamada

**Executive Director**  
David T. Wilson, Ph.D.

---

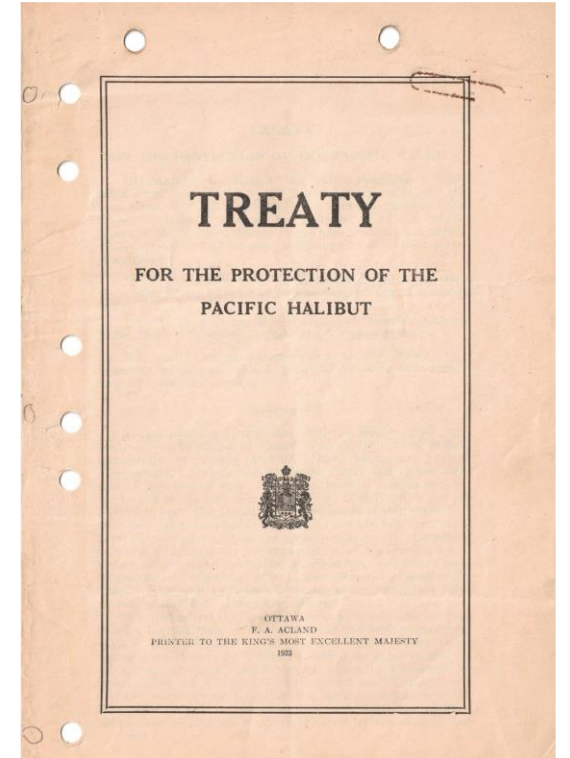
<b>DISTRIBUTION:</b> Participants in the Session Members of the Commission IPHC Secretariat	<b>BIBLIOGRAPHIC ENTRY</b> IPHC 2024. Report of the 100 <sup>th</sup> Session of the IPHC Annual Meeting (AM100). Anchorage, Alaska, U.S.A. 22-26 January 2024. <i>IPHC-2024-AM100-R, 55 pp.</i>
--	--

---

Page 1 of 55

# The Treaty

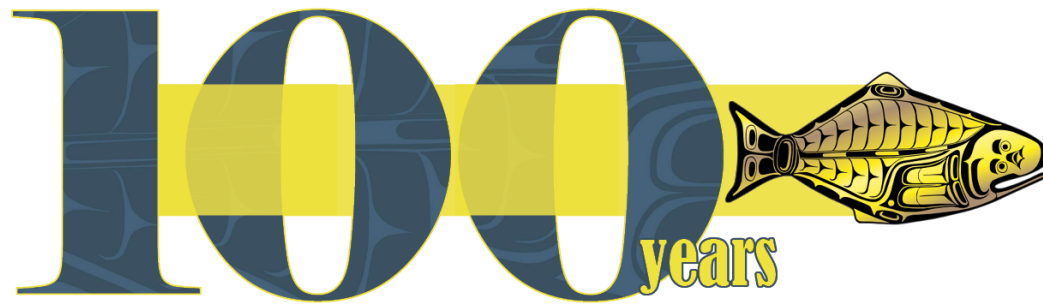
- The IPHC Convention was signed on 2 March 1923 (by both Contracting Parties), ratified by the US Senate on 31 May 1924, then by the President on 4 June 1924, and finally by Great Britain on 21 July 1924.
- Ratifications were **exchanged** on 21 October 1924 and proclaimed on 22 October 1924.
- The convention came into force on the date of **exchange**, 21 October 1924.
- US President: Calvin Coolidge      King of England: George V



The IPHC will turn 100 on  
21 October 2024



INTERNATIONAL PACIFIC



HALIBUT COMMISSION

