
C3 SCALLOP SAFE

AP/Council REVIEW

APRIL 2023

TYLER JACKSON , SARAH RHEINSMITH, SCOTT MILLER



SCALLOP PLAN TEAM

Tyler Jackson	(ADF&G Kodiak) <i>Co-Chair</i>
Sarah Rheinsmith	(NPFMC) <i>Co-Chair</i>
Ryan Burt	(ADF&G Kodiak)
Mike Byerly	(ADF&G Homer)
Scott Miller	(NMFS Juneau)
Andrew Olson	(ADF&G, Douglas)
Skylar Bayer	(NMFS Juneau)
<i>Vacant</i>	<i>(ADF&G)</i>



Special thanks to ...

Kendall Henry	(ADF&G Juneau)
Alyssa Hopkins	(ADF&G Kodiak)



TOPICS



- 2023 stock status
- 2022 dredge survey
 - Dredge transition
- Fishery update
- Retained-not-landed Meats
- Age Structured Model Development
- Council Motion
- Socioeconomics



STOCK STATUS

- Stock status is “**unknown**”
- As per FMP:
 - OFL = **1.284 million lb meats**
 - ABC = **1.156 million lb meats** (ABC control rule)
- Total removals suggest **overfishing did not occur** in 2021/22 or 2022/23
 - 2021/22 total removals = 311,978 lb meats
 - 2022/23 total removals = 345,690 lb meats



2022 ADF&G DREDGE SURVEY

■ Kodiak Shelikof, Northeast and Kamishak Districts

Bed	Last Survey	Abundance $\geq 100\text{mm}$	Abundance $< 100\text{ mm}$	MW Biomass	MW:SH	MW:RW
KSHI	2020	↑	↑	↑	↓	↑
KNE1	2020	↓	↓	↑		
KNE2	2020	↑	↑	↑		
KNE3	2020	↑	↓	↑		
KNE5	2020	↓	↓	↓		
KNE6	2020	↑	↑	↑		
KNE (All)		↑	↓	↑	↔	↑
KAMN	2019	↑	↑	↓	↓	↓

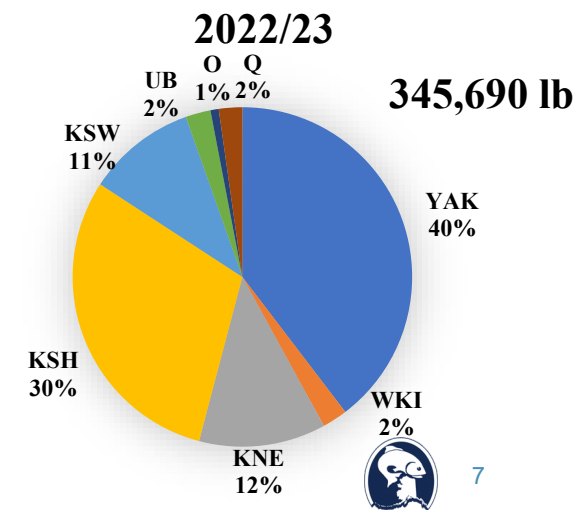
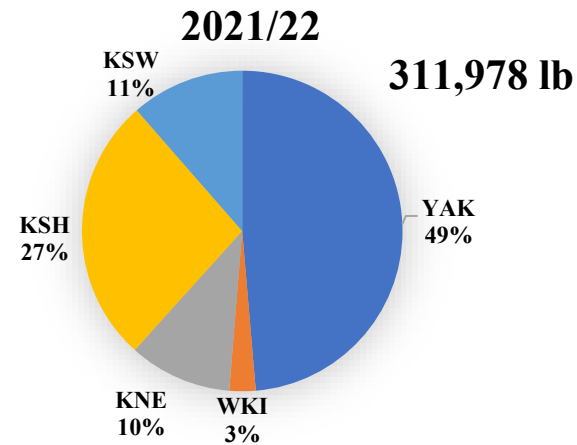
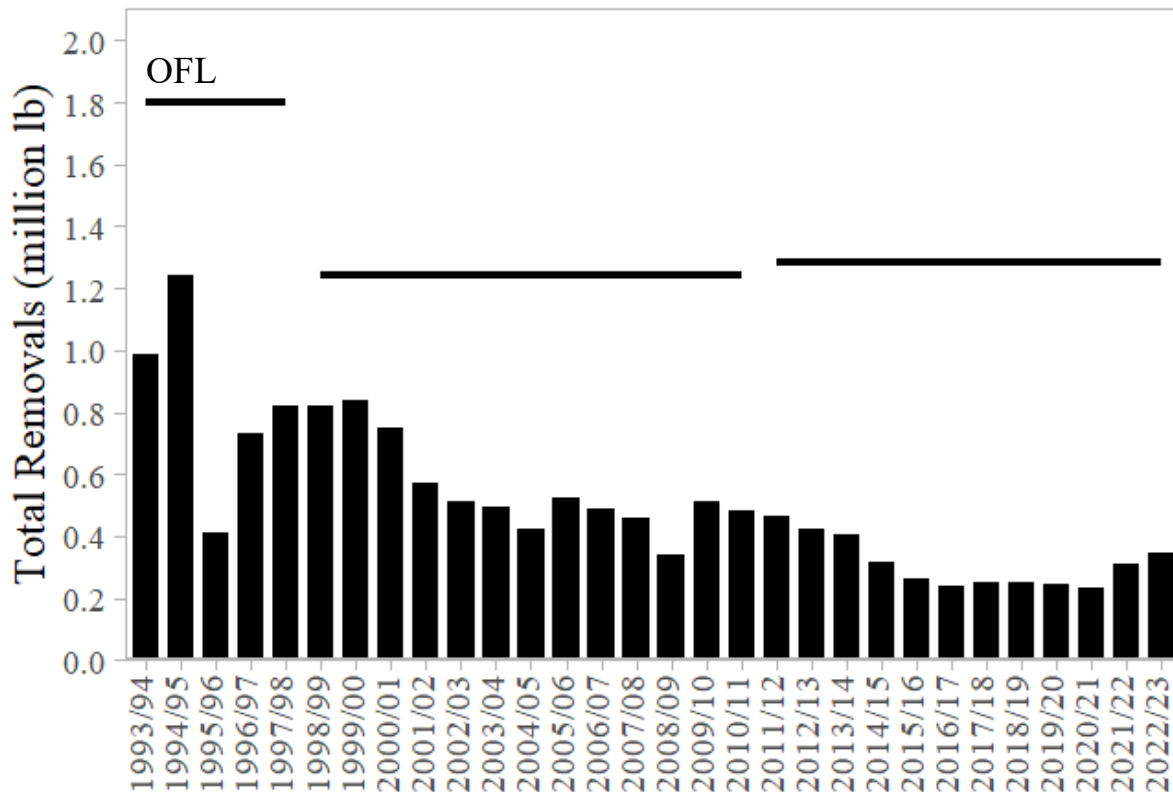


SURVEY DREDGE TRANSITION

- New survey dredges purchased
 - East coast manufactured
 - Documented and tested design
- 2022 survey troubleshooted towing parameters
- 2023 survey will collect systematic sxs samples



FISHERY MANAGEMENT UPDATE



RETAINED-NOT-LANDED MEATS

Retained-Not-Landed (RNL) meats are scallop meats that are not discarded as whole animals, but are not 'landed'

Unaccounted discard mortality that does not count towards GHL

Sources:

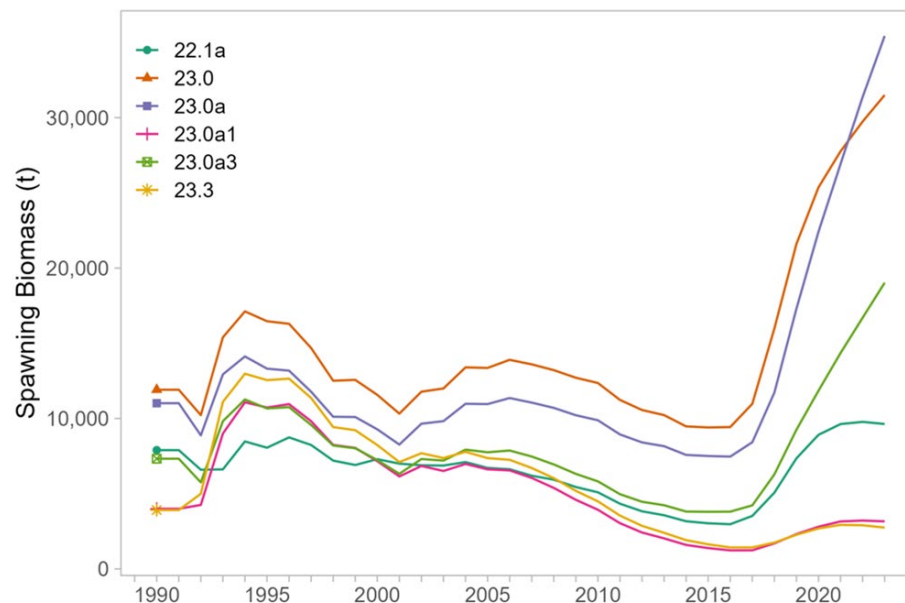
- unmarketable meat (e.g., poor color, texture)
- damaged during shucking (e.g., weak meat)
- mistake (e.g., fall out of baskets, etc)

Initial estimates were anomalously high, more work must be done to fine tune estimation approach



AGE STRUCTURE MODEL DEVELOPMENT

- Updated CPUE standardization based on AIGKC assessment
- Fit six models, five of which included discard mortality
- All models fit data reasonably well, with some clear misspecification
- SPT recommended author to continue with 2 models and troubleshoot areas of concern



FMP AMENDMENT

Options:

- 1) Status quo – set harvest specification annually
- 2) Revise scallop FMP to remove language of requirements to set annual specifications – move to biennial or triennial schedule

- SPT supported the proposed amendment



Questions?



Scallop SAFE 2023: Socioeconomic Update

Prepared by Scott A. Miller, Industry
Economist, NOAA Fisheries, Juneau.



LLP Ownership Transfers

- LLP (004) was transferred from Scott Hulse to Ty W. Babb, of Maine, in 2022; no known vessel was associated.
- LLP(004) was again transferred in 2022 from Ty W. Babb to Provider Fisheries LLC, a cooperative member
- LLPs 003 was transferred from Atlantic Capes Fisheries Inc. to Arctic Hunter LLC, a cooperative member
- EWT LLC continues to own LLP 006, no vessel associated
- The vessel Kilkenny (homeported in Kodiak), is owned by Atlantic Capes Fisheries Inc. but no longer has a scallop LLP associated with it. Historically Kilkenny delivered fresh scallop meats for marketing in Kodiak and Homer.
- No State of Alaska waters registrants have fished since the management plan was adopted.



LLP Ownership Information: Cooperative Affiliated

- No known change in cooperative membership or cooperative affiliated LLP ownership shares
- Cooperative members collectively own three vessels qualified to fish their LLPs; the Polar Sea (LLP 005, LLP 003), the Provider (LLP 008, LLP 004), and the Ocean Hunter (LLP 007, LLP 009).
- LLP 002 (American Seafoods) and LLP 010 (Alaska Scallop Fisheries LLC) are also cooperative members.
- Provider is exclusively used to fish scallops, Polar Sea and Ocean Hunter may also participate in the Crab Rationalization Program fisheries
- Cooperative members freeze product at sea and deliver to cold storage or freezer containers for barging



Landed Value Update: 2021-22 to 2022-23

- Landings increased from 298,755 lbs. to 329,095, a 10.16% increase
- Price increased from \$11.06/lb. to \$13.56/ lb., a 22.6% increase
- Value increased from \$3.304 million to \$4.462 million, a 35.05% increase
- Two cooperative vessels fished in 2022-23
- Potential crew share (assumes 24 total positions, and 42% of total revenue) increased from \$57,824 to \$78,094



Port Landings 2019-2023

Port	Season			
	2019/20	2020/21	2021/22	2022/23
Dutch Harbor	1			1
Homer	1			
Kodiak	5	5	8	10
Yakutat	3	2	2	3
Seattle		1		
Unknown				1
Total	10	8	10	15

Source: ADFG Kodiak Scallop Program Office 2023



Revisions to be done in next full SAFE

- Port of landings data (# of landings by port) has been compiled by ADF&G back to 1990.
- A comparative analysis of this data will be developed to show changes in community participation over time.
- An updated ownership chart with verified shares will be provided.
- Dramatic changes in import markets have occurred in recent years. An updated import market assessment will be provided.
- The relative performance, volume, and value of the Atlantic sea scallop fishery will be provided.



Questions?

