



NOAA
FISHERIES

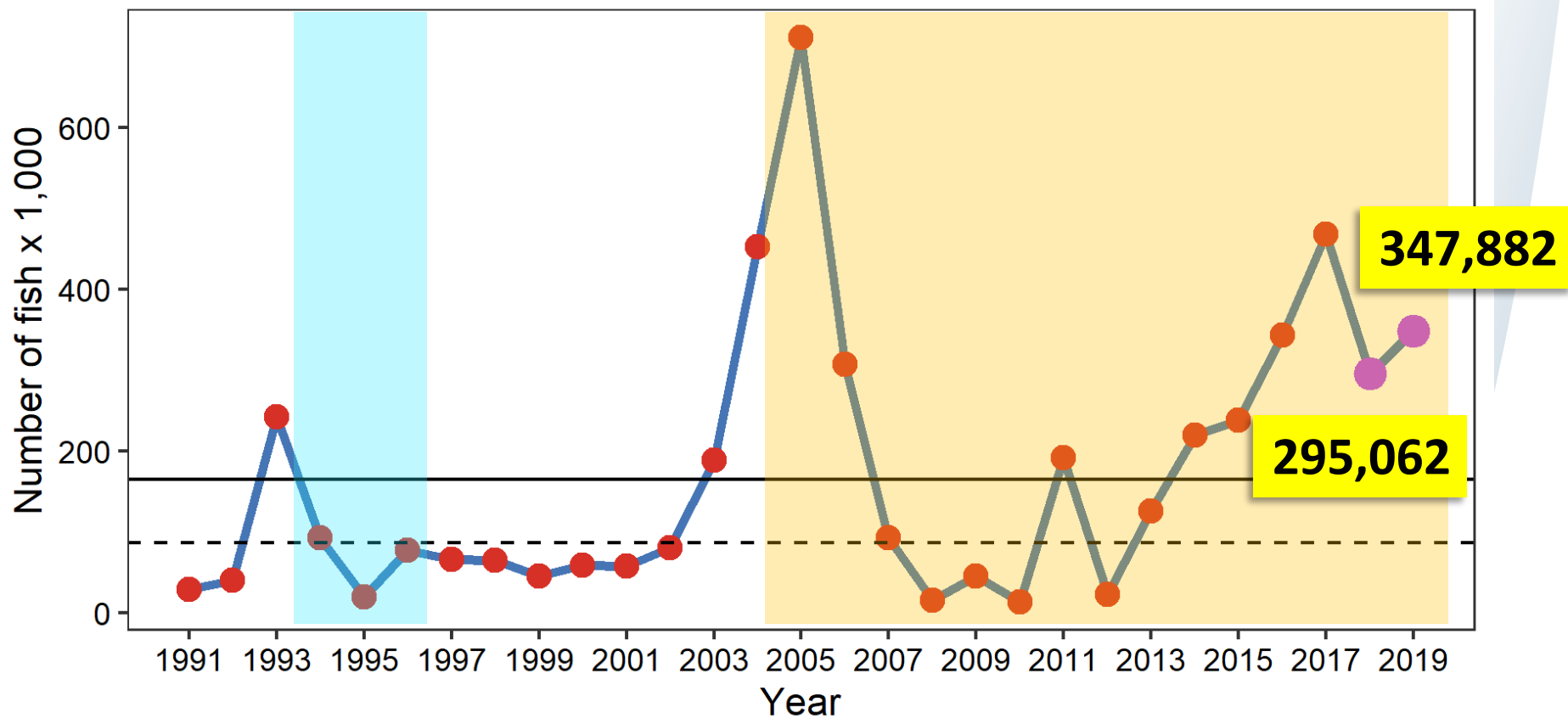
Genetic stock composition analysis of chum salmon from the prohibited species catch of the 2018-2019 Bering Sea walleye pollock trawl fishery and Gulf of Alaska groundfish fisheries

C. Kondzela, P. Barry, J. Whittle, J. Watson, E. Yasumiishi, and W. Larson

Auke Bay Laboratories
Juneau, Alaska

NPFMC meeting
April 2021
Virtual

Bering Sea chum salmon bycatch



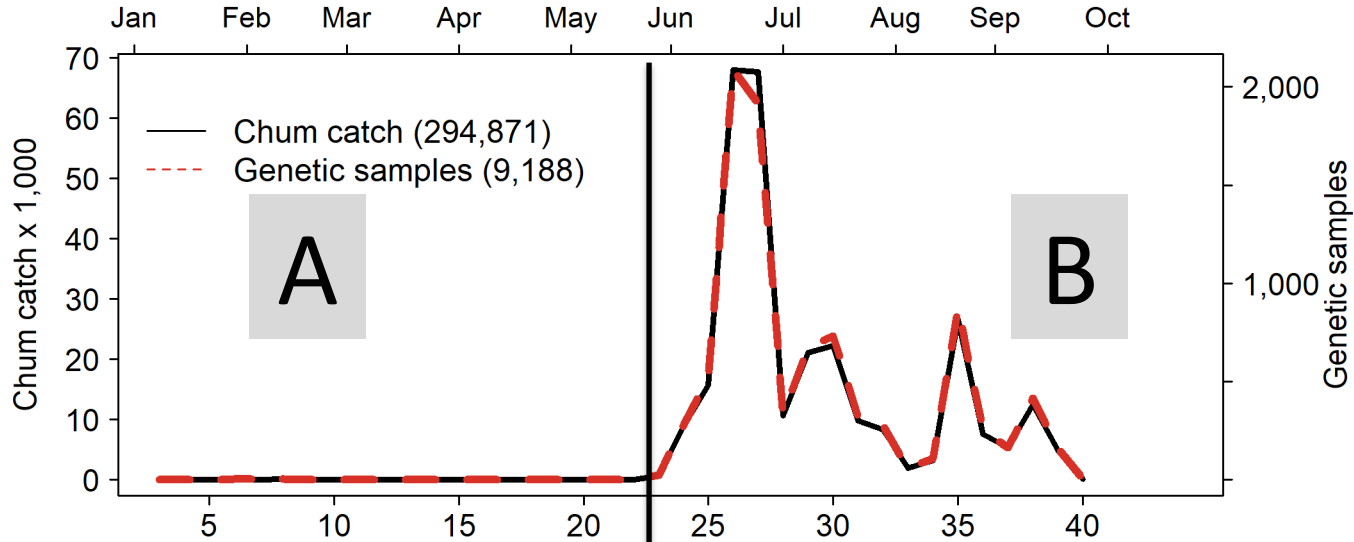
1994: Scales
1994 – 1996: Allozymes

2005 – 2019: Microsatellites

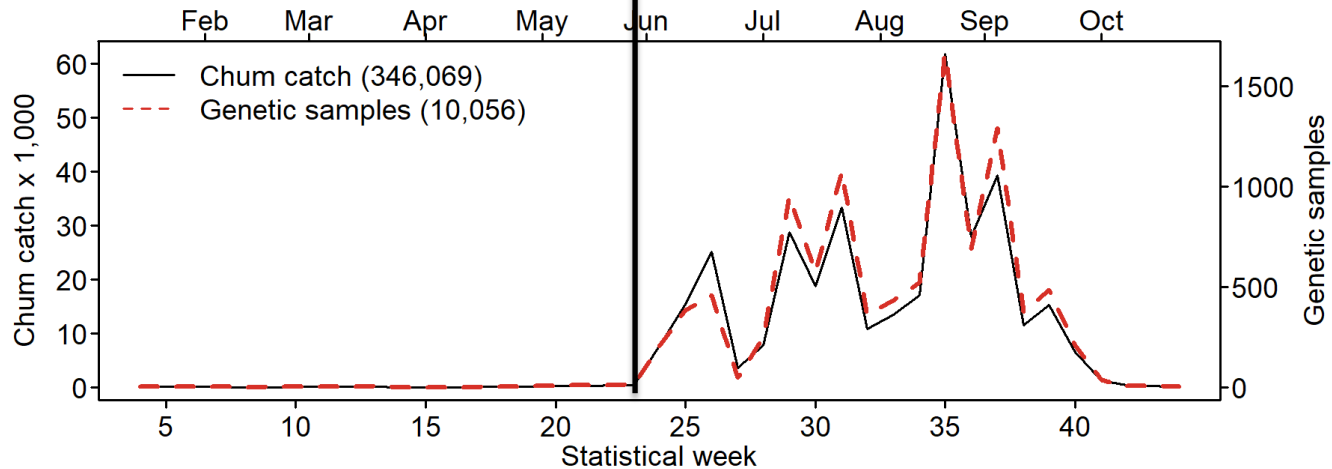


Bering Sea chum salmon bycatch

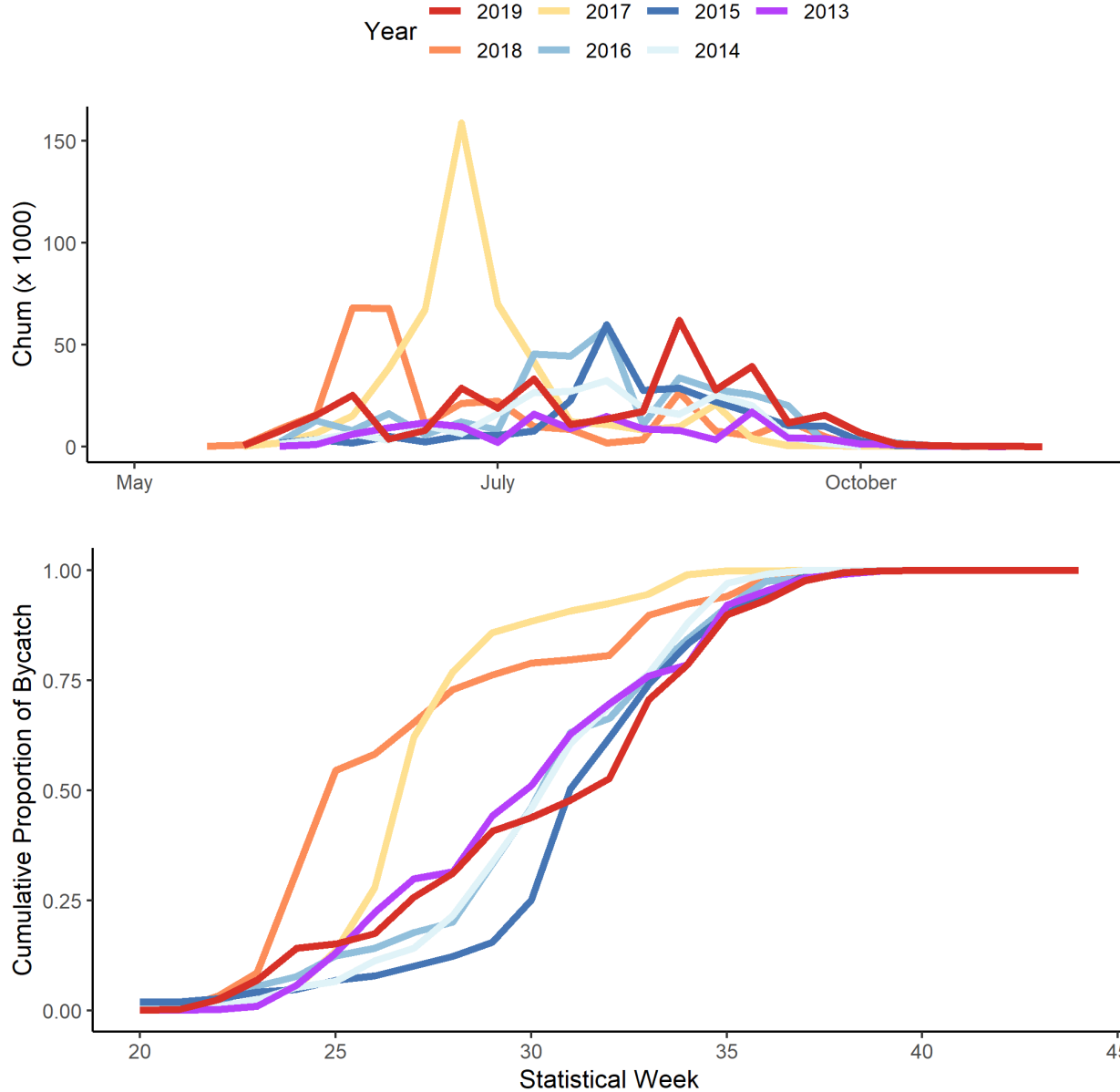
2018



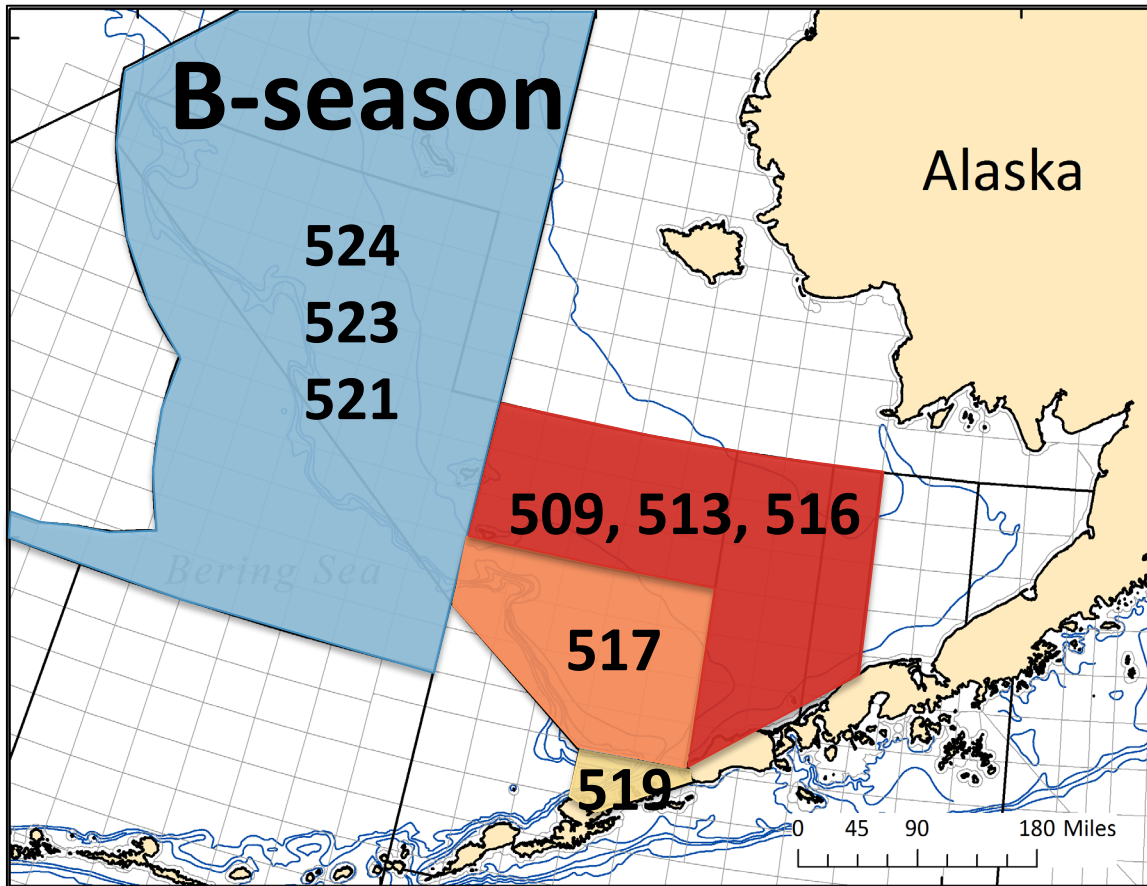
2019



Bering Sea chum salmon bycatch

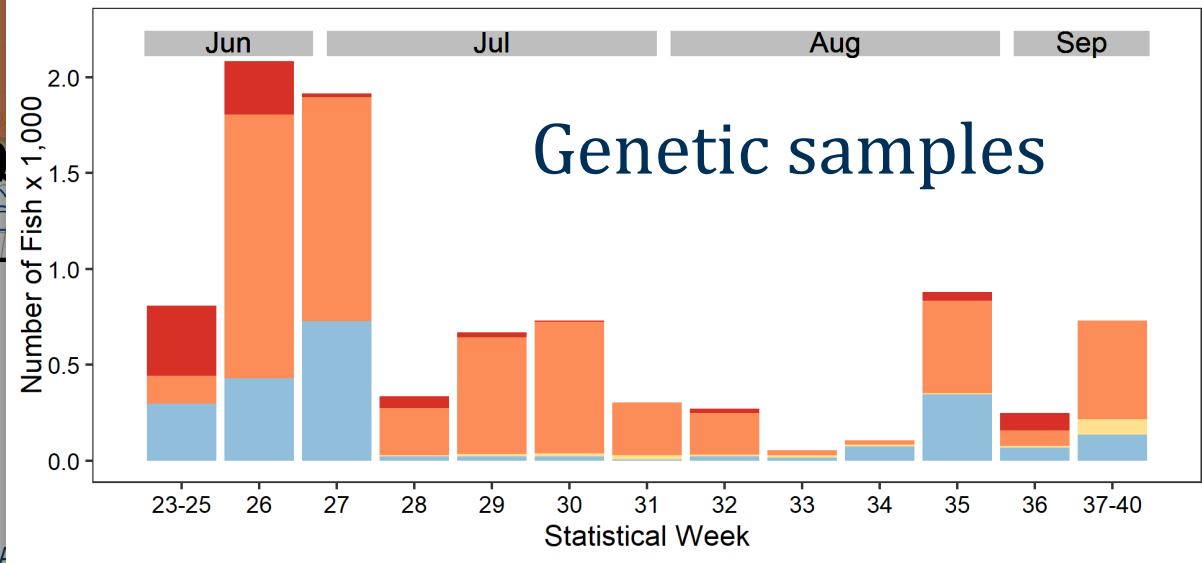
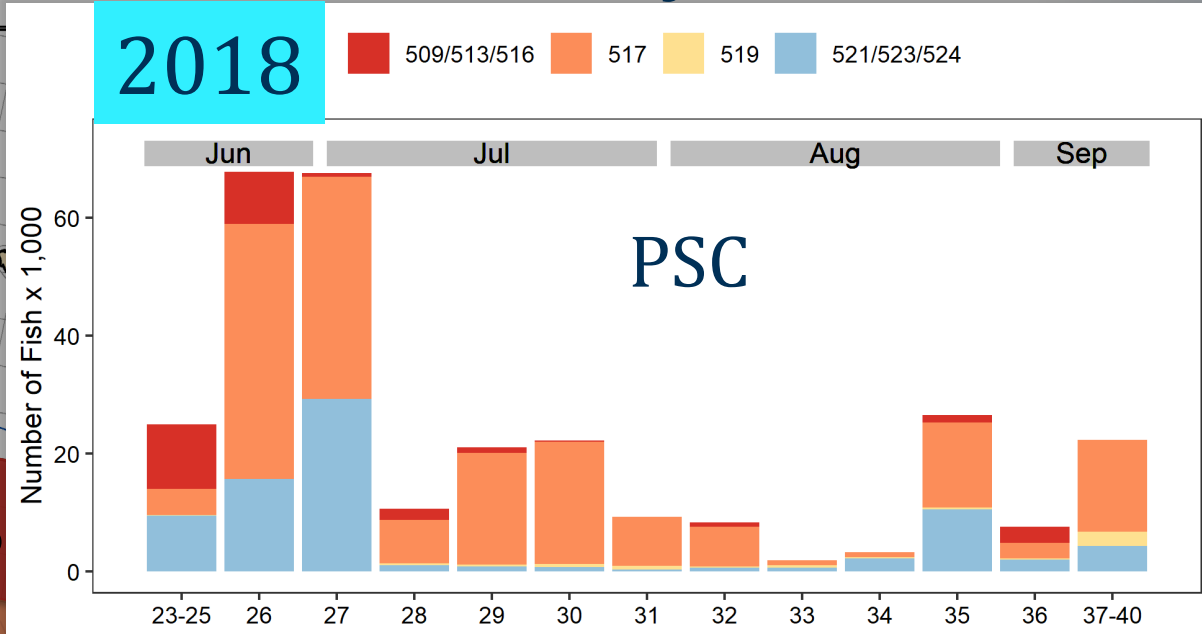
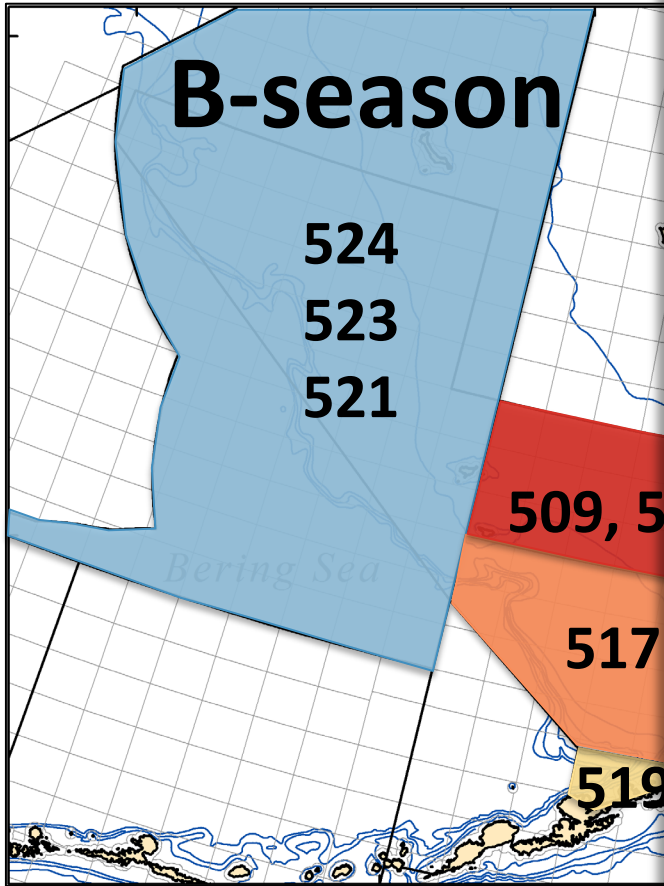


Bering Sea chum salmon bycatch

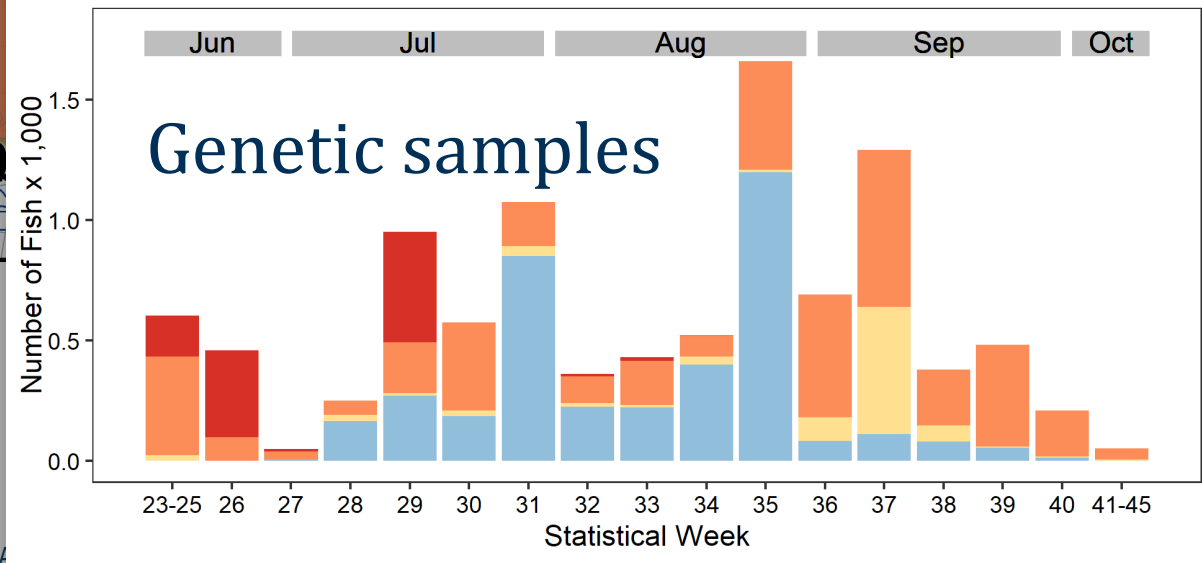
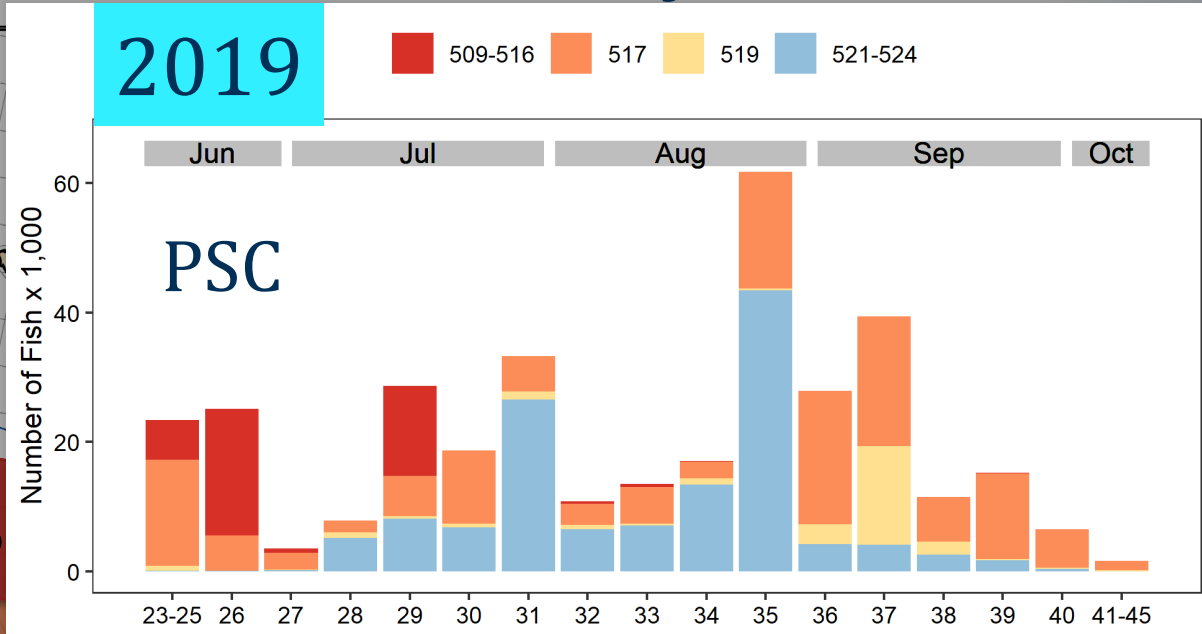
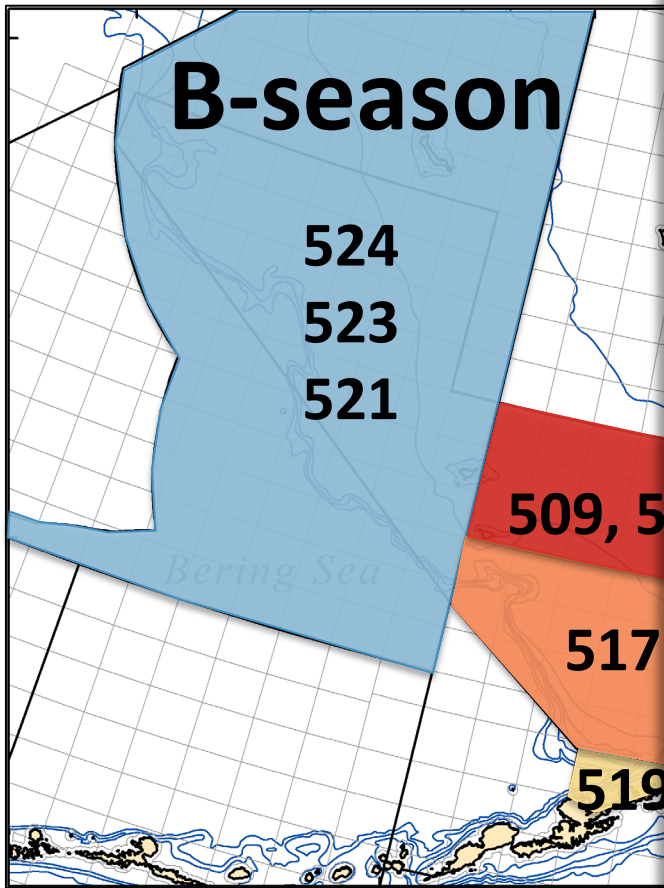


NOAA
FISHERIES

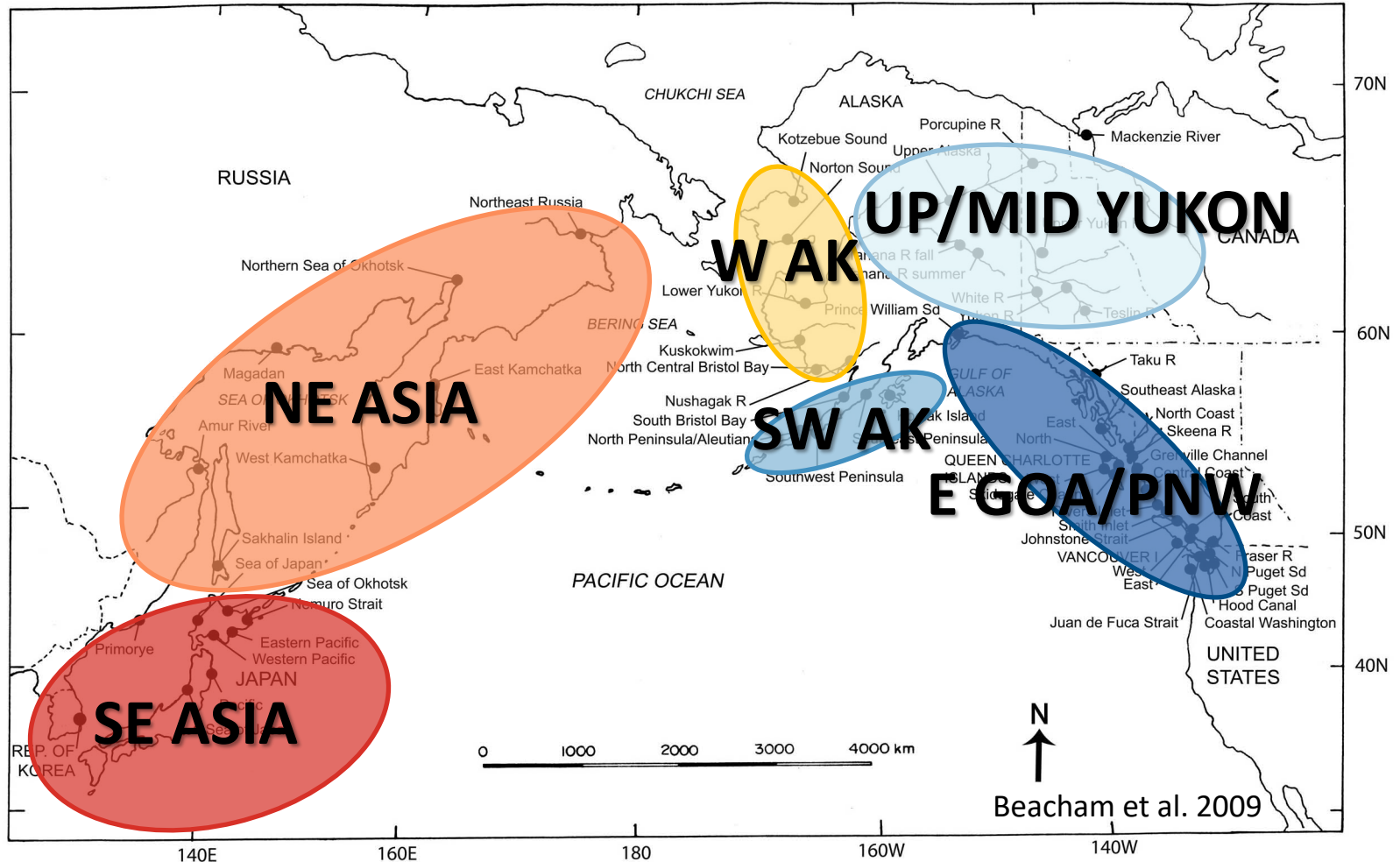
Bering Sea chum salmon bycatch



Bering Sea chum salmon bycatch

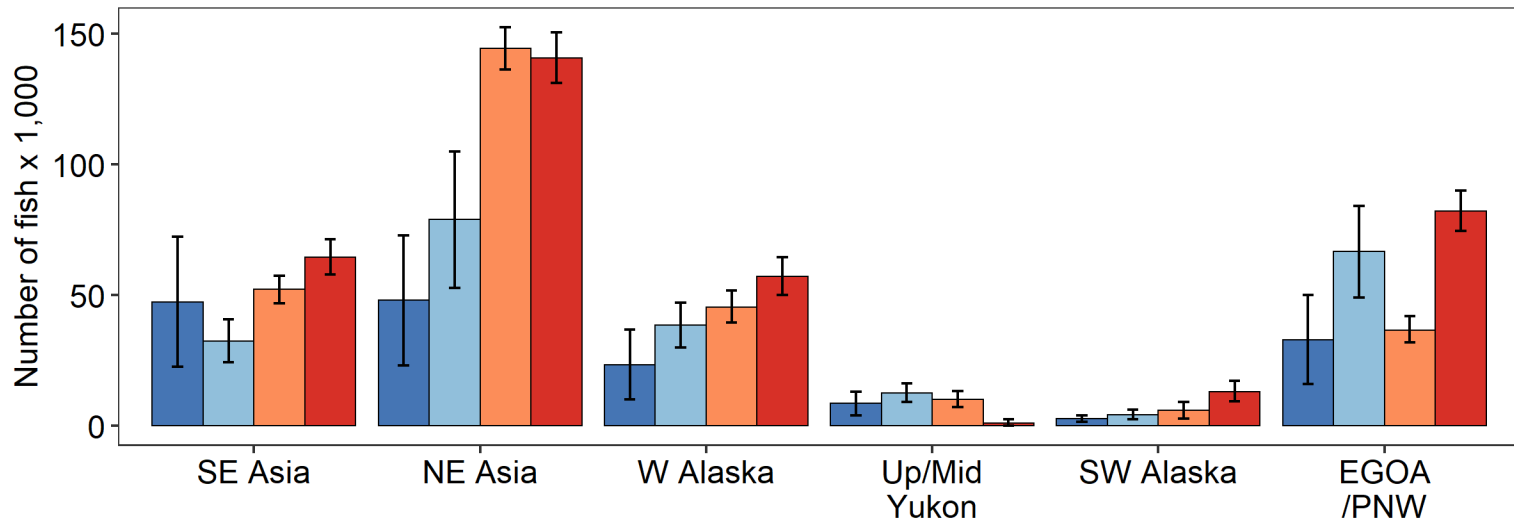
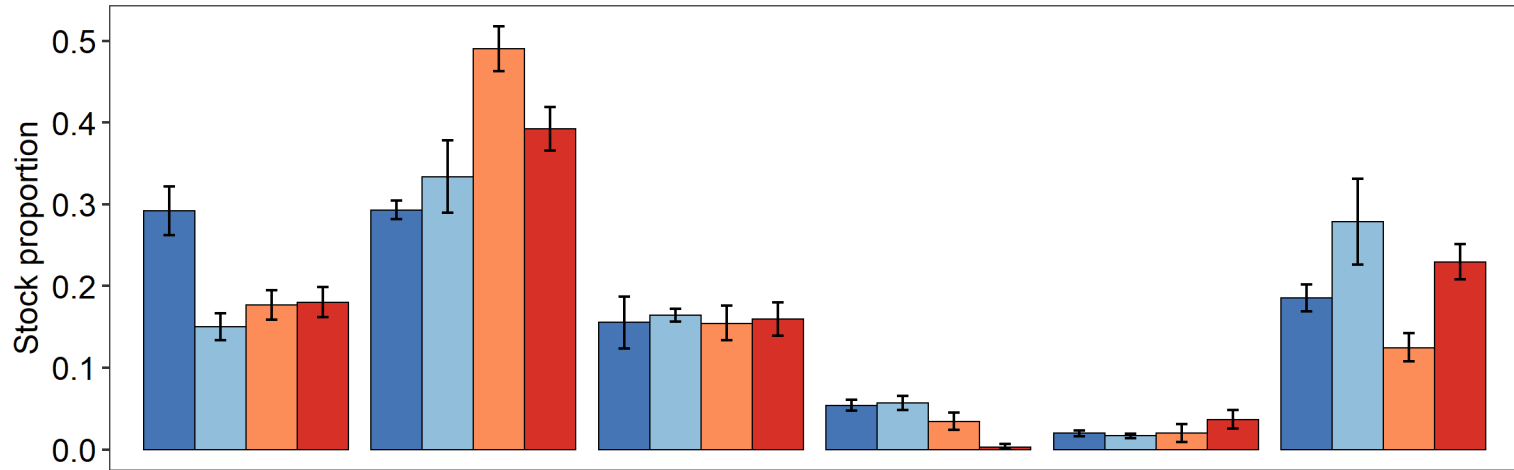


Chum salmon stock groupings

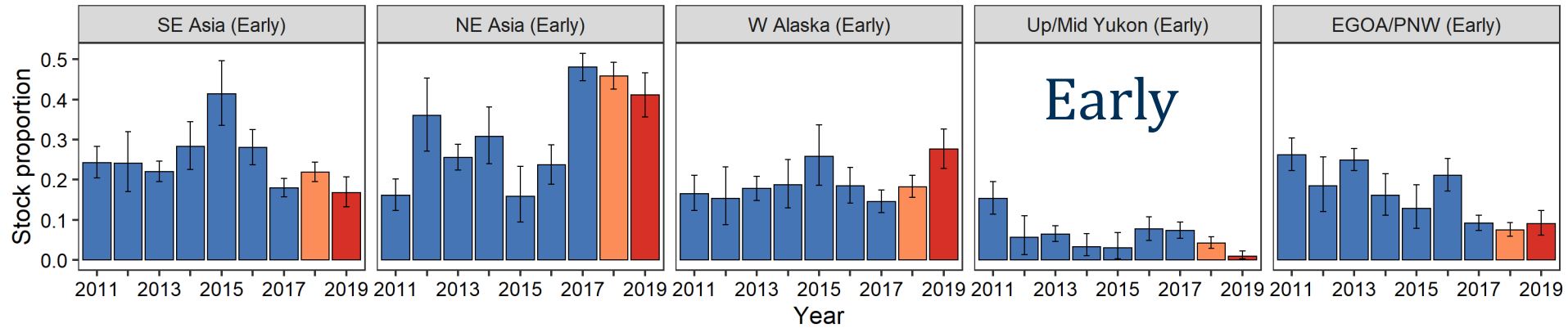


Bering Sea chum salmon bycatch

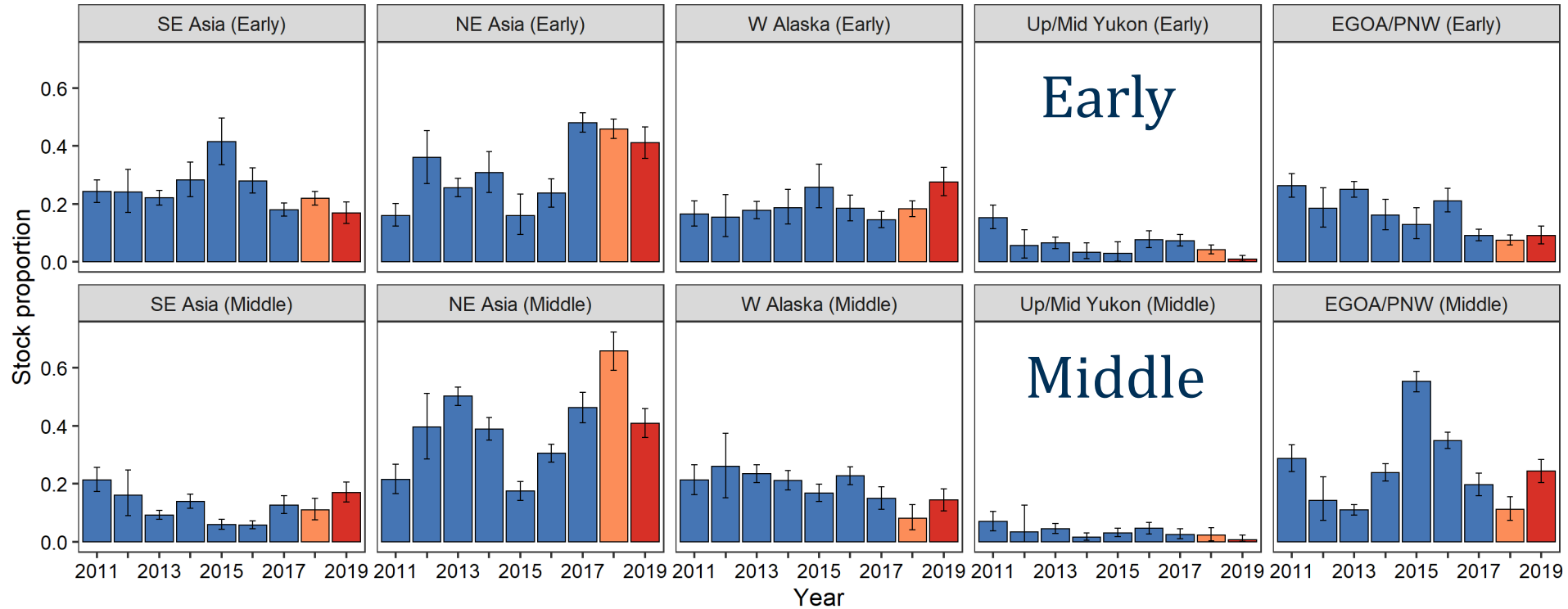
■ mean 1994, 1995, 2005-2010
 ■ mean 2011-2017
 ■ 2018
 ■ 2019



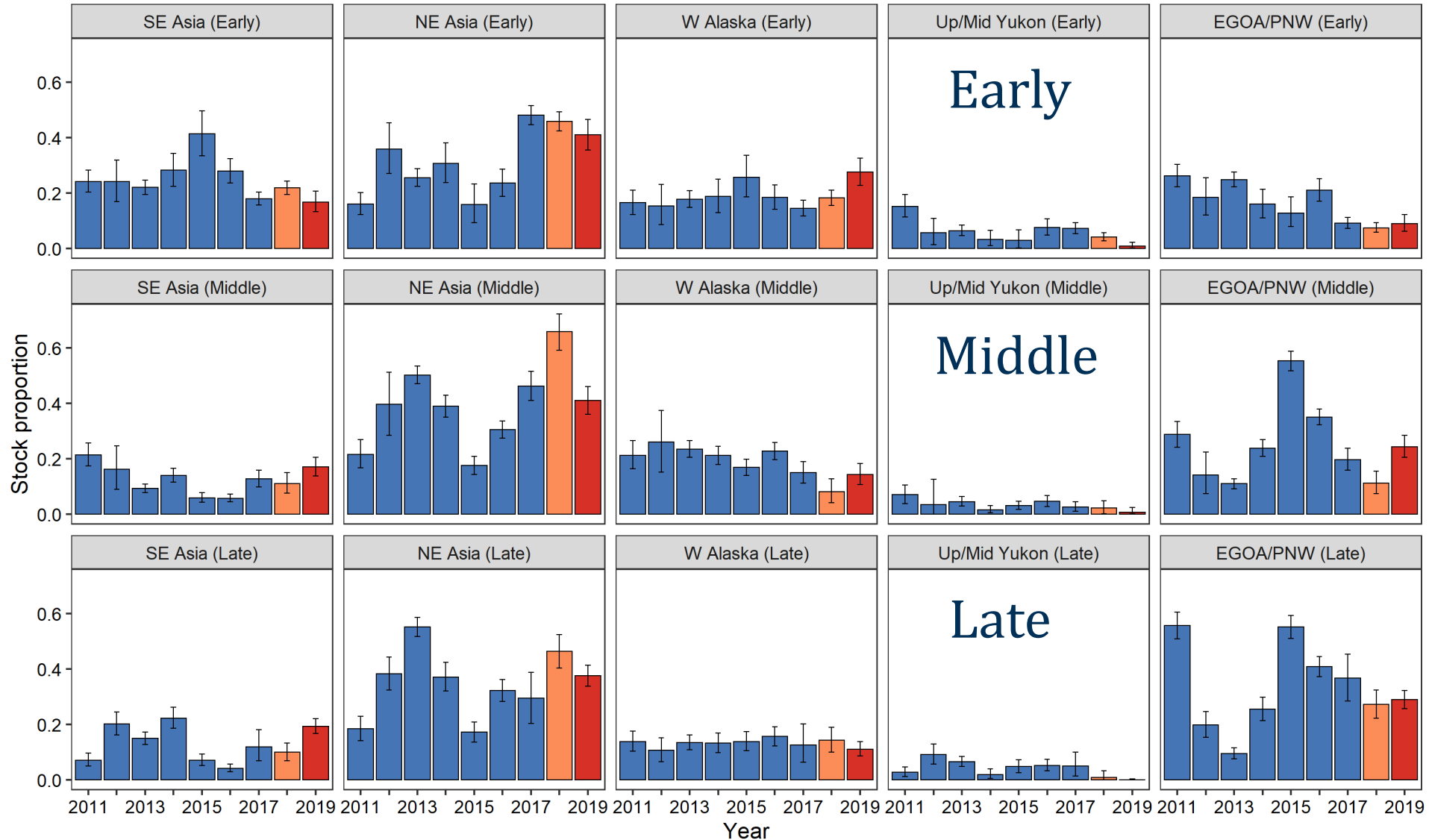
Bering Sea chum salmon bycatch



Bering Sea chum salmon bycatch



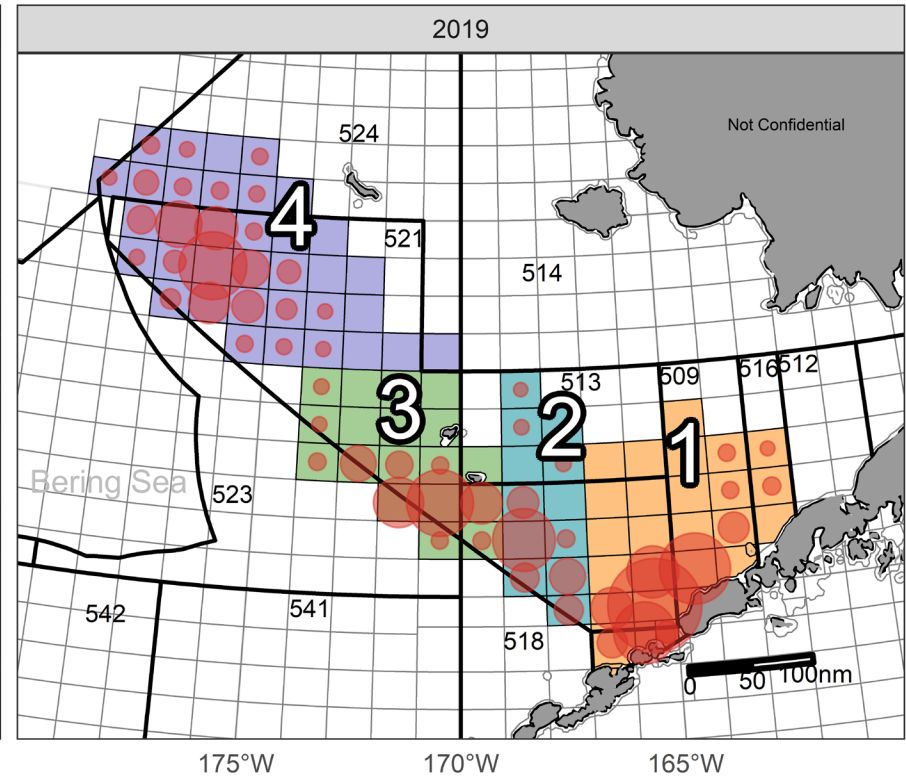
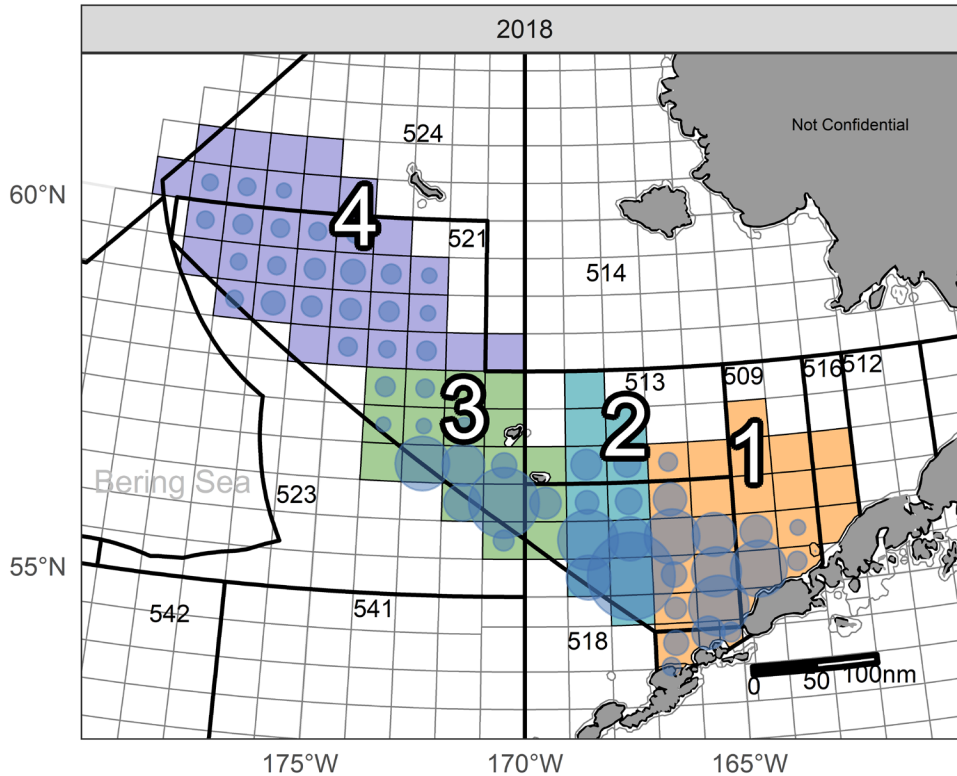
Bering Sea chum salmon bycatch



Bering Sea chum salmon bycatch

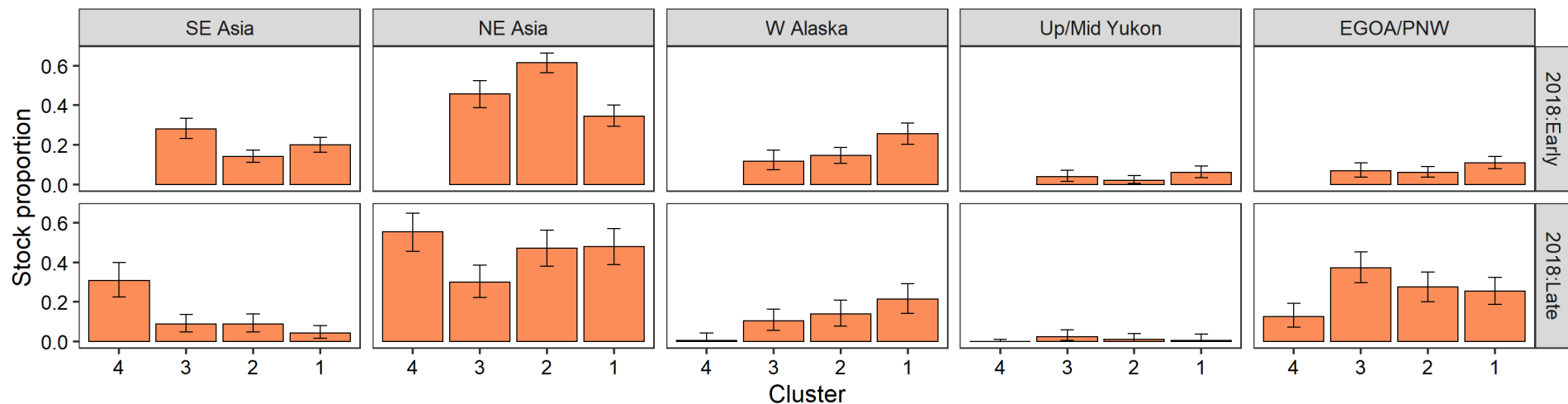
2018

2019



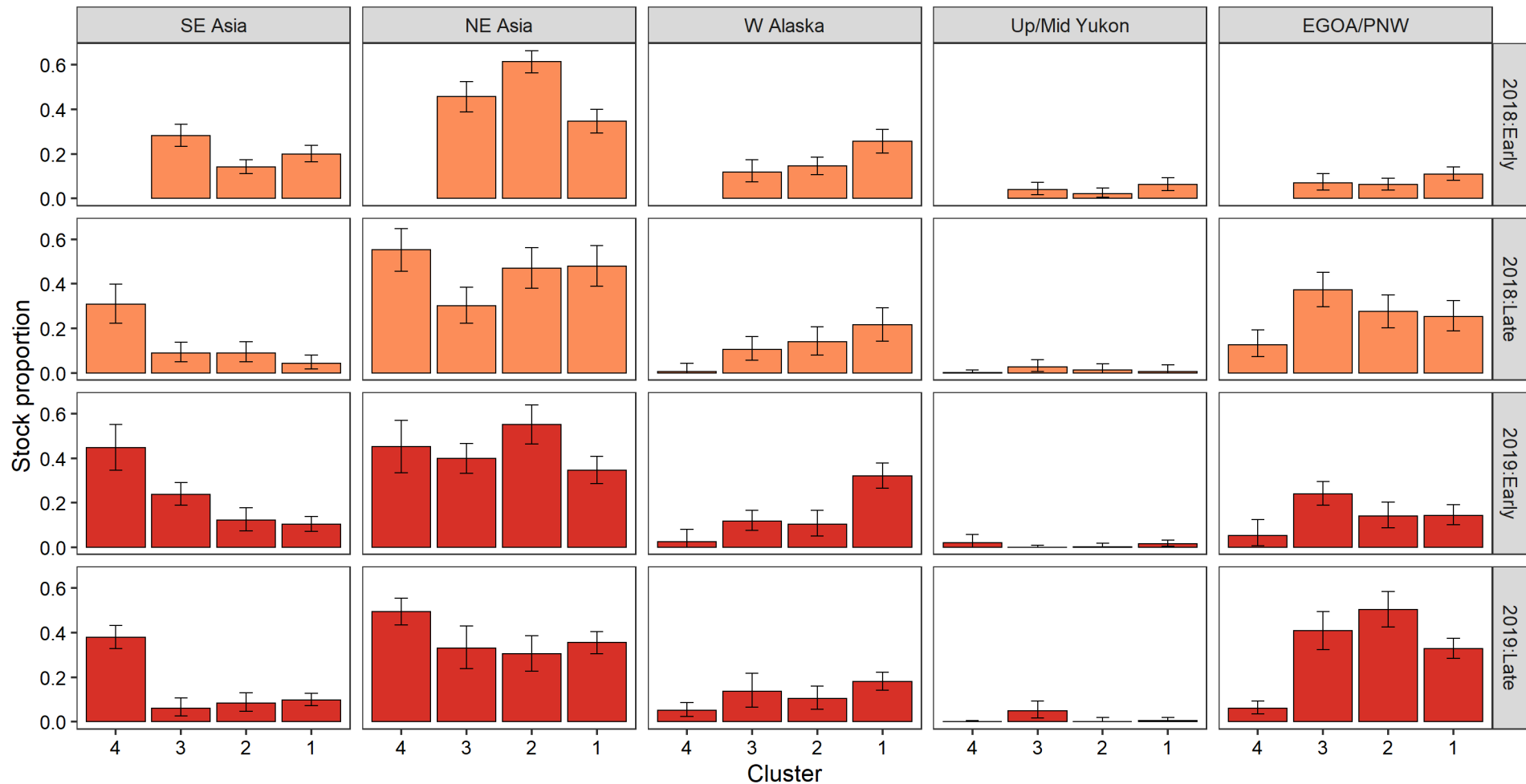
Bering Sea chum salmon bycatch

2018 ■

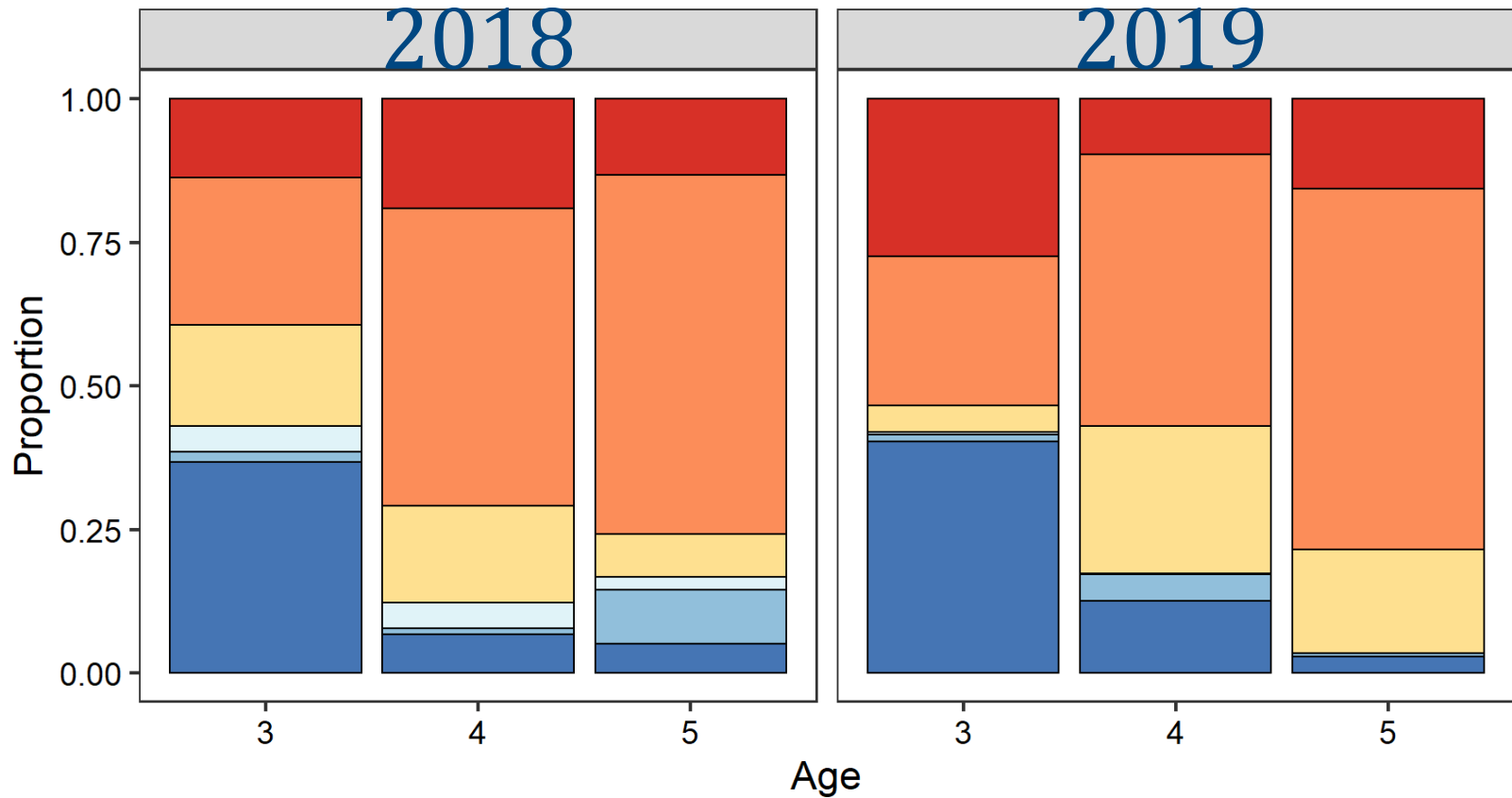
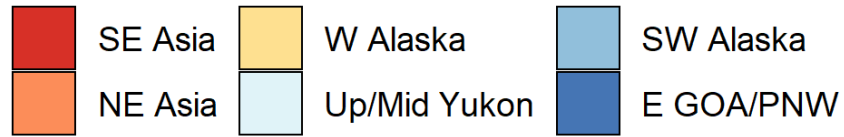


Bering Sea chum salmon bycatch

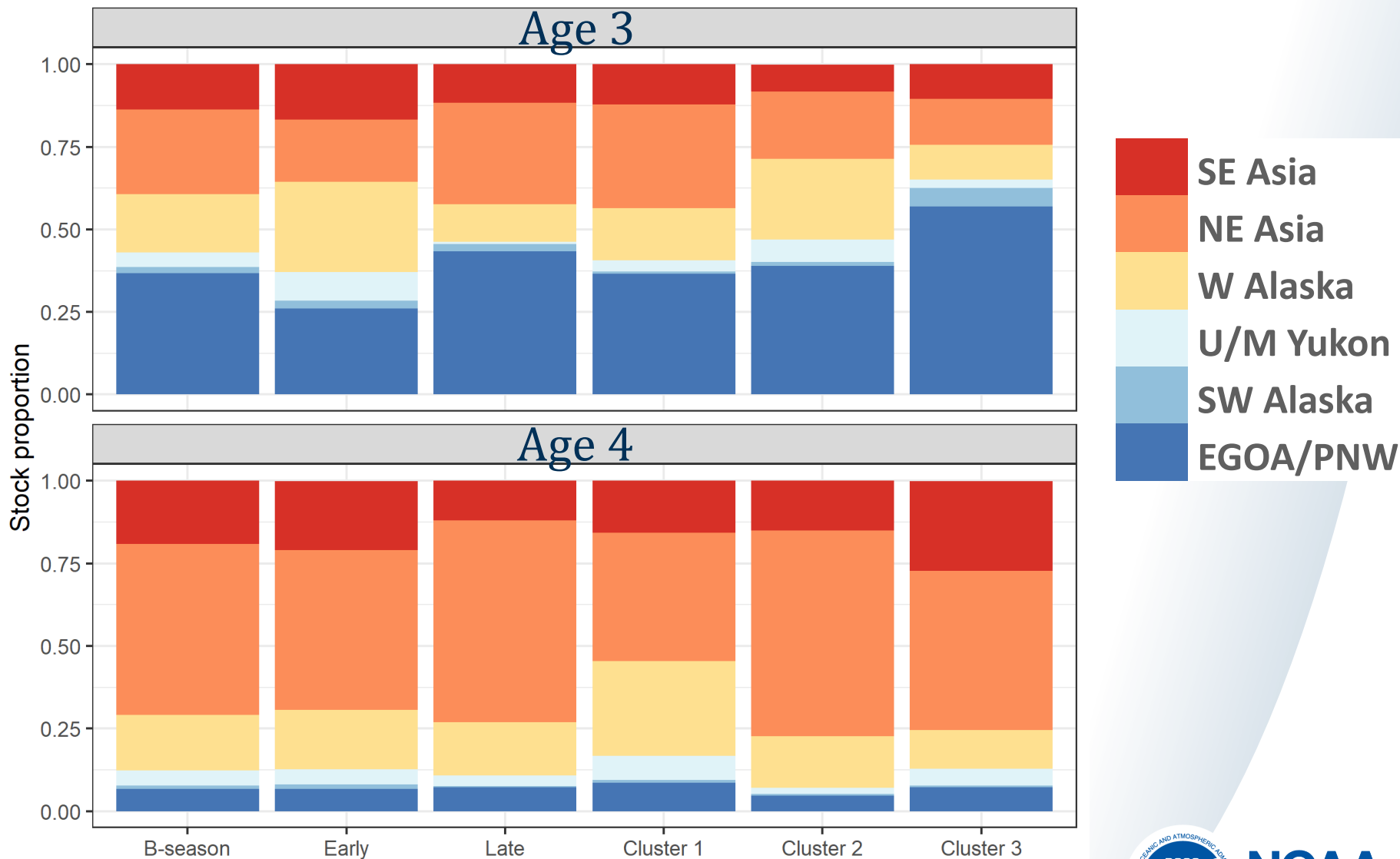
2018 ■ 2019 ■



Bering Sea chum salmon bycatch



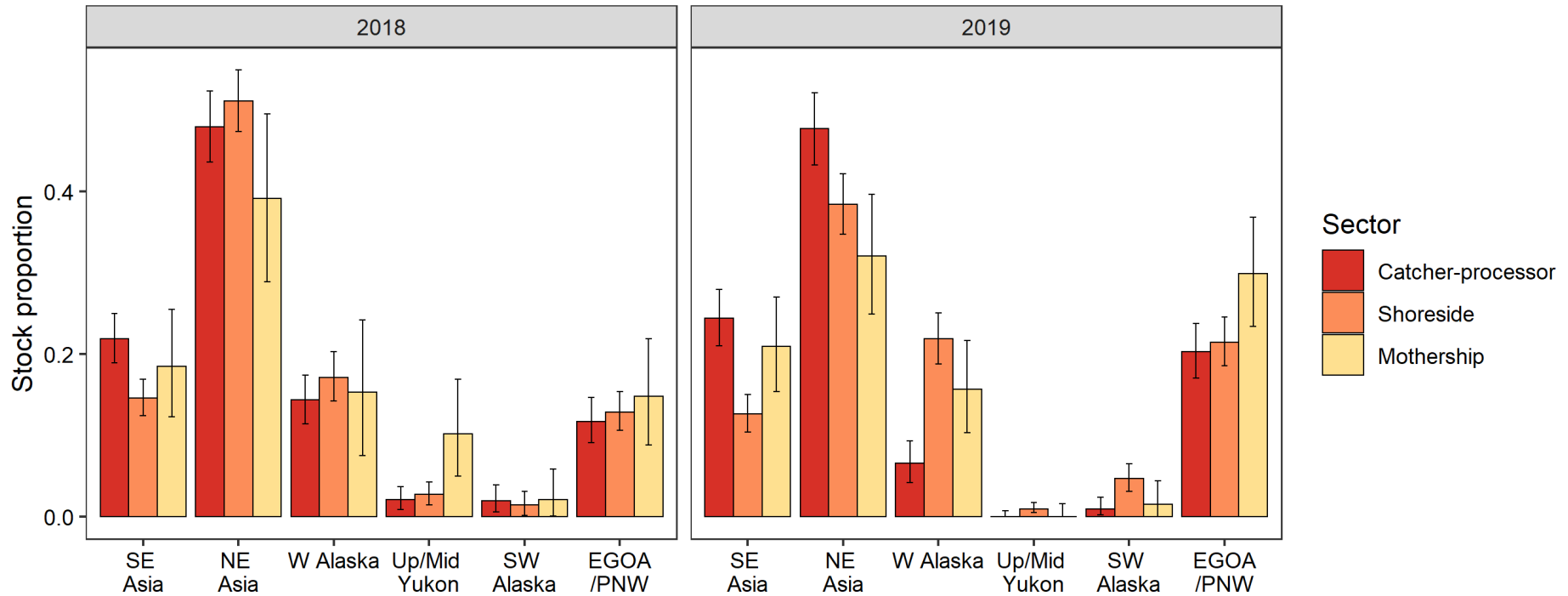
2018 Bering Sea chum salmon bycatch



Bering Sea chum salmon bycatch

2018

2019



Sector

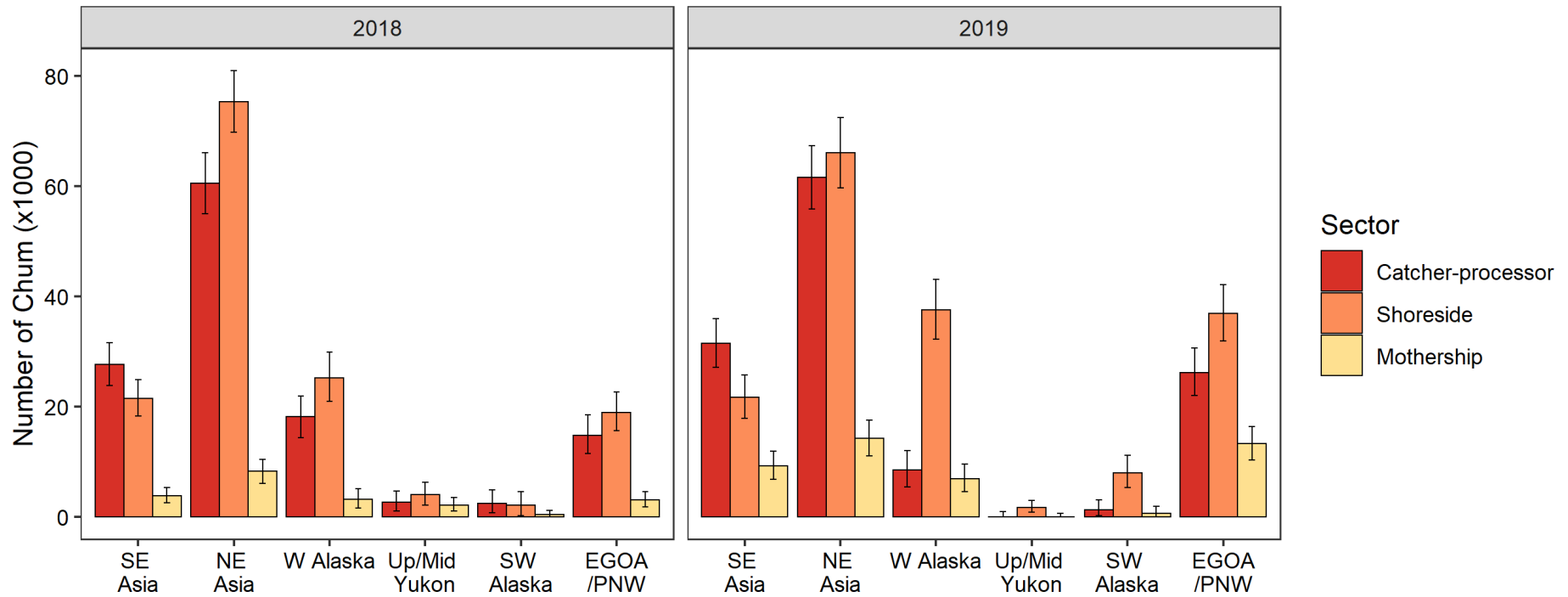
- Catcher-processor
- Shoreside
- Mothership



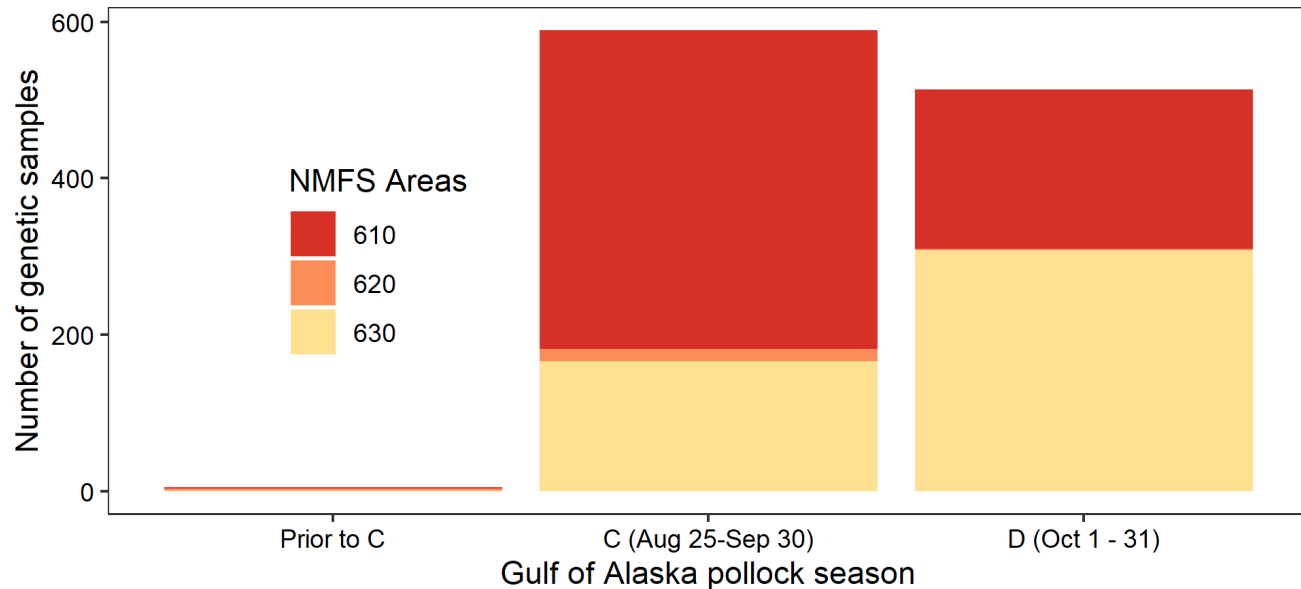
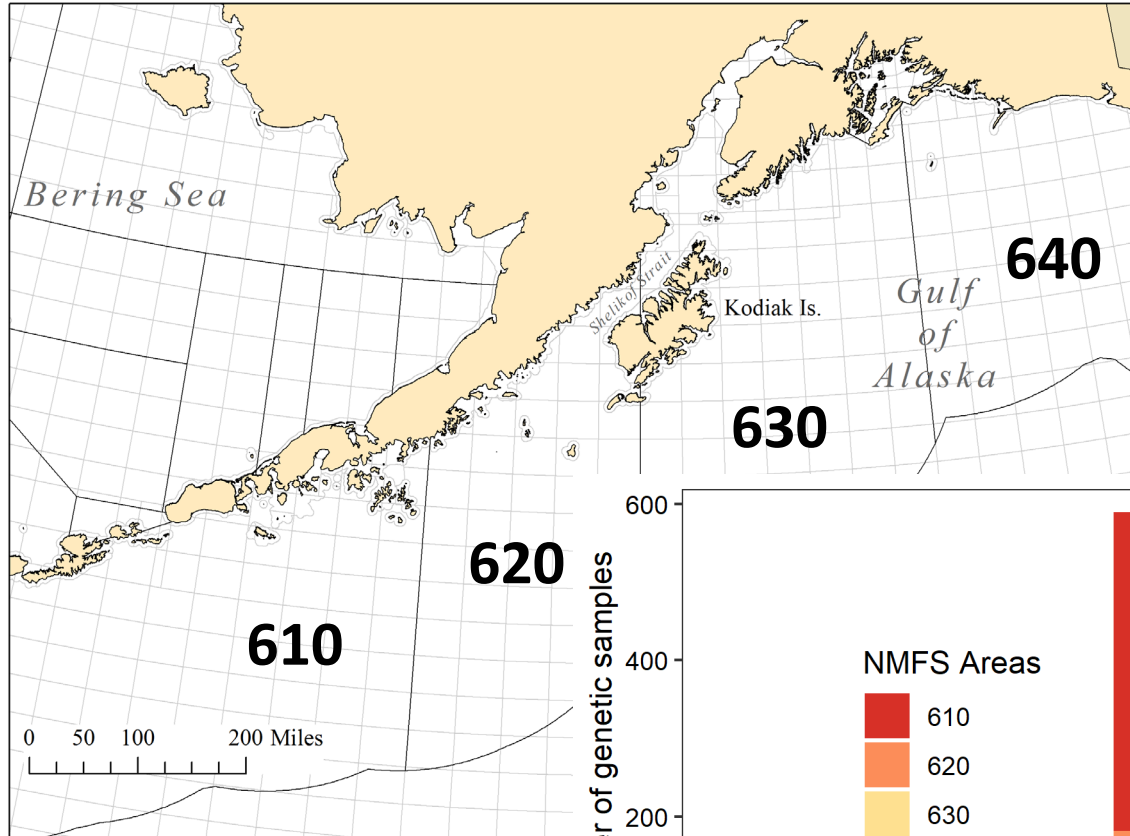
Bering Sea chum salmon bycatch

2018

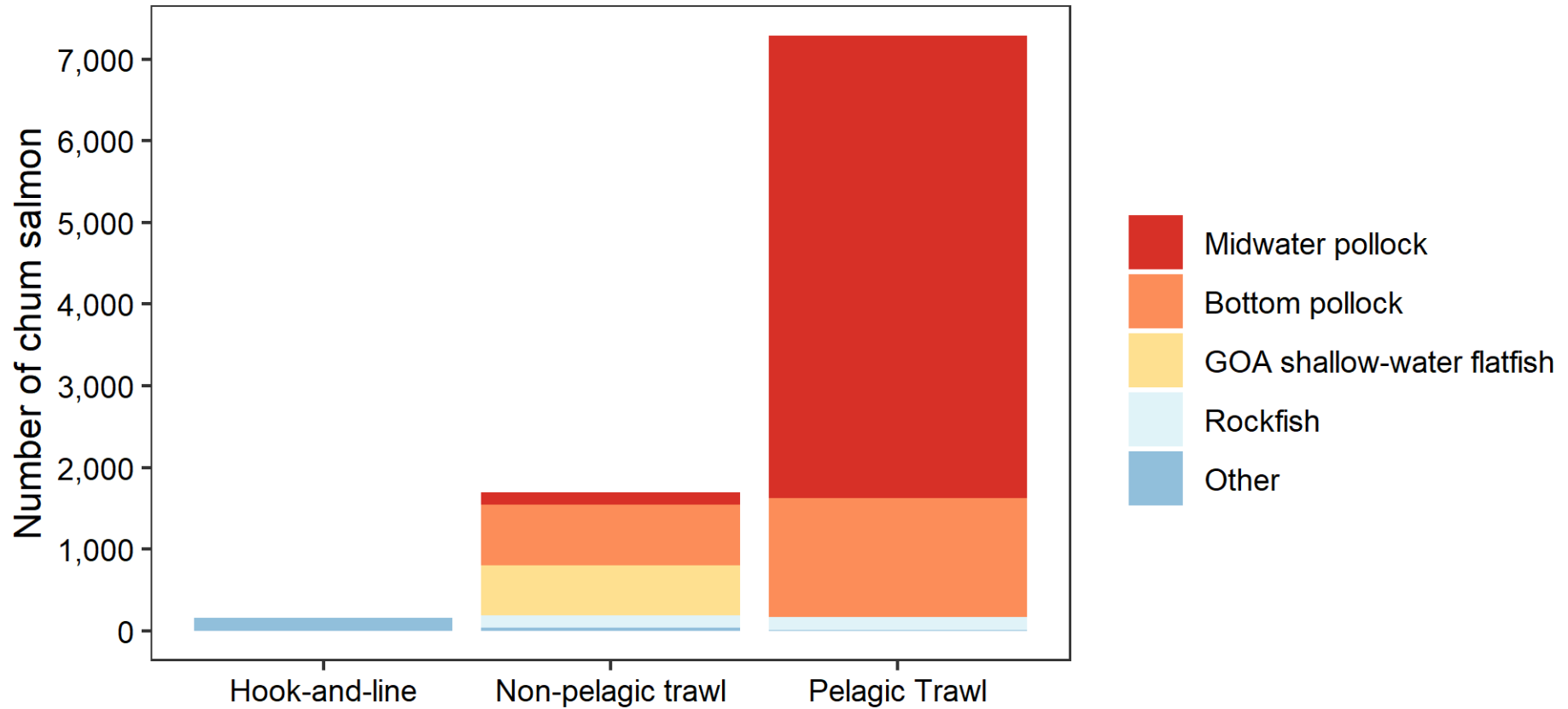
2019



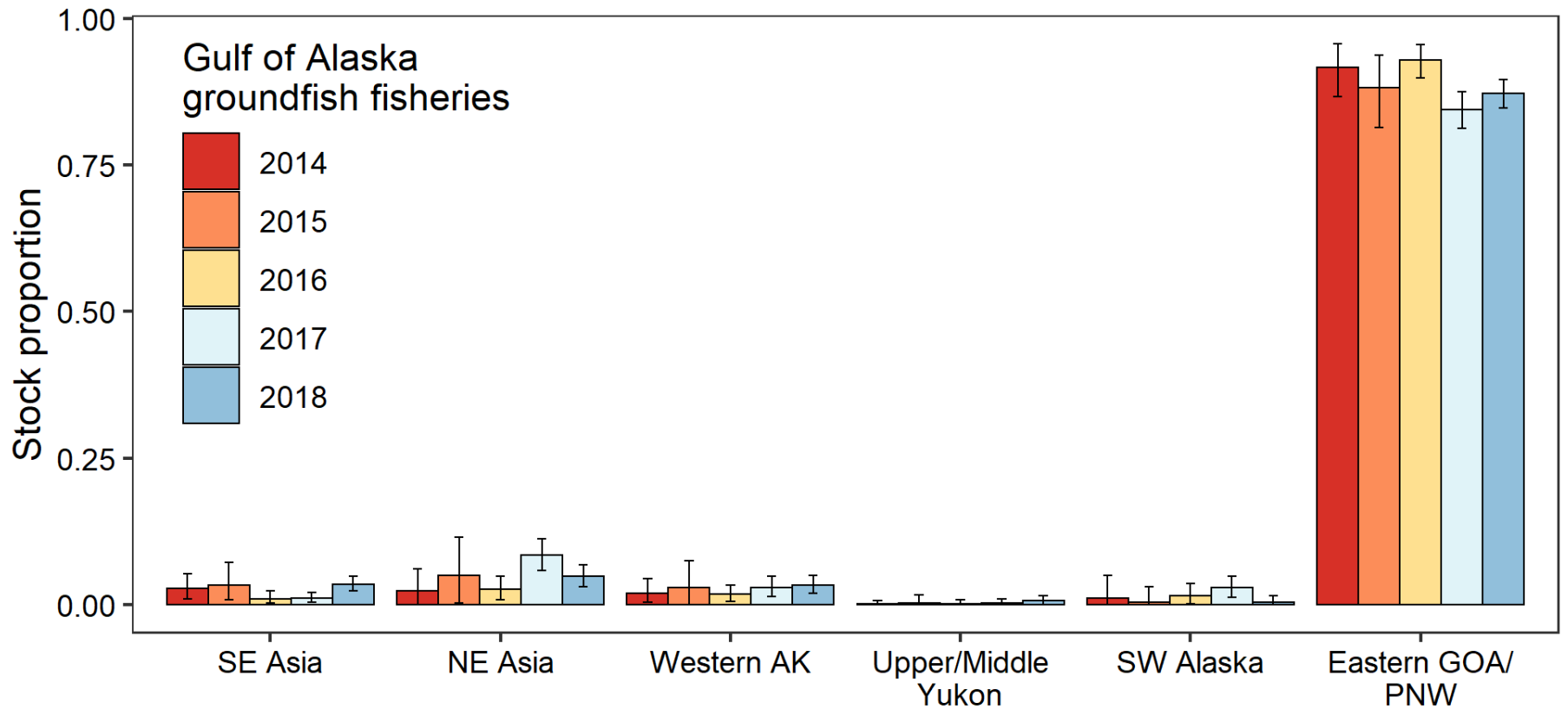
2018 GOA chum salmon bycatch



2018 GOA chum salmon bycatch

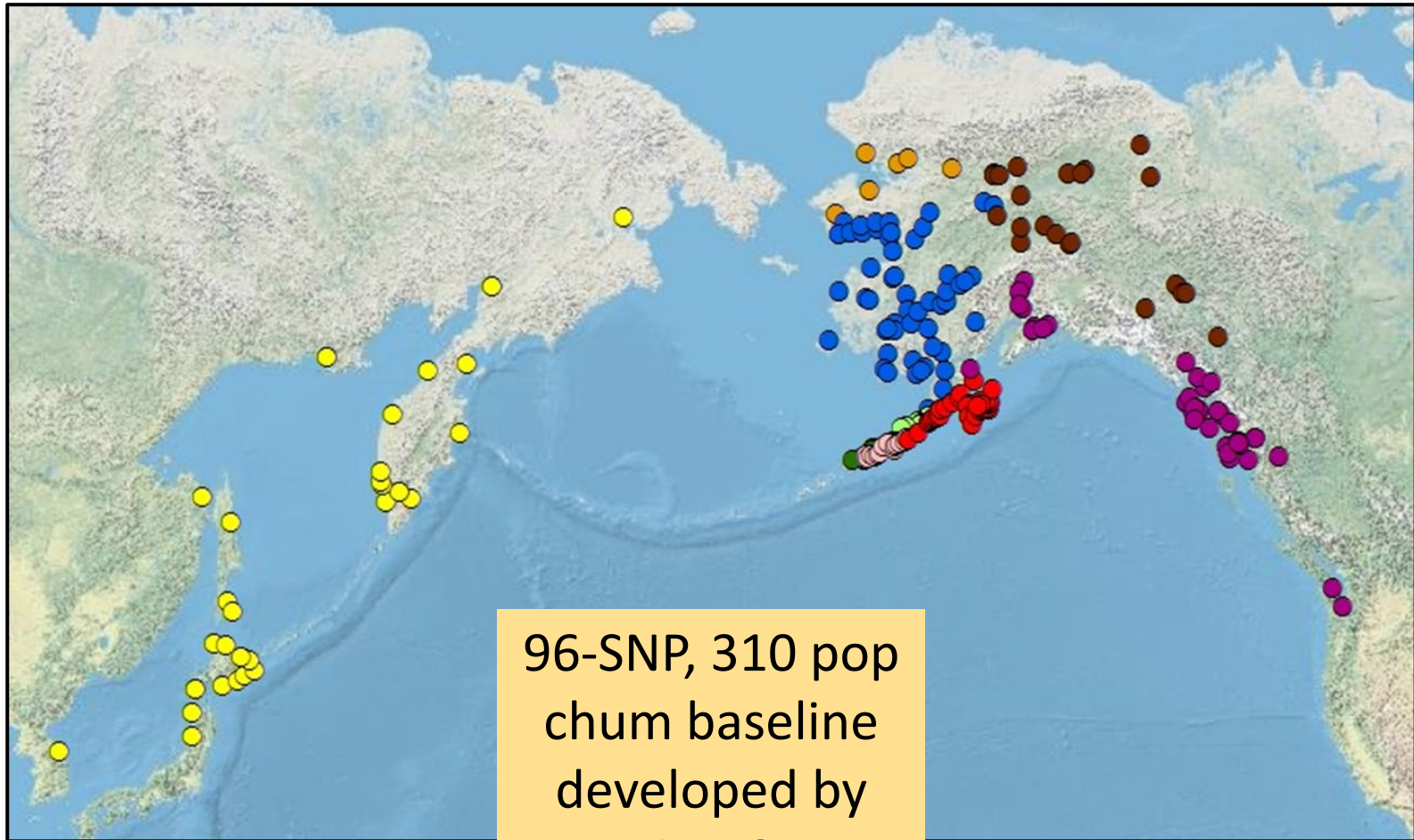


GOA chum salmon bycatch



2020 Bycatch

- 11 Microsatellites  91 SNPs (GTseq)



Next steps

- 10 years of systematic sampling, genetic and age analyses behind us.
- New technologies, staff, PCCRC post-doc – well-positioned to analyze trends.
- Over the next year, concerted effort to integrate:
 - ✓ spatial and temporal distributions of bycatch
 - ✓ genetics and age
 - ✓ fishing fleets/sectors
 - ✓ environmental information
- Improve stock-specific bycatch avoidance.





Bering Sea chum salmon bycatch

