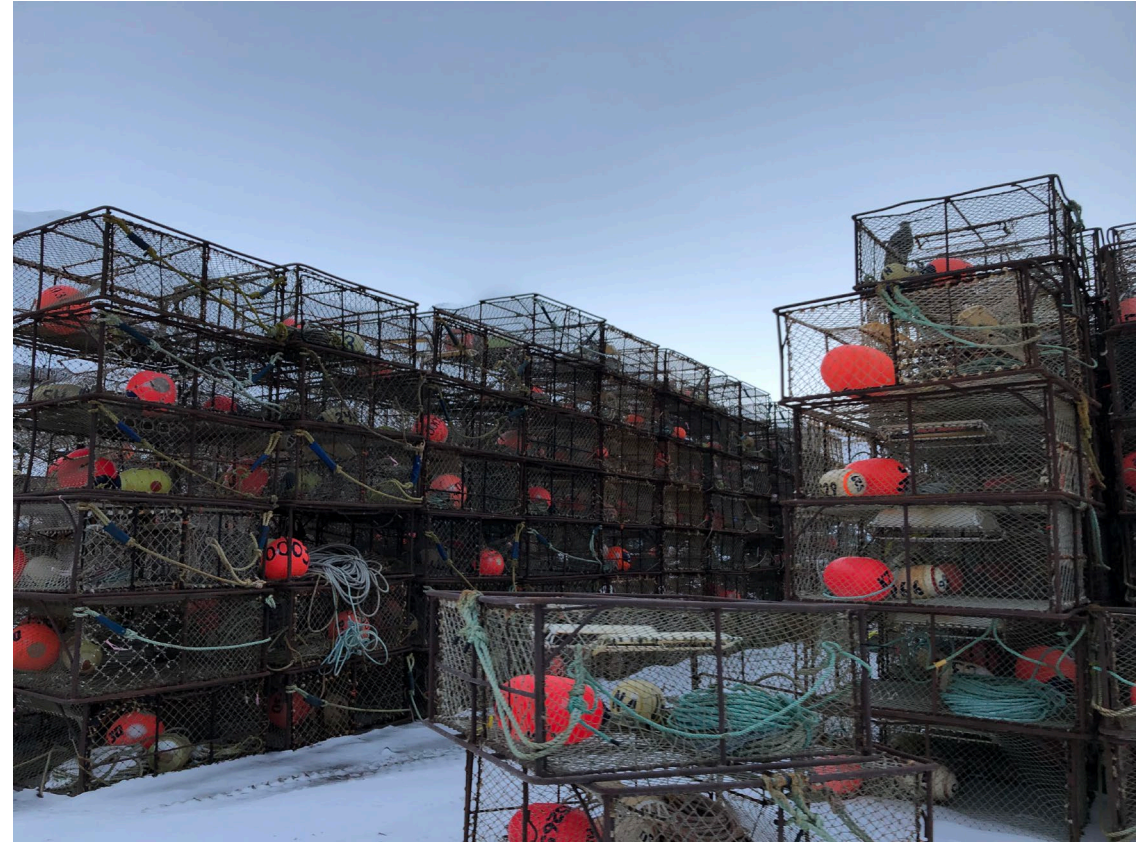


Clarification on Crab Crew Share Active Participation Action

An initial review analysis is scheduled for June: considers temporary changes to Crab Crew share (“C share”) requirements

A memo was produced for this meeting (attached under agenda E)

- Staff are seeking clarification on the Council’s focus for its purpose and need statement
- Highlighting challenges with the timeline



C Share Active Participation Requirements

In order to **receive an annual allocation** of C share IFQ:

- Participate as crew in at least 1 delivery in a CR Program fishery in the **3** years preceding, or
- the individual was an initial recipient of C shares, they could also participate as crew in at least 30 days of fishing in a commercial fishery managed by the State of AK or a US commercial fishery in federal waters off Alaska in the **3** years preceding



C Share Active Participation Requirements

In order to **retain** C share QS:

- Participate as crew in at least 1 delivery in a CR Program fishery in the **4** years preceding, or
 - the individual was an initial recipient of C shares, they could also participate as crew in at least 30 days of fishing in a commercial fishery managed by the State of AK or a US commercial fishery in federal waters off Alaska in the **4** years preceding
- There are narrow exemptions for closed fisheries – only apply if C share holder doesn't also have C share IFQ in a fishery that is open



In June 2022, the Council requested an **emergency rule** to temporarily suspend C share active participation requirements for the 2022/23 season.

- The Secretary agreed and no C shares were withheld or revoked during that application period. C share holders had another year to make up participation if possible or divest QS.

Also in June 2022, the Council took action to initiate an analysis

- Purpose and need mentions both challenges of getting out on vessel due to the pandemic and decline of the Bering Sea snow crab stock
- Alternative 2: Modify the CVC QS and CPC QS recency requirements

Option 1: Restart the recent participation requirement beginning in 2023/24 fishing year. **Do not count 2019/20, 2020/21, 2021/22** towards the recent participation requirement.

Option 2: Give the Regional Administer the authority to suspend the CVC QS and CPC QS recent participation requirements.



Example situations

Beginning July 1, 2018 RAM may withhold IFQ	"COVID year"	"COVID year"	"COVID year"	Emergency rule- no IFQ withheld no QS revoked
	Beginning July 1, 2019 RAM may revoke QS		no BBRKC	no BBRKC
				no opilio

Seasons from July 1 - June 30:	2015/2016	2016/17	2017/18	2018/19	2019/20	2020/21	2021/22	2022/23	2023/24	2024/25	2025/26
Example 1	A	A	0	A	0	0	0	0	QS revoked		
Example 2	A	A	A	A	0	0	0	0	IFQ withheld; 0	QS revoked	
Example 3	0	0	A	A	0	0	A	0	0		

A = active participation requirement met, 0 = active participation requirement not met



NMFS Administration of C Share Participation Requirements

- 2015 – Amendment 31 effective
- 2018 and 2019 – provisions became constraining
- Annual Application due June 15
- Documentation of participation not submitted each year
- Inconsistencies in administrative procedures from 2018 through 2022
- In that time period, IFQ was correctly withheld on specific occasions, no QS revocations
- Few CR Program participants should have had their crew shares annual IFQ withheld or QS revoked in a past crab fishing year
- We have revised our procedures and are conducting a thorough review for 23/24 crab fishing year
- **REQUEST: All C share holders submit documentation of recent participation for the upcoming 2023/24 crab fishing year due June 15, 2023.**



Does the Council still perceive a need for action?

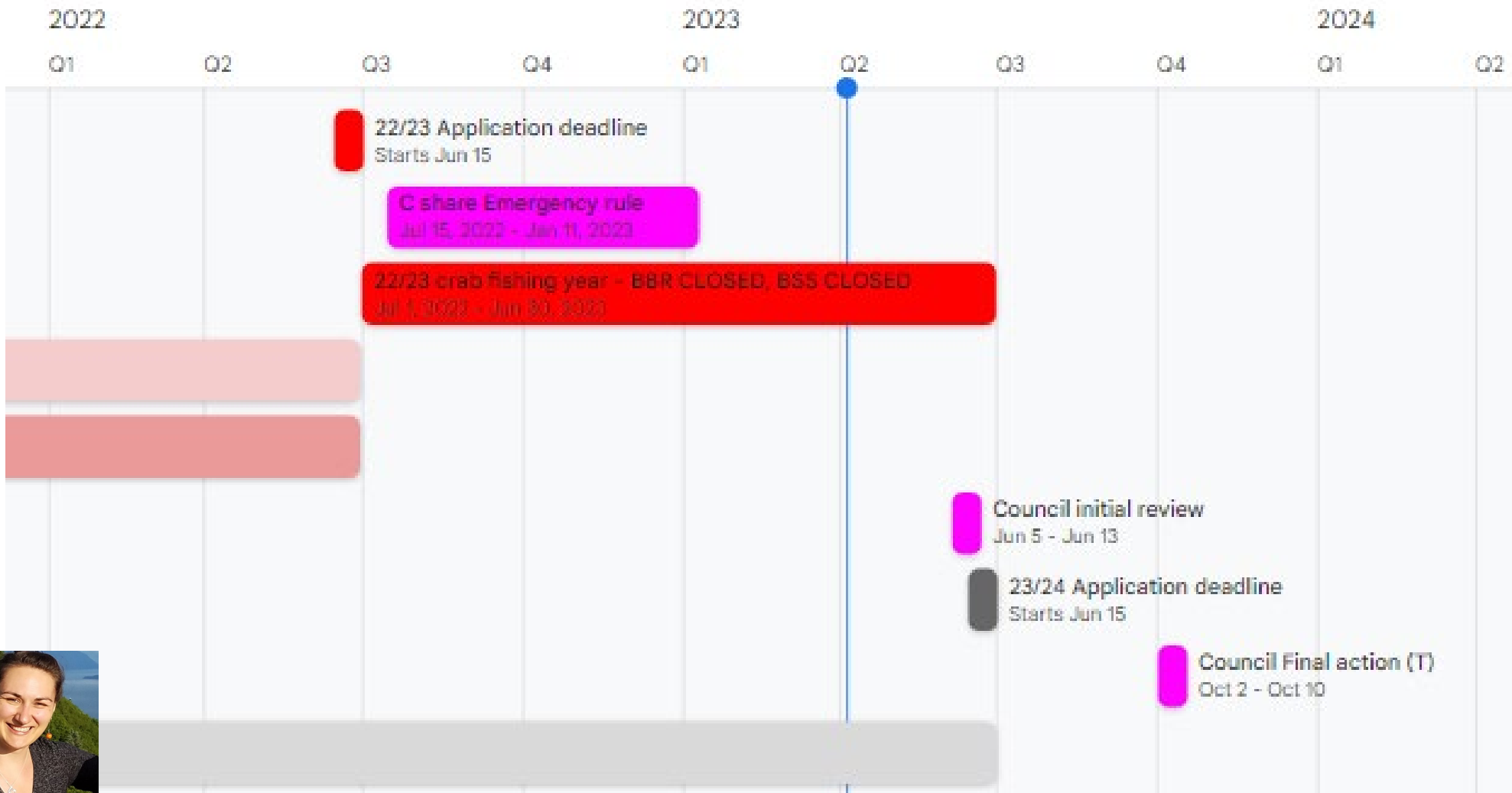
Is the need focused on exempting active participation during the convergence of “covid years” and closed fisheries or shifted to other factors (e.g., possible future low TACs)

- **Is the Council intending to include those who have had QS revoked in the action? (e.g., re-issuing QS?)**

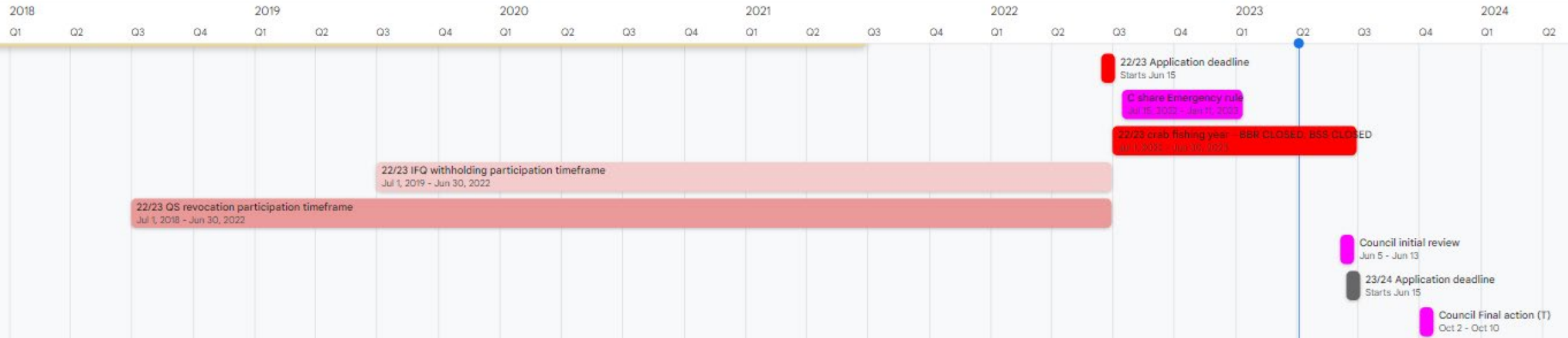
➤ **Answers to these questions could help inform a refined purpose and need and set of alternatives or a purpose and direction for a discussion paper**



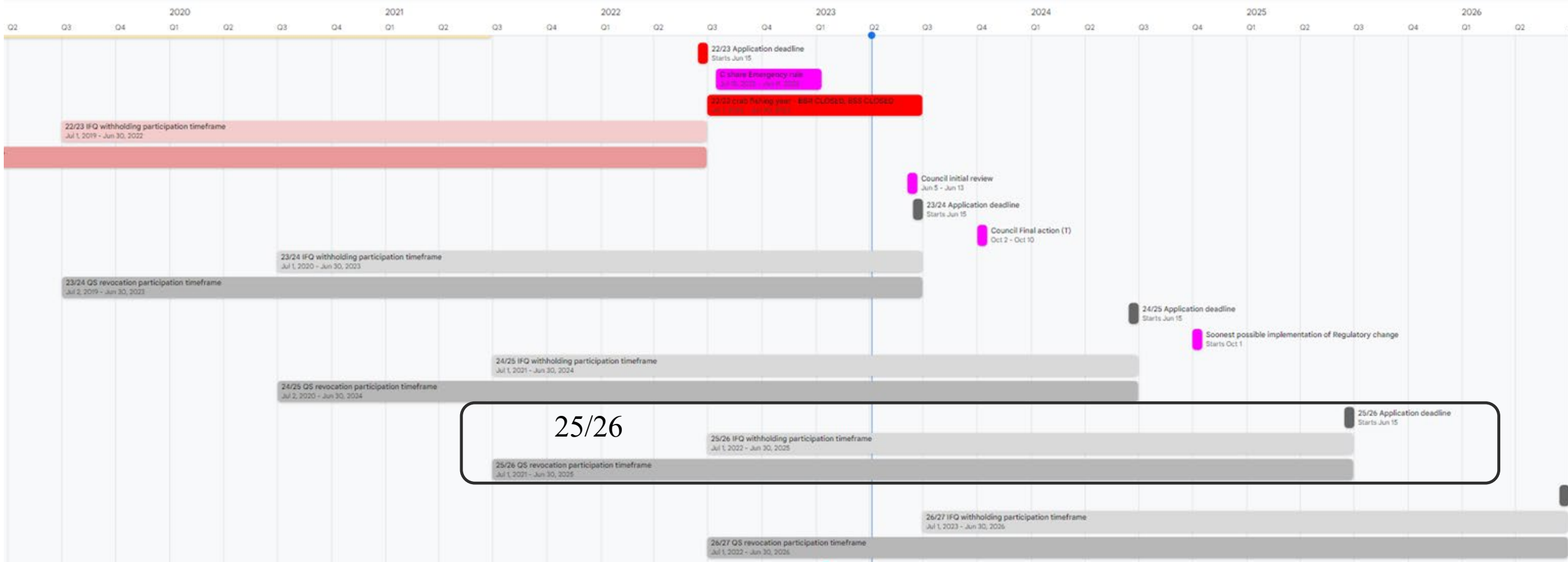
Timeline



Timeline



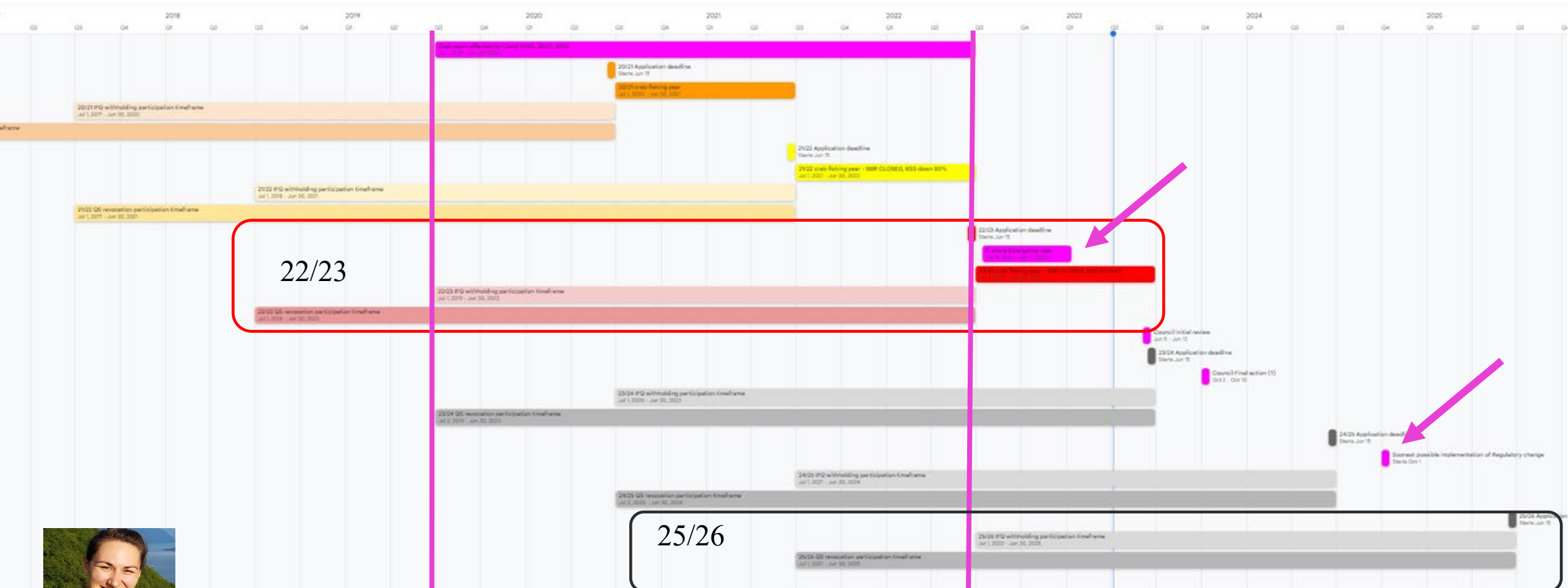
Timeline



25/26



Timeline



22/23

25/26

