

GOA Groundfish Plan Team

September 2016

Jim Ianelli*	AFSC REFM (co-chair)
Jon Heifetz	AFSC ABL (co-chair)
Jim Armstrong*	NPFMC (coordinator)
Mike Dalton	AFSC REFM
Obren Davis	NMFS AKRO
Craig Faunce	AFSC FMA
Sandra Lowe	AFSC REFM
Chris Lunsford	AFSC ABL
Patrick Lynch**	S&T NOAA HQ
Jan Rumble	ADF&G
Paul Spencer	AFSC REFM
Mark Stichert	ADF&G
Ben Williams**	ADF&G

GOA Stock Structure Template

- The Team inventoried completed stock structure documents to date and recommended that the template be completed for shortraker rockfish for November 2016

Shark research: dogfish catchability

- Availability of spiny dogfish to the bottom trawl survey
 - Inform the catchability coefficient (q)?
 - Satellite tag data that collect temperature, salinity, depth, and light levels
 - 46 tags spanning 2010-2013
- **PT Recommendations**
Continue research on this issue



Science, Service, Stewardship

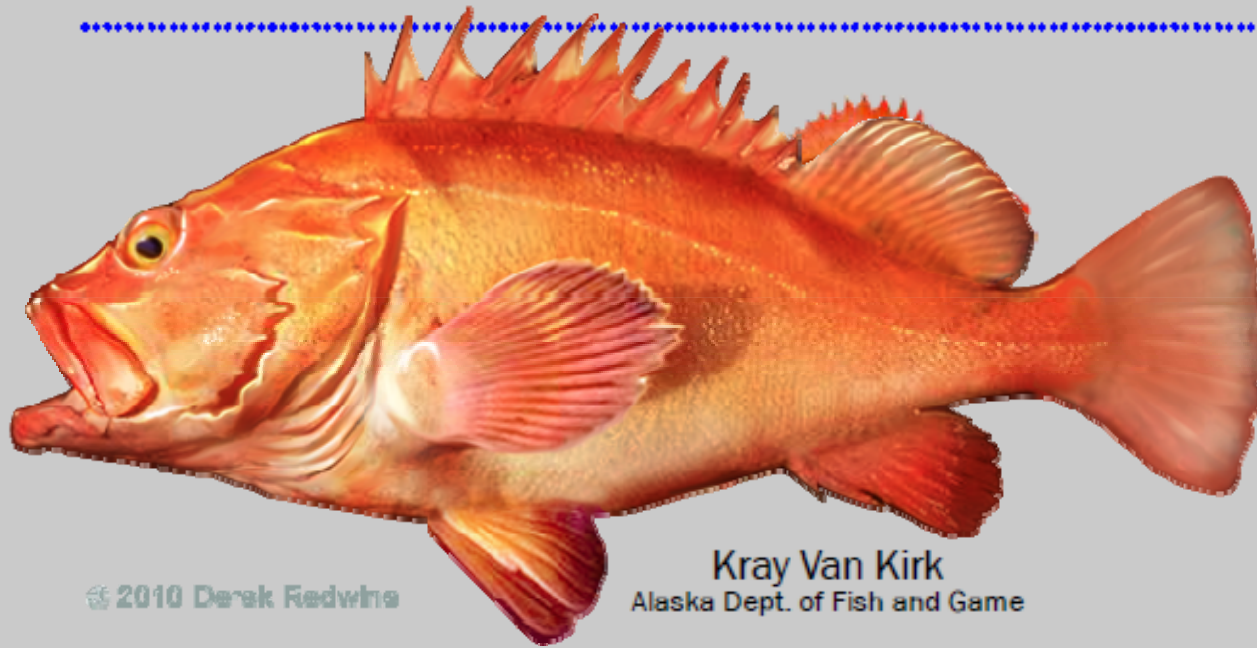


Research update: Can Satellite Tags Inform Management for a Data Poor Species?

Pete Hulson, Cindy Tribuzio, and
Karson Coutre
Auke Bay Lab, AFSC

**NOAA
FISHERIES
SERVICE**

An age-structured assessment model for
yelloweye rockfish (*Sebastes ruberrimus*)
in Southeast Alaska Outside Waters

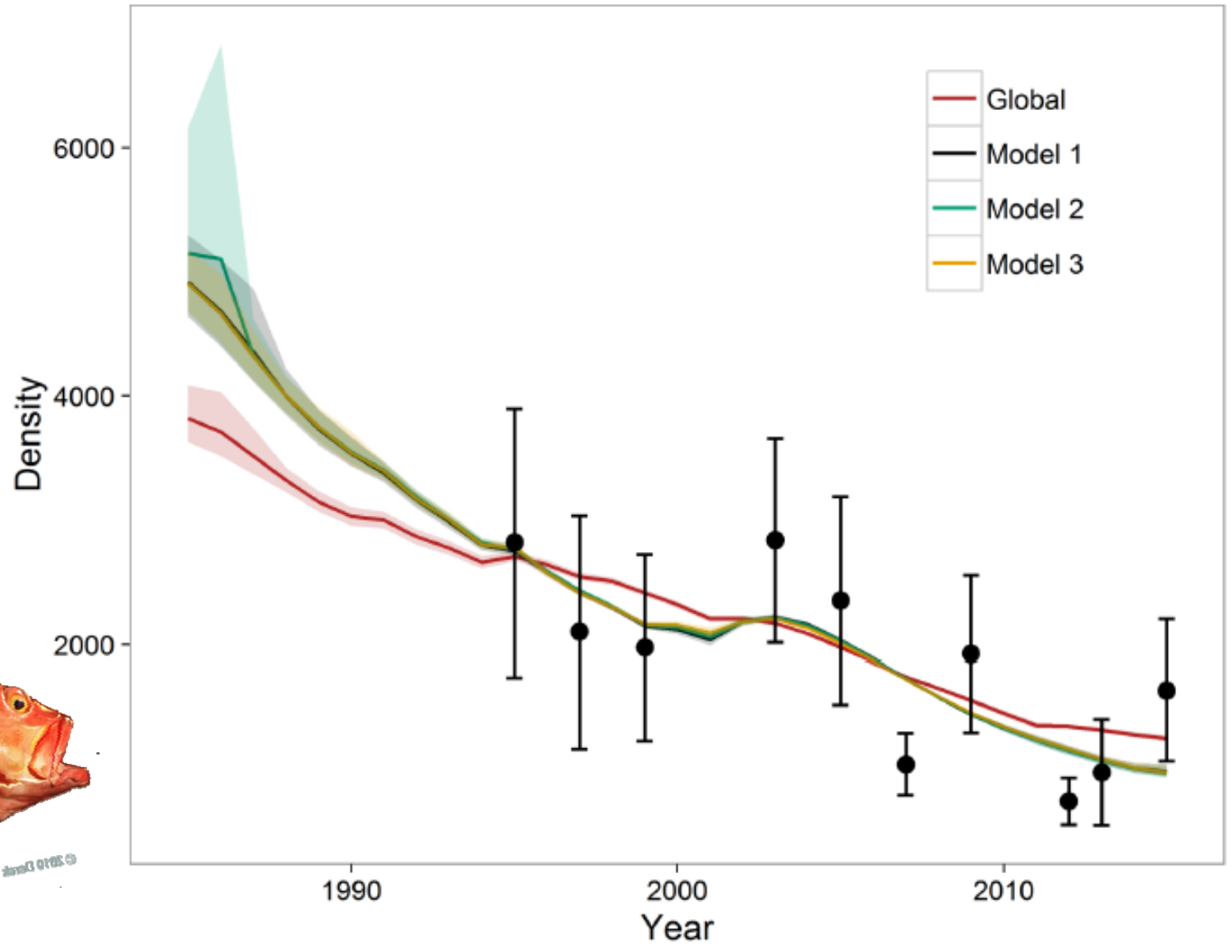


© 2010 Derek Redwine

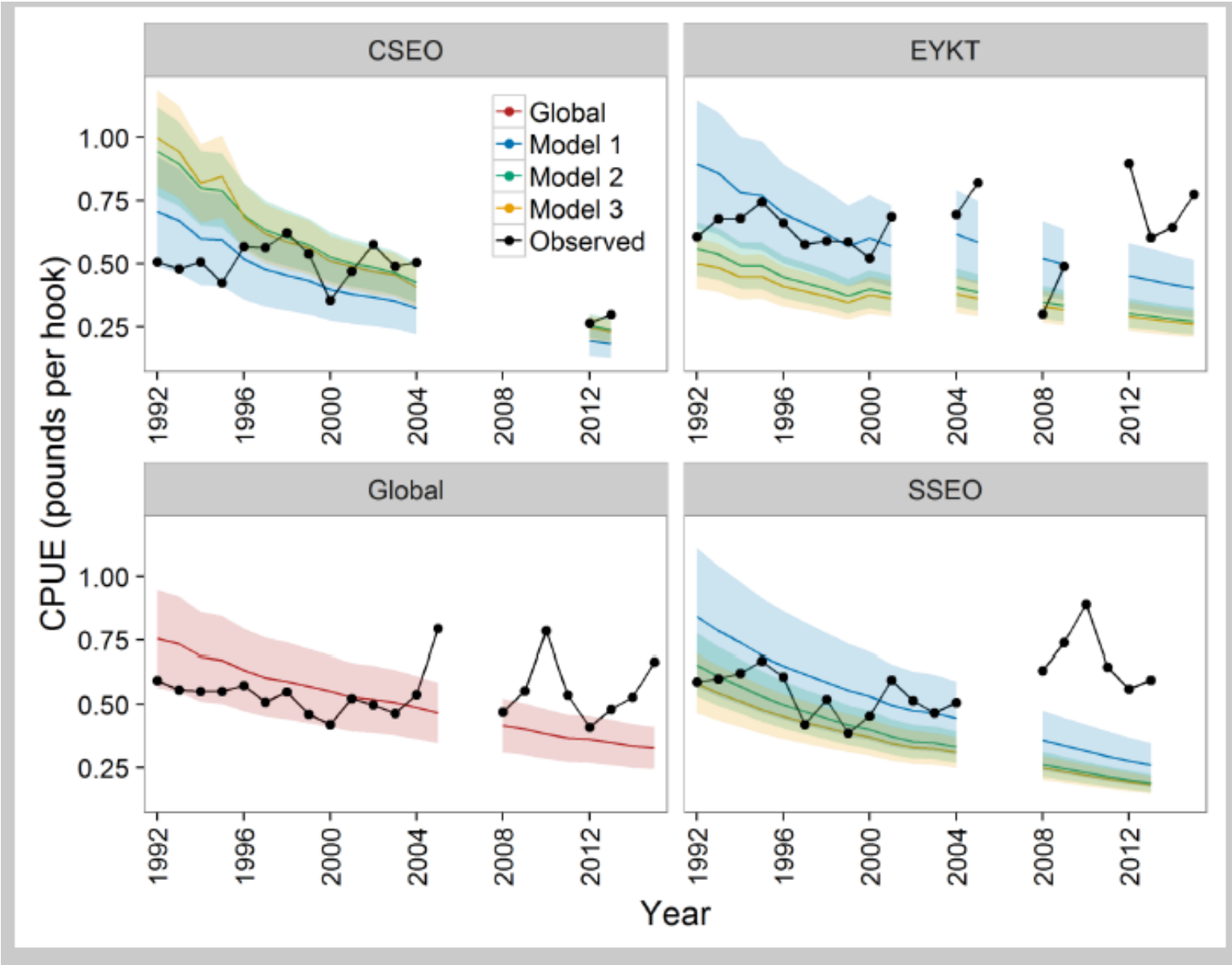
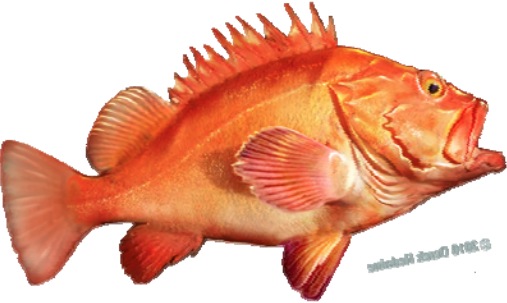
Kray Van Kirk
Alaska Dept. of Fish and Game

Andrew Olson
Ben Williams
Jennifer Stahl
Kamala Carroll

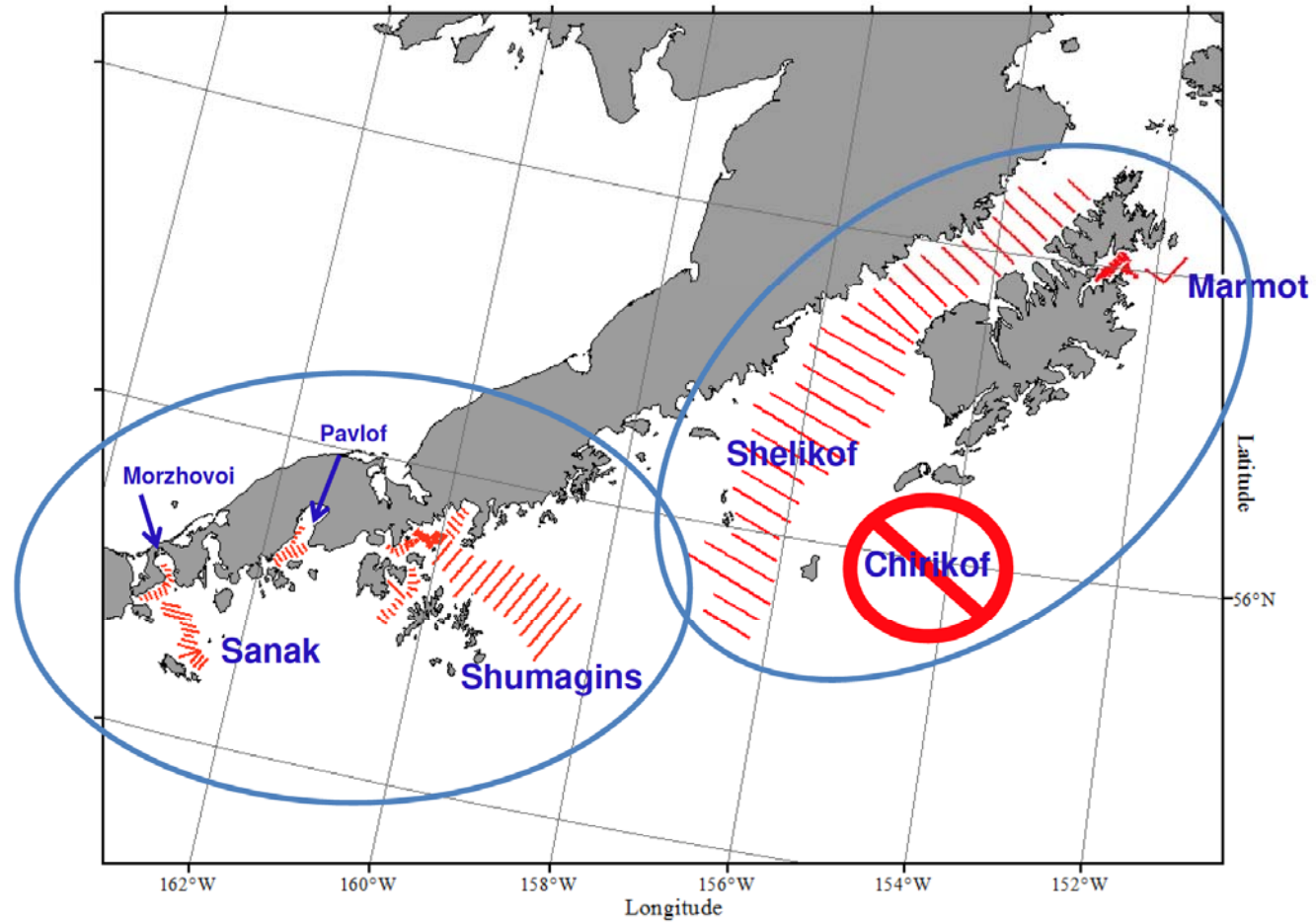
Yelloweye Rockfish Model (GOA DSR)



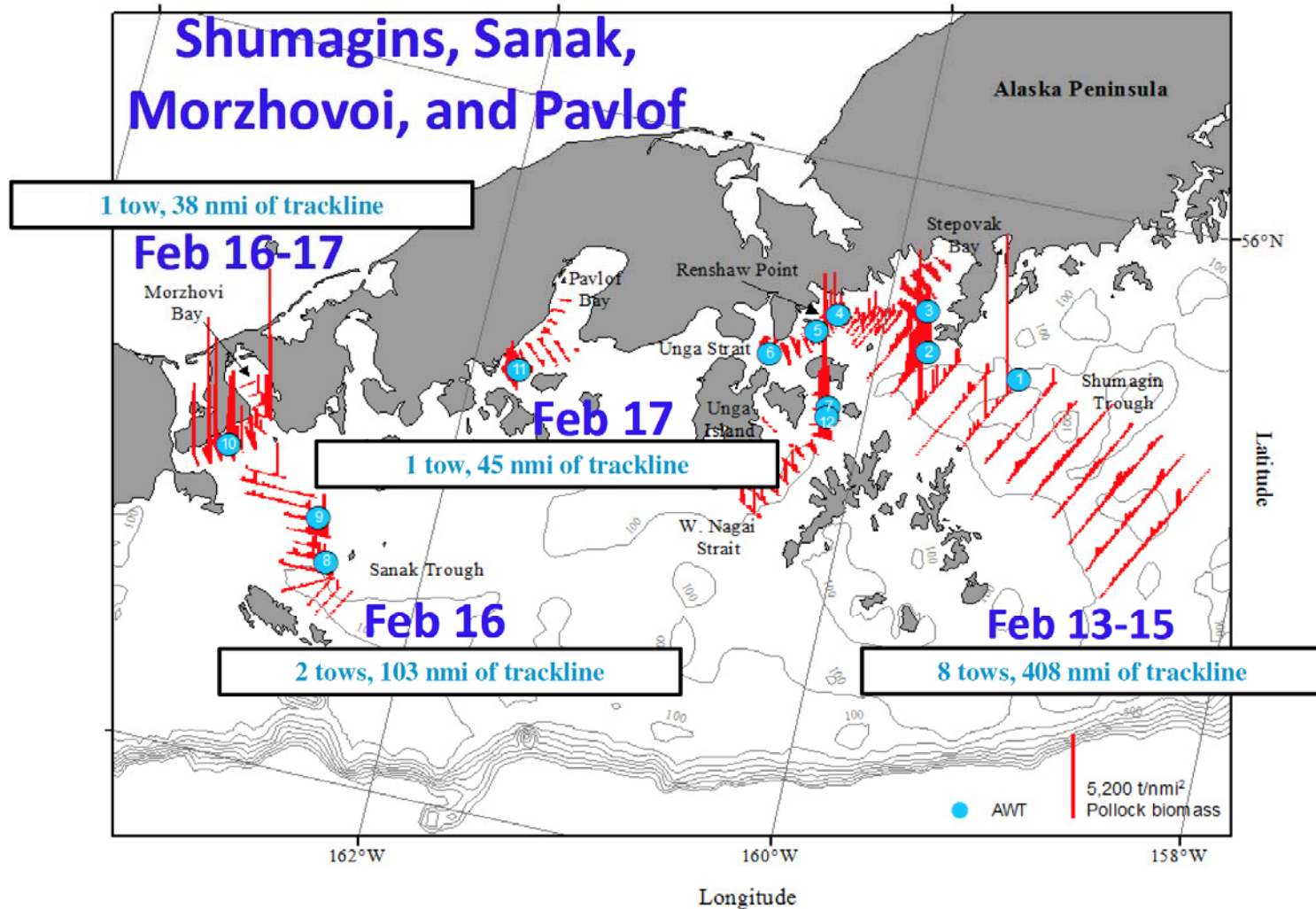
Yelloweye
Rockfish
Model
(GOA DSR)
Development
continues for
2017 application



GOA Pollock Winter acoustics-trawl survey

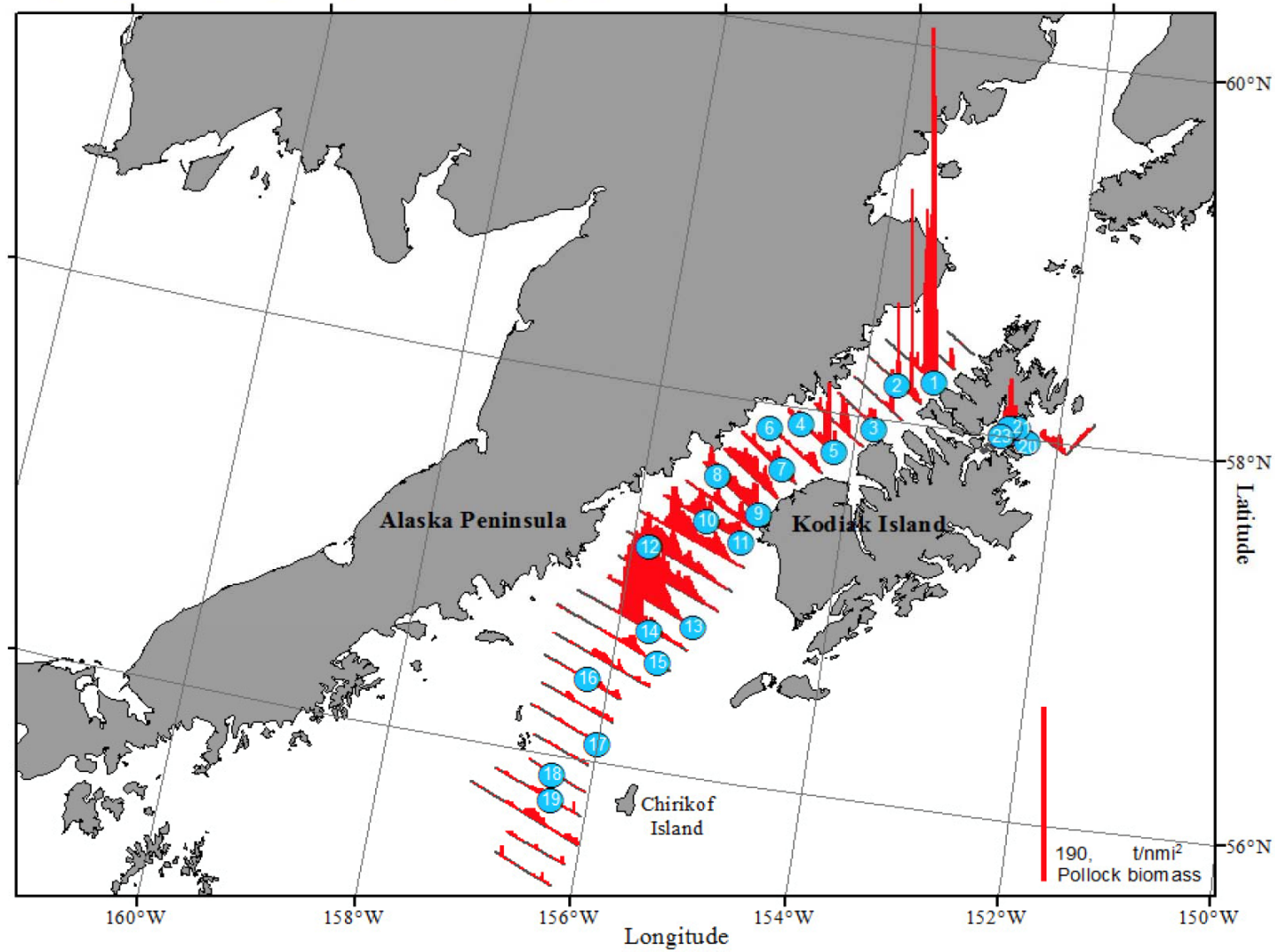


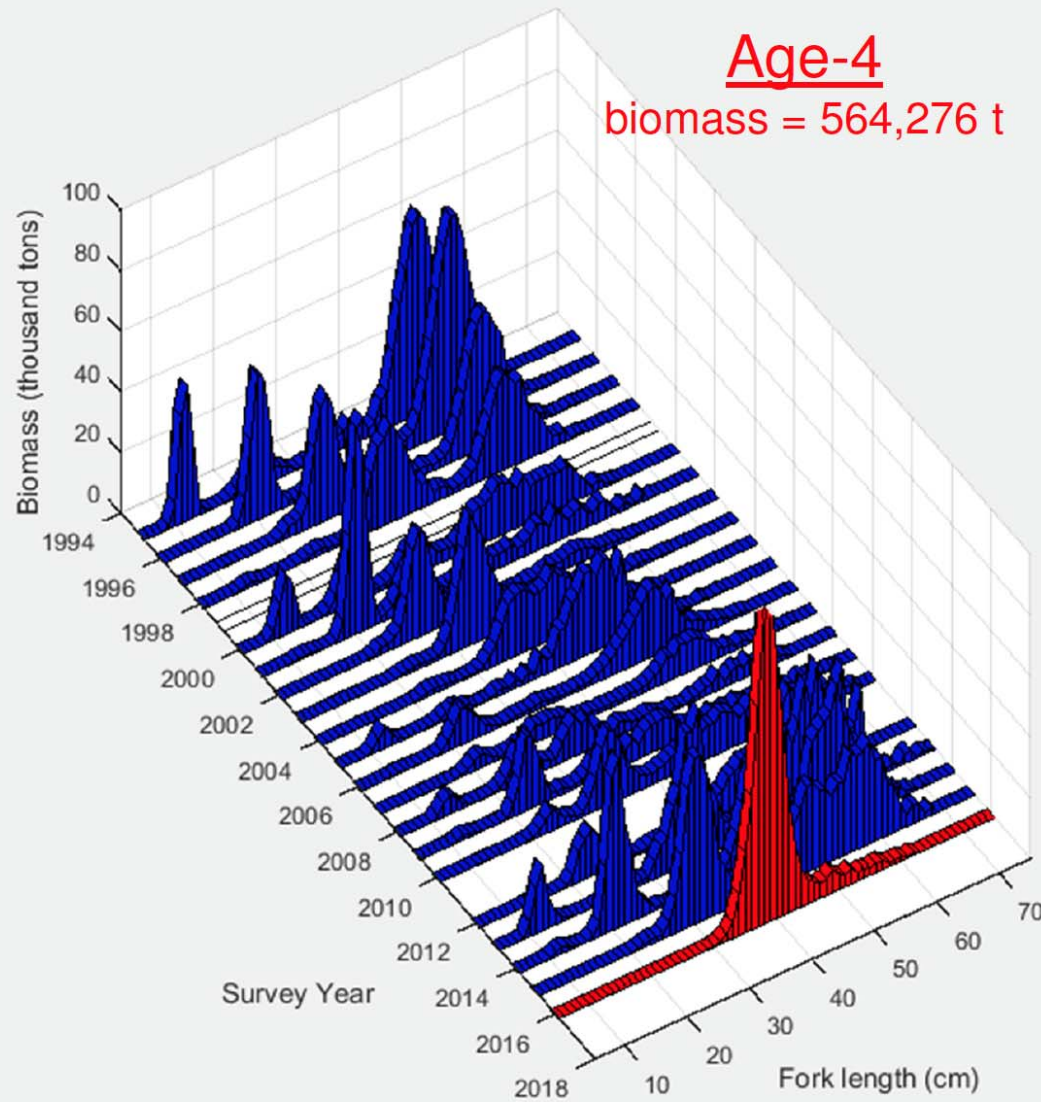
GOA winter acoustics-trawl survey.



Shelikof and Marmot

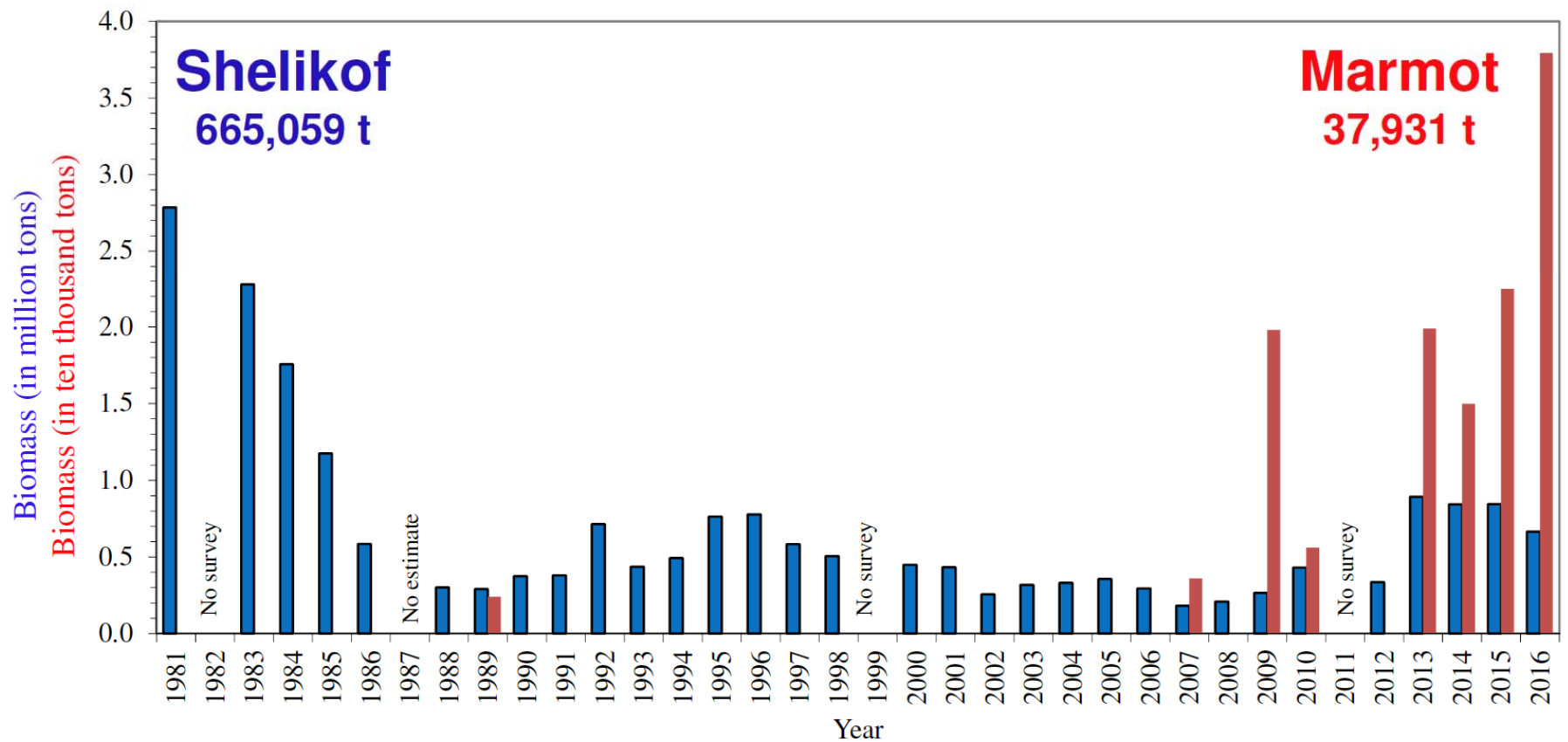
Shelikof survey

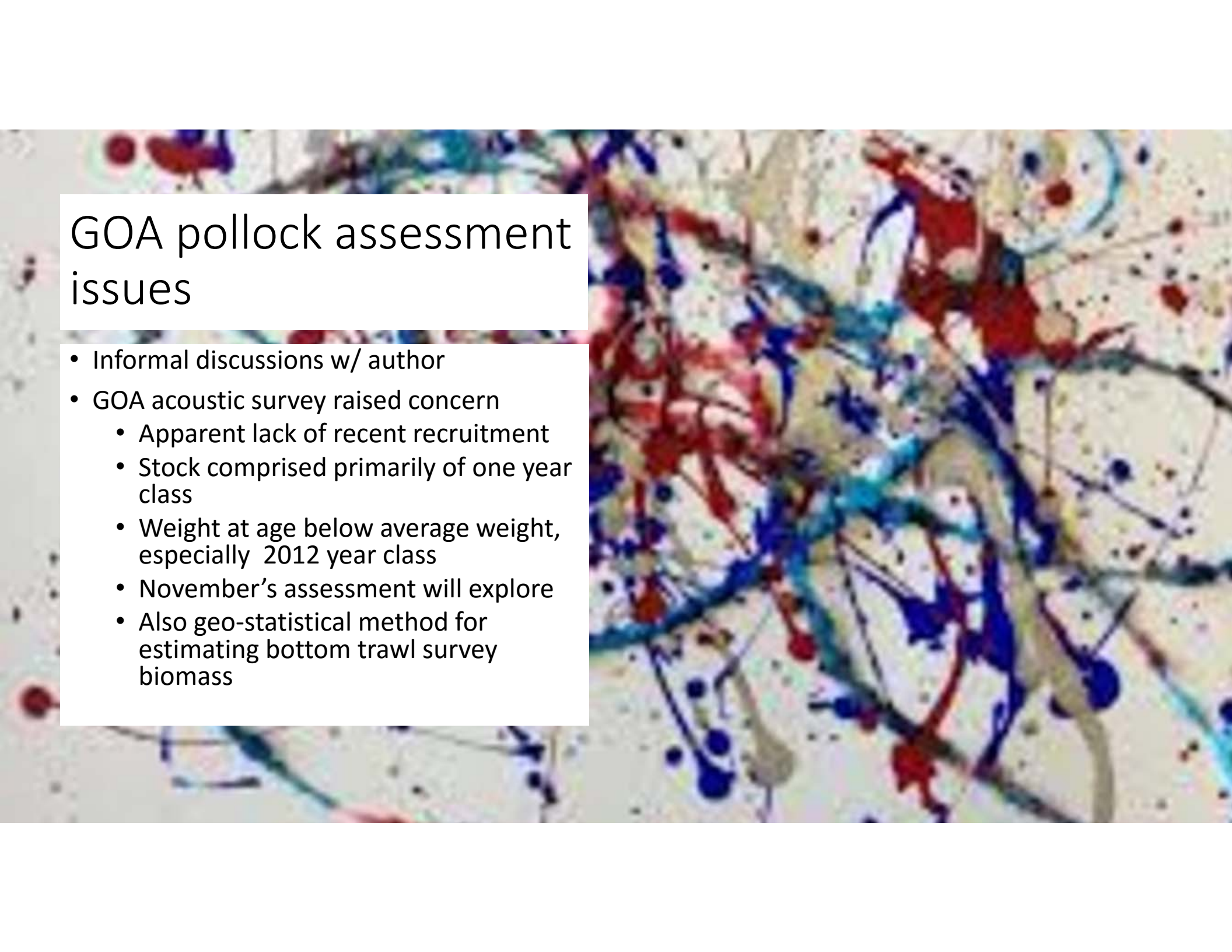




Shelikof Strait Historic Pollock Size Composition

Pollock Biomass Estimates: Time Series





GOA pollock assessment issues

- Informal discussions w/ author
- GOA acoustic survey raised concern
 - Apparent lack of recent recruitment
 - Stock comprised primarily of one year class
 - Weight at age below average weight, especially 2012 year class
 - November's assessment will explore
 - Also geo-statistical method for estimating bottom trawl survey biomass

GOA Pacific cod

Twenty different models were developed. A base model was developed, with many simplifications from the 2015 model including (but not limited to):

1. Aggregating catch data over seasons
2. Use of time-invariant fishery selectivity
3. Reducing the age plus group from 20+ to 12+
4. Removing the estimation of age bias from the model; and
5. Including age and length composition data, and removing conditional length at age data

2017 and 2018 Harvest Specifications

The Plan Team recommended:

Rolling over the 2017 GOA final harvest specifications for OFLs and ABCs (as published in the Federal Register in March 2016) for the *proposed* 2017 and 2018 OFLs and ABCs