

# CP Chinook Salmon Bycatch Reduction Incentive Plan Annual Report 2015

April 2016

NPFMC



**AT-SEA PROCESSORS ASSOCIATION**

Partners for Healthy Fisheries

# Primary IPA components

- Data gathering, monitoring, reporting, information sharing.
- Identification of bycatch avoidance areas.
- Fishing area prohibitions for vessels with poor bycatch performance.
- A-season closed area.
- Conditional B-season closed areas.



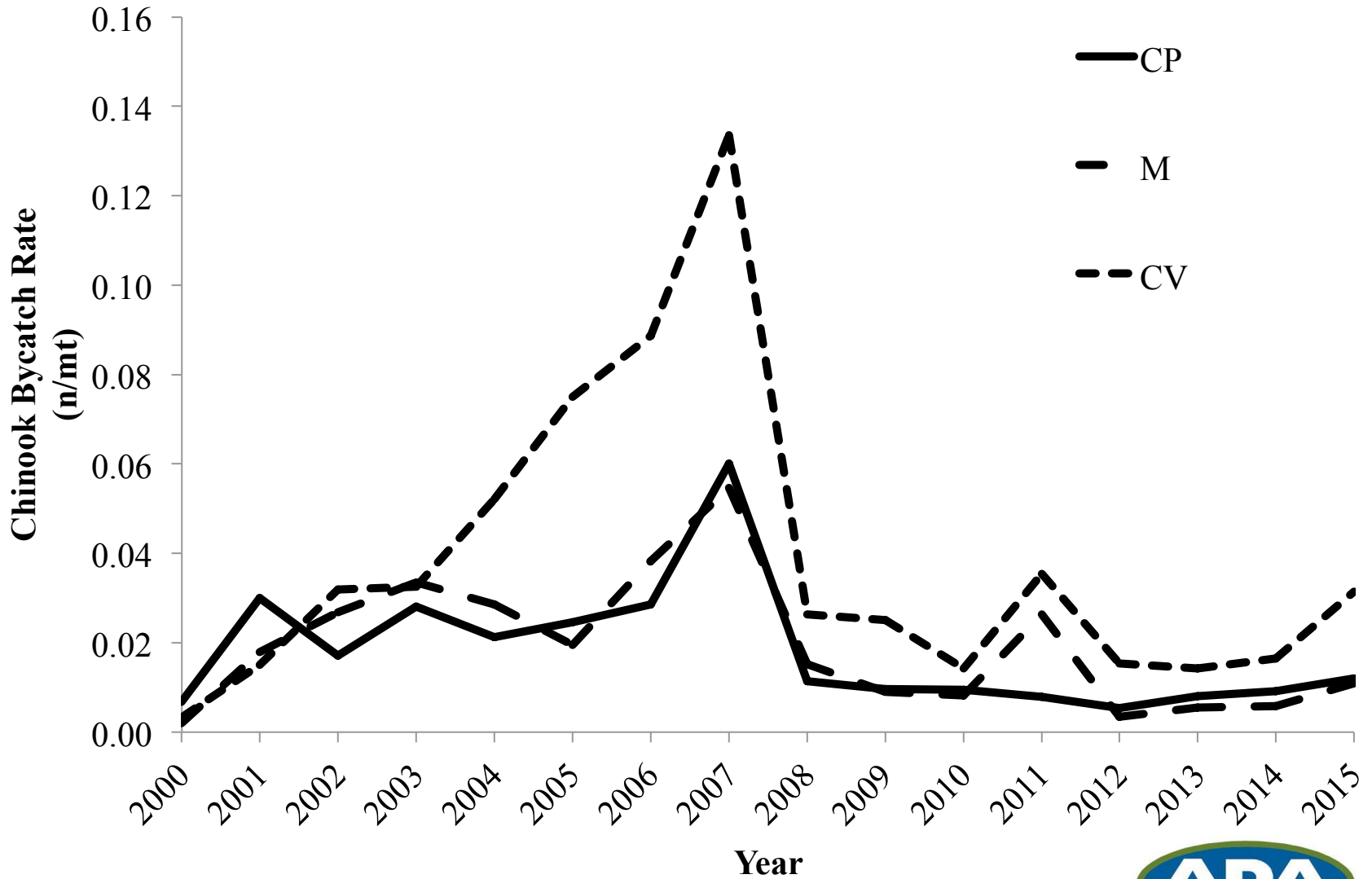
# 2015 CP IPA results—Chinook PSC and pollock catch

A Season		B-Season	
Pollock (mt)	Chinook (n)	Pollock (mt)	Chinook (n)
233,553	3,821	356,952	2,624

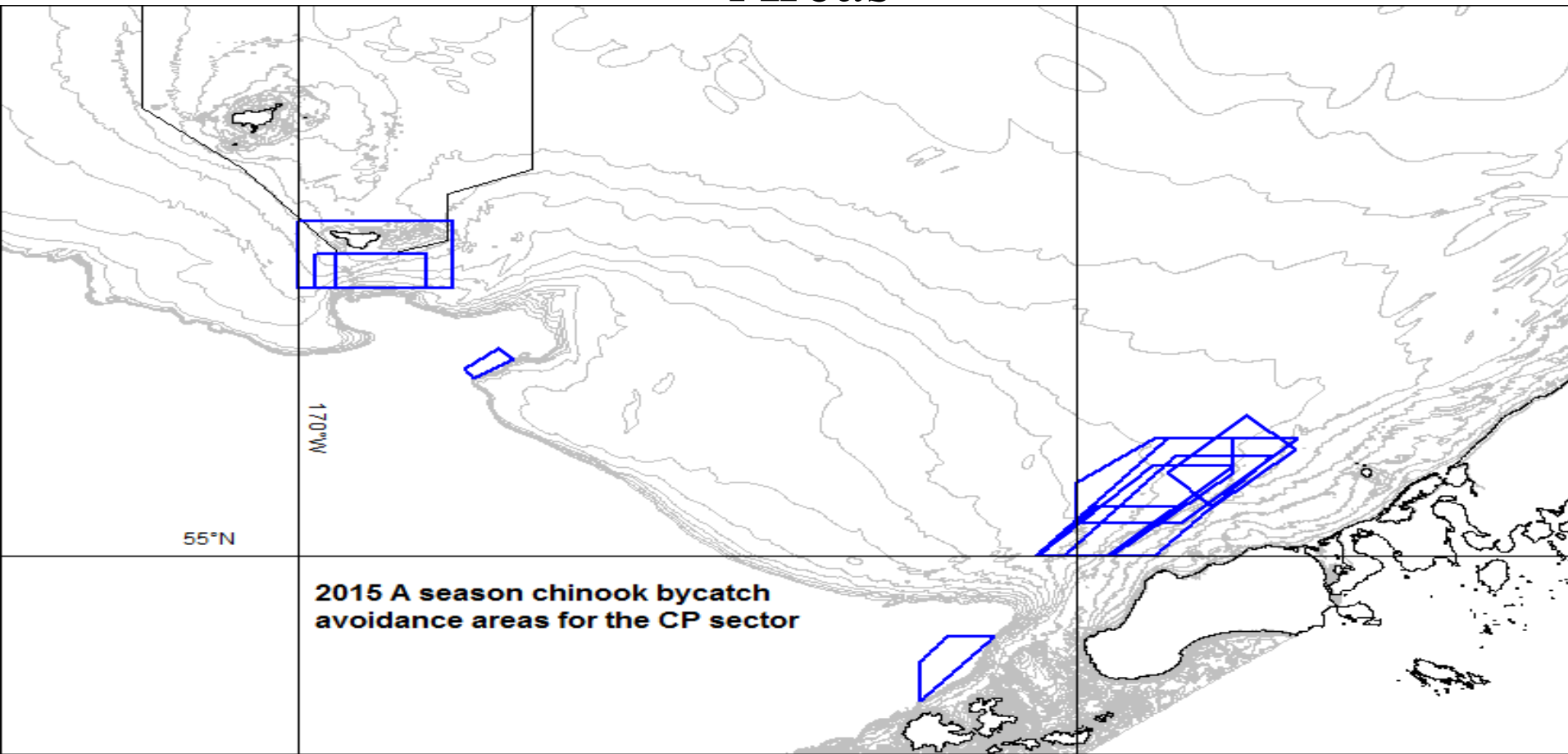
\*All IPA participants (PCC, HSCC, OP, CDQ)



# 2015 CP IPA results—Chinook PSC rates



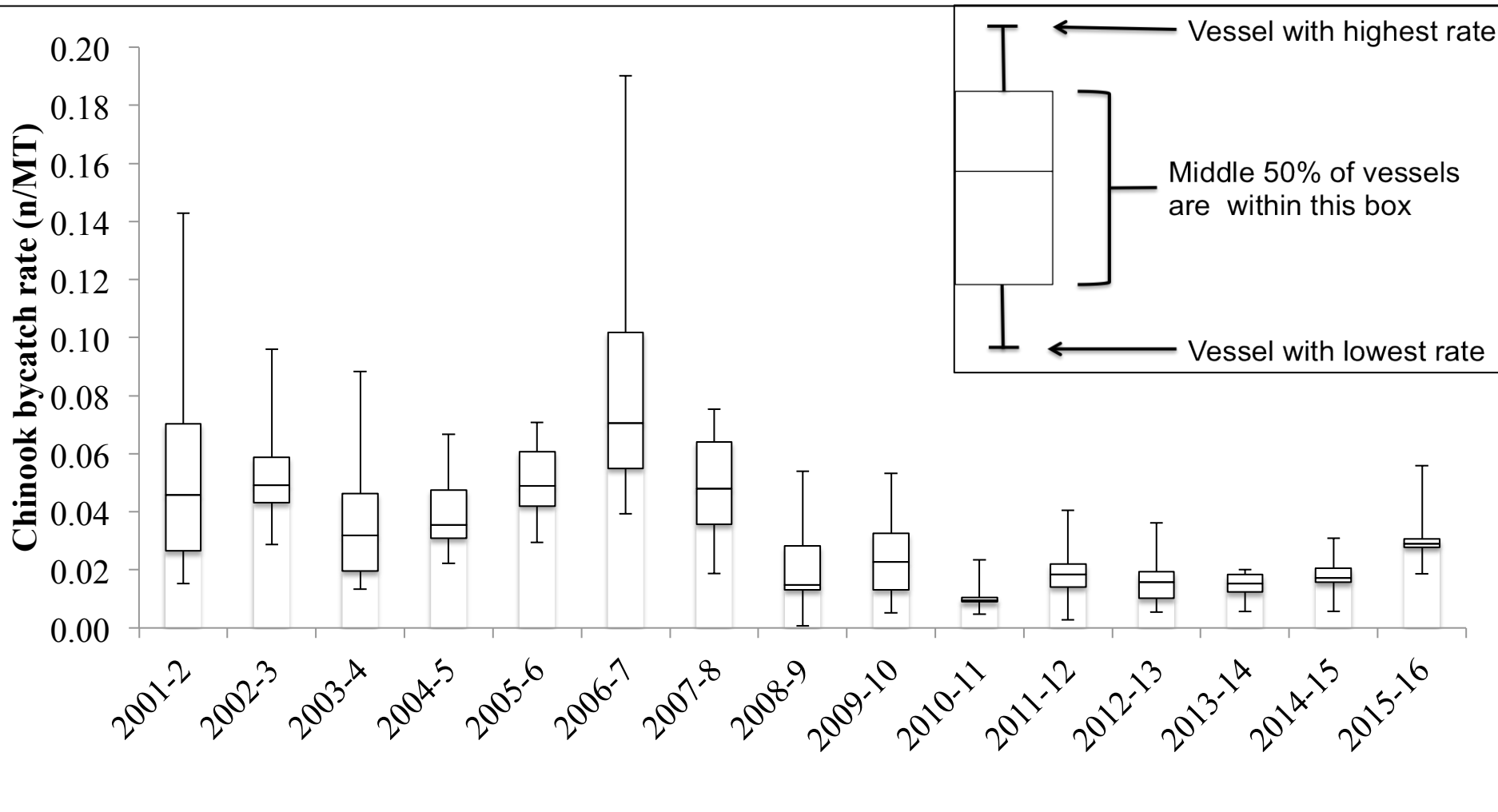
# 2015 CP IPA results—A-season Bycatch Avoidance Areas



Week	1/29	2/5	2/12	2/19	2/26	3/5	3/12	3/19	3/26	4/02
# of C/Ps excluded from BAAs	4	1	0	4	7	2	1	0	0	0



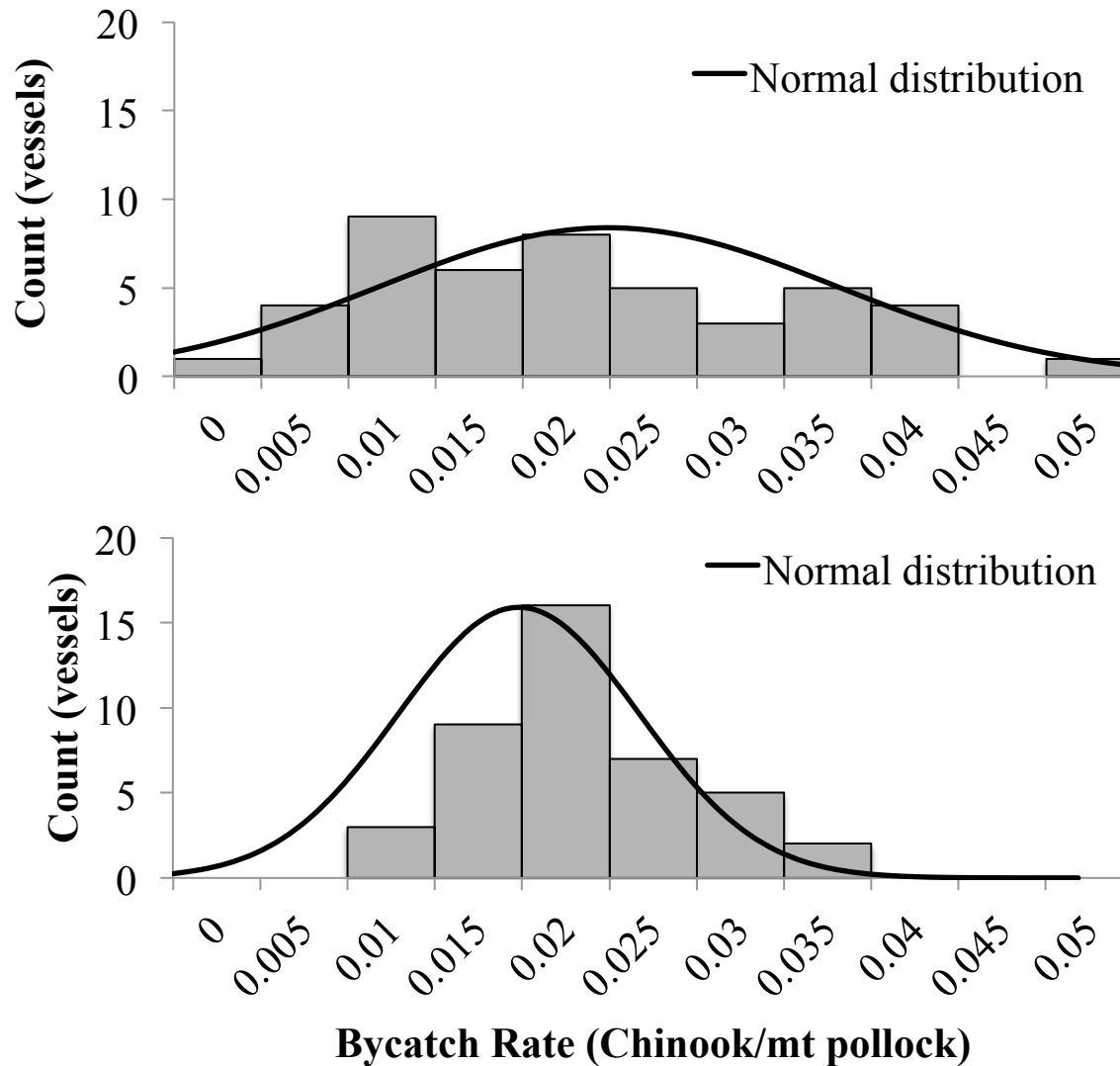
# 2015 CP IPA results—Effects of Incentive Measures



Vessel Chinook bycatch rate distribution by year for 1 Sept-1 March.



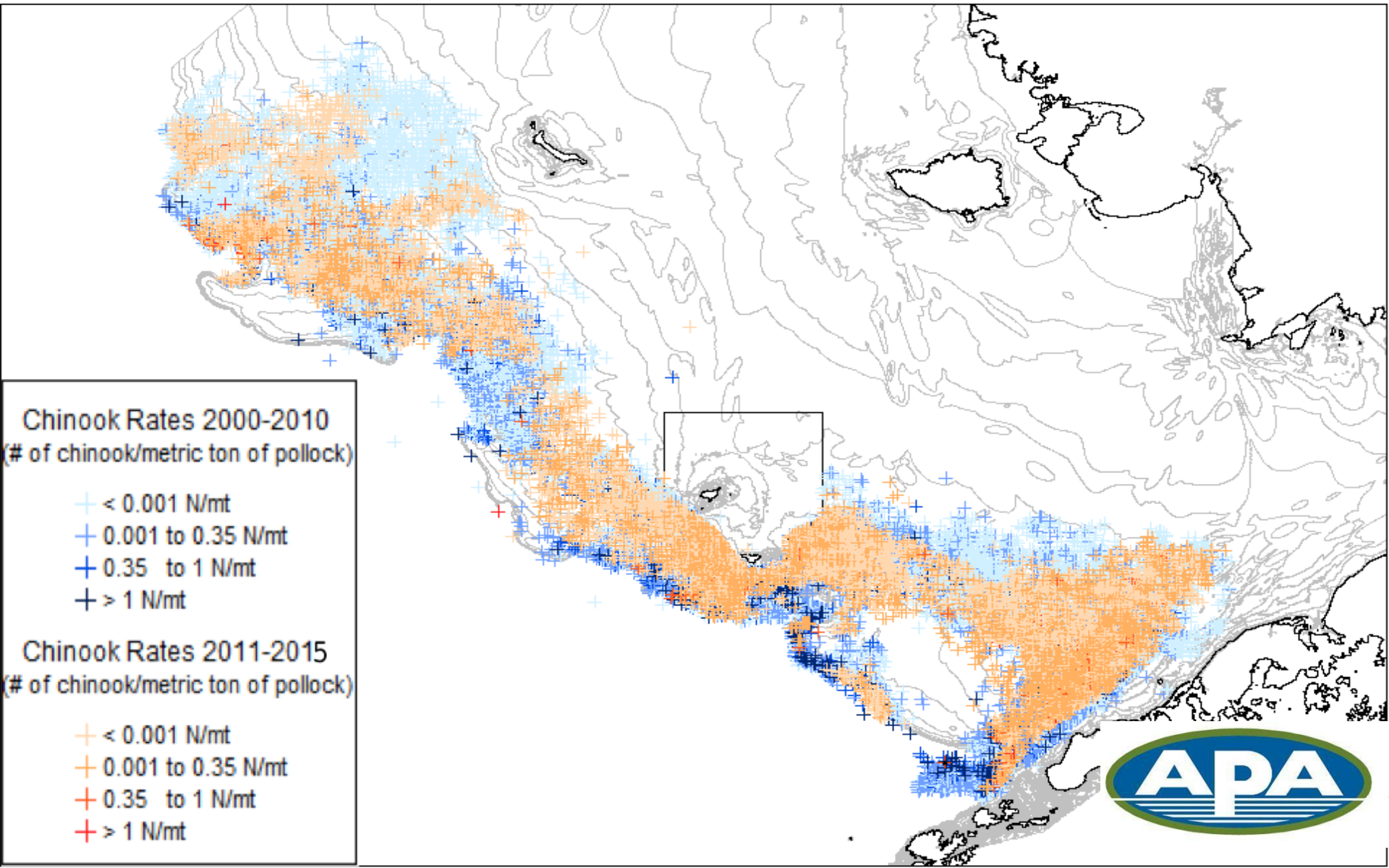
# 2015 CP IPA results—Effects of Incentive Measures



**Upper panel: A-Season CP Vessel Chinook Bycatch Rate Frequency Distribution for 2008-2010 with a variance of 0.006 and Lower panel: Distribution for 2013-2015 with variance equal to 0.0004.**

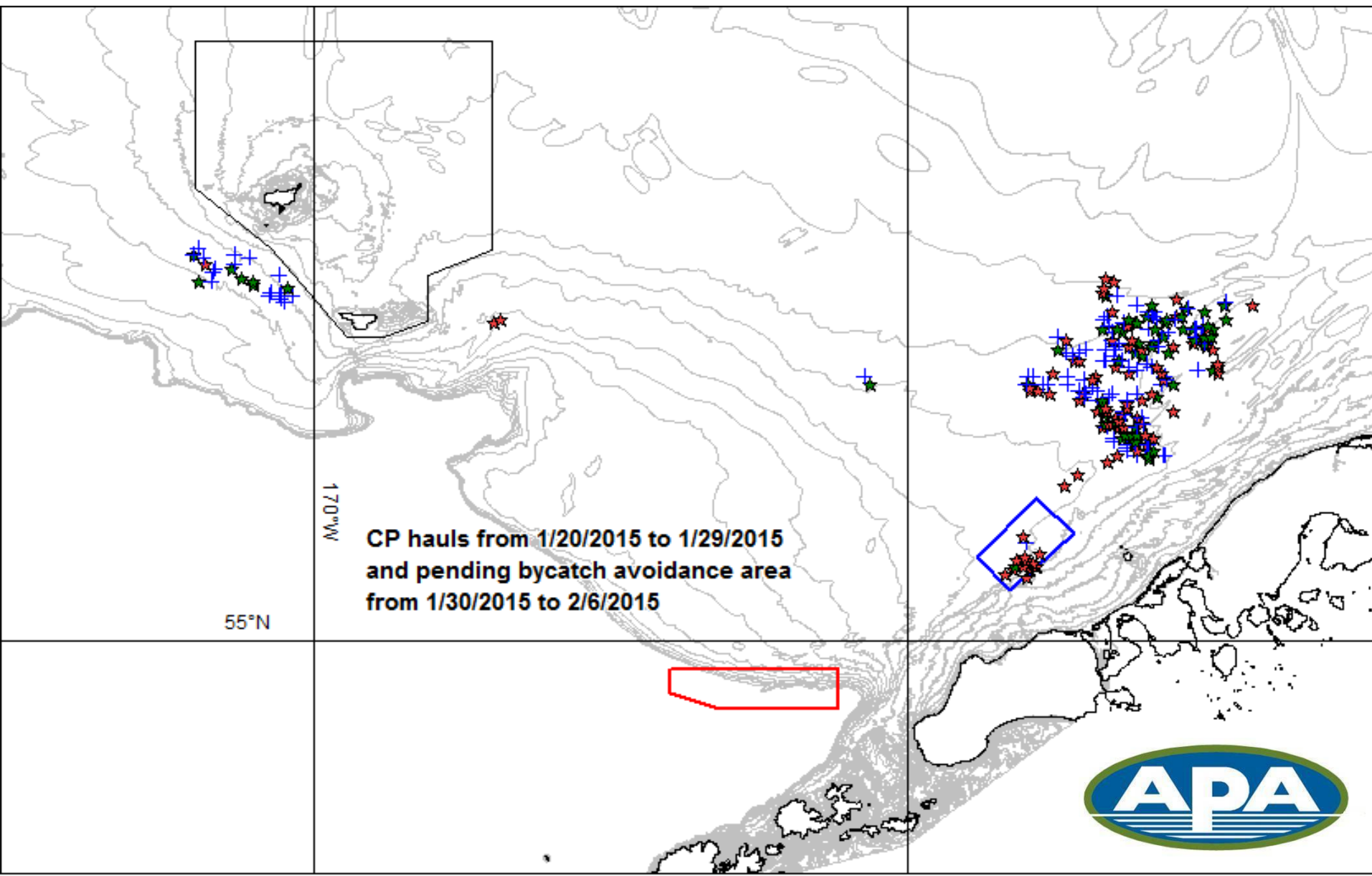


# 2015 CP IPA results—Effects of Incentive Measures

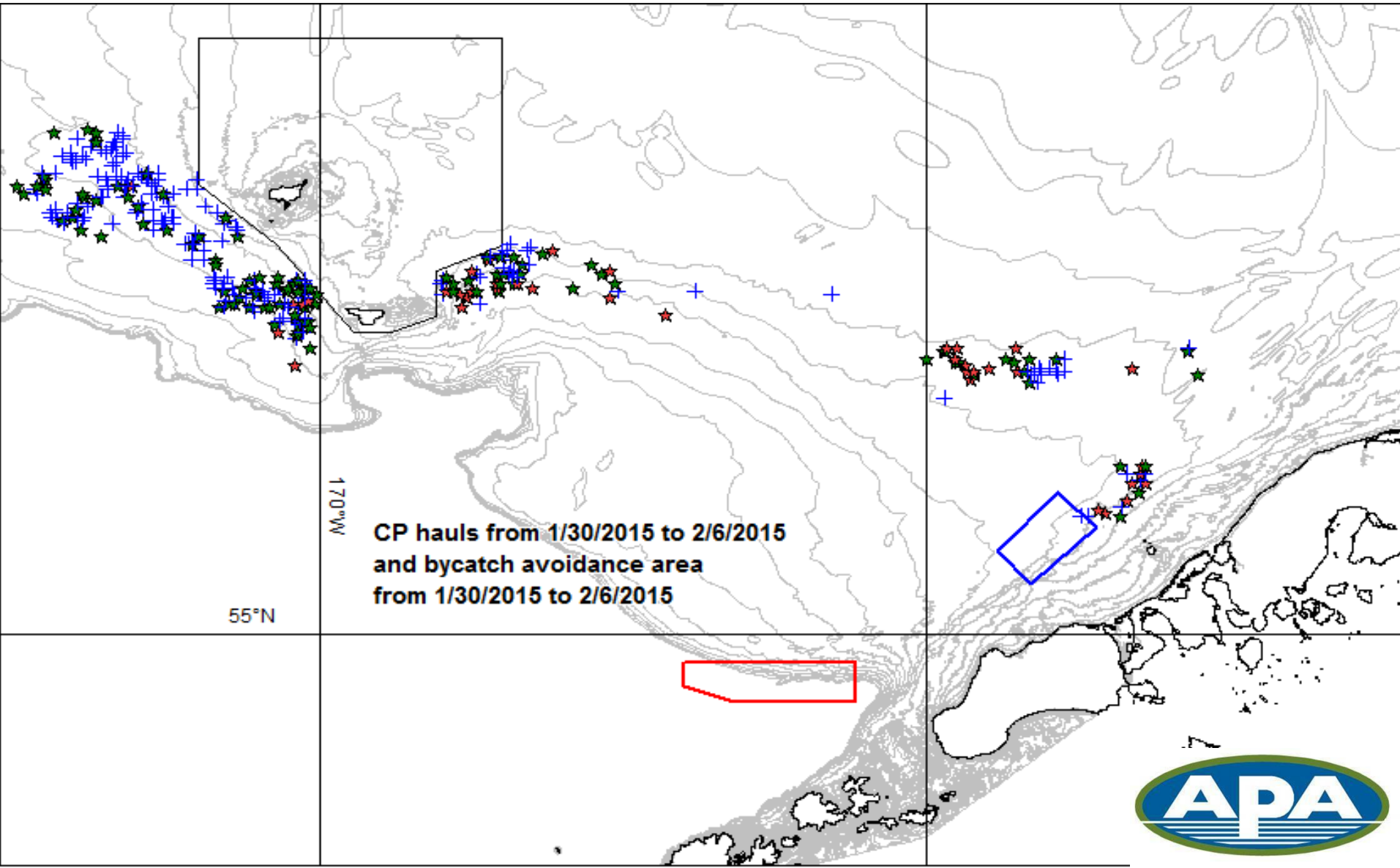




# 2015 CP IPA results—Effects of Incentive Measures



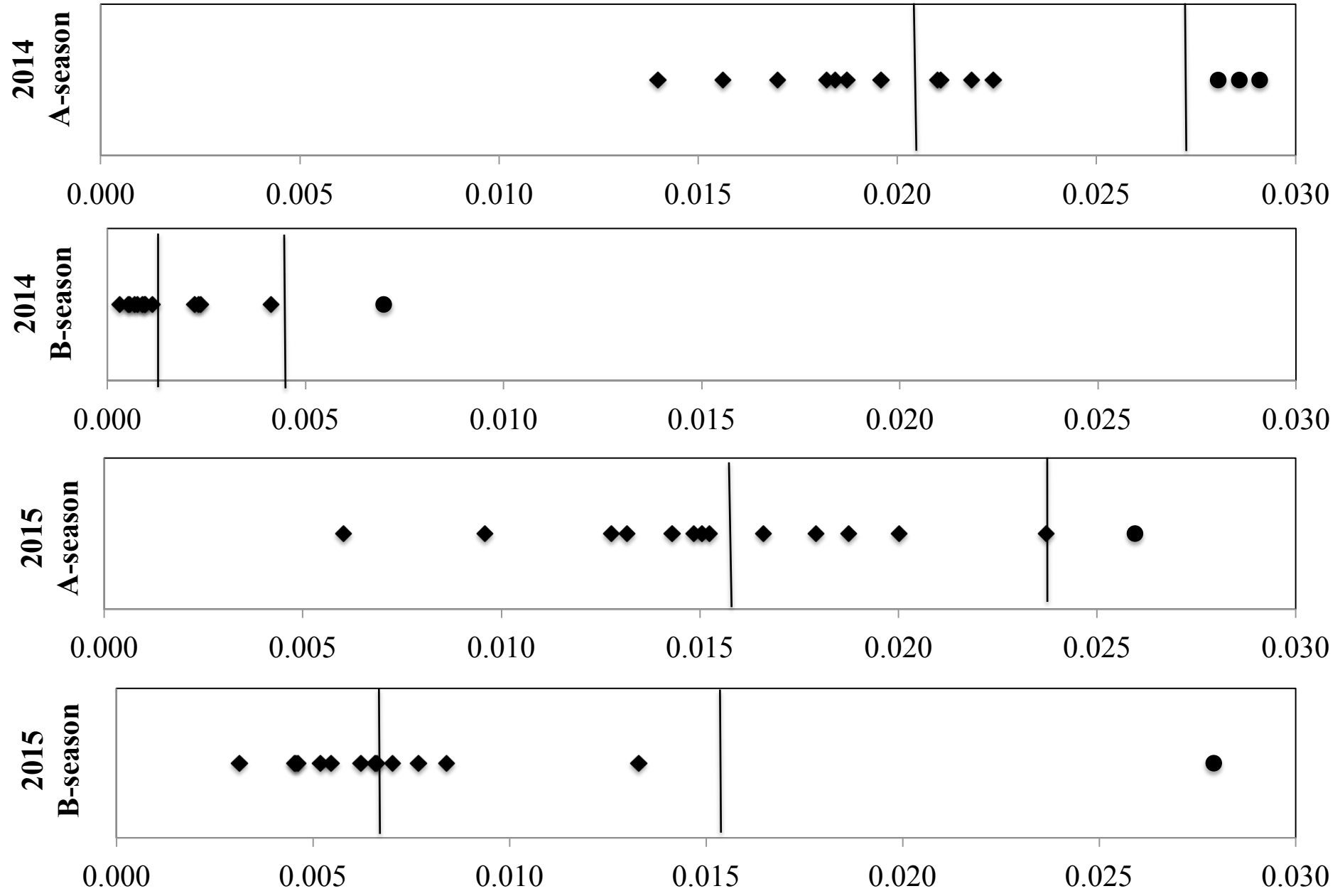
# 2015 CP IPA results—Effects of Incentive Measures



# NEW 2015 IPA Amendments

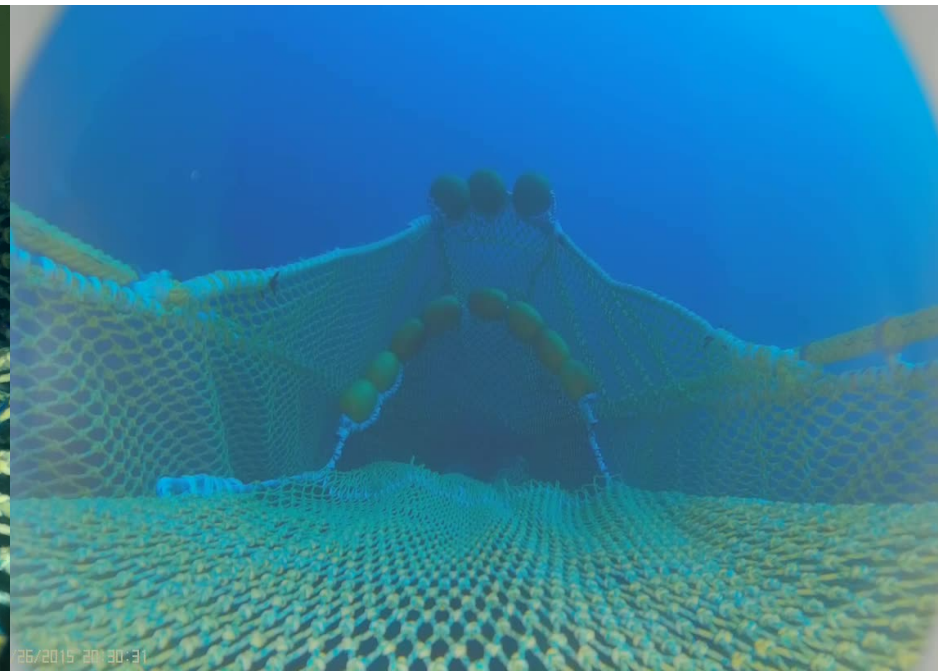
- Salmon excluders required- All A-season trawls and September/October B-season trawls
- Disincentive to chronic poor bycatch performance: Poor performers are prohibited from fishing in all BAA and seasonal closed areas

# NEW 2015 IPA Amendments



# Use of New Gear Technologies

- MacMarine prototype titanium trawl camera  
Mobius ActionCam HD wide-angle lens
- Sexton prototype Aluminum trawl camera
- Underwater LED lights attract both chum and Chinook salmon in field experiments





Thank you

Questions?

