

Pollock assessment update and plans

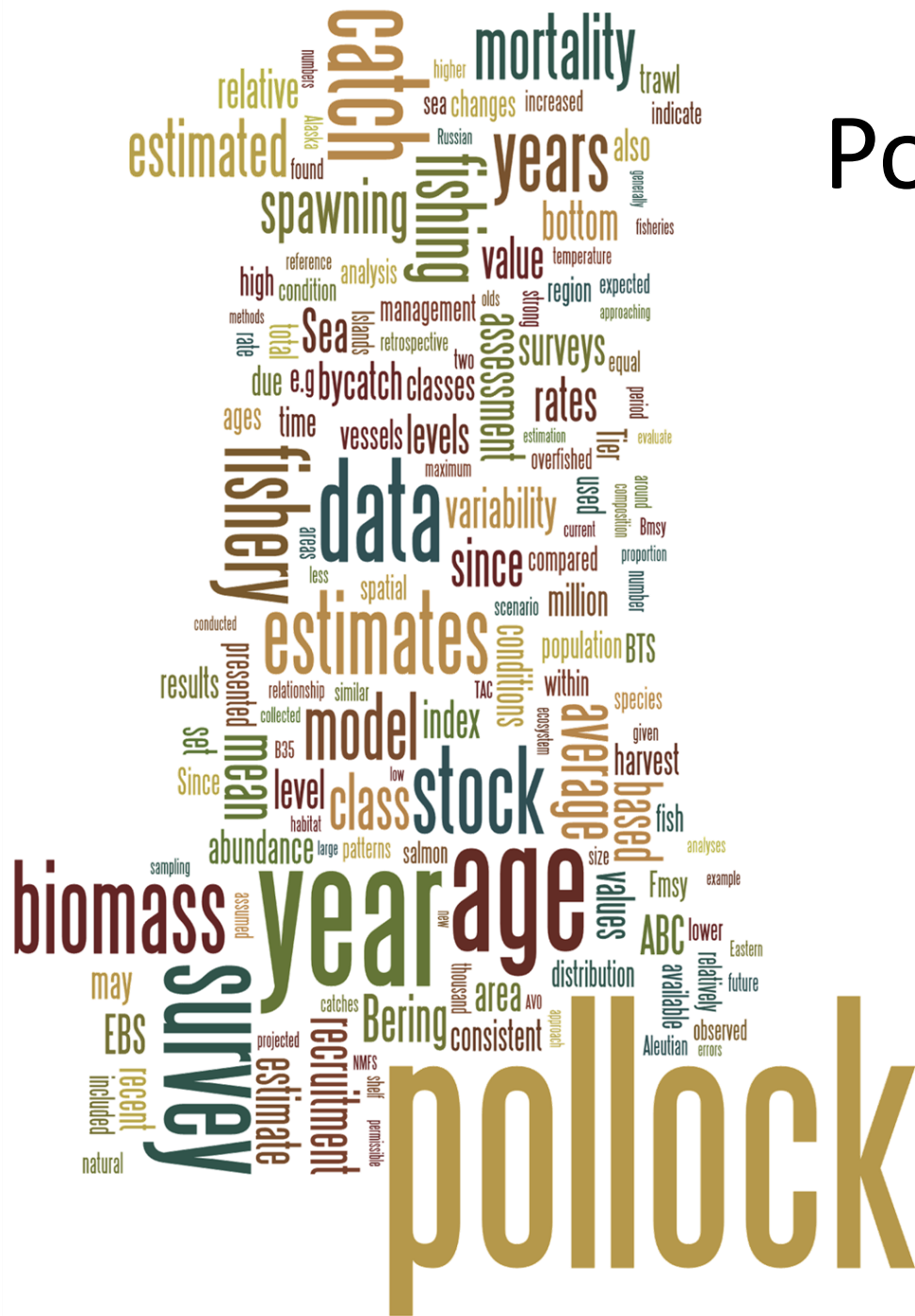
James Ianelli

Contributions from
Cole Monnahan, Cecilia O'leary,
Ellen Yasumiishi, and James T. Thorson

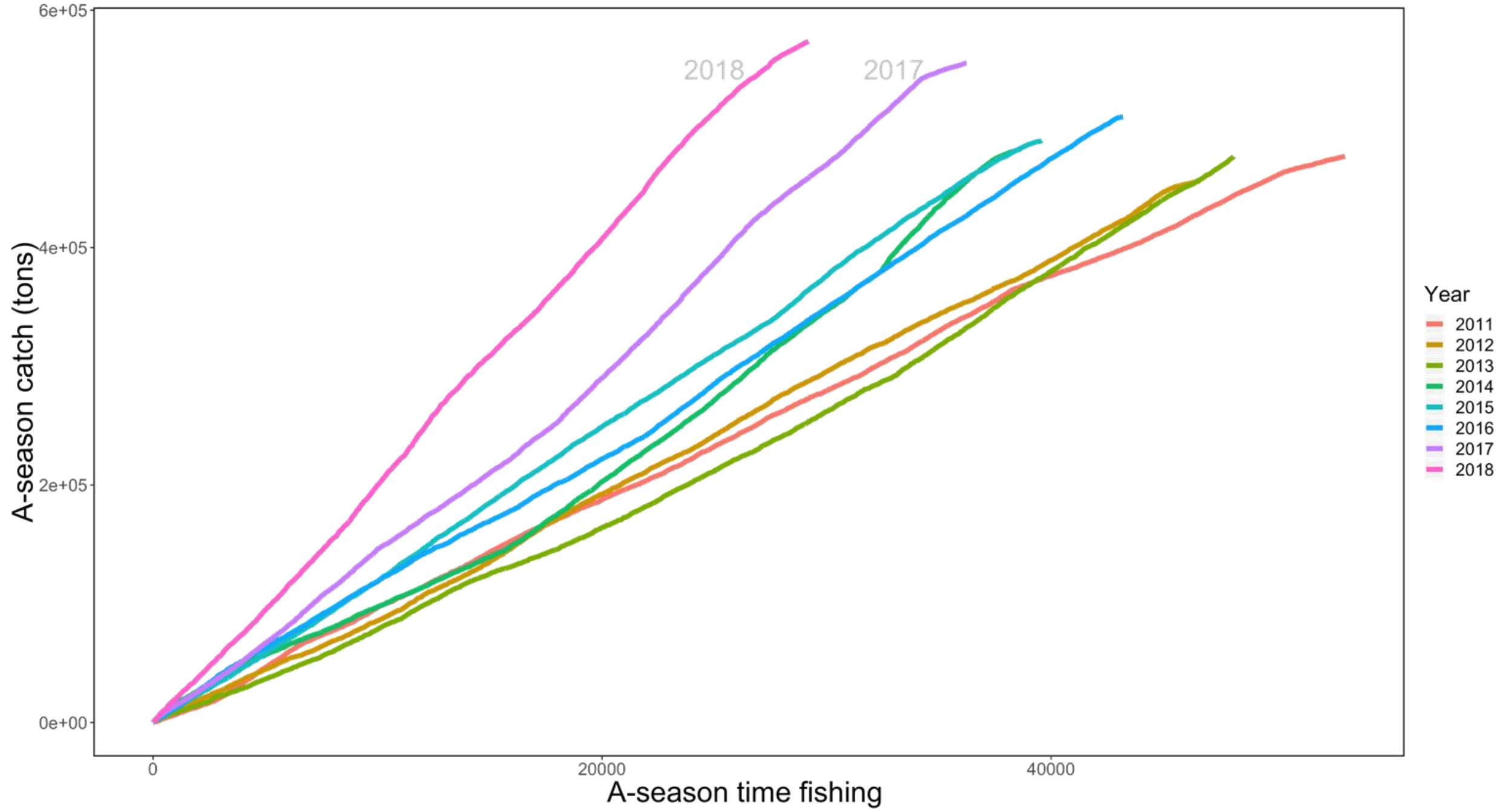
Alaska Fisheries Science Center
NMFS/NOAA

Sept 2019

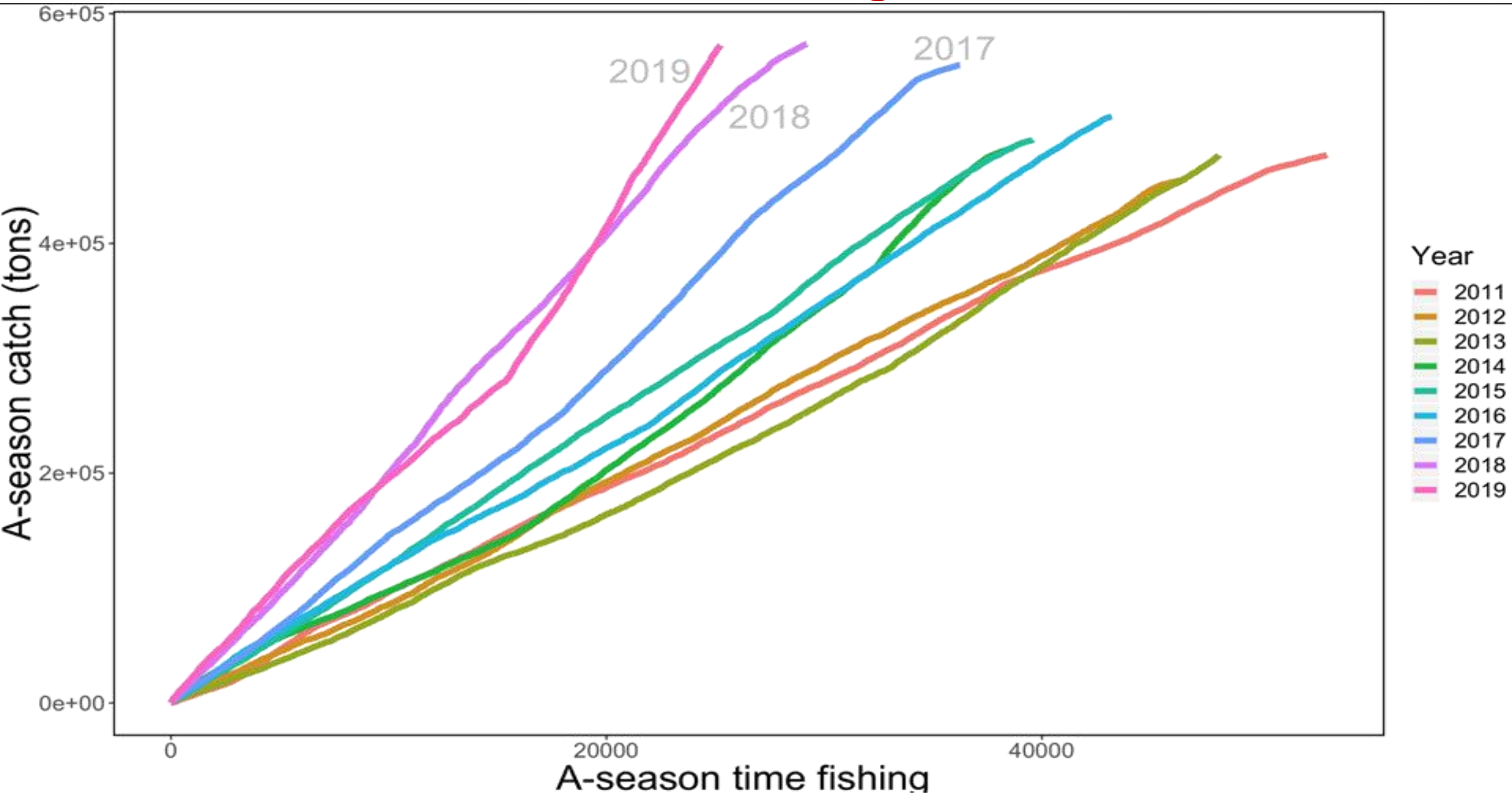
Plan Team

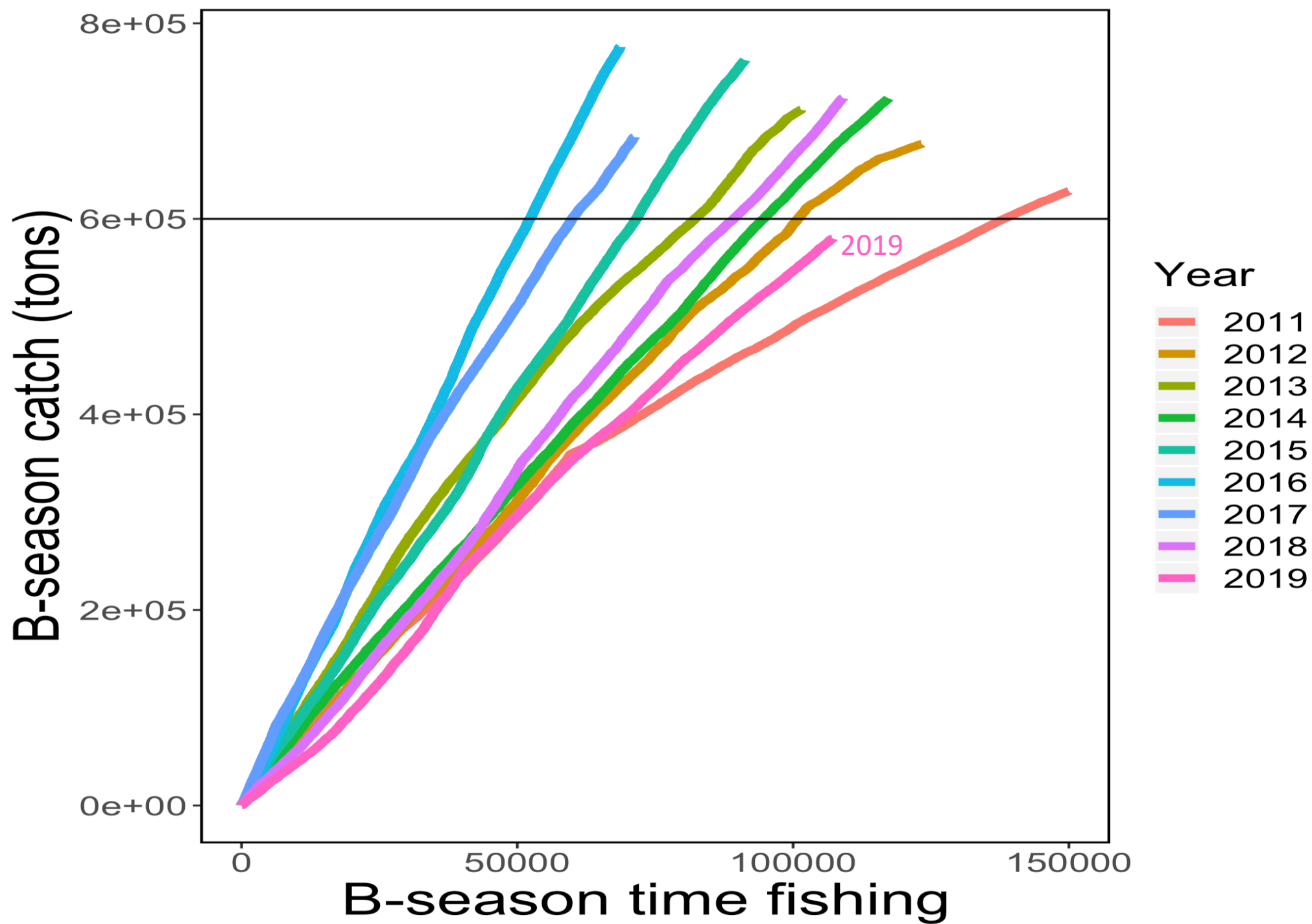


Winter fishing



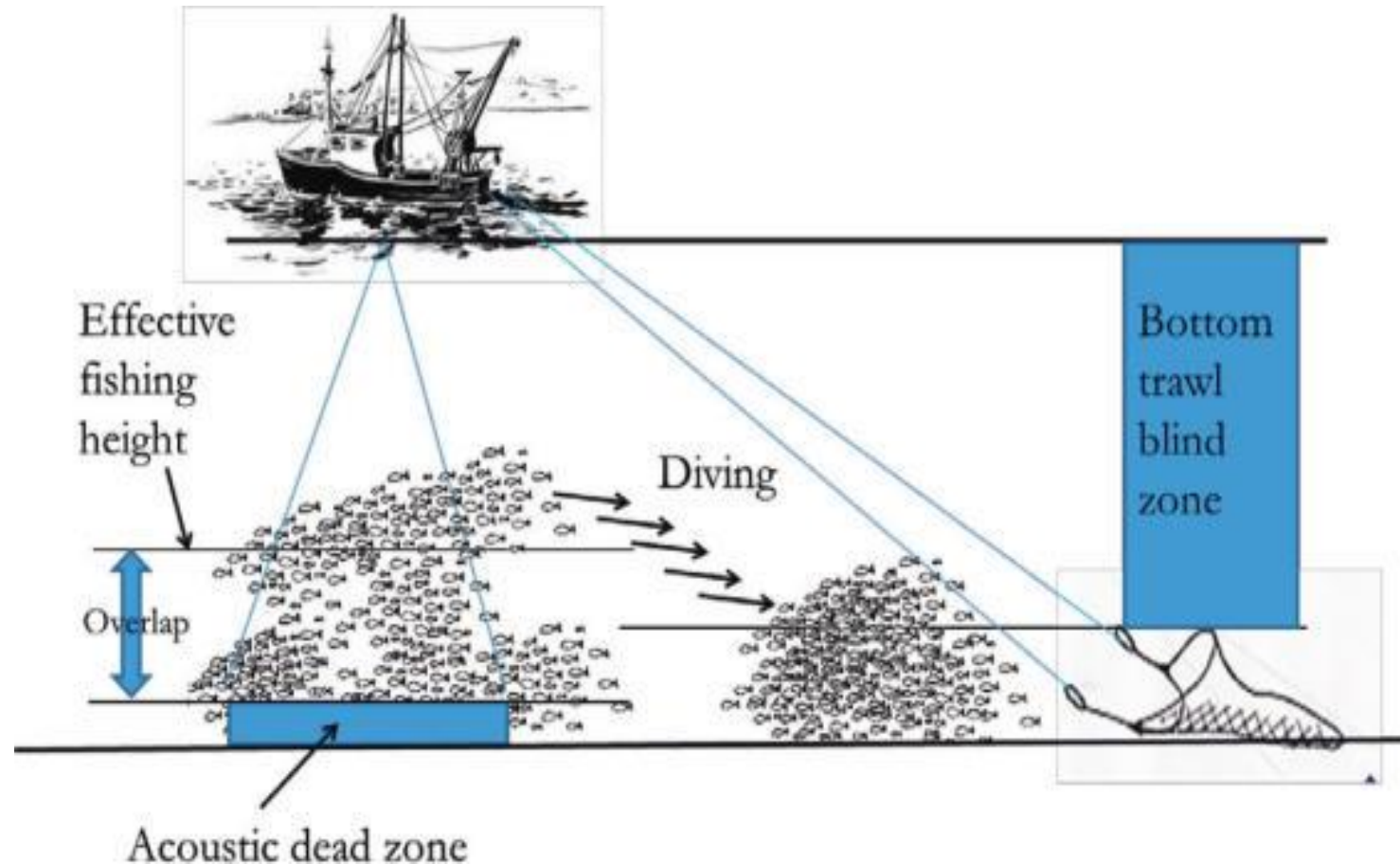
Winter fishing

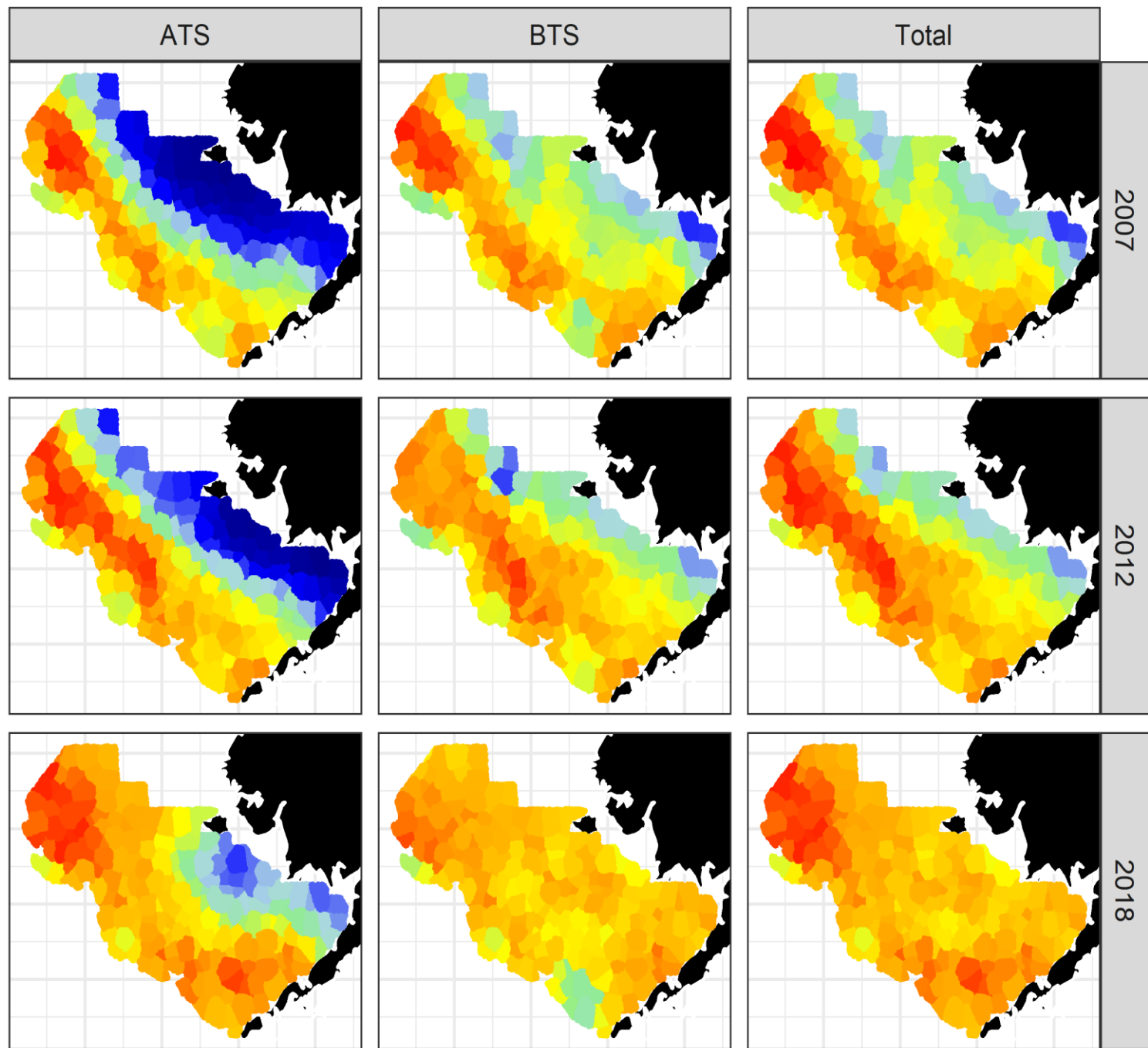


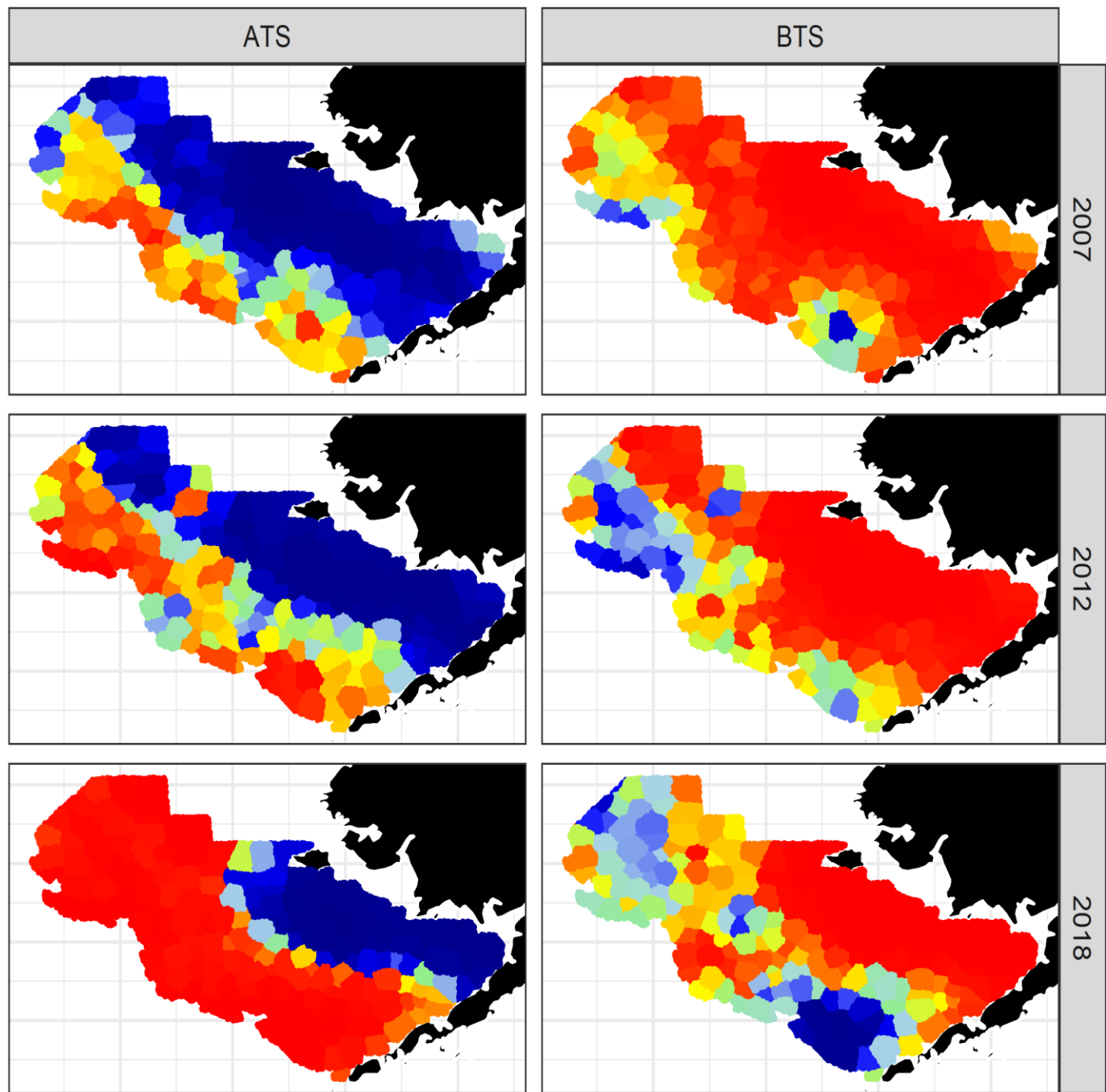


Acoustic and bottom trawl survey spatio-temporal modeling—Incorporating vertical distribution in index standardization

Cole Monnahan

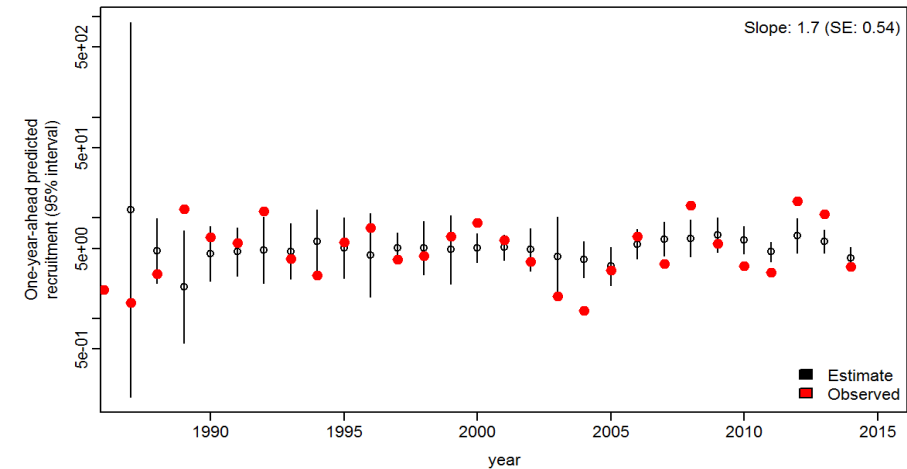
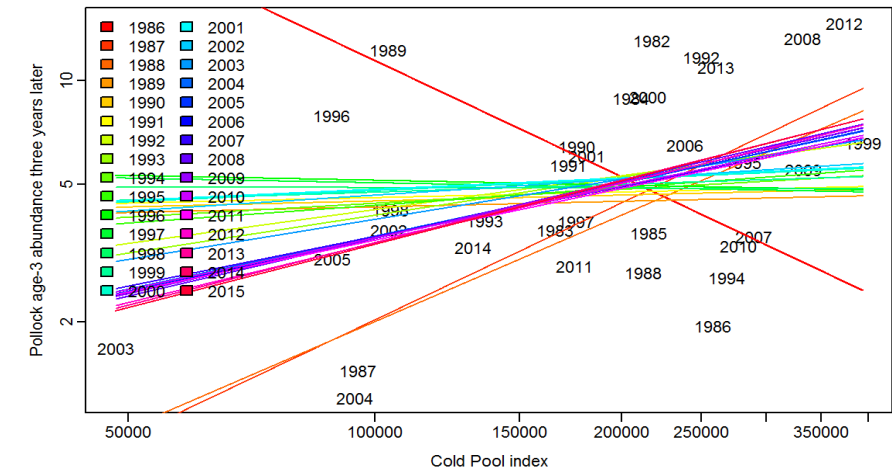
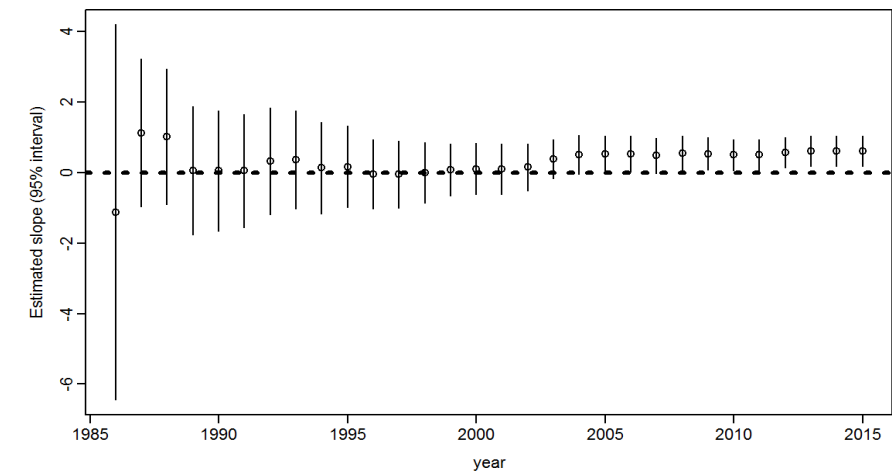






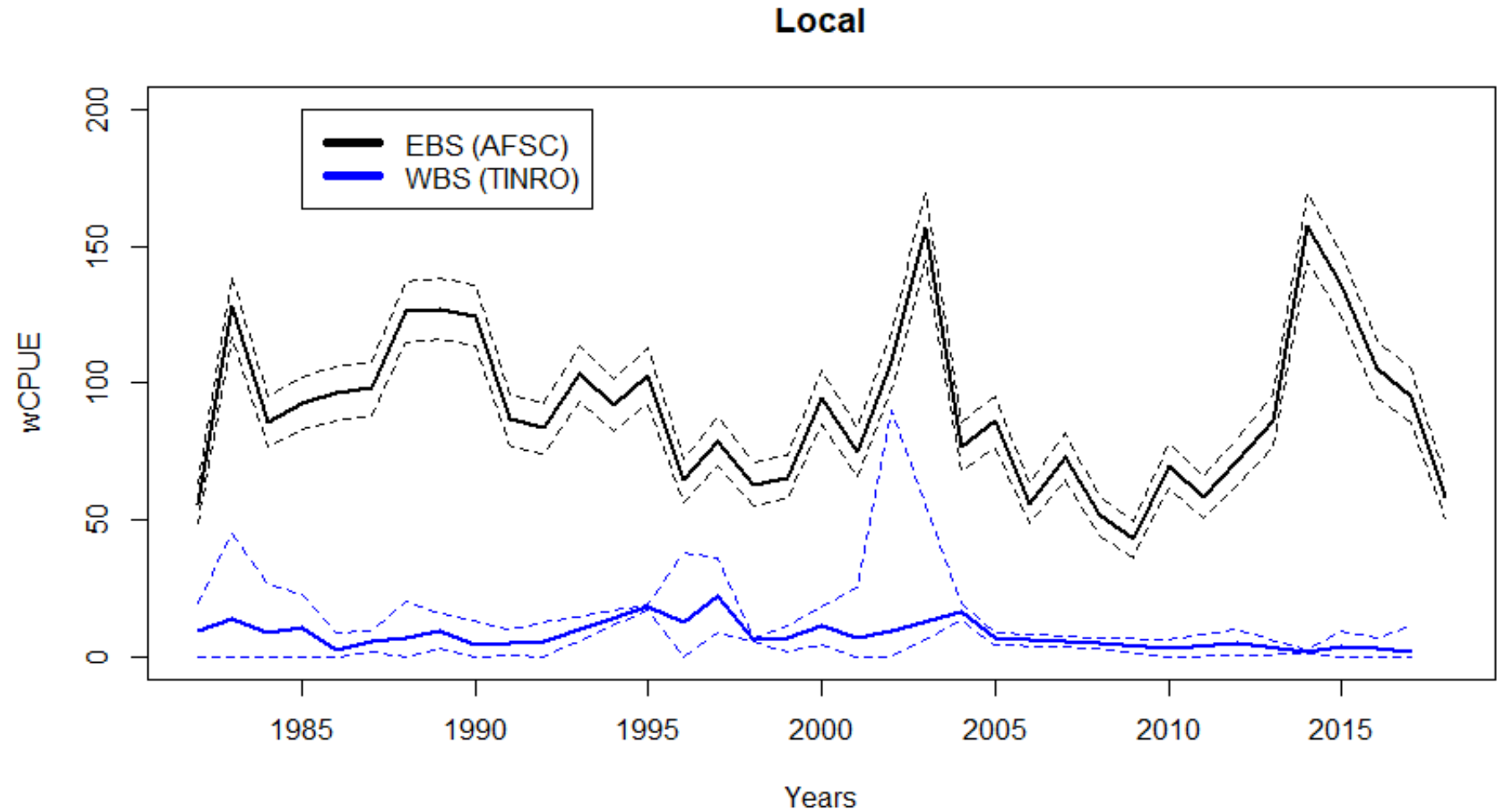
Developing environmental indices—retrospective analysis of zooplankton abundance in Bering Sea pollock stock recruitment models

E. Yasumiishi and others



Estimating groundfish spatio-temporal patterns

Cecilia O'leary, AFSC



Survey age-composition estimation consistent with spatiotemporal indices of abundance for use in stock assessment

Cecilia O'leary, AFSC

