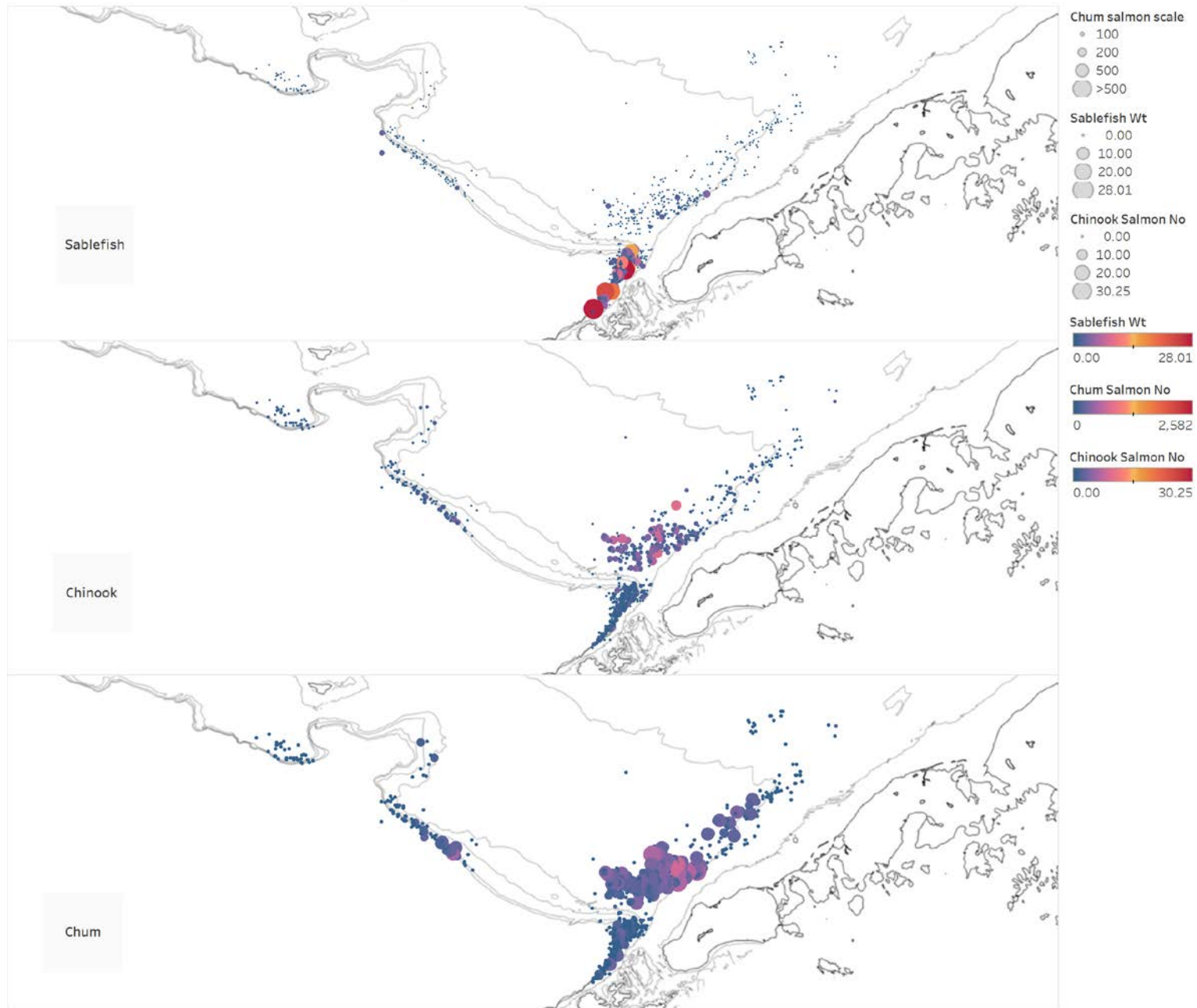


Sablefish bycatch in the CV pollock fishery, 2019 B season

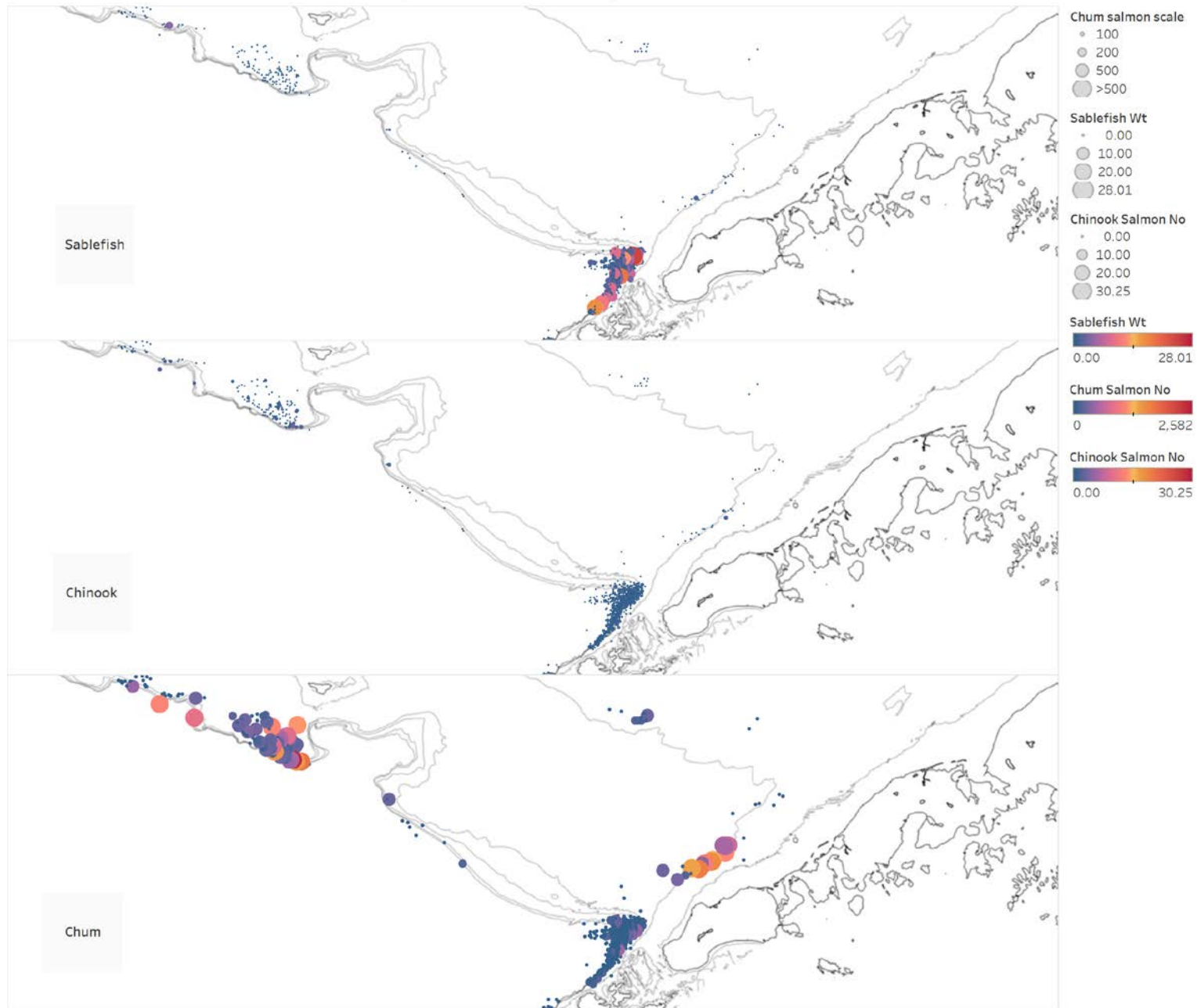
John Gruver (UCB) and Karl Haflinger (Sea State)

Sablefish, chum and chinook, shoreside pollock B season - June 2019



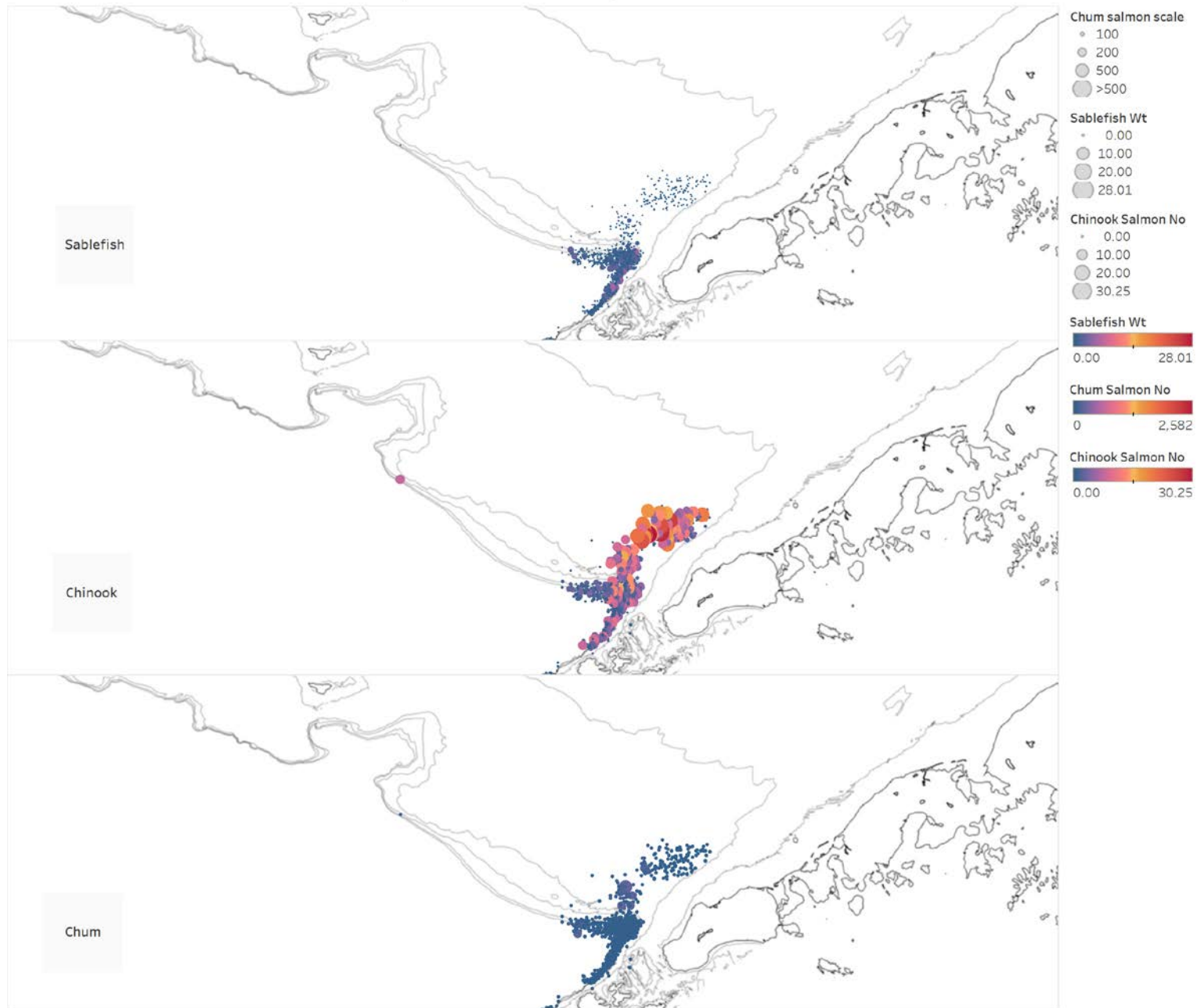
Map based on Longitude and Latitude, Latitude and Latitude. For pane Latitude (1): Color shows sum of Sablefish Wt. Size shows sum of Sablefish Wt. For pane Latitude (2): Color shows sum of Chinook Salmon No. Size shows sum of Chinook Salmon No. For pane Latitude (3): Color shows sum of Chum Salmon No. Size shows details about Chum salmon scale. The data is filtered on Yr, Vessel Type, Management Sector and Haul Date. The Yr filter ranges from 2019 to 2019. The Vessel Type filter keeps CV. The Management Sector filter keeps AFA CV Directed Pollock. The Haul Date filter ranges from 6/1/2019 12:00:00 AM to 10/28/2019 12:00:00 AM.

Sablefish, chum and chinook, shoreside pollock B season - July 2019



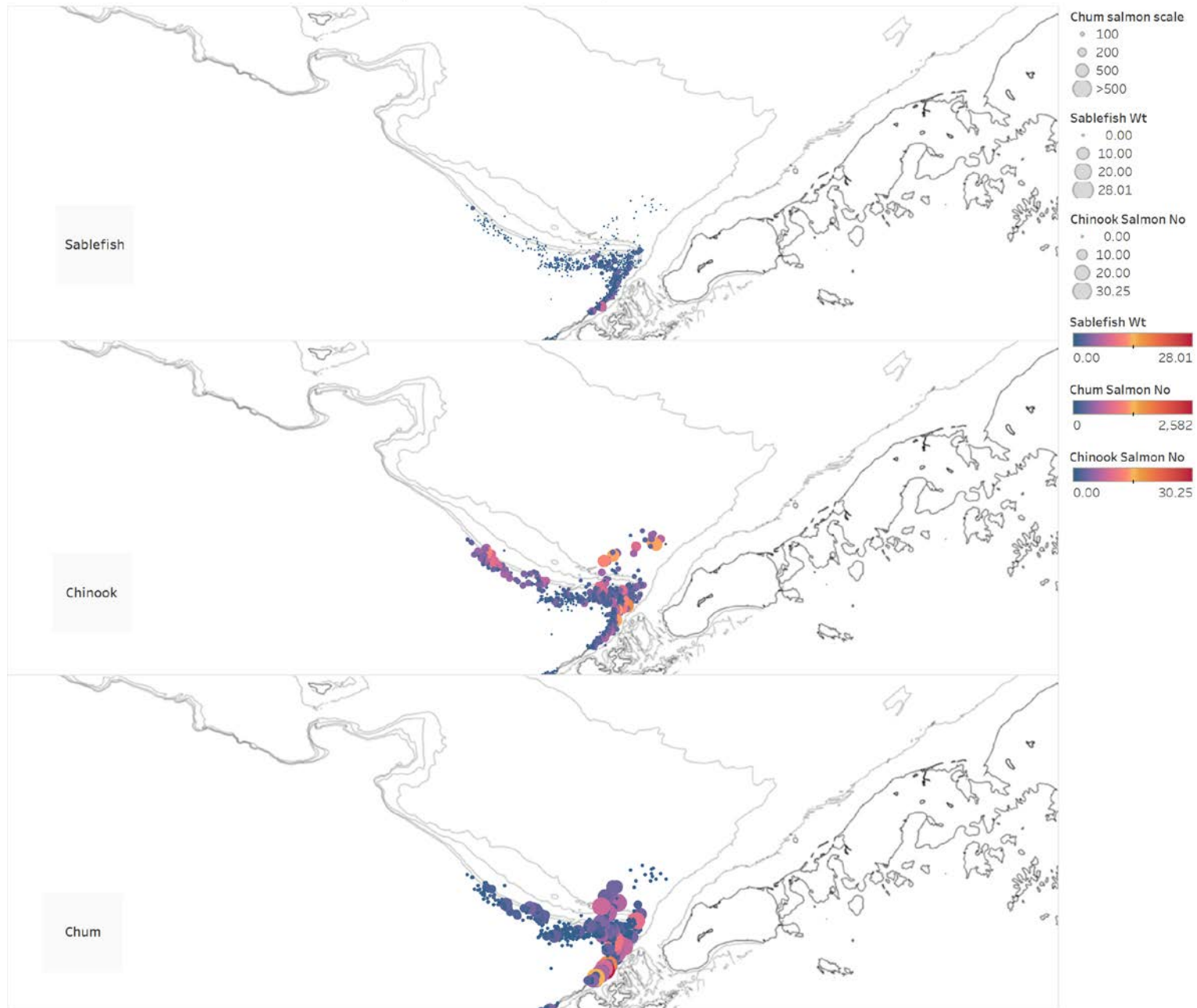
Map based on Longitude and Latitude, Latitude and Latitude. For pane Latitude (1): Color shows sum of Sablefish Wt. Size shows sum of Sablefish Wt. For pane Latitude (2): Color shows sum of Chinook Salmon No. Size shows sum of Chinook Salmon No. For pane Latitude (3): Color shows sum of Chum Salmon No. Size shows details about Chum salmon scale. The data is filtered on Yr, Vessel Type, Management Sector and Haul Date. The Yr filter ranges from 2019 to 2019. The Vessel Type filter keeps CV. The Management Sector filter keeps AFA CV Directed Pollock. The Haul Date filter ranges from 6/1/2019 12:00:00 AM to 10/28/2019 12:00:00 AM.

Sablefish, chum and chinook, shoreside pollock B season - August 2019



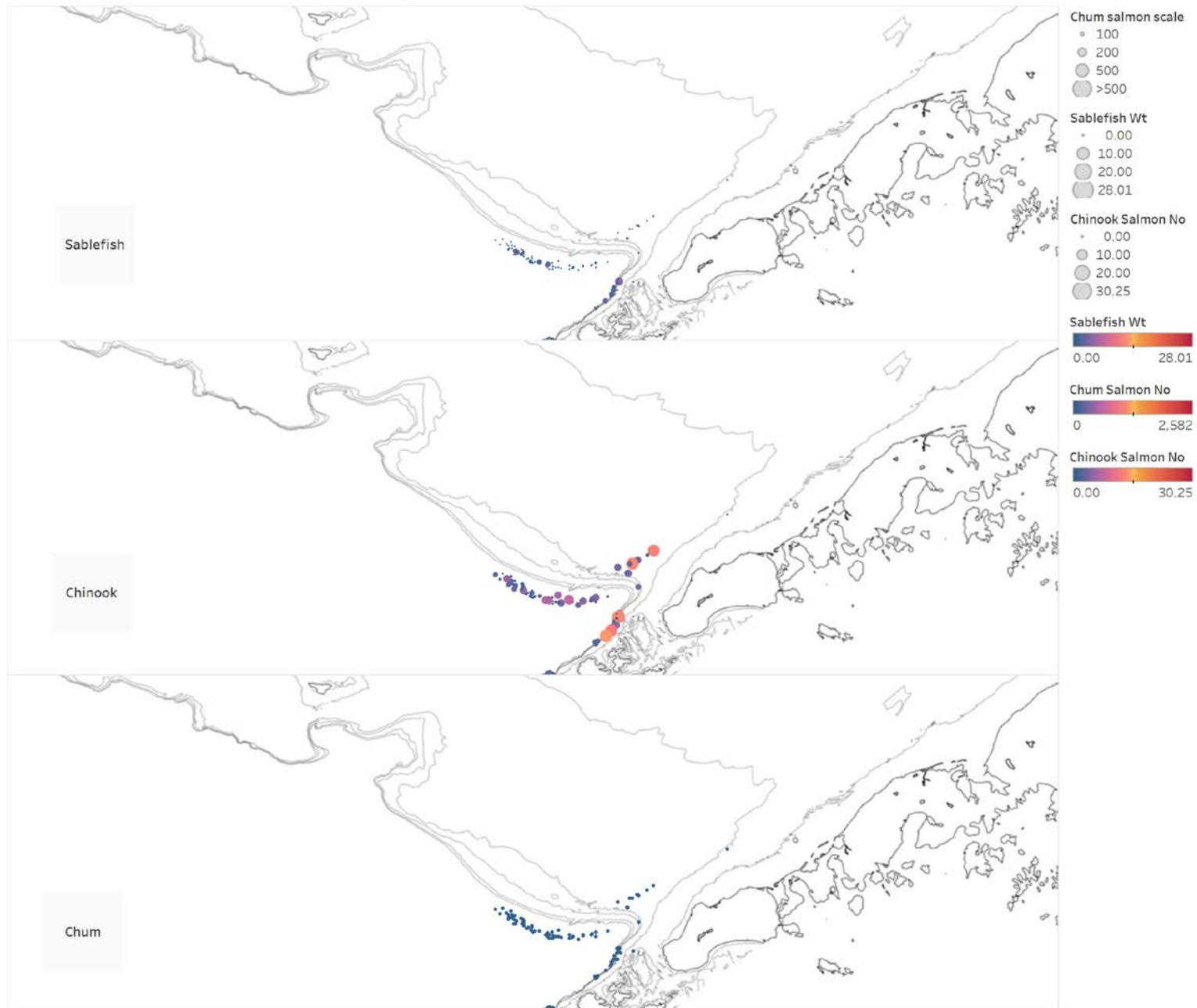
Map based on Longitude and Latitude, Latitude and Latitude. For pane Latitude (1): Color shows sum of Sablefish Wt. Size shows sum of Sablefish Wt. For pane Latitude (2): Color shows sum of Chinook Salmon No. Size shows sum of Chinook Salmon No. For pane Latitude (3): Color shows sum of Chum Salmon No. Size shows details about Chum salmon scale. The data is filtered on Yr, Vessel Type, Management Sector and Haul Date. The Yr filter ranges from 2019 to 2019. The Vessel Type filter keeps CV. The Management Sector filter keeps AFA CV Directed Pollock. The Haul Date filter ranges from 6/1/2019 12:00:00 AM to 10/28/2019 12:00:00 AM.

Sablefish, chum and chinook, shoreside pollock B season - September 2019



Map based on Longitude and Latitude, Latitude and Latitude. For pane Latitude (1): Color shows sum of Sablefish Wt. Size shows sum of Sablefish Wt. For pane Latitude (2): Color shows sum of Chinook Salmon No. Size shows sum of Chinook Salmon No. For pane Latitude (3): Color shows sum of Chum Salmon No. Size shows details about Chum salmon scale. The data is filtered on Yr, Vessel Type, Management Sector and Haul Date. The Yr filter ranges from 2019 to 2019. The Vessel Type filter keeps CV. The Management Sector filter keeps AFA CV Directed Pollock. The Haul Date filter ranges from 6/1/2019 12:00:00 AM to 10/28/2019 12:00:00 AM.

Sablefish, chum and chinook, shoreside pollock B season - October 2019



Map based on Longitude and Latitude, Latitude and Latitude. For pane Latitude (1): Color shows sum of Sablefish Wt. Size shows sum of Sablefish Wt. For pane Latitude (2): Color shows sum of Chinook Salmon No. Size shows sum of Chinook Salmon No. For pane Latitude (3): Color shows sum of Chum Salmon No. Size shows details about Chum salmon scale. The data is filtered on Yr, Vessel Type, Management Sector and Haul Date. The Yr filter ranges from 2019 to 2019. The Vessel Type filter keeps CV. The Management Sector filter keeps AFA CV Directed Pollock. The Haul Date filter ranges from 6/1/2019 12:00:00 AM to 10/28/2019 12:00:00 AM.

Addition of sablefish to “most recent delivery” bycatch information

<u>Coop</u>	<u>Vessel</u>	<u>Most Recent Landing Date</u>	<u>Most Recent Chinook Catch</u>	<u>Most Recent Chum Catch</u>
Akutan	ALDEBARAN	10/09/2019	12	13
Akutan	ARCTIC EXPLORER	09/01/2019	1	127
Akutan	ARCTIC RAM	08/31/2019	5	17
Akutan	ARCTIC WIND (AMEND 69)	08/15/2019	0	2
Akutan	ARCTURUS	09/23/2019	1	15
Akutan	BRISTOL EXPLORER	08/05/2019	0	1
Akutan	COLUMBIA	10/13/2019	3	12
Akutan	DOMINATOR	09/29/2019	3	25
Akutan	EXCALIBUR II	08/20/2019	5	5
Akutan	GLADIATOR	10/13/2019	6	5
Akutan	GOLDEN DAWN	09/27/2019	13	118
Akutan	GOLDEN PISCES	10/07/2019	20	8
Akutan	LESLIE LEE	09/05/2019	0	6

Typical reporting email (this from the recent whiting fishery) generated 2x daily by Sea State automated processing. Clicking on links leads to VMS tracks picture.

reporting@seastateinc.com

Thu, Oct 10, 3:01 AM

to me

This message was generated on 10/10/2019 at 2:01 AM

All high bycatch trips: <https://acct.seastateinc.com/Seastate/Members/AfaCvPollockMap.aspx>

Landing 352 on 10/9/2019 has a Chinook Salmon rate of 11/100 MT of Pollock. This is 2.2 x the alarm threshold of 5/100 MT.

Stat Areas: 655409

Haulbacks:

54 26 N,165 40 W 10/7/2019 10:27:00 PM

54 24 N,165 44 W 10/8/2019 3:42:00 PM

VMS track: <https://acct.seastateinc.com/Seastate/Members/AfaCvPollockMap.aspx?alarmId=2726&alarmIdHash=d532d5274c83bc00fda48c3a51d15e49>

Landing 353 on 10/9/2019 has a Chinook Salmon rate of 11/100 MT of Pollock. This is 2.2 x the alarm threshold of 5/100 MT.

Stat Areas: 655409

Haulbacks:

54 32 N,165 34 W 10/7/2019 6:20:00 PM

54 27 N,165 39 W 10/8/2019 9:45:00 AM

VMS track: <https://acct.seastateinc.com/Seastate/Members/AfaCvPollockMap.aspx?alarmId=2727&alarmIdHash=2ae34b458c3f834ae015e33144e5598b>

Landing 354 on 10/9/2019 has a Chinook Salmon rate of 5/100 MT of Pollock. This is 1.1 x the alarm threshold of 5/100 MT.

Stat Areas: 665430

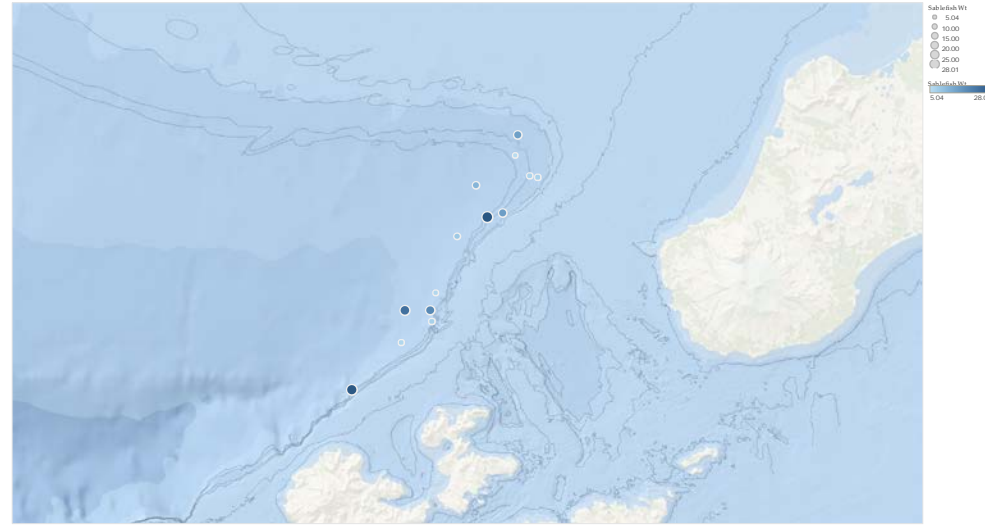
Haulbacks:

54 43 N,166 23 W 10/8/2019 2:31:00 AM

54 41 N,166 33 W 10/8/2019 2:17:00 PM

VMS track: <https://acct.seastateinc.com/Seastate/Members/AfaCvPollockMap.aspx?alarmId=2728&alarmIdHash=fd9c09639f9aa85392678edbec4d54d8>

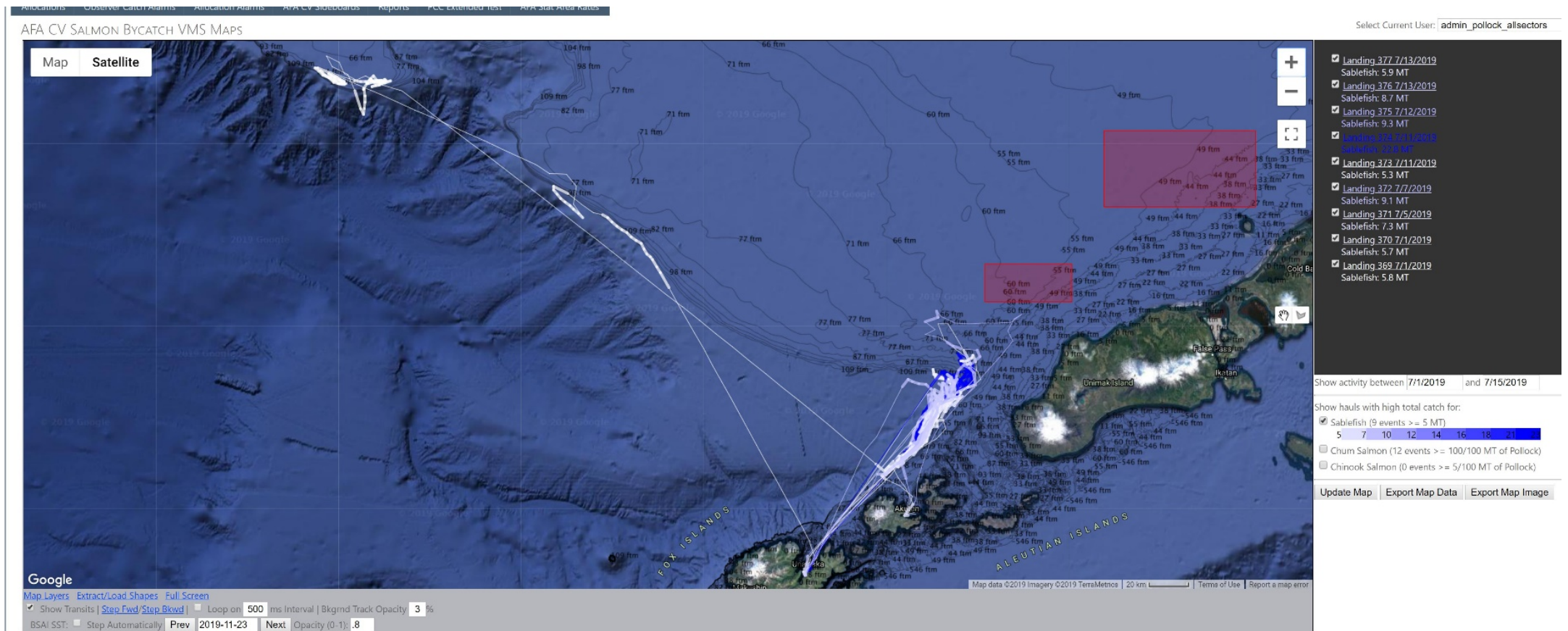
Sablefish warning map - June



Map based on Longitude and Latitude. Color shows sum of Sablefish Wt. Size shows sum of Sablefish Wt. The data is filtered on Haul Date Year, Vessel Type, Haul Date, Gear Code and Sablefish Wt. The Haul Date Year filter keeps 2019. The Vessel Type filter keeps CV. The Haul Date filter ranges from 6/1/2019 12:00:00 AM to 6/30/2019 12:00:00 AM. The Gear Code filter keeps PIR. The Sablefish Wt filter ranges from 5 to 28.0194.

Maps showing haul locations for sablefish tows in excess of 5 mt will be appended to the weekly salmon reports.

VMS tracks for warnings for sablefish for the early July pollock B fishery. Red boxes are past or current chum bycatch closures. Tracks for chum and chinook warnings have been disabled for clarity (see checkboxes to the right).



VMS tracks for warnings from the pollock fishery in July and early August showing areas of chinook, chum and sablefish bycatch.

