

Fishery Performance and Community Information for 2020 Stock Assessments



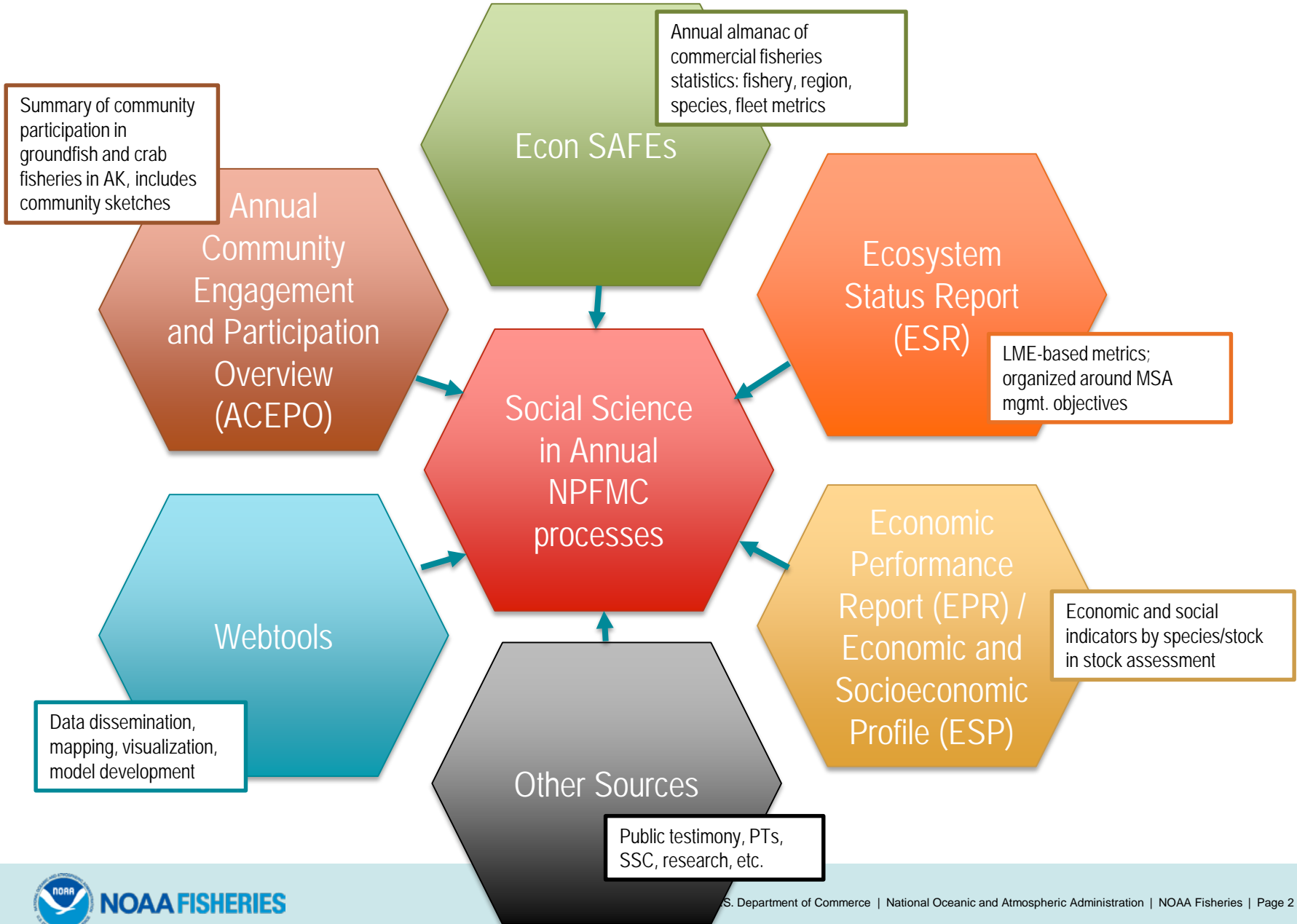
Alaska Fisheries
Science Center

Steve Kasperski*
Alaska Fisheries Science Center

September 8, 2020
Joint Groundfish Plan Team Meeting

* All opinions expressed are my own and do not represent those of the NMFS

AFSC providing social science info into Annual NPFMC processes



Economic Performance Reports (EPR) and Ecosystem and Socio-economic Profiles (ESP)

BSAI EPRs (4)	GOA EPRs (2)	ESPs (6)
<ul style="list-style-type: none">• Pollock• Flatfish complex• Rockfish complex• Atka mackerel	<ul style="list-style-type: none">• Flatfish complex• Rockfish complex	<ul style="list-style-type: none">• GOA Pollock• Sablefish• St. Matthews Blue King Crab• Red King Crab• GOA p. cod• BSAI p.cod

- EPRs provide a short (3-5 page) species and region specific economic reports for the stock assessments of species (complexes) with substantial commercial fisheries.
 - Provide a summary of key economic data covering three broad market categories: ex-vessel, first wholesale, and global markets.
 - Narrative and context for the state of markets.
- ESP socio-economic section are built off of original EPRs but revise the economic sections and includes more of a community focus.

Organizing framework for ESRs nationally (MAFMC/NEFSC-led): MSA objectives mapped to specific indicators



Program Contacts: Econ SAFEs and ACEPO

Groundfish



Ben Fissel



Brian Garber-Yonts

Crab

Social science and
communities, ACEPO



Sarah Wise

Where to find?:

At this landing page eventually:

<https://www.fisheries.noaa.gov/alaska/ecosystems/economic-status-reports-gulf-alaska-and-bering-sea-aleutian-islands>

AKFIN and data



Jean Lee



Program Contacts: Ecosystem Status Report (ESR) contributors



Ben Fissel

Landings
volume,
value,
and unit
value

School
enrollment,
subsistence
activities



Sarah Wise

Where to find?:

Each contribution is LME-specific, and regional reports are eventually housed:

<https://access.afsc.noaa.gov/REFM/REEM/ecoweb/index.php>

Discards



Jean Lee



Melissa Rhodes-Reese (Juneau)

Population
trends,
unemployment

Program Contacts: Economic Performance Reports (EPRs)

Sablefish (in ESP),
GOA P.cod (in ESP),
BSAI P.cod (in ESP),
GOA Pollock (in ESP),
Atka mackerel,
BSAI Pollock,
GOA flatfish,
BSAI flatfish,
GOA rockfish, &
BSAI rockfish



Ben Fissel

Where to find?:

Included within the text of the stock assessment or as an appendix. Most recent either on the [PT drafts website](#), NPFMC site, or at this landing page eventually:

<https://www.fisheries.noaa.gov/alaska/population-assessments/north-pacific-groundfish-stock-assessment-and-fishery-evaluation>



Program Contacts: ESPs

ESP co-PI,
Sablefish, GOA
pollock, BSAI and
GOA Cod



Ben Fissel



Brian Garber-Yonts

St. Matts
BKC, RKC



Alan Haynie

BSAI PT,
SEASAW
organizer



Steve Kasperski

Keeping
acronyms
straight
(also IEAs)

GOA PT,
SEASAW
participant



Marysia Szymkowiak
(Juneau)



Sarah Wise

Community
contributions

Where to find? (2019 versions):

Should be included as an appendix to the stock assessment, may be hard to find.

Sablefish (p. 157): https://archive.fisheries.noaa.gov/afsc/refm/stocks/plan_team/2019/sablefish.pdf

GOA pollock: https://meetings.npfmc.org/CommentReview/DownloadFile?p=caaa62af-89e7-4ba7-97a2-f3c06066bc57.pdf&fileName=GOA_Pollock_ESP_Sept_2019.pdf

St. Matthews Blue King Crab (p.99): <https://meetings.npfmc.org/CommentReview/DownloadFile?p=6ffde3ce-67be-4139-b165-cbff9062da06.pdf&fileName=C4%206%20SMBKC%20SAFE%202019.pdf>



Program Contacts: Web Development



Ben Fissel

Pacific States E-journal of
Scientific Visualizations
(PSESV) co-editor

MRSAM
webtool



Chang Seung

Snapshots,
Profiles,
web
mapping



Sarah Wise

Where to find?:

ESSR main landing page:

<https://www.fisheries.noaa.gov/alaska/socioeconomics/alaska-economic-and-social-sciences-research>

Data and ESSR
webmaster,
PSESV



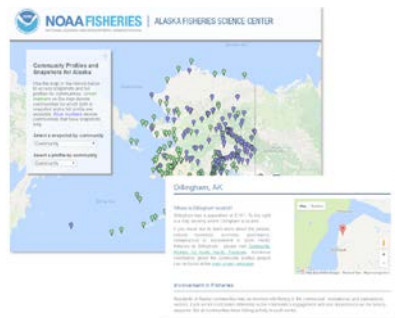
Jean Lee



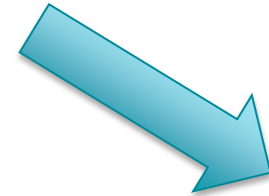
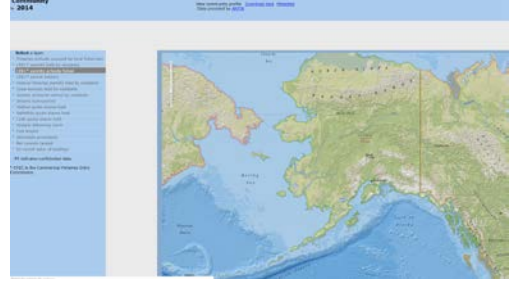
New Fishing Communities of Alaska website in development



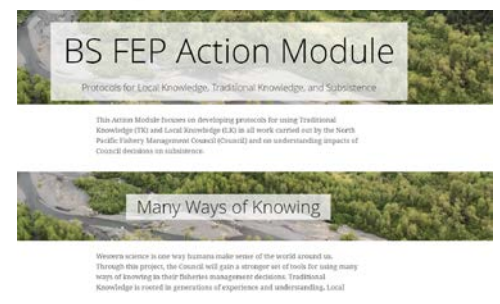
Updated Snapshots



Data mapping, integrated by PSMFC



Story maps/FEP integration



Organizing framework for ESRs nationally (MAFMC/NEFSC-led): MSA objectives mapped to specific indicators



Seafood Provisioning Indicators

- % Utilization (CSPM)
- Aggregate landings (SAFE)
- Catch (SAFE)
- Economic Indicators by eco-region – Landings (ESR)
- FAO global production (SAFE)
- First-wholesale production (SAFE)
- International trade volume and value (SAFE)
- Number of processors (SAFE)
- Quota allocated to Catch Share Program (CSPM)
- Salmon and Halibut Subsistence Trends by eco-region (ESR)
- Vessel characteristics (SAFE)

Commercial Profits Indicators

- Aggregate revenue from Catch Share species (CSPM)
- Average price (SAFE, ESPs)
- Economic Indicators by eco-region – Value and Unit Value (ESR)
- EDR data (SAFE)
- Ex-vessel price (SAFE)
- Ex-vessel value (SAFE)
- First-wholesale price (SAFE)
- First-wholesale value (SAFE)
- Gini Coefficient (CSPM)
- Revenue per active vessel (CSPM)
- Total roe per unit pollock catch (ESP)
- SMBKC % of total revenues (ESP)

Employment Indicators

- Crew weeks (SAFE)
- Fishing weeks (SAFE)
- Vessel counts and permits (SAFE, ESP)

Recreational Opportunities Indicators

- Saltwater Recreational Fishing by eco-region: Sport Fishing Harvest by functional group (no longer in ESR due to data lags)
- Saltwater Recreational Fishing Participation by eco-region: Number of anglers and fishing days (no longer in ESR due to data lags)

Community Resilience Indicators

- K–12 School Enrollment, Graduation and Dropout rates in Coastal Communities by eco-region (ESR)
- Trends in Human Population by eco-region (ESR)
- Trends in unemployment by eco-region (ESR)
- Community participation and engagement indices for groundfish and crab fisheries (formerly SAFE, now ACEPO)
- Community local quotients for Groundfish and crab fisheries (ACEPO)
- % GOA pollock landings in Kodiak (local quotient or LQ, ESP)
- % of SMBKC landings in St. Paul (local quotient or LQ, ESP)
- Number of active processors (ESP)

Fishery Sustainability Indicators

- Active vessels (CSPM)
- Entities holding share (CSPM)
- Season length index (CSPM)
- Discards and PSC (ESR)

Stability Indicators

- Real Effective Exchange rate index (SAFE Report Card)
- Alaska's effective share of global pollock and cod catch (SAFE Report Card)
- Production Volume/Total catch (SAFE Report Card)
- Ex-vessel share of first-wholesale revenue (SAFE Report Card)
- AK resident share of shoreside ex-vessel value (SAFE Report Card)
- Share of shoreside value to top 5 communities (SAFE Report Card)
- Real first-wholesale value/fishing weeks (~RPUE, SAFE Report Card)



Questions?

stephen.kasperski@noaa.gov