



ALASKA SABLEFISH

DANA HANSELMAN, CARA RODGVELLER, KARI FENSKE, KALEI
SHOTWELL, KATY ECHAVE, PAT MALECHA, CHRIS LUNSFORD

MARINE ECOLOGY AND STOCK ASSESSMENT

ALASKA FISHERIES SCIENCE CENTER

JUNEAU, AK

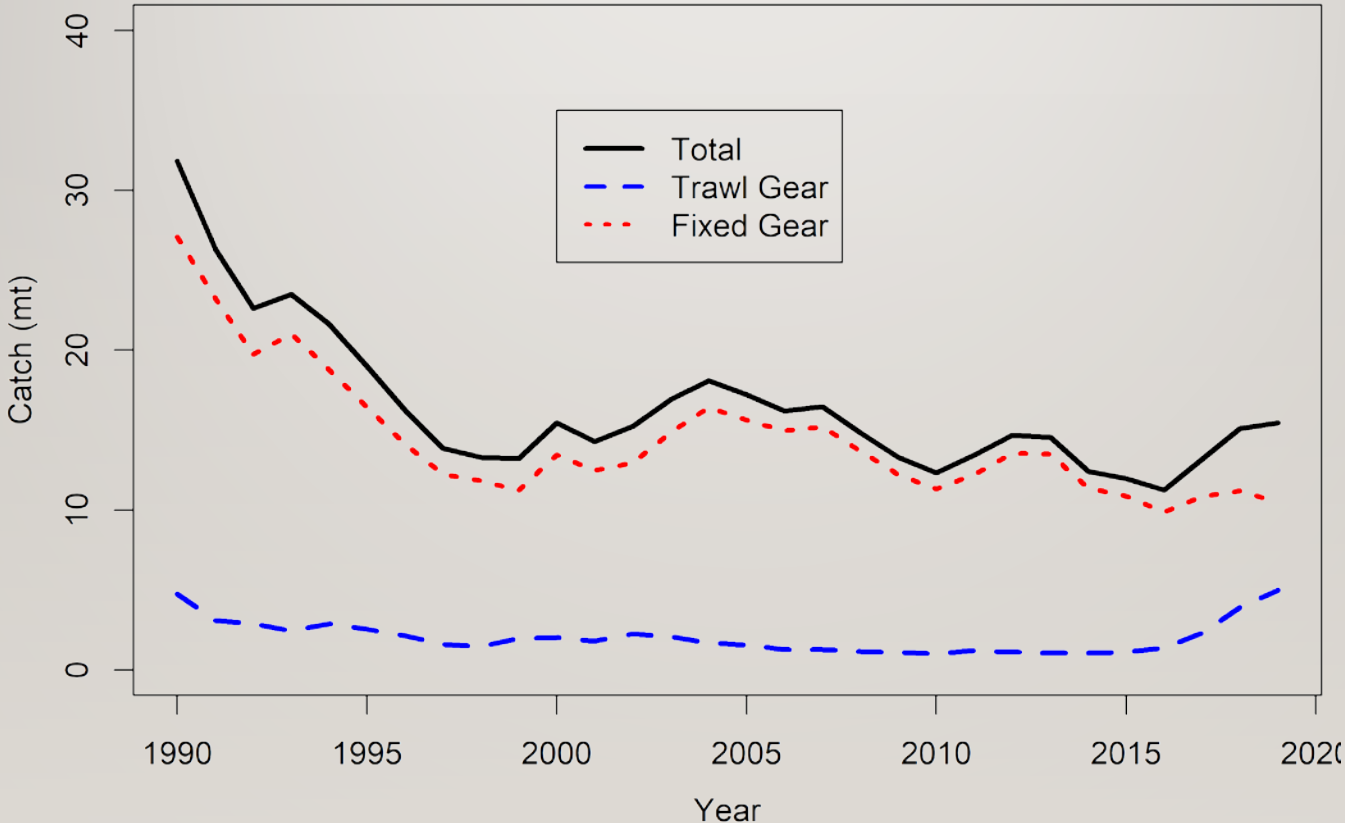


BOTTOM LINE

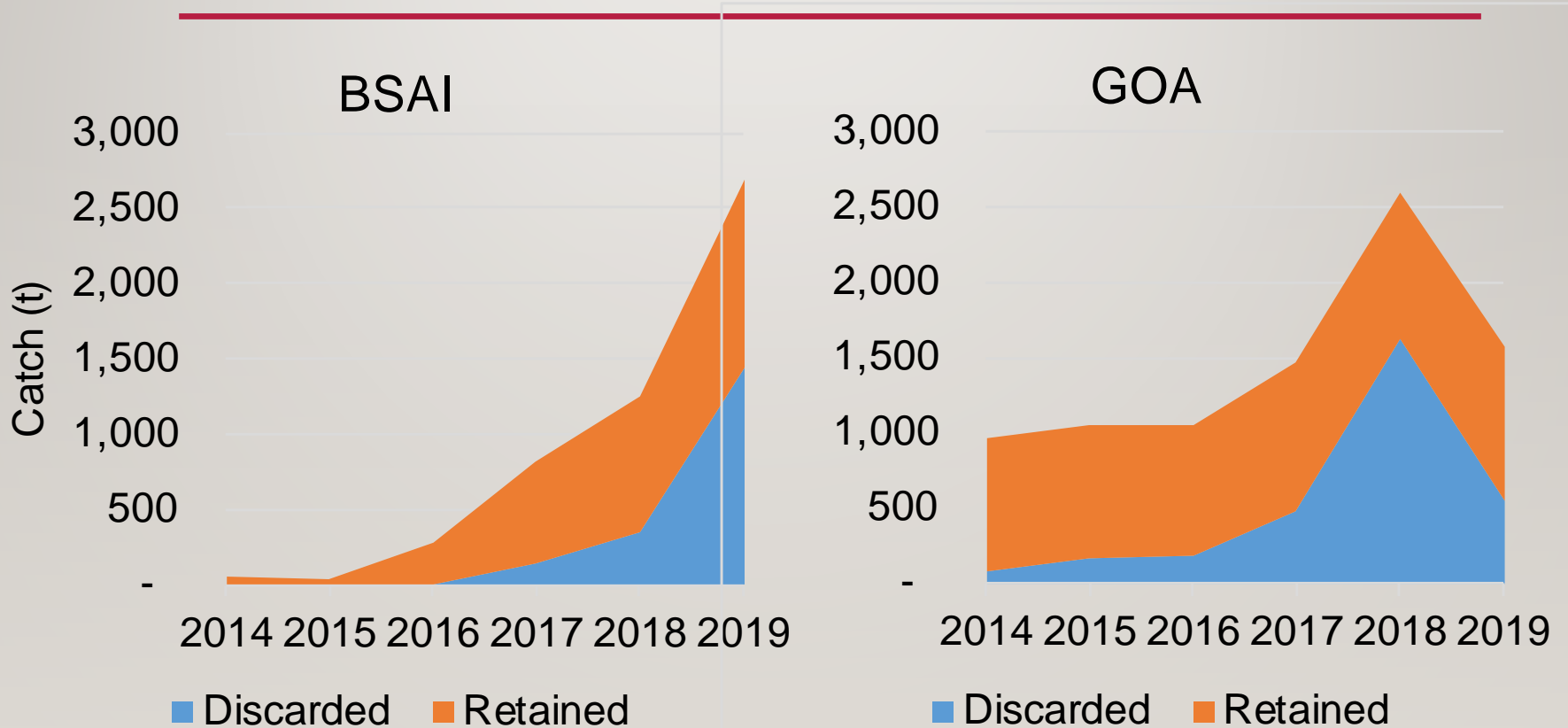
- Maximum permissible ABC way up
- Author's ABC 2020 > ABC 2019 (+25%)
- Author gave 12 reasons
why not the max ABC
- Risk-matrix approach
- Ecosystem and Socioeconomic Profile (ESP)



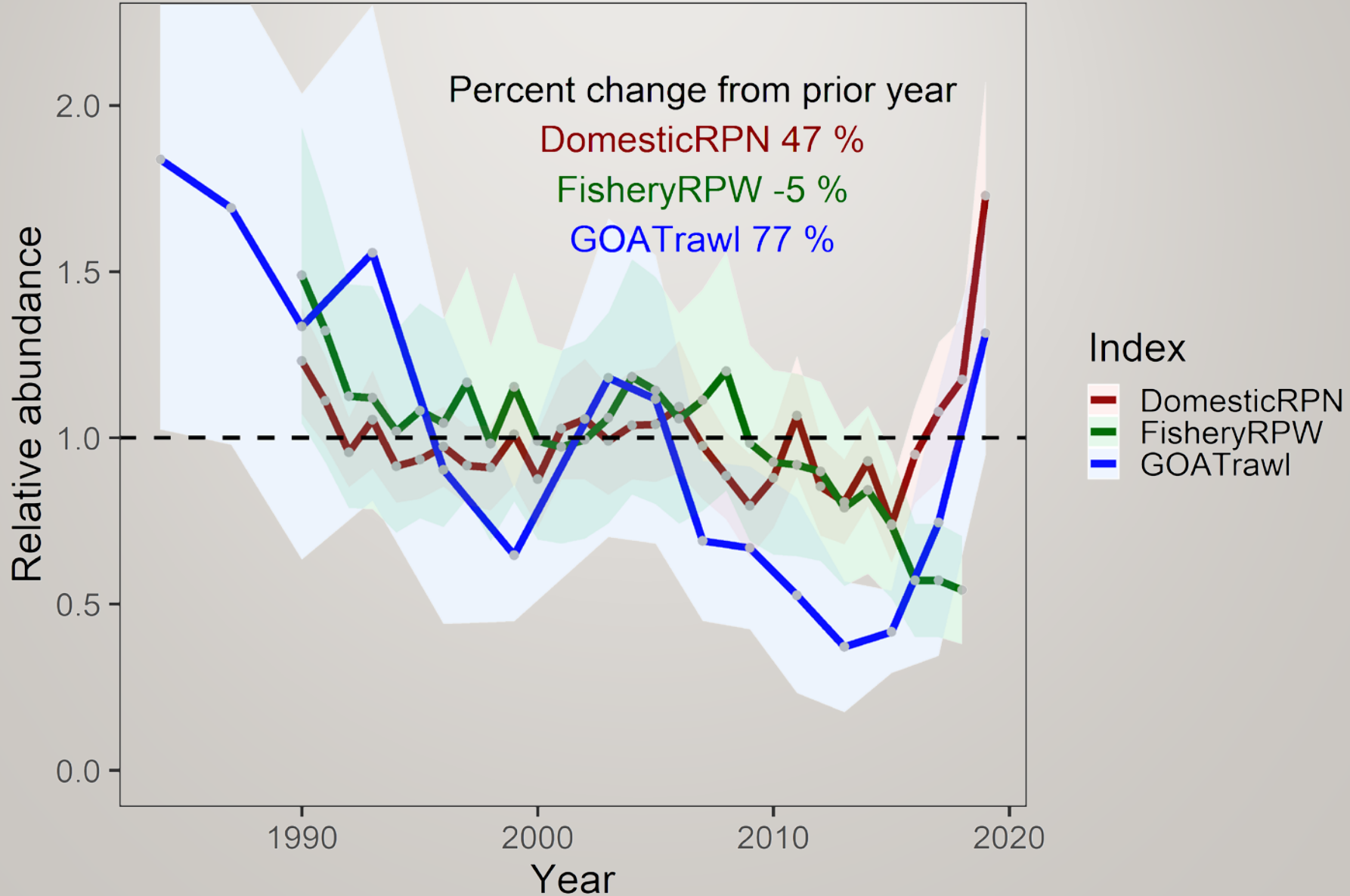
RECENT CATCHES



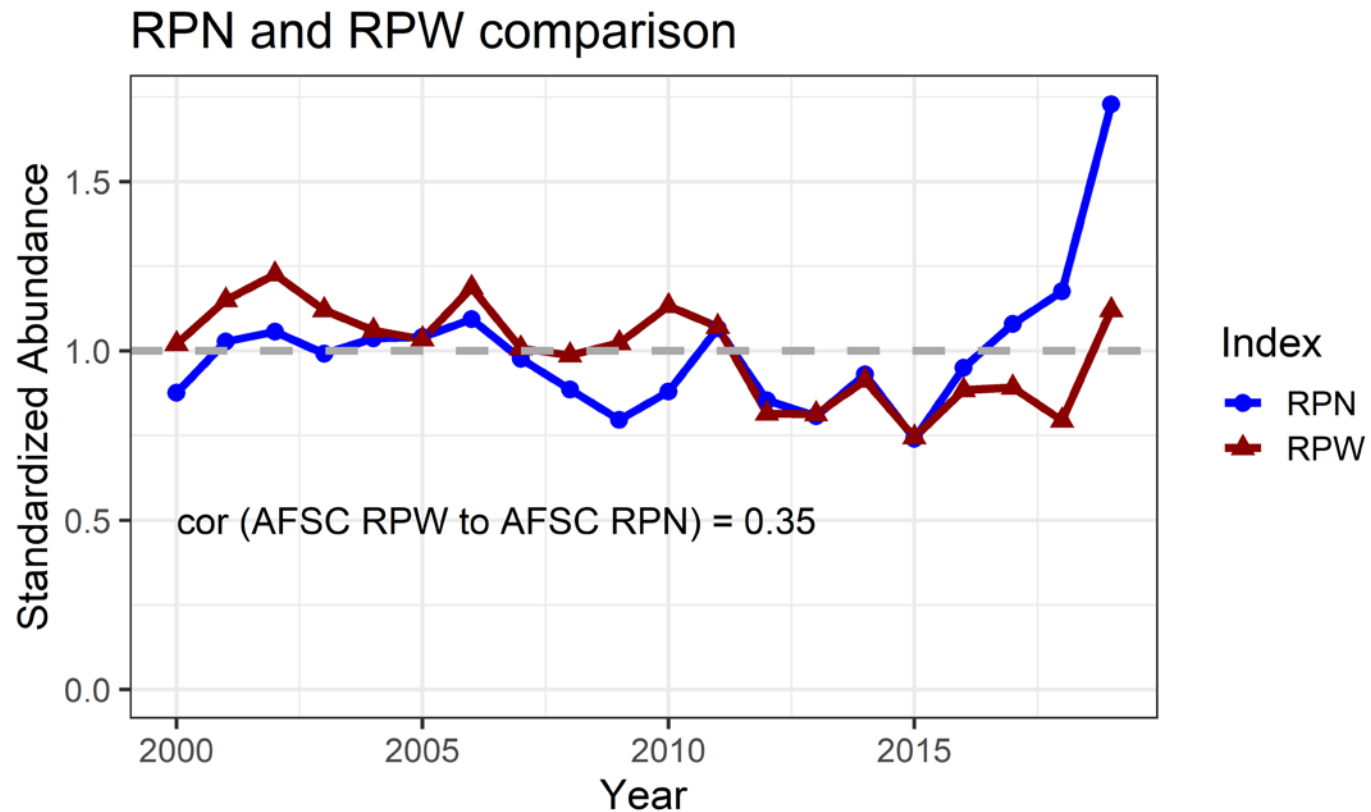
TRAWL CATCH AND DISCARDS



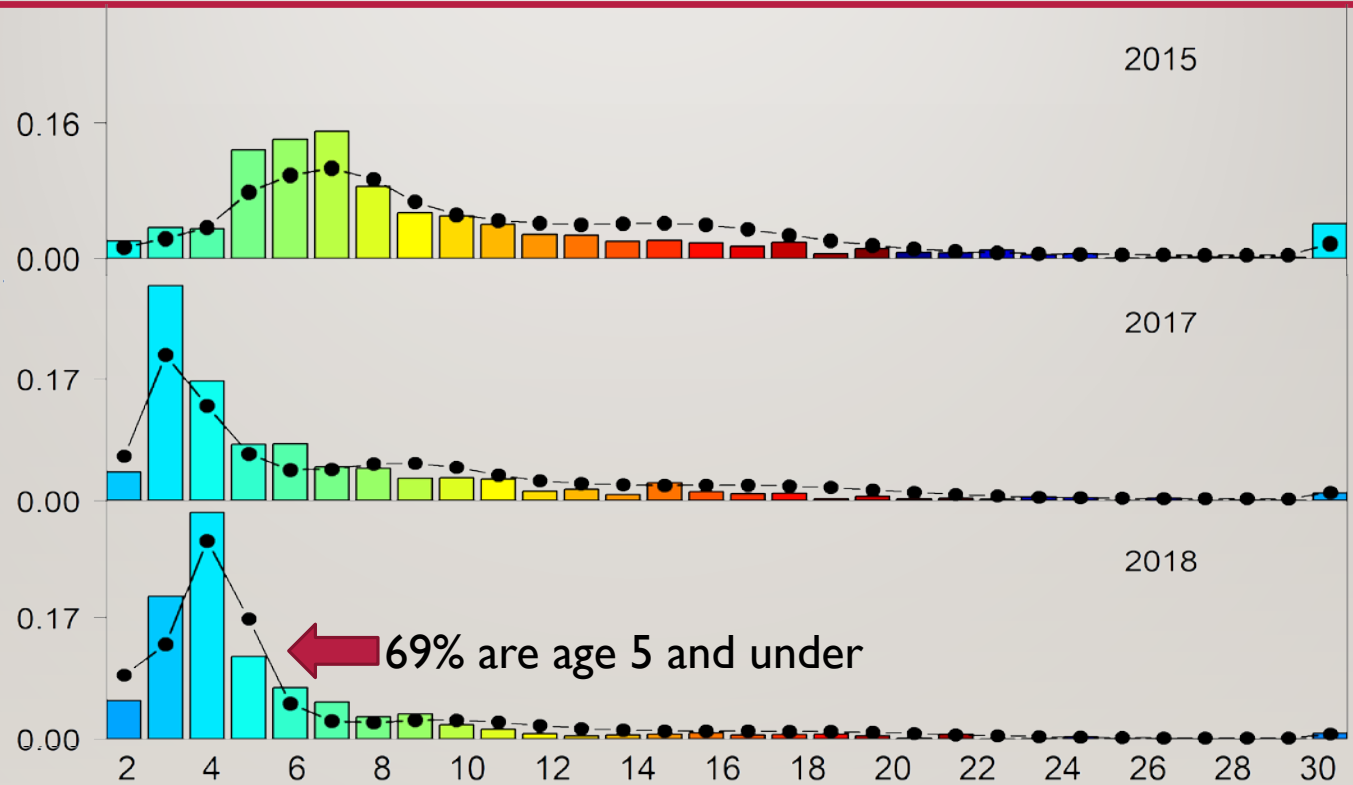
Indices in the model



Indices diverge

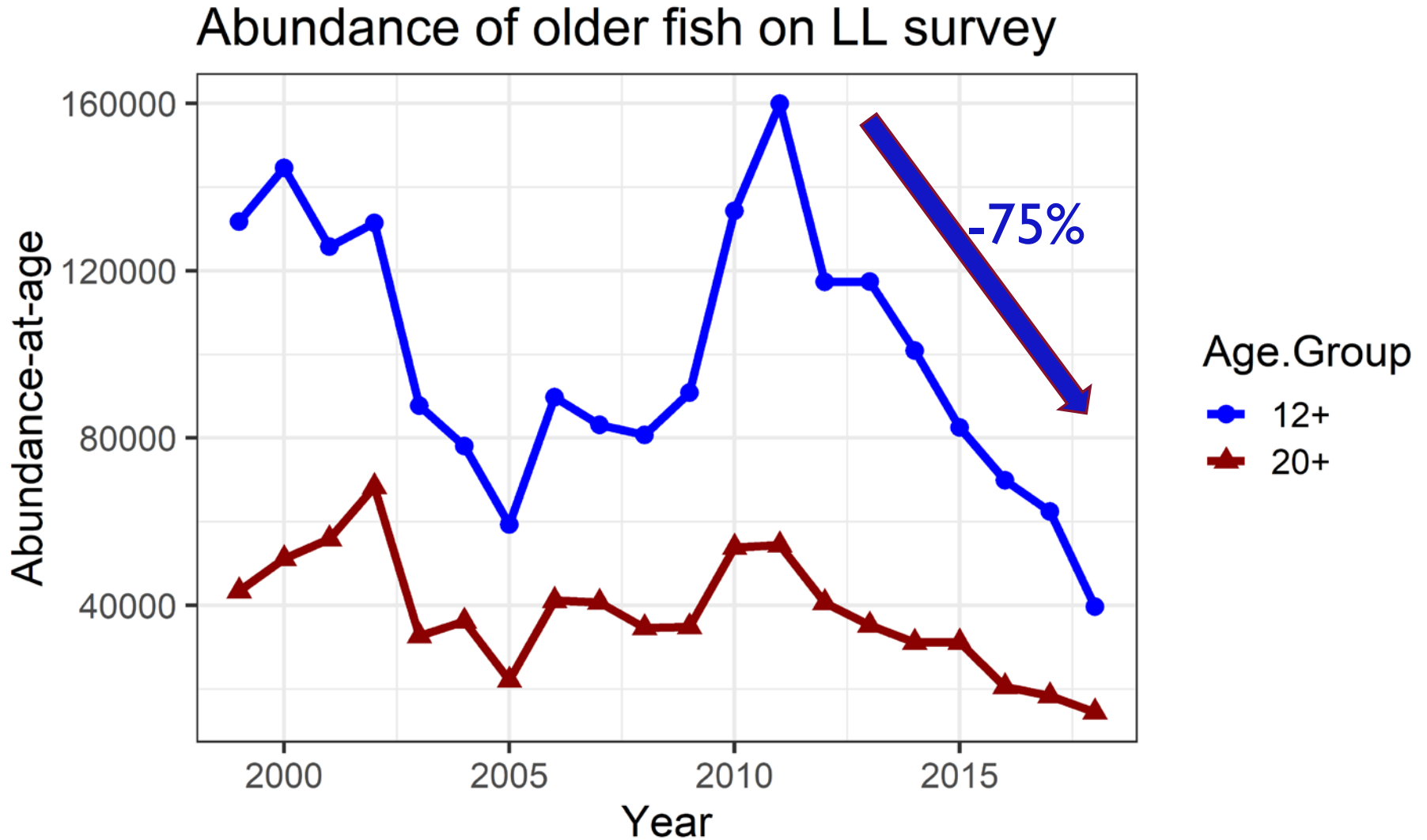


LONGLINE SURVEY AGES

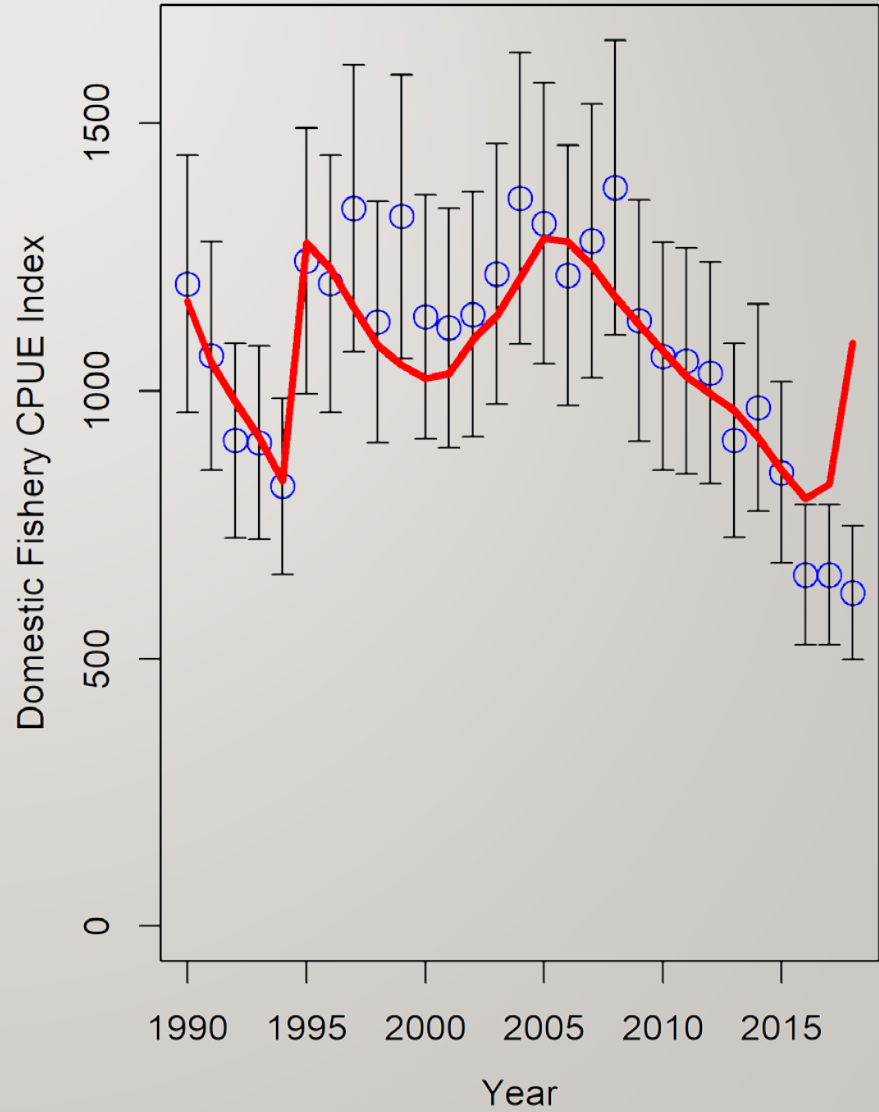
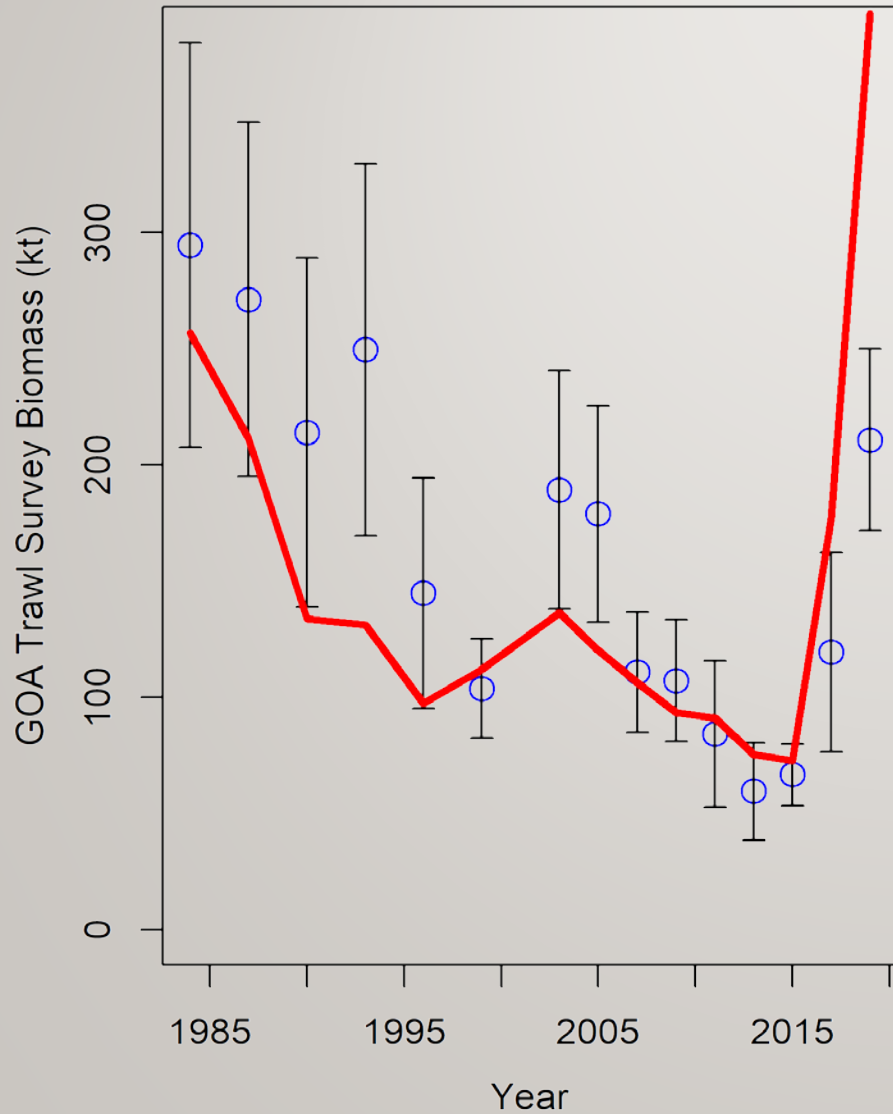


Age

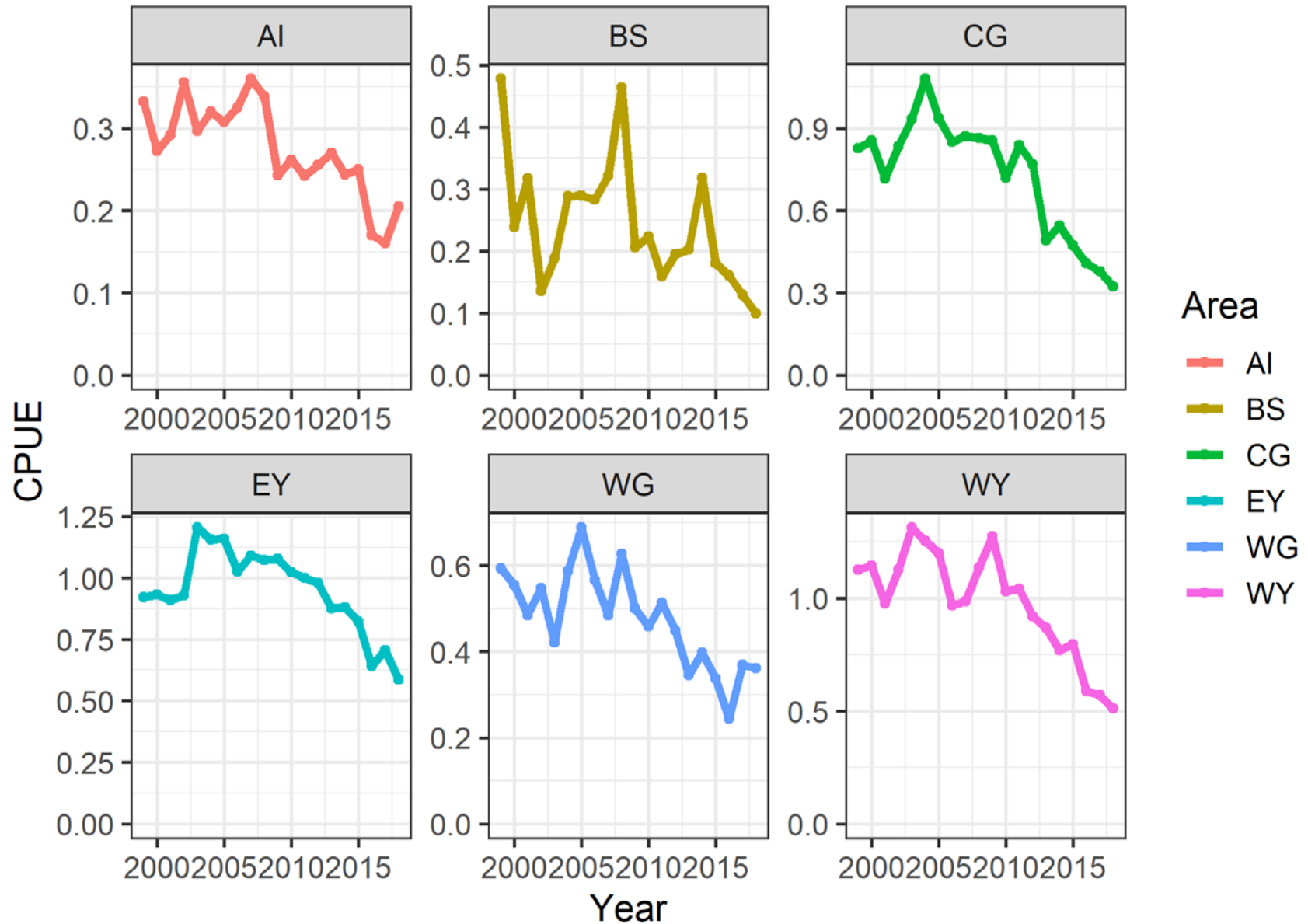
Old fish abundance declining



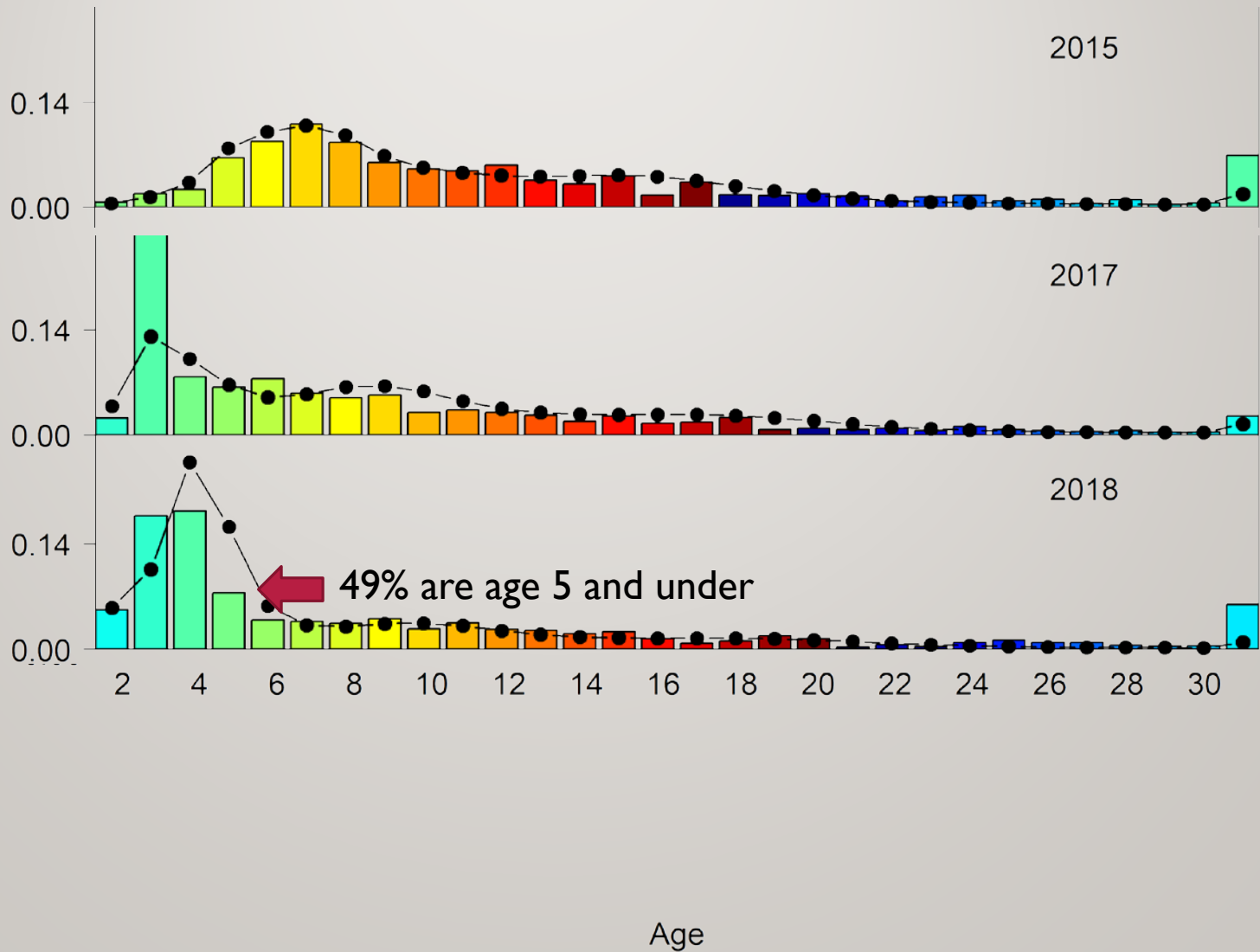
Fit to indices poor



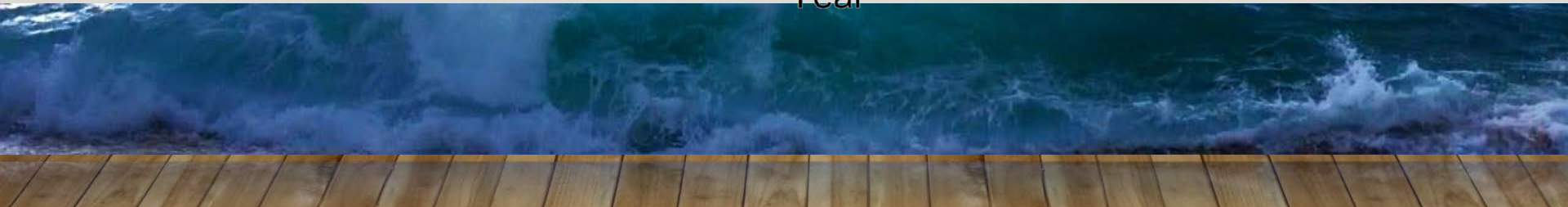
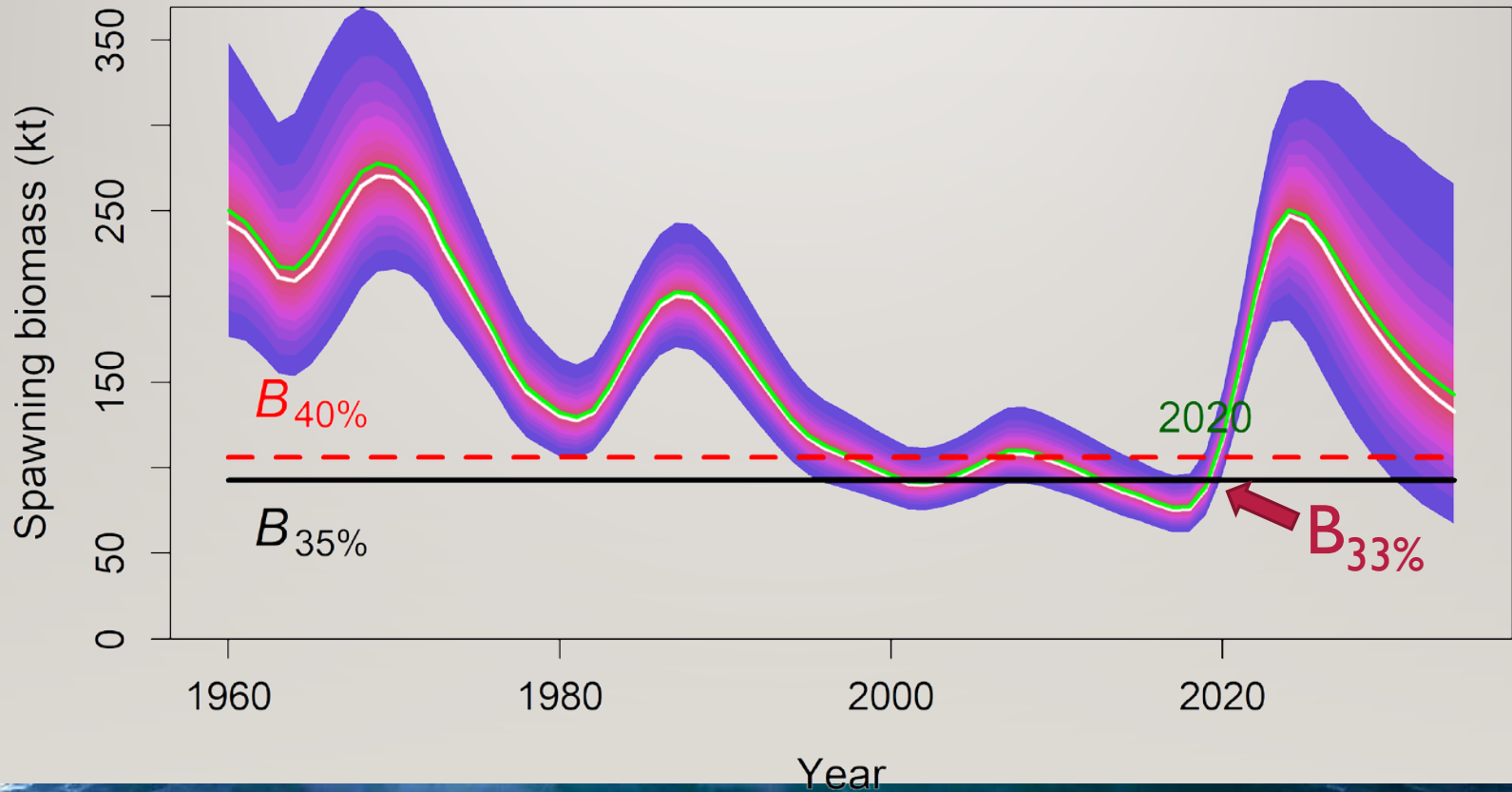
Fishery CPUE by area



Fixed gear fishery ages

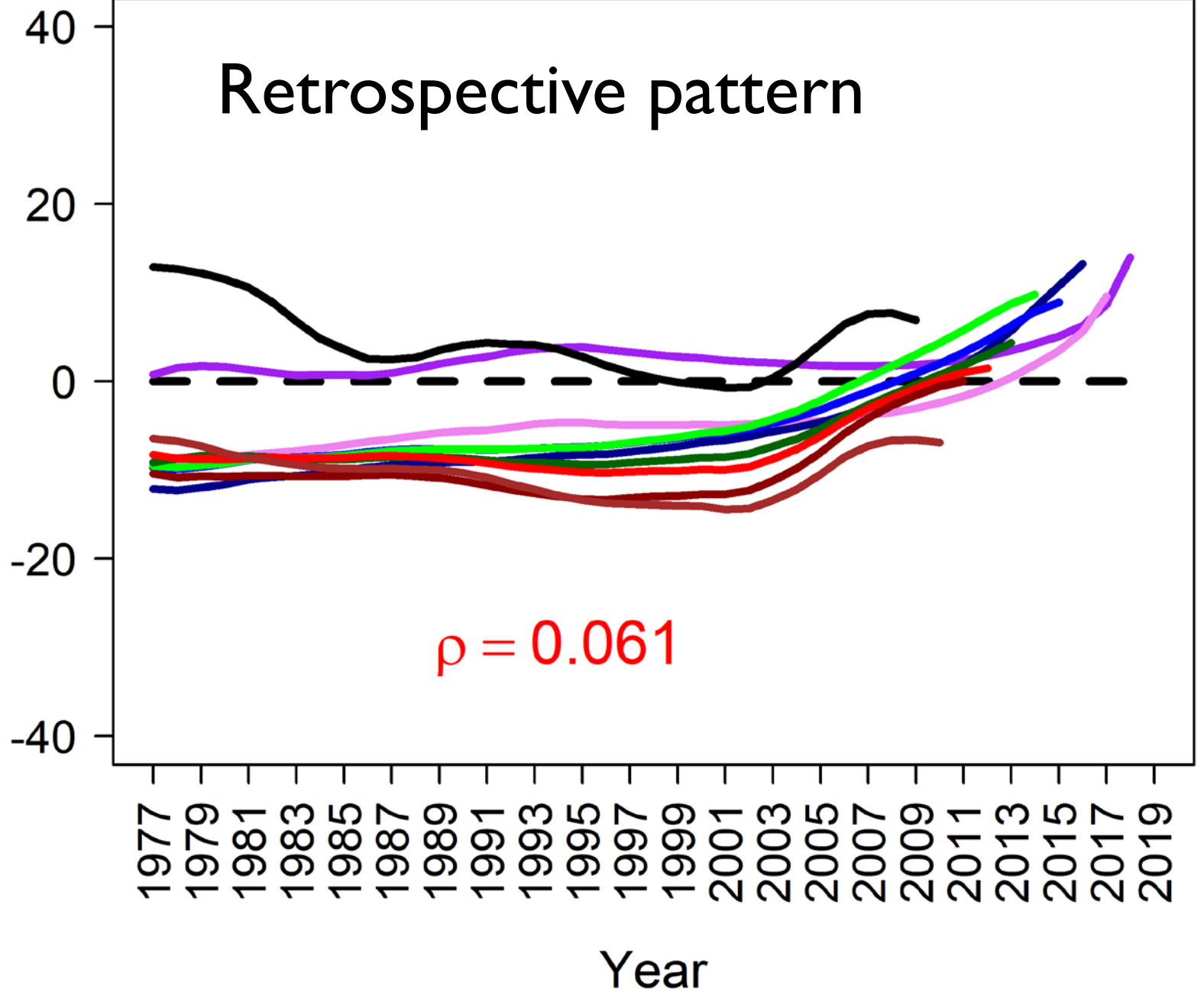


2019-2020 spawning biomass low...

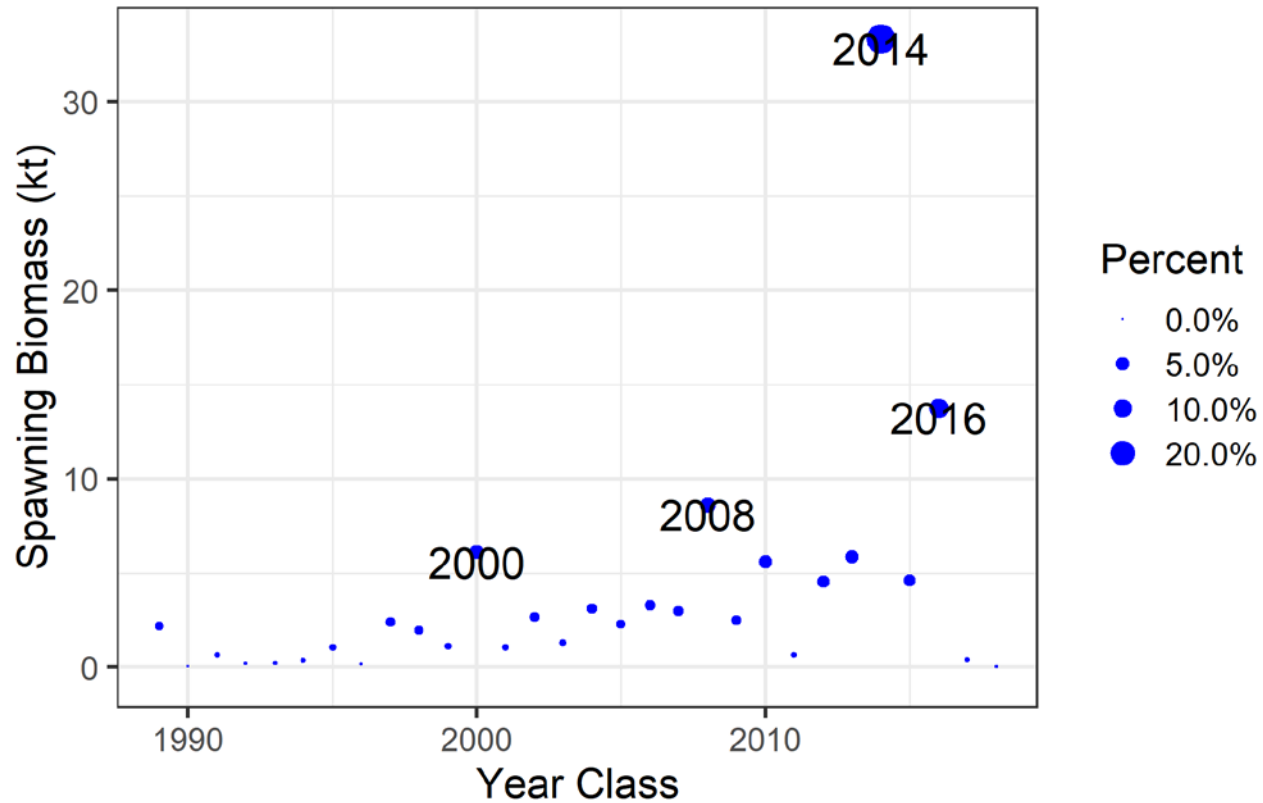


Retrospective pattern

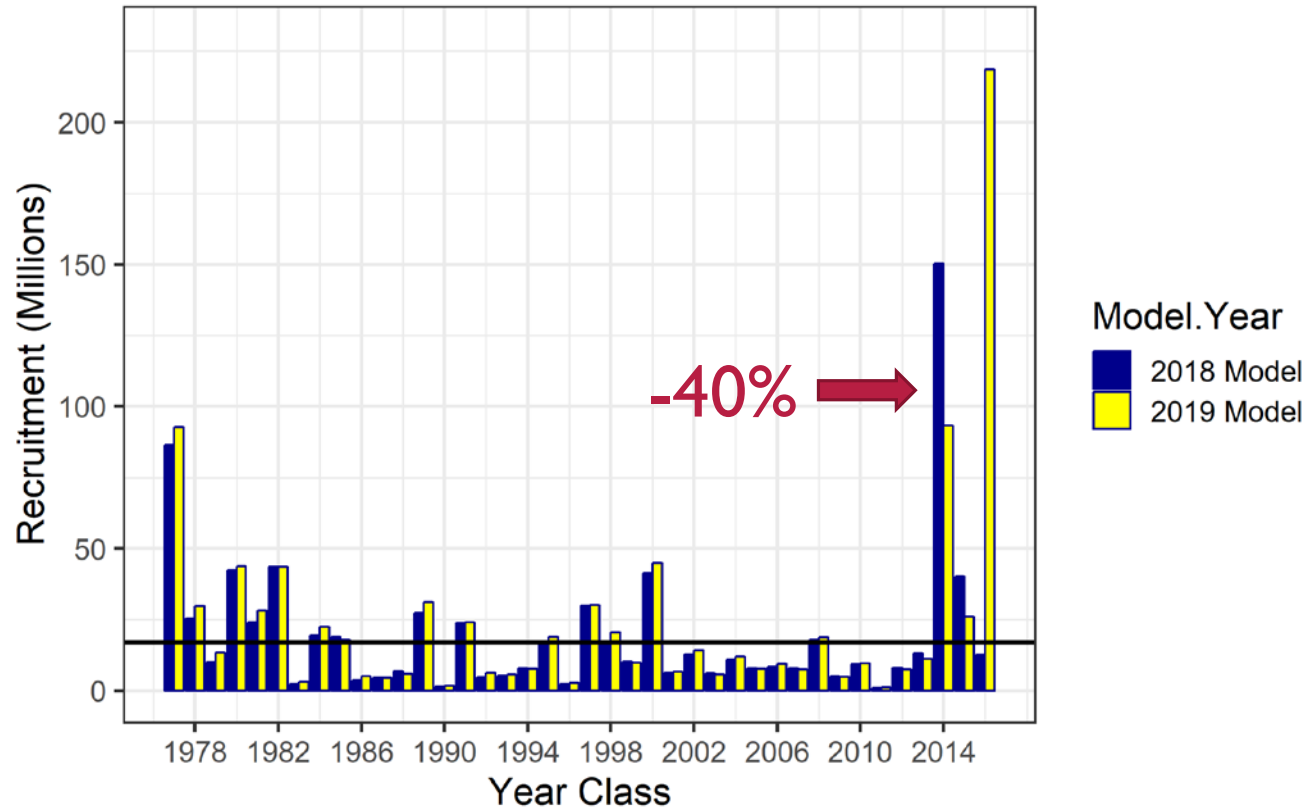
Percent differences
from terminal year



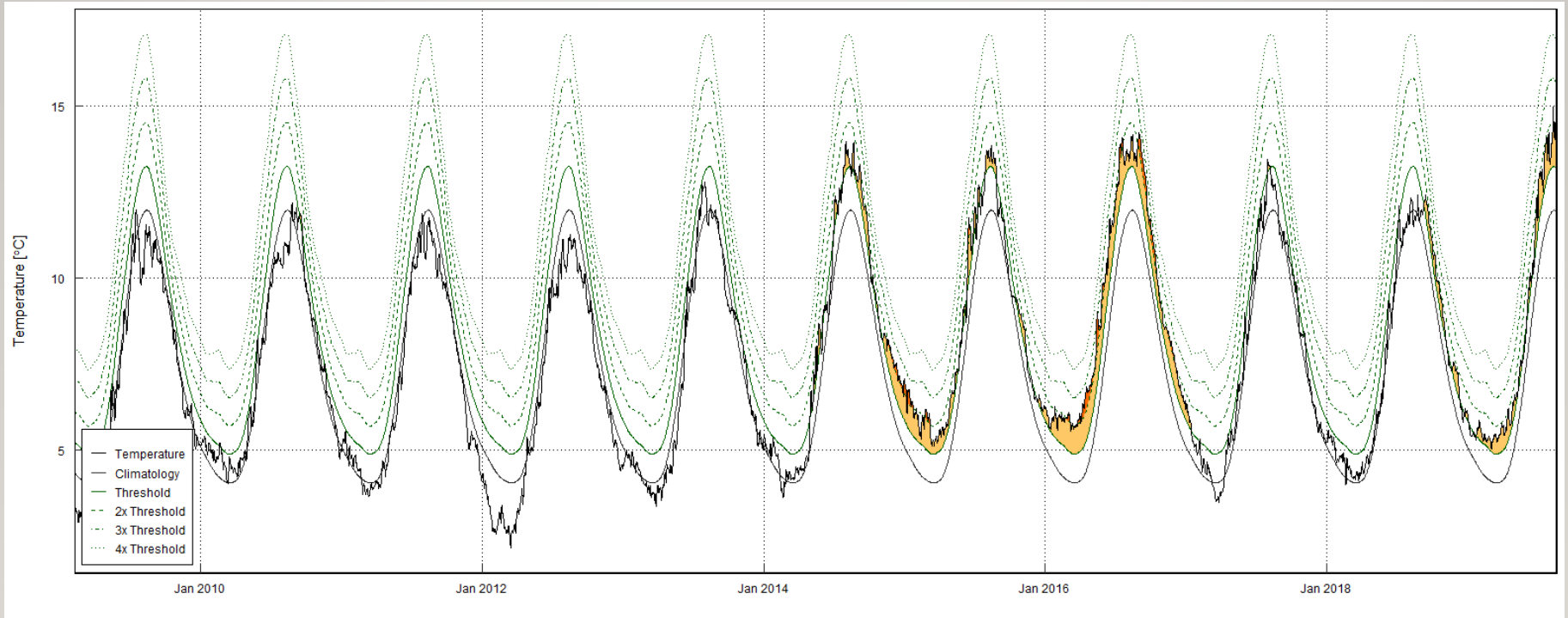
2014, and ... 2016 we also need you...



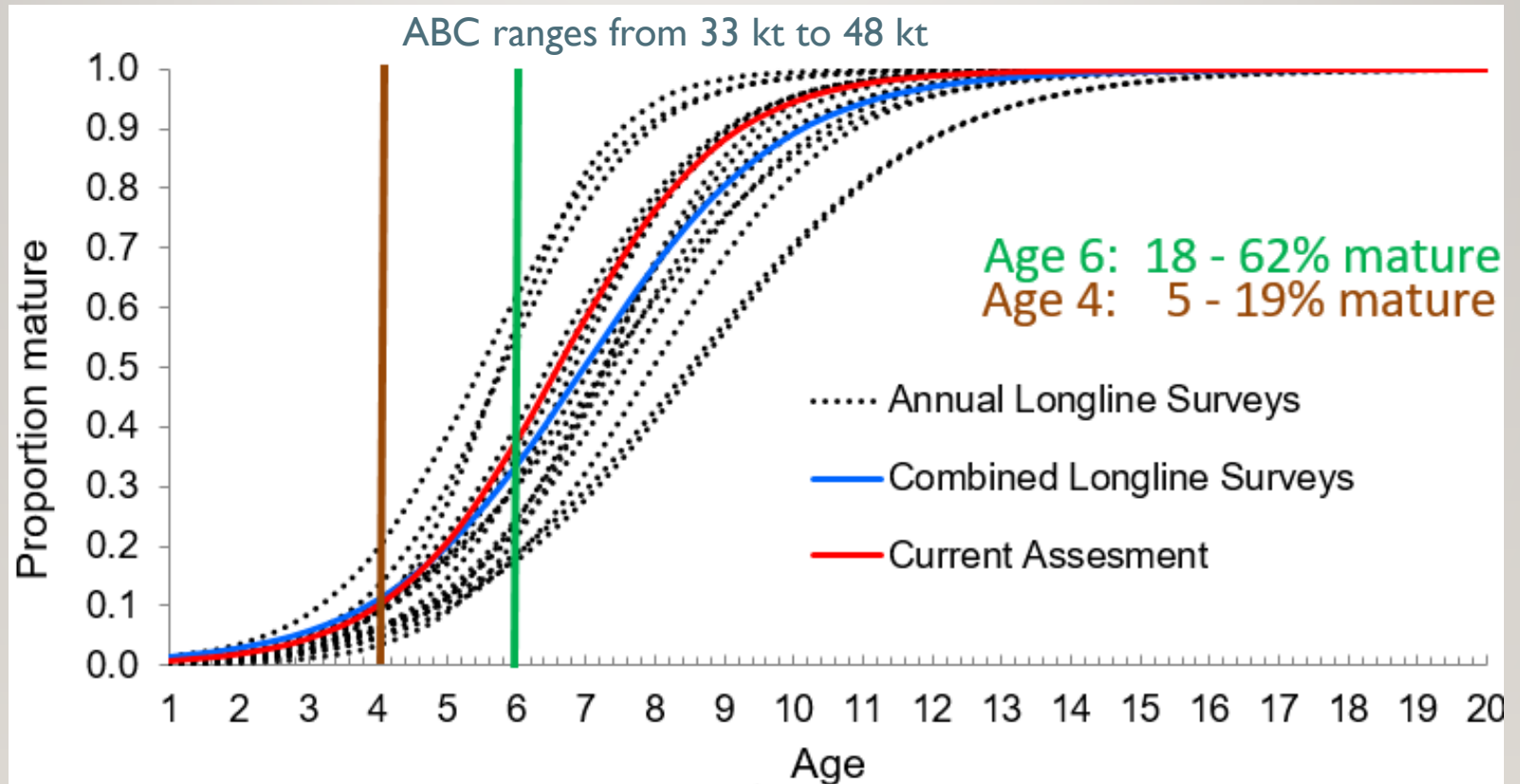
THE 2014 YEAR CLASS DECREASED (AGAIN)



HEAT-WAVE (ESR/ESP)



MATURITY VARIABLE



RISK-MATRIX FRAMEWORK: 3

- Assessment model: 2 (increased concern)
- Population dynamics: 3 (major concern)
- Ecosystem: 2 (increased concern)
- Fishery performance: 3 (major concern)



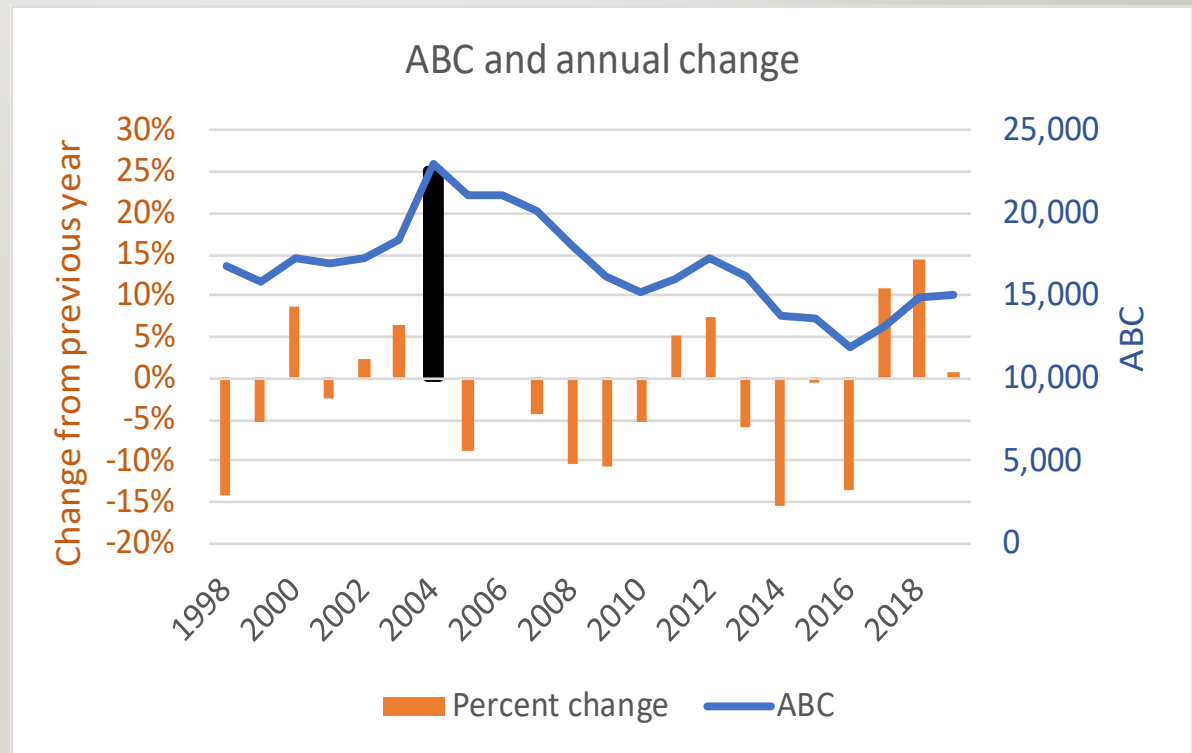
ABC SUMMARY

- LL survey RPN up substantially from low in 2015
- Fishery CPUE index at time series low in 2018
- 43% unfished spawning biomass in 2020 (now Tier 3a)
- ABC_w 2019: 15,068 t
- ABC 2020 (Max): 44,065 t (vs. 38,916 t projected)
 - 292 % **increase** from 2019
- Author recommended ABC_w 18,763 (+25%)



BOTTOM LINE

- Author's ABC 2020 is much lower than max
- Rebuilding spawning biomass and improving age structure is primary goal
- ABC 2021 continues with 25% increase from 2020 for now
- Also keeps fishing mortality level between 2019 and 2020



APPORTIONMENT

- CIE unconcerned with static apportionment
- Author recommended same apportionment
 - no new alternatives prepared
- **MSEs and spatial work continues (Appendix 3D)**
 - Maximum yield can be achieved with a wide range of apportionments
- SSC agreed at October meeting
 - while noting the old apportionment has diverged quite a bit



Sablefish OFL issue

- Sablefish OFL is apportioned to BS, AI, and GOA
- EBS sablefish catch was very close to OFL in 2019
- Authors requested to give history of OFL apportionment
 - History is very sparse, informal discussions among authors
- Presented the options discussion
- Under status quo, OFL will be much higher in 2020



Sablefish OFL Background

- In 1996 stock transitioned to an all-Alaska assessment
 - BSAI started being apportioned same as GOA, but as TACs
 - ABC apportionments began in 1997
- ABC by subareas affords some protections
- Area-specific OFL
 - But status determination is Alaska-wide...summed over all areas

