

Saltwater Inc. Electronic Monitoring

Western Gulf of Alaska
Implementation Overview
2020 EFP Year

This presentation is considered proprietary and contains confidential information.



Saltwater Inc.
Electronic Monitoring

Western Gulf of Alaska Pollock Trawl

The WGOA Pollock Trawl EFP covers both catcher vessels and tender vessels in order to provide complete compliance monitoring for 100% salmon census of catch at the shoreside processor.



WGOA Fleet EFP Participation

A quick glance at the the 2020 fleet.

Summary Information	Installed Vessels	Active Vessels	Trips	Sea Days	Average Trip Length (days)
Catcher Vessel	18	14	250	585	2.3
Tender	11	11	21	83	4
Totals	29	25	271	668	

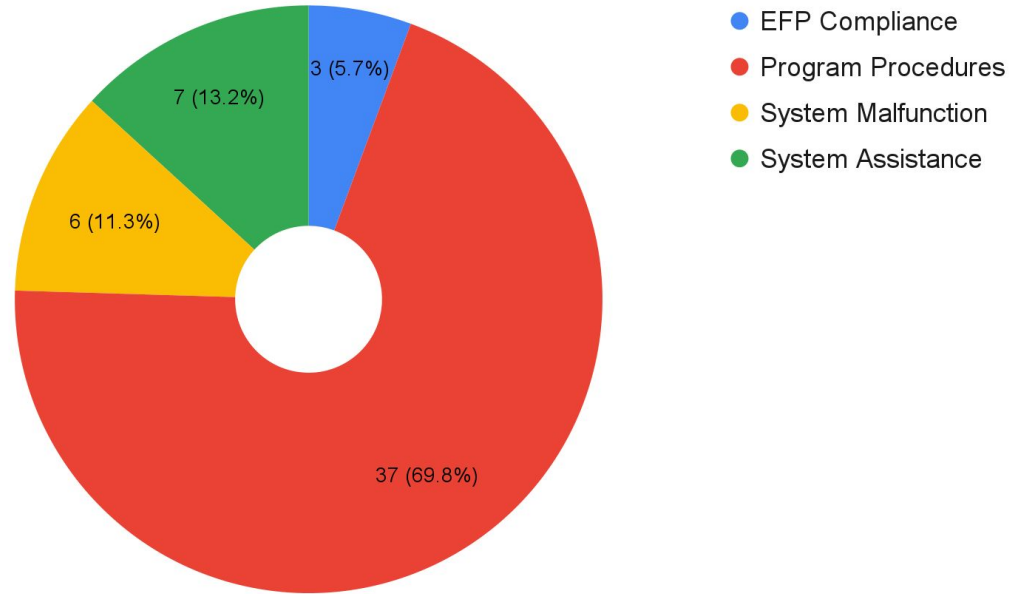
In-Season Communication

Phone communications between Saltwater and Vessels included: EFP Issue, Program Assistance, Reporting EM System Issue, and EM System Assistance.

These communications are in addition to the 271 Feedback Forms that were sent to each vessel after each trip.



Participant Communication



<i>Participant Communication</i>	<i>Counts</i>
EFP Compliance	3
Program Procedures	37
System Malfunction	6
System Assistance	7
Grand Total	53

Logbook and Hard Drive Summary Information

A breakdown of data submission.

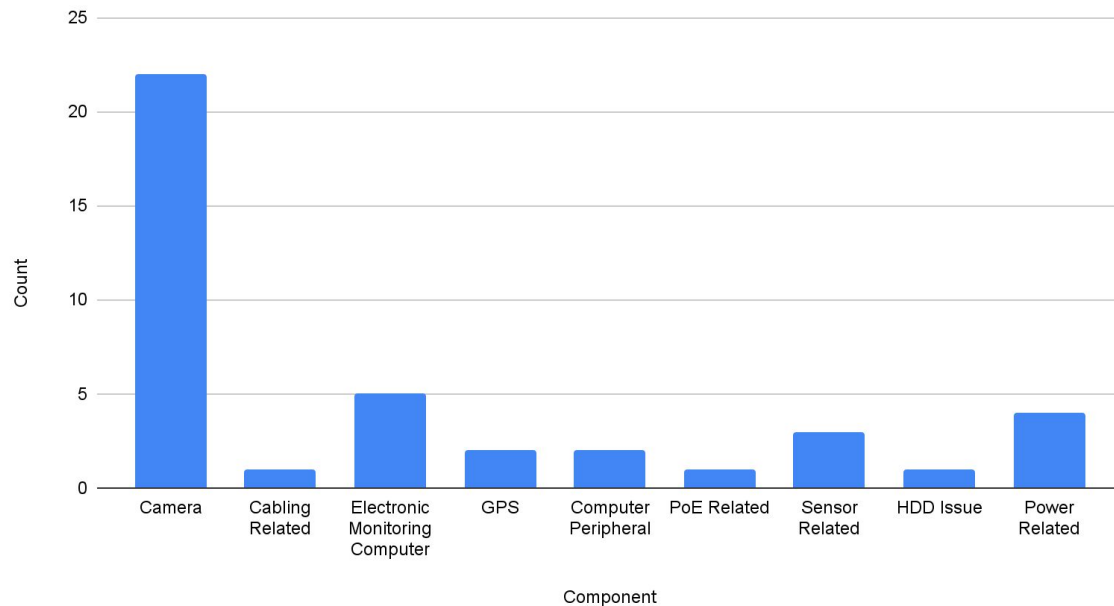
Summary Information	Trips	Logbooks	Logbook Submission Rate	HDDs Received	HDDs Failed	Avg Trips per Drive
Catcher Vessel	250	244	97.60%	106	1	2.36
Tender	21	20	95.24%	20	0	1.05
Totals	271	264	96.42%	126	1	1.70



Saltwater Inc.
Electronic Monitoring

EM System Issues

Component Replacement



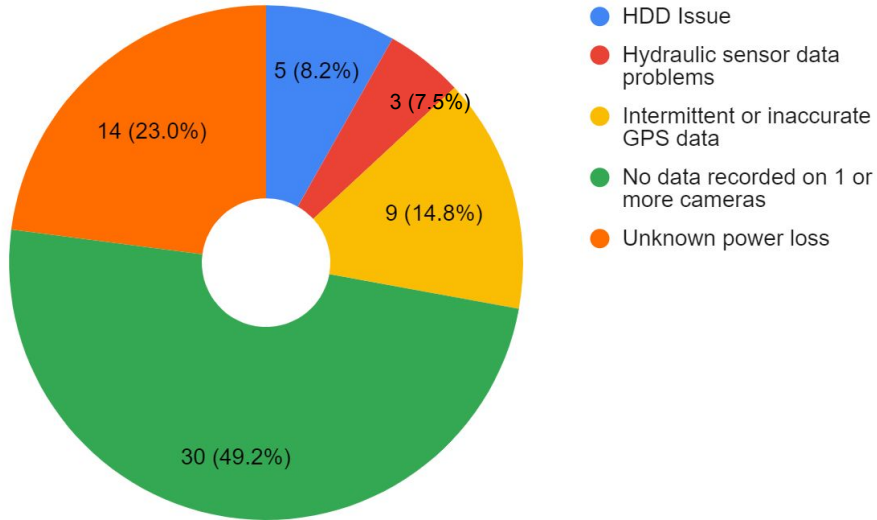
Certain system issues required that a particular EM Component be replaced in the event they could not be repaired or corrected through troubleshooting. During the season, no issues prevented a vessel from participating in the EFP.

Note:

A manufacturer defect in camera hardware led to a replacement of 22 cameras, most of which were replaced prior to the season so data was not affected. A smaller subset of these failures resulted in damage to the EM computer.

System Issues

Gaps Affecting Data by Trip

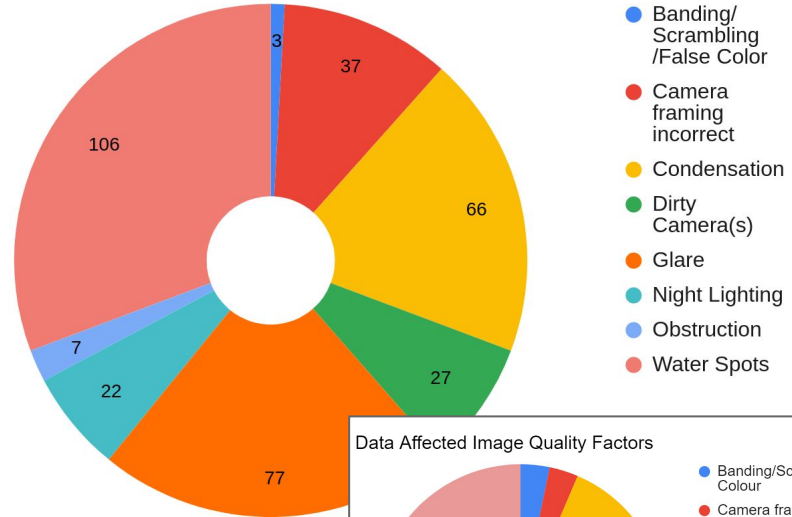


The Saltwater review team indicated how system performance affected their ability to assess the EFP required data. Fifteen percent (40 trips) had gaps where annotating key data elements was affected.

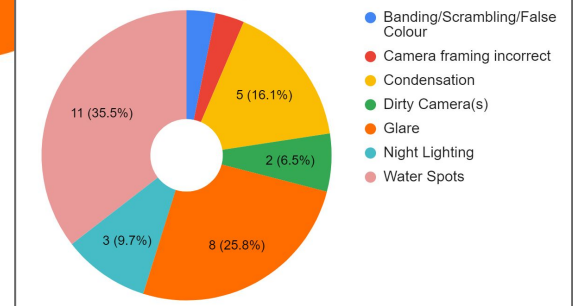
Image Quality

Image Quality Factors describe what issues affected EM System video. This is a quantitative assessment of all noted image quality affectors. Only a subset of issues affected the EM Data Review.

Total Image Quality Factors



Data Affected Image Quality Factors



eLog

Trawl EM EFP Logbook

Haul Discard 1: Pacific Cod (4 CT, 20 LB)

Species:	Pacific Cod
Count of discarded animals:	4
Discard Weight (lbs):	20

Reason for Discard:

EM system issues:

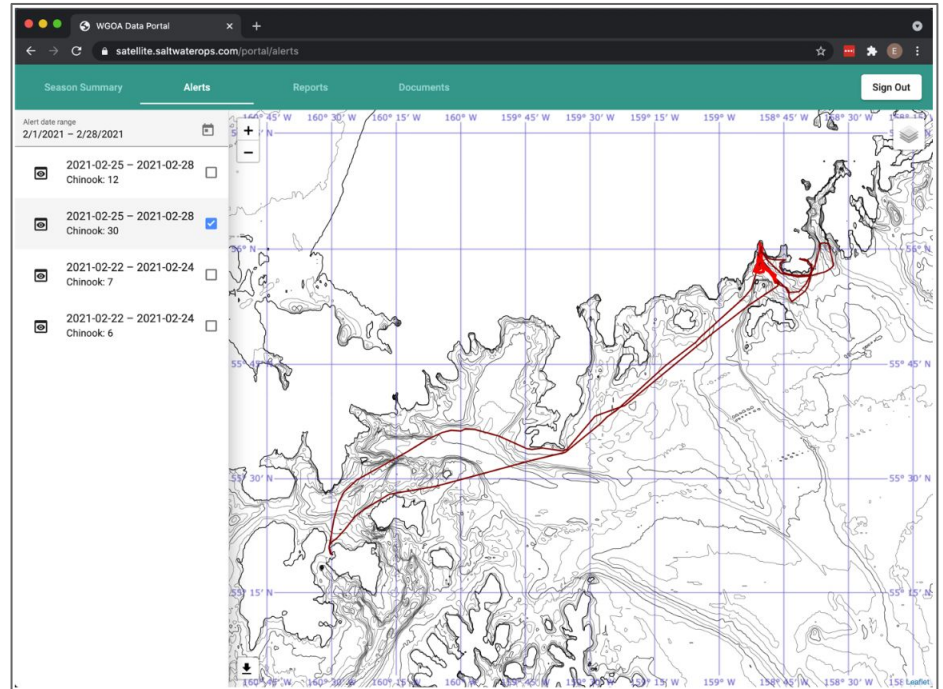
- Two vessels actively participated with the electronic logbook however the entire fleet is trained and ready for B-Season.

- The electronic logbook simplifies data entry for vessels by automatically suggesting haul data, populating geospatial information, and helping prevent erroneous entry.

- Helping vessels adjust to the digital format will have its challenges, but we have created paper and YouTube training guides, and will be available 24/7 to assist.

Data Portal

- The AEB Data Portal is checked for potential issues, and discard information is sent to the processors for eLandings.
- Once a fish ticket is generated, the eLandings data is used to provide participating fishermen with salmon hotspot information.
- The data portal is able to receive eLandings, eLog, and EM pertinent data. Using the three sources of information helps validate all of the information and helps generate quick responses to any issues with the data submitted.
- Having this information for B-Season should help keep all stakeholders apprised and continue to facilitate good feedback.



Summary

The WGOA Fleet has made improvements from 2019 to 2020.

- There has been a positive increase in reporting, EFP compliance, and a reduction in potential violations.
- Logbook submission increased 36% and only 8 total salmon discards were documented

It is a pleasure to work with them, and we look forward to 2021 B-Season.



A large fishing vessel is shown from a side-on perspective, moving through choppy blue water. The ship's deck is white, and its hull is dark. A massive plume of white water is being churned up by the ship's wake. The sky is filled with dozens of white seabirds, likely gulls or terns, flying in various directions. The overall scene conveys a sense of active maritime work in a natural, somewhat wild environment.

Saltwater Inc.

Electronic Monitoring

Providing quality data to support
healthy oceans and fisheries



Saltwater Inc.
Electronic Monitoring