

Appendix C: Tanner Crab Spatial Patterns

William Stockhausen

14 September, 2017

Contents

Introduction	1
Basemap	1
Survey CPUE by sex and maturity state	2
Legal-sized males	45

Introduction

This report creates a time series of maps of Tanner crab CPUE and bottom temperature from the NMFS EBS bottom trawl survey.

Basemap

The following figure illustrates the base map for subsequent maps of bottom temperature and survey CPUE.

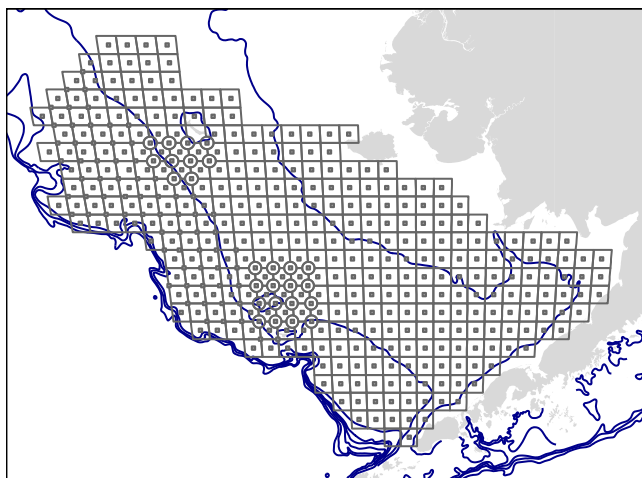


Figure 1: Basemap for future maps, with EBS bathymetry (blue lines) and the NMFS EBS bottom trawl survey station grid.

Survey CPUE by sex and maturity state

The following maps present survey CPUE (in biomass) for immature and mature components of the Tanner crab stock by sex superimposed on bottom temperature at the time of the survey for each year of the NMFS bottom trawl survey.

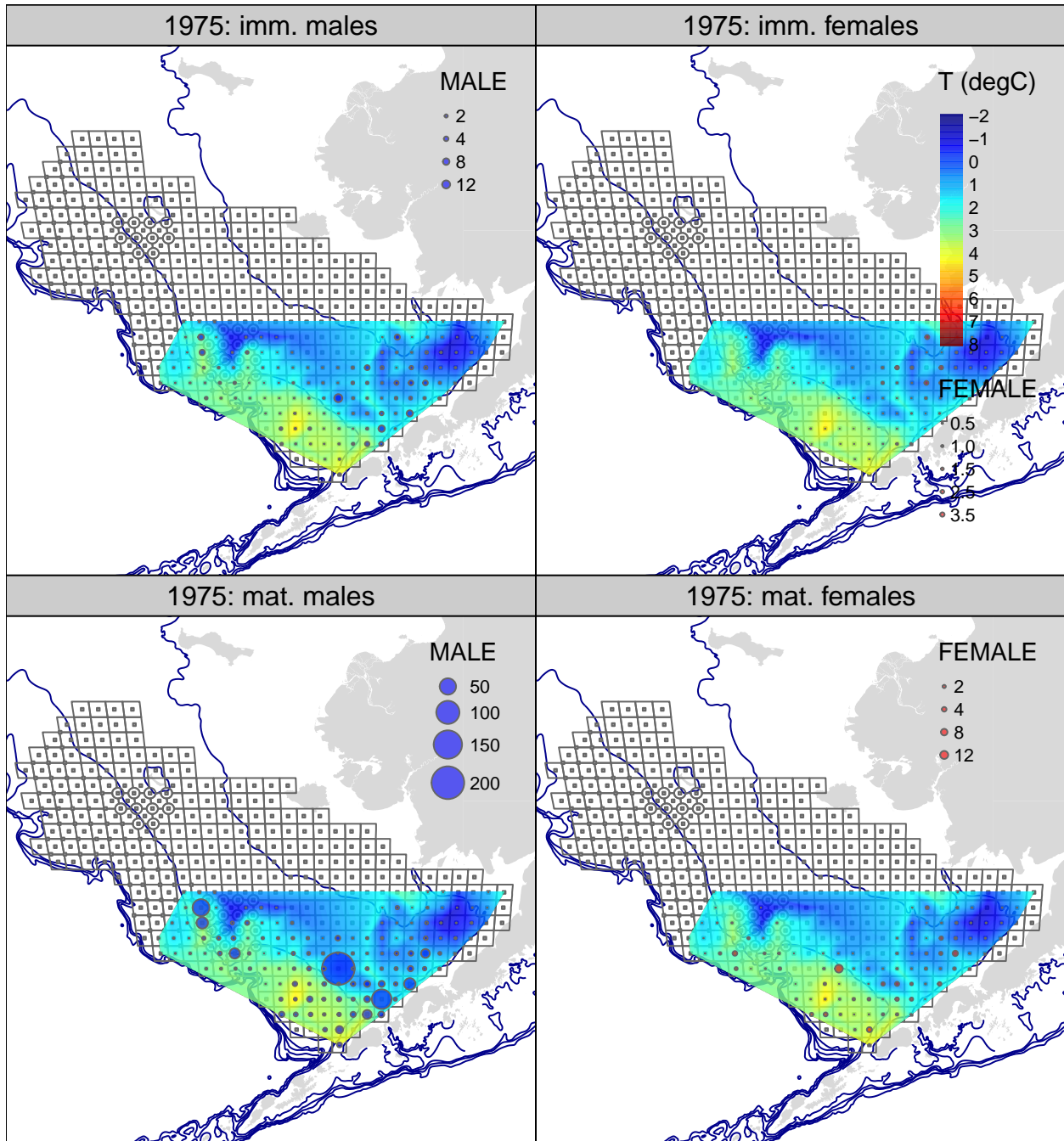


Figure 2: Tanner crab CPUE (biomass) from the 1975 NMFS EBS bottom trawl survey. upper row: immature crab; lower row: mature crab; lefthand column: males; righthand column: females.

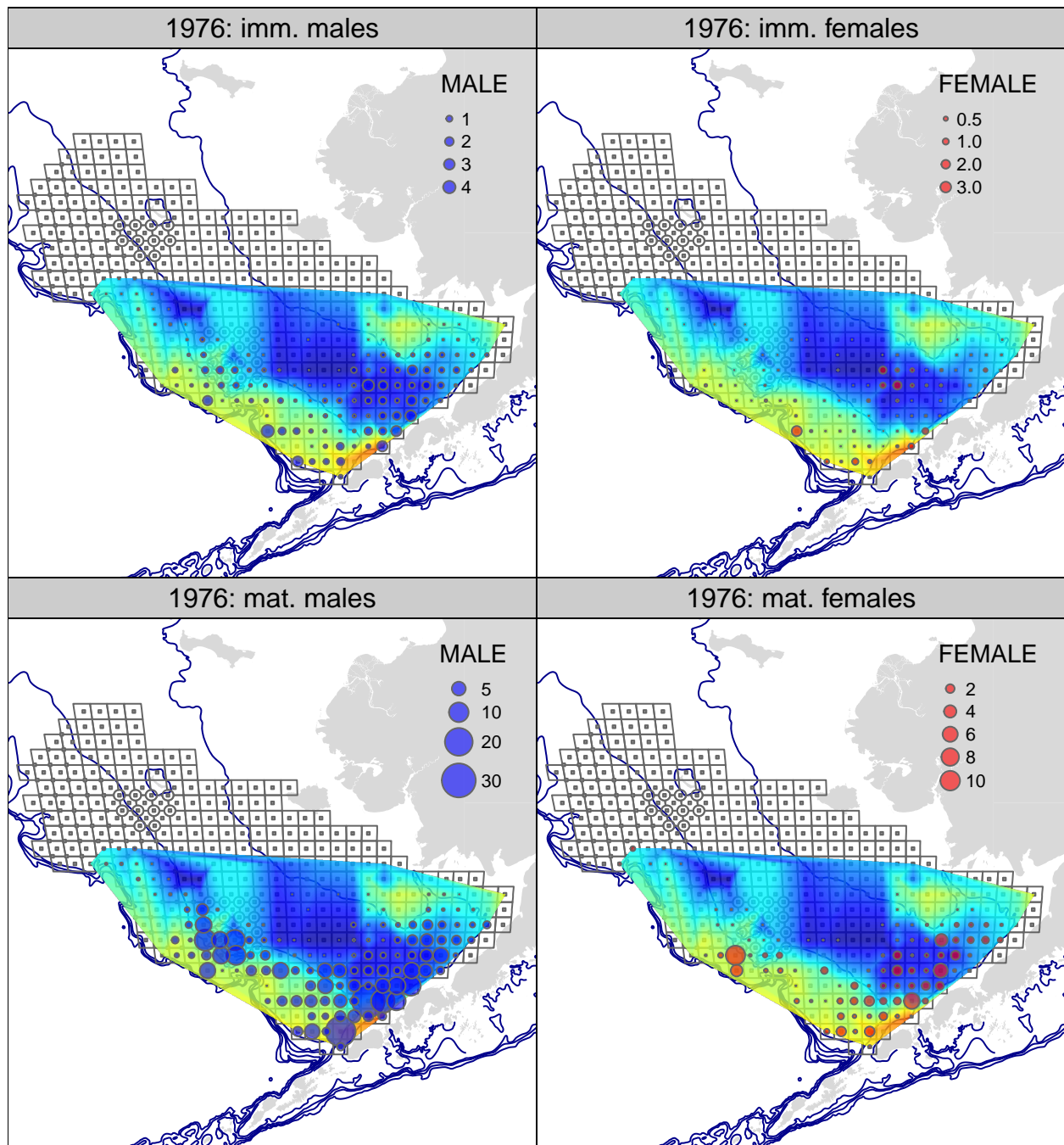


Figure 3: Tanner crab CPUE (biomass) from the 1976 NMFS EBS bottom trawl survey. upper row: immature crab; lower row: mature crab; lefthand column: males; righthand column: females.

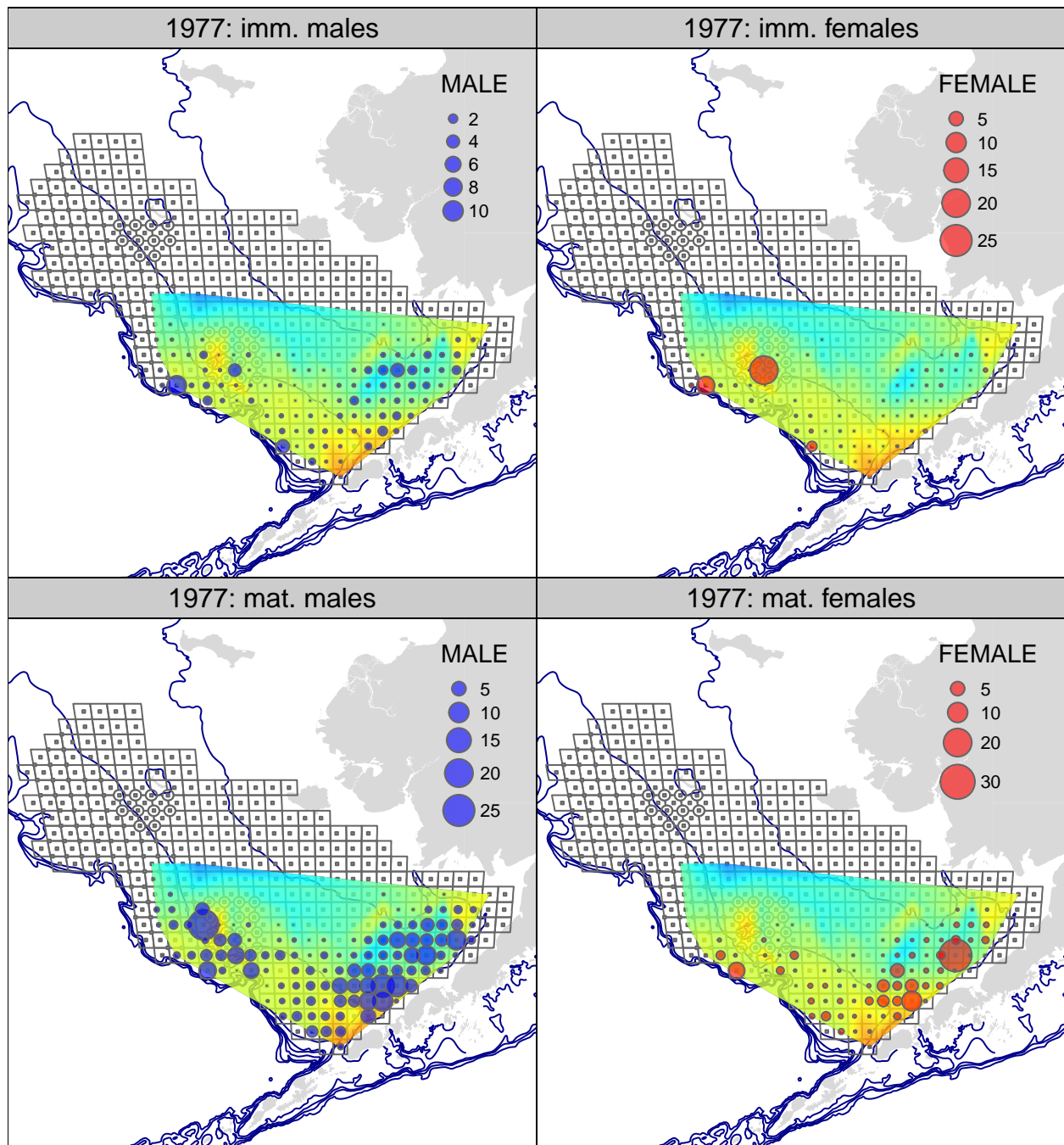


Figure 4: Tanner crab CPUE (biomass) from the 1977 NMFS EBS bottom trawl survey. upper row: immature crab; lower row: mature crab; lefthand column: males; righthand column: females.

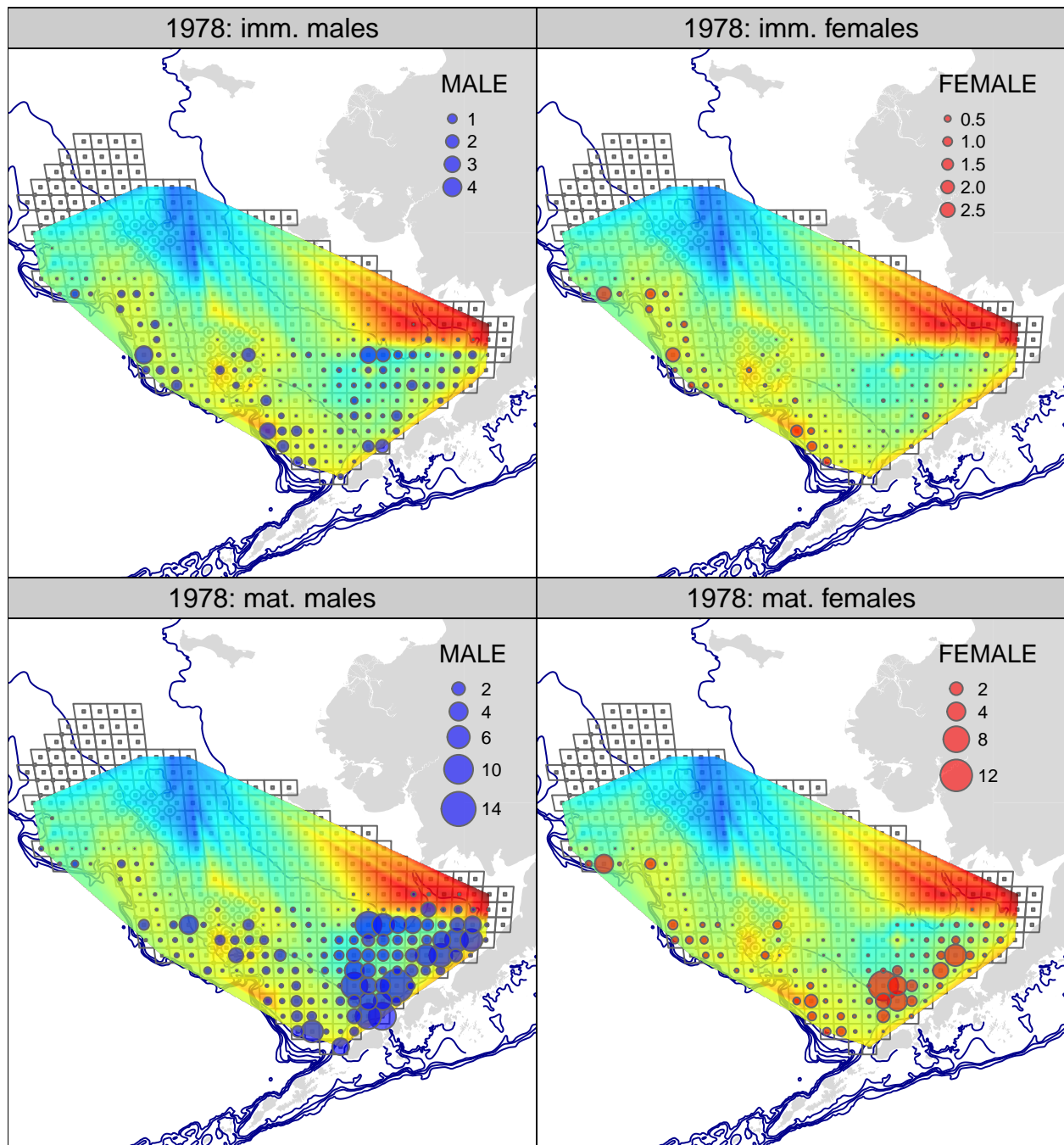


Figure 5: Tanner crab CPUE (biomass) from the 1978 NMFS EBS bottom trawl survey. upper row: immature crab; lower row: mature crab; lefthand column: males; righthand column: females.

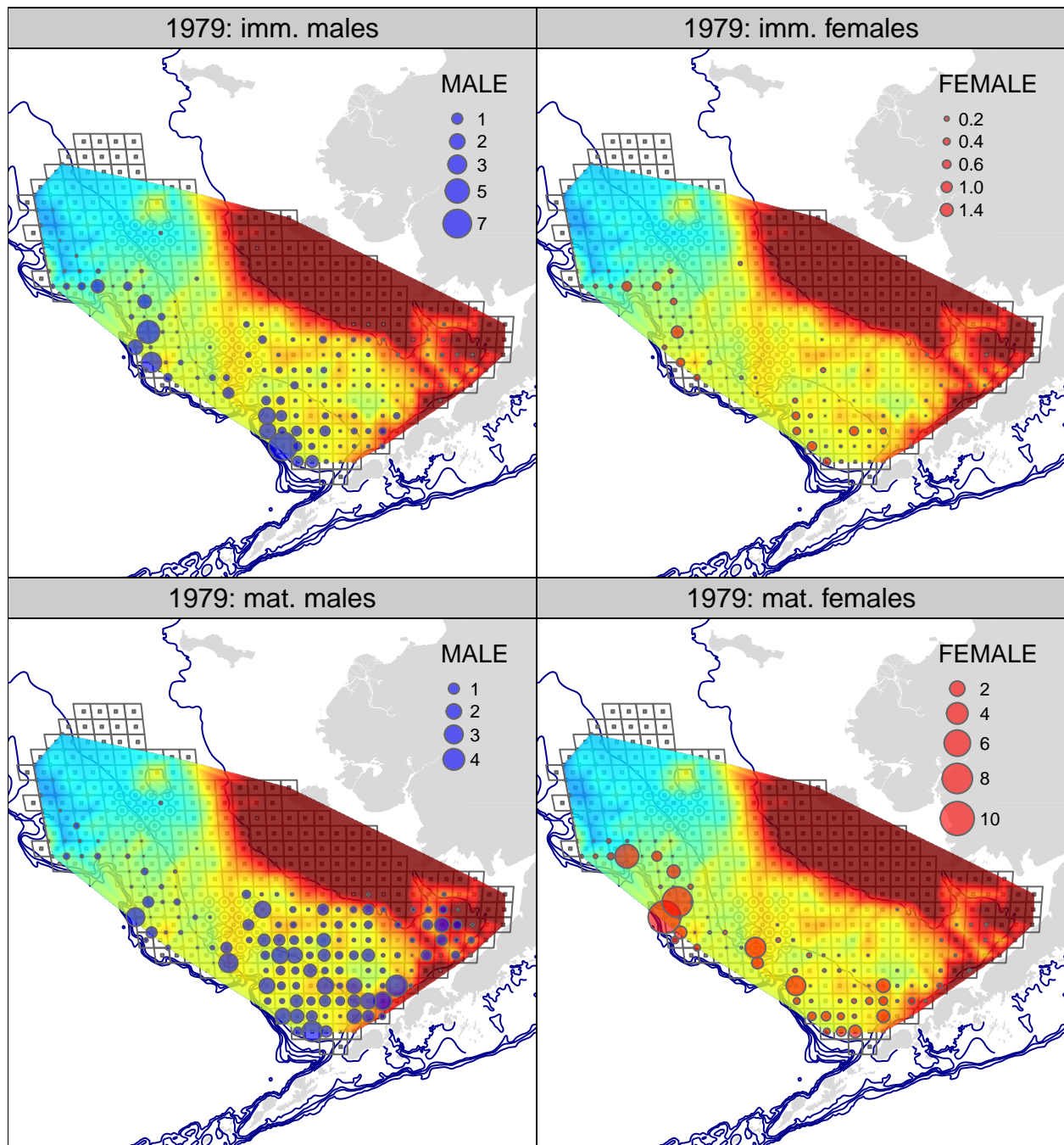


Figure 6: Tanner crab CPUE (biomass) from the 1979 NMFS EBS bottom trawl survey. upper row: immature crab; lower row: mature crab; lefthand column: males; righthand column: females.

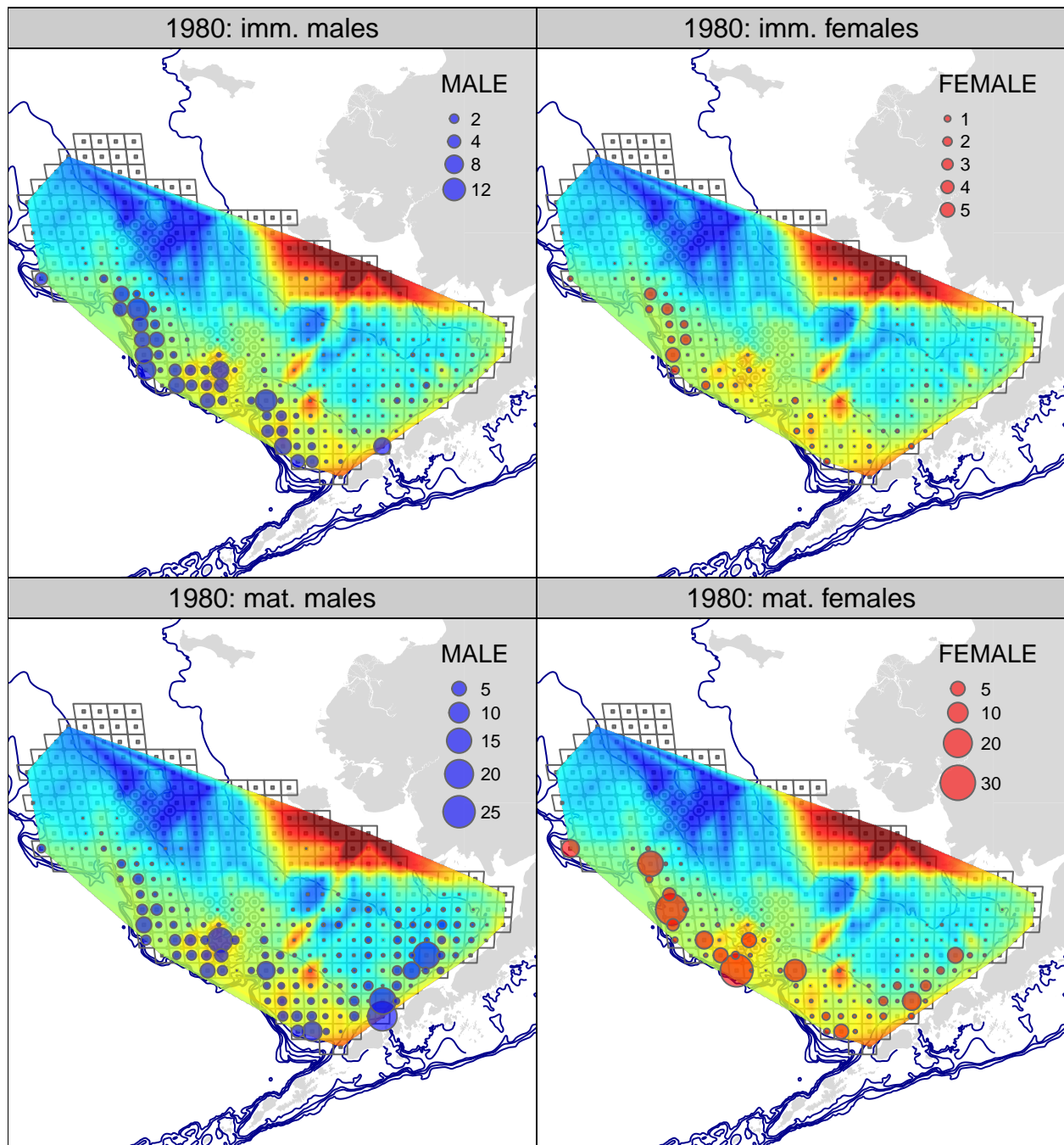


Figure 7: Tanner crab CPUE (biomass) from the 1980 NMFS EBS bottom trawl survey. upper row: immature crab; lower row: mature crab; lefthand column: males; righthand column: females.

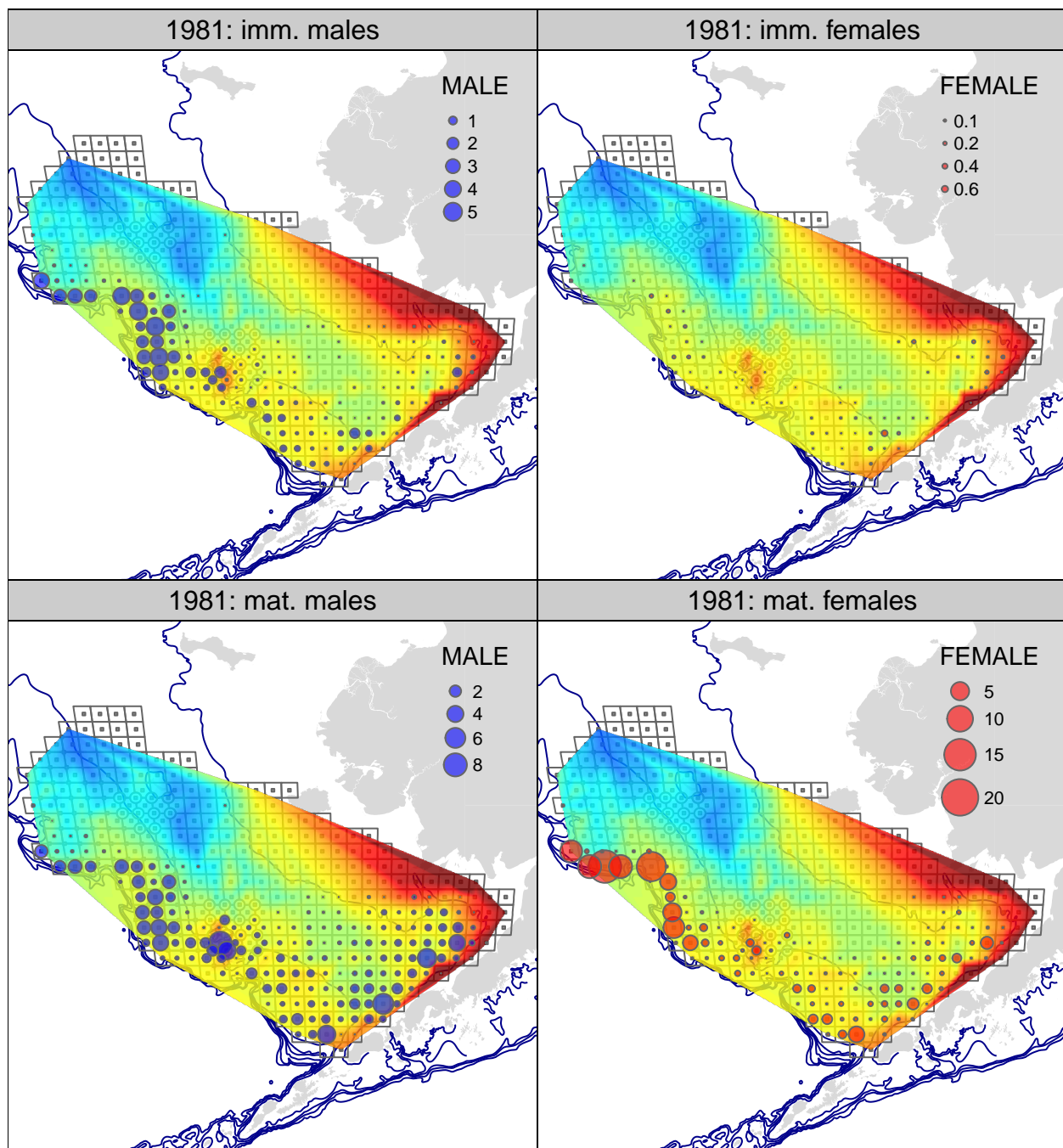


Figure 8: Tanner crab CPUE (biomass) from the 1981 NMFS EBS bottom trawl survey. upper row: immature crab; lower row: mature crab; lefthand column: males; righthand column: females.

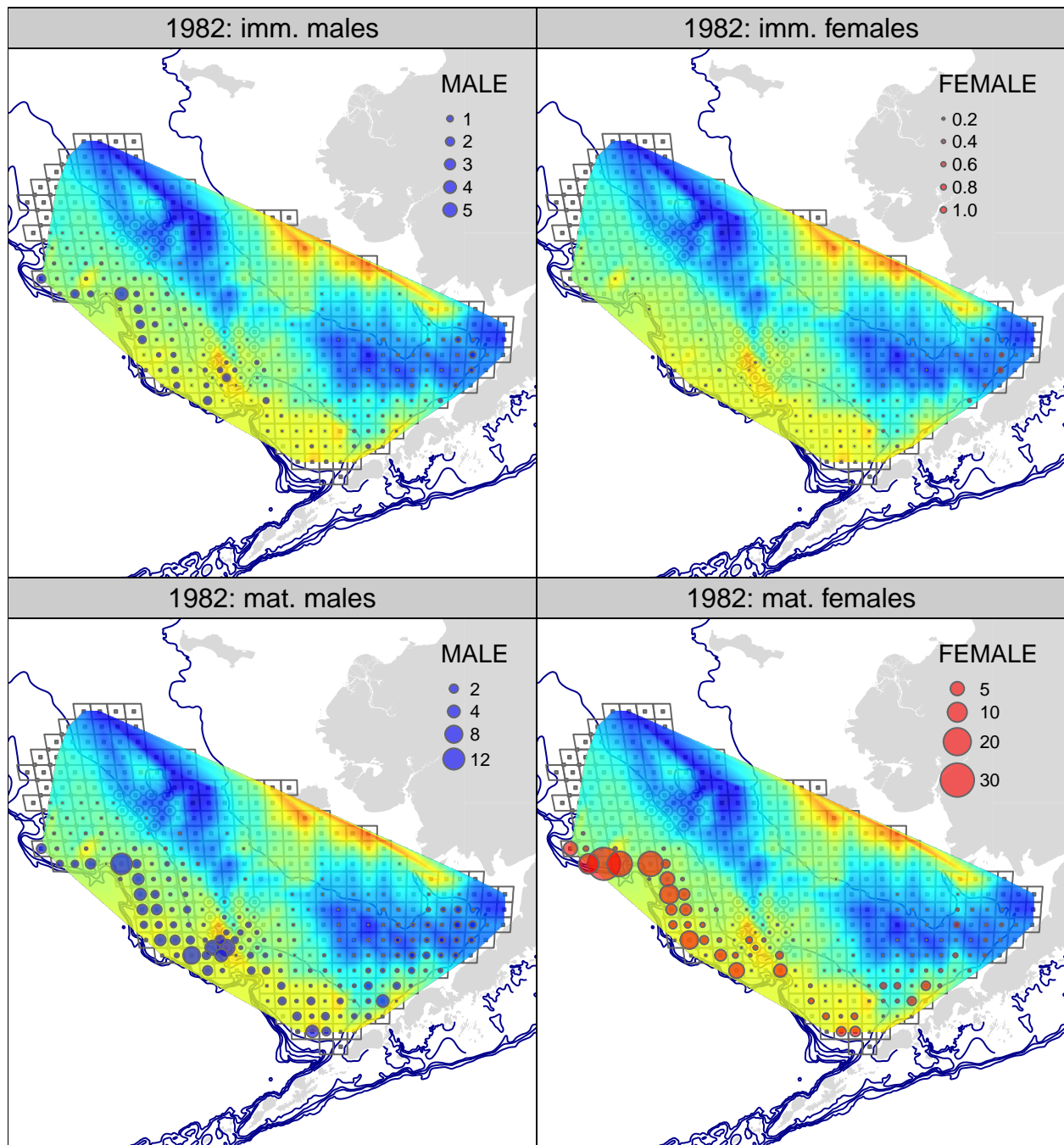


Figure 9: Tanner crab CPUE (biomass) from the 1982 NMFS EBS bottom trawl survey. upper row: immature crab; lower row: mature crab; lefthand column: males; righthand column: females.

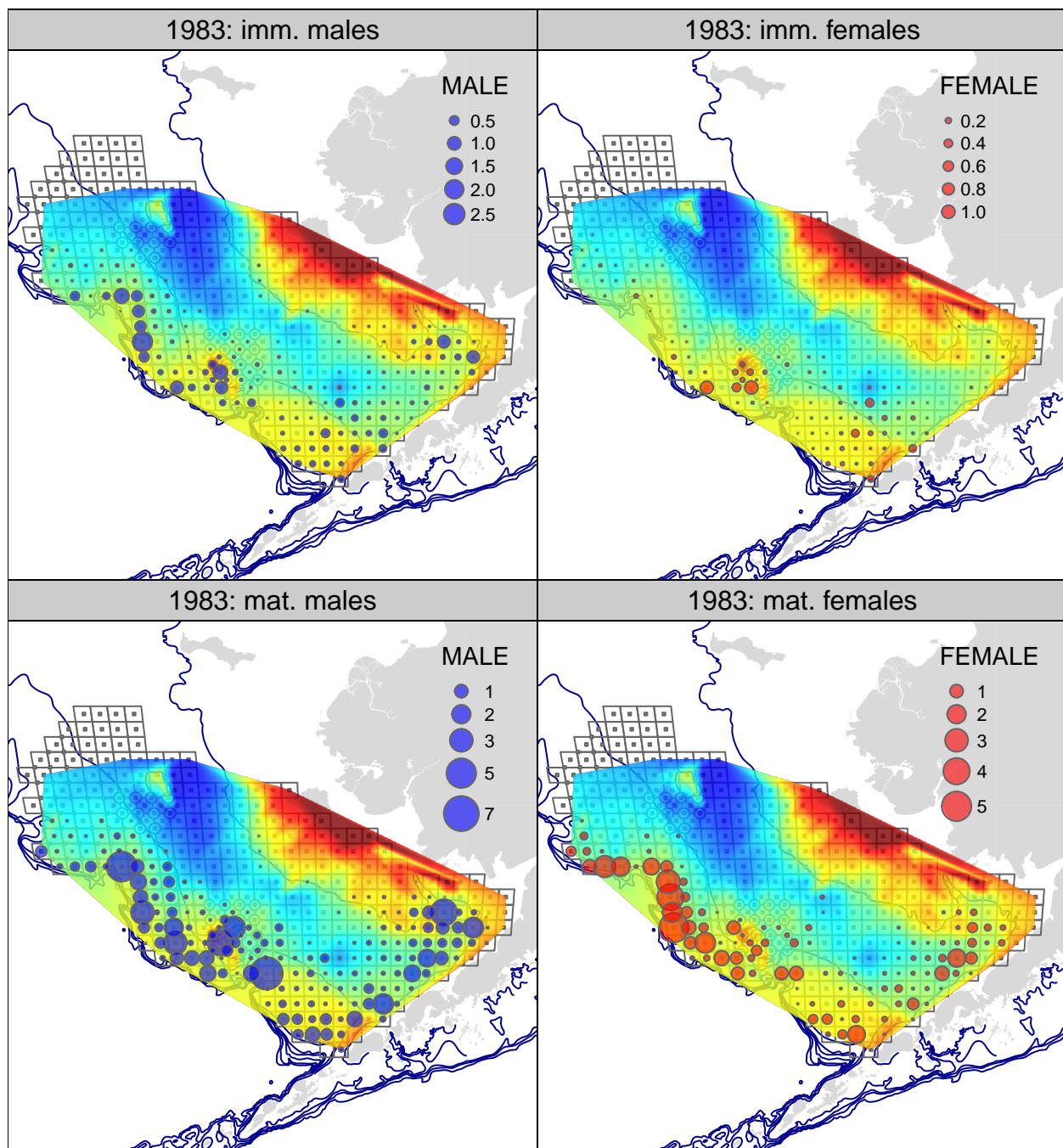


Figure 10: Tanner crab CPUE (biomass) from the 1983 NMFS EBS bottom trawl survey. upper row: immature crab; lower row: mature crab; lefthand column: males; righthand column: females.

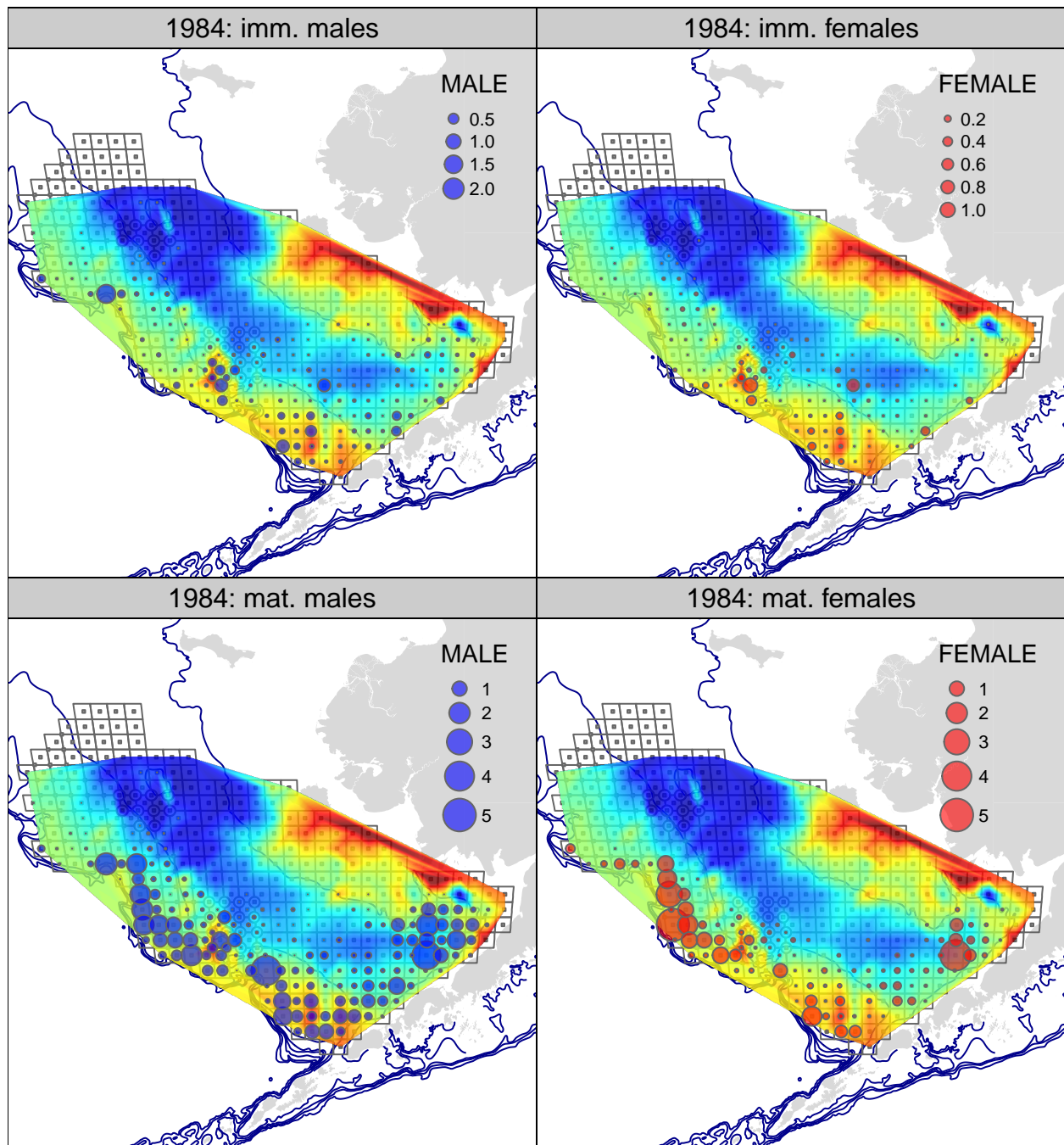


Figure 11: Tanner crab CPUE (biomass) from the 1984 NMFS EBS bottom trawl survey. upper row: immature crab; lower row: mature crab; lefthand column: males; righthand column: females.

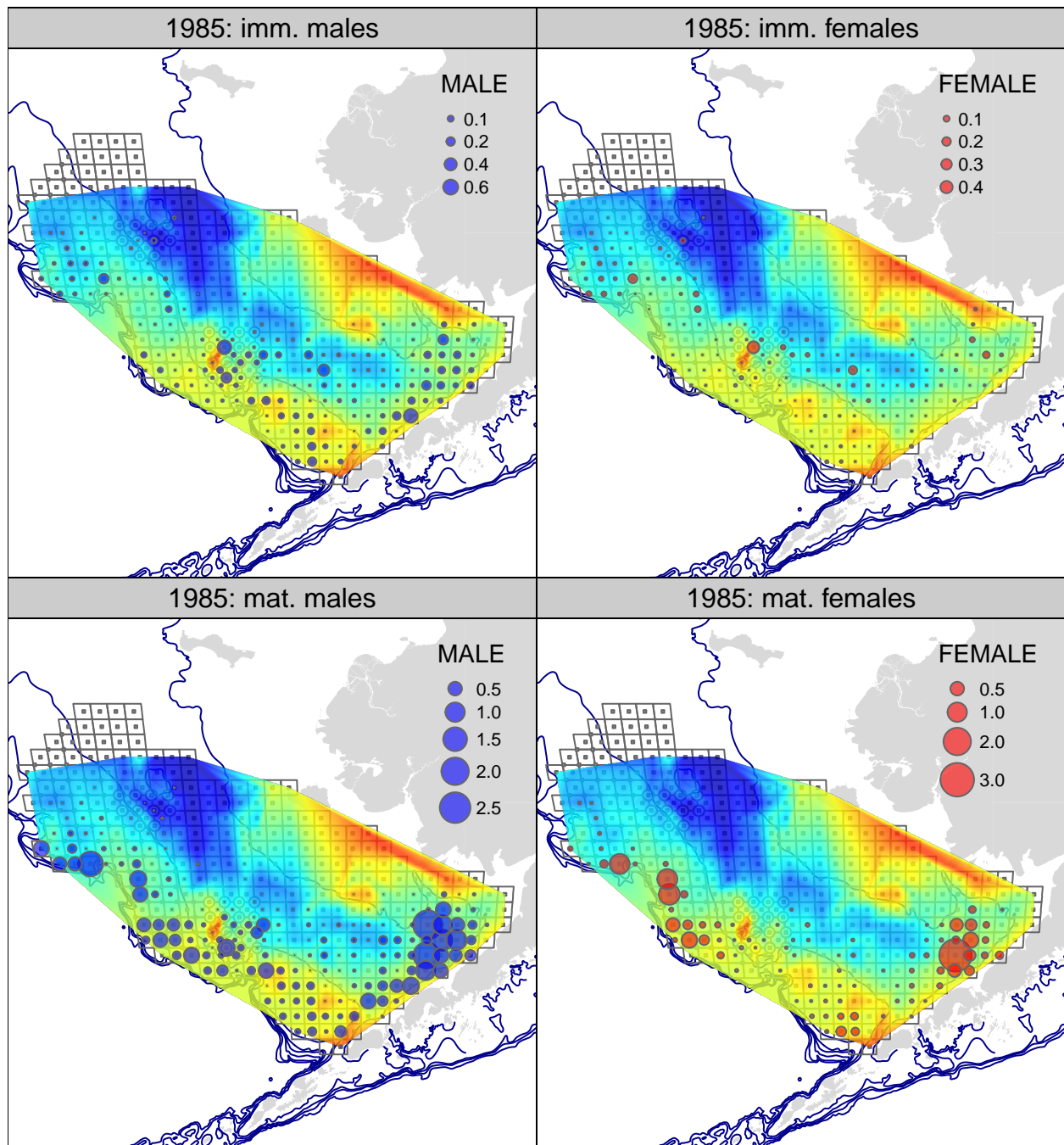


Figure 12: Tanner crab CPUE (biomass) from the 1985 NMFS EBS bottom trawl survey. upper row: immature crab; lower row: mature crab; lefthand column: males; righthand column: females.

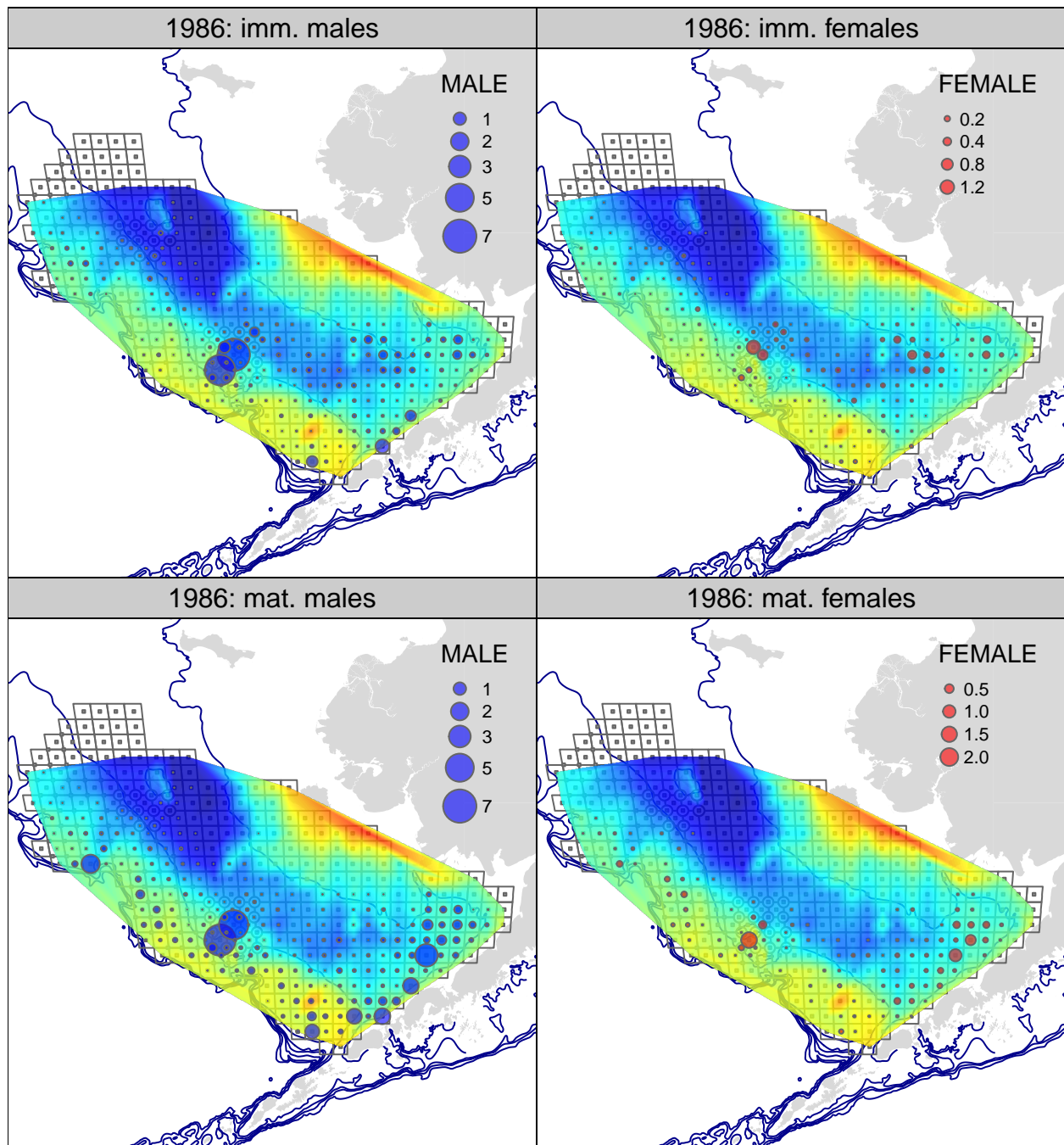


Figure 13: Tanner crab CPUE (biomass) from the 1986 NMFS EBS bottom trawl survey. upper row: immature crab; lower row: mature crab; lefthand column: males; righthand column: females.

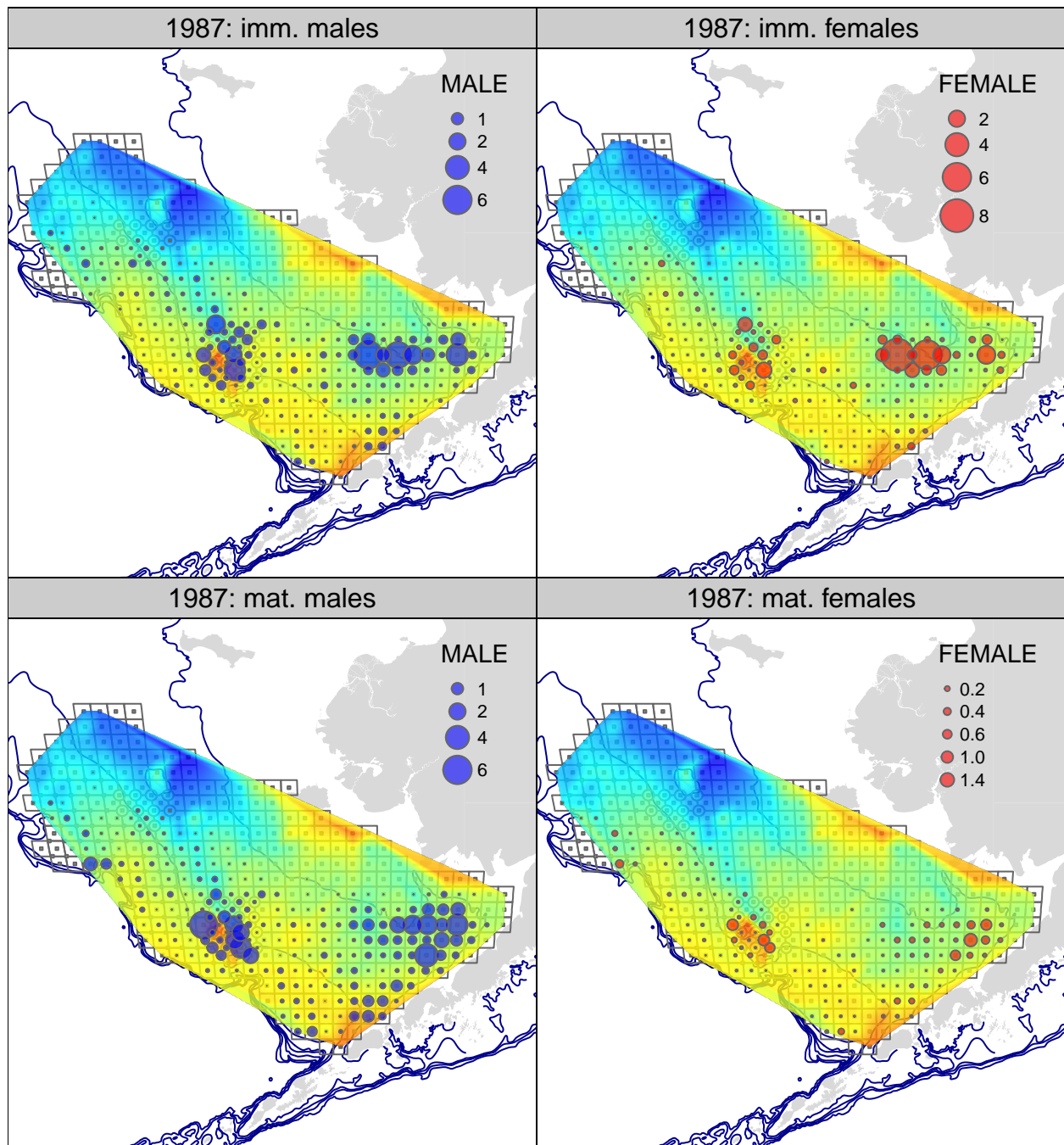


Figure 14: Tanner crab CPUE (biomass) from the 1987 NMFS EBS bottom trawl survey. upper row: immature crab; lower row: mature crab; lefthand column: males; righthand column: females.

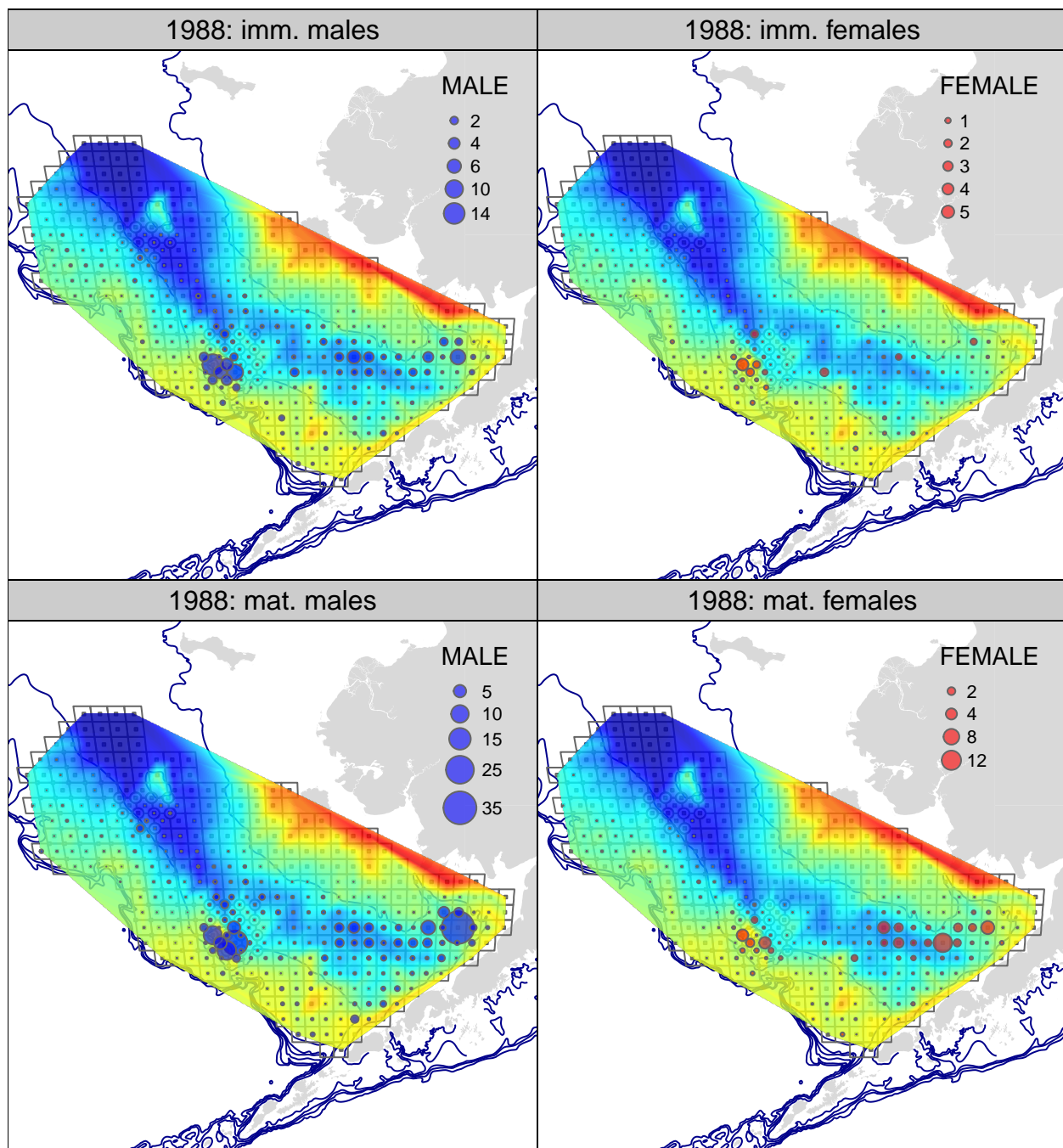


Figure 15: Tanner crab CPUE (biomass) from the 1988 NMFS EBS bottom trawl survey. upper row: immature crab; lower row: mature crab; lefthand column: males; righthand column: females.

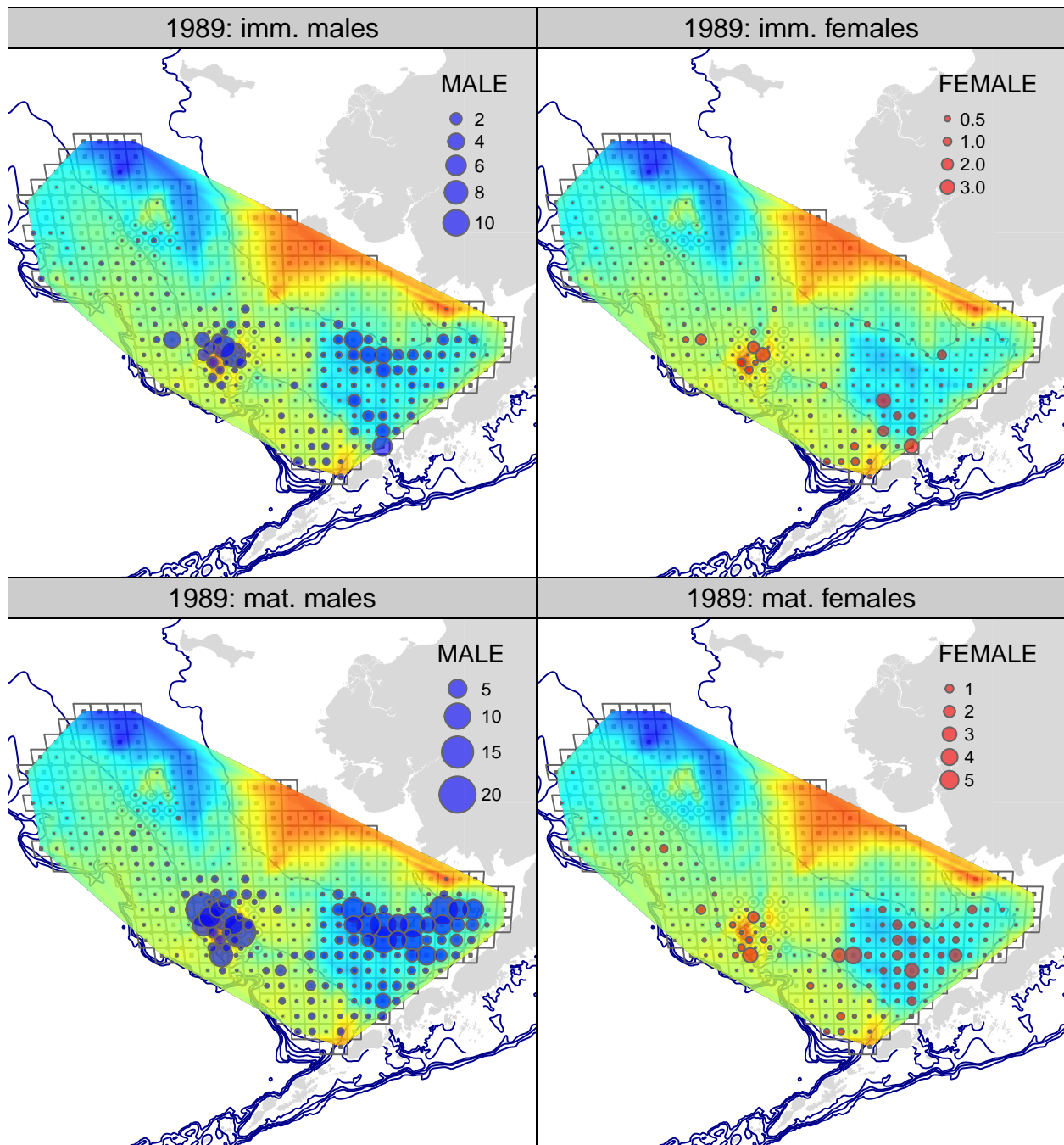


Figure 16: Tanner crab CPUE (biomass) from the 1989 NMFS EBS bottom trawl survey. upper row: immature crab; lower row: mature crab; lefthand column: males; righthand column: females.

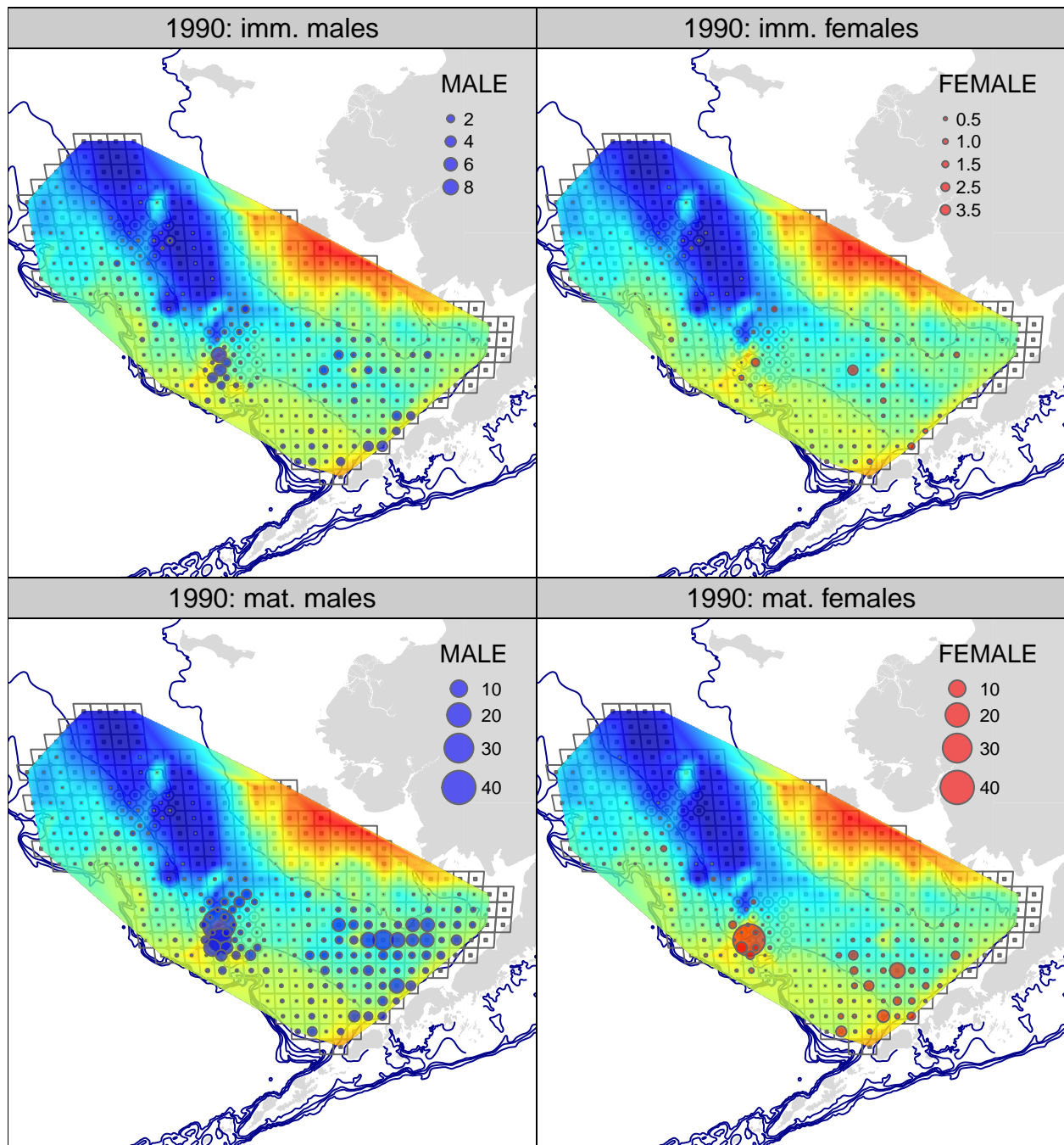


Figure 17: Tanner crab CPUE (biomass) from the 1990 NMFS EBS bottom trawl survey. upper row: immature crab; lower row: mature crab; lefthand column: males; righthand column: females.

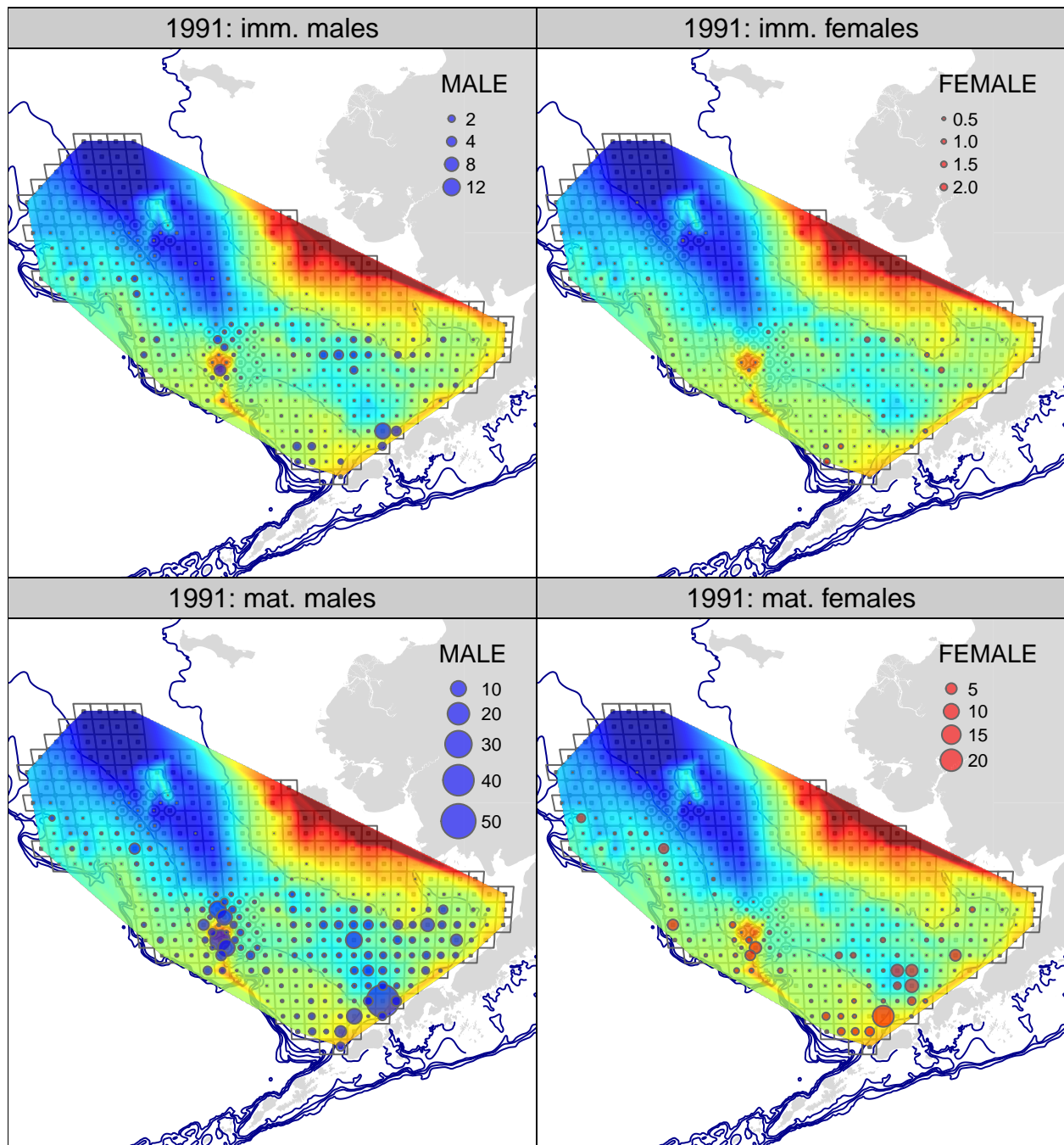


Figure 18: Tanner crab CPUE (biomass) from the 1991 NMFS EBS bottom trawl survey. upper row: immature crab; lower row: mature crab; lefthand column: males; righthand column: females.