

Figure 37: Tanner crab CPUE (biomass) from the 2010 NMFS EBS bottom trawl survey. upper row: immature crab; lower row: mature crab; lefthand column: males; righthand column: females.

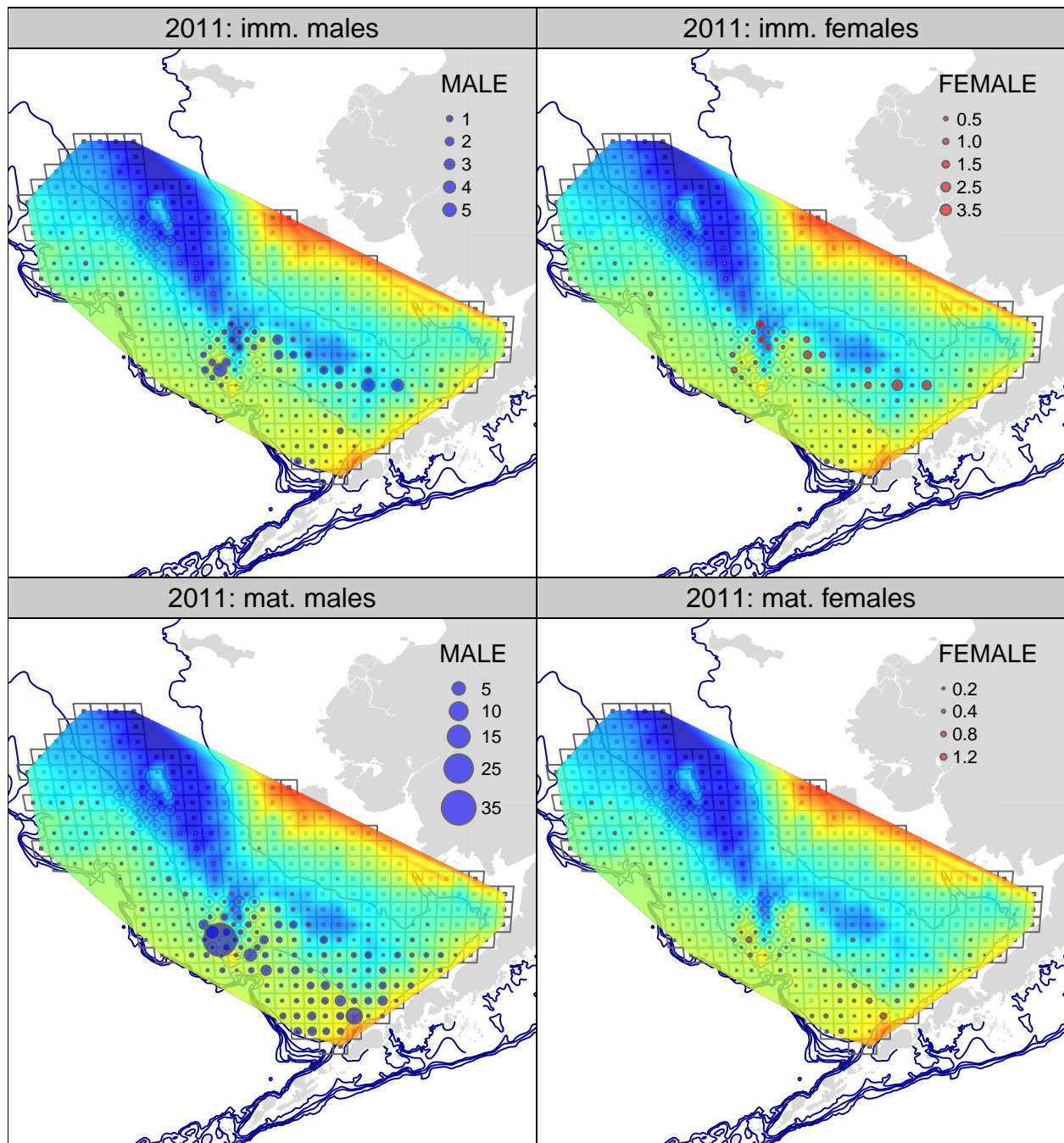


Figure 38: Tanner crab CPUE (biomass) from the 2011 NMFS EBS bottom trawl survey. upper row: immature crab; lower row: mature crab; lefthand column: males; righthand column: females.

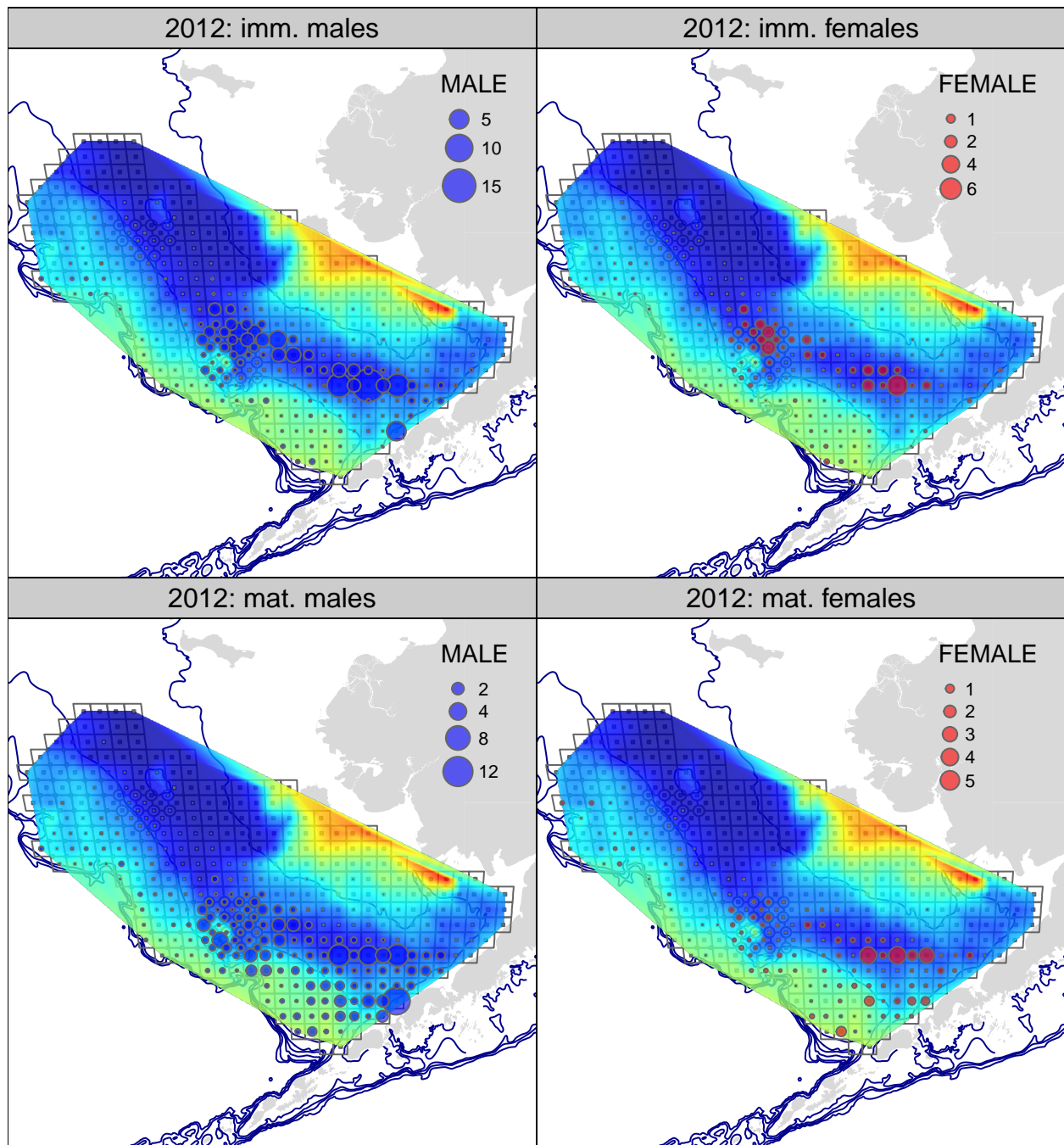


Figure 39: Tanner crab CPUE (biomass) from the 2012 NMFS EBS bottom trawl survey. upper row: immature crab; lower row: mature crab; lefthand column: males; righthand column: females.

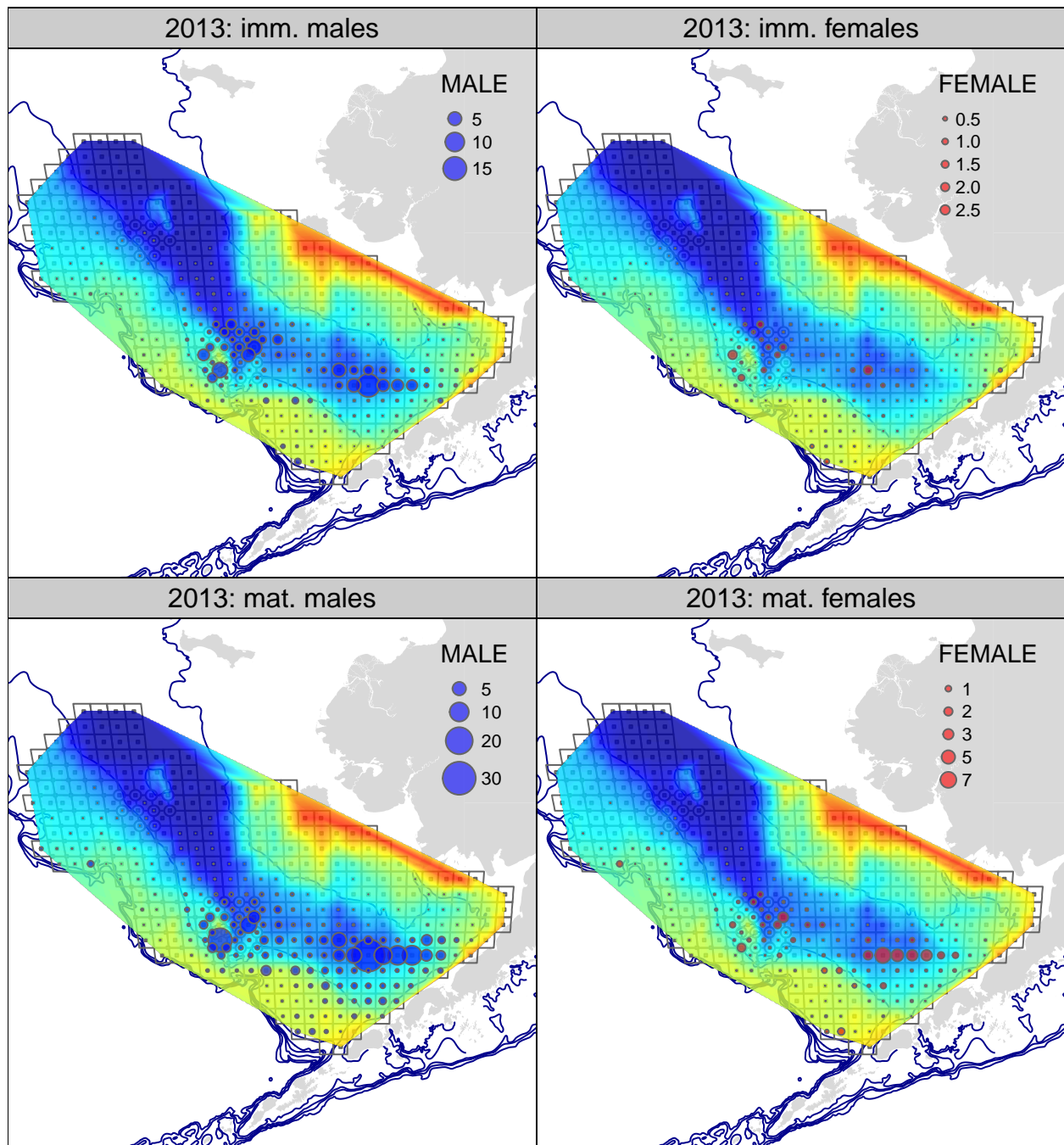


Figure 40: Tanner crab CPUE (biomass) from the 2013 NMFS EBS bottom trawl survey. upper row: immature crab; lower row: mature crab; lefthand column: males; righthand column: females.

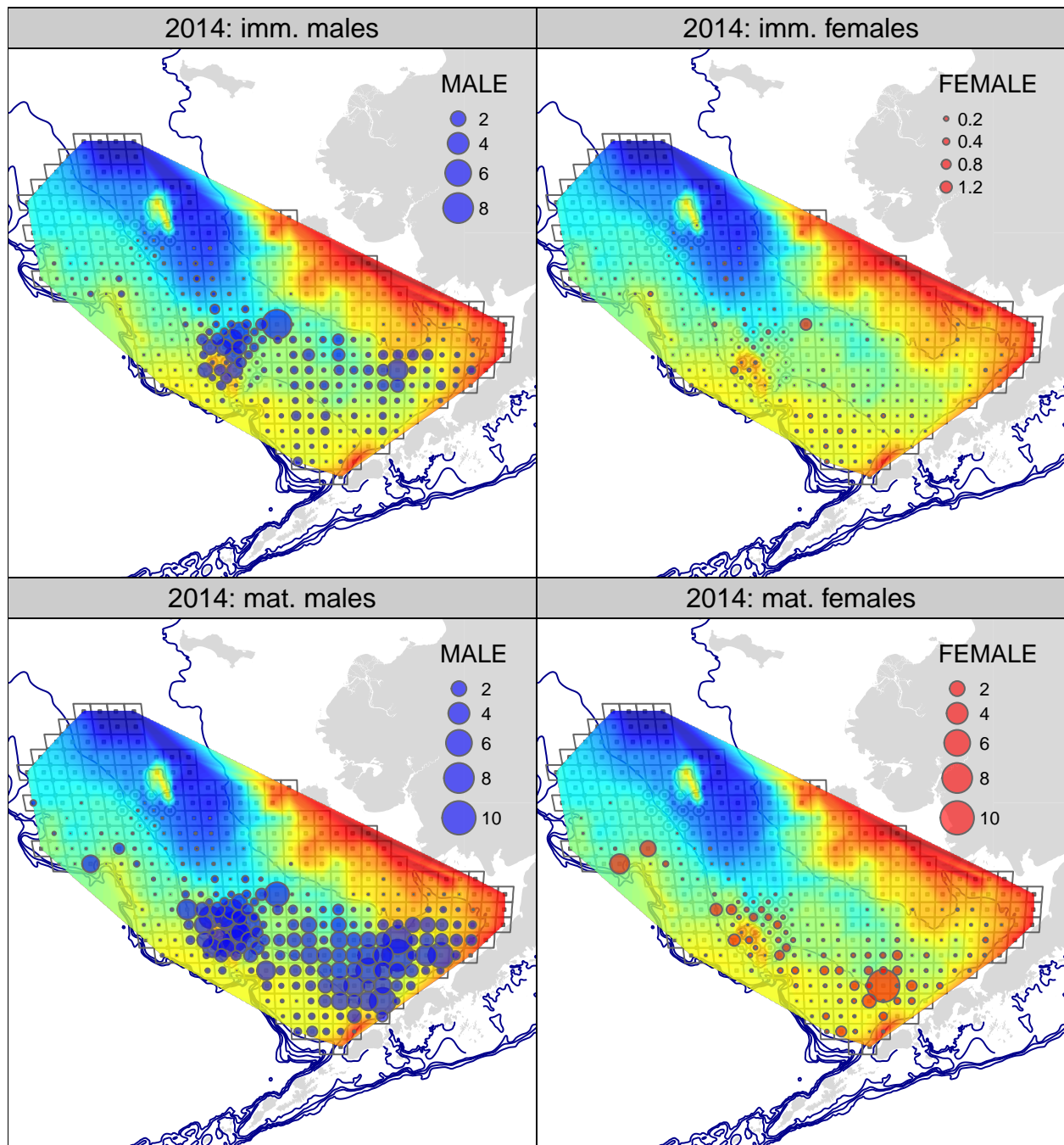


Figure 41: Tanner crab CPUE (biomass) from the 2014 NMFS EBS bottom trawl survey. upper row: immature crab; lower row: mature crab; lefthand column: males; righthand column: females.

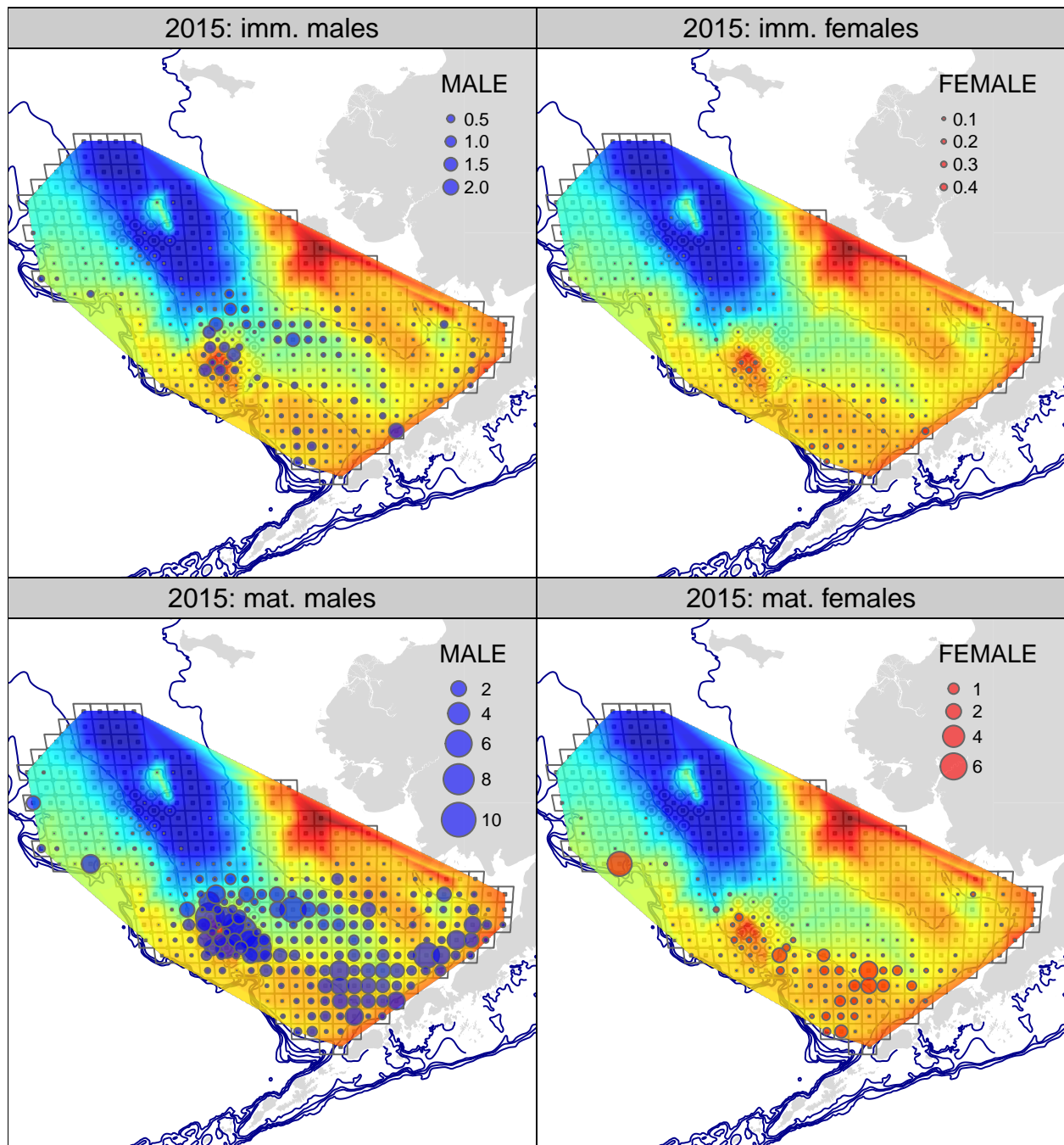


Figure 42: Tanner crab CPUE (biomass) from the 2015 NMFS EBS bottom trawl survey. upper row: immature crab; lower row: mature crab; lefthand column: males; righthand column: females.

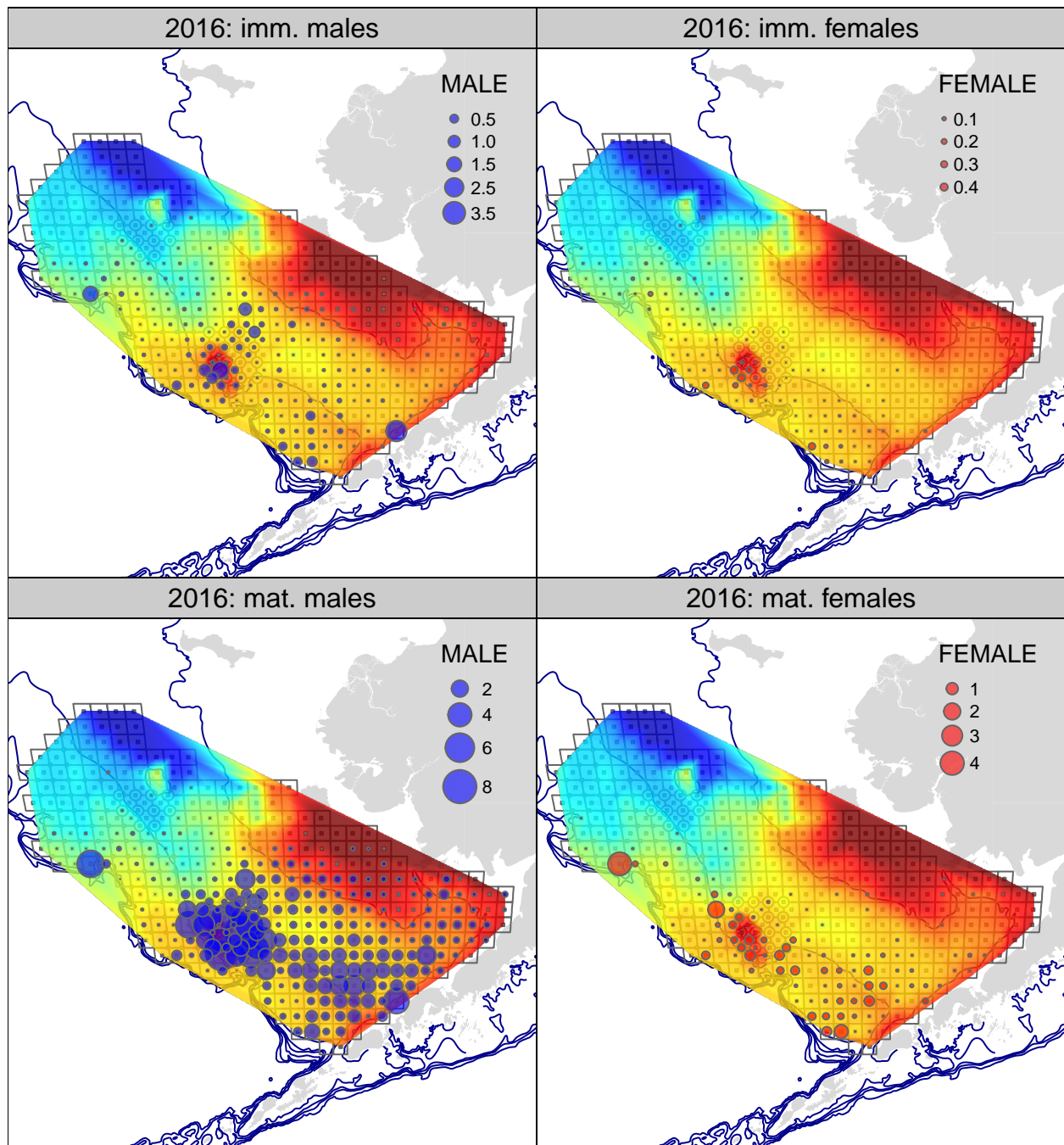


Figure 43: Tanner crab CPUE (biomass) from the 2016 NMFS EBS bottom trawl survey. upper row: immature crab; lower row: mature crab; lefthand column: males; righthand column: females.

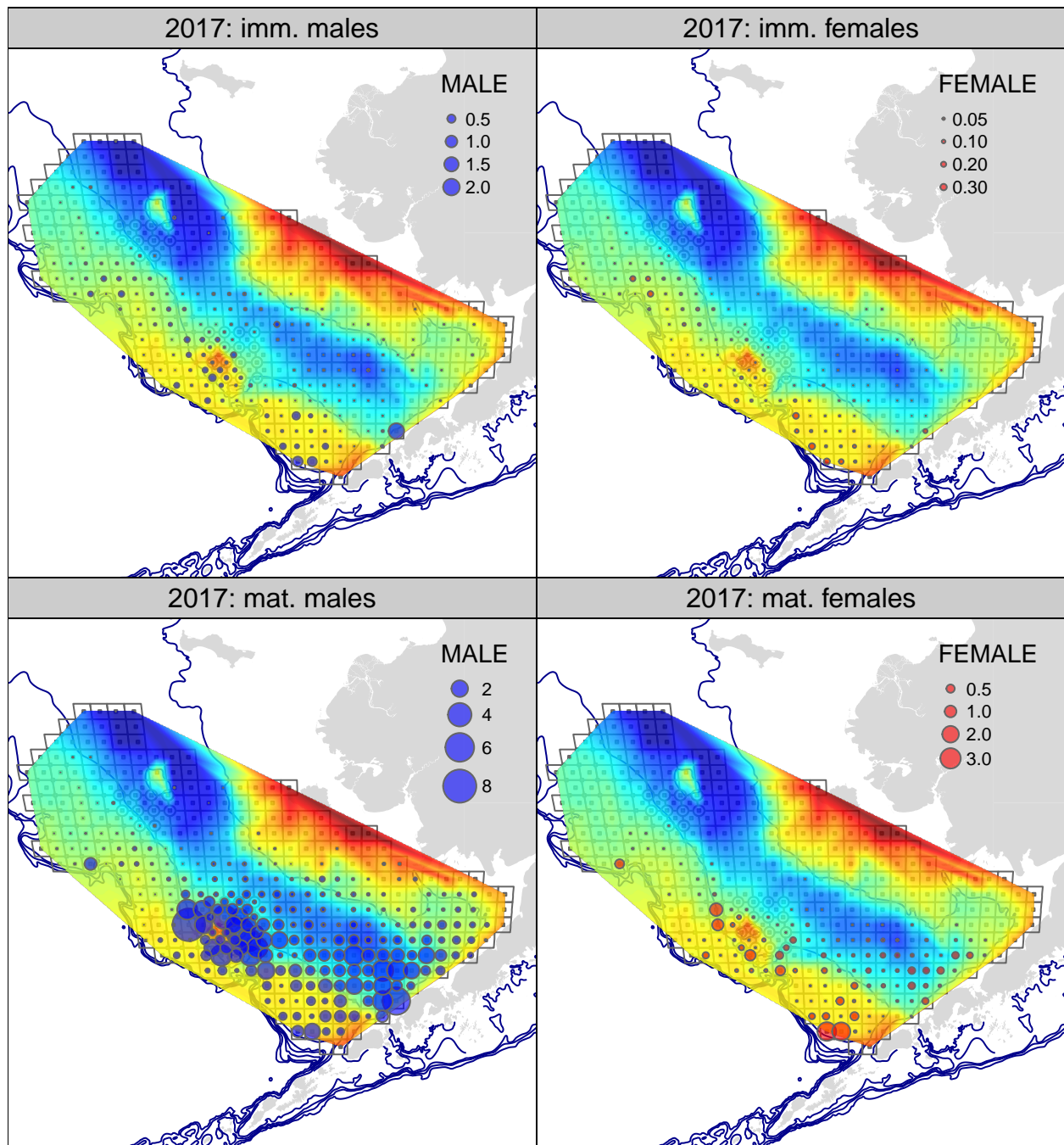


Figure 44: Tanner crab CPUE (biomass) from the 2017 NMFS EBS bottom trawl survey. upper row: immature crab; lower row: mature crab; lefthand column: males; righthand column: females.

Legal-sized males

The following maps present survey CPUE (in biomass) for immature and mature components of the Tanner crab stock by sex superimposed on bottom temperature at the time of the survey for each year of the NMFS bottom trawl survey.

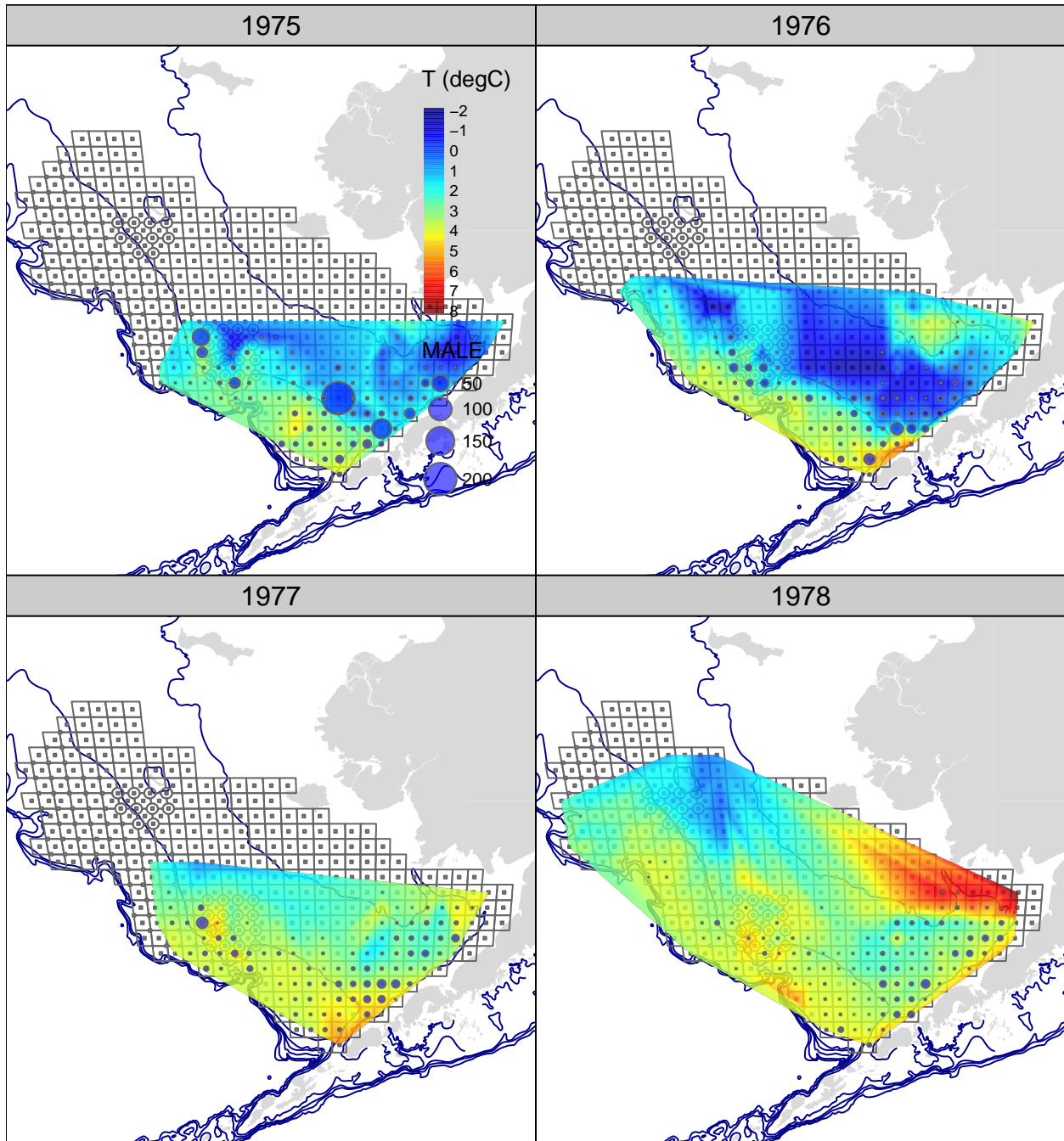


Figure 45: Survey CPUE (biomass) for legal-sized male Tanner crab. Page 1 of 11

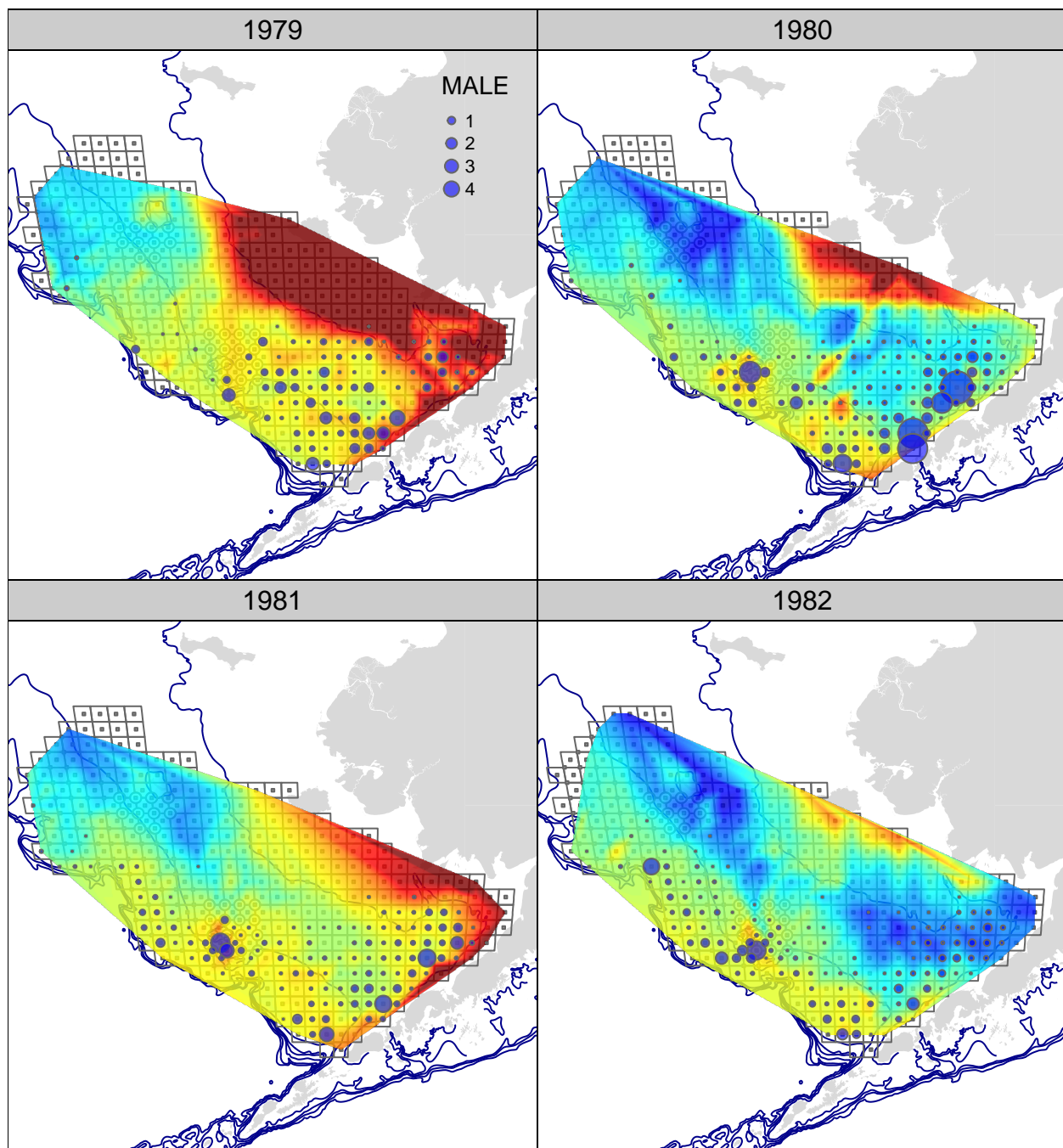


Figure 46: Survey CPUE (biomass) for legal-sized male Tanner crab. Page 2 of 11

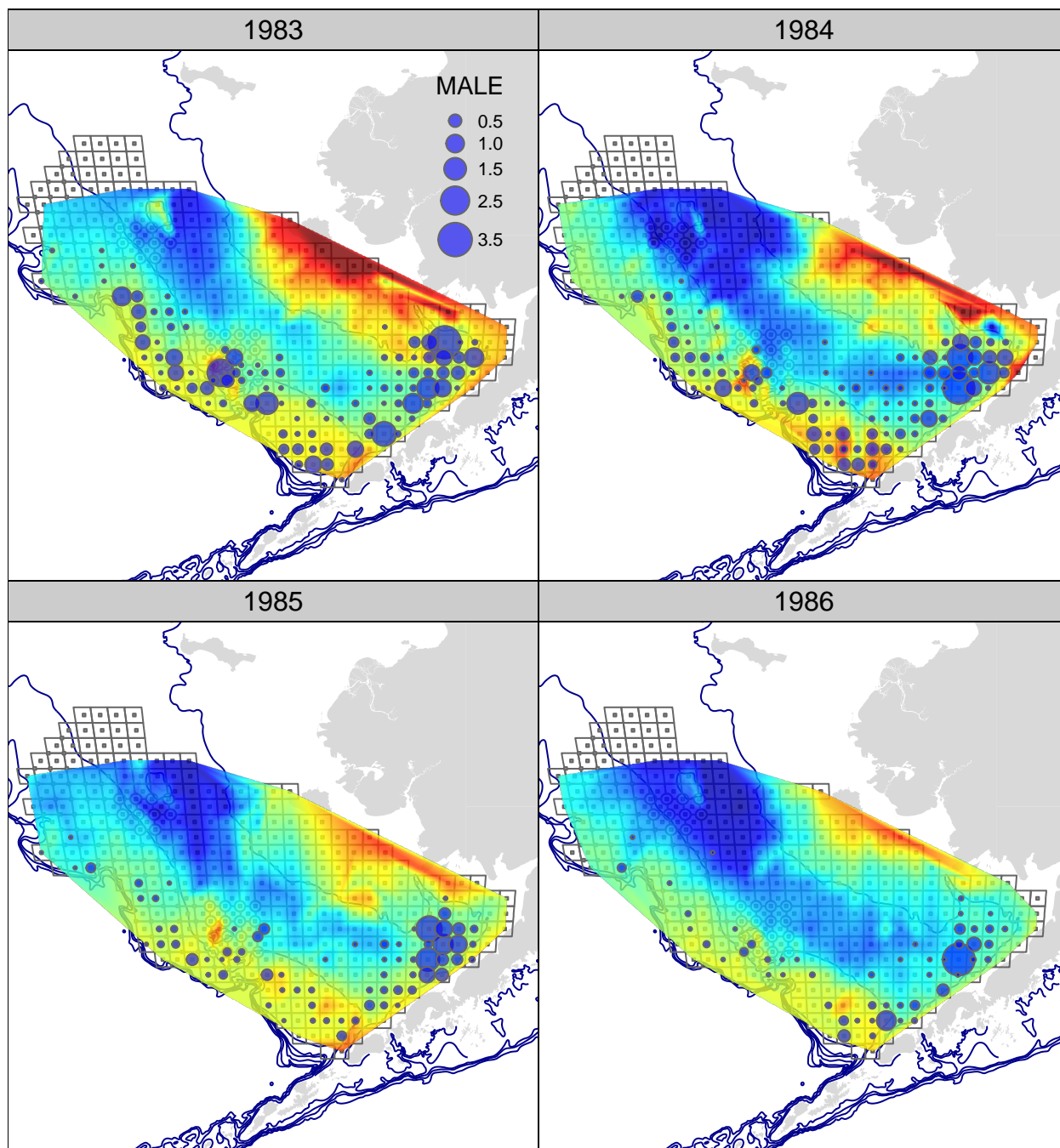


Figure 47: Survey CPUE (biomass) for legal-sized male Tanner crab. Page 3 of 11

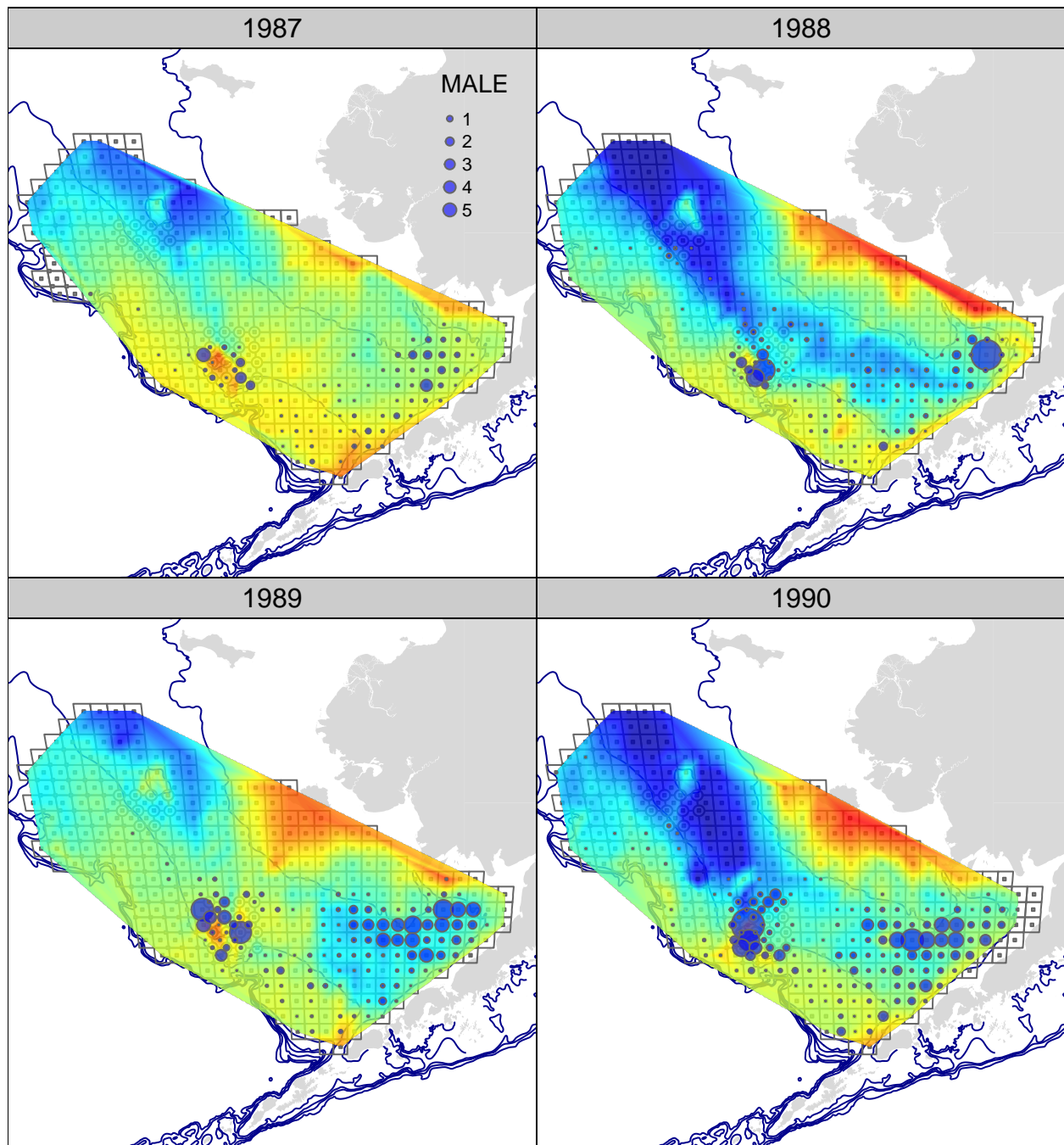


Figure 48: Survey CPUE (biomass) for legal-sized male Tanner crab. Page 4 of 11

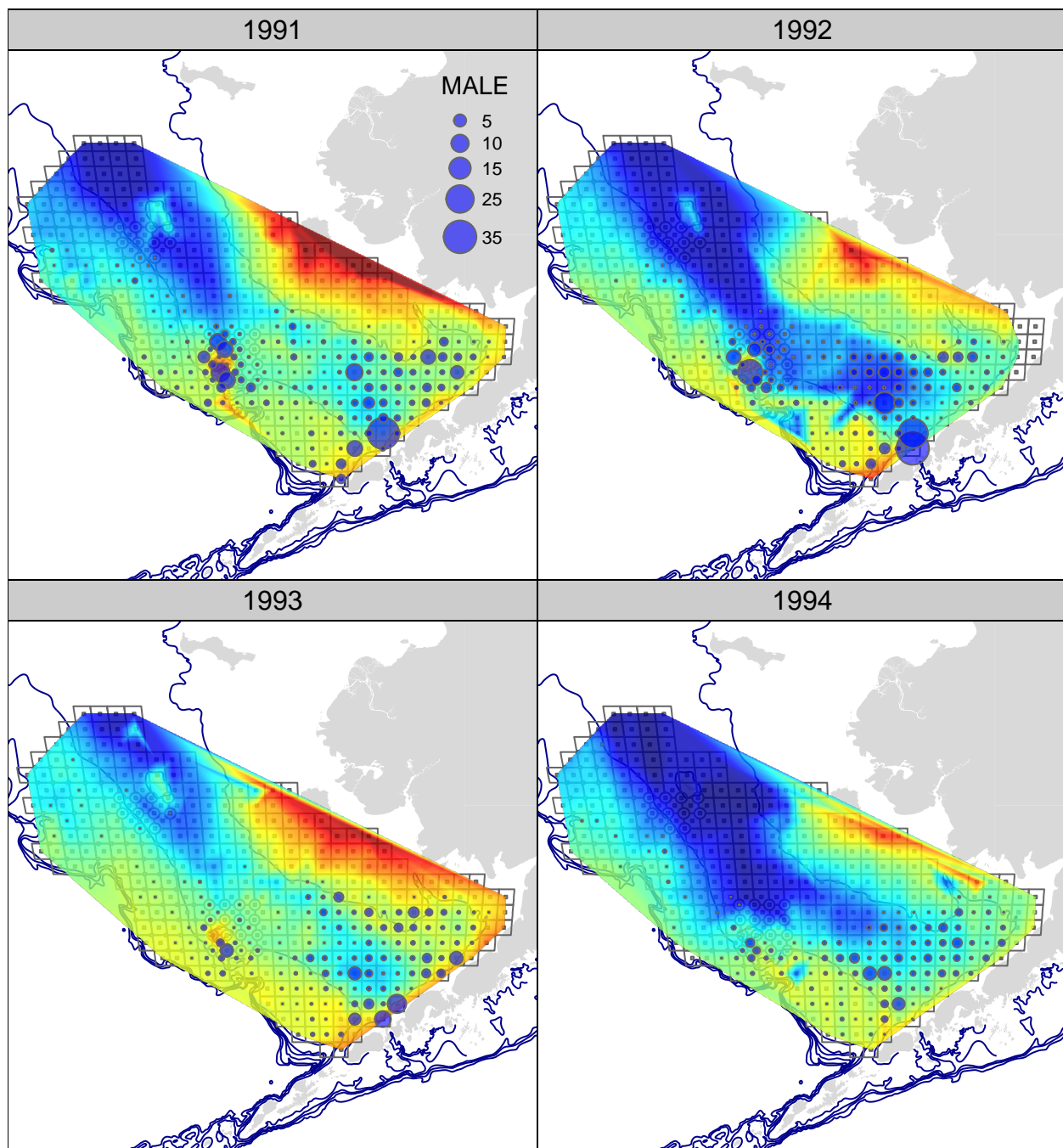


Figure 49: Survey CPUE (biomass) for legal-sized male Tanner crab. Page 5 of 11

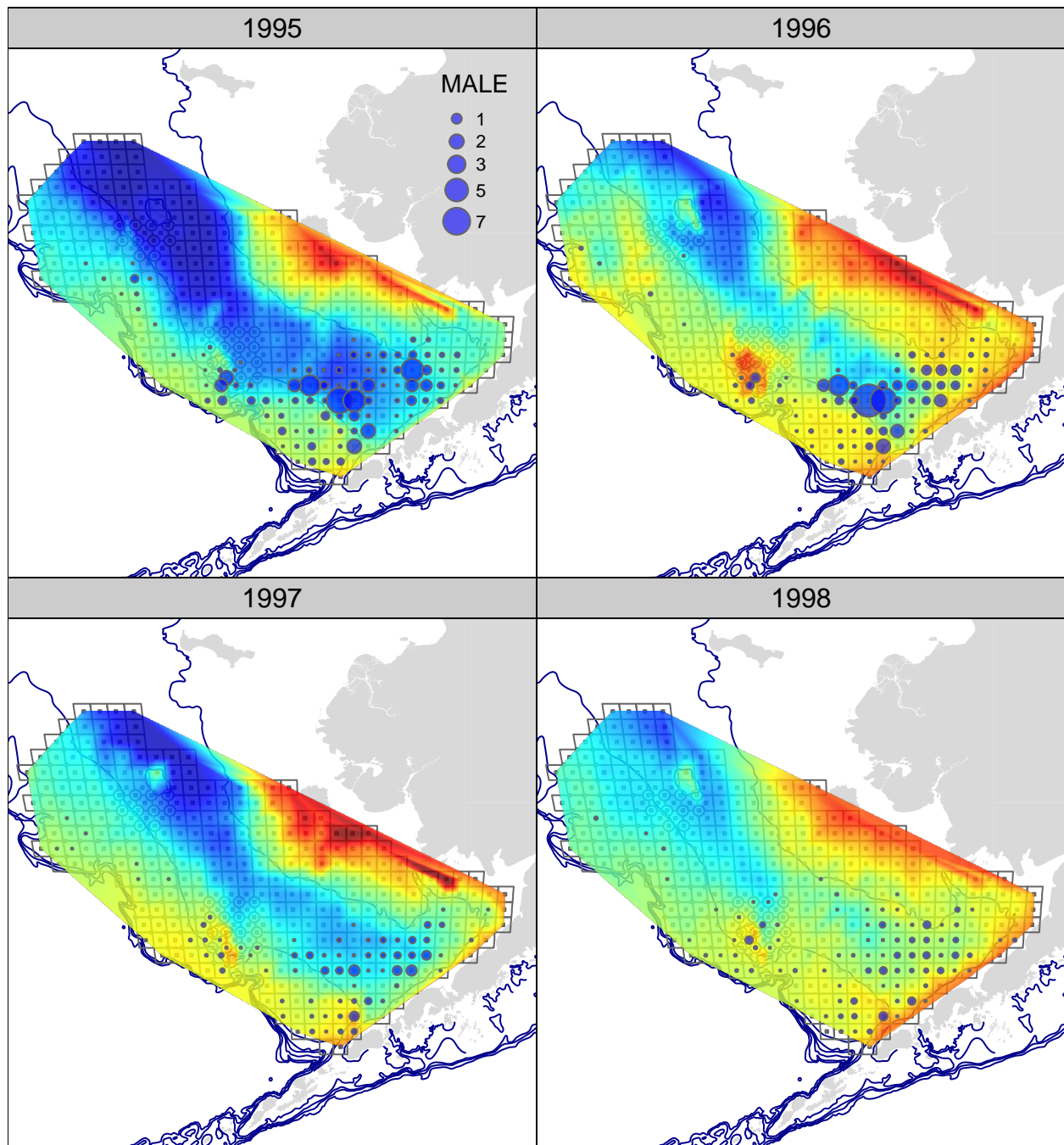


Figure 50: Survey CPUE (biomass) for legal-sized male Tanner crab. Page 6 of 11

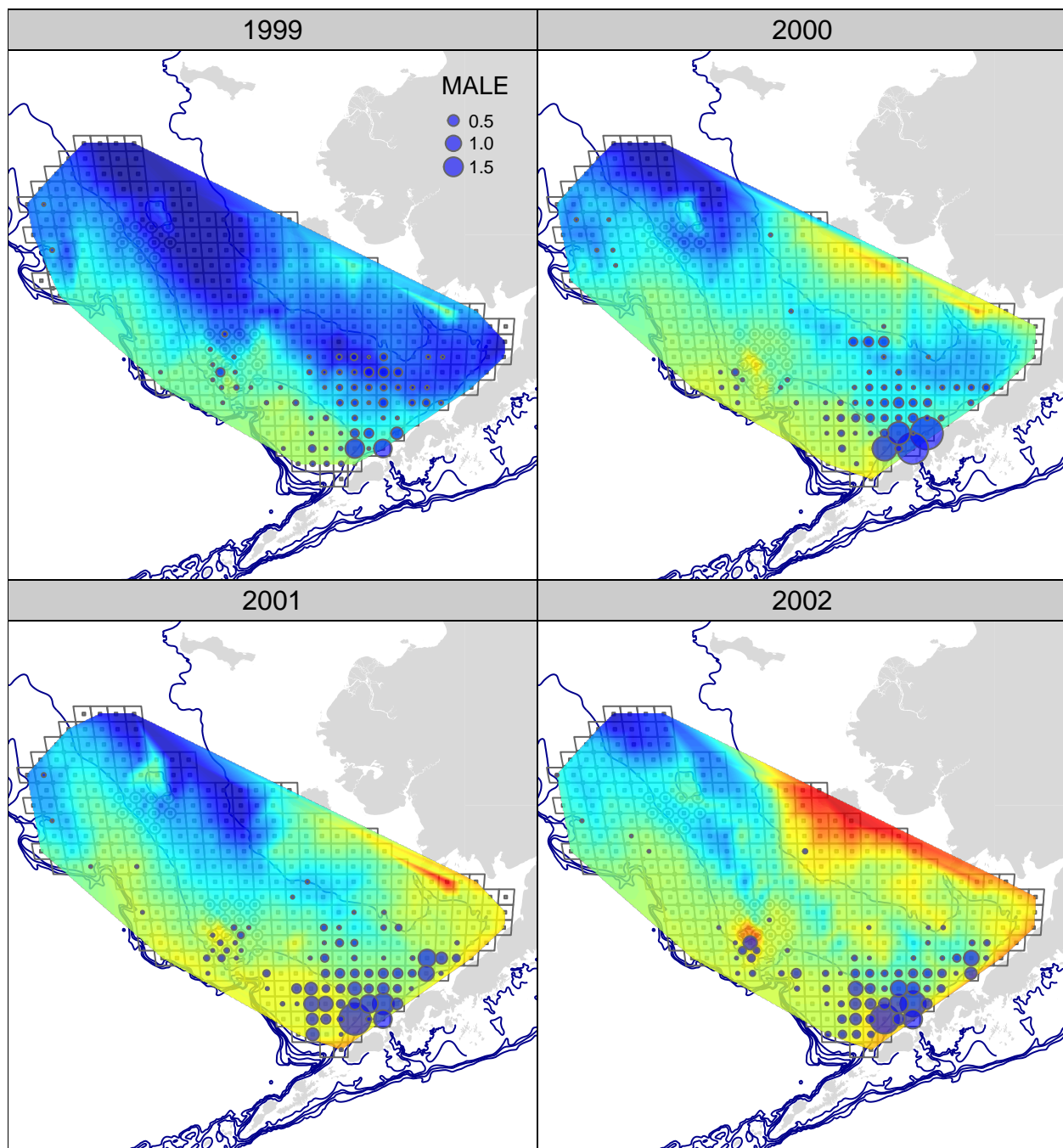


Figure 51: Survey CPUE (biomass) for legal-sized male Tanner crab. Page 7 of 11

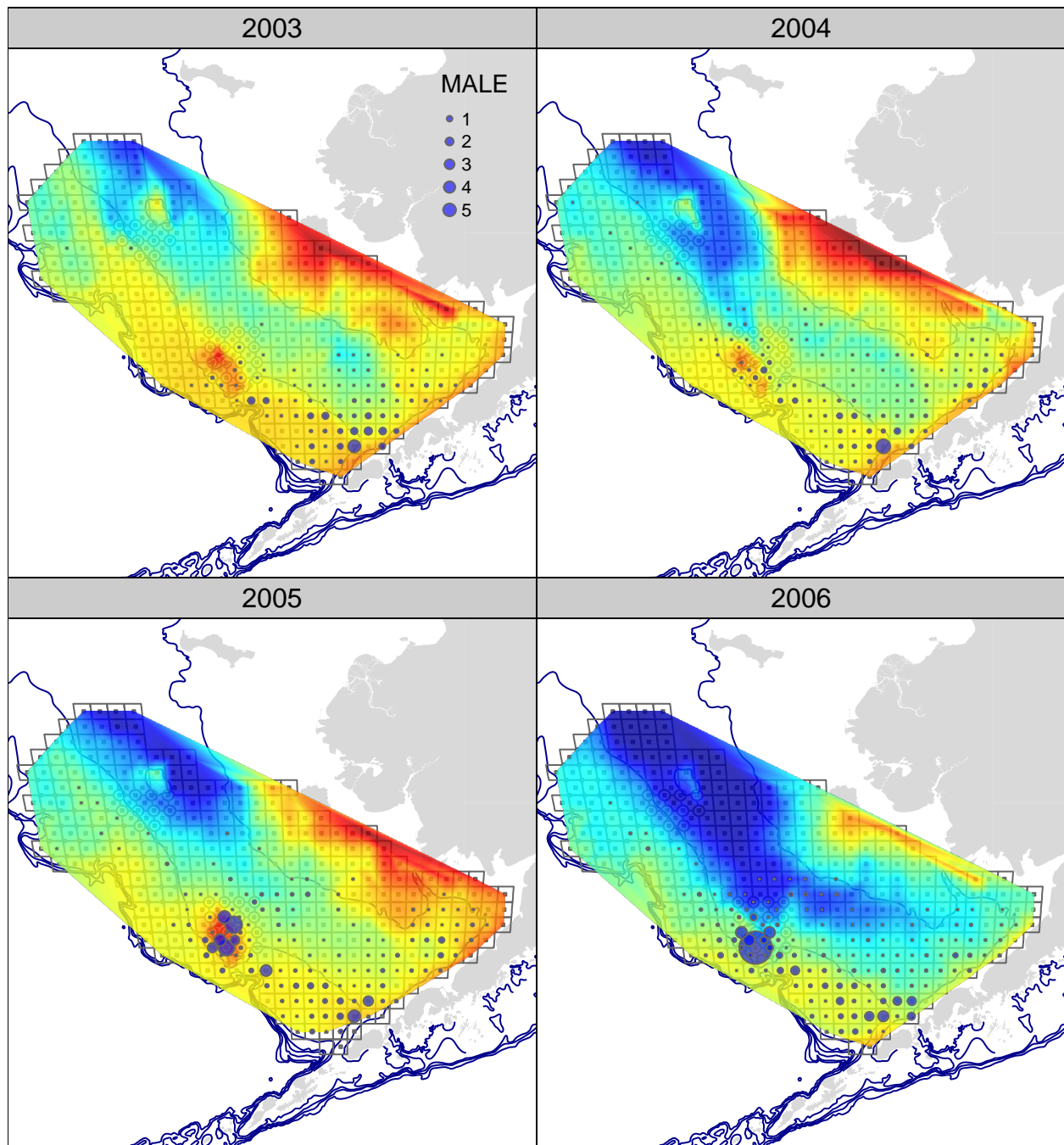


Figure 52: Survey CPUE (biomass) for legal-sized male Tanner crab. Page 8 of 11

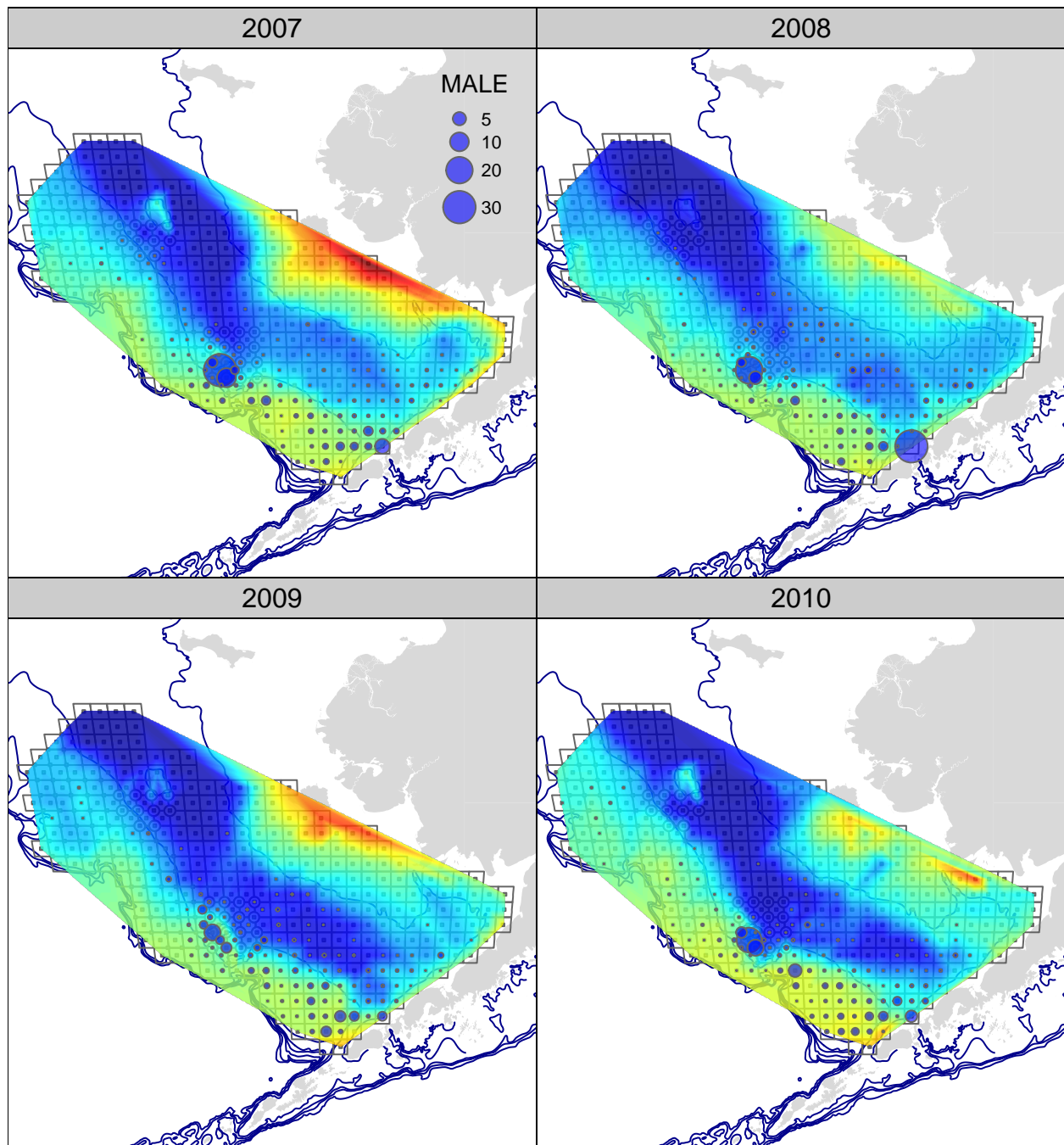


Figure 53: Survey CPUE (biomass) for legal-sized male Tanner crab. Page 9 of 11

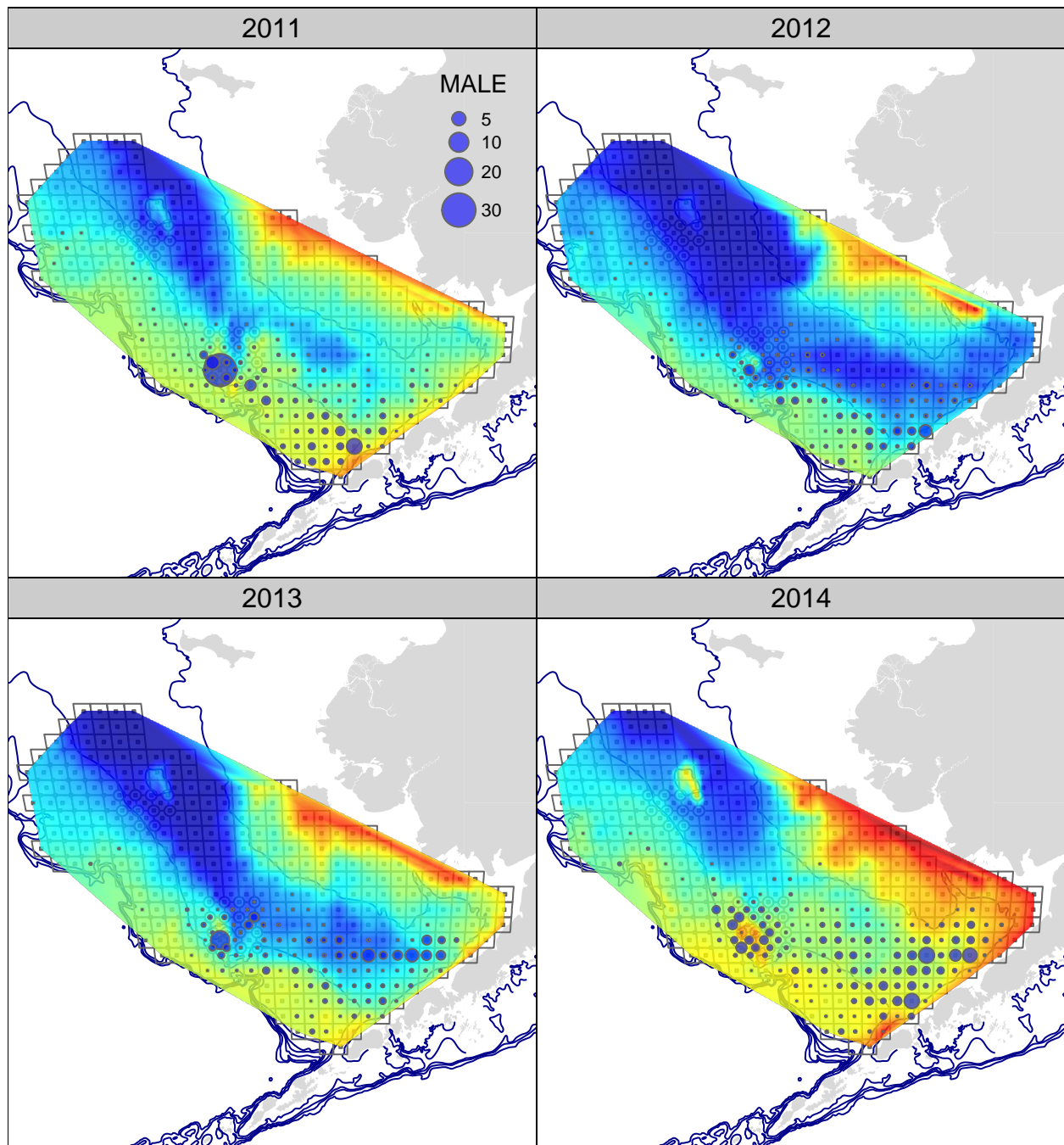


Figure 54: Survey CPUE (biomass) for legal-sized male Tanner crab. Page 10 of 11

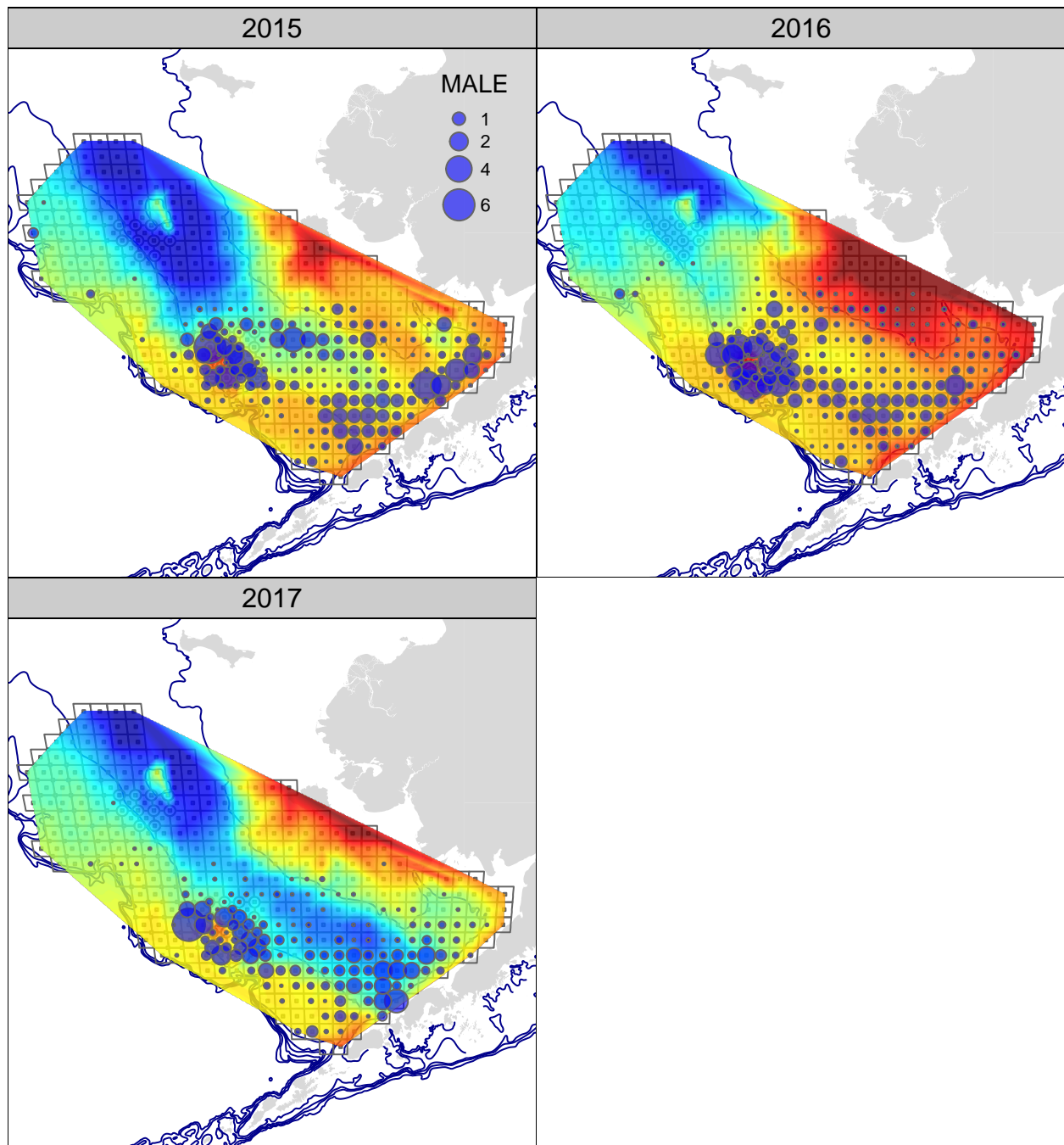


Figure 55: Survey CPUE (biomass) for legal-sized male Tanner crab. Page 11 of 11