



C7: ANALYSIS OF MANAGEMENT MEASURES FOR THE AREA 2C AND 3A CHARTER HALIBUT FISHERIES FOR 2026

ADAM ST. SAVIOUR - DECEMBER 2025

PRELIMINARY CHARTER ESTIMATES FOR 2025

IPHC				Release	Total			
Area	Mean Wt lb	Harvest	Yield lb	Mortality	Removals	Allocation	Overage	Overage
		Num Fish		lb	lb	lb	lb	pct
Area_2C	9.20	76,683	705,484	28,336	733,820	720,000	13,820	1.9%
Area_3A	9.83	140,570	1,381,803	15,294	1,397,097	1,480,000	-82,903	-5.6%

2025 Regulations

2C –

- One fish bag limit
- Reverse slot size limit of less than or equal to 37 inches or greater than or equal to 80 inches
- Tuesdays closed May 13 - September 9 to retention of halibut
- One trip per vessel per day and per charter halibut permit per day

3A –

- Two fish bag limit: one fish of any size, one fish less than or equal to 27 inches
- One trip per vessel per day and per charter halibut permit per day
- Tuesdays and Wednesdays closed to retention of halibut

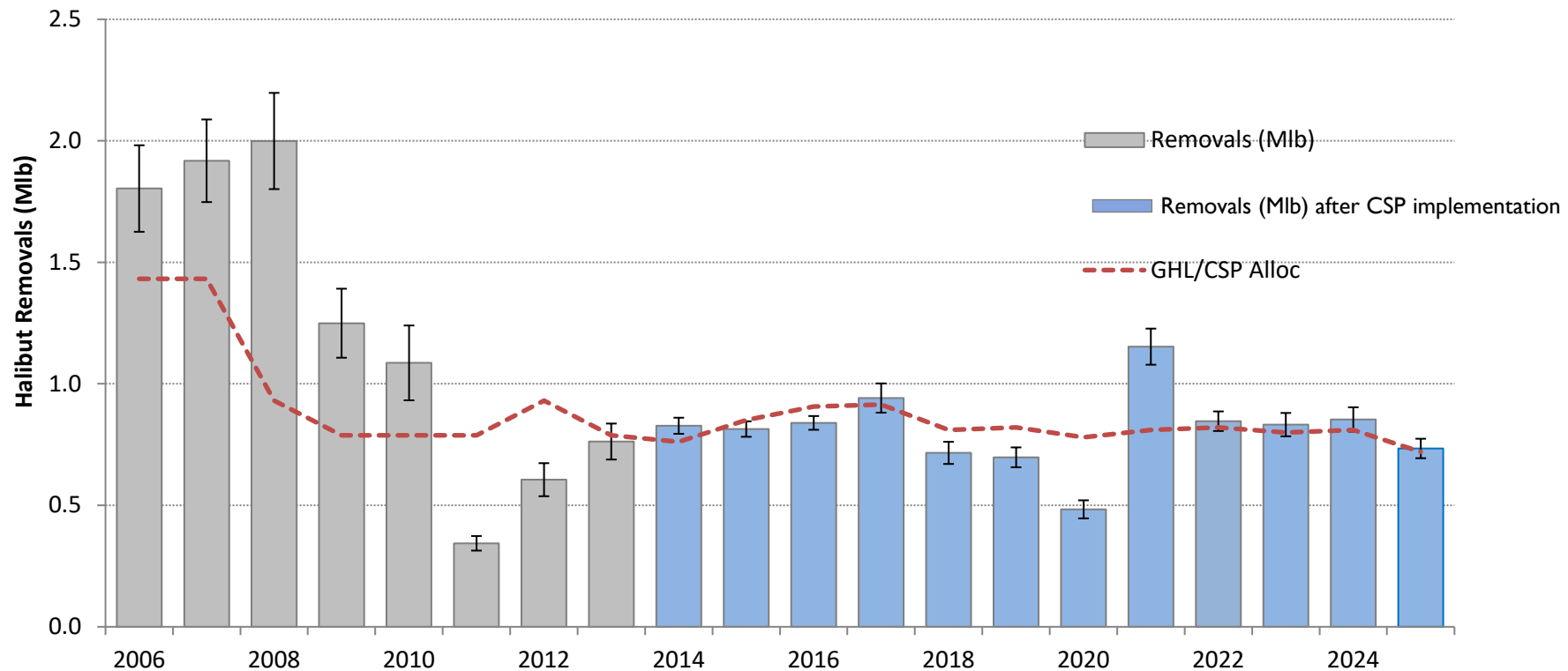
FORECAST VS PRELIMINARY ESTIMATE

			% Diff	
IPHC		Predicted	Prelim	Pred vs
Area	Component	Dec 2024	Oct 2025	Prelim
Area_2C	Harvest_Num_Fish	78,195	76,683	-1.9%
	Mean_Wt_lb	8.78	9.20	4.8%
	Yield_Mlb	0.686	0.705	2.8%
	Release_Mortality_Mlb	0.029	0.028	-3.4%
	Total_Removals_Mlb	0.715	0.734	2.7%
Area_3A	Harvest_Num_Fish	138,670	140,570	1.4%
	Mean_Wt_lb	10.39	9.83	-5.4%
	Yield_Mlb	1.441	1.382	-4.1%
	Release_Mortality_Mlb	0.012	0.015	25.0%
	Total_Removals_Mlb	1.453	1.397	-3.9%

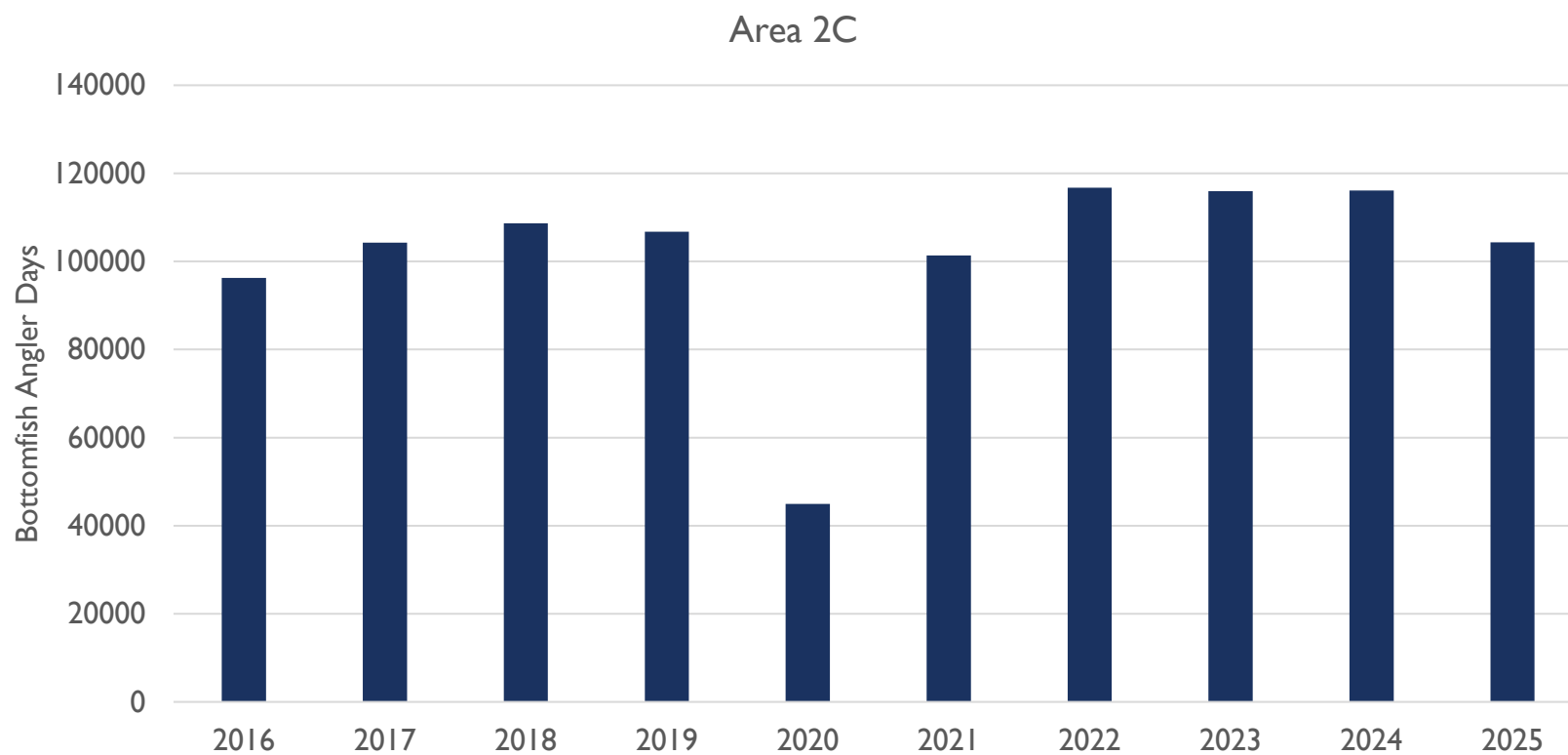


2C CHARTER HALIBUT REMOVALS

Area 2C - Charter

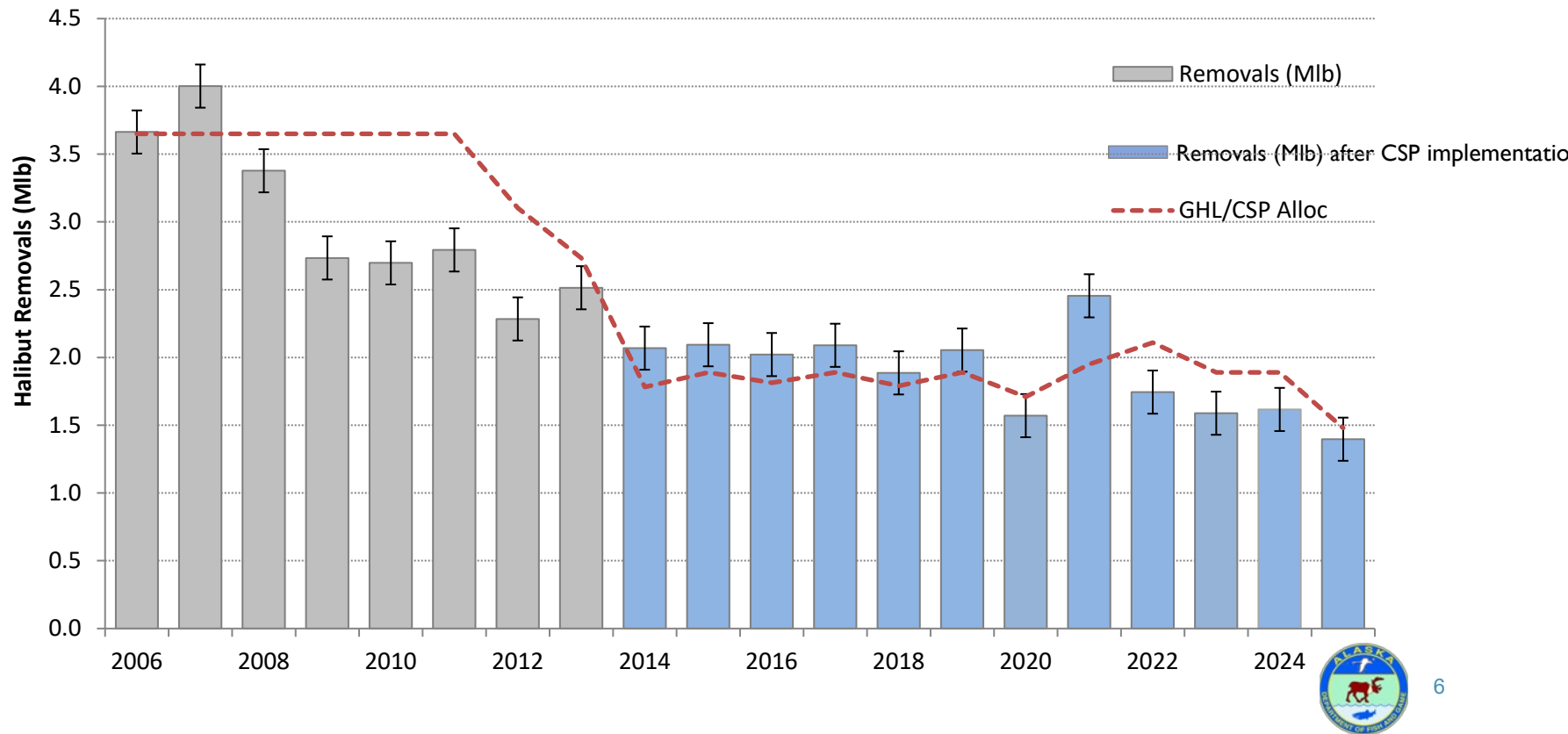


2C EFFORT

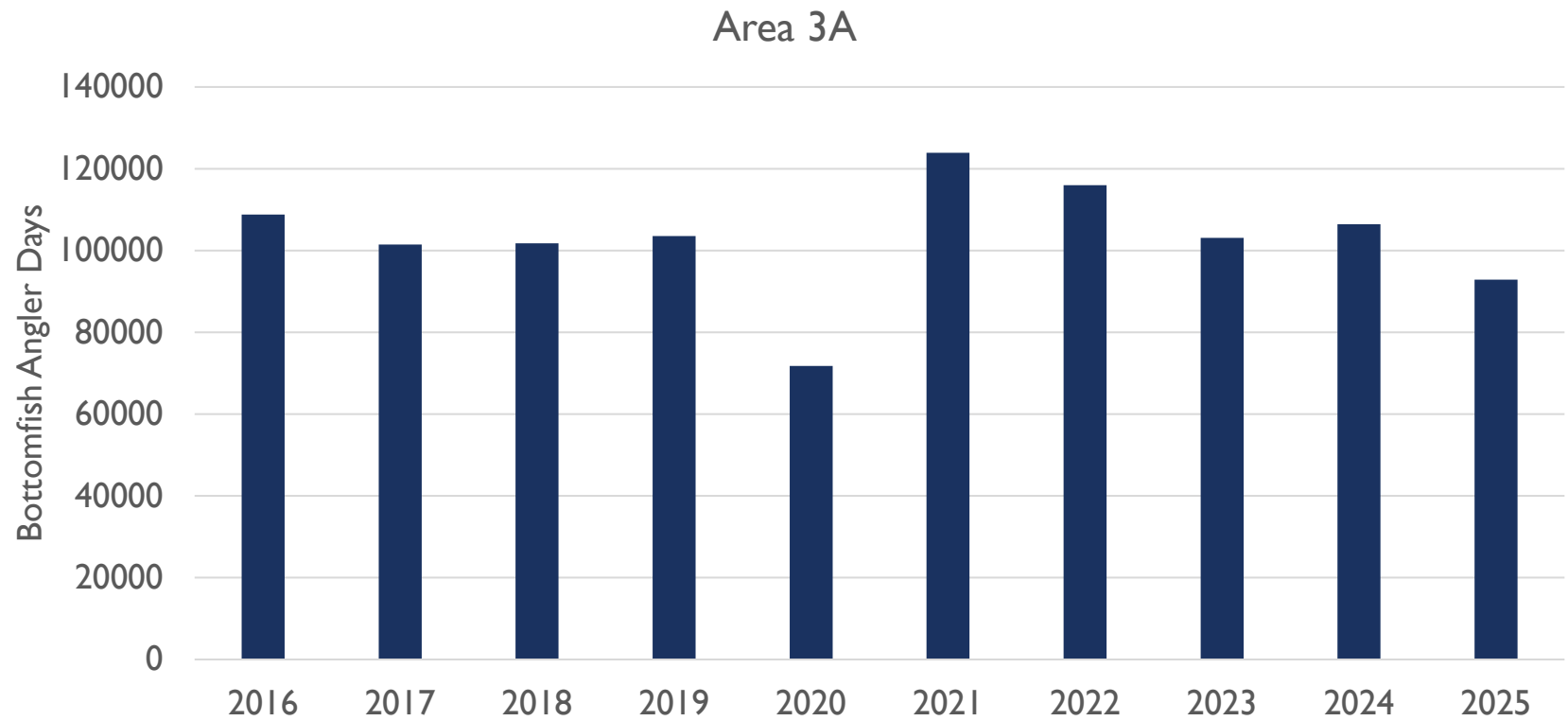


3A CHARTER HALIBUT REMOVALS

Area 3A - Charter



3A EFFORT



BUSINESSES AND VESSELS HARVESTING HALIBUT

Area 2C

Year	Businesses	Vessels
2016	248	532
2017	248	537
2018	244	533
2019	256	545
2020	192	386
2021	232	496
2022	235	523
2023	238	536
2024	238	542
2025	225	556

Area 3A

Year	Businesses	Vessels
2016	240	388
2017	227	374
2018	232	391
2019	226	399
2020	203	343
2021	231	392
2022	220	387
2023	221	396
2024	223	401
2025	212	383





ANALYSIS OF MANAGEMENT MEASURES FOR 2026



CHARTER ALLOCATION FOR 2026

- The IPHC's Regulatory Area TCEYs and allocations for 2026 are currently unknown
- 2025 allocations were used as a reference for this analysis

	2025 Allocation
2C	0.720 MIb
3A	1.480 MIb



2C – STATUS QUO FORECAST

- Table 2C.3
- 79,691 halibut
 - 95% confidence interval + - 2,325
- Used preliminary 2025 effort as 2026 forecast
- HPUE used data from 2009 – 2019 and 2022-2025



2C – STATUS QUO FORECAST

Table 2C.3 (continued)

Status Quo Regulations:

- One fish bag limit
- Reverse slot limit of less than or equal to 37 or greater than or equal to 80 inches;
- Tuesdays closed May 13 to September 9;
- 1 trip per permit and per vessel per day
- Projected average weight: 8.75 lbs
- Release mortality: 28,580 lbs

**Status Quo
Regulations
Removals
Projection**

0.726 Mlb



2C – MANAGEMENT MEASURES FOR 2026

- **Reverse Slot** ranging from 32 – 50 inches on the low end and 50 – 80 inches on the upper end
 - Same Reverse Slot and a limit **one trip per vessel and permit per day**.
- **Day Closures:** Reverse Slot lower slot limits ranging from 32 inches to 50 inches, and an upper slot limit of 80 inches with Wednesday, Thursday, and Saturday **day closures** and savings in removals displayed for each day of closure
 - Analyzed for each day from May 15 – September 15 or for the entire season
 - Same Reverse Slot and day closures with a limit of **one trip per vessel and one trip per permit per day**.
- **Annual Limit:** Reverse Slot ranging from 32 – 50 inches on the low end and 50 – 80 inches on the upper end with an **annual limit** of 3 fish and an annual limit of 2 fish.



2C – REVERSE SLOT LIMIT

- Table 2C.4
- Harvest projection is for all days open throughout the season
- Lower limits of 32 – 50 inches, upper limits of 50 – 80 inches
- Removal estimates range from 0.679 Mlb to 1.903 Mlb
- Some combinations of lower limits 32 –33 inches and upper limit of 74 – 80 inches are below the 2025 allocation

**Options Below 2025
Allocation (0.720 Mlb)?**

Yes

2C – REVERSE SLOT LIMIT WITH ONE TRIP PER DAY

- Table 2C.5
- Trip limit Saves ~ 2,600 fish
- Removal estimates range from 0.662 Mlb to 1.858 Mlbs.
- Some combinations of lower limits 32 –33 inches and upper limit of 74 – 80 inches are below the 2025 allocation

Options Below 2025
Allocation (0.720 Mlb)?

Yes

2C – REVERSE SLOT LIMIT WITH DAILY SAVINGS

- Table 2C.6 a-c
 - Wednesdays, Thursdays, and Saturdays
- Results are presented as daily savings in pounds (not Mlb)
- Lower limits of reverse slot 32 – 50 inches, upper limit of 80 inches
- Lower slots 33 inches and less were below the 2025 allocation without any day closures
- Maximum projected savings on Thursdays
- Closing at least 17 Thursdays is projected to save the necessary 108,788 lb (at the U37O80 slot limit) to get below the 2025 allocation

**Options Below 2025
Allocation (0.720 Mlb)?**

Yes



2C – REVERSE SLOT LIMIT WITH DAILY SAVINGS AND A ONE TRIP LIMIT

- Table 2C.7 a-c
 - Wednesdays, Thursdays, and Saturdays
- Lower slots 33 inches and less were below the 2025 allocation without any day closures
- Savings = 22,077 lb at U37O80 with no day closures

	Trip Limits
SWHS	Proportional decrease
A	6.7%
B	2.2%
C	1.8%
D	0.3%
EF	5.7%
G2C	2.9%
2C total	2.7%

Options Below 2025 Allocation (0.720 Mlb)?

Yes



2C – REVERSE SLOT LIMIT WITH ANNUAL LIMIT OF 3 FISH AND AN ANNUAL LIMIT OF 2 FISH

- Table 2C.8
- Harvest projection is for all days open throughout the season
- Lower limits of 32 – 50 inches, upper limits of 50 – 80 inches
- Removal estimates range from 0.657 Mlb to 1.836 Mlb
- Some combinations of lower limits 32 –33 inches and upper limit of 72 – 80 inches are below the 2025 allocation
- Annual limit of 3 saves ~ 28,000 lb at U37O80
- Annual limit of 2 saves ~ 161,000 lb at U37O80

**Options Below 2025
Allocation (0.720 Mlb)?**

Yes

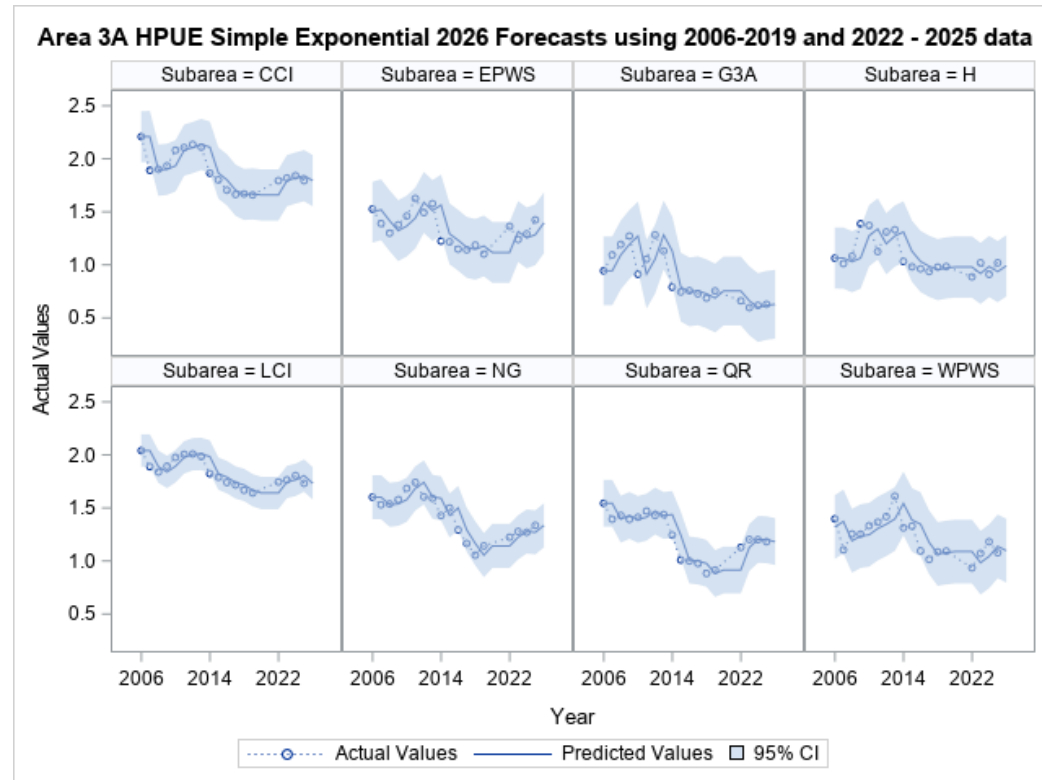
2C – SUMMARY

Management Measures	Options Below 2025 Allocation (0.720 Mlb)?
Status Quo: reverse slot with lower limit of 37 inches and upper limit of 80 inches, Tuesdays closed May 13 to September 9 and a limit of one trip per vessel and CHP per day – 0.726 Mlb	No
Reverse slot limit with U32-U50 on the low end and O50-O80 on the high end. Additional savings for a one-trip limit	Yes
Reverse slot limit with U32-U50 on the low end and O80 on the high end, analyzed with a day of the week closures presented in savings per day. Additional savings for a one-trip limit	Yes
Reverse slot limit with U32-U50 on the low end and O50-O80 on the high end with an annual limit of 3 fish and an annual limit of 2 fish	Yes



3A – STATUS QUO FORECAST

- Table 3A.11
- 145,660 halibut
 - 95% confidence interval + - 4,137
 - 2025 effort was used as forecast
 - HPUE forecast used data through 2019 and 2022-2025



3A – STATUS QUO FORECAST

Table 3A.11 continued

Status Quo Regulations:

- Two fish bag limit: one any size, one less than or equal to 27 inches
- One trip per vessel per day and per charter halibut permit per day
- Tuesdays and Wednesdays closed to retention of halibut

Observed Mean Weight 2025 = 9.83 lb

Mean Weight in Forecast = 9.74 lb

**Status Quo
Regulations
Removals
Projection**

1.430 Mlb



3A – MANAGEMENT MEASURES FOR 2026

- Maximum size limits of 26 – 32 inches on one fish;
- **Day of the week closures on Tuesdays** from April 1 – October 6 or for the entire season;
- In addition to Tuesday closures, **seasonal open/ close dates** weekly May 1 – June 1 and September 1 – October 1 under a range of maximum size limits on one fish in the bag limit;
- A **daily bag limit of one fish of any size** and day of the week closures on Tuesdays from April 1 – October 6 or for the entire season;
- A daily bag limit of **one fish** of any size and **seasonal open/ close dates** weekly May 1 – June 1 and September 1 – October 1 with Tuesdays closed.



3A – DAY OF THE WEEK CLOSURES ON TUESDAYS

- Table 3A.12
- Assumes a 27-inch size limit on one fish
- Projected removals for up to 27 closed Tuesdays or for the whole season
- Removal estimates range from 1.430 Mlb to 1.721 Mlb

**Options Below 2025
Allocation (1.480 Mlb)?**

Yes



3A – CHANGES TO MAXIMUM SIZE LIMIT COMBINED WITH TUESDAY CLOSURES

- Table 3A.13
- Projected for 26-to-32-inch size limits on one fish
- Projected under various numbers of closed Tuesdays throughout year
- Removal estimates range from 1.403 Mlb to 1.921 Mlb

**Options Below 2025
Allocation (1.480 Mlb)?**

Yes



3A – SEASONAL CLOSURES

- Table 3A.14
- Assumes all Tuesdays and Wednesdays are closed
- Assess seasonal open/ close dates on a weekly basis May and September
- Projected for 26 – 32 inch size limits on one fish
- Removal estimates range from 1.243 Mlb to 1.595 Mlb

**Options Below 2025
Allocation (1.480 Mlb)?**

Yes



3A – DAILY BAG LIMIT OF ONE FISH OF ANY SIZE

- Table 3A.15
- Assume all other status quo management measures
- Estimated harvest by removing the proportion of second fish in 2025
- Release mortality = 1.5% of yield
- No mean weight data available in 3A

Harvest (no.

fish)	Size	Mean weight	Removals	SE
84,463	2025 O27	14.68	1.258	0.084
84,463	2025 O27+10%	16.15	1.384	0.093
84,463	2025 All+36%	13.48	1.156	0.083

**Options Below 2025
Allocation (1.480 Mlb)?**

Yes



3A – DAILY BAG LIMIT OF ONE FISH OF ANY SIZE WITH TUESDAY CLOSURES

- Table 3A.16
- One-fish any size bag limit
- Tuesday closures
- Assume all other status quo management measures
- Three mean weight scenarios
 - 2025 O27
 - 2025 O27 + 10%
 - 2025 All + 36%
- Release mortality = 1.5% of yield
- Removal estimates range from 1.156 Mlb to 1.663 Mlb

**Options Below 2025
Allocation (1.480 Mlb)?**

Yes



3A – DAILY BAG LIMIT OF ONE FISH OF ANY SIZE WITH SEASONAL CLOSURES

- Table 3A.17
- Assumes all Tuesdays and Wednesdays are closed
- Assess seasonal open/ close dates on a weekly basis May and September
- Three mean weight scenarios
- Release mortality = 1.5% of yield
- Removal estimates range from 1.024 Mlb to 1.384 Mlb

**Options Below 2025
Allocation (1.480 Mlb)?**

Yes



3A – SUMMARY

Management Measures

Options Below 2025 Allocation (1.480 MIb)?

Status quo (two-fish bag limit with a 27-inch maximum size limit on one fish, one trip per vessel and one trip per CHP per day, Tuesday and Wednesday closures all year)

Yes

Day of the week closures on Tuesdays from April 1 – October 6 or for the entire season

Yes

Day of the week closures on Tuesdays and seasonal open/ close dates weekly May and September under a range of maximum size limits on one fish

Yes

A daily bag limit of one fish of any size and day of the week closures on Tuesdays from April 1 – October 6 or for the entire season

Yes

A daily bag limit of one fish of any size and seasonal open/ close dates weekly May and September with Tuesdays closed

Yes



ACKNOWLEDGEMENTS

- Ben Jevons and Kayla Buster – logbook data summaries and review
- Diana Tersteeg – Southeast data
- Clay Mckean and Marian Ford – Southcentral data
- Countless technicians – halibut measurements and angler interviews
- Sarah Marrinan – Council Staff

- Funding:
 - State of Alaska General Funds
 - DJ-WB Federal Aid in Fish Restoration
 - Fish and Game Fund

