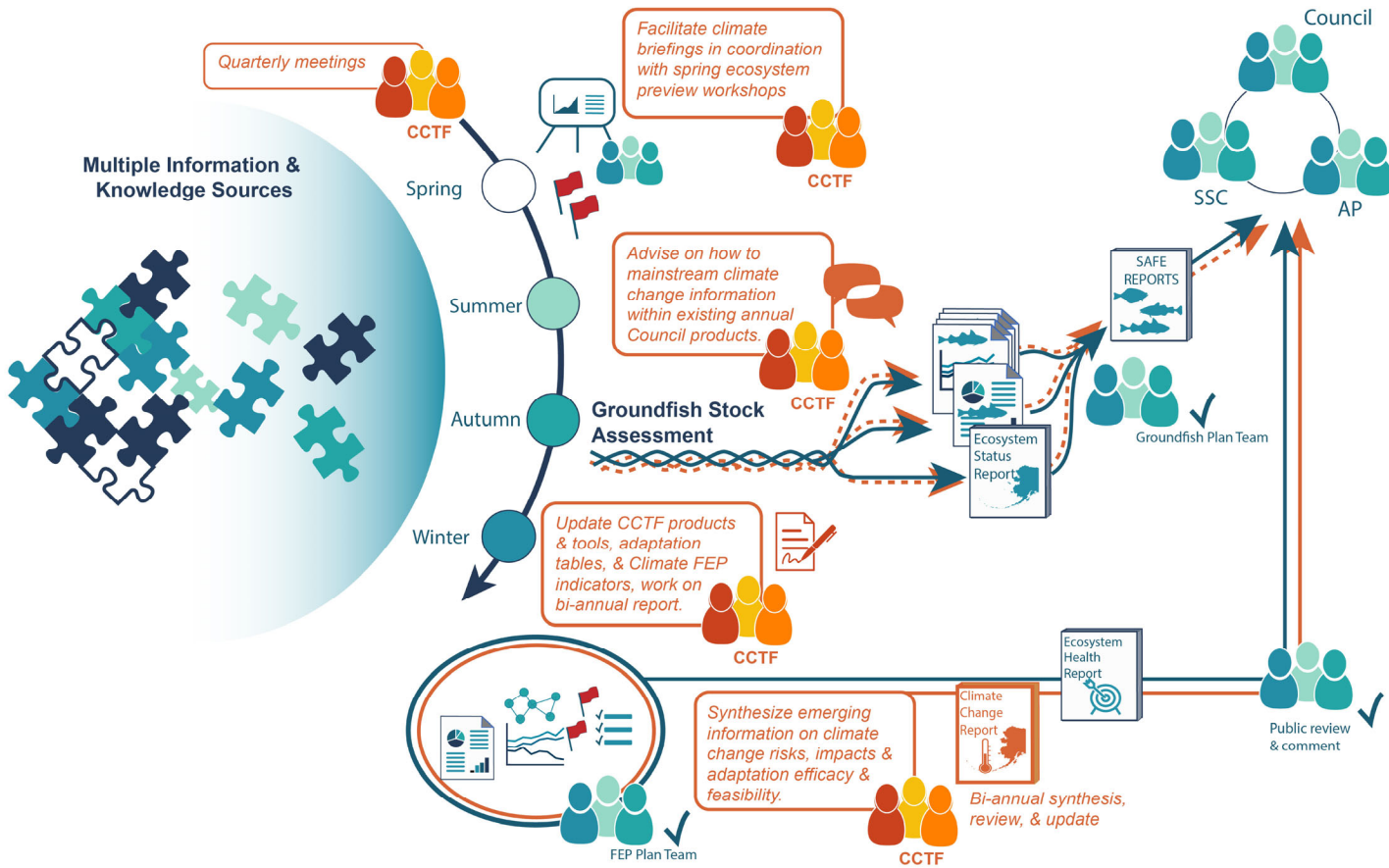


Climate-informed fisheries management: Proposed “on-ramps” and existing coordination



On-ramp 1

Tactical Near-term Advice (<2 yr)

Climate change information incorporated into stock assessment models, stock-specific indicators (ESPs), stock-specific risk tables (as appropriate).

E.g., ABC based on climate forecasts

On-ramp 2

Strategic Near-term Advice (<2 yr)

Climate change context for observed changes in social, ecological, & oceanographic conditions relevant for harvest advice and targets.

E.g., Forecasts of climate-driven distributions, tipping points, & thresholds

On-ramp 3

Strategic & Long-term Advice (>2 yr)

Climate - informed long-term strategic decision making & planning informed by IK, LK, and climate & management scenario evaluations, risk assessments, & adaptation efficacy & feasibility evaluations.

E.g., Targets based on climate projections

Legend

- Existing tools or process
- - - Advise re: climate change info
- New tools or process