

## **Strategic look at Council monitoring committees**

What type of recommendations does the Council make to NMFS about monitoring?

- Input on how to balance providing high quality, timely, AND cost-efficient data
- Input on data collection priorities (e.g., at-sea discards, PSC, etc.)
- Input on program design, especially:
  - Flexibility – maintain a program that can be responsive to changing priorities or needs (Council priorities often change more rapidly than the agency's)
  - Perceived quality of data – Council/ stakeholder perceptions regarding observer data being representative of real world fishing and suggestions to address issues.
  - Minimizing operational impacts to fishermen – Council policy is that monitoring requirements should have as small a footprint as possible on fishermen, to encourage them to fish the same way they would without an observer/EM system onboard
  - Minimizing costs – Council recommended an industry-paid program, has obligation to fishermen to ensure that costs are equitably distributed and revenue is not used inefficiently
- Input on observer safety and vessel safety at sea

What are the types of actions that committees mostly look at?

- Full coverage groundfish program
  - Moving vessels in/out of full/partial coverage
  - Reporting requirements for vessels
  - Observer provider regulatory requirements (e.g., insurance)
  - EM as alternative to observer onboard requirements
  - Technologies as complementary to observer requirements (e.g., scales, compliance EM)
- Partial coverage groundfish program
  - What are priorities for deployment in upcoming year based on assessment of needs and funds available (ADP)
    - How to distribute among EM vs observer pools, which strata, relative coverage rates
  - Is data high quality, timely, and cost efficient (annual report)
    - What could be done to improve
  - Program design/vessel responsibilities
    - objectives for fixed gear EM program
    - objectives for observer coverage
    - development of trawl EM program(s)
- Observer and industry-member training
  - Improvements for safety at sea, reducing observer harassment on vessels, getting people to follow procedures correctly, ensuring vessel use of EM results in quality data

DRAFT for discussion at Trawl EM Committee, 8/21/19

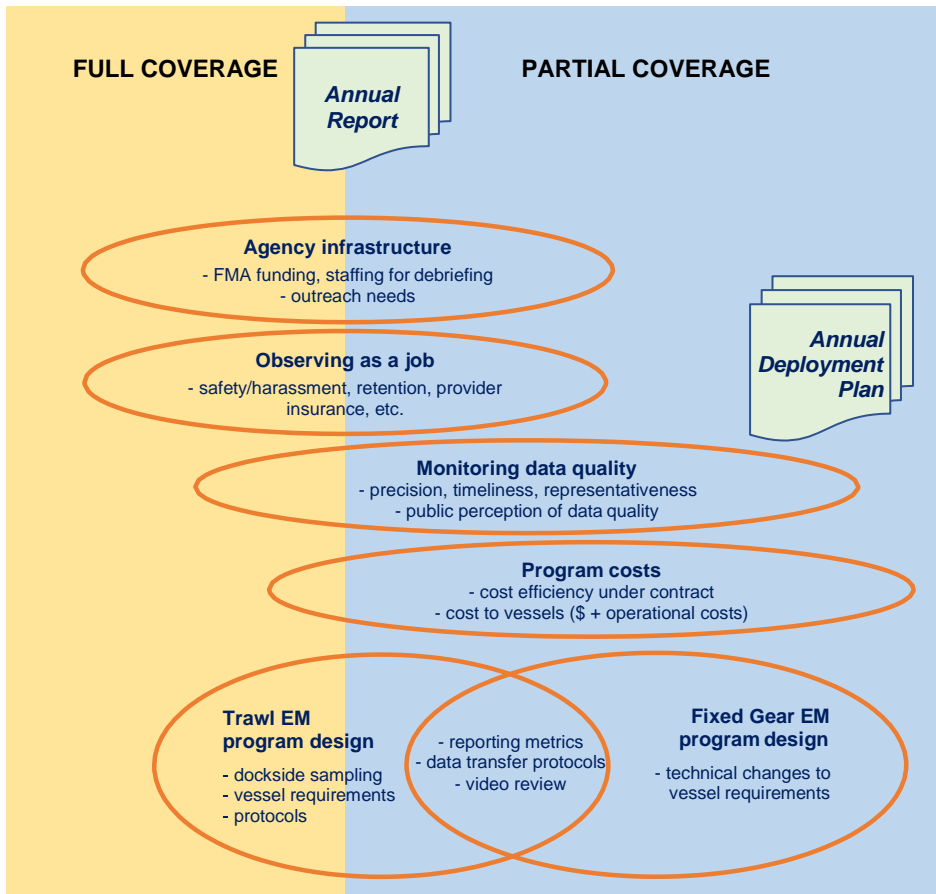
Current membership of groups (minus agency membership of EM groups)

Grey = Full coverage harvesters; Orange = Observer or EM service providers; Green = Partial coverage harvesters; Yellow = Processor

		FMAC	EXISTING FMAC subgroup	Trawl EMC	FORMER Fixed Gear EMWG	Full coverage	Partial coverage	EM	BSAI	GOA	Trawl	Fixed
Bill Tweit	FMAC Chair	X	X	X	X							
Paul MacGregor	AFA CPs – former APA	X				X			X		X	
Caitlin Yeager	AFA CVs – UCB	X		X		X	X		X			
Ruth Christiansen	AFA CVs – UCB			X								
Heather Mann	<u>Trawl AFA CVs (AFA, non-AFA, &amp; GOA) – MTC</u>			X								
Beth Concepcion	A80 CPs	X				X			X	X	X	
Chad See	Cod LL CPs - FLC	X				X			X	X		L
Stacey Hansen	Saltwater – obs/EM provider	X				X		X	X	X		
Michael Lake	AOI – obs provider	X				X			X	X		
Noelle Rucinski/ Abby Snedeker	Active observer	X				X						
Luke Szymanski	AIS – obs provider	X					X		X	X		
Mike Orcutt	AMR – EM provider			X	X H McElderry							
Jared Fuller	Saltwater – obs/EM provider			X	X Nancy Munro							
Chris Wilson	Satlink – EM provider			X								
Bob Alverson	FVOA – big/small LL	X	X				X		X	X		L
Dan Falvey	ALFA – IFQ LL CV	X	X		X		X	X		X		L
Kathy Hansen	SEAFAs – small LL	X					X	X		X		L
David Polushkin	K-Bay FA – IFQ/cod LL				X		X	X		X		L
Abigail Turner-Franke	NPFA, small cod/IFQ	X	X		X		X	X		X		L,P
Julie Kavanaugh	Kodiak, pot cod	X			X Jeff Stephan		X			X		P
Tom Evich	WGOA trawl	X		X			X	X			X	
Julie Bonney	AGDB – GOA trawl CVs	X	X	X		X	X			X	X	
Nicole Kimball	PSPA - processor	X	X			X	X		X	X		
Mike Simpson	Processor – Peter Pan			X								

*DRAFT for discussion at Trawl EM Committee, 8/21/19*

How do Council interests for monitoring mesh with full and partial coverage topics?



What are time drivers for Council advice?

(meaning that Committees would need to meet shortly before)

- Annual Report is presented to the Council in June (*full and partial coverage*)
- Annual Deployment Plan is presented to the Council in October (*partial coverage*)
- NFWF proposal deadlines are generally in July, with notice of RFP in April or May. Council has generally signaled support for proposals in principle, pending review by staff, in June. (*EM*)
- NMFS accepts EFP applications by May 1 (for Oct Council review) or Sep 1 (for Feb Council review). (*EM and other monitoring program changes*)

*DRAFT for discussion at Trawl EM Committee, 8/21/19*

Suggestions for revising Council committees

1. Full FMAC moves to one meeting a year, in May. Focus on the Annual Report and other all-program issues (safety action plan, review of analytical tasking, etc.). FMAC continues to include representation from all participants in the monitoring process. If necessary, ad-hoc full FMAC meetings could be convened to address Council priorities with respect to a particular analysis, if timeline requires. May result in slightly longer May meeting.
2. Formally create a FMAC Partial Coverage Subgroup (may need to reconsider/add to existing membership) to address partial coverage issues. Meets in September, and ad-hoc if necessary based on timeline requirements. Other FMAC members may attend if interested. Reports directly to Council on partial coverage issues. Anything that affects program as a whole should wait for review by full FMAC.
3. Trawl EM Committee remains focused on designing a new program. To extent that issues come up with respect to trawl that are also applicable to fixed gear, either try to invite key fixed gear members (e.g., Dan and Abby) or schedule for FMAC Partial Coverage.
4. Create non-Council, annual opportunities for Fixed Gear EM technical outreach, around the time that any changes to the VMPs would need to be considered. Aug/Sep/Oct? Fishermen, providers, PSMFC, FMA, NMFS SF VMP approvers, Enforcement. Opportunity to get input on what did/didn't work, any necessary tweaks. Any big recommendations for change should go to FMAC Partial Coverage Subgroup September meeting for discussion. This same model would be extended to trawl EM once it is fully implemented.

Fishery Monitoring Advisory Committee

<b>Purpose</b>	Provide Council with recommendations about fishery monitoring in all Council-managed groundfish and halibut fisheries. Provide a balanced perspective so that changes seemingly affecting only one sector will not have unintended consequences to other aspects of the program.
<b>Who is needed?</b>	Fishermen – representatives of all harvesting and processing sectors Practitioners – representatives of active observers and provider companies Agency – Council, FMA, catch accounting, reg writers, enforcement/GC
<b>Frequency?</b>	Currently 2x a year (May and Sep), plus other meetings as necessary for specific Council analyses. <b>Suggest moving to once a year.</b> Committee reports directly to Council through staff/Chair report.
<b>Primary responsibilities</b>	<ol style="list-style-type: none"><li>1. Review Annual Report – describes most of elements that are essential to the program as a whole (overall funding, coverage, and performance; safety/enforcement issues, obs/EM integration)</li><li>2. Review observer analytical tasking priorities so that staff effort is appropriately balanced across interest groups</li><li>3. Provide feedback on Council analyses at some point in the process to ensure that all potential consequences are addressed</li></ol>

*DRAFT for discussion at Trawl EM Committee, 8/21/19*

Fishery Monitoring Advisory Committee Subgroup – Partial Coverage Members only

<b>Purpose</b>	Provide Council with recommendations specific to partial coverage fees and deployment, including allocating funds between EM and observer days. Provide recommendations on partial coverage program design changes. Once initiated and initially analyzed, ensure that these get some vetting with full FMAC.
<b>Who is needed?</b>	Those members of the FMAC that represent partial coverage, observer and EM: Fishermen <u>and Processors</u> – representatives of harvesting and processing sectors participating in partial coverage Practitioners – representatives of observer and EM provider companies (???) Agency – Council, FMA, catch accounting, reg writers, enforcement/GC, PSMFC?
<b>Frequency?</b>	Once a year in September, plus other meetings as necessary for specific Council analyses. Subgroup also meets with full FMAC in May. Subgroup reports directly to Council on partial coverage issues through staff/Chair report. Subgroup reports to full FMAC on program-level issues.
<b>Primary responsibilities</b>	<ol style="list-style-type: none"> <li>1. Review chapter 3 of the Annual Report (could be on May agenda as an optional session for full coverage members of FMAC – e.g., last 2 hours of Day 1)</li> <li>2. Review ADP</li> <li>3. Review specific partial coverage tasks and prioritize among them, within parameters of full FMAC review of all tasks</li> <li>4. Provide targeted feedback on partial coverage changes initiated by Council</li> </ol>

Trawl EM Committee

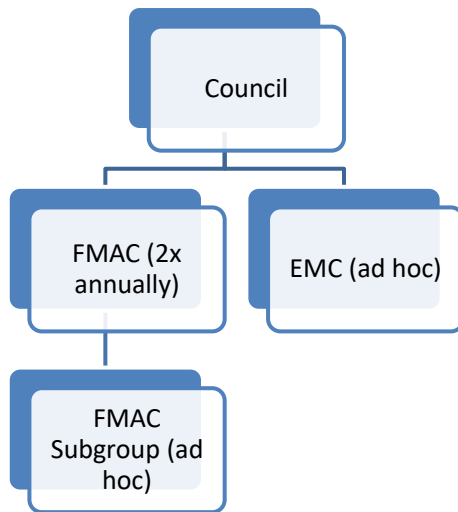
<b>Purpose</b>	Develop a workable design for trawl EM as an alternative to an observer onboard, which distinguishes data flow and timeliness, relative responsibilities of vessels, providers, reviewers, and agency, to allow implementation.
<b>Who is needed?</b>	Fishermen – those interested in a trawl EM alternative (harvesters & processors) Practitioners – representatives of existing (and potential) EM provider companies Agency – Council, FMA, catch accounting, reg writers, PSMFC, enforcement/GC, IPHC, other users of observer data (e.g., mammals, seabirds, stock assessment)
<b>Frequency?</b>	3-4x a year during the development of the program. Committee reports directly to Council through staff/Chair report.
<b>Primary responsibilities</b>	<ol style="list-style-type: none"> <li>1. Maintain the trawl EM Cooperative Research Plan during program development. Provides overall guidance for goals and phases of trawl EM development.</li> <li>2. Provide technical guidance on policy/program design issues arising during annual EM fieldwork, and to be resolved for upcoming years</li> <li>3. Review analysis to implement trawl EM.</li> </ol>

Fixed Gear EM technical outreach

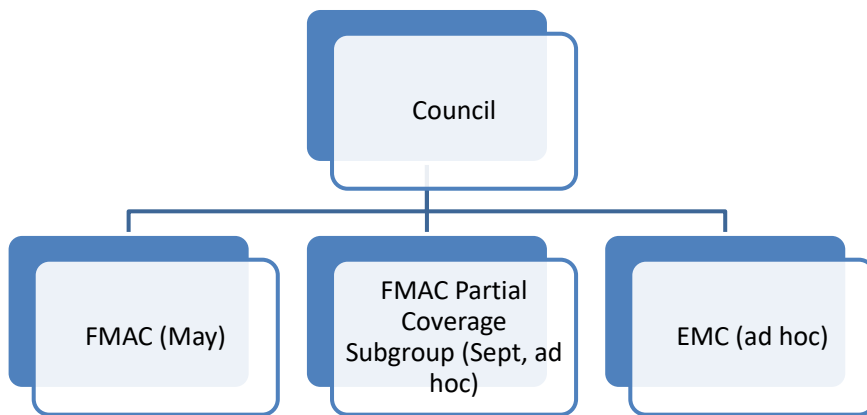
- Annual meeting/teleconference convened by NMFS? FMA? to discuss technical issues encountered during year from agency, fishermen representatives, reviewers, or providers that may need to be addressed for upcoming year
- Report back to FMAC Subgroup if issues need to be elevated for Council consideration.

DRAFT for discussion at Trawl EM Committee, 8/21/19

Current Reporting Structure



Revised Reporting Structure



DRAFT for discussion at Trawl EM Committee, 8/21/19

Table 1 Summary of topics within the scope of each monitoring committee.

<u>FMAC</u> (Broad focus)	<u>FMAC Partial Coverage Subgroup</u> (More limited focus)	<u>EMC</u> (narrow focus – single task)
<u>Monitoring requirements in regulation</u> <ul style="list-style-type: none"> <li>Which vessels are in full or partial coverage</li> <li>Complementary tech (scales, sampling stations, compliance EM)</li> </ul>	<u>Annual Deployment plan</u> <ul style="list-style-type: none"> <li>Monitoring priorities that inform observer deployment optimization</li> <li>EM monitoring priorities</li> <li>Fee split between EM and Observers</li> <li>Fixed gear EM cost metrics</li> <li>ODDS</li> </ul>	<u>Trawl EM development</u> <ul style="list-style-type: none"> <li>EM EFP</li> <li>Shoreside sampling (Salmon)</li> <li>EM Cost metrics</li> <li>EM video review</li> </ul>
<u>Observer Provider Requirements</u> <ul style="list-style-type: none"> <li>Observer Provider permits</li> <li>Observer Provider Insurance</li> <li>Provider Portal</li> </ul>	<u>Partial coverage cost efficiencies</u> <ul style="list-style-type: none"> <li>Fixed gear EM optimization</li> </ul>	
<u>Observer recruitment and retention</u>	<u>Shoreside sampling (Fixed gear average weights and biologicals)</u>	
<u>Observer training</u>		
<u>Observer harassment</u>		
<u>Safety at sea</u>		

- Formatted Table
- Formatted: Font: Not Bold
- Formatted: Font: Not Bold
- Formatted: Font: Not Bold
- Formatted: Font: Not Bold
- Formatted: Font: Not Bold
- Formatted: Font: (Default) Times New Roman
- Formatted: List Paragraph, Bulleted + Level: 1 + Aligned at: 0.25" + Indent at: 0.5"
- Formatted: List Paragraph, Bulleted + Level: 1 + Aligned at: 0.25" + Indent at: 0.5"
- Formatted: List Paragraph, Bulleted + Level: 1 + Aligned at: 0.25" + Indent at: 0.5"
- Formatted: Font: (Default) Times New Roman
- Formatted: Font: (Default) Times New Roman
- Formatted: List Paragraph, Bulleted + Level: 1 + Aligned at: 0.25" + Indent at: 0.5"
- Formatted: Font: (Default) Times New Roman
- Formatted: Font: (Default) Times New Roman
- Formatted: List Paragraph, Bulleted + Level: 1 + Aligned at: 0.25" + Indent at: 0.5"
- Formatted: Font: (Default) Times New Roman
- Formatted: Font: (Default) Times New Roman
- Formatted: Font: (Default) Times New Roman
- Formatted: Font: (Default) Times New Roman