

**ADF&G Informational Handout for
Charter Halibut Committee Meeting
October 23, 2025**

Table 1. Preliminary charter halibut harvest estimates for Areas 2C and 3A for 2025.

IPHC Area	Mean Wt lb	Harvest		Release Mortality lb	Total Removals lb	Allocation lb	Overage lb	Overage pct
Area_2C	9.20	76,683	705,484	28,336	733,820	720,000	13,820	1.9%
Area_3A	9.83	140,570	1,381,803	15,294	1,397,097	1,480,000	-82,903	-5.6%

Table 2. Comparison of forecast (Dec 2024 analysis) and preliminary estimates (Oct 2025).

IPHC Area	Component	Predicted Dec 2024	Prelim Oct 2025	% Diff Pred vs Prelim
Area_2C	Harvest_Num_Fish	78,195	76,683	-1.9%
	Mean_Wt_lb	8.78	9.20	4.8%
	Yield_Mlb	0.686	0.705	2.8%
	Release_Mortality_Mlb	0.029	0.028	-3.4%
	Total_Removals_Mlb	0.715	0.734	2.7%
Area_3A	Harvest_Num_Fish	138,670	140,570	1.4%
	Mean_Wt_lb	10.39	9.83	-5.4%
	Yield_Mlb	1.441	1.382	-4.1%
	Release_Mortality_Mlb	0.012	0.015	25.0%
	Total_Removals_Mlb	1.453	1.397	-3.9%

Table 3. Comparison of 2024 preliminary (Oct 2024) and final (Oct 2025) estimates.

IPHC Area	Component	Preliminary	Final	% Diff Prelim vs Final
Area_2C	Harvest_Num_Fish	89,303	89,786	0.5%
	Mean_Wt_lb	9.07	9.08	0.1%
	Yield_Mlb	0.810	0.815	0.6%
	Release_Mortality_Mlb	0.032	0.038	18.7%
	Total_Removals_Mlb	0.843	0.853	1.2%
Area_3A	Harvest_Num_Fish	161,439	161,512	0.0%
	Mean_Wt_lb	9.85	9.89	0.4%
	Yield_Mlb	1.591	1.598	0.4%
	Release_Mortality_Mlb	0.017	0.019	11.8%
	Total_Removals_Mlb	1.607	1.617	0.6%

Table 4.1. Performance of 2C charter management measures recommended annually by the North Pacific Fishery Management Council since 2012 (2025 preliminary estimates in bold italics). Negative Overage and % Overage numbers indicate removals were less than the allocation.

Area	Year	Management measure	MgmtType	Allocation	Removals ^a	Overage	% Overage
2C	2012	One fish, U45-O68 rev. slot	GHL	0.931	0.605	-0.326	-35%
	2013	One fish, U45-O68 rev. slot	GHL	0.788	0.762	-0.026	-3%
	2014	One fish, U44-O76 rev. slot	CSP	0.761	0.827	0.066	9%
	2015	One fish, U42-O80 rev slot	CSP	0.851	0.814	-0.037	-4%
	2016	One fish, U43-O80 rev slot	CSP	0.906	0.839	-0.067	-7%
	2017	One fish, U44-O80 rev slot	CSP	0.915	0.941	0.026	3%
	2018	One fish, U38-O80 rev slot	CSP	0.810	0.716	-0.094	-12%
	2019	One fish, U38-O80 rev slot	CSP	0.820	0.697	-0.123	-15%
	2020	One fish, U40-O80 rev slot through 6/14, U45-O80 after 6/14	CSP	0.780	0.483	-0.297	-38%
	2021	One fish, U50-O72 rev slot	CSP	0.810	1.163	0.353	44%
	2022	One fish, U40-O80 rev slot	CSP	0.820	0.848	0.028	3%
	2023	One fish, U40-O80 rev slot, nine Mondays closed July 24-Sept 18	CSP	0.800	0.832	0.032	4%
	2024	One fish, U40-O80 rev slot, U36-O80 starting July 15, Fridays closed July 19 - September 13	CSP	0.810	0.853	0.043	5%
	2025	One fish, U37-O80 rev slot, Tuesdays closed May 13 to September 9	CSP	0.720	0.734	0.014	2%

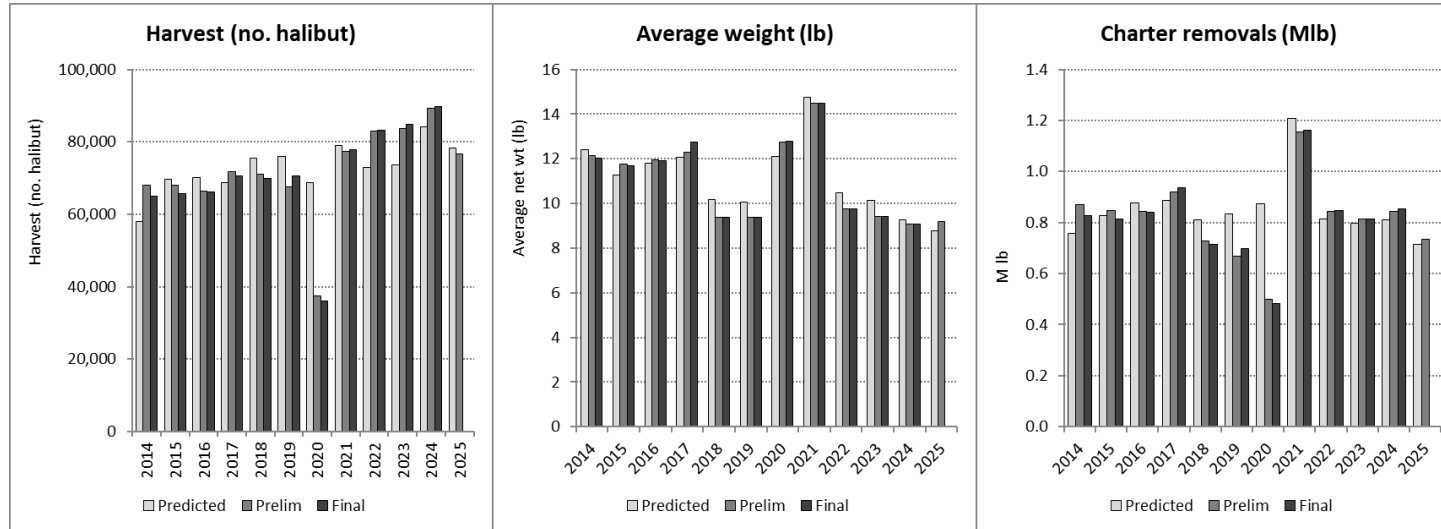
^a - 2025 removal estimates are preliminary

Table 4.2. Performance of 3A charter management measures recommended annually by the North Pacific Fishery Management Council since 2012 (2025 preliminary estimates in bold italics).

Area	Year	Management measure	MgmtType	Allocation	Removals ^a	Overage	% Overage
3A	2012	Two fish any size	GHL	3.103	2.284	-0.819	-26%
	2013	Two fish any size	GHL	2.734	2.514	-0.220	-8%
	2014	Two fish, one ≤ 29", one trip/day with halibut harvest.	CSP	1.782	2.066	0.284	16%
	2015	Two fish, one ≤ 29", Thursday closed Jun 15-Aug 31, annual limit 5 halibut, one trip/day with halibut harvest.	CSP	1.890	2.094	0.204	11%
	2016	Two fish, one ≤ 28", Wednesday closed all year, annual limit 4 halibut, one trip/day with halibut harvest.	CSP	1.814	2.021	0.207	11%
	2017	Two fish, one ≤ 28", Wednesday closed all year, three Tuesdays closed, annual limit 4 halibut, one trip/day with halibut harvest.	CSP	1.890	2.089	0.199	11%
	2018	Two fish, one ≤ 28", Wednesday closed all year, six Tuesdays closed, annual limit 4 halibut, one trip/day with halibut harvest.	CSP	1.790	1.886	0.096	5%
	2019	Two fish, one ≤ 28", Wednesday closed all year, five Tuesdays closed, annual limit 4 halibut, one trip/day with halibut harvest.	CSP	1.890	2.054	0.164	9%
	2020	Two fish (one ≤ 26" thru 6/14, ≤ 32" after 6/14), Tuesday and Wednesday closed thru 6/14, all days open after 6/14, annual limit 4 halibut thru 6/14, no annual limit after 6/14, one trip/day with halibut harvest.	CSP	1.710	1.567	-0.143	-8%
	2021	Two fish, one ≤ 32", Wednesday closed all year, one trip/day with halibut harvest.	CSP	1.950	2.455	0.505	26%
	2022	Two fish, one ≤ 28", Wednesday closed all year, two Tuesdays closed, one trip/day with halibut harvest.	CSP	2.110	1.741	-0.369	-17%
	2023	Two fish, one ≤ 28", Wednesday closed all year, nine Tuesdays closed, one trip/day with halibut harvest.	CSP	1.890	1.588	-0.302	-16%
	2024	Two fish, one ≤ 28", Wednesday closed all year, one trip/day with halibut harvest.	CSP	1.890	1.617	-0.273	-14%
	2025	Two fish, one ≤ 27", Tuesday and Wednesday closed all year, one trip/day with halibut harvest.	CSP	1.480	1.397	-0.083	-6%

^a - 2025 removal estimates are preliminary

Area 2C



Area 3A

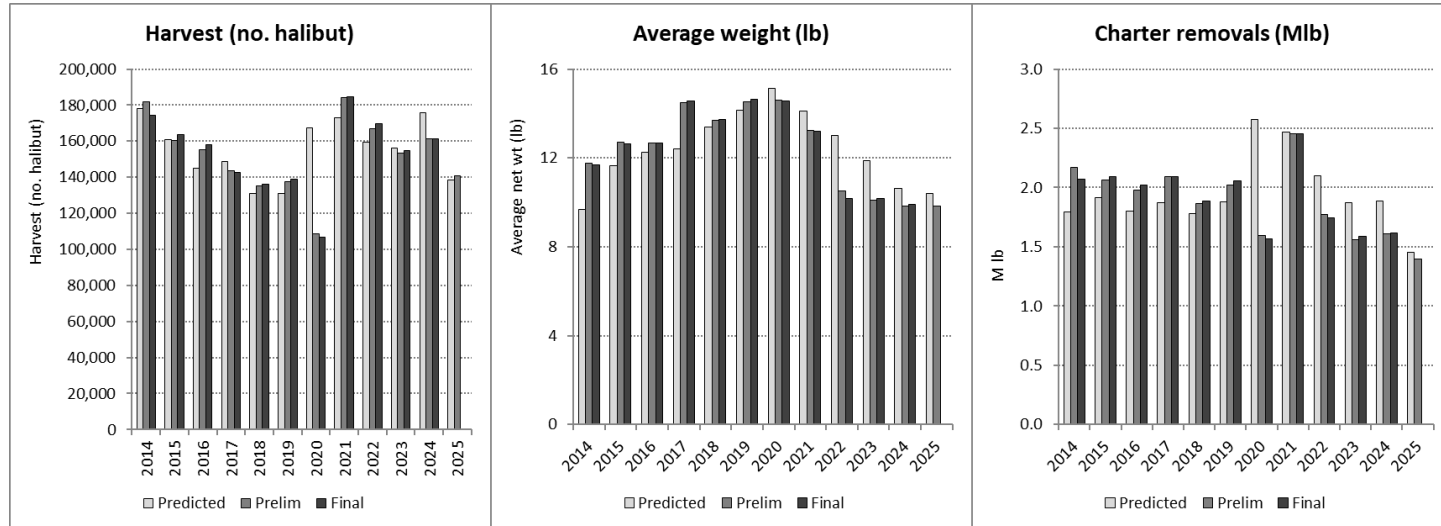


Figure 1. Comparison of predictions (prior to each season), preliminary estimates (based on partial-year logbook data), and final estimates of harvest, average weight, and total charter removals, Areas 2C and 3A, 2014-2025.