

NOAA
FISHERIES

FY25 Summer Acoustic Survey Planning

Dr. Lyle Britt
AFSC-RACE Division Director



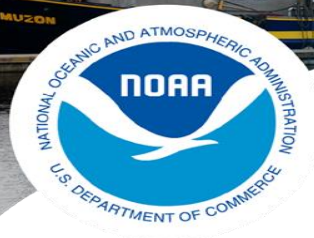
**NOAA
FISHERIES**

Survey Schedule Challenges

- The AFSC is facing resourcing challenges in being able to fully execute our survey and research priorities while also being able to address emerging priorities
 - Staffing/Expertise: A challenge across all of our survey teams
 - Vessel Time: We are often working with reduced survey duration/compressed schedules and lack time to conduct other priority work
- Ongoing internal review of acoustic-trawl survey portfolio
 - 3 years of internal discussion and analysis



**NOAA
FISHERIES**



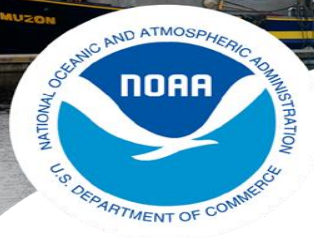
NOAA
FISHERIES

Survey Reduction Proposal

**Discontinue the Biennial MACE GOA Acoustic-Trawl
Summer Survey (odd years)**



NOAA
FISHERIES

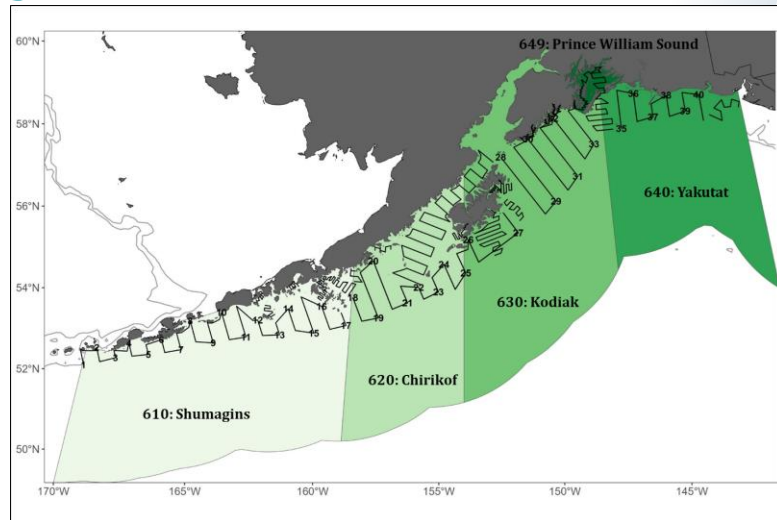


NOAA
FISHERIES

History of GOA Acoustic-Trawl Summer Survey

Time series 2013-2023 (6 years)

- Biennial
- Survey attempt in 2011 did not sample east of Kodiak due to ship issues
- 2021 and 2023 were at a reduced resolution

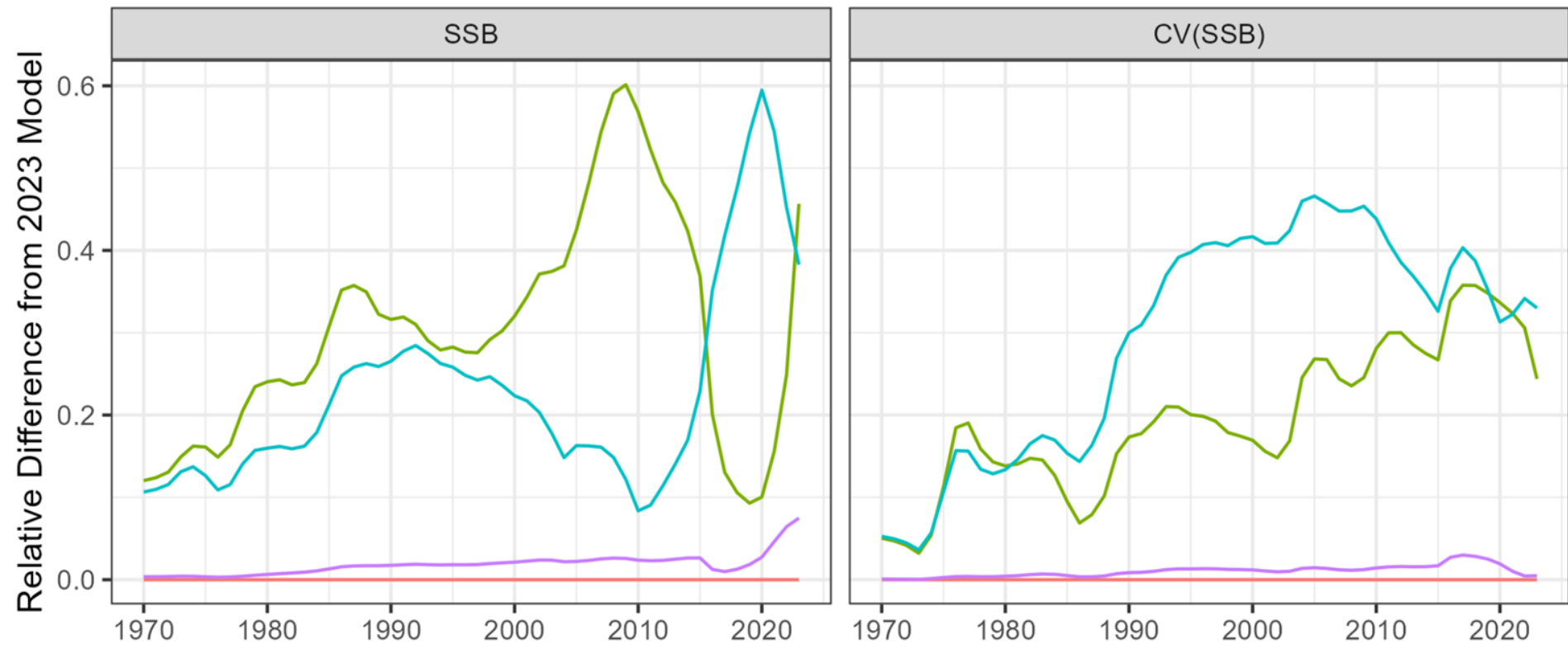


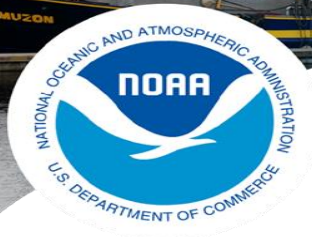
NOAA
FISHERIES



Analysis

— 23: 2023 final — Drop Shelikof — Drop ADF&G — Drop Summer AT





Pros/Cons

**NOAA
FISHERIES**

Pros

- Secure and fortify vessel days for GOA Winter Acoustic-Trawl surveys
- Better align survey portfolio with staffing capacity
- Free up NOAA Ship days for emergent survey/research needs

Cons

- Halt of a developing time series
- Reduced summer walleye pollock data. Could impact apportionment
- Loss of other ecosystem data/indicators (forage fish index, euphausiid index, etc)



**NOAA
FISHERIES**



**NOAA
FISHERIES**

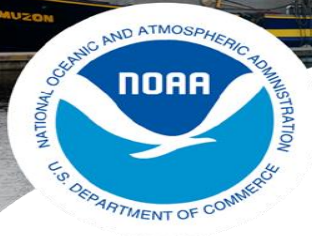
Plan Team Asks

- Are there additional questions or aspects that we should explore before moving forward with this decision?
- What is the Plan Team's perspective on the value of this particular time series for the pollock stock assessment relative to other data used in the model?

Request: Coordinate Plan Team response through co-chairs and provide written feedback to AFSC leadership by 9/30.



**NOAA
FISHERIES**



NOAA
FISHERIES

Where to Direct Questions

Lyle Britt

Director - AFSC RACE Division

lyle.britt@noaa.gov



NOAA
FISHERIES