

**C5 GOA Tanner crab
Council Motion
June 7, 2026**

The Council selects the following PPA in **bold** and revises the purpose and need and alternatives as follows for an additional initial review, per SSC recommendation. Additions are in underline and deletions in ~~strikeout~~. Staff should include SSC recommendations in the next draft as practicable.

Purpose and Need:

Crab is a prohibited species in the Gulf of Alaska (GOA) groundfish fisheries, and the Council has developed several time and area closures to minimize the impacts of groundfish fisheries on GOA crab. In recent years, new information about Tanner crab biology and management resulted in modifications to the harvest strategy and management measures for the state-managed GOA directed Tanner crab fishery. The Council is considering a new groundfish fishing area closure on the east side of Kodiak Island in areas known to have consistently high densities and abundance of Tanner crab. The Council is also considering ~~a process to evaluate the effectiveness of~~ modification or removal of existing groundfish fishery area closures around Kodiak Island, most of which were enacted in the late 1980s, ~~to determine whether modifications are needed~~. Given the importance of crab and groundfish fisheries to the harvesting, processing and support sectors in the community of Kodiak, the Council intends to consider management actions that conserve and protect Tanner crab while minimizing negative impacts on Central GOA groundfish fisheries.

Alternative 1: Status Quo

Alternatives 2 and 3 are not mutually exclusive.

Alternative 2: Closure area

Objectives for closure area: minimize groundfish fishery interactions with Tanner crab in areas off the east side of Kodiak Island 1) where high densities of Tanner crab are known to occur and 2) during life stages in which available information indicates that Tanner crab are most vulnerable to fishery interactions.

~~The Council intends to establish criteria and a timeline to review the effectiveness of the closure area.~~

Element 1: Closure Area

Option 1: ADF&G statistical area 525702

Option 2: East side of Kodiak Island - Federal waters north of 56 degrees 54.6 minutes latitude and 152 degrees 16 minutes longitude (see reference figure 1)

Option 3: East side of Kodiak Island - Federal waters with vertices at 57 degrees 20.054 minutes latitude 152 degrees 22.369 minutes longitude; 57 degrees 16.925 minutes latitude 152 degrees 28.502 minutes longitude; 57 degrees 09.874 minutes latitude 152 degrees 25.919 minutes longitude; 57 degrees 07.240 minutes latitude 152 degrees 24.452 minutes longitude; 57 degrees 04.379 minutes latitude 152 degrees 24.801 minutes longitude; 57 degrees 00.864 minutes latitude 152 degrees 26.673 minutes longitude; 56 degrees 56.000 minutes latitude 153 degrees 09.000 minutes longitude; 56 degrees 58.137 minutes latitude 153 degrees 13.488 minutes longitude (see reference figure 1).

Element 2: Closure duration

Option 1: Year-round

Option 2: Seasonal

- a) Feb 15 – June 15 (current Type II closure dates)
- b) April 1 – June 15 (directed Tanner fishery closure date by regulation through Tanner crab survey start date)

Element 3: Gear types subject to closure

Option 1: Groundfish Pot & Trawl (non-pelagic and pelagic) gear

Option 2: Non-pelagic trawl gear

Element 4: Timeline for Council review

Option 1: Review 5 years after implementation

Option 2: Review 7 years after implementation

Element 5: Performance metrics for post-implementation Council review:

- changes in Tanner crab PSC levels and rates
- trends in mature female and mature male Tanner crab survey abundance
- directed Tanner crab fishery performance indicators (CPUE, guideline harvest level)
- redistribution of groundfish effort and catches pre and post action
- changes in halibut PSC by affected groundfish sectors
- Kodiak groundfish landings during the spring shoulder season
- other metrics as analysts deem appropriate through development of the review

~~Alternative 3: Changes to existing closure areas and regulations. Evaluate the existing Marmot Bay Tanner Crab Protection Area and all Type I Marmot Flat closure area, II and III closures around Kodiak Island for modification or removal.~~

~~The Council intends to review the objective of each existing crab protection area around Kodiak Island and biological, fishery independent and dependent information available for the area and consider options for modifications or removal.~~

Options are not mutually exclusive.

Option 1: Remove all Type III Areas which have never been triggered (Chirikof, Horse's Head, Barnabas, Outer Marmot Bay)

Option 2: Modify the Type I Marmot Flats Area by moving the eastern boundary to 152 degrees longitude (see reference figure 2).

Suboption: Mirror the Alternative 2 timeline and performance metrics for post-implementation review and include evaluation of metrics for red king crab

Option 3: Simplify the regulations for Kodiak Island crab closure areas to be consistent with the regulations for the Marmot Bay Tanner crab protection area and remove the conflicting requirements that prevent having non-pelagic trawl gear onboard while fishing with pelagic trawl gear in an area closed to non-pelagic gear.

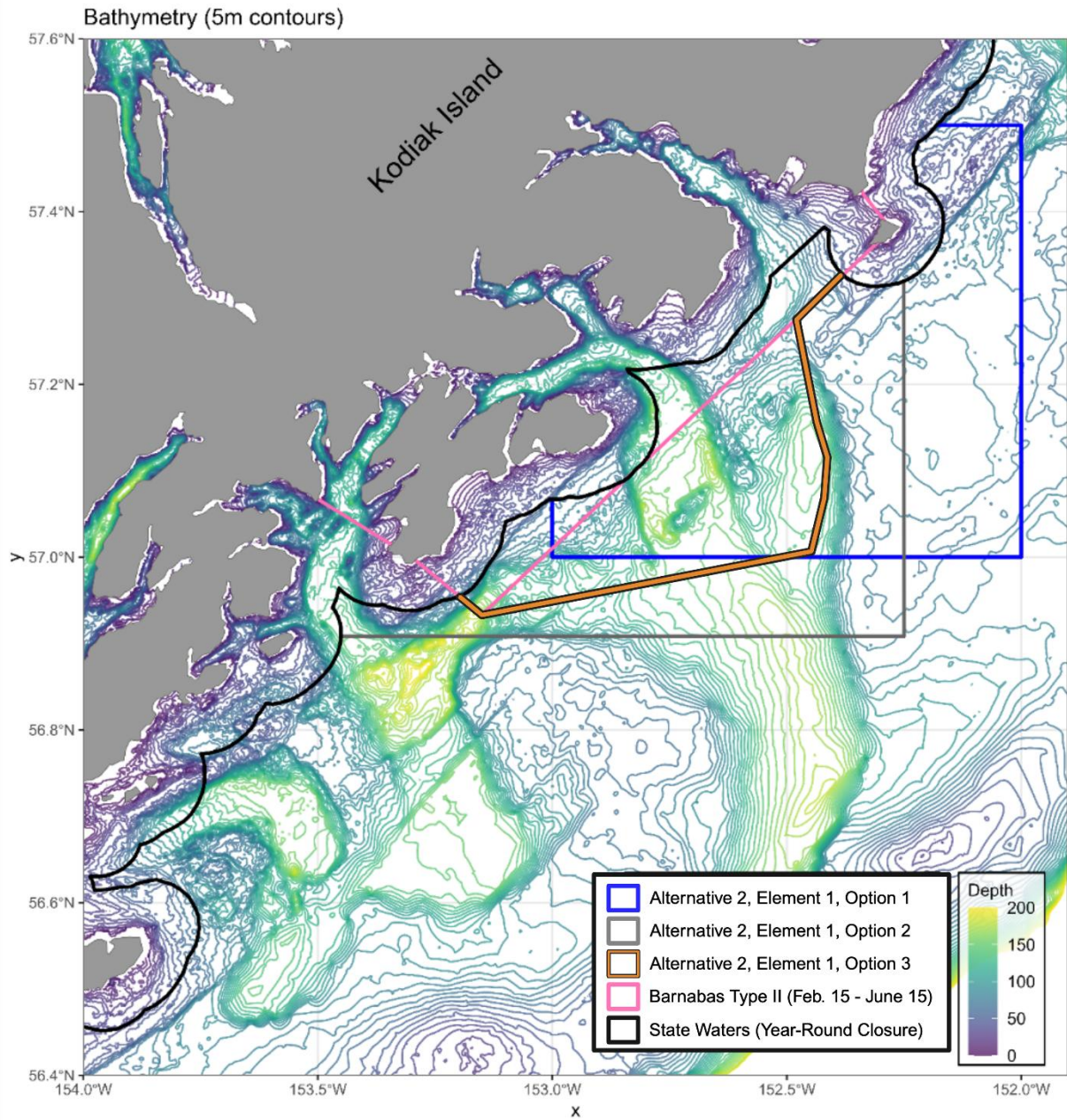


Figure 1. Alternative 2, Element 1, Options 1, 2, and 3.

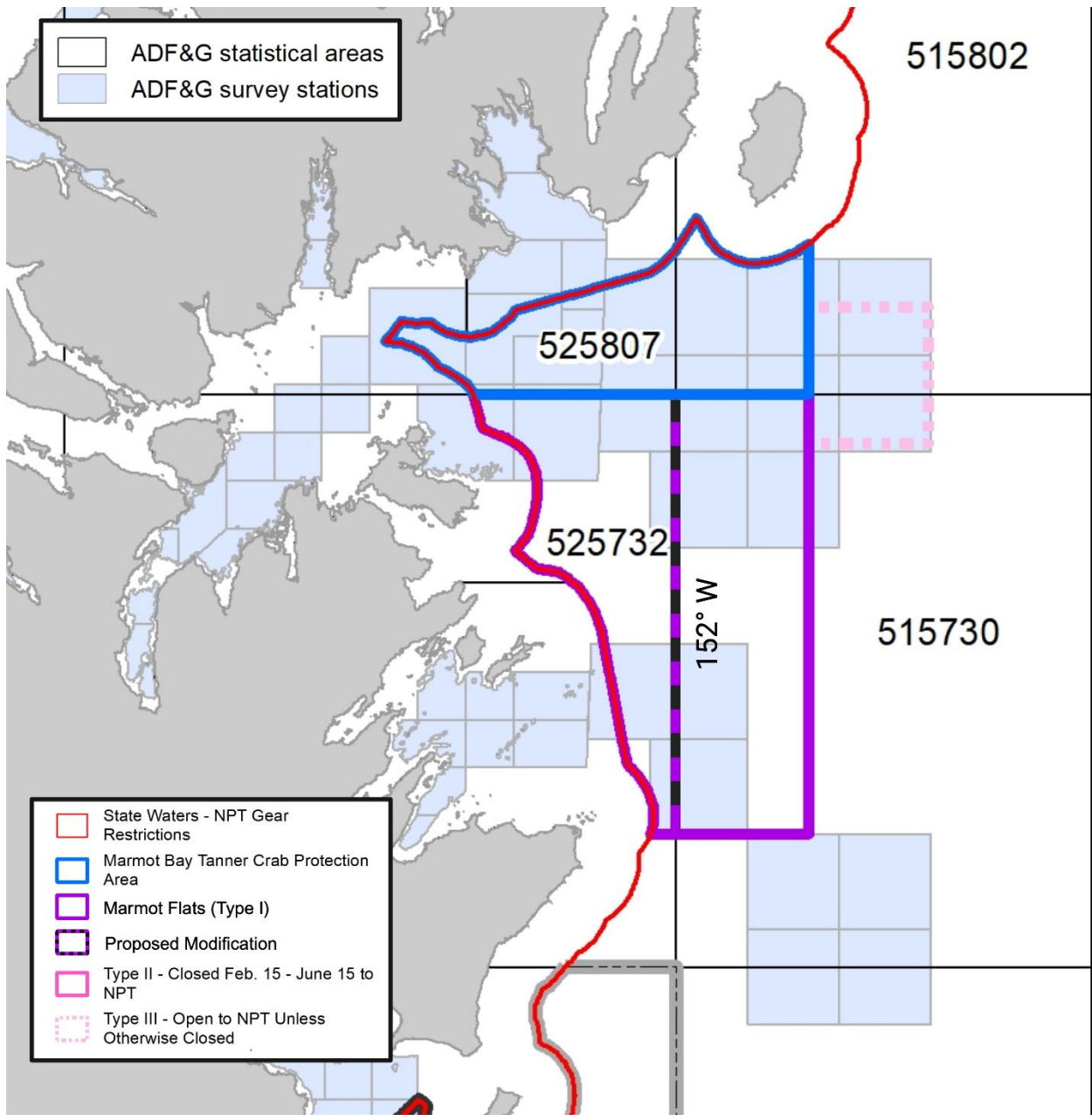


Figure 2. Alternative 3, Option 2