

CP CHINOOK AND CHUM SALMON BYCATCH REDUCTION INCENTIVE PLAN AGREEMENT (IPA) ANNUAL REPORT 2025



Austin Estabrooks
At-sea Processors Association

June 2026
NPFMC



PRIMARY IPA COMPONENTS

- Data gathering, monitoring, reporting, information sharing.
- Identification of bycatch avoidance areas (Rolling Hot Spot Closures).
- Fishing area prohibitions for vessels with poor bycatch performance.
- Fixed Closures: A-season closed area & conditional B-season closed areas.
- Performance criteria to ensure Chinook PSC rates in October are not significantly higher than prior months
- Penalties for vessels with consistently higher Chinook salmon bycatch rates relative to the fleet.
- Requires the use of Salmon Excluder Devices



THE ROLLING HOT SPOT PROGRAM DEMONSTRATED A-SEASON CHINOOK

AFA CP EFFORT 1/31-2/6/26,
Closure 2/6/26-2/13/26



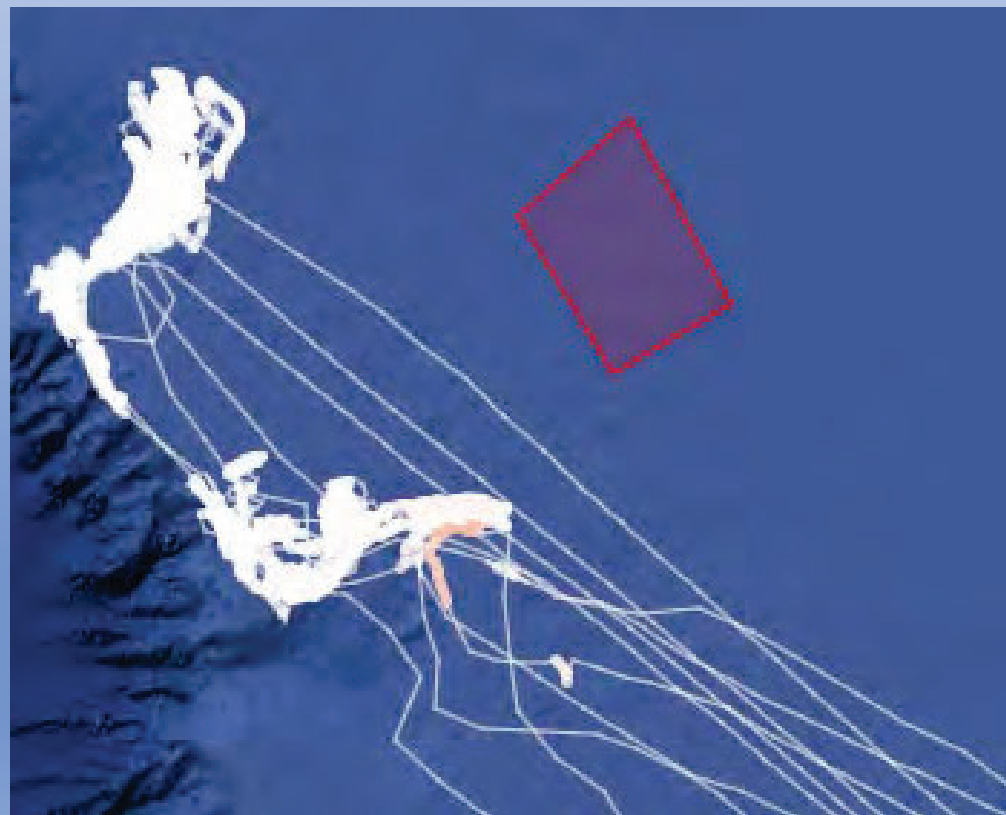
AFA CP EFFORT 2/6/26-2/13/26,
Closure 2/6/26-2/13/26



THE ROLLING HOT SPOT PROGRAM DEMONSTRATED B-SEASON CHUM

AFA CP EFFORT 8/15/25-8/22/25,
New Closure 8/22/25-8/29/25

AFA CP EFFORT 8/22/25-8/29/25,
Closure in Effect 8/22/25-8/29/25

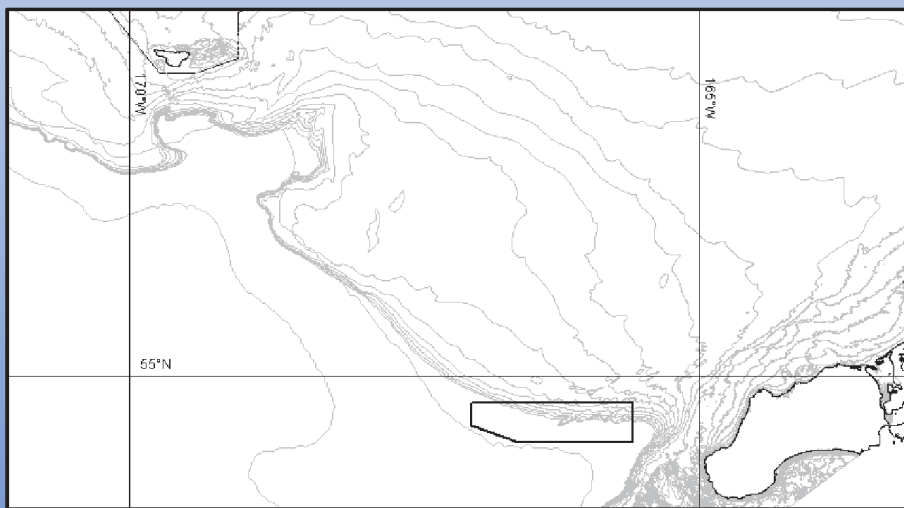


THE ROLLING HOT SPOT PROGRAM

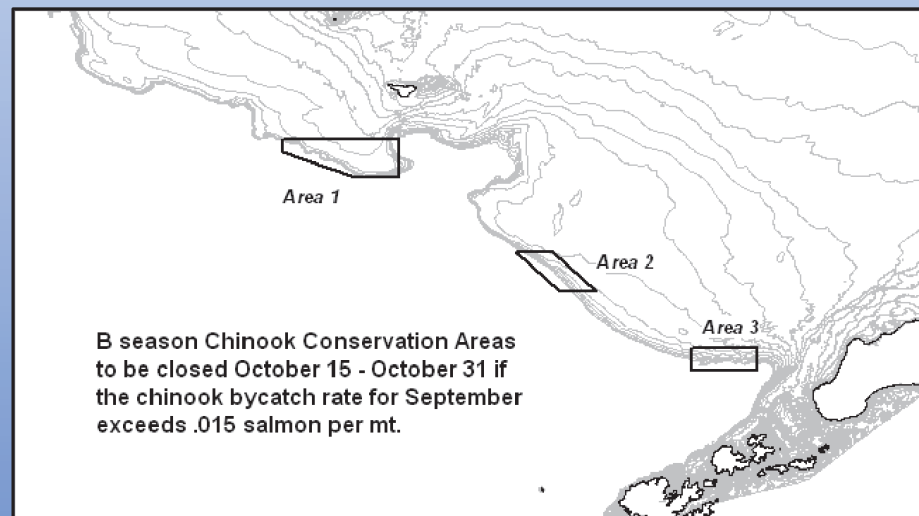
1. Calculate Base Rates-Pollock Fishery Wide 3-week rolling average bycatch rate
2. Calculate Weekly ADFG Stat Area bycatch rates
3. ADFG Stat Areas Above Base Rate qualify for Rolling Hot Spot Bycatch Avoidance Areas
4. Calculate 2 Week Vessel Bycatch Rates (Performance)
5. If Vessel Bycatch Rate $>$ 75% of Base Rate, then vessel excluded from Bycatch Avoidance Areas.

CHINOOK CONSERVATION AREAS

735 square mile area closed to all pollock fishing 100% of the time during A- season



Areas totaling 1,295 square miles closed to CP pollock fishing Oct 15-Oct 31 if the Chinook bycatch rate for September exceeds 1.5 Chinook per 100 tons pollock.



CHINOOK PROHIBITED SPECIES CATCH LIMITS

Pollock Sector	Performance Standard limit (Low Abundance)	Absolute Limit (Low Abundance)
CDQ	2,732	3,690
CP	9,462	12,780
Totals	12,194	16,470
Average Vessel Limit (with buffers)	929	1,267
Chinook rate (Number/mt pollock)*	0.018	0.025

* Based on 2025 pollock allocations



CHINOOK & CHUM PSC AND POLLOCK CATCH

A season

B season

Pollock (mt)	Chinook (n)	Chum (n)	Pollock (mt)	Chinook (n)	Chum (n)
277,144	6,941	223	340,733	1,984	68,931
Rate (n/mt)	0.025	0.0008	Rate (n/mt)	0.006	0.202

Catch totals include all IPA participants (PCC, HSCC, OP, CDQ)



WESTERN ALASKA CHINOOK & CHUM PSC

Chinook

Chum

Total Chinook (n)	WAK + Up/Mid Yukon (n)
8,925	6,533*

Total Chum (n)	WAK + Up/Mid Yukon (n)
69,154	4,149**

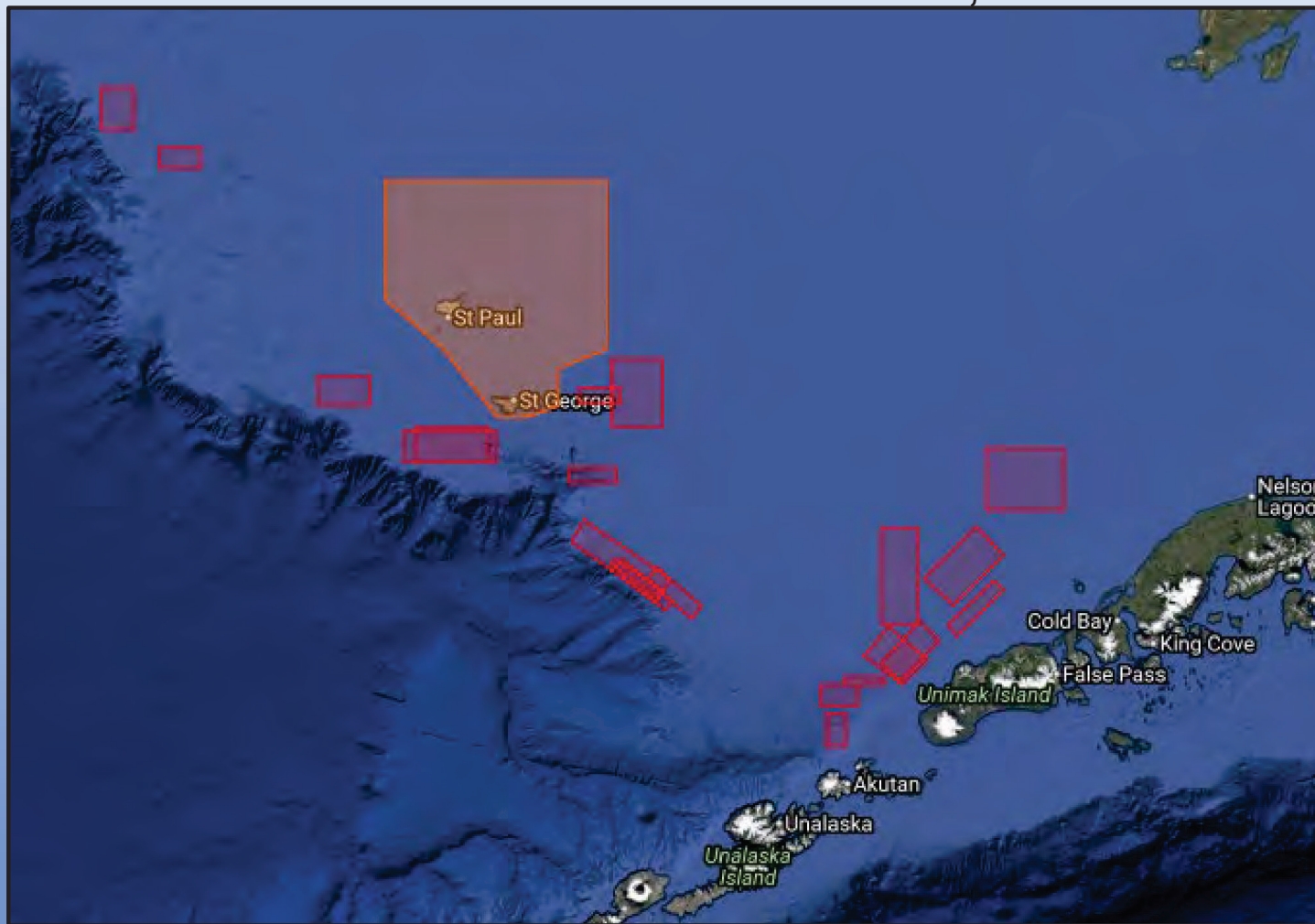
*estimated by applying the 2025 stock proportions to the CP total catch

**estimated by applying the 2025 BBSRI stock proportions to the CP total catch

2025: PSC = 19,797, n = 1,545						
Russia	77	36-131	0.004	0.002	0.007	0.00
Seward Pen./Norton Sound	442	225-676	0.022	0.011	0.034	0.00
Yukon Alaska	856	661-1,116	0.043	0.033	0.056	0.00
Yukon Canada	588	456-731	0.030	0.023	0.037	0.00
Kuskokwim/Bristol Bay	12,619	12,153-13,062	0.637	0.614	0.660	0.00
North Alaska Peninsula	2,945	2,662-3,247	0.149	0.134	0.164	0.00
Chignik/Kodiak	27	6-62	0.001	0.000	0.003	0.00
Cook Inlet	180	113-262	0.009	0.006	0.013	0.00
Copper	34	7-75	0.002	0.000	0.004	0.00
Aleak/Situk	6	0-29	0.000	0.000	0.001	0.51
Southeast AK	426	318-553	0.022	0.016	0.028	0.00
British Columbia	1,113	919-1,316	0.056	0.046	0.066	0.00
West Coast U.S.	485	367-613	0.025	0.019	0.031	0.00

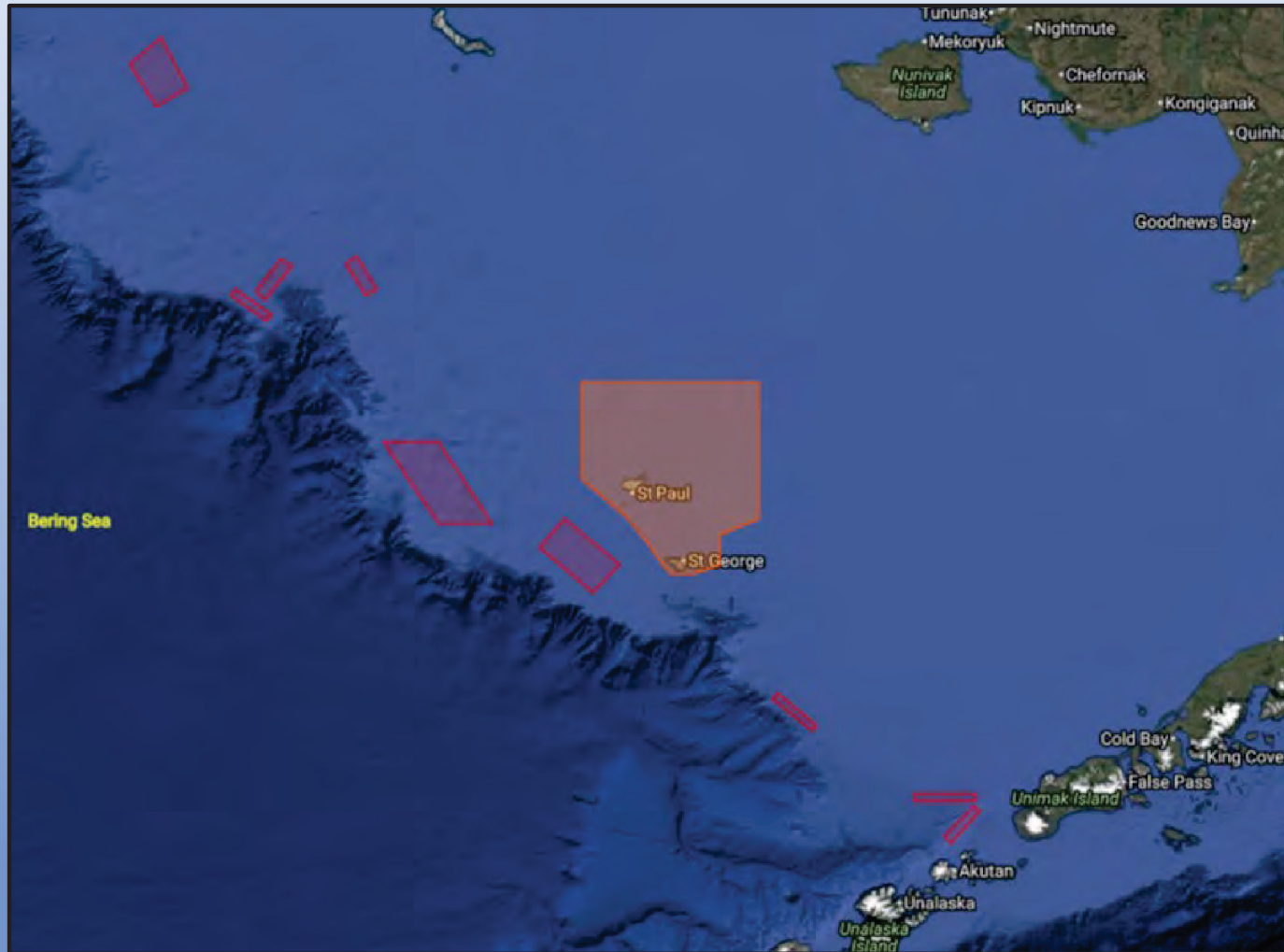


CHINOOK BYCATCH AVOIDANCE AREAS, CP SECTOR 2025

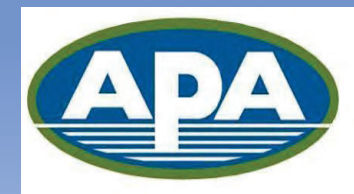


Week	1/31	2/7	2/14	2/21	3/7	3/14	4/4	4/11	9/19	10/10	10/17	10/24	10/31
Number of CPs excluded from BAAs	9	9	8	6	2	8	0	0	2	3	3	0	0

CHUM BYCATCH AVOIDANCE AREAS, CP SECTOR 2025

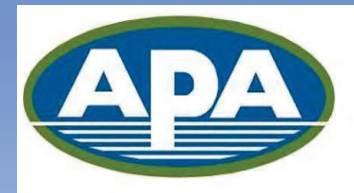
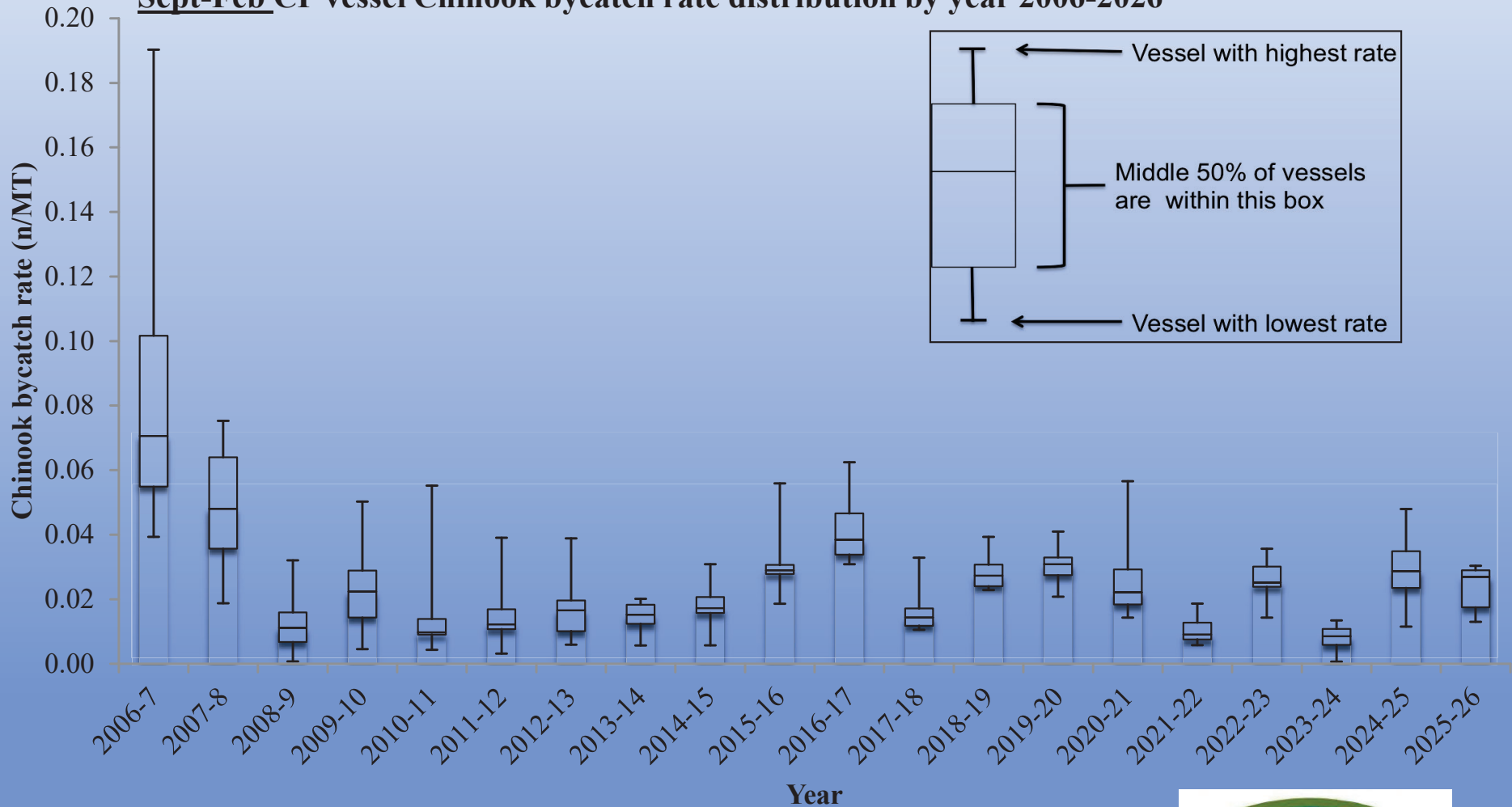


Week	7/18	8/1	8/15	8/22	8/29	9/5	9/26
Number of CPs excluded from BAAs	1	0	0	4	7	3	1

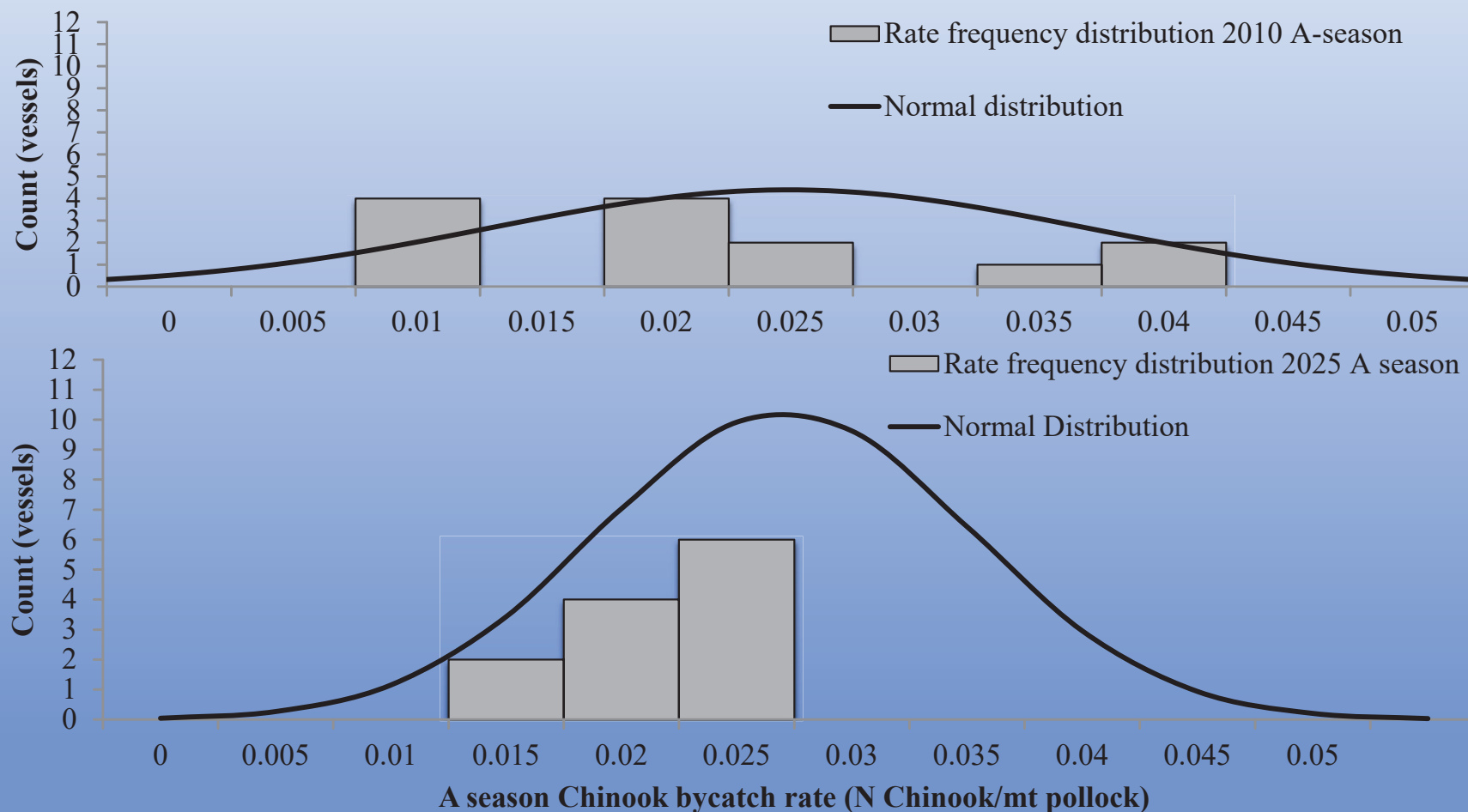


EFFECTS OF INCENTIVE PLAN AGREEMENT

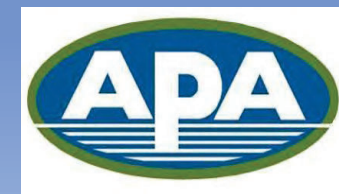
Sept-Feb CP vessel Chinook bycatch rate distribution by year 2006-2026



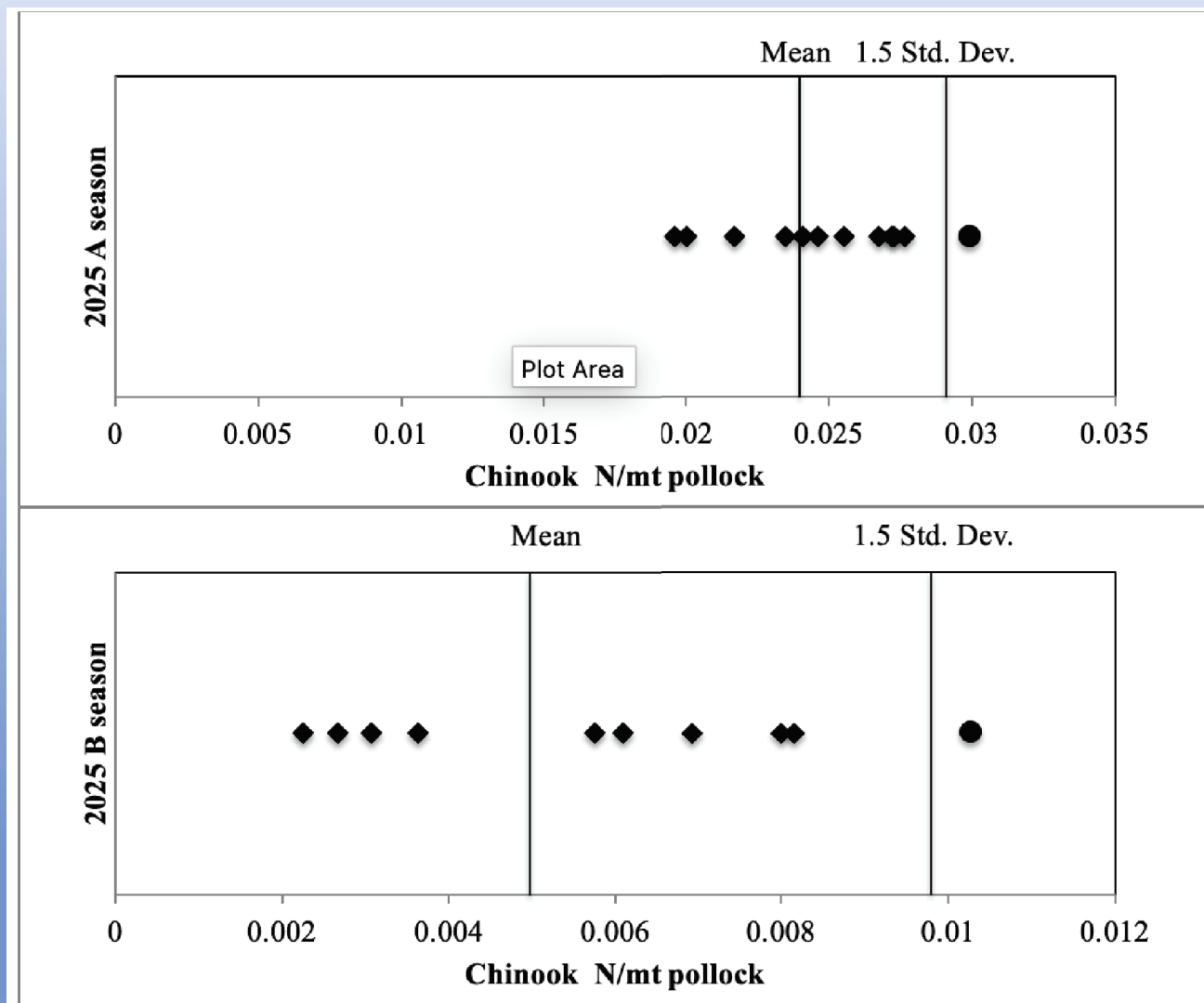
EFFECTS OF INCENTIVE PLAN AGREEMENT



Upper panel: A-Season CP Vessel Chinook Bycatch Rate Frequency Distribution for 2010 with a variance pre-Amendment 91 of 0.0014 and Lower panel: Distribution for 2025 with variance equal to 0.0002.



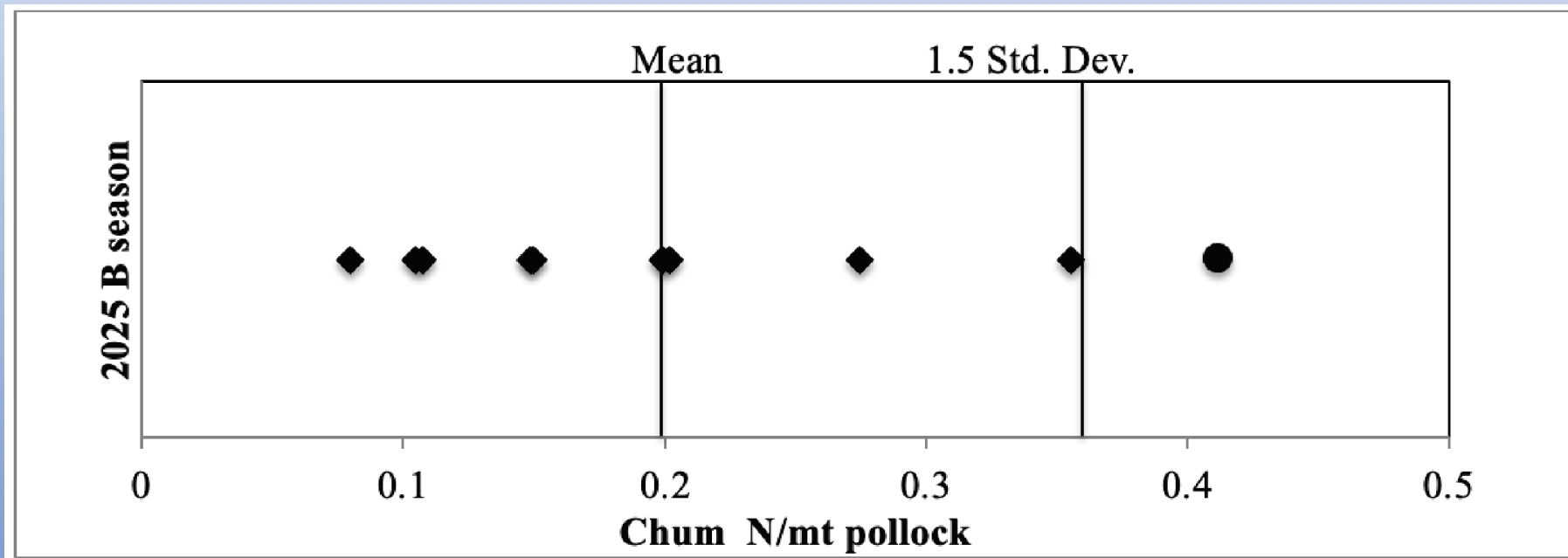
EFFECTS OF INCENTIVE PLAN AGREEMENT



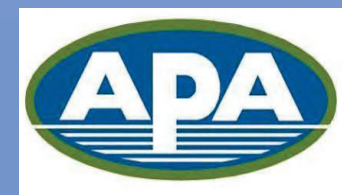
Fleetwide Chinook bycatch ratio distribution for 2025 fishing seasons. Circles denote outlier vessels.

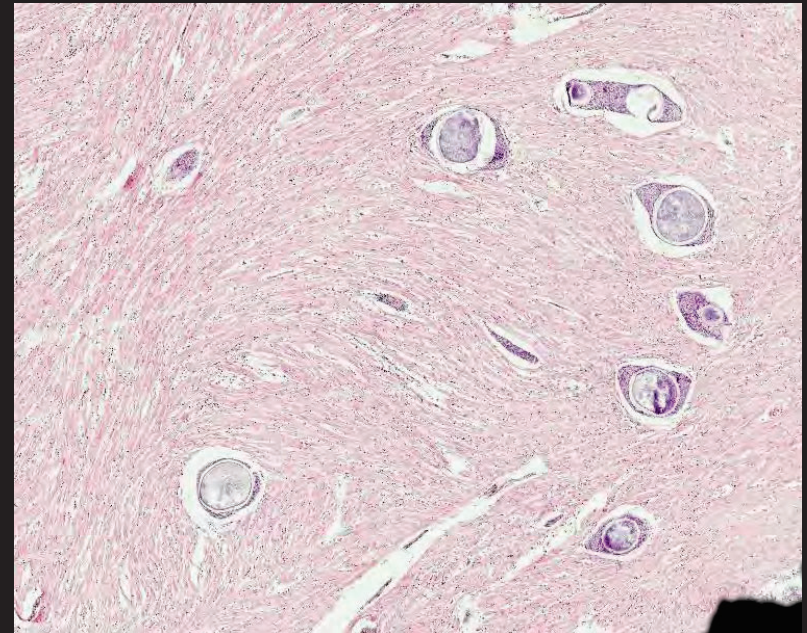
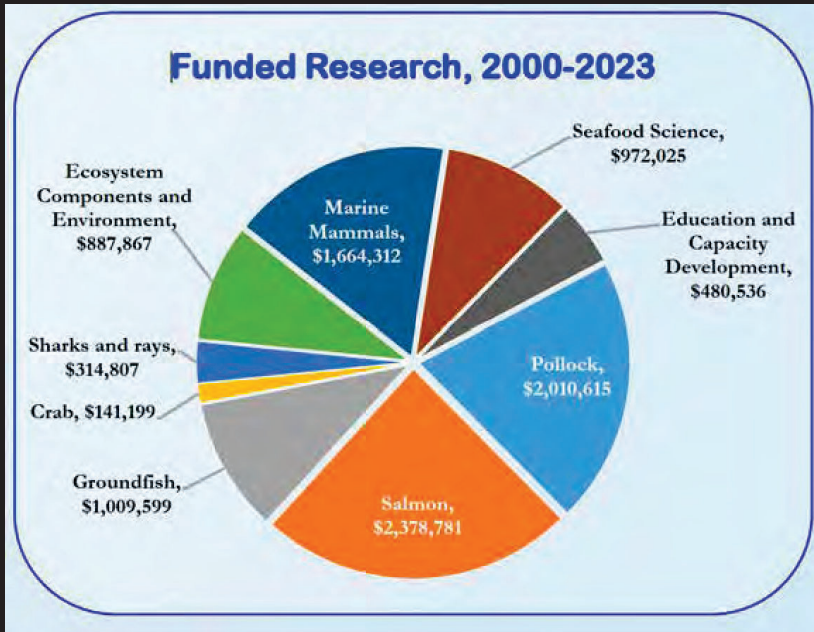


EFFECTS OF INCENTIVE PLAN AGREEMENT



Fleetwide chum bycatch ratio distribution for the 2025 B season. Circle denotes outlier vessel.





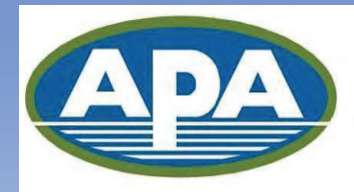
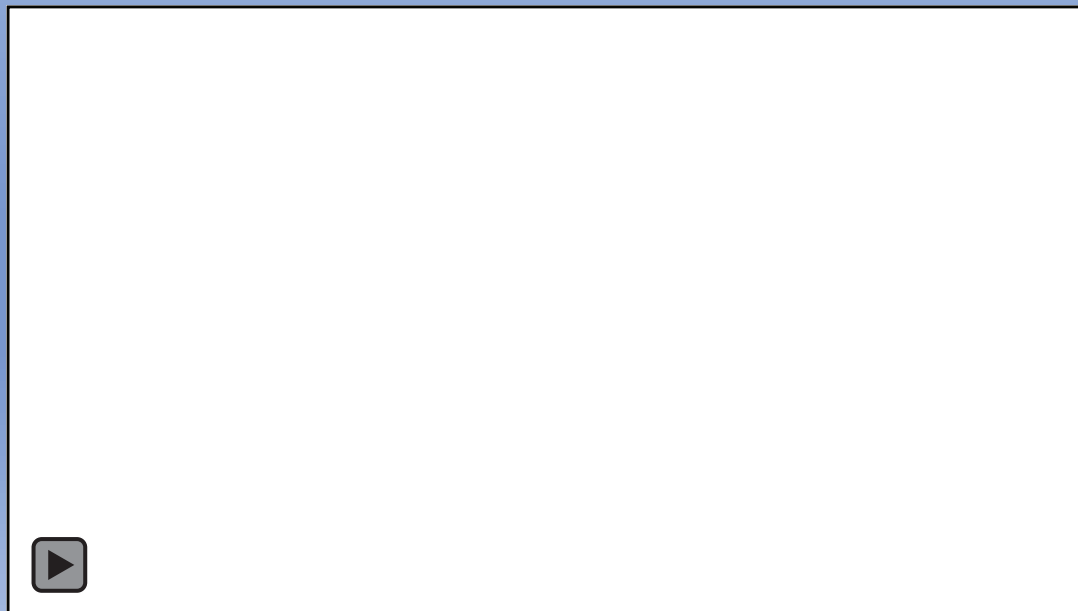
ONGOING SALMON RESEARCH

- Species Distribution Modeling Chinook salmon (Garcia et al.)
- Yukon River and Norton Sound chum salmon marine ecology (Pinchuk et al.)
- Salmon Carrying Capacity (McPhee et al.)
- Marine drivers of *ichthyophonus* infection in Western Alaskan salmon (Clinton et al.)



GEAR RESEARCH AND DEVELOPMENT

- All vessels continue to utilize a salmon excluder device in accordance with Amendment 110 regulations
- All CP vessels operate with a live-feed camera system allowing them to view catch composition in real time helping mitigate lightning strike events
- Continuing work with Craig Rose through NOAA BREP project to develop an Active Excluder
- Chum salmon excluder EFP development (North Pacific Fisheries Research Foundation)



SUMMARY

- The CP IPA continues to rely on real-time information sharing, rolling hotspot avoidance areas, and vessel performance monitoring to influence fishing behavior and minimize both Chinook and chum salmon bycatch.
- The IPAs continued to operate under a low abundance Chinook performance standard in 2025.
- No violations of IPA bycatch avoidance rules or fishing prohibitions occurred during the 2025 reporting year.
- All catcher-processor vessels maintained 100% compliance with required salmon excluder use during the 2025 fishing year.
- During the 2025 fishing year, the fleet harvested 1.362 billion pounds of pollock while taking 8,925 Chinook salmon, resulting in a bycatch rate of approximately one Chinook salmon for every 152,626 pounds of pollock harvested.
- Over the most recent five-year period (2021–2025), Chinook bycatch rates represent an approximate 68% reduction from the pre-Amendment 91 years.
- 2025 CV WAK chum proportion was 6.4%. By contrast, the long-term average proportion of WAK chum has been 18%. This suggests that the IPAs have been effective at targeted avoidance of WAK chum.



QUESTIONS- IPA ANNUAL REPORT

