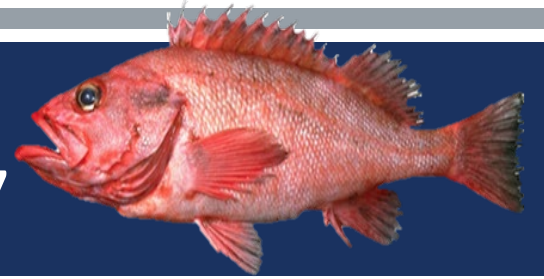


C4 Gulf of Alaska Groundfish Harvest Specifications for 2026-2027 & harvest specifications process, context for C4/C5

Presentation to the Council
December 2025



Final GOA groundfish harvest specifications 2026/2027



Council action

for 2026-2027 final Gulf of Alaska groundfish harvest specifications:

- Total Allowable Catch (TAC) recommendations, OFLs and ABCs recommended by the SSC
- Halibut Prohibited Species Catch (PSC) limits & apportionments
- Halibut Discard Mortality Rates (DMRs)

Presentation Outline

- **Process overview & context for C4/C5 (GOA & BSAI Groundfish)** ([document on eAgenda](#))
 - “Annual Two-Year” Harvest Specifications Process (NMFS AKRO)
 - Harvest specifications framework and BSIA in the North Pacific
 - 2026-2027: Adjustments resulting from Federal shutdown
 - Available information in 2025
 - Update on C3
- **GOA Groundfish (C4)**
 - Status of stocks summary from 2024
 - GOA 2025 bottom trawl survey summary
 - Catch specifications



Two-Year Harvest Specifications Process, Rulemaking (Abby Jahn, NMFS AKRO)

“Annual 2-year process” takes 6 months

- October – Council recommends proposed harvest specifications for 2 years
- Before December Council meeting – NMFS reviews Council recommendations and publishes proposed specifications and requests public comments
- December – Council recommends final harvest specifications for 2 years
- NMFS reviews the Council recommendations and considers public comments
- January – Fisheries open based on final harvest specifications published the previous March (Pacific cod and pollock in the GOA, and Pacific cod, pollock, and Atka mackerel in the BSAI) - NMFS uses inseason adjustment authority to adjust TACs for the species that may be constrained by the Council’s final TACs
- March – NMFS publishes final harvest specifications for 2 years
- Process repeats each year

This year

- NMFS is reviewing the proposed specifications and anticipates publishing them in December
- Final specifications must be published by March 17th/18th 2026

Process: Framework for Catch Specifications / BSIA

⊙ § 600.315 National Standard 2—Scientific Information.

(a) *Standard 2.* Conservation and management measures shall be based upon the best scientific information available.

- North Pacific Stock Assessment Review Process- description of how BSIA is considered in process ([link to document](#))
- Stock prioritization- determines frequency and type of stock assessment documents produced for each stock (operational (full or update), harvest projection, catch report)
 - correction regarding harvest projections



Stock Assessment Definitions: Clarification on Harvest Projections

Process doc p.2 CORRECTION

~~For stocks in Tiers 1-3, harvest projections are prepared in years between operational assessments. For these stocks, the model is updated with recent catch data and, depending on timing and availability, the most recent survey abundance index estimates, and projections of ABC and OFL are provided for that stock or stock complex for the next two years. For stocks in Tier 4-6, catch reports are produced in years when operational assessments are not produced. Catch reports identify the amount of catch that has occurred in recent years relative to TAC, ABC, and OFL levels. These reports are prepared by staff at the request of the Plan Teams and the SSC, to ensure that sudden changes in the fishery or the stock are not missed during years when more substantive stock assessment products (full or update operational stock assessments, or harvest projections) are not available.~~

Correction:

Harvest projection (HP) documents:

- Update projection model with recent catch data.
- Recent survey info provided as a supplement in the document, if available.
- Do **not** update projection model with recent survey information.

Groundfish Stock Assessment Definitions document on SAFE page will be updated to reflect these changes.



Final Specifications for 2026-2027: Process & available information in 2025



- No new SAFE reports for 2025 due to Federal shutdown
 - Exception: 1 Harvest Projection (GOA deepwater flatfish, already reviewed)
- 2024 SAFE Reports, Ecosystem Status Reports (ESR), Ecosystem and Socioeconomic Profiles (ESPs), associated information (basis for BSIA)
 - September 2025 Plan Team, October 2025 SSC Review
 - Recommendations from proposed harvest specifications
- Updated catch reports for all stocks
- Limited survey information from multiple recent surveys



C3 Contextual Information Supporting Groundfish Harvest Specifications- Postponed

Due to the lapse in Federal appropriations the products that were intended to be included under this item are not available.

BSAI and GOA year-end Inseason Management Reports (Council)

- NMFS is planning to complete a 2025 annual Inseason Management Report but will not be available until early 2026.
- NMFS will provide any Inseason Management updates since the October meeting in the December B2 report.
- Previous annual reports can be found [here](#).

Ecosystem Status Reports (ESRs)

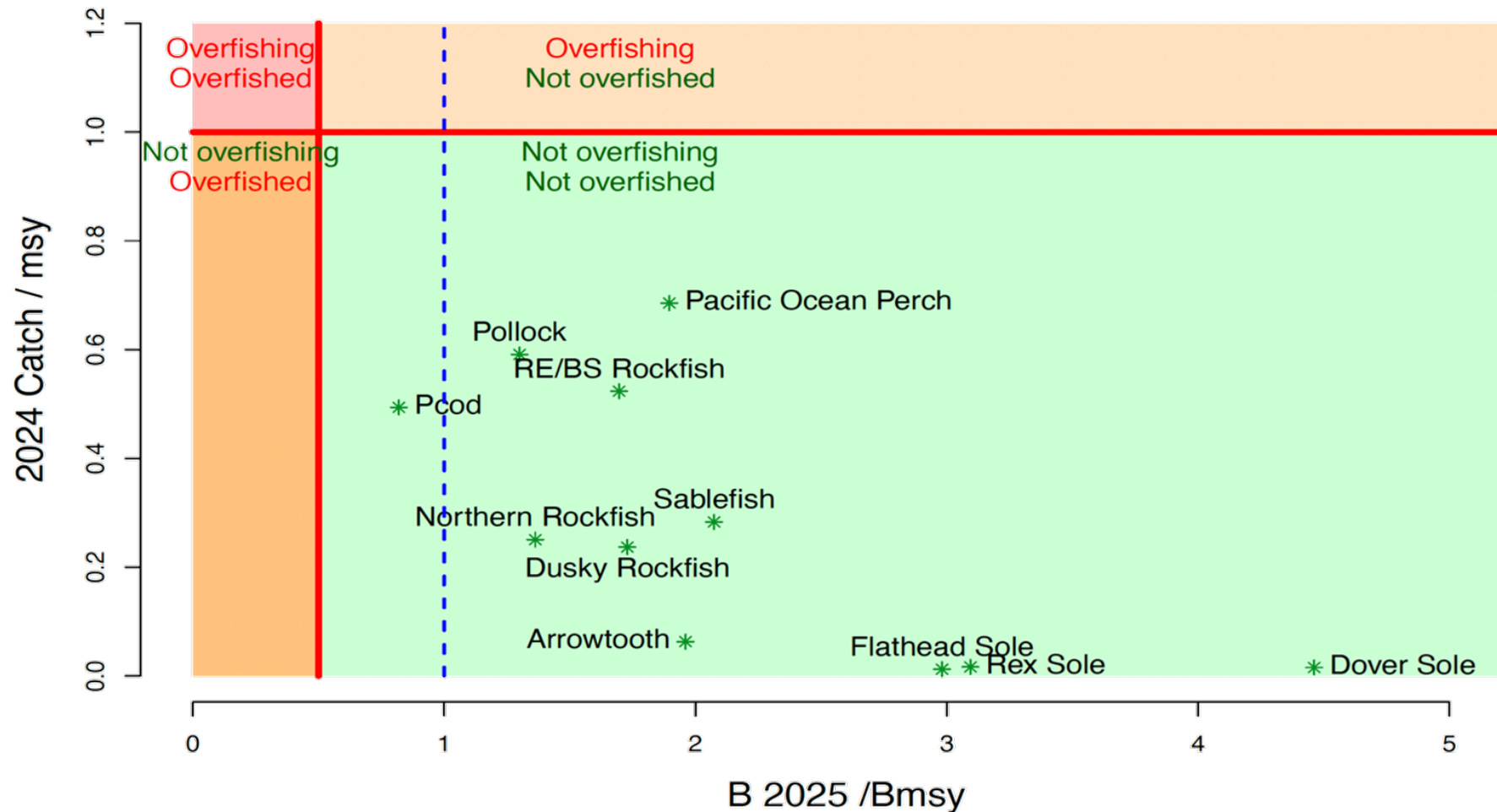
- Complete 2025 ESRs are not available. Prior year ESRs can be found [here](#).
- The Alaska Fisheries Science Center is in the process of determining if 2025 ESRs will be completed and if so, when they will be available.

Economic and Community Indicator Reports

- These reports include relevant information from the Economic Status Report for Groundfish Fisheries of the Gulf of Alaska and Bering Sea/Aleutian Islands (Groundfish Econ SAFE) and the Annual Community Engagement and Participation Overview (ACEPO). The most recent versions of these reports, including an unreviewed, preliminary 2025 Groundfish Econ SAFE are located on the [Human Dimensions of Fisheries Data Explorer](#).
- The SSC may schedule presentations of these reports at a future meeting as part of the ongoing process to improve the availability of socio-economic information for harvest specifications.



GOA Groundfish stock status summary (from 2024)



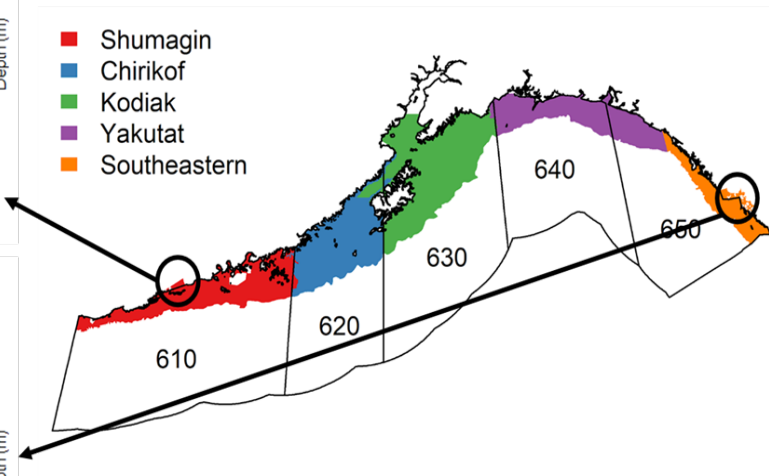
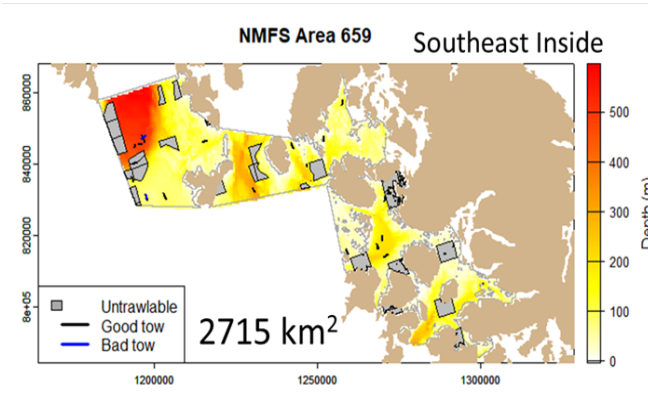
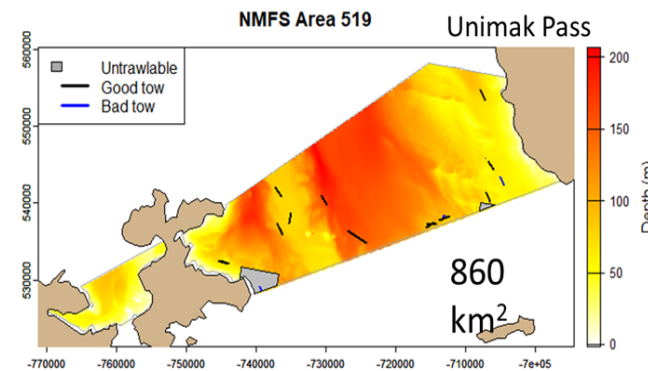
2025 GOA bottom trawl survey (BTS)

from Sept 2025 Presentation to the GFPT

- Last GOA BTS in 2023
- ~17% fewer stations in 2025
- New stratified random survey as of 2025
- Notable changes in biomass as discussed Sept/Oct 2025



GOA Survey Footprint Change



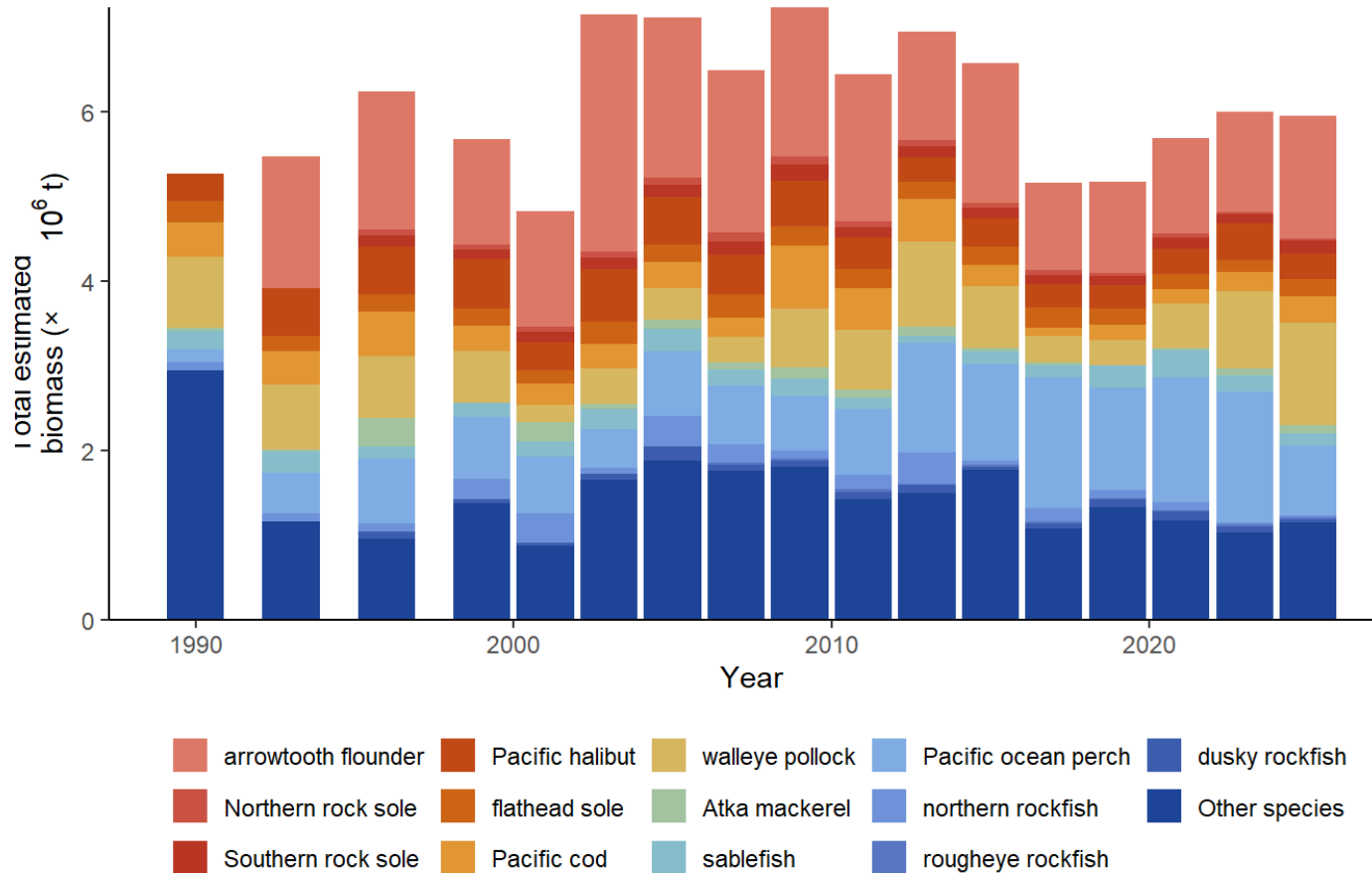
Percent reduction of historic GOA survey sampling areas:
Across entire GOA, ~1.4% reduction of area
In the Western GOA regulatory area, ~1.3% reduction
In the Eastern GOA regulatory area, ~3.2% reduction

Thank you to:
Zack Oyafuso,
Margaret Siple,
Susanne McDermott,
Ned Laman,
Alexandra Dowlin,
and Bethany Riggle

2025 GOA bottom trawl survey (BTS)

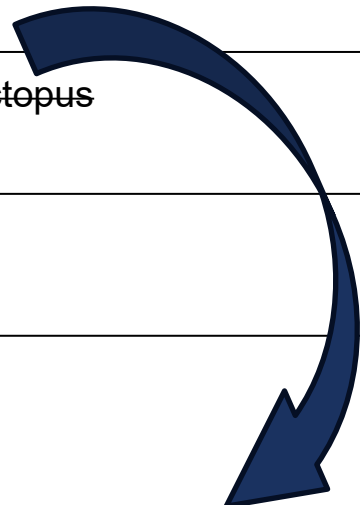
from [Sept 2025 Presentation](#) to the GFPT

Catch composition



2025 GOA groundfish assessment changes due to shutdown:

Assessment Type	GOA Stocks for 2025
Operational full	Pollock, Pacific ocean perch, rougheye & blackspotted rockfish, arrowtooth flounder, rex sole, shallow water flatfish (northern/southern rock sole)
Operational update	Pacific cod, Other rockfish, Shortraker rockfish, Skates, Atka mackerel, Octopus
Harvest Projections (reviewed in Sept/Oct)	Deepwater flatfish
Catch Reports (now for all stocks)	Dusky rockfish Northern rockfish Thornyhead rockfish Demersal shelf rockfish Flathead sole Sharks Pollock, Pacific ocean perch, rougheye & blackspotted rockfish, arrowtooth flounder, rex sole, shallow water flatfish (northern/southern rock sole), Pacific cod, Other rockfish, shortraker rockfish, skates, Atka mackerel, Octopus



GOA Groundfish
Harvest
Specifications
2026/2027 –with
some revisions

Species	Area	2025			Catch as of 11/8/2025	2026			2027		
		OFL	ABC	TAC		OFL	ABC	TAC	OFL	ABC	TAC
Pollock	State GHL	n/a	4,526	n/a		n/a	3,326	n/a	n/a	3,326	n/a
	W (610)	n/a	37,344	37,344	14,029	n/a	27,453	27,453	n/a	27,453	27,453
	C (620)	n/a	82,265	82,265	79,477	n/a	60,477	60,477	n/a	60,477	60,477
	C (630)	n/a	51,605	51,605	39,046	n/a	37,936	37,936	n/a	37,936	37,936
	WYAK	n/a	5,282	5,282	1,861	n/a	3,883	3,883	n/a	3,883	3,883
	W/C/WYAK/state GHL total	210,111	181,022	176,496	134,413	153,971	133,075	129,749	153,971	133,075	129,749
	SEO	12,998	9,749	9,749	2	12,998	9,749	9,749	12,998	9,749	9,749
Pacific Cod	W	n/a	8,710	6,097	5,340	n/a	8,182	5,318	n/a	8,182	5,318
	C	n/a	20,506	15,379	13,844	n/a	19,263	14,447	n/a	19,263	14,447
	E	n/a	2,925	2,194	532	n/a	2,748	2,061	n/a	2,748	2,061
	GOA (total)	38,688	32,141	23,670	19,716	36,459	30,193	21,826	36,459	30,193	21,826
Sablefish	W	n/a	4,746	4,746	3,117	n/a	4,687	4,687	n/a	4,687	4,687
	C	n/a	9,744	9,744	7,319	n/a	9,622	9,622	n/a	9,622	9,622
	WYAK	n/a	2,686	2,686	2,160	n/a	2,652	2,652	n/a	2,652	2,652
	SEO	n/a	5,660	5,660	4,826	n/a	5,589	5,589	n/a	5,589	5,589
	GOA	n/a	n/a	22,836	17,422	n/a	n/a	22,550	n/a	n/a	22,550
	AK total	58,532	47,605	n/a		57,797	47,008	n/a	57,797	47,008	n/a
Alaska-wide OFL and ABC	W	n/a	23,755	13,250	107	n/a	23,902	13,250	n/a	23,902	13,250
	C	n/a	28,279	28,279	2,025	n/a	28,455	28,455	n/a	28,455	28,455
	WYAK	n/a	2,828	2,828	25	n/a	2,846	2,846	n/a	2,846	2,846
	SEO	n/a	1,697	1,697	-	n/a	1,707	1,707	n/a	1,707	1,707
	GOA (total)	69,277	56,559	46,054	2,157	69,610	56,910	46,258	69,610	56,910	46,258
Shallow-Water Flatfish	W	n/a	234	234	1	n/a	231	231	n/a	227	227
	C	n/a	2,616	2,616	76	n/a	2,570	2,570	n/a	2,518	2,518
	WYAK	n/a	1,828	1,828	6	n/a	1,796	1,796	n/a	1,759	1,759
	SEO	n/a	2,280	2,280	4	n/a	2,239	2,239	n/a	2,193	2,193
	GOA (total)	8,263	6,958	6,958	87	8,118	6,836	6,836	7,954	6,697	6,697
Deep-Water Flatfish	W	n/a	3,382	3,382	12	n/a	3,353	3,353	n/a	3,353	3,353
	C	n/a	13,698	13,698	555	n/a	13,582	13,582	n/a	13,582	13,582
	WYAK	n/a	1,436	1,436	-	n/a	1,413	1,413	n/a	1,413	1,413
	SEO	n/a	2,871	2,871	-	n/a	2,825	2,825	n/a	2,825	2,825
	GOA (total)	26,002	21,387	21,387	567	25,743	21,173	21,173	25,743	21,173	21,173
Rex Sole	W	n/a	33,593	14,500	260	n/a	33,716	14,500	n/a	33,716	14,500
	C	n/a	68,261	68,261	12,765	n/a	68,511	68,511	n/a	68,511	68,511
	WYAK	n/a	6,695	6,695	22	n/a	6,719	6,719	n/a	6,719	6,719
	SEO	n/a	10,998	10,998	28	n/a	11,039	11,039	n/a	11,039	11,039
	GOA (total)	142,832	119,547	100,454	18,182	143,347	119,985	100,769	143,347	119,985	100,769
Arrowtooth Flounder	W	n/a	13,592	8,650	64	n/a	13,757	8,650	n/a	13,757	8,650
	C	n/a	21,817	21,817	836	n/a	22,083	22,083	n/a	22,083	22,083
	WYAK	n/a	3,970	3,970	-	n/a	4,018	4,018	n/a	4,018	4,018
	SEO	n/a	2,097	2,097	-	n/a	2,122	2,122	n/a	2,122	2,122
	GOA (total)	50,587	41,476	36,534	836	51,176	41,980	36,873	51,176	41,980	36,873
Flathead Sole	W	n/a	1,753	1,753	1,800	n/a	1,688	1,688	n/a	1,688	1,688
	C	n/a	28,209	28,209	23,870	n/a	27,156	27,156	n/a	27,156	27,156
	WYAK	n/a	2,070	2,070	1,892	n/a	1,993	1,993	n/a	1,993	1,993
	SEO	n/a	6,930	6,930	-	n/a	6,672	6,672	n/a	6,672	6,672
	GOA (total)	46,562	38,962	38,962	27,562	44,826	37,509	37,509	44,826	37,509	37,509
Pacific ocean perch	W	n/a	1,396	1,396	466	n/a	1,346	1,346	n/a	1,346	1,346
	C	n/a	3,680	3,680	1,213	n/a	3,549	3,549	n/a	3,549	3,549
	E	n/a	-	-	n/a	n/a	-	-	n/a	-	-
	GOA (total)	6,064	5,076	5,076	1,679	5,848	4,895	4,895	5,848	4,895	4,895
Northern Rockfish	W	n/a	1,396	1,396	466	n/a	1,346	1,346	n/a	1,346	1,346
	C	n/a	3,680	3,680	1,213	n/a	3,549	3,549	n/a	3,549	3,549
	E	n/a	-	-	n/a	n/a	-	-	n/a	-	-
	GOA (total)	6,064	5,076	5,076	1,679	5,848	4,895	4,895	5,848	4,895	4,895



Adjustments for state waters Pacific cod fisheries (GOA)

Table 2--GOA TAC and GHL for State Waters Pacific Cod (ABCs based on recommendations from October 2025 Council meeting).

Final 2026 GOA Pacific cod ABCs, TACs, and State GHLs (mt)

Specifications	Western	Central	Eastern	Total
ABC	8,182	19,263	2,748	30,193
State GHL	2,864	4,816	687	8,367
(%) of ABC for State GHL	35%	25%	25%	
Federal TAC	5,318	14,447	2,061	21,826

Note: The Federal TAC is designated for Federal fisheries only and does not include the State GHL.

Final 2027 GOA Pacific cod ABCs, TACs, and State GHLs (mt)

Specifications	Western	Central	Eastern	Total
ABC	8,182	19,263	2,748	30,193
State GHL	2,864	4,816	687	8,367
(%) of ABC for State GHL	35%	25%	25%	
Federal TAC	5,318	14,447	2,061 2,194	21,826

Note: The Federal TAC is designated for Federal fisheries only and does not include the State GHL.



GOA Groundfish
Harvest
Specifications-
2026/2027 OFLs,
ABCs, TACs
REVISED Table 1
(1 of 2)

Preliminary

Species	Area	2025			Catch as of 11/8/2025	2026			2027		
		OFL	ABC	TAC		OFL	ABC	TAC	OFL	ABC	TAC
Shortraker Rockfish	W	n/a	34	34	3	n/a	34	34	n/a	34	34
	C	n/a	189	189	361	n/a	189	189	n/a	189	189
	E	n/a	424	424	136	n/a	424	424	n/a	424	424
	GOA (total)	863	647	647	500	863	647	647	863	647	647
Dusky Rockfish	W	n/a	209	209	68	n/a	199	199	n/a	199	199
	C	n/a	5,818	5,818	2,179	n/a	5,527	5,527	n/a	5,527	5,527
	WYAK	n/a	215	215	23	n/a	204	204	n/a	204	204
	SEO	n/a	96	96	-	n/a	91	91	n/a	91	91
	GOA (total)	7,705	6,338	6,338	2,270	7,319	6,021	6,021	7,319	6,021	6,021
Rougheye and Blackspotted Rockfish	W	n/a	224	224	55	n/a	229	229	n/a	229	229
	C	n/a	359	359	130	n/a	366	366	n/a	366	366
	E	n/a	597	597	69	n/a	608	608	n/a	608	608
	GOA (total)	1,576	1,180	1,180	254	1,631	1,203	1,203	1,631	1,203	1,203
Demersal shelf rockfish	W/C/WYAK	361	271	271	253	361	271	271	361	271	271
	SEO	524	394	394	266	524	394	394	524	394	394
Thornyhead Rockfish	W	n/a	206	206	18	n/a	206	206	n/a	206	206
	C	n/a	590	590	73	n/a	590	590	n/a	590	590
	E	n/a	542	542	36	n/a	542	542	n/a	542	542
	GOA (total)	1,784	1,338	1,338	127	1,784	1,338	1,338	1,784	1,338	1,338
Other Rockfish	W/C/WYAK	n/a	1,084	1,084	400	n/a	1,084	1,084	n/a	1,084	1,084
	SEO	n/a	2,421	300	21	n/a	2,421	300	n/a	2,421	300
	GOA (total)	4,618	3,505	1,384	421	4,618	3,505	1,384	4,618	3,505	1,384
Atka mackerel	GOA	6,200	4,700	3,000	967	6,200	4,700	3,000	6,200	4,700	3,000
Big Skate	W	n/a	745	745	105	n/a	745	745	n/a	745	745
	C	n/a	1,749	1,749	1,724	n/a	1,749	1,749	n/a	1,749	1,749
	E	n/a	341	341	262	n/a	341	341	n/a	341	341
	GOA (total)	3,780	2,835	2,835	2,091	3,780	2,835	2,835	3,780	2,835	2,835
Longnose Skate	W	n/a	104	104	81	n/a	104	104	n/a	104	104
	C	n/a	1,894	1,894	684	n/a	1,894	1,894	n/a	1,894	1,894
	E	n/a	538	538	527	n/a	538	538	n/a	538	538
	GOA (total)	3,380	2,536	2,536	1,292	3,380	2,536	2,536	3,380	2,536	2,536
Other Skates	GOA	887	665	665	520	887	665	665	887	665	665
Sharks	GOA	6,521	4,891	4,891	1,536	6,521	4,891	4,891	6,521	4,891	4,891
Octopuses	GOA	1,307	980	964	223	1,307	980	964	1,307	980	964
TOTAL		709,422	590,762	514,619	233,343	649,068	539,299	464,336	648,904	539,160	464,197
<p>Notes: OFL = Overfishing Limit, ABC = Acceptable Biological Catch, TAC = Total Allowable Catch. The ABC is the Annual Catch Limit (ACL), which is specified at the stock or stock complex level. ABC is GOA-wide for all stocks except pollock (W/C/WYAK & SEO), demersal shelf rockfish (W/C/WYAK & SEO), and sablefish (AK). ABC (ACL) is tied to MSA requirements and accountability measures (AMs) and the overall TAC for a stock or stock complex cannot be set above ABC. ABC Spatial apportionments of ABCs are based on survey data, fishery data, or a combination of the two data types, and are meant to inform distribution of the TAC across areas. GOA TAC and catch (not AK wide) for sablefish included in catch totals, ABC for sablefish (AK wide) shown in ABC totals. Catch does not include state fisheries catch for pollock, Pacific cod, or octopus.</p> <p>Sources: 2025 and 2026 Final GOA Harvest Specifications (published March 2025), 2026-2027 Proposed GOA Harvest Specifications (Council motion, October 2025), NMFS Catch Accounting System (CAS).</p>											

Halibut PSC limits by gear type (GOA)

Table 3--Final 2026 and 2027 Pacific Halibut PSC Limits, Allowances, and Apportionments [Values are in metric tons]

Trawl gear			Hook-and-line gear ¹				
			Other than DSR			DSR	
Season	Percent	Amount	Season	Percent	Amount	Season	Amount
January 20 - April 1	30.5	520	January 1 - June 10	86%	220	January 1 - December 31	9
April 1 - July 1	20	341	June 10 - September 1	2%	5		
July 1 - August 1	27	460	September 1 - December 31	12%	31		
August 1 - October 1	7.5	128					
October 1 - December 31	15	256					
Total		1,705			256		9

¹ The Pacific halibut PSC limit for hook-and-line gear is allocated to the demersal shelf rockfish (DSR) fishery and fisheries other than DSR. Since 1995, the Council recommended and NMFS proposed that the hook-and-line sablefish fishery and the pot and jig gear groundfish fisheries be exempt from halibut PSC limits.



Halibut PSC limit trawl apportionments (GOA)

Table 4--Final 2026 and 2027 Apportionment of the Pacific Halibut PSC Limits Apportioned Between the Trawl Gear Shallow-Water and Deep-Water Species Fisheries [Values are in metric tons]

Season	Shallow-water	Deep-water ¹	Total
January 20 - April 1	385	135	520
April 1 - July 1	85	256	341
July 1 - August 1	120	340	460
August 1 - October 1	53	75	128
Subtotal January 20 - October 1	643	806	1,449
October 1 - December 31 ²	n/a	n/a	256
Total	n/a	n/a	1,705

¹ Vessels participating in cooperatives in the Rockfish Program will receive 191 mt of the third season (July 1 – August 1) deep-water species fishery Halibut PSC apportionment.

² There is no apportionment between trawl shallow-water and deep-water species fisheries during the fifth season (October 1 through December 31).



Halibut PSC limit CV-CP hook-and-line split (GOA)

Table 5--Final 2026 and 2027 Apportionments of the “Other Hook and Line Fisheries” Halibut PSC Allowance Between the Hook-and-Line Gear Catcher Vessel and Catcher/Processor Sectors
[Values are in metric tons]

Hook-and-Line gear (Other than DSR) Annual PSC Amount	Hook-and-line Sector	Annual Amount	Season	Seasonal Percentage	Seasonal Amount
256	Catcher Vessel	149	A	86	128
			B	2	3
			C	12	18
	Catcher/Processor	107	A	86	92
			B	2	2
			C	12	13



GOA Halibut Discard Mortality Rates (DMRs)

Table 6-- Final 2026 and 2027 Halibut Discard Mortality Rates for Vessels Fishing in the Gulf of Alaska. (Values are in percent of halibut assumed to be dead.)

Gear	Sector	Groundfish fishery	Halibut discard mortality rate (percent)
Pelagic trawl	Catcher vessel	All	100
	Catcher/processor	All	100
Non-pelagic trawl	Catcher vessel	Rockfish Program	53
	Catcher vessel	All others	62
	Mothership and catcher/processor	All	79
Hook-and-line	Catcher/processor	All	12
	Catcher vessel	All	15
Pot	Catcher vessel and catcher/processor	All	29

