

C4/C5 Groundfish Harvest Specifications, GOA & BSAI

Presentation to the SSC

December 2025



Sara Cleaver & Diana Stram (NPFMC)



SSC action: Final harvest specifications (OFLs, ABCs) to manage the 2026/2027 GOA and BSAI groundfish fisheries

Order of Presentations:

- **Process overview** ([see doc on eAgenda](#))
- **C3 update (1 slide)**
- **Sablefish, GOA Groundfish (select stocks) (C4)**
- **BSAI Groundfish (select stocks) (C5)**

eAgenda C4/C5

Groundfish Harvest Specifications

Groundfish Harvest Specifications for 2026 and 2027 – recommend ABC/OFLs

[C4C5 SSC Action Memo](#) -Uploaded: 11/21/2025 03:55 PM AKST

[C4C5 Groundfish Specs Process Dec 2025](#) -Uploaded: 11/21/2025 12:23 PM AKST

Public comment on all BSAI and GOA Groundfish Specifications Issues

GOA Groundfish Available Information

[C4 GOA 2025 Catch Reports](#) -Uploaded: 11/17/2025 05:25 PM AKST

[C4 ERRATA GOA POP catch report](#) -Uploaded: 11/25/2025 12:23 PM AKST

[C4 GOA 2024 SAFE Report \(LINK\)](#) -Uploaded: 11/17/2025 03:26 PM AKST

[C4 Stock assessment summary of all GOA stocks](#) -Uploaded: 11/17/2025 06:35 PM AKST

[C4 GOA Table 1 OFL ABC TAC Catch PRE MEETING](#) -Uploaded: 11/20/2025 11:39 AM AKST

[C4 Addl metrics for select GOA stocks](#) -Uploaded: 11/25/2025 12:53 PM AKST

[C4 GOA Bottom Trawl Survey Biomass Trends](#) -Uploaded: 11/25/2025 01:17 PM AKST

BSAI Groundfish Available Information

[C5 BSAI 2025 Catch Reports](#) -Uploaded: 11/26/2025 01:42 PM AKST

[C5 BSAI 2024 SAFE Report \(LINK\)](#) -Uploaded: 11/17/2025 03:26 PM AKST

[C5 BSAI Table 1 OFL ABC TAC Catch PRE MEETING](#) -Uploaded: 11/24/2025 12:00 PM AKST

[C5 Stock assessment summary of all BSAI stocks](#) -Uploaded: 11/18/2025 10:03 AM AKST

[C5 Addl risk metrics for select BSAI stocks](#) -Uploaded: 11/25/2025 12:17 PM AKST

[C5 2025 EBS and NBS Bottom Trawl Survey](#) -Uploaded: 11/25/2025 01:21 PM AKST

Process: Framework for Catch Specifications / BSIA (1 of 2)

⦿ § 600.315 National Standard 2—Scientific Information.

(a) *Standard 2.* Conservation and management measures shall be based upon the best scientific information available.

- North Pacific Stock Assessment Review Process- description of how BSIA is considered in process ([link](#) to document)
- Stock prioritization- determines frequency and type of stock assessment documents produced for each stock *correction next slide



Stock Assessment Definitions: Clarification on Harvest Projections

Process doc p.2 CORRECTION

~~For stocks in Tiers 1-3, harvest projections are prepared in years between operational assessments. For these stocks, the model is updated with recent catch data and, depending on timing and availability, the most recent survey abundance index estimates, and projections of ABC and OFL are provided for that stock or stock complex for the next two years. For stocks in Tier 4-6, catch reports are produced in years when operational assessments are not produced. Catch reports identify the amount of catch that has occurred in recent years relative to TAC, ABC, and OFL levels. These reports are prepared by staff at the request of the Plan Teams and the SSC, to ensure that sudden changes in the fishery or the stock are not missed during years when more substantive stock assessment products (full or update operational stock assessments, or harvest projections) are not available.~~

Correction:

Harvest projections (HP):

- Are currently only prepared during for stocks in Tier 3 during the 3rd year of a 4-year schedule .
- Recent survey info provided as a supplement in the document, if available.
- Do **not** update projection model with recent survey information.

Groundfish Stock Assessment Definitions document on SAFE page will be updated to reflect these changes.



Process: Framework for Catch Specifications / BSIA (2 of 2)

◉ § 600.315 National Standard 2—Scientific Information.

(a) *Standard 2.* Conservation and management measures shall be based upon the best scientific information available.

- North Pacific Stock Assessment Review Process- description of how BSIA is considered in process ([link to document](#))
- Stock prioritization- determines frequency and type of stock assessment documents produced for each stock
- SAFE Reports, Plan Team Reports – basis for BSIA
- Groundfish harvest control rules account for scientific uncertainty, may be additional reductions from maxABC
- SSC provides review of information as well as recommendations for OFLs/ABCs based on BSIA.
- NMFS certifies that such recommendations are consistent with NS2 (e.g., 2024 SAFE Report).



Two-Year Harvest Specifications Process, Rulemaking (Gretchen Harrington, NMFS AKRO)

“Annual 2-year process” takes 6 months

- October – Council recommends proposed harvest specifications for 2 years
- Before December Council meeting – NMFS reviews Council recommendations and publishes proposed specifications and requests public comments
- December – Council recommends final harvest specifications for 2 years
- NMFS reviews the Council recommendations and considers public comments
- January – Fisheries open based on final harvest specifications published the previous March (Pacific cod and pollock in the GOA, and Pacific cod, pollock, and Atka mackerel in the BSAI) - NMFS uses inseason adjustment authority to adjust TACs for the species that may be constrained by the Council’s final TACs
- March – NMFS publishes final harvest specifications for 2 years
- Process repeats each year



This year

- NMFS is reviewing the proposed specifications and anticipates publishing them in December
- Final specifications must be published by March 17th/18th 2026

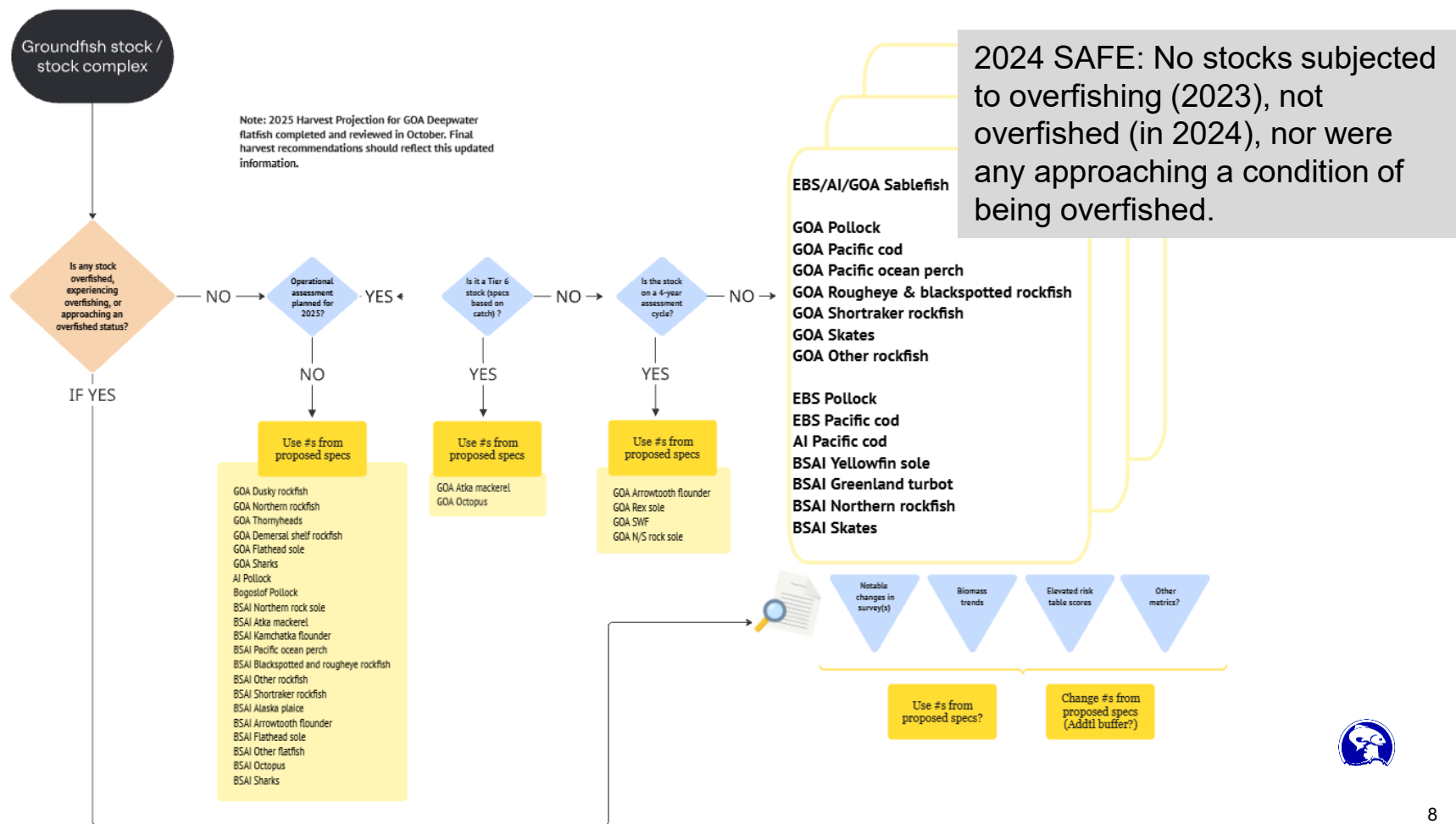


Final Specifications for 2026-2027: Available information in 2025

- No new SAFE reports for 2025 due to Federal shutdown
- 2024 SAFE Reports, Ecosystem Status Reports (ESR), Ecosystem and Socioeconomic Profiles (ESPs), associated information
 - September 2025 Plan Team, October 2025 SSC Review
 - Recommendations for proposed harvest specifications
- 1 Harvest Projection (GOA deepwater flatfish, already reviewed)
- Updated catch reports for all stocks
- Limited survey information from multiple recent surveys



Process- SSC Review of stocks



C3 Contextual Information Supporting Groundfish Harvest Specifications- Postponed

Due to the lapse in Federal appropriations the products that were intended to be included under this item are not available.

BSAI and GOA year-end Inseason Management Reports (Council)

- NMFS is planning to complete a 2025 annual Inseason Management Report but will not be available until early 2026.
- NMFS will provide any Inseason Management updates since the October meeting in the December B2 report.
- Previous annual reports can be found [here](#).

Ecosystem Status Reports (ESRs)

- Complete 2025 ESRs are not available. Prior year ESRs can be found [here](#).
- The Alaska Fisheries Science Center is in the process of determining if 2025 ESRs will be completed and if so, when they will be available.

Economic and Community Indicator Reports

- These reports include relevant information from the Economic Status Report for Groundfish Fisheries of the Gulf of Alaska and Bering Sea/Aleutian Islands (Groundfish Econ SAFE) and the Annual Community Engagement and Participation Overview (ACEPO). The most recent versions of these reports, including an unreviewed, preliminary 2025 Groundfish Econ SAFE are located on the [Human Dimensions of Fisheries Data Explorer](#).
- The SSC may schedule presentations of these reports at a future meeting as part of the ongoing process to improve the availability of socio-economic information for harvest specifications.



C4 Gulf of Alaska Groundfish & Joint (AK Sablefish)

Presentation to the SSC

December 2025



Sara Cleaver (NPFMC)



GOA Groundfish Harvest Specifications- Preliminary 2026/2027 OFLs, ABCs, TACs based on proposed rule Table 1 (1 of 2)

Table 1. Harvest Specifications for Groundfish in the Gulf of Alaska (metric tons) for 2026 and 2027
pre-meeting DRAFT, November 2025

Species	Area	2024			Catch through 12/31/2024	2025			Catch through 11/8/2025	2026*			2027*		
		OFL	ABC	TAC		OFL	ABC	TAC		OFL	ABC	TAC	OFL	ABC	TAC
Pollock	State GHL	n/a	4,769	n/a		n/a	4,526	n/a		n/a	3,326	n/a	n/a	3,326	n/a
	W (610)	n/a	38,882	38,882	31,585	n/a	37,344	37,344	14,029	n/a	27,453	27,453	n/a	27,453	27,453
	C (620)	n/a	90,937	90,937	71,727	n/a	82,265	82,265	79,477	n/a	60,477	60,477	n/a	60,477	60,477
	C (630)	n/a	50,587	50,587	20,717	n/a	51,605	51,605	39,046	n/a	37,936	37,936	n/a	37,936	37,936
	WYAK	n/a	5,565	5,565	1,382	n/a	5,282	5,282	1,861	n/a	3,883	3,883	n/a	3,883	3,883
	Subtotal	269,916	190,740	186,971	125,411	210,111	181,022	176,496	134,413	153,971	133,075	129,749	153,971	133,075	129,749
Pacific Cod	SEO	12,998	9,749	9,749	-	12,998	9,749	9,749	2	12,998	9,749	9,749	12,998	9,749	9,749
	Total	282,914	200,489	195,720	125,411	223,109	190,771	186,245	134,415	166,969	142,824	139,498	166,969	142,824	139,498
	W	n/a	8,745	6,121	4,476	n/a	8,710	6,097	5,340	n/a	8,182	5,318	n/a	8,182	5,318
	C	n/a	20,590	15,442	15,189	n/a	20,506	15,379	13,844	n/a	19,263	14,447	n/a	19,263	14,447
	E	n/a	2,937	2,203	365	n/a	2,925	2,194	532	n/a	2,748	2,061	n/a	2,748	2,061
	Total	38,712	32,272	23,766	20,030	38,688	32,141	23,670	19,716	38,459	30,193	21,826	38,459	30,193	21,826
Sablefish	W	n/a	4,699	4,699	2,777	n/a	4,996	4,746	3,117	n/a	4,687	4,687	n/a	4,687	4,687
	C	n/a	9,651	9,651	7,267	n/a	10,257	9,744	7,319	n/a	9,622	9,622	n/a	9,622	9,622
	WYAK	n/a	2,926	2,926	2,370	n/a	3,125	2,686	2,160	n/a	2,652	2,652	n/a	2,652	2,652
	SEO	n/a	5,320	5,320	4,542	n/a	5,660	5,660	4,826	n/a	5,589	5,589	n/a	5,589	5,589
	GOA Total	n/a	n/a	22,596	16,956	n/a	n/a	22,836	17,422	n/a	n/a	22,550	n/a	n/a	22,550
	AK Total	55,084	47,146	n/a	n/a	58,532	47,605	n/a	n/a	57,797	47,008	n/a	57,797	47,008	n/a
Shallow-Water Flatfish	W	n/a	23,337	13,250	64	n/a	23,755	13,250	107	n/a	23,902	13,250	n/a	23,902	13,250
	C	n/a	27,783	27,783	2,830	n/a	28,279	28,279	2,025	n/a	28,455	28,455	n/a	28,455	28,455
	WYAK	n/a	2,778	2,778	1	n/a	2,828	2,828	25	n/a	2,846	2,846	n/a	2,846	2,846
	SEO	n/a	1,667	1,667	1	n/a	1,697	1,697	-	n/a	1,707	1,707	n/a	1,707	1,707
	Total	68,121	55,565	45,478	2,896	69,277	56,559	46,054	2,157	69,610	56,910	46,258	69,610	56,910	46,258
Deep-Water Flatfish	W	n/a	237	237	8	n/a	234	234	1	n/a	231	231	n/a	231	231
	C	n/a	2,655	2,655	78	n/a	2,616	2,616	76	n/a	2,568	2,568	n/a	2,568	2,568
	WYAK	n/a	1,856	1,856	3	n/a	1,828	1,828	6	n/a	1,795	1,795	n/a	1,795	1,795
	SEO	n/a	2,314	2,314	2	n/a	2,280	2,280	4	n/a	2,238	2,238	n/a	2,238	2,238
	Total	8,387	7,062	7,062	91	8,263	6,958	6,958	87	8,114	6,832	6,832	8,114	6,832	6,832
Rex Sole	W	n/a	3,367	3,367	23	n/a	3,382	3,382	12	n/a	3,353	3,353	n/a	3,353	3,353
	C	n/a	13,639	13,639	539	n/a	13,698	13,698	555	n/a	13,582	13,582	n/a	13,582	13,582
	WYAK	n/a	1,453	1,453	1	n/a	1,436	1,436	-	n/a	1,413	1,413	n/a	1,413	1,413
	SEO	n/a	2,905	2,905	-	n/a	2,871	2,871	-	n/a	2,825	2,825	n/a	2,825	2,825
	Total	25,978	21,364	21,364	563	26,002	21,387	21,387	567	25,743	21,173	21,173	25,743	21,173	21,173
Arrowtooth Flounder	W	n/a	30,409	14,500	490	n/a	33,593	14,500	260	n/a	33,716	14,500	n/a	33,716	14,500
	C	n/a	64,871	64,871	17,634	n/a	68,261	68,261	12,765	n/a	68,511	68,511	n/a	68,511	68,511
	WYAK	n/a	7,870	7,870	31	n/a	6,695	6,695	22	n/a	6,719	6,719	n/a	6,719	6,719
	SEO	n/a	16,099	6,900	27	n/a	10,998	10,998	28	n/a	11,039	11,039	n/a	11,039	11,039
	Total	142,485	119,249	94,141	18,182	142,832	119,547	100,454	18,182	143,347	119,985	100,769	143,347	119,985	100,769
Flathead Sole	W	n/a	13,273	8,650	145	n/a	13,592	8,650	64	n/a	13,757	8,650	n/a	13,757	8,650
	C	n/a	21,307	21,307	890	n/a	21,817	21,817	836	n/a	22,083	22,083	n/a	22,083	22,083
	WYAK	n/a	3,876	3,876	-	n/a	3,970	3,970	-	n/a	4,018	4,018	n/a	4,018	4,018
	SEO	n/a	2,047	2,047	-	n/a	2,097	2,097	-	n/a	2,122	2,122	n/a	2,122	2,122
	Total	49,414	40,503	36,880	1,035	50,587	41,476	36,534	836	51,176	41,980	36,873	51,176	41,980	36,873
Pacific ocean perch	W	n/a	1,787	1,787	1,666	n/a	1,753	1,753	1,800	n/a	1,688	1,688	n/a	1,688	1,688
	C	n/a	28,757	28,757	21,792	n/a	28,209	28,209	23,870	n/a	27,156	27,156	n/a	27,156	27,156
	WYAK	n/a	2,110	2,110	1,946	n/a	2,070	2,070	1,892	n/a	1,993	1,993	n/a	1,993	1,993
	SEO	n/a	7,065	n/a	-	n/a	6,930	6,930	-	n/a	6,672	6,672	n/a	6,672	6,672
	Total	47,466	39,719	39,719	25,404	46,562	38,962	38,962	27,562	44,826	37,509	37,509	44,826	37,509	37,509



GOA Groundfish Harvest Specifications- Preliminary 2026/2027 OFLs, ABCs, TACs based on proposed rule Table 1 (2 of 2)

Species	Area	2024			Catch through 12/31/2024	2025			Catch through 11/8/2025	2026*			2027*		
		OFL	ABC	TAC		OFL	ABC	TAC		OFL	ABC	TAC	OFL	ABC	TAC
Northern Rockfish	W	n/a	2,535	2,535	316	n/a	1,396	1,396	466	n/a	1,346	1,346	n/a	1,346	1,346
	C	n/a	2,280	2,280	822	n/a	3,680	3,680	1,213	n/a	3,549	3,549	n/a	3,549	3,549
	E	n/a	n/a	n/a	n/a	n/a	-	-	n/a	n/a	-	-	n/a	-	-
	Total	5,750	4,815	4,815	1,138	6,064	5,076	5,076	1,679	5,848	4,895	4,895	5,848	4,895	4,895
Shortraker Rockfish	W	n/a	34	34	16	n/a	34	34	3	n/a	34	34	n/a	34	34
	C	n/a	189	189	136	n/a	189	189	361	n/a	189	189	n/a	189	189
	E	n/a	424	424	195	n/a	424	424	136	n/a	424	424	n/a	424	424
	Total	863	647	647	347	863	647	647	500	863	647	647	863	647	647
Dusky Rockfish	W	n/a	145	145	72	n/a	209	209	68	n/a	199	199	n/a	199	199
	C	n/a	7,365	7,365	2,127	n/a	5,818	5,818	2,179	n/a	5,527	5,527	n/a	5,527	5,527
	WYAK	n/a	84	84	5	n/a	215	215	23	n/a	204	204	n/a	204	204
	SEO	n/a	30	30	-	n/a	96	96	-	n/a	91	91	n/a	91	91
	Total	9,281	7,624	7,624	2,204	7,705	6,338	6,338	2,270	7,319	6,021	6,021	7,319	6,021	6,021
Rougheye and Blackspotted Rockfish	W	n/a	197	197	53	n/a	224	224	55	n/a	229	229	n/a	229	229
	C	n/a	315	315	148	n/a	359	359	130	n/a	366	366	n/a	366	366
	E	n/a	525	525	102	n/a	597	597	69	n/a	608	608	n/a	608	608
	Total	1,555	1,037	1,037	303	1,576	1,180	1,180	254	1,631	1,203	1,203	1,631	1,203	1,203
Demersal shelf rockfish	WIC/WYAK	n/a	n/a	n/a	n/a	361	271	271	253	361	271	271	361	271	271
	SEO	376	283	283	188	524	394	394	266	524	394	394	524	394	394
Thornyhead Rockfish	W	n/a	314	314	37	n/a	206	206	18	n/a	206	206	n/a	206	206
	C	n/a	693	693	65	n/a	590	590	73	n/a	590	590	n/a	590	590
	E	n/a	621	621	65	n/a	542	542	36	n/a	542	542	n/a	542	542
	Total	2,170	1,628	1,628	167	1,784	1,338	1,338	127	1,784	1,338	1,338	1,784	1,338	1,338
Other Rockfish	WIC/WYAK	n/a	1,353	1,353	544	n/a	1,084	1,084	400	n/a	1,084	1,084	n/a	1,084	1,084
	SEO	n/a	2,421	300	32	n/a	2,421	300	21	n/a	2,421	300	n/a	2,421	300
	Total	4,977	3,774	1,653	576	4,618	3,505	1,384	421	4,618	3,505	1,384	4,618	3,505	1,384
Atka mackerel	Total	6,200	4,700	4,700	380	6,200	4,700	3,000	967	6,200	4,700	3,000	6,200	4,700	3,000
Big Skate	W	n/a	745	745	153	n/a	745	745	105	n/a	745	745	n/a	745	745
	C	n/a	1,749	1,749	827	n/a	1,749	1,749	1,724	n/a	1,749	1,749	n/a	1,749	1,749
	E	n/a	341	341	112	n/a	341	341	262	n/a	341	341	n/a	341	341
	Total	3,780	2,835	2,835	1,092	3,780	2,835	2,835	2,091	3,780	2,835	2,835	3,780	2,835	2,835
Longnose Skate	W	n/a	104	104	49	n/a	104	104	81	n/a	104	104	n/a	104	104
	C	n/a	1,894	1,894	503	n/a	1,894	1,894	684	n/a	1,894	1,894	n/a	1,894	1,894
	E	n/a	538	538	234	n/a	538	538	527	n/a	538	538	n/a	538	538
	Total	3,380	2,536	2,536	786	3,380	2,536	2,536	1,292	3,380	2,536	2,536	3,380	2,536	2,536
Other Skates	GOA-wide	887	665	665	645	887	665	665	520	887	665	665	887	665	665
Sharks	GOA-wide	6,521	4,891	4,891	1,495	6,521	4,891	4,891	1,536	6,521	4,891	4,891	6,521	4,891	4,891
Octopuses	GOA-wide	1,307	980	980	190	1,307	980	980	223	1,307	980	980	1,307	980	980
TOTAL		765,608	599,784	520,020	220,079	709,422	590,762	514,635	233,343	649,064	539,295	464,332	649,064	539,295	464,332

Notes: ABCs are at the level of the stock or stock complex and shown in "Total" or "GOA-wide" rows. Any quantities shown by area are spatial apportionments of ABC and do not reflect ACLs.

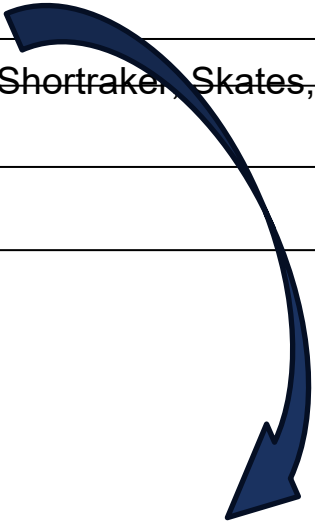
GOA catch (not AK wide catch) for sablefish included in catch totals. ABC for sablefish (AK wide) shown in ABC totals.

*2026-2027 OFLs and ABCs as recommended by the Council in October 2025 and specified in the 2025-2026 final harvest specifications published in March 2025.

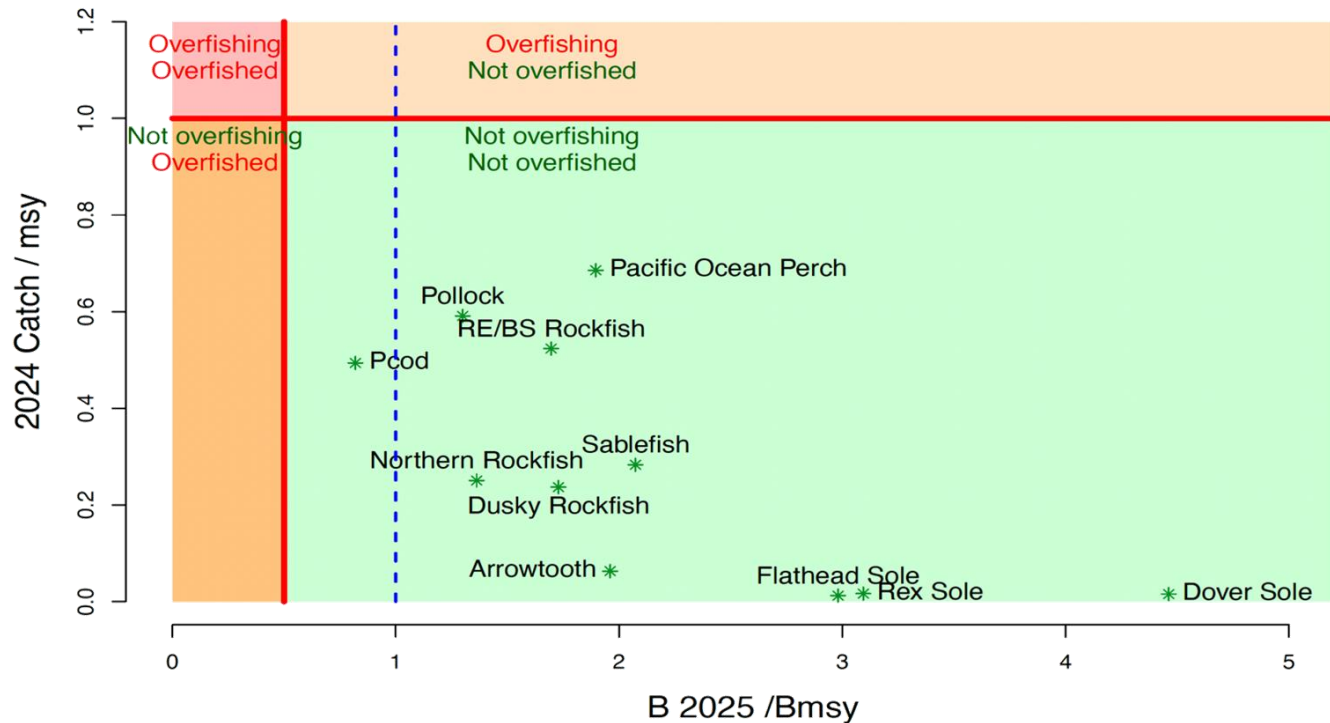
Sources: 2024 and 2025 Final GOA Harvest Specifications (published March 2024), 2025 and 2026 Final GOA Harvest Specifications (published March 2025), 2026-2027 Proposed GOA Harvest Specifications (Council motion, October 2025), NMFS Catch Accounting System (CAS).

GOA 2025 assessment plans and changes due to shutdown:

Assessment Type	GOA Stocks for 2025
Operational full	Pollock, POP, REBS, ATF, Rex sole, SWF (N/S rock sole)
Operational update	Pacific cod, Other rockfish, Shortraker, Skates, Atka mackerel, Octopus
Harvest Projections (reviewed in Sept/Oct)	Deepwater flatfish
Catch Reports (now for all stocks)	Dusky rockfish Northern rockfish Thornyhead rockfish Demersal shelf rockfish Flathead sole Sharks Pollock, POP, REBS, ATF, Rex sole, SWF (N/S rock sole), Pacific cod, Other rockfish, Shortraker, Skates, Atka mackerel, Octopus



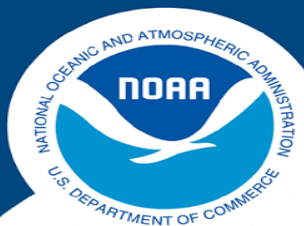
Stock status summary from 2024



GOA Survey info (general)

- All “select” stocks for review use the GOA bottom trawl survey (BTS)
- Pollock and sablefish both use BTS as secondary survey, using acoustic (pollock) and longline (sablefish) surveys as primary
- Several others (shown in slides) use LLS as secondary, some others used but data not shown (ADFG, IPHC)
- Note: **Only operational (full or updates) assessments incorporate most recent survey data into model projections.**
 - Harvest projections do not update the projection model with recent survey information, so the projections of ABC and OFL do not account for recent changes in survey biomass or abundance estimates.
 - Harvest projections do provide updated survey data in the document, when available.





NOAA
FISHERIES

GOA Bottom Trawl Survey Biomass Trends

Nov 2025, adapted from [Sept 2025 Presentation to the GFPT](#)
Only for select stocks*

Thank you to:
Zack Oyafuso,
Margaret Siple,
Susanne McDermott,
Ned Laman,
Alexandra Dowlin,
and Bethany Riggle



NOAA FISHERIES

*As noted in process doc and [Select Stocks](#) table

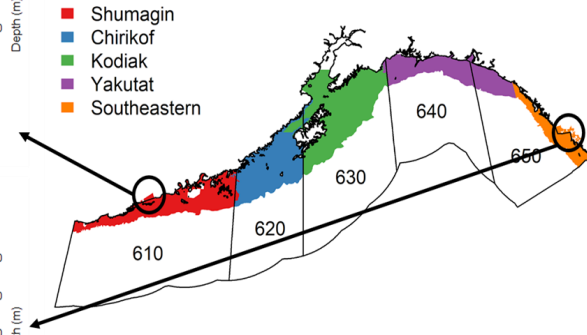
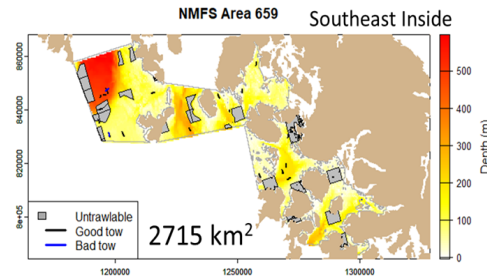
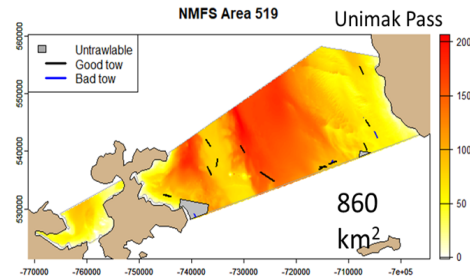
2025 GOA bottom trawl survey (BTS)

from Sept 2025 Presentation to the GFPT

- Last GOA BTS in 2023
- ~17% fewer stations in 2025
- New stratified random survey as of 2025
- Notable changes in biomass as discussed Sept/Oct 2025



GOA Survey Footprint Change

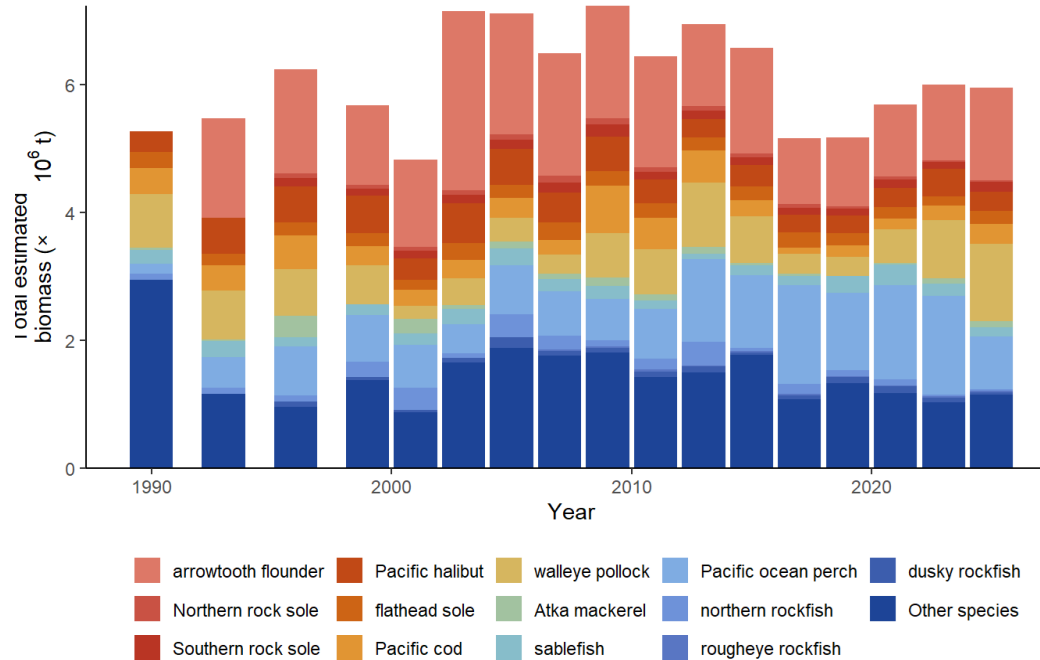


Percent reduction of historic GOA survey sampling areas:
Across entire GOA, ~ 1.4% reduction of area
In the Western GOA regulatory area, ~1.3% reduction
In the Eastern GOA regulatory area, ~3.2% reduction

2025 GOA bottom trawl survey (BTS)

from Sept 2025 Presentation to the GFPT

Catch composition



Alaska Sablefish (Tier 3a, annual)

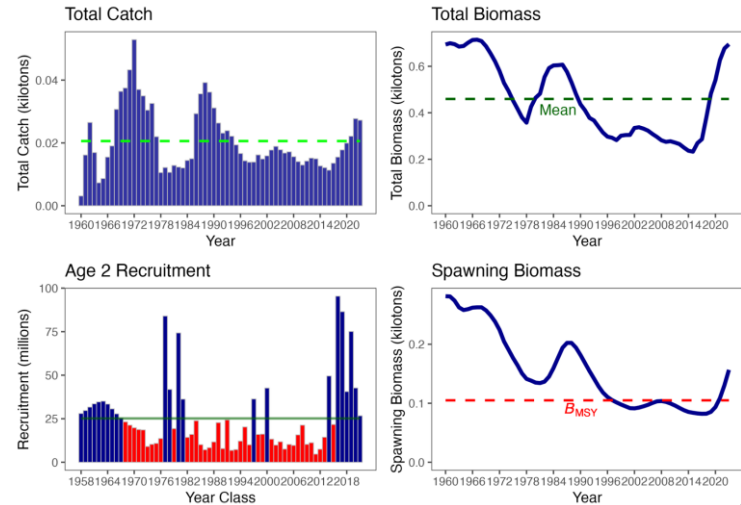
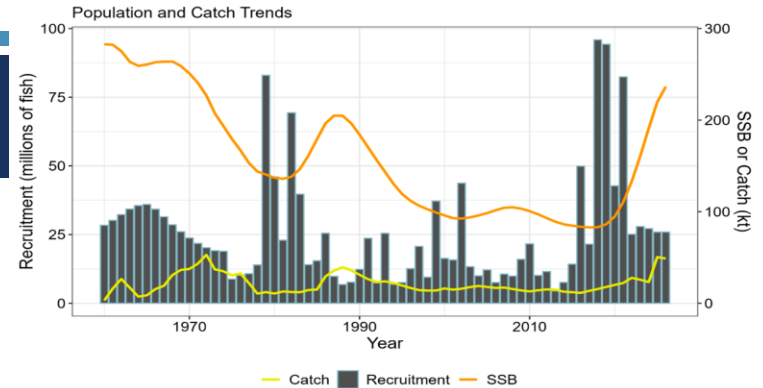
Summary info from 2024 assessment:

- Above B_{MSY} ($B_{73\%}$ in 2025, $B_{80\%}$ in 2026)
- Risk table (2024):
 - No elevated scores from author or PT.
 - Level 2 from SSC for assessment considerations due to the lack of new data...
→ **5% reduction** (Dec 2024, p15)
- Catch for projections:
 - 24,692 t in 2025 (yield ratio of 0.49 assumed based on a 2024 extrapolated catch of 23,152 t and an ABC of 47,146t).

Catch/ABC (2024, 2025 as of 11/8): 0.49, 0.46

2025 ABC: 47,605 t

2026 ABC: 47,008 t



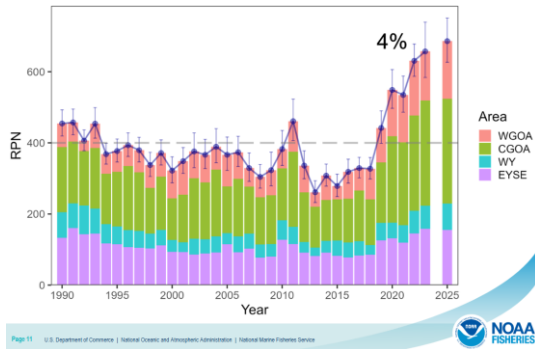
from 2023



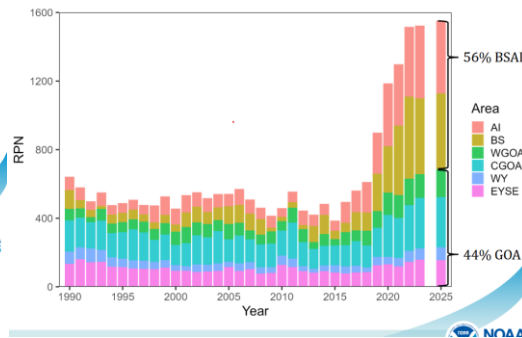
Sablefish: Surveys

GOA Longline Survey (Primary)

GOA Sablefish

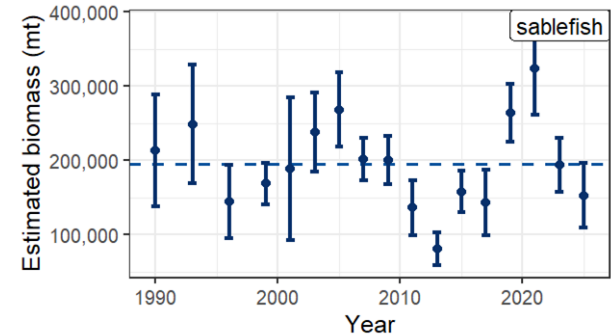


Sablefish AK-wide (2023 BSAI)



2025 RPN +4% from 2023 in GOA

GOA Bottom Trawl Survey (Secondary)



- Biomass estimate in 2025:
~153,000 mt
- 21.3% from 2023



GOA Pollock (Tier 3a, annual)



Summary info from 2024 assessment:

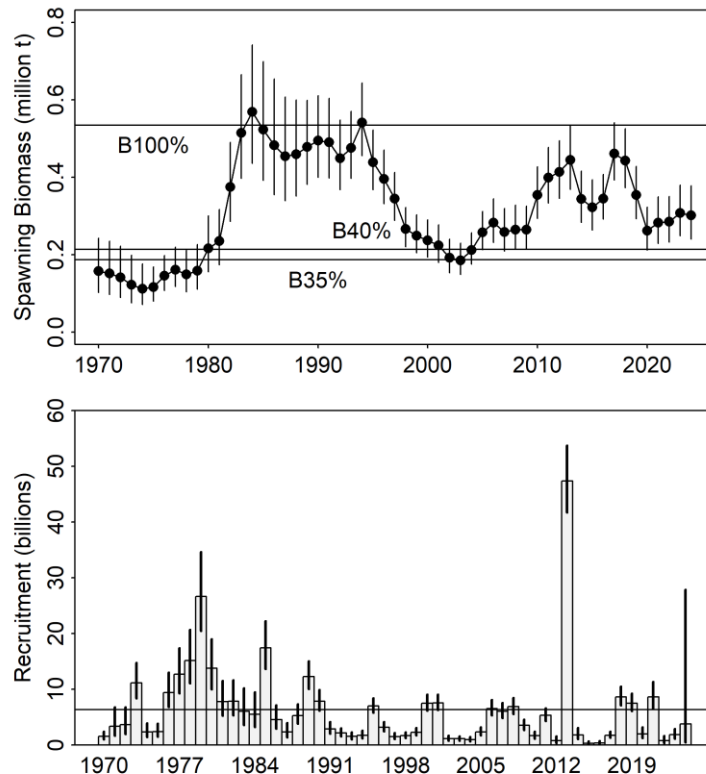
- **Above B_{MSY}** ($B_{45\%}$ in 2025, $B_{37\%}$ in 2026 (196,028 t))
- No elevated risk table scores (2024)
- Catch for projections: Estimated catch of 131,000 t (2024) and maxABCs for 2025 (181,022 t) and 2026 (133,075 t)

Catch*/ABC (2024, 2025 as of 11/8): 0.63, 0.70

*Does not include state catch

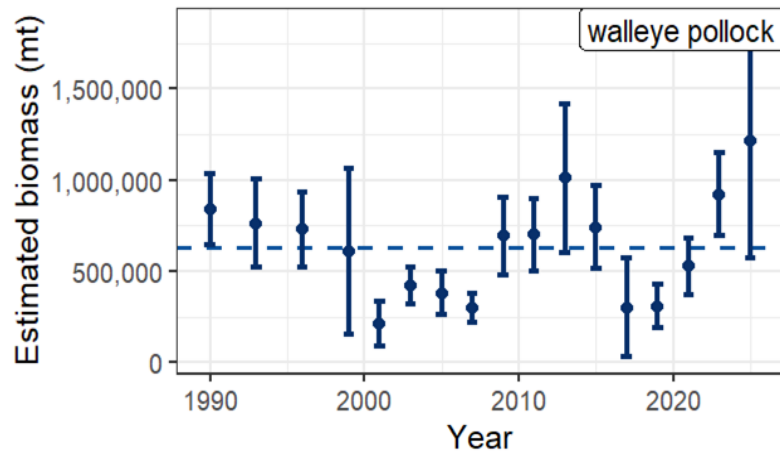
2025 ABC: 190,771 t

2026 ABC: 142,824 t



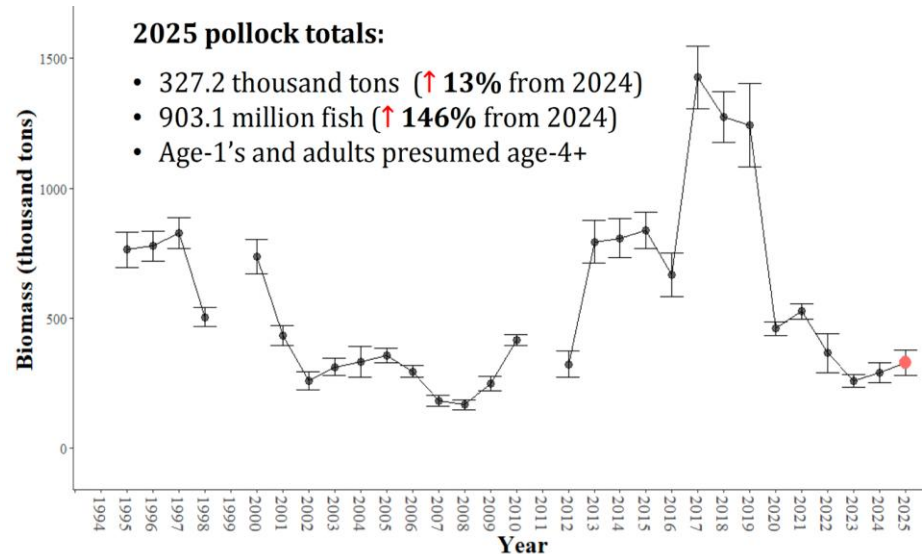
GOA Pollock: Surveys

GOA Bottom Trawl Survey



- Biomass estimate in 2025: ~1,214,000 mt
- +32.1% from 2023 ↑, a few large hauls in 610
- poor fit to NMFS BTS per 2024 SAFE

Shelikof Strait winter survey



GOA Pacific cod (Tier 3b, annual)



Summary info from 2024 assessment:

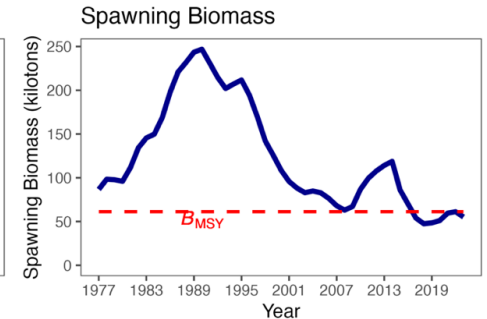
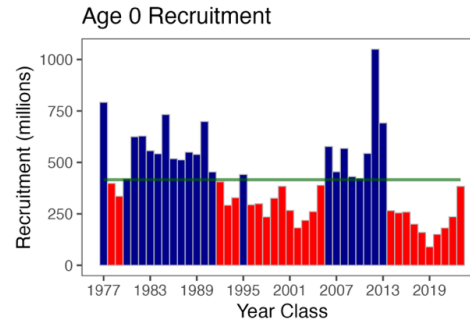
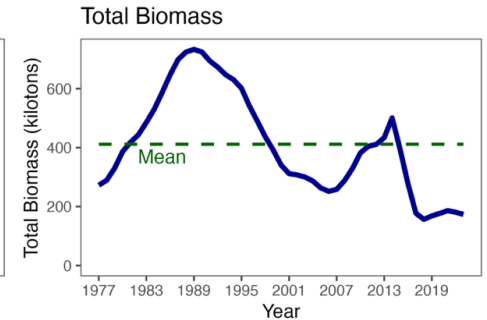
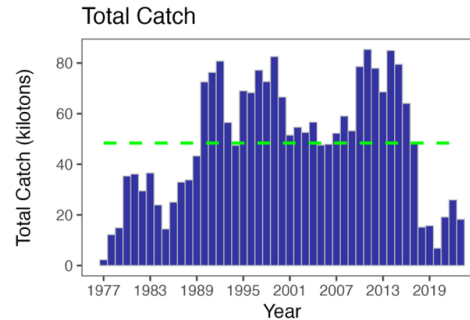
- Below BMSY but above MSST ($B_{28.7\%}$ in 2025, $B_{27.3\%}$ in 2026)
- Risk table (2024):
 - Level 2 (popdy)
 - No reduction
- Catch for projections: maxABC

Catch*/ABC (2024, 2025 as of 11/8) = 0.62, 0.61

*does not include state catch

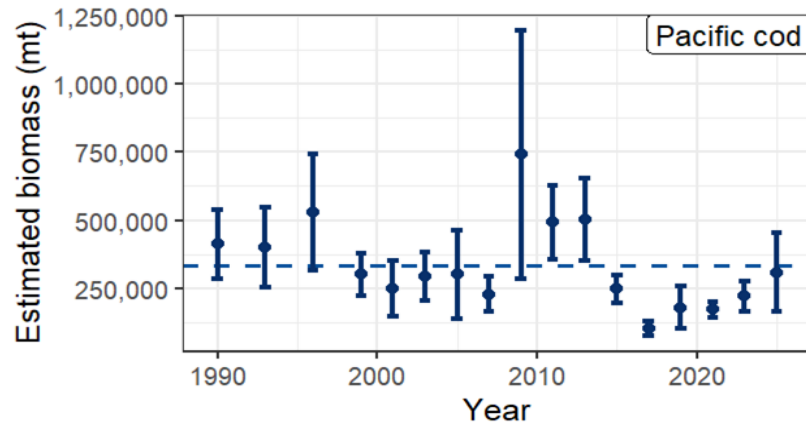
2025 ABC: 32,141 t

2026 ABC: 30,193 t



GOA Pacific cod: Surveys

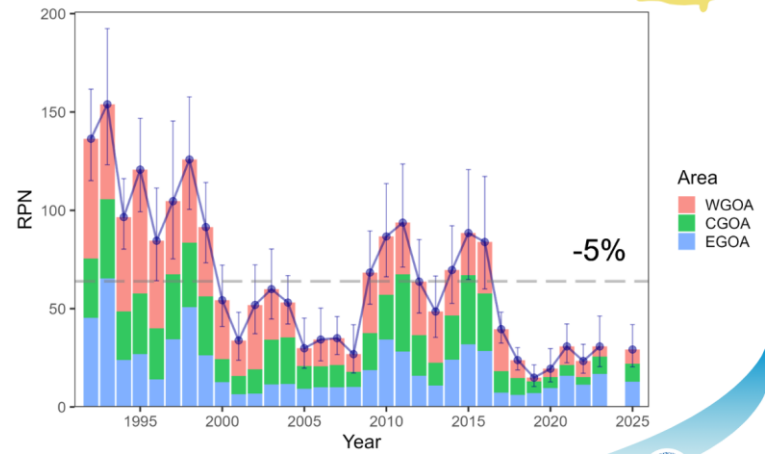
GOA Bottom Trawl Survey



- Biomass estimate in 2025: ~310,000 mt
- +39.2% from 2023 ↑
- Model uses abundance, not biomass

LL survey

GOA P. Cod

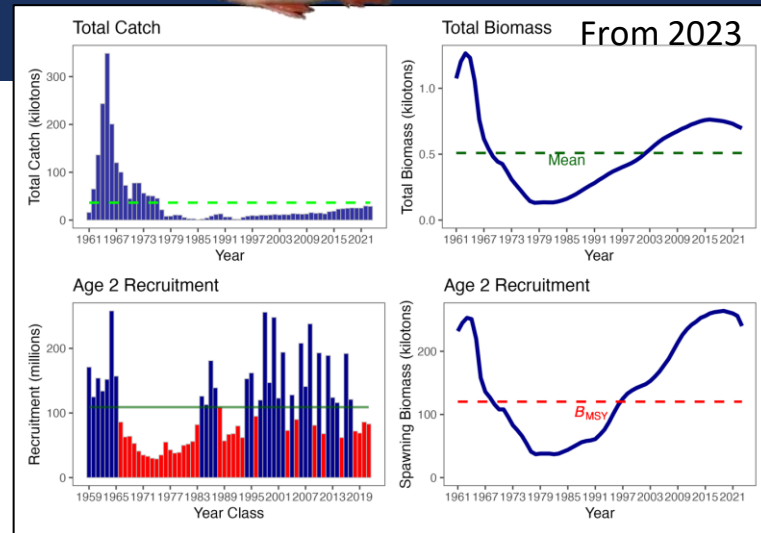


GOA Pacific ocean perch (Tier 3a, biennial) last operational assessment 2023, HP 2024



Summary info from 2023/2024:

- **Above BMSY**, 2025 estimated at 224,800 t (B65%)
- Risk table (2023):
 - Level 2 (assessment), Level 2 (popdy)
 - SSC: Popdy level 1 (Dec 2023, p38)
 - No reduction from maxABC
- Catch for projections:
 - Yield ratio (0.8) from last 3 complete years multiplied by projected ABCs.
 - = 31,058 t (2025) and 29,435t (2026)



Catch/ABC (2024, 2025 as of 11/8): 0.64*, 0.71

*typo in C4 Addtl metrics doc

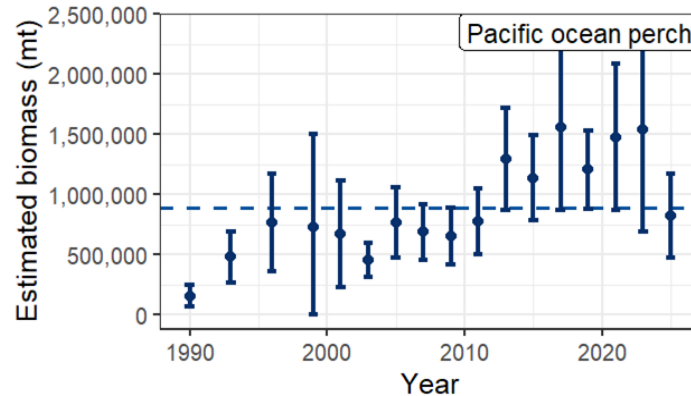
2025 ABC: 38,962 t

2026 ABC: 37,509 t



GOA Pacific ocean perch: BTS Survey

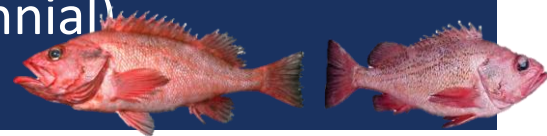
GOA Bottom Trawl Survey



- Biomass estimate in 2025: ~824,000 mt
- -46.4% from 2023 ↓
- About average for time series



GOA Roughey & blackspotted rockfish (Tier 3a, biennial) last operational assessment 2023, HP 2024



Summary info from 2023/2024:

- **Above B_{MSY} (=8,751 t)**
 - 2025 = 13,078 t, 2026= 13,059 t
- **Risk table (2023)**
 - Level 2 (assessment), Level 2 (popdy)
 - **Reduction from maxABC** (SSC Dec 2023, p41-42)
 - **Stairstep method:** 2026 ABC = Mean of 2025 ABC (specified in 2023) and 2026 maxABC estimated in 2024.
 - 2026 maxABC = 1,365 t
 - 2026 ABC = 1,203 t (for 2026, in proposed specs)
- **Catch for projections:**
 - Yield ratio= 0.5 (avg catch: ABC from last 3 complete years)
 - Estimated catches= 656 t (2025) and 667 t (2026)

Catch/ABC (2024, 2025 as of 11/8): 0.29, 0.22

From 2023 (light green is current base model)

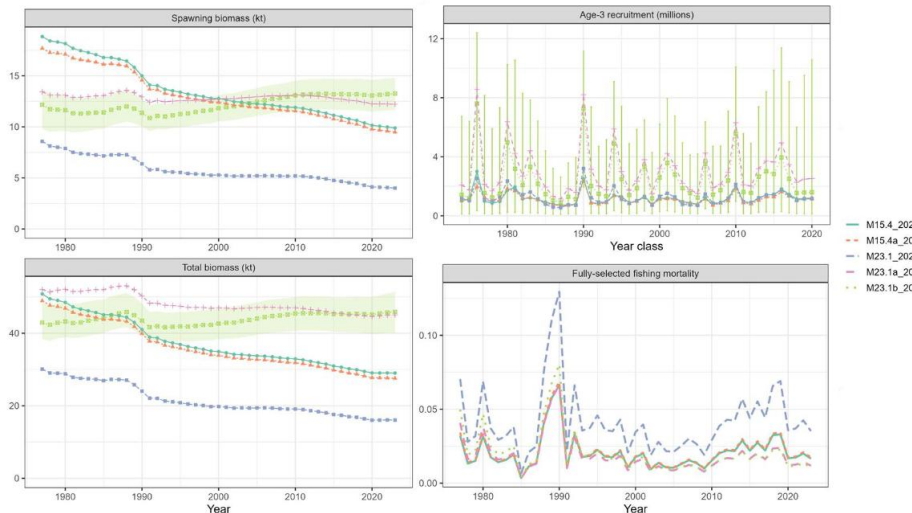


Figure 13-7. Estimates of spawning biomass (kt), total age-3+ biomass (kt), age-3 recruitment in millions, and fully-selected fishing mortality, for all candidate models. For M23.1b (the author-preferred model), we show 95% credible intervals for biomass and recruitment estimates.

2025 ABC: 1,180t

2026 ABC: 1,203t

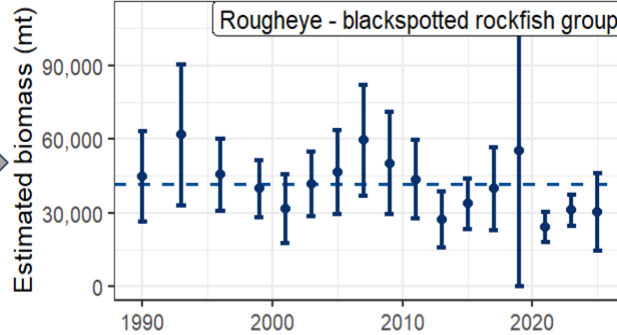


GOA Rougheye & blackspotted rockfish: Surveys

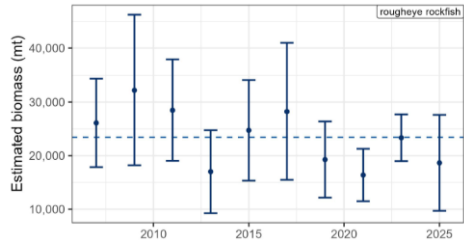
GOA BTS 2025

~30,000 mt =

-2.3% from 2023



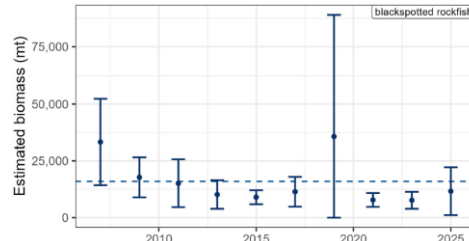
GOA BTS rougheye



~19,000 mt = -20.1% from 2023



GOA BTS blackspotted

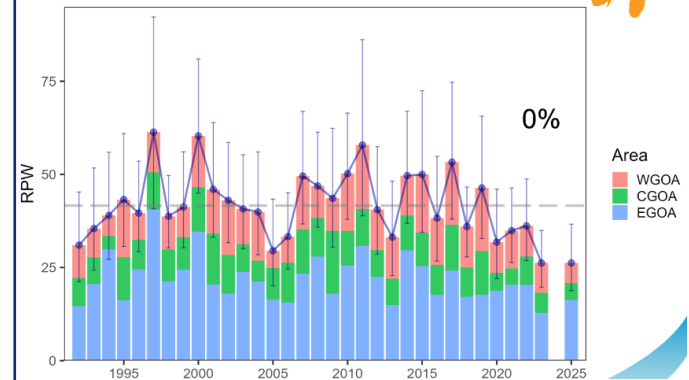


~12,000 mt = +52.3% from 2023



GOA Longline Survey

0% change from 2023



GOA Shortraker rockfish (Tier 5, biennial) last operational assessment 2023



Summary from 2023 SAFE:

2025 Biomass: 28,768t

2025 OFL: 863 t

2025 ABC: 647

- No elevated risk table scores

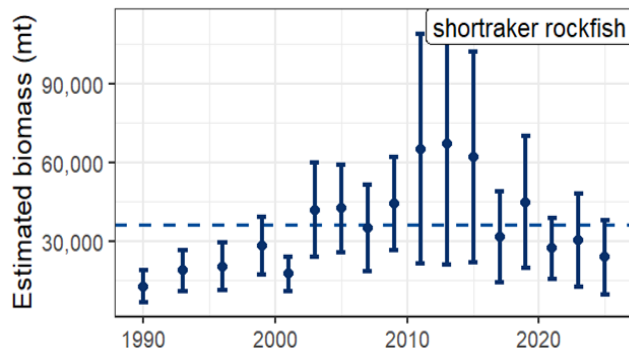
Catch/ABC (2024, 2025 as of 11/8)

= 0.54, 0.77

2025 ABC: 647t

2026 ABC: 647t

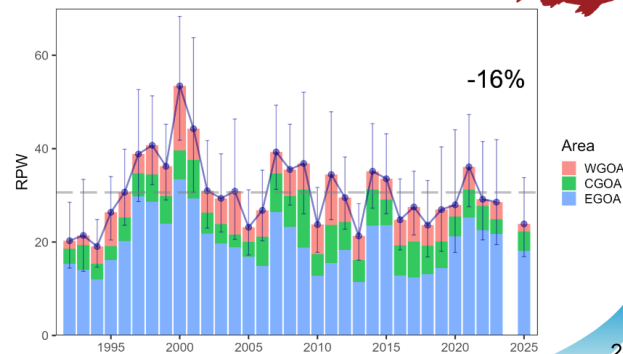
Bottom trawl survey



Biomass estimate in 2025:
~24,000 mt → -21.2% from 2023

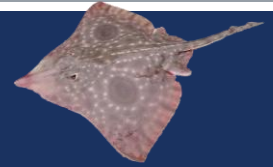


LL survey



GOA Skates (Tier 5, biennial) last operational assessment 2023

Including 2025 GOA BTS
biomass estimates



Summary from 2023 SAFE & updated catch/ABC as of 11/8/25

■ No elevated risk table scores

Big skate

2025 Biomass: 37,804 t
2025 OFL: 3,780 t
2025, 2026 ABC: 2,835

2024 catch/ABC: 0.39
2025 catch/ABC: 0.74

Longnose skate

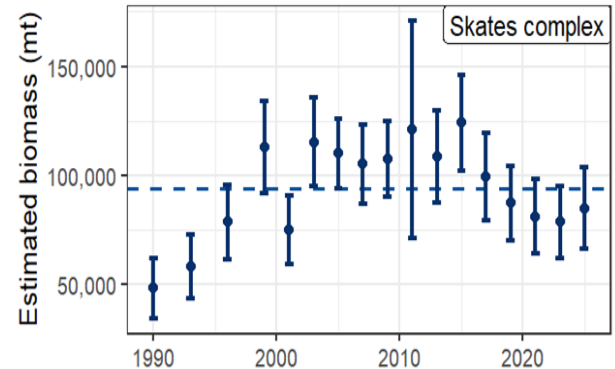
2025 Biomass: 33,804 t
2025 OFL: 3,380 t
2025, 2026 ABC: 2,536 t

2024 catch/ABC: 0.31
2025 catch/ABC: 0.51

Other skates

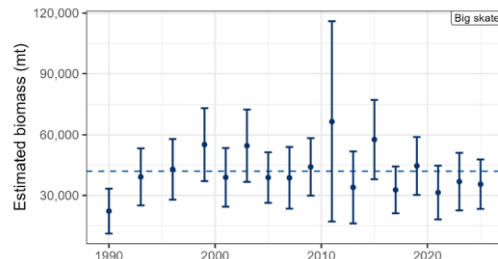
2025 Biomass: 8,869 t
2025 OFL: 887 t
2025, 2026 ABC: 665 t

2024 catch/ABC: 0.97
2025 catch/ABC: 0.78

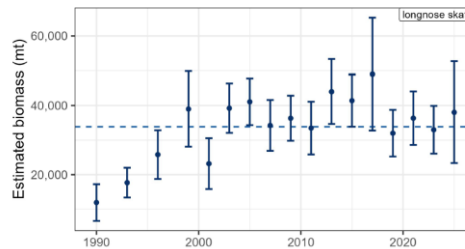


BTS Biomass estimate in 2025:
~85,000 mt → +8.0% from 2023 ↔

Big skate (*Beringraja binoculata*)



Longnose skate (*Raja rhina*)



Biomass estimate in 2025:

~36,000 mt → -3.6% from 2023 ↔

Includes:

longnose skate, big skate, Aleutian skate, Alaska skate, Bering skate, whiteblotched skate, mud skate, skate unid.*, deepsea skate*, roughtail skate*, commander skate*, butterfly skate*, whitebrow skate*



GOA Other rockfish (Tiers 4/5/6, biennial) last operational assessment 2024

Summary from 2024 SAFE:

2025/2026 OFL: 4,618 t

2025/2026 ABC: 3,504 t (+ 1t northern rockfish SEO)

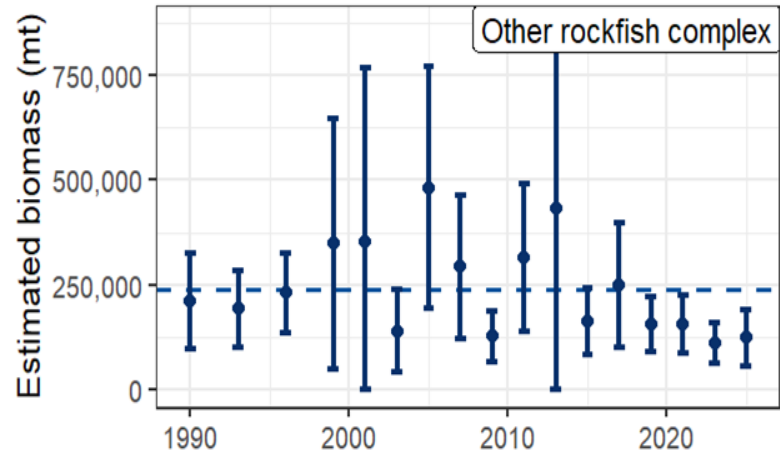
- No elevated risk table scores

Catch/ABC (2024, 2025): 0.15, 0.12

This complex includes:

silvergray rockfish, redstripe rockfish, sharpchin rockfish, northern rockfish, redbanded rockfish, greenstriped rockfish, harlequin rockfish, yellowtail rockfish, bocaccio, darkblotched rockfish, widow rockfish, yellowmouth rockfish, pygmy rockfish, stripetail rockfish*, aurora rockfish*, splitnose rockfish*, blackgill rockfish*, vermilion rockfish*

Bottom trawl survey

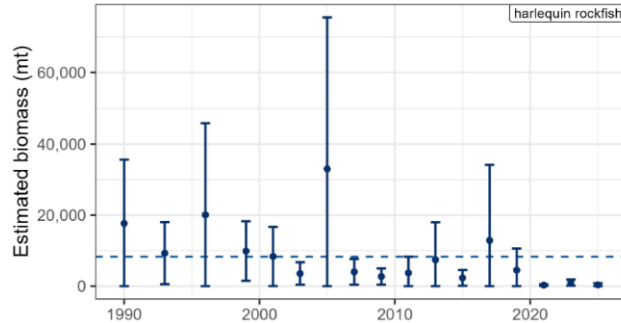


- Biomass estimate in 2025: ~123,000 mt
- +11.6% from 2023 ↑

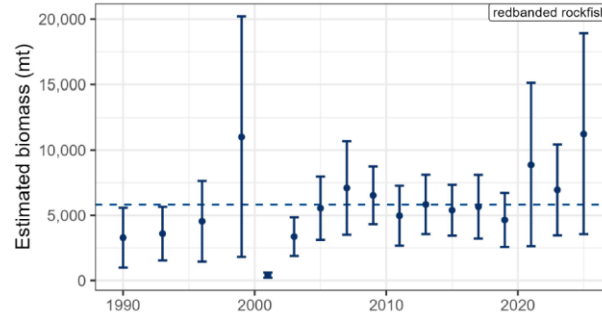


GOA Other rockfish: BTS biomass trends for some species components

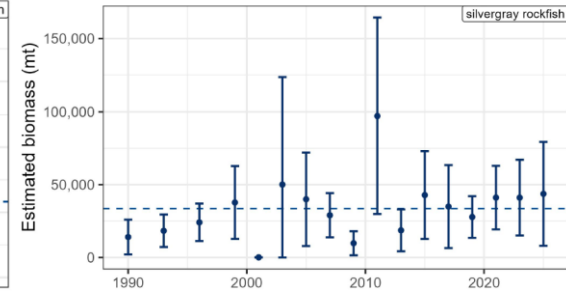
Harlequin rockfish (*Sebastes variegatus*)



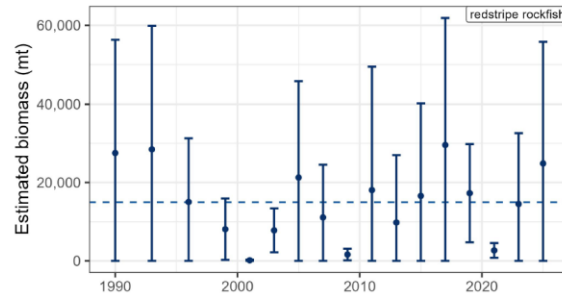
Redbanded rockfish (*Sebastes babcocki*)



Silvergray rockfish (*Sebastes brevispinis*)



Redstripe rockfish (*Sebastes proriger*)



Sharpchin rockfish (*Sebastes zacentrus*)

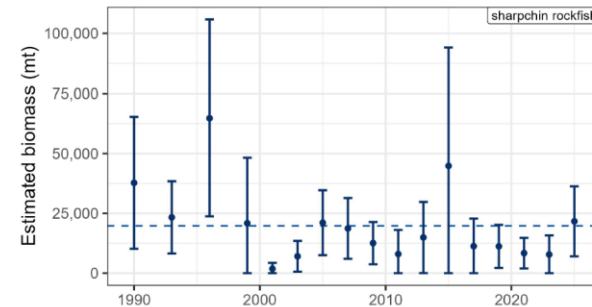


Table 1. Harvest Specifications for Groundfish in the Gulf of Alaska (metric tons) for 2026 and 2027
pre-meeting DRAFT, November 2025

Species	Area	2024			Catch through 12/31/2024	2025			Catch through 11/8/2025	2026*			2027*		
		OFL	ABC	TAC		OFL	ABC	TAC		OFL	ABC	TAC	OFL	ABC	TAC
Pollock	State GHL	n/a	4,769	n/a		n/a	4,526	n/a		n/a	3,326	n/a	n/a	3,326	n/a
	W (610)	n/a	38,882	38,882	31,585	n/a	37,344	37,344	14,029	n/a	27,453	27,453	n/a	27,453	27,453
	C (620)	n/a	90,937	90,937	71,727	n/a	82,265	82,265	79,477	n/a	60,477	60,477	n/a	60,477	60,477
	C (630)	n/a	50,587	50,587	20,717	n/a	51,605	51,605	39,046	n/a	37,936	37,936	n/a	37,936	37,936
	WYAK	n/a	5,565	5,565	1,382	n/a	5,282	5,282	1,861	n/a	3,883	3,883	n/a	3,883	3,883
	Subtotal	269,916	190,740	185,971	125,411	210,111	181,022	176,496	134,413	153,971	133,075	129,749	153,971	133,075	129,749
	SEO	12,998	9,749	9,749	-	12,998	9,749	9,749	2	12,998	9,749	9,749	12,998	9,749	9,749
Total		282,914	200,489	195,720	125,411	223,109	190,771	186,245	134,415	166,969	142,824	139,498	166,969	142,824	139,498
Pacific Cod	W	n/a	8,745	6,121	4,476	n/a	8,710	6,097	5,340	n/a	8,182	5,318	n/a	8,182	5,318
	C	n/a	20,590	15,442	15,189	n/a	20,506	15,379	13,844	n/a	19,263	14,447	n/a	19,263	14,447
	E	n/a	2,937	2,203	365	n/a	2,925	2,194	532	n/a	2,748	2,061	n/a	2,748	2,061
	Total	38,712	32,272	23,766	20,030	38,688	32,141	23,670	19,716	36,459	30,193	21,826	36,459	30,193	21,826
Sablefish	W	n/a	4,699	4,699	2,777	n/a	4,996	4,746	3,117	n/a	4,687	4,687	n/a	4,687	4,687
	C	n/a	9,651	9,651	7,267	n/a	10,257	9,744	7,319	n/a	9,622	9,622	n/a	9,622	9,622
	WYAK	n/a	2,926	2,926	2,370	n/a	3,125	2,686	2,160	n/a	2,652	2,652	n/a	2,652	2,652
	SEO	n/a	5,320	5,320	4,542	n/a	5,660	5,660	4,826	n/a	5,589	5,589	n/a	5,589	5,589
	GOA Total	n/a	n/a	22,596	16,956	n/a	n/a	22,836	17,422	n/a	n/a	22,550	n/a	n/a	22,550
	AK Total	55,084	47,146	n/a		58,532	47,605	n/a		57,797	47,008	n/a	57,797	47,008	n/a
Shallow-Water Flatfish	W	n/a	23,337	13,250	64	n/a	23,755	13,250	107	n/a	23,902	13,250	n/a	23,902	13,250
	C	n/a	27,783	27,783	2,830	n/a	28,279	28,279	2,025	n/a	28,455	28,455	n/a	28,455	28,455
	WYAK	n/a	2,778	2,778	1	n/a	2,828	2,828	25	n/a	2,846	2,846	n/a	2,846	2,846
	SEO	n/a	1,667	1,667	1	n/a	1,697	1,697	-	n/a	1,707	1,707	n/a	1,707	1,707
	Total	68,121	55,565	45,478	2,896	69,277	56,559	46,054	2,157	69,610	56,910	46,258	69,610	56,910	46,258
Deep-Water Flatfish	W	n/a	237	237	8	n/a	234	234	1	n/a	231	231	n/a	231	231
	C	n/a	2,655	2,655	78	n/a	2,616	2,616	76	n/a	2,568	2,568	n/a	2,568	2,568
	WYAK	n/a	1,856	1,856	3	n/a	1,828	1,828	6	n/a	1,795	1,795	n/a	1,795	1,795
	SEO	n/a	2,314	2,314	2	n/a	2,280	2,280	4	n/a	2,238	2,238	n/a	2,238	2,238
	Total	8,387	7,062	7,062	91	8,263	6,958	6,958	87	8,114	6,832	6,832	8,114	6,832	6,832
Rex Sole	W	n/a	3,367	3,367	23	n/a	3,382	3,382	12	n/a	3,353	3,353	n/a	3,353	3,353
	C	n/a	13,639	13,639	539	n/a	13,698	13,698	555	n/a	13,582	13,582	n/a	13,582	13,582
	WYAK	n/a	1,453	1,453	1	n/a	1,436	1,436	-	n/a	1,413	1,413	n/a	1,413	1,413
	SEO	n/a	2,905	2,905	-	n/a	2,871	2,871	-	n/a	2,825	2,825	n/a	2,825	2,825
	Total	25,978	21,364	21,364	563	26,002	21,387	21,387	567	25,743	21,173	21,173	25,743	21,173	21,173
Arrowtooth Flounder	W	n/a	30,409	14,500	490	n/a	33,593	14,500	260	n/a	33,716	14,500	n/a	33,716	14,500
	C	n/a	64,871	64,871	17,634	n/a	68,261	68,261	12,765	n/a	68,511	68,511	n/a	68,511	68,511
	WYAK	n/a	7,870	7,870	31	n/a	6,695	6,695	22	n/a	6,719	6,719	n/a	6,719	6,719
	SEO	n/a	16,099	6,900	27	n/a	10,998	10,998	28	n/a	11,039	11,039	n/a	11,039	11,039
	Total	142,485	119,249	94,141	18,182	142,832	119,547	100,454	18,182	143,347	119,985	100,769	143,347	119,985	100,769
Flathead Sole	W	n/a	13,273	8,650	145	n/a	13,592	8,650	64	n/a	13,757	8,650	n/a	13,757	8,650
	C	n/a	21,307	21,307	890	n/a	21,817	21,817	836	n/a	22,083	22,083	n/a	22,083	22,083
	WYAK	n/a	3,876	3,876	-	n/a	3,970	3,970	-	n/a	4,018	4,018	n/a	4,018	4,018
	SEO	n/a	2,047	2,047	-	n/a	2,097	2,097	-	n/a	2,122	2,122	n/a	2,122	2,122
Total		49,414	40,503	35,880	1,035	50,587	41,476	36,534	836	51,176	41,980	36,873	51,176	41,980	36,873
Pacific ocean perch	W	n/a	1,787	1,787	1,666	n/a	1,753	1,753	1,800	n/a	1,688	1,688	n/a	1,688	1,688
	C	n/a	28,757	28,757	21,792	n/a	28,209	28,209	23,870	n/a	27,156	27,156	n/a	27,156	27,156
	WYAK	n/a	2,110	2,110	1,946	n/a	2,070	2,070	1,892	n/a	1,993	1,993	n/a	1,993	1,993
	SEO	n/a	7,065	n/a	-	n/a	6,930	6,930	-	n/a	6,672	6,672	n/a	6,672	6,672
Total		47,466	39,719	39,719	25,404	46,562	38,962	38,962	27,562	44,826	37,509	37,509	44,826	37,509	37,509



GOA Groundfish Harvest Specifications- Preliminary 2026/2027 OFLs, ABCs, TACs based on proposed rule Table 1 (2 of 2)

Species	Area	2024			Catch through 12/31/2024	2025			Catch through 11/8/2025	2026*			2027*		
		OFL	ABC	TAC		OFL	ABC	TAC		OFL	ABC	TAC	OFL	ABC	TAC
Northern Rockfish	W	n/a	2,535	2,535	316	n/a	1,396	1,396	466	n/a	1,346	1,346	n/a	1,346	1,346
	C	n/a	2,280	2,280	822	n/a	3,680	3,680	1,213	n/a	3,549	3,549	n/a	3,549	3,549
	E	n/a	n/a	n/a	n/a	n/a	-	-	n/a	n/a	-	-	n/a	-	-
	Total	5,750	4,815	4,815	1,138	6,064	5,076	5,076	1,679	5,848	4,895	4,895	5,848	4,895	4,895
Shortraker Rockfish	W	n/a	34	34	16	n/a	34	34	3	n/a	34	34	n/a	34	34
	C	n/a	189	189	136	n/a	189	189	361	n/a	189	189	n/a	189	189
	E	n/a	424	424	195	n/a	424	424	136	n/a	424	424	n/a	424	424
	Total	863	647	647	347	863	647	647	500	863	647	647	863	647	647
Dusky Rockfish	W	n/a	145	145	72	n/a	209	209	68	n/a	199	199	n/a	199	199
	C	n/a	7,365	7,365	2,127	n/a	5,818	5,818	2,179	n/a	5,527	5,527	n/a	5,527	5,527
	WYAK	n/a	84	84	5	n/a	215	215	23	n/a	204	204	n/a	204	204
	SEO	n/a	30	30	-	n/a	96	96	-	n/a	91	91	n/a	91	91
	Total	9,281	7,624	7,624	2,204	7,705	6,338	6,338	2,270	7,319	6,021	6,021	7,319	6,021	6,021
Rougheye and Blackspotted Rockfish	W	n/a	197	197	53	n/a	224	224	55	n/a	229	229	n/a	229	229
	C	n/a	315	315	148	n/a	359	359	130	n/a	366	366	n/a	366	366
	E	n/a	525	525	102	n/a	597	597	69	n/a	608	608	n/a	608	608
	Total	1,555	1,037	1,037	303	1,576	1,180	1,180	254	1,631	1,203	1,203	1,631	1,203	1,203
Demersal shelf rockfish	W/C/WYAK	n/a	n/a	n/a	n/a	361	271	271	253	361	271	271	361	271	271
	SEO	376	283	283	188	524	394	394	266	524	394	394	524	394	394
Thornyhead Rockfish	W	n/a	314	314	37	n/a	206	206	18	n/a	206	206	n/a	206	206
	C	n/a	693	693	65	n/a	590	590	73	n/a	590	590	n/a	590	590
	E	n/a	621	621	65	n/a	542	542	36	n/a	542	542	n/a	542	542
	Total	2,170	1,628	1,628	167	1,784	1,338	1,338	127	1,784	1,338	1,338	1,784	1,338	1,338
Other Rockfish	W/C/WYAK	n/a	1,353	1,353	544	n/a	1,084	1,084	400	n/a	1,084	1,084	n/a	1,084	1,084
	SEO	n/a	2,421	300	32	n/a	2,421	300	21	n/a	2,421	300	n/a	2,421	300
	Total	4,977	3,774	1,653	576	4,618	3,505	1,384	421	4,618	3,505	1,384	4,618	3,505	1,384
Atka mackerel	Total	6,200	4,700	4,700	380	6,200	4,700	3,000	967	6,200	4,700	3,000	6,200	4,700	3,000
Big Skate	W	n/a	745	745	153	n/a	745	745	105	n/a	745	745	n/a	745	745
	C	n/a	1,749	1,749	827	n/a	1,749	1,749	1,724	n/a	1,749	1,749	n/a	1,749	1,749
	E	n/a	341	341	112	n/a	341	341	262	n/a	341	341	n/a	341	341
	Total	3,780	2,835	2,835	1,092	3,780	2,835	2,835	2,091	3,780	2,835	2,835	3,780	2,835	2,835
Longnose Skate	W	n/a	104	104	49	n/a	104	104	81	n/a	104	104	n/a	104	104
	C	n/a	1,894	1,894	503	n/a	1,894	1,894	684	n/a	1,894	1,894	n/a	1,894	1,894
	E	n/a	538	538	234	n/a	538	538	527	n/a	538	538	n/a	538	538
	Total	3,380	2,536	2,536	786	3,380	2,536	2,536	1,292	3,380	2,536	2,536	3,380	2,536	2,536
Other Skates	GOA-wide	887	665	665	645	887	665	665	520	887	665	665	887	665	665
Sharks	GOA-wide	6,521	4,891	4,891	1,495	6,521	4,891	4,891	1,536	6,521	4,891	4,891	6,521	4,891	4,891
Octopuses	GOA-wide	1,307	980	980	190	1,307	980	980	223	1,307	980	980	1,307	980	980
TOTAL		765,608	599,784	520,020	220,079	709,422	590,762	514,635	233,343	649,064	539,295	464,332	649,064	539,295	464,332

Notes: ABCs are at the level of the stock or stock complex and shown in "Total" or "GOA-wide" rows. Any quantities shown by area are spatial apportionments of ABC and do not reflect ACLs.

GOA catch (not AK wide catch) for sablefish included in catch totals. ABC for sablefish (AK wide) shown in ABC totals.

*2026-2027 OFLs and ABCs as recommended by the Council in October 2025 and specified in the 2025-2026 final harvest specifications published in March 2025.

Sources: 2024 and 2025 Final GOA Harvest Specifications (published March 2024), 2025 and 2026 Final GOA Harvest Specifications (published March 2025), 2026-2027 Proposed GOA Harvest Specifications (Council motion, October 2025), NMFS Catch Accounting System (CAS).

GOA Halibut Discard Mortality Rates (DMRs)

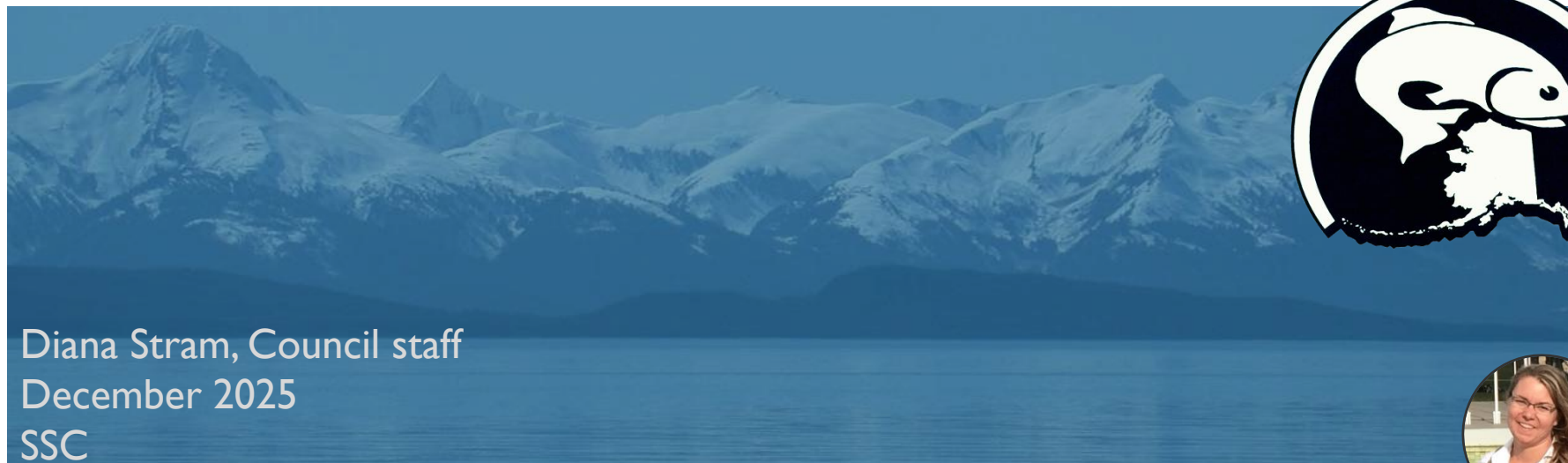
Area	Gear	Operation	2025 DMRs (specified)	2026/27 DMRs (recommended)
GOA	Pot	All	32% ^b	29% ^b
	Hook-and-line	CP	10%	12%
	Hook-and-line	CV	19% ^c	15% ^c
	Non-pelagic trawl	Mothership / CP	76%	79%
	Non-pelagic trawl	CV	74%	62%
	Non-pelagic trawl	CV-Rockfish Prog	56% ^b	53% ^b
All	Pelagic trawl	All	100%*	100%*

Thanks to Michael Fey (AKFIN) and other Halibut DMR Working Group members: Jen Cahalan (PSMFC), Jennifer Ferdinand (NMFS AFSC), Krista Melani (NMFS AKRO), Jason Gasper (NMFS AKRO), Ian Stewart (IPHC)



C5 Bering Sea Aleutian Islands Groundfish

Review of information available for planned BSAI assessment products for 2025 specifications cycle



Diana Stram, Council staff
December 2025
SSC



2025 planned BSAI Documentation Summary

Assessment	BSAI Stocks for 2025 (November)
Operational Full	EBS Pollock, Yellowfin Sole, Greenland Turbot, Northern Rockfish, BSAI Skates
Operational Update	Pacific cod (Eastern Bering Sea and Aleutian Islands (AI))
Harvest Projection (reviewed in Sept/Oct)	None this year
Catch Report	Pollock (AI), Pollock (Bogoslof), Arrowtooth flounder, Kamchatka flounder, Northern rock sole, Flathead sole, Alaska plaice, Other flatfish, Pacific ocean perch, Rougheye & blackspotted rockfish, Shortraker rockfish, Other rockfish, Atka mackerel, Sharks, Octopus

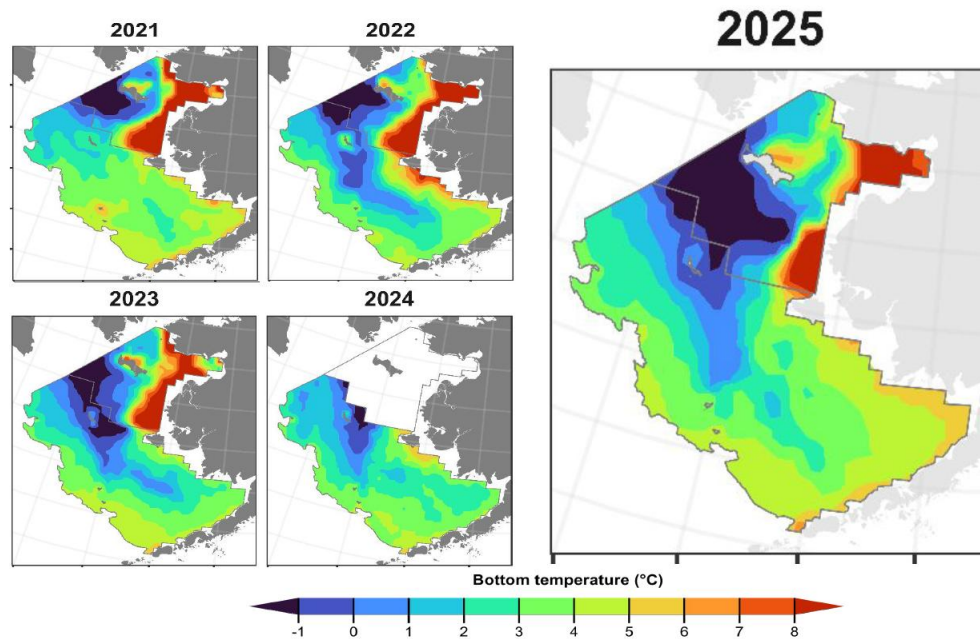
EBS trawl survey (note additional slides are posted to eAgenda from September Plan Team with updated EBS NBS slides)

● Highlights:

- Survey methods update and standard data collections
- Cold pool similar to 2022 in extent, but colder and below average
- Fish biomass generally down relative to 2022

● Discussion:

- NBS survey still being processed a time of Plan Team presentation (but appended to eAgenda version of survey presentation)



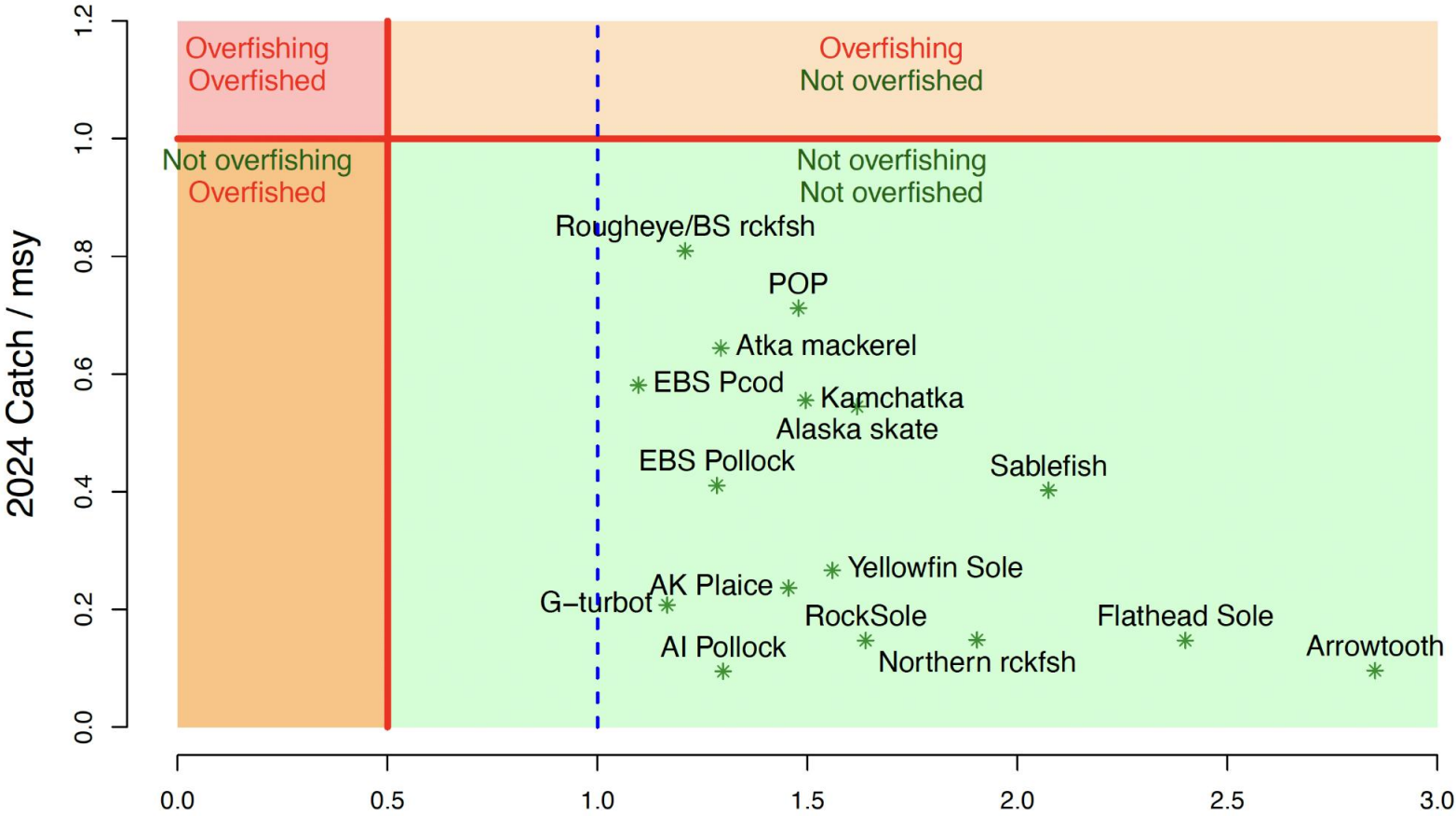
Eastern Bering Sea Trawl Survey

- EBS 350/350, NBS 137/144 stations sampled
- 124,170 lengths, 6,532 otoliths, 4,408 stomachs collected
- Water temps slightly warmer than 2024, cold pool area smaller, no CTD or O2 data
- Biomass similar to last year for most fish species, lots of small Pacific cod

Common name	Year	Biomass (mt)	Population (x1,000)
walleye pollock	2024	5,476,067	10,307,932
	2025	3,825,362 (-30%)	6,575,619 (-36%)
Pacific cod	2024	635,840	436,530
	2025	570,986 (-10%)	516,669 (18%)
yellowfin sole	2024	1,503,618	5,643,105
	2025	1,548,142 (3%)	5,772,913 (2%)
northern rock sole	2024	1,439,739	7,417,950
	2025	1,490,955 (4%)	7,807,291 (5%)
flathead sole	2024	723,996	2,311,092
	2025	714,106 (-1%)	2,278,779 (-1%)
Bering flounder	2024	10,370	48,918
	2025	12,315 (19%)	72,799 (49%)
Alaska plaice	2024	349,579	634,036
	2025	333,810 (-5%)	586,292 (-8%)
arrowtooth flounder	2024	582,469	926,415
	2025	491,918 (-16%)	669,870 (-28%)
Kamchatka flounder	2024	28,362	69,129
	2025	33,231 (17%)	73,058 (6%)
Pacific halibut	2024	125,145	65,136
	2025	133,705 (7%)	80,524 (24%)
Alaska skate	2024	407,133	102,931
	2025	399,887 (-2%)	113,374 (10%)
Pacific ocean perch	2024	50,664	71,612
	2025	11,741 (-77%)	12,420 (-83%)

Thanks to Duane Stevenson

Bering Sea and Aleutian Islands



Note does not include AI Pacific cod (B24%)

EBS Pollock: Tier 3a; annual assessment

Surveys used in assessment:

EBS

NBS

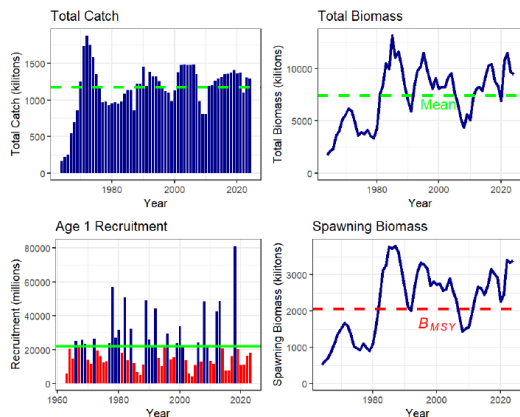
Acoustic trawl

AVO



Summary information from 2024 assessment

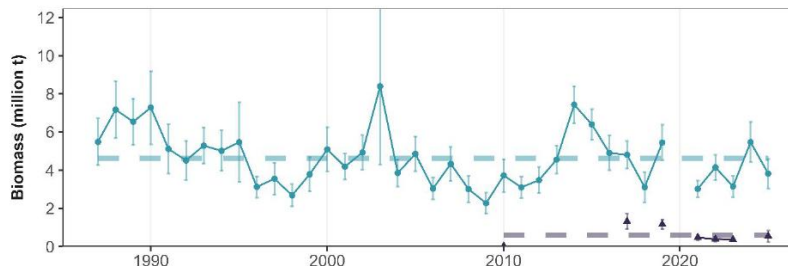
Stock is above B_{MSY}



2025 ABC = 2,417,000 t

2026 ABC = 2,036,000 t

New information available



EBS Biomass

Mean: 4.6 M

2025: 3.8 M (-30% from 2024)

NBS Biomass

Mean: 600 K

2025: 548 K (+51% from 2023)

EBS Survey Biomass (mt):

2024: 5,476,067

2025: 3,825,362 (-30%)

EBS Survey population #s (x1000)

2024: 10,307,932

2025: 6,575,619 (-36%)

Catch/ABC:

2024: 0.57

2025 (11/8/25): 0.55

No elevated risk table scores



Basis for 2025-2026 catch projection: rounded estimated catch (1.3 mill t)

EBS Pacific cod: Tier 3b; annual assessment

Surveys used in assessment:
EBS
NBS



Summary information from 2024 assessment

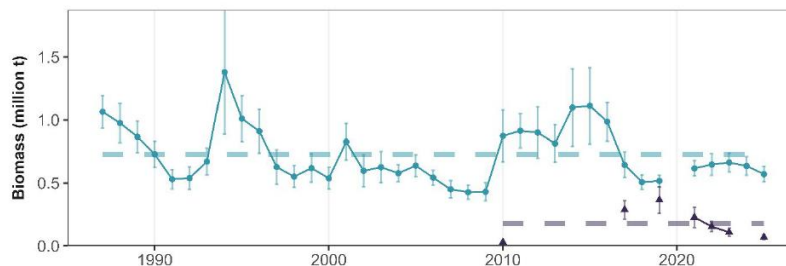
Stock is at $B_{38\%}$



2025 ABC = 153,617
2026 ABC = 141,520

ESP updated in 2024

New information and risk table summary



EBS Survey Biomass (mt)
2024: 635,840
2025: 570,986 (-10%)

Catch/ABC:
2024: 0.85 (.85 with state fishery)
2025 (11/8/25): 0.72 (0.85 w/state)

Basis for 2025-2026 catch projection:

Projections are based on assumed catches of 165,659 t
(5yr ave) in 2024, and 153,617 t (full ABC) in 2025

EBS Survey population #s (x1000)
2024: 436,530
2025: 516,669 (+18%)

Risk Table scores:
Level 2 for Ecosystem concerns;
no reduction from maxABC

EBS Biomass
Mean: 700 K
2025: 571 K (-10% from 2024)

NBS Biomass
Mean: 200 K
2025: 69 K (-36% from 2023)

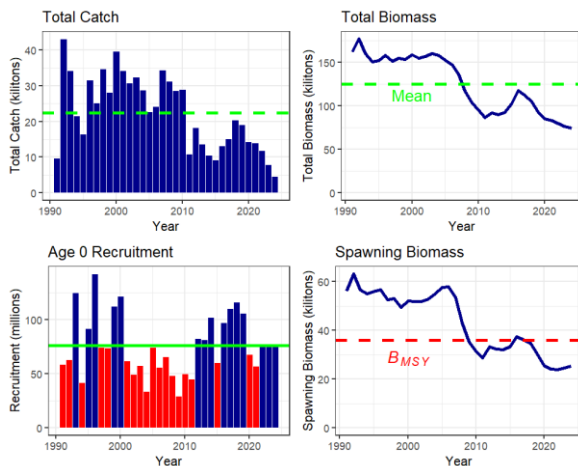
AI cod: Tier 3b; annual assessment

Surveys used in
assessment:
AI bottom trawl survey
(2024)



Summary information from 2024 assessment

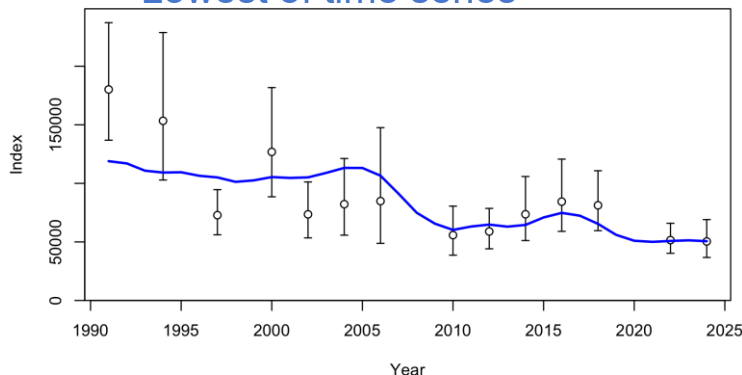
Stock is at $B_{24\%}$



2025 ABC = 13,376 t
2026 ABC = 12,973 t

2024 AI bottom trawl survey (no AI survey 2025)

- Continued decline from 2022 (-2%)
- Lowest of time series



Basis for 2025-2026 catch projection:
5 year average (extrapolated) for 2024
catch and full ABC for 2025 catch

**New information and
risk table summary**

Risk table scores:
level 2 pop dynamics;
level 2 ecosystem

Catch/ABC:
2024: 0.34
2025 (11/8/25): 0.34
(0.35 with state catch)



BSAI Yellowfin sole: Tier 1a; annual assessment

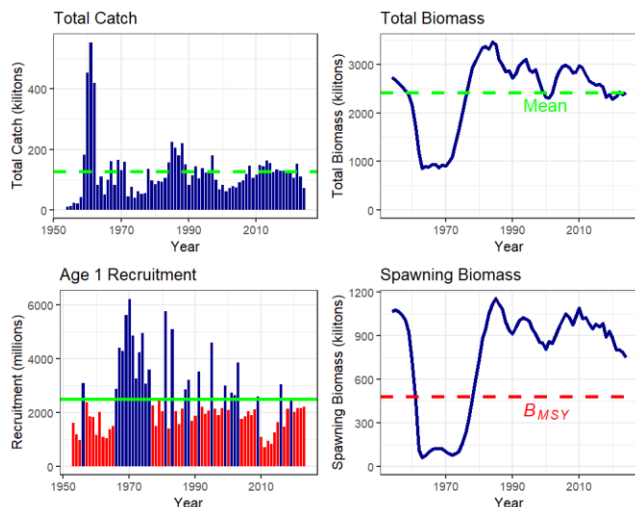
Surveys used in
assessment:

EBS
NBS

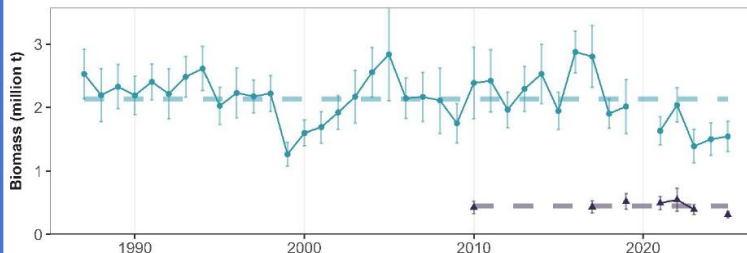


Summary information from 2024 assessment

Stock is above B_{MSY}



2025 ABC = 262,557 t
2026 ABC = 267,639 t



EBS Survey Biomass (mt):

2024: 1,503,618

2025: 1,548,142 (+3%)

Catch/ABC:

2024: 0.34

2025 (11/8/25): 0.31

EBS Survey population #s (x1000)

2024: 5,643,105

2025: 5,772,913 (+2%)

Risk table scores:

No elevated scores

EBS Biomass
Mean: 2.1 M
2025: 1.5 M (+3% from 2024)

NBS Biomass
Mean: 400 K
2025: 312 K (-21% from 2023)

Basis for 2025-2026 catch projection:

Mean catch 2020-2024 using an extrapolated catch of 74,288
for 2024 and 116,803 for 2025 instead of maxABC

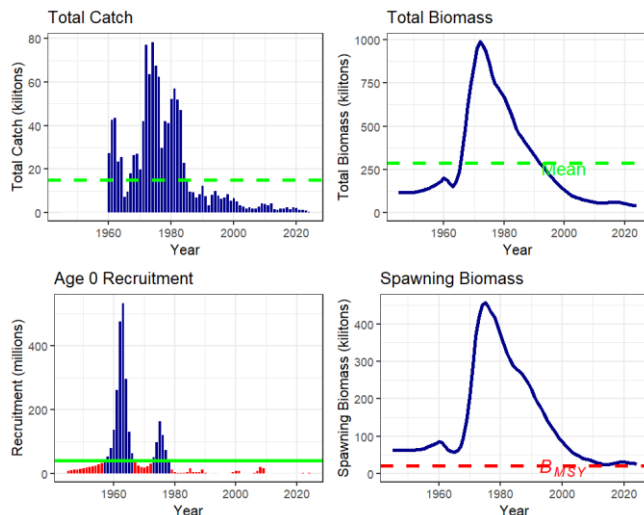


BSAI Greenland turbot: Tier 3a; biennial assessment

Surveys used in assessment:
EBS
AFSC Longline

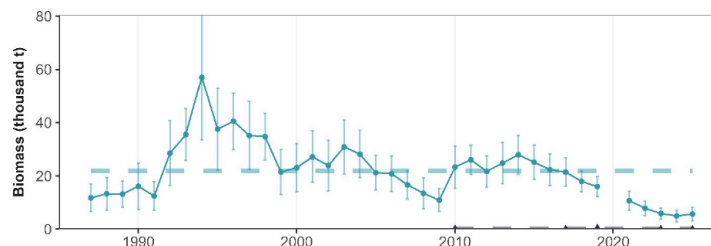
Summary information from 2024 assessment

Stock is above B_{MSY}



2025 ABC = 1,678 t
2026 ABC = 1,328 t

New information and risk table summary



EBS Biomass
Mean: 22 K
2025: 6 K (+14% from 2024)

NBS Biomass
Mean: 0.1 K
2025: ~0 (-76% from 2023)

Catch/ABC:

2024: 0.24

2025 (11/8/25): 0.37

Basis for 2025-2026 catch projection:

preliminary catches of 1,143 t was used in place of maximum permissible ABC for 2025 and 2026 to provide OFL and maximum ABC estimates 2025 and 2026 catch estimated as the product of the average proportion of the TAC captured over the previous 5 years (2019-2023), 36%, and the 2024 TAC, 3,188 t.

Risk Table scores

Level 3 for Assessment concerns (esp. retrospective patterns, lack of model fit to decline);
Level 2 population dynamics due to uncertainty in future recruitment;
Level 2 for fishery performance



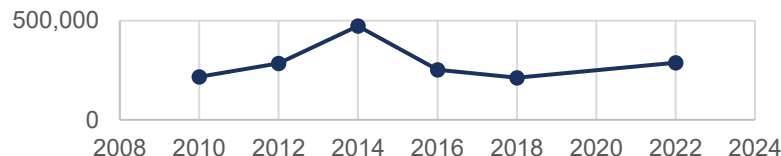
25% reduction from maxABC 45

BSAI Northern rockfish: Tier 3a; biennial assessment (last update assessed 2023, HP 2024)

Additional surveys used in
assessment:
AI bottom trawl survey (primary)
EBS

Summary information from 2023 assessment

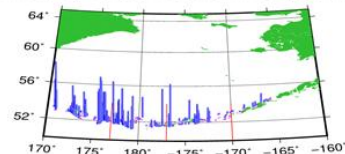
Aleutian Islands Bottom Trawl Survey
Biomass (t) Total biomass over all
areas



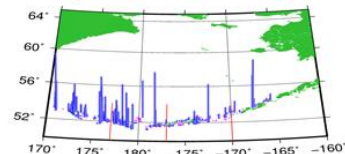
AI survey biomass (t) with CV by area

Year	WAI	CAI	EAI	SBS	Total
2010	143,953 (0.29)	51,331 (0.40)	21,846 (0.50)	189 (0.52)	217,319 (0.22)
2012	216,325 (0.65)	52,674 (0.40)	15,615 (0.60)	550 (0.73)	285,164 (0.50)
2014	346,392 (0.38)	48,049 (0.44)	76,787 (0.79)	1,668 (0.80)	472,895 (0.31)
2016	124,310 (0.21)	78,869 (0.37)	48,382 (0.52)	1,656 (0.55)	253,217 (0.18)
2018	98,756 (0.24)	59,500 (0.40)	20,096 (0.63)	34,120 (0.70)	212,472 (0.20)
2022	122,692 (0.24)	32,212 (0.46)	73,987 (0.47)	58,425 (0.76)	287,315 (0.23)

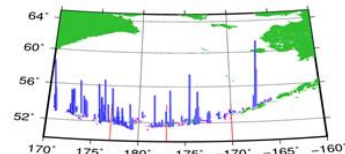
2016 AI Survey Northern Rockfish CPUE (scaled wgt/km²)



2018 AI Survey Northern Rockfish CPUE (scaled wgt/km²)



2022 AI Survey Northern Rockfish CPUE (scaled wgt/km²)

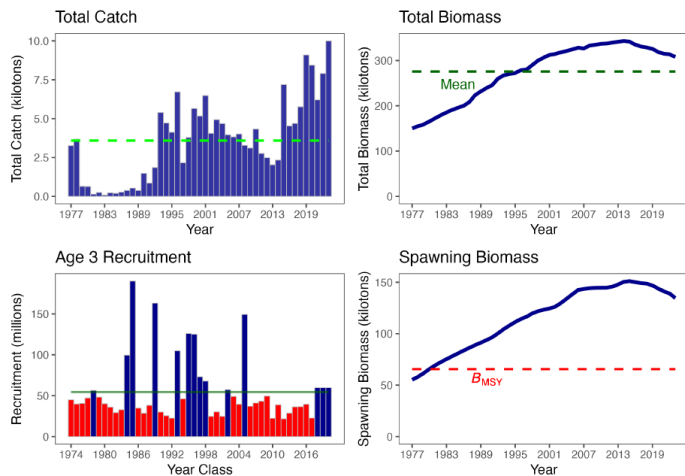


BSAI Northern rockfish: Tier 3a; biennial assessment (last update assessed 2023, HP 2024)

Additional surveys used in
assessment:
AI bottom trawl survey (primary)
EBS

Summary information from 2023 assessment

Stock is above B_{MSY}



2025 ABC = 18,694 t

2026 ABC = 18,232 t

New information and risk table summary

Catch/ABC:
2024: 0.46
2025 (11/8/25): 0.43

Risk table scores:
Level 2 population dynamics;
Level 2 assessment

Basis for 2025-2026 catch projection:

Projections are based on estimated catches of 7,706 t and 7,514 t used in place of maximum permissible ABC for 2025 and 2026



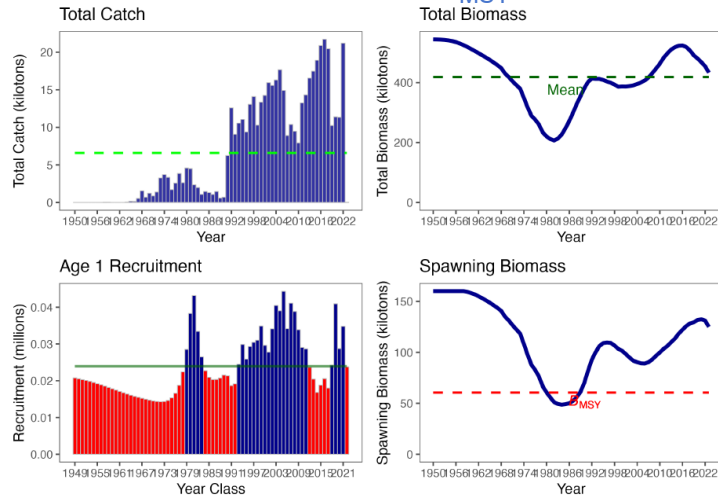
BSAI Skates: Tier 3a (Alaska Skate) /5 (other Skates); biennial assessment (last assessed 2023, HP 2024)

Surveys used in
assessment:
EBS
AI



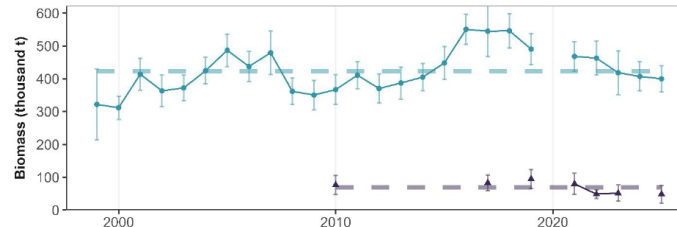
Summary information from 2023 assessment

Stock is above B_{MSY}



2025 ABC = 36,523 t
2026 ABC = 35,833 t

Alaska Skate



EBS Biomass
Mean: 423 K
2025: 400 K (-2% from 2024)

NBS Biomass
Mean: 69 K Not used in assessment
2025: 49 K (-6% from 2023)

EBS survey Biomass (mt):
2024: 407,133
2025: 399,887 (-2%)

EBS survey population #s (x1000)
2024: 102,931
2025: 113,374 (+10%)

Catch/ABC:
2024: 0.72
2025 (11/8/25): 0.53

Risk table scores:
Level 2 assessment

Basis for 2025-2026 catch projection:
projected and extrapolated total catch based on most recent 5 years



BSAI Skates: model convergence issues and trends

RESULTS

Model		Outcome
I4_2d	2023 accepted	Not Converged
I4_2dI	Updated version	Not Converged
25_0	Fixed growth	Not Converged
25_1	25_0 + catchability = 0.836	Not Converged
25_2	25_1 + selectivity	Converged
25_3	25_2 + catchability = 1	Converged

Author Recommends 25_2

- Converges
- Data informed catchability

BSAI SKATES

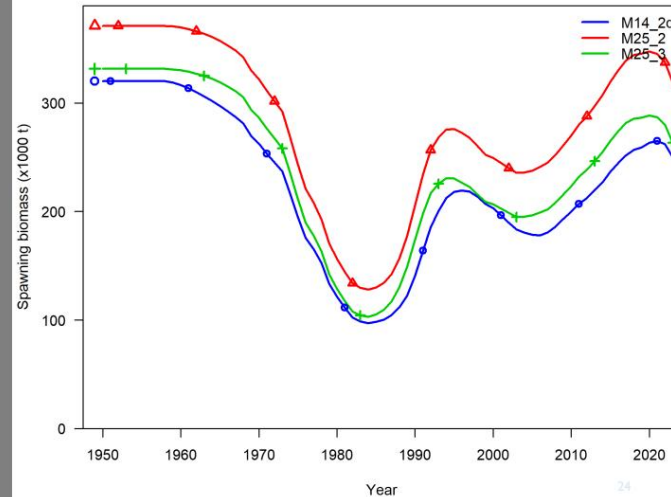


Table 1. Harvest specifications for BSAI Groundfish for 2026 and 2027

pre-meeting DRAFT, November 2025

Species	Area	2024			Catch through 12/31/24	2025			Catch through 11/8/25	2026			2027		
		OFL	ABC	TAC		OFL	ABC	TAC		OFL	ABC	TAC	OFL	ABC	TAC
Pollock	BS	3,162,000	2,313,000	1,313,580	1,311,261	2,957,000	2,417,000	1,389,000	1,324,556	2,496,000	2,036,000	1,375,000	2,496,000	2,036,000	1,375,000
	AI	51,516	42,654	5,420	4,999	55,728	46,051	5,000	4,527	56,231	46,437	19,000	56,231	46,437	19,000
	Bogoslof	115,146	86,360	250	23	77,354	58,015	250	63	77,354	58,015	250	77,354	58,015	250
Pacific cod	BS	200,995	167,952	147,753	142,783	183,509	153,617	133,602	111,227	169,243	141,520	123,077	169,243	141,520	123,077
	AI	18,416	12,431	8,080	4,169	16,782	13,376	8,694	4,608	16,273	12,973	8,433	16,273	12,973	8,433
	BSAI/GOA	55,084	47,146	n/a	6,333	58,532	47,605	n/a	4,672	57,797	47,008	n/a	57,797	47,008	n/a
Sablefish	BS	n/a	11,450	7,996	4,591	n/a	13,203	8,496	3,751	n/a	13,037	8,996	n/a	13,037	8,996
	AI	n/a	13,100	8,440	1,742	n/a	11,566	7,940	921	n/a	11,421	7,440	n/a	11,421	7,440
Yellowfin sole	BSAI	305,298	265,913	195,000	91,192	299,247	262,557	135,000	80,971	305,039	267,639	145,000	305,039	267,639	145,000
Greenland turbot	BSAI	3,705	3,188	3,188	768	2,598	1,678	1,678	618	2,059	1,328	1,328	2,059	1,328	1,328
	BS	n/a	2,687	2,687	462	n/a	1,415	1,415	406	n/a	1,120	1,120	n/a	1,120	1,120
	AI	n/a	501	501	305	n/a	263	263	212	n/a	208	208	n/a	208	208
Arrowtooth flounder	BSAI	103,280	87,690	14,000	10,660	104,428	88,683	14,000	9,024	102,472	87,035	14,000	102,472	87,035	14,000
Kamchatka flounder	BSAI	8,850	7,498	7,498	5,157	8,019	6,800	6,800	5,038	7,790	6,606	6,606	7,790	6,606	6,606
Northern rock sole	BSAI	197,828	122,091	66,000	29,855	165,444	157,487	75,000	39,947	166,220	158,225	75,000	166,220	158,225	75,000
Flathead sole	BSAI	81,605	67,289	35,500	13,176	101,621	83,807	36,000	8,432	106,283	87,700	36,000	106,283	87,700	36,000
Alaska plaice	BSAI	42,695	35,494	21,752	10,399	34,576	28,745	15,903	6,947	33,965	28,230	16,200	33,965	28,230	16,200
Other flatfish	BSAI	22,919	17,189	4,500	3,197	26,083	19,562	4,500	5,353	26,083	19,562	4,500	26,083	19,562	4,500
Pacific Ocean perch	BSAI	49,010	41,096	37,626	37,096	44,594	37,375	33,458	31,652	43,084	36,578	33,490	43,084	36,578	33,490
	BS	n/a	11,636	11,636	11,746	n/a	10,121	10,121	9,483	n/a	9,305	9,305	n/a	9,305	9,305
	EAI	n/a	7,969	7,969	7,792	n/a	6,278	6,278	6,003	n/a	6,144	6,144	n/a	6,144	6,144
	CAI	n/a	5,521	5,521	5,250	n/a	5,559	5,559	4,803	n/a	5,441	5,441	n/a	5,441	5,441
	WAI	n/a	15,970	12,500	12,308	n/a	15,417	11,500	11,363	n/a	15,088	12,000	n/a	15,088	12,000
Northern rockfish	BSAI	23,556	19,274	16,752	8,809	22,848	18,694	12,000	8,014	22,284	18,232	12,000	22,284	18,232	12,000
Blackspotted/Roug eye Rockfish	BSAI	761	569	569	639	838	706	706	642	902	766	766	902	766	766
	BS/EAI	n/a	388	388	201	n/a	408	408	224	n/a	441	441	n/a	441	441
	CAI/WAI	n/a	181	181	439	n/a	298	298	418	n/a	325	325	n/a	325	325
Shortraker rockfish	BSAI	706	530	530	177	631	473	473	301	631	473	473	631	473	473
Other rockfish	BSAI	1,680	1,260	1,260	1,361	1,406	1,054	1,054	1,026	1,406	1,054	1,054	1,406	1,054	1,054
	BS	n/a	880	880	788	n/a	639	639	504	n/a	639	639	n/a	639	639
	AI	n/a	380	380	573	n/a	415	415	522	n/a	415	415	n/a	415	415
Atka mackerel	C	111,684	95,358	72,987	72,173	122,622	103,247	82,000	80,440	107,889	92,361	82,941	107,889	92,361	82,941
	BS/EAI	n/a	41,723	32,260	31,765	n/a	46,850	39,000	37,871	n/a	41,731	41,731	n/a	41,731	41,731
	CAI	n/a	16,754	16,754	16,654	n/a	26,511	24,443	24,121	n/a	23,716	23,716	n/a	23,716	23,716
	WAI	n/a	36,882	23,973	23,754	n/a	30,087	18,557	18,448	n/a	26,914	17,494	n/a	26,914	17,494
	BSAI	45,574	37,808	30,519	27,146	44,086	36,523	27,646	19,503	43,285	35,833	27,646	43,285	35,833	27,646
Sharks	BSAI	689	450	400	174	689	450	400	197	689	450	400	689	450	400
Otopuspes	BSAI	6,080	4,560	400	246	6,080	4,560	400	296	6,080	4,560	400	6,080	4,560	400
Total	BSAI	4,609,077	3,476,801	2,000,000	1,781,793	4,334,715	3,588,066	2,000,000	1,748,054	3,849,059	3,188,585	2,000,000	3,849,059	3,188,585	2,000,000

Sources: Sources: 2024 and 2025 Final BSAI Harvest Specifications (published March 2024); 2025 and 2026 Final BSAI Harvest Specifications (published March 2025); 2026-2027 Proposed BSAI Harvest Specifications (Council recommendations, October 2025); Catch Accounting System.

Note: BSAI catch (not AK wide catch) for sablefish included in total. ABCs are at the level of the stock or stock complex and shown in "Total" rows. Any quantities shown in "Area" rows are spatial apportionments of ABC and do not reflect ACLs. 2026 and 2027 quantities based on 2025-2026 Proposed BSAI Harvest Specifications (October 2025); 2024 and 2025 OFLs, ABCs, and TACs are from harvest specifications adopted by the Council in December 2023 and 2024, respectively. Catch data are from the Catch Accounting System accessed 11/13/2025. * TACs for AI pollock BS pollock, yellowfin sole, northern rock sole and flathead sole differ from the Council December 2024 motion to reflect inseason reallocation of pollock and flatfish exchanges. On June 27 the TAC for "other flatfish" was raised from 4,500 mt to 5,225 mt through a release of non-specified reserves.



BSAI Halibut Discard Mortality Rates (DMRs)

Area	Gear	Operation	2025 DMRs (specified)	2026/27 DMRs (recommended)
BSAI	Pot	All	21% ^b	19% ^b
	Hook-and-line	CP	9%	10%
	Hook-and-line	CV	9% ^a	10% ^a
	Non-pelagic trawl	Mothership / CP	86%	86%
	Non-pelagic trawl	CV	67%	62%

Thanks to Michael Fey (AKFIN) and other Halibut DMR Working Group members: Jen Cahalan (PSMFC), Jennifer Ferdinand (NMFS AFSC), Krista Melani (NMFS AKRO), Jason Gasper (NMFS AKRO), Ian Stewart (IPHC)

