

# Bering Sea Pollock Industry Report on Dynamic Closure Measures for 2026 A Season

NPFMC MEETING – JUNE 2026

---

SUSIE ZAGORSKI - AFA CV IC MANAGER  
AND INSHORE IPA REPRESENTATIVE

AUSTIN ESTABROOKS – CP IPA  
REPRESENTATIVE

JAMES MIZE – MOTHERSHIP IPA  
REPRESENTATIVE

# Council's Request from December 2025

---

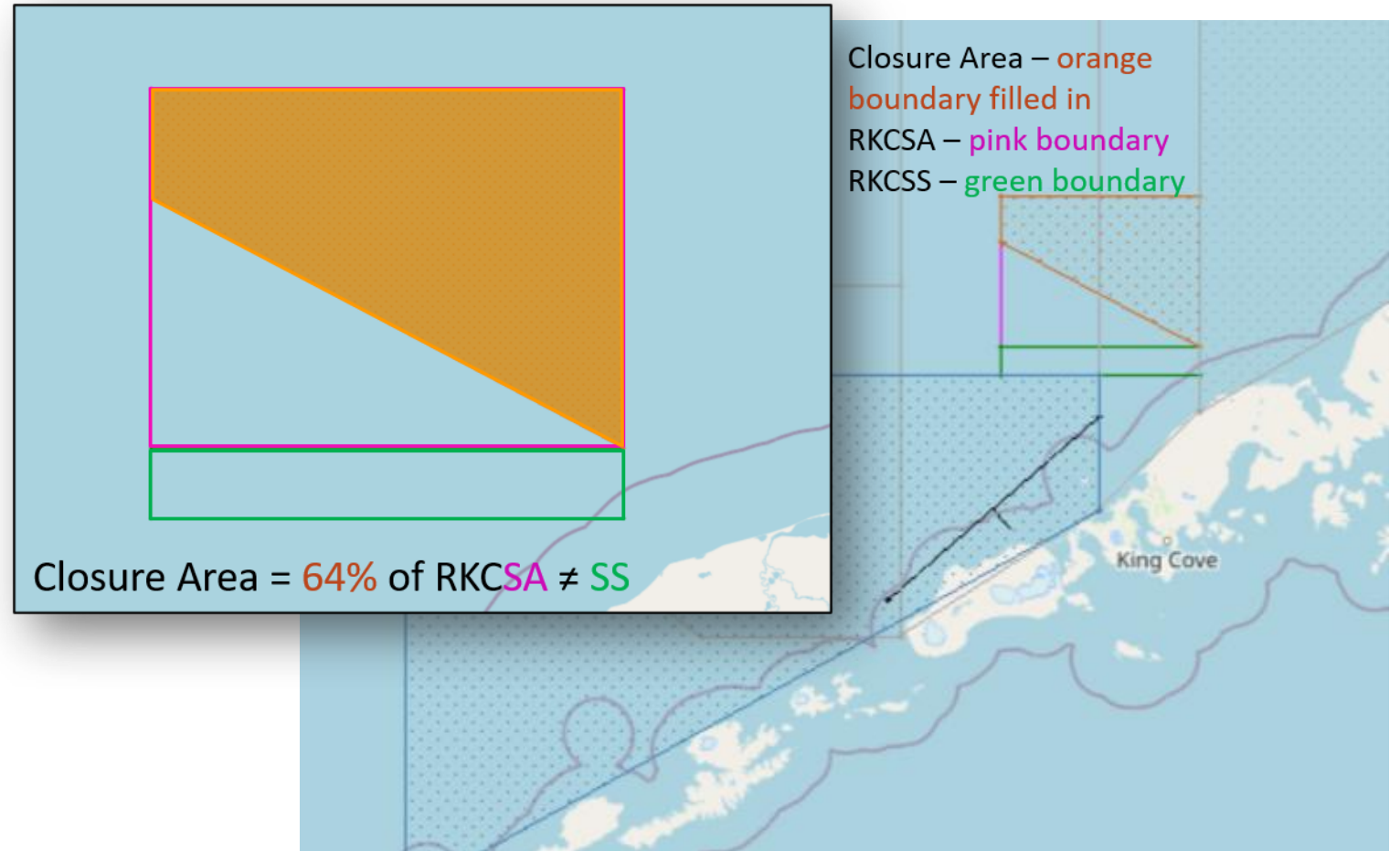
## *E1 - Dynamic Closure Report to Council*

*The Council requests Bering Sea pollock IPA representatives to report back on the voluntary dynamic spatial measures effective for the 2026 pollock A season. The Council requests the report back at the June 2026 meeting under the D1 Agenda Item.*

*The June 2026 dynamic spatial measures report back should include the following:*

- Weeks (either week # or week ending date) the dynamic closure area was open and closed and overall time the area was open vs. closed during the A season*
- Bristol Bay Red King Crab bycatch inside and outside the RKCSA*
- Salmon bycatch rates inside and outside RKCSA in relation to the dynamic closure area trigger*
- Description of salmon avoidance efforts inside and outside the RKCSA to illustrate use of the rate-based dynamic closure area trigger and the fleet's reliance on the RKCSA to avoid salmon*
- Vessel activities inside the RKCSA when the dynamic closure area was open and closed and methods used to monitor vessel activities*

# Catcher Vessel Fleets: Dynamic Spatial Closure A Season 2026



Inshore and Mothership CV fleets Dynamic Closure

# CV Fleet Dynamic Closure

## Rules

- Jan 20-30 Open
- Jan 31 Closed

### **Opens IF:**

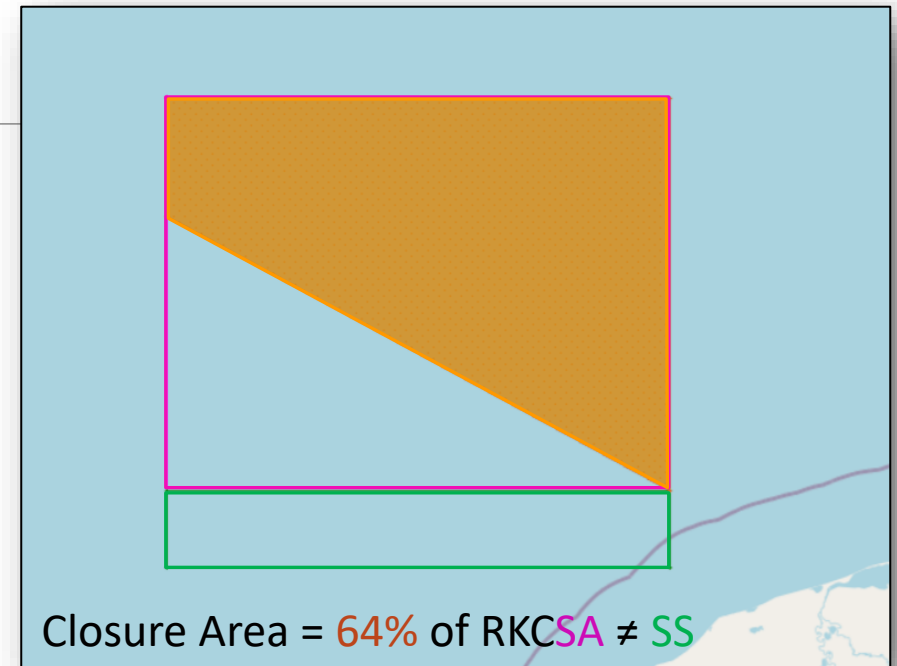
- Chinook rolling hotspot triggered outside of RKCSA
- *AND* if cleaner Chinook rates in the RKCSA during active fishing

### **Closes IF:**

- *No rolling hotspots triggered*
- *AND* No fishing in the RKCSA or cleaner Chinook rate outside the RKCSA

### **Notification and Monitoring:**

- Notified through Weekly IPA Report to Fleet
- Monitored on weekly basis from start of A season



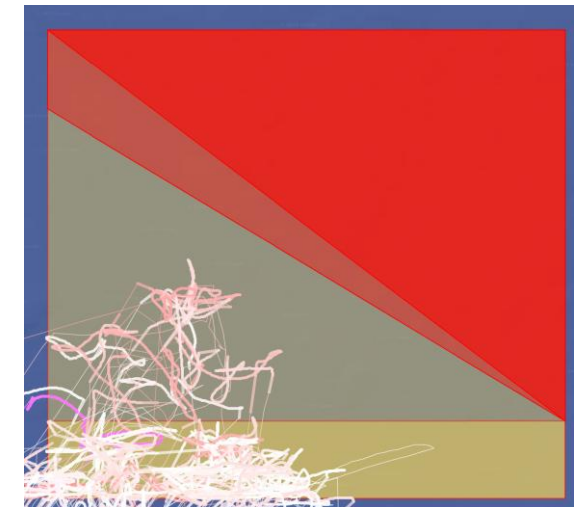
Closure Area – orange  
boundary filled in  
RKCSA – pink boundary  
RKCSS – green boundary

# Inshore CVs

## Dynamic Closure Report for 2026 A season

Week		Dynamic area open or closed	Reason for Open Status	Chinook Rates Inside RKCSA/SS	Chinook Rates Outside RKCSA	RKC inside RKCSA/SS	RKC outside RKCSA
Starting date (Friday)	Ending date (Friday)						
1/20/26	1/23/26	Open	Open Start		0.048		0
1/23/26	1/30/26	Open	Open Start		0.013		0
1/30/26	2/6/26	Open	Chinook RHS Closure	0.007	0.003	0	0
2/6/26	2/13/26	Closed		0.009	0.013	20	5
2/13/26	2/20/26	Open	Chinook Rates higher outside (based on previous week)	0.005	0.006	0	0
2/20/26	2/27/26	Open	Chinook Rates higher outside (based on previous week)	0.005	0.004	4	2
2/27/26	3/6/26	Closed		0.005	0.004	1	0
3/6/26	3/13/26	Closed			0.005		0
3/13/26	3/20/26	Closed			0.007		0
3/20/26	3/27/26	Open	Chinook RHS Closure		0.027		0
3/27/26	4/3/26	Open	Chinook RHS Closure		0.020		0
4/3/26	4/10/26	Closed			0.012		0
4/10/26	4/17/26	Closed			0.005		0
4/17/26	4/24/26	Closed			0.005		0
<i>Blue text indicates weeks of ice extent at or beyond the RKCSA</i>						25	7

- 7 weeks open and 7 weeks closed to inshore CVs, non-consecutively
  - No CVs fished inside the closure area while open**



- 25 RKC bycatch inside the RKCSA/SS and 7 RKC bycatch outside the RKCSA

# Inshore CVs Dynamic Closure Report for 2026 A season

Week		Dynamic area open or closed	Reason for Open Status	Chinook Rates Inside RKCSA/SS	Chinook Rates Outside RKCSA	RKC inside RKCSA/SS	RKC outside RKCSA
Starting date (Friday)	Ending date (Friday)						
1/20/26	1/23/26	Open	Open Start		0.048		0
1/23/26	1/30/26	Open	Open Start		0.013		0
1/30/26	2/6/26	Open	Chinook RHS Closure	0.007	0.003	0	0
2/6/26	2/13/26	Closed		0.009	0.013	20	5
2/13/26	2/20/26	Open	Chinook Rates higher outside (based on previous week)	0.005	0.006	0	0
2/20/26	2/27/26	Open	Chinook Rates higher outside (based on previous week)	0.005	0.004	4	2
2/27/26	3/6/26	Closed		0.005	0.004	1	0
3/6/26	3/13/26	Closed			0.005		0
3/13/26	3/20/26	Closed			0.007		0
3/20/26	3/27/26	Open	Chinook RHS Closure		0.027		0
3/27/26	4/3/26	Open	Chinook RHS Closure		0.020		0
4/3/26	4/10/26	Closed			0.012		0
4/10/26	4/17/26	Closed			0.005		0
4/17/26	4/24/26	Closed			0.005		0
						25	7

## 5 weeks had inshore A season activity inside the RKCSA or SS.

- 10% of the inshore sector's A season harvest was caught inside the RKCSA or SS.
- First week, there were Chinook RHS closures outside of the RKCSA.
- Second and third of those five weeks the inshore sector's Chinook rate inside was less than the Chinook rate outside.
- Last two of those five weeks, the Chinook rates were similar and low, indicating that Chinook rates were cleaning up outside of the RKCSA therefore the fleet had started moving back south and west.

## AIS, VMS, and catch accounting data were all used to monitor vessels and fishing activity. (all similar to salmon avoidance management and monitoring)

- Weekly IPA report used to inform fleet of closure status

Blue text indicates weeks of ice extent at or beyond the RKCSA

# Mothership CVs

## Dynamic Closure Report for 2026 A season

Week		Dynamic Area Open or Closed	Reason for Open Status	Chinook Rates Inside RKCSA	Chinook Rates Outside RKCSA	RKC Inside RKCSA	RKC Outside RKCSA
Starting Date (Friday)	Ending Date (Friday)						
1/20/2026	1/23/2026	Open	Open Start		0.0287		0
1/23/2026	1/30/2026	Open	Open Start		0.0137		0
1/30/2026	2/6/2026	Open	Chinook RHS Closure	0.0019	0.0078	0	0
2/6/2026	2/13/2026	Open	Chinook Rate Higher Outside Prior Week		0.0031		0
2/13/2026	2/20/2026	Open	Chinook RHS Closure	0.0052	0.0259	0	0
2/20/2026	2/27/2026	Closed		0.0061	0.0031	0	0
2/27/2026	3/6/2026	Closed			0.0083		0
3/6/2026	3/13/2026	Closed			0.0248		0
3/13/2026	3/20/2026	Closed			0.0312		0
3/20/2026	3/27/2026	Open	Chinook RHS Closure		0.0363		0
3/27/2026	4/3/2026	Open	Chinook RHS Closure		0.0080		0
4/3/2026	4/10/2026	Closed			0.0020		0
4/10/2026	4/17/2026	Closed					

### Three weeks had mothership A season activity inside the RKCSA.

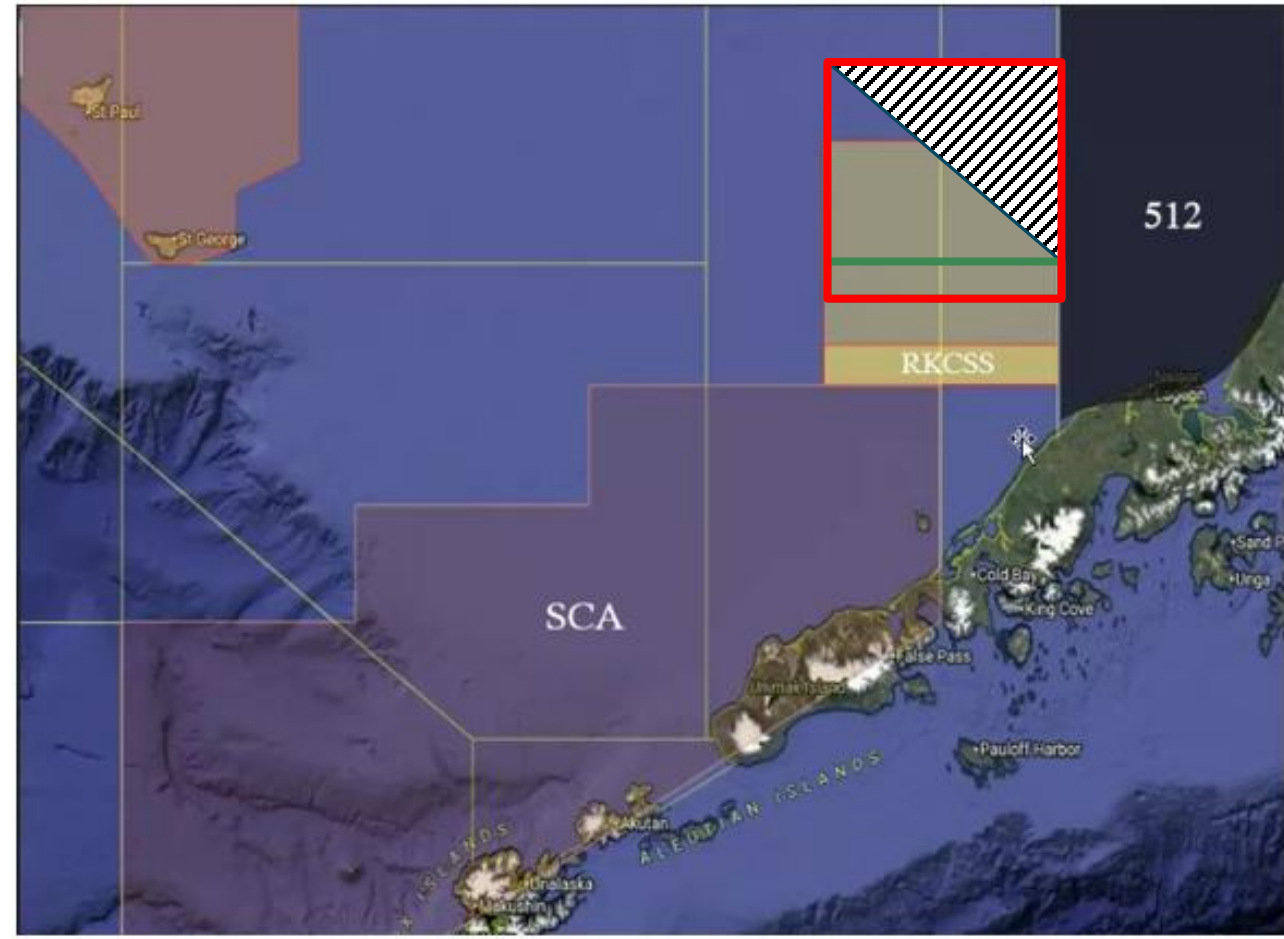
- First week, there were Chinook RHS closures outside of the RKCSA.
- Second week, Chinook rates in RKCSA were substantially lower than rates outside the RKCSA.
- Last of those three weeks, the Chinook rates were similar and low, indicating that Chinook rates were cleaning up outside of the RKCSA therefore the fleet had started moving back south and west.

### AIS, VMS, and catch accounting data were all used to monitor vessels and fishing activity. (all similar to salmon avoidance management and monitoring)

- Weekly IPA report used to inform fleet of closure status

Blue text indicates weeks of ice extent at or beyond the RKCSA

# Catcher Processor Fleet: Dynamic Spatial Closure A season 2026

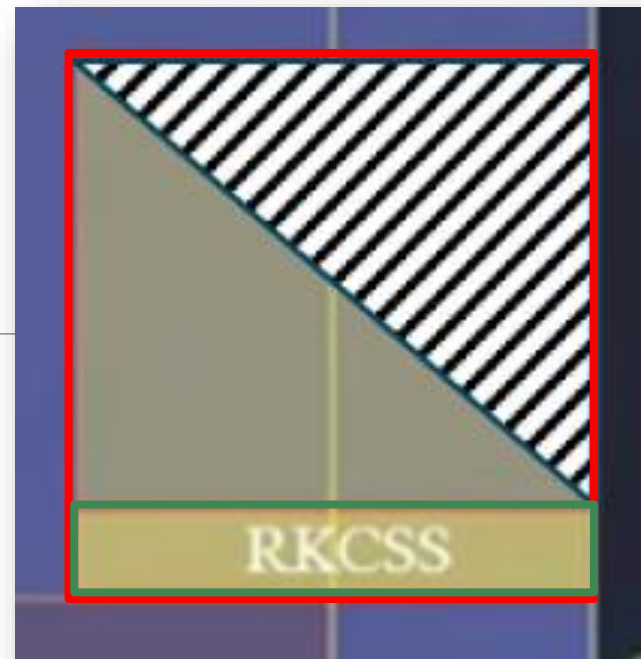


- **CP Fleet Dynamic Closure**

# CP Fleet Dynamic Closure

## Rules

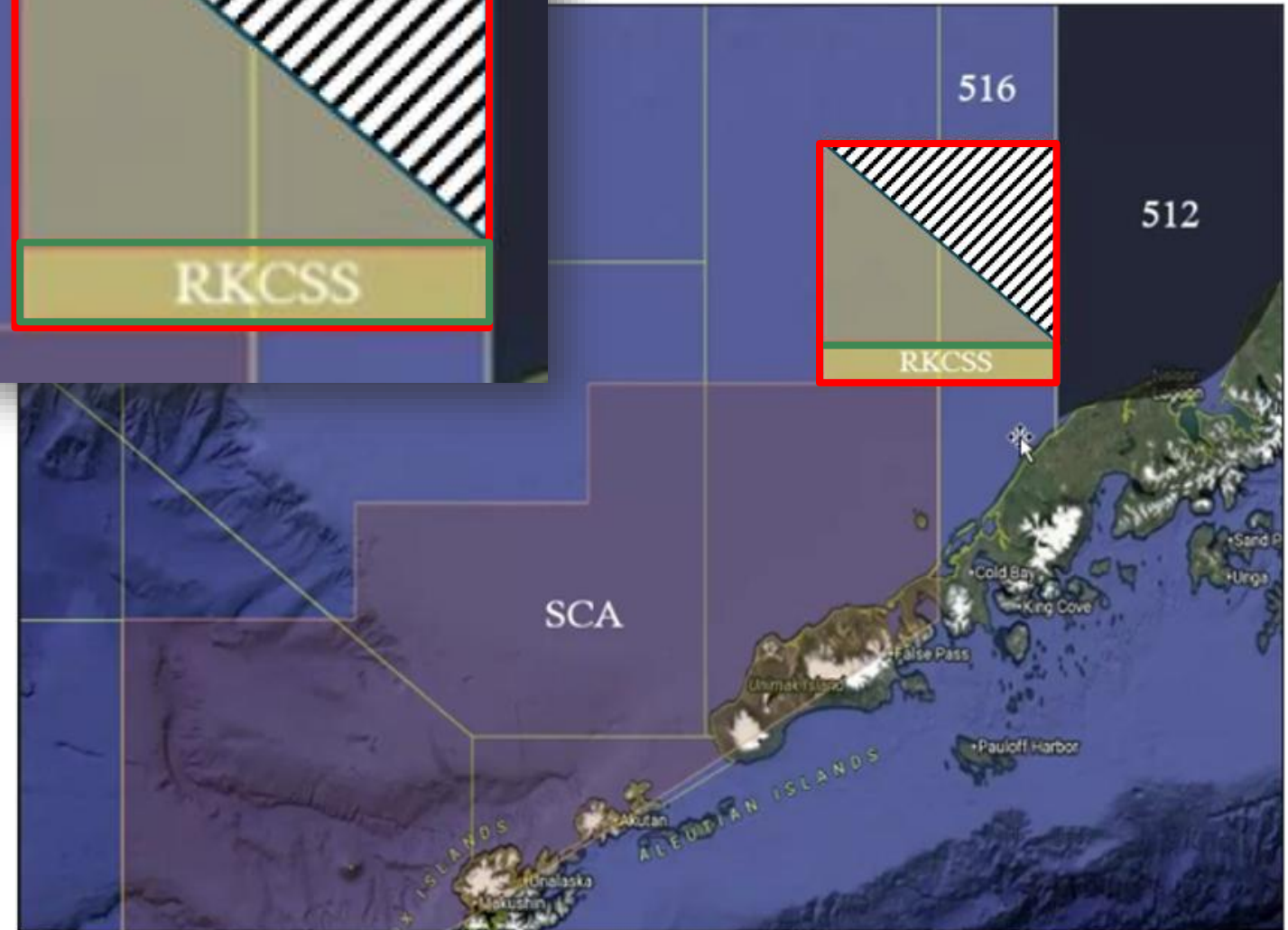
- **Effective:** Jan 31<sup>st</sup> – A Season End
- **Closure Area:**
  - 56°10' N 162° W;
  - 57° N 162° W; 57° N 164° W
  - Excludes RKCSS
- **Opens If:**
  - CP Fleet weekly\* bycatch rate  $\geq$  80% of Chinook performance standard  
(\* modified to be a 2-week rolling average)
- **Notification:**
  - Via weekly IPA Reports
  - Re-evaluated on a weekly basis



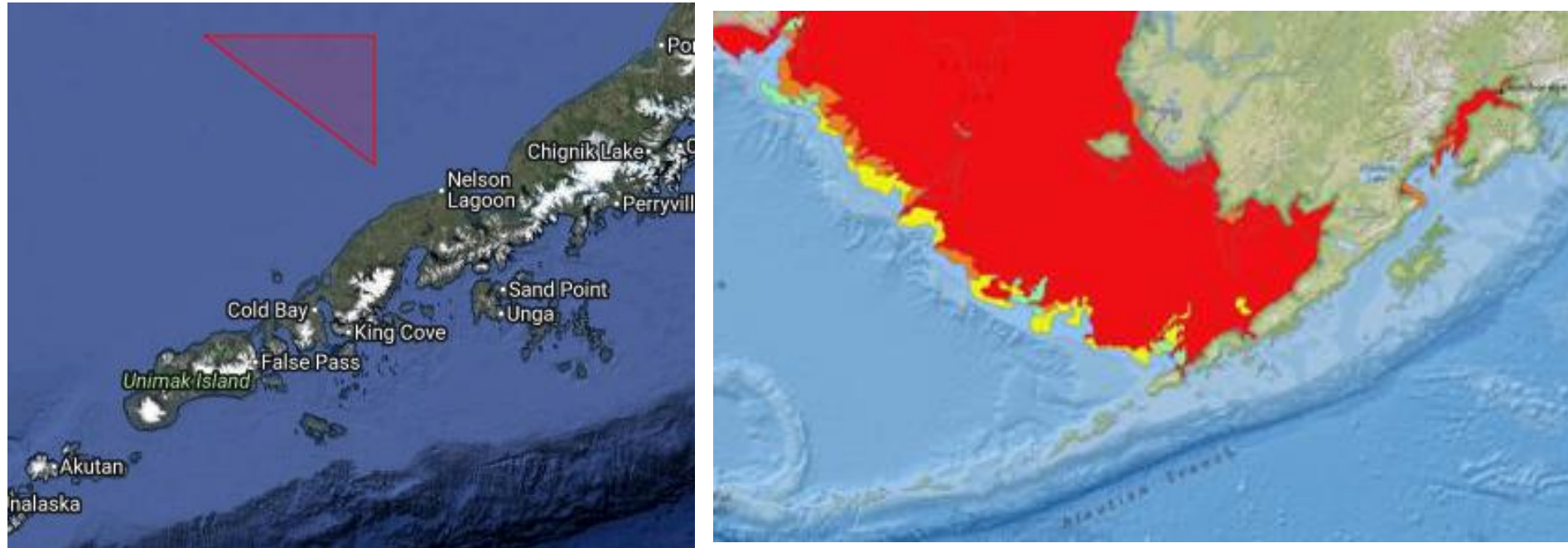
Closure Area – B&W Fill Area

RKCSA – Red Boundary

RKCSS – Green Boundary



# 2026 A season CP Crab Dynamic Spatial Closure



## ***Weeks the dynamic closure area was open and closed during the A season:***

- Remained closed from 1/31-4/1
- Representing all weeks and days following initial Chinook bycatch data collection,
- Due to sea ice extent, this area was unfishable in March

# 2026 A season CP Crab Dynamic Spatial Closure

## NEW THIS SEASON

**Red King Crab Savings Area (RKCSA) Dynamic Closure:** The RKCSA opens only if the two-week Chinook rate is  $\geq 80\%$  of the base rate; otherwise, it remains closed to protect crab. Because this week's Chinook rate outside the RKCSA is below 0.03, the RKCSA is closed to trawling this week. - Steve

## RKCSA Dynamic Closure area is CLOSED

### *Bycatch avoidance areas effective 2/27/2026 22:00 to 3/6/2026 22:00*

1	Red King Crab	57° 00' N	164° 00' W
		56° 50' N	164° 00' W
		56° 10' N	162° 00' W
		57° 00' N	162° 00' W
		57° 00' N	164° 00' W

**Map of bycatch avoidance areas**



# 2026 A season CP Crab Dynamic Spatial Closure

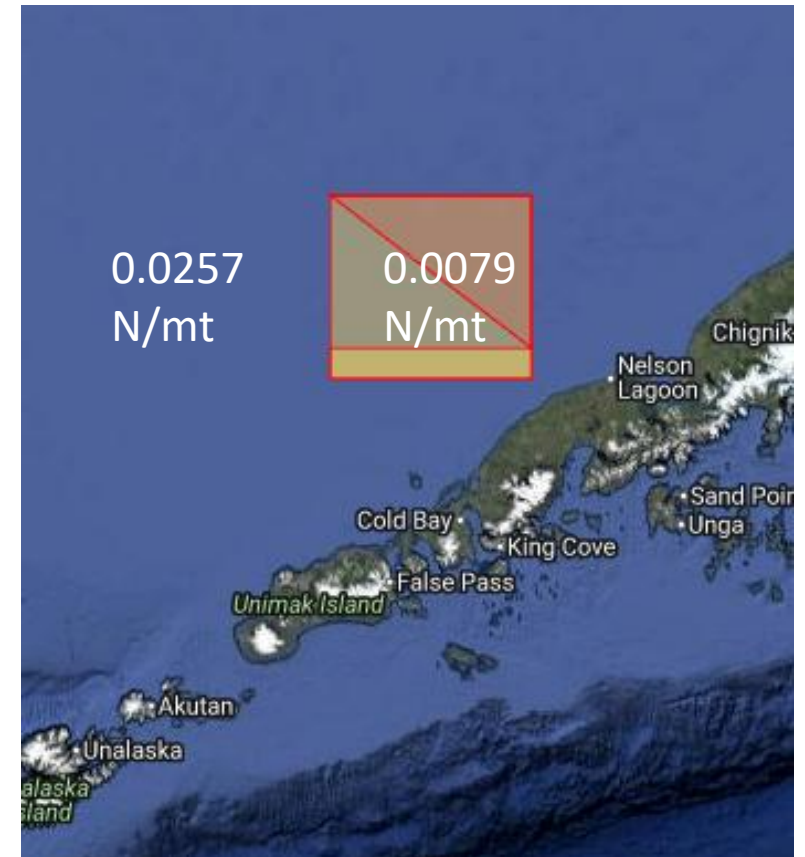
## ***Bristol Bay Red King Crab bycatch inside and outside the RKCSA :***

- Zero RKC were taken as bycatch both inside and outside the RKCSA

## ***Salmon bycatch rates inside and outside RKCSA in relation to the dynamic closure area trigger:***

- The CP Dynamic Closure does not have an inside vs. outside RKCSA bycatch rate trigger like the CV proposal.
- Inside the RKCSA 81 Chinook and 10,205 tons of pollock (Chinook rate: 0.0079 N/mt).
- Outside of the RKCSA 6,860 Chinook and 266,939 tons of pollock (Chinook rate: 0.0257 N/mt).

**Chinook bycatch rates outside the RKCSA were more than double the rates inside the box.**

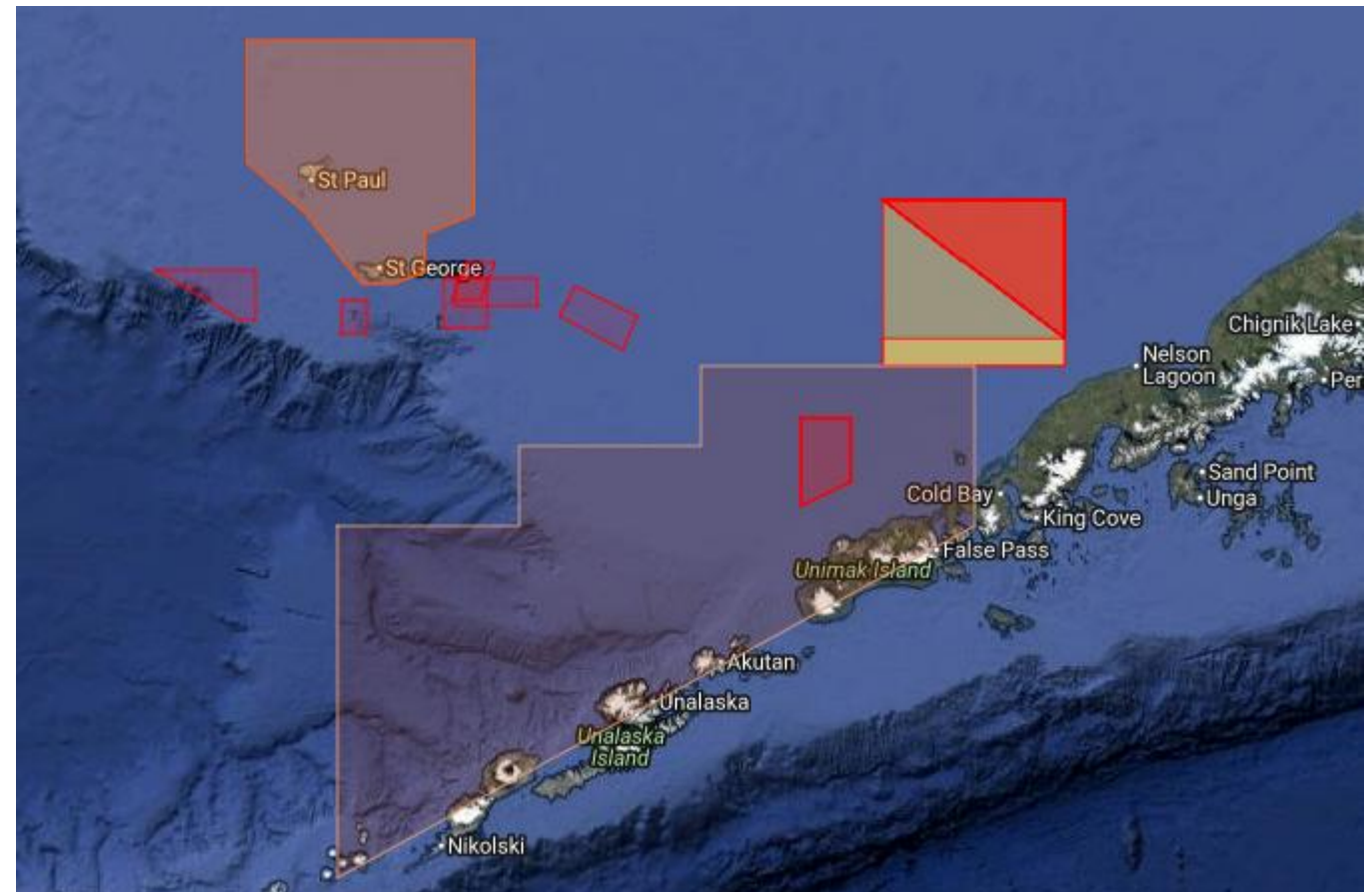


# 2026 A season CP Crab Dynamic Spatial Closure

***Description of salmon avoidance efforts inside and outside the RKCSA to illustrate use of the rate-based dynamic closure area trigger and the fleet's reliance on the RKCSA to avoid salmon:***

- The CP fleet never exceeded their rate-based Chinook dynamic closure area trigger
- The dynamic closure remained closed the entire season.
- The fleet was able to avoid the RKCSA more than in recent years

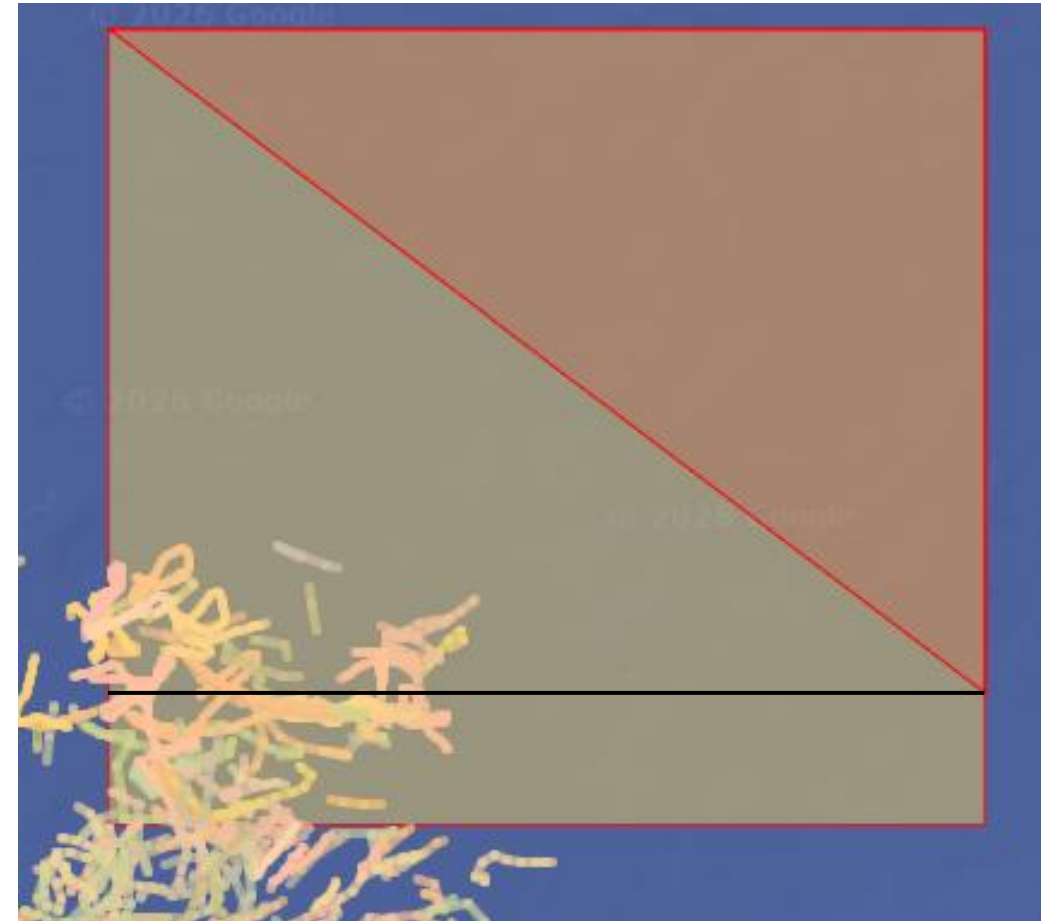
**This area remains critical for Chinook bycatch avoidance. Trends continually show lower bycatch rates inside vs. outside the RKCSA.**



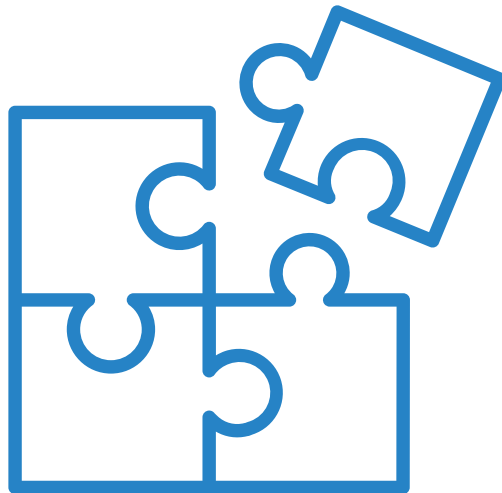
# 2026 A season CP Crab Dynamic Spatial Closure

***Vessel activities inside the RKCSA when the dynamic closure area was open and closed and methods used to monitor vessel activities:***

- SeaState provides real time VMS track data for all vessels.
- 3.7% of all hauls (71 out of 1,911) occurred in the RKCSA and all were in the far southwest corner.



# Keep In Mind



---

Fish move

---

Crab move

---

Different fishing seasons

---

Interannual variability

# Questions?