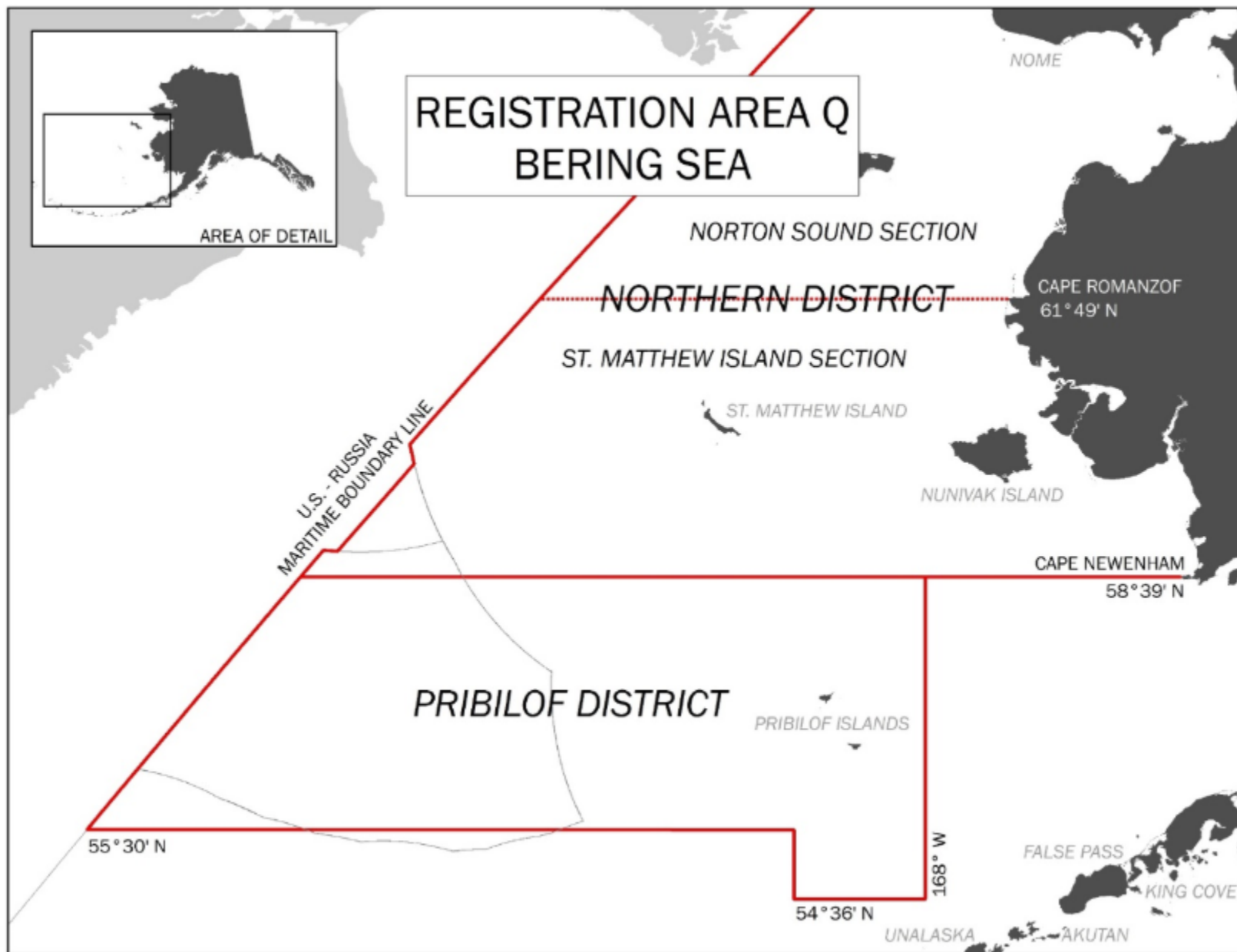


Pribilof Islands Golden King Crab 2026 Final Assessment

Tyler Jackson, ADF&G

May 2026 CPT



Directed Fishery

Opening annually by Commissioner's Permit

GHL = 130,000 lb (59 t) since 2015

40 – 50 pot limit depending on vessel size

Low participation since 2021, directed fishery data is confidential

Bycatch

Sporadic non-directed crab fishery bycatch

- Snow crab
- Grooved Tanner crab

Groundfish fishery bycatch ~ 0 – 5 t annually

- POP / Rockfish trawl
- Cod long line
- Flatfish trawl

Does not approach ABC

Metric t									
Year	Tier	Biomass (MMB)	Reference Years	GHL	Retained Catch	Total Catch	OFL	ABC	
2021	5	N/A	1993-1998	59	15.5	21.6	93.0	70.0	
2022	5	N/A	1993-1998	59	CF	CF	93.0	70.0	
2023	5	N/A	1993-1998	59	CF	CF	93.0	70.0	
2024	5 GF	517	2002-2016	59	CF	CF	113.7	85.3	
2025	5 GF	517	2002-2016	59	CF	CF	113.7	85.3	
2026	5 GF	517	2002-2016	59	CF	CF	113.7	85.3	
2027	5 GF	512	2002-2016				112.6	84.5	
2028	5 GF	512	2002-2016				112.6	84.5	
2029	5 GF	512	2002-2016				112.6	84.5	

CPT 2023 recommended Tier 5, SSC accept GF Tier 5, based on EBS Slope Survey

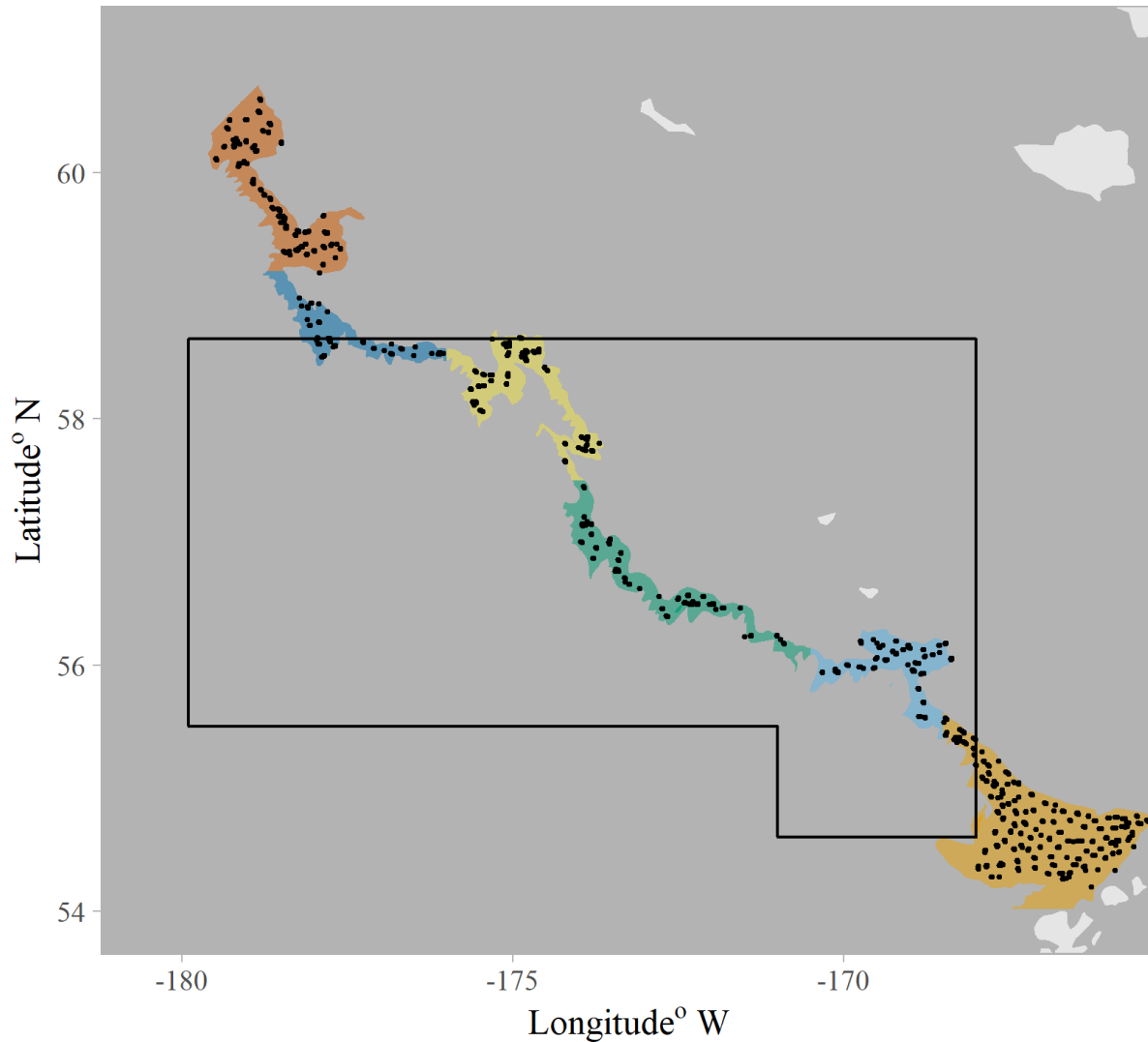
OFL = $M \times$ MMB

$$M = 0.22 \text{ yr}^{-1}$$

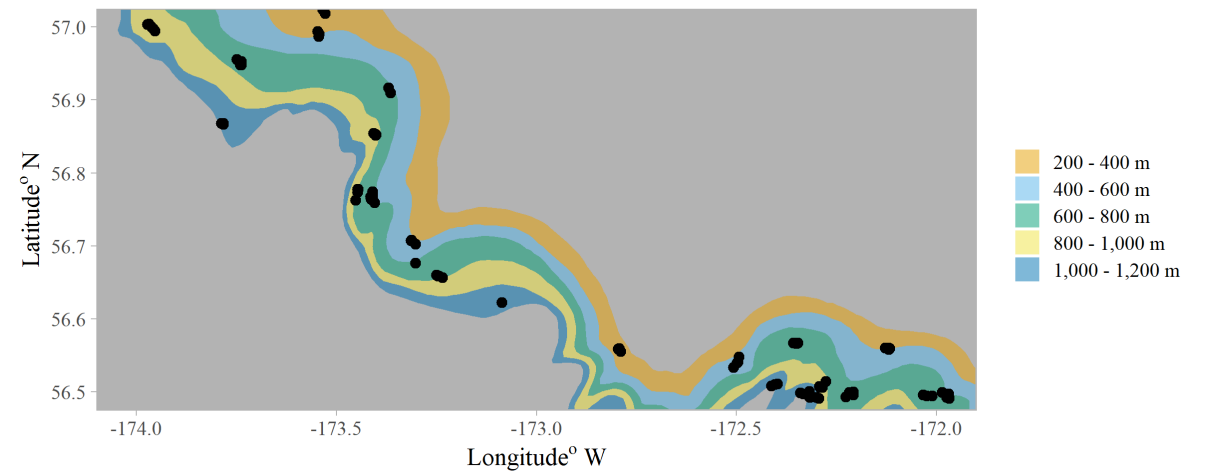
Size at Maturity = 107 mm CL

NMFS EBS Slope Survey

- 2002, 2004, 2008, 2010, 2012, 2016
- Size/Sex of GKC not recorded in 2002, 2004
- Use average ratio MMB to Total Biomass 2008 - 2016



Data courtesy of J. Hoff (ASFC)



Year	Total Biomass (t)	CV	MMB (t)	CV	Ratio
2002	707	0.27	312	0.29	
2004	1,050	0.38	464	0.40	
2008	969	0.22	556	0.31	0.574
2010	1,632	0.23	646	0.26	0.396
2012	1,167	0.31	355	0.34	0.304
2016	1,492	0.21	736	0.32	0.493
Mean			512		0.442

$$\text{OFL} = 512 * 0.22 = 112.6 \text{ t}$$

$$\text{ABC} = (1 - 0.25) * \text{OFL} = 84.5 \text{ t}$$