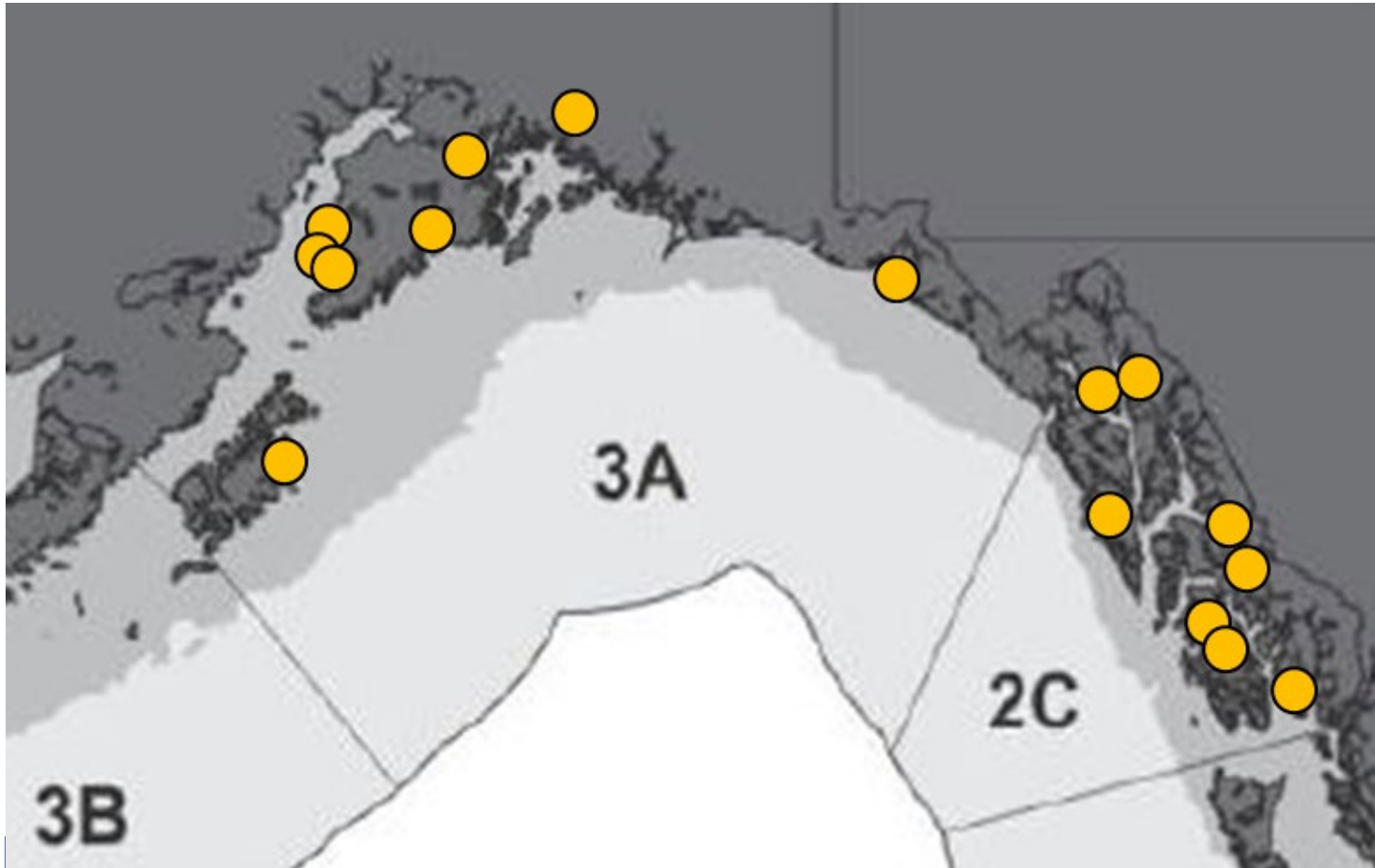


Final 2024 Harvest Estimates & Preliminary 2025 Harvest Estimates: Area 2C and 3A Charter Halibut Fisheries



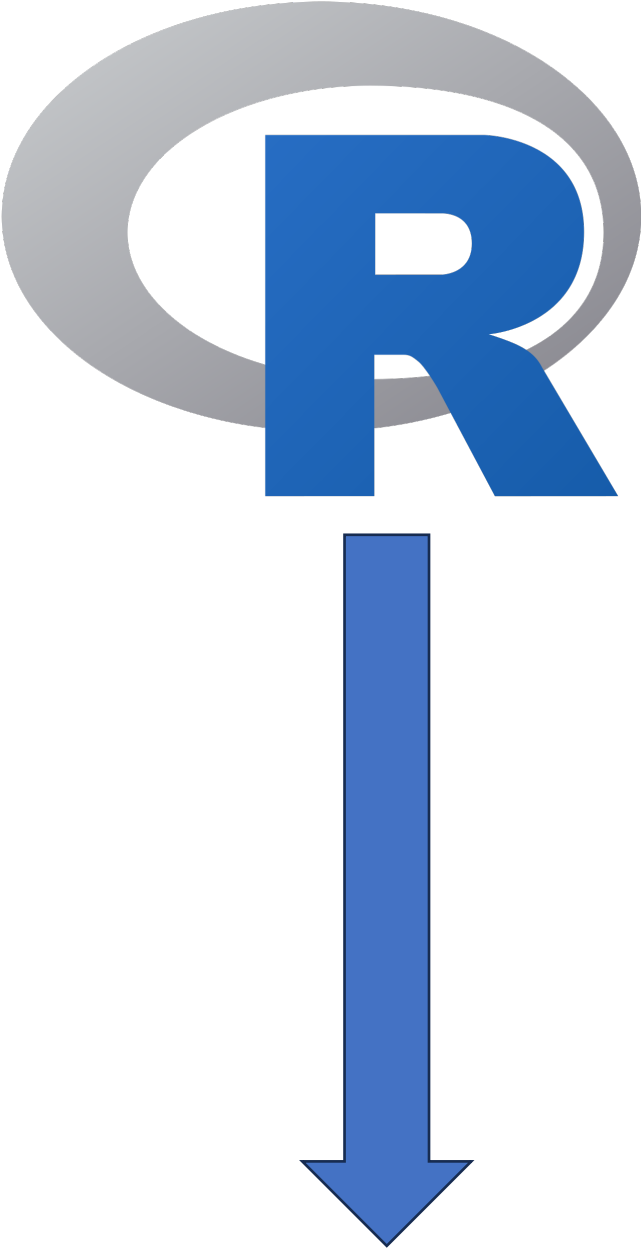
**For the Charter Halibut Management Committee
October 2025**

Adam St. Saviour
Alaska Department of Fish and Game



Data Sources

- Charter logbook
- Sampling at major ports
- Statewide harvest survey





2024 Final Estimates

2C 2024 Charter Regulations

- One fish bag limit
- Reverse slot limit:
 - Less than or equal to 40 inches through July 14
 - Less than or equal to 36 inches after July 15
 - Greater than or equal to 80 inches
- Fridays closed July 19 – September 13

Final 2C Charter Halibut Estimates for 2024

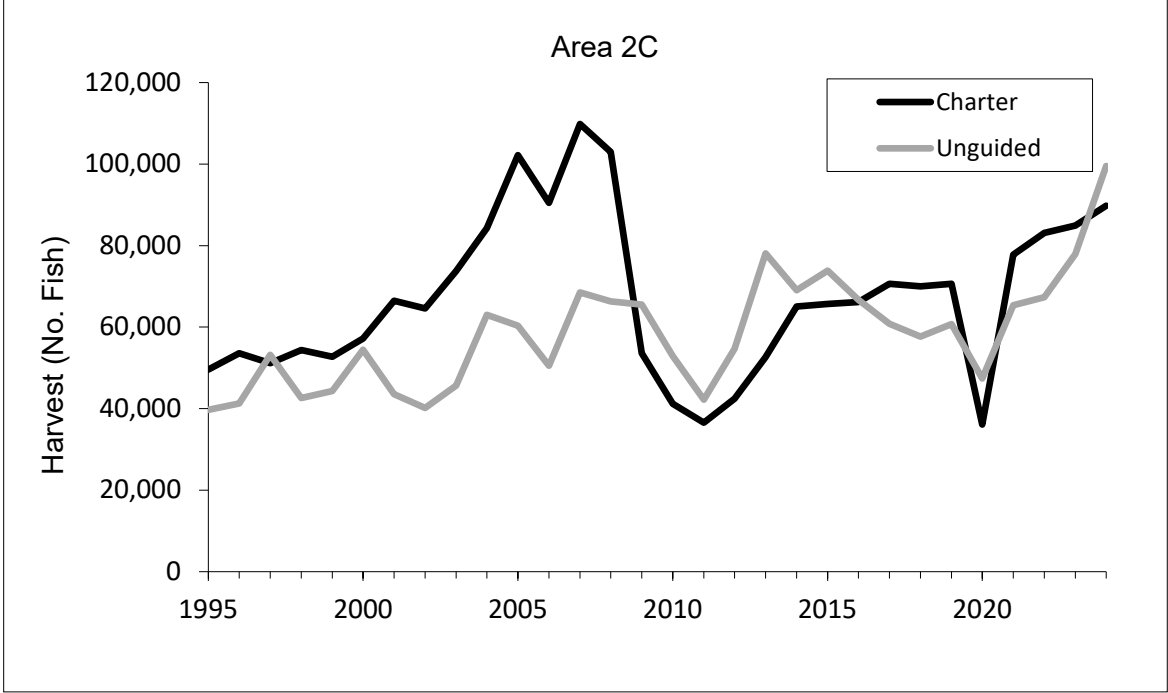
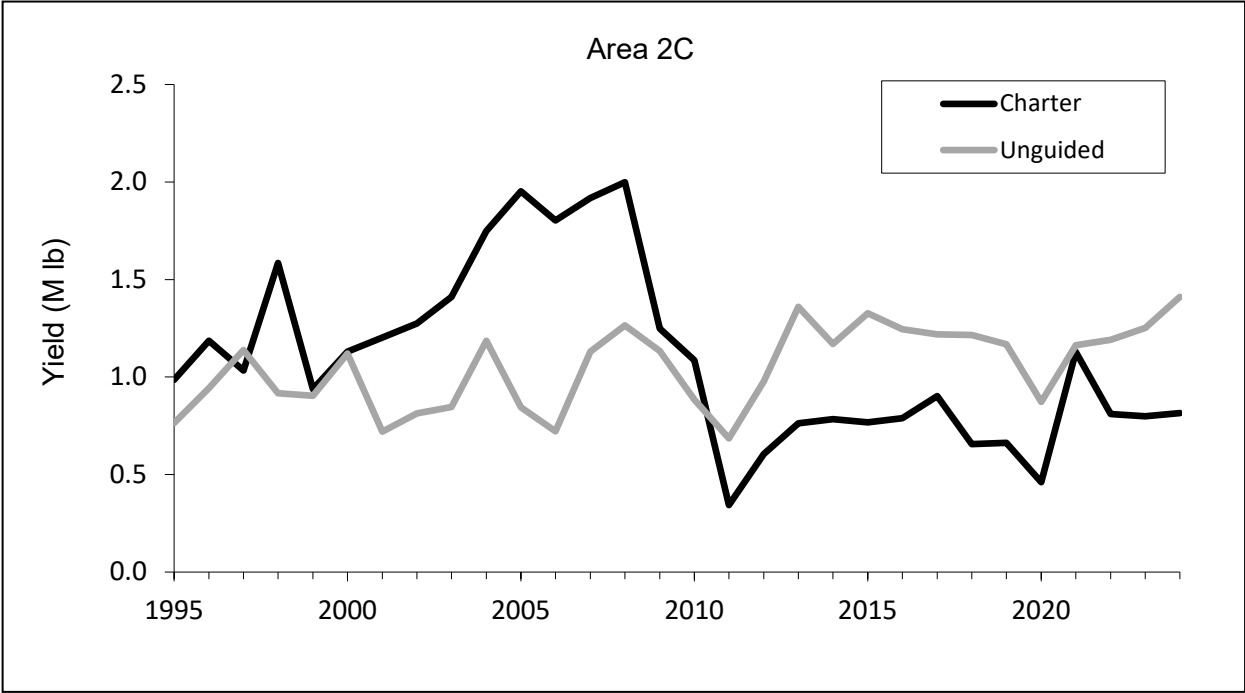
Subarea	Num Fish Charter ^a	Avg Wt Charter ^b	Yield Charter	Num Fish Unguided ^a	Avg Wt Unguided ^b	Yield Unguided
Ketchikan	15,262	8.10	0.124	13,244	11.85	0.157
POW Island	24,142	7.73	0.187	17,593	10.43	0.184
PBurg_Wrang	1,801	12.85	0.023	20,567	12.72	0.262
Sitka	28,313	10.56	0.299	8,840	13.92	0.123
Jun_Haines_Skag	10,318	6.88	0.071	13,339	9.91	0.132
Glacier_Bay_2C	9,950	11.26	0.112	25,945	21.34	0.554
Total_2C	89,786	9.08	0.815	99,528	14.18	1.411

From Area2C3A_Final2024 (Table 1.1)

User	Removals	Preliminary	Final	Difference Mlb	Percent Error
Charter	Yield	0.810	0.815	-0.005	-0.6%
Charter	All Rel Mort	0.032	0.038	-0.006	-18.7%
Charter	Total	0.842	0.853	-0.011	-1.3%
Unguided	Yield	0.992	1.411	-0.419	-42.2%
Unguided	All Rel Mort	0.017	0.034	-0.017	-100.0%
Unguided	Total	1.009	1.445	-0.436	-43.2%

From Area2C3A_Final2024 (Table 1.3)

2C Charter Halibut Yield and Harvest 2000 – 2024



3A 2024 Charter Regulations

- Two fish bag limit
 - One fish of any size
 - One fish less than or equal to 28 inches
- All Wednesdays closed
- One trip with halibut harvest per CHP per day
- One trip with halibut harvest per vessel per day

Final 3A Charter Halibut Estimates for 2024

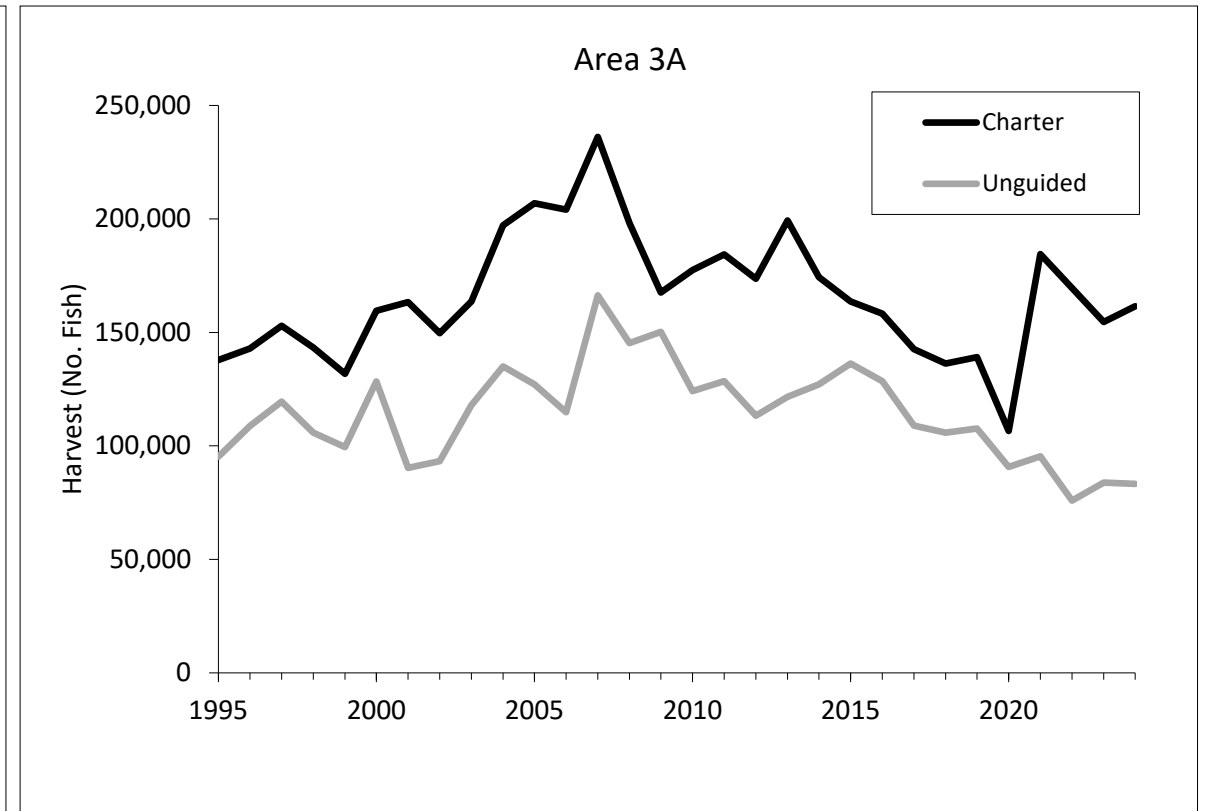
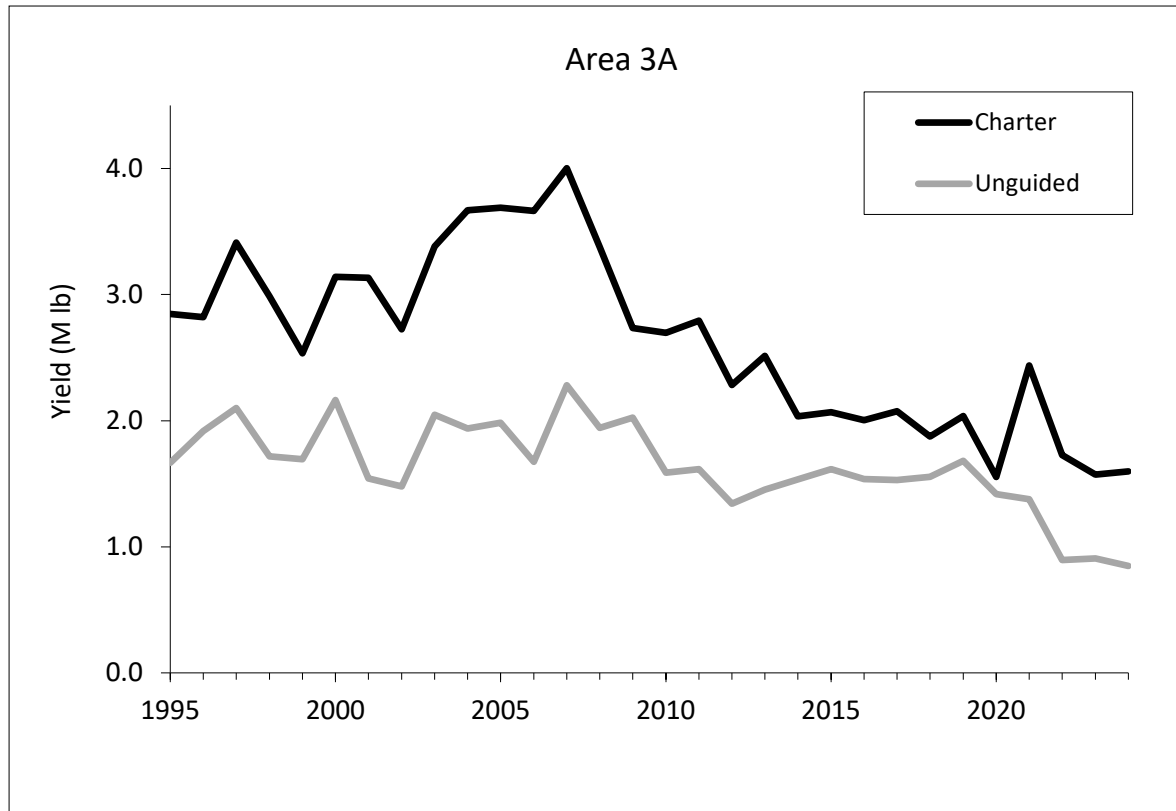
Subarea	Num Fish Charter ^a	Avg Wt Charter ^b	Yield Charter	Num Fish Unguided ^a	Avg Wt Unguided ^b	Yield Unguided
Central Cook Inlet	22,617	8.84	0.200	20,675	9.95	0.206
Lower Cook Inlet	75,190	9.29	0.698	31,185	8.74	0.273
Kodiak	13,947	12.45	0.174	6,691	13.25	0.089
North Gulf Coast	34,704	8.38	0.291	8,025	10.90	0.087
Eastern PWS	5,315	12.99	0.069	8,522	10.41	0.089
Western PWS	6,201	9.58	0.059	5,446	11.92	0.065
Yakutat	2,835	28.38	0.080	2,709	14.77	0.040
Glacier_Bay_3A	703	36.48	0.026	NA	NA	NA
Total_3A	161,512	9.89	1.598	83,253	10.19	0.848

Area2C3A_Final2024
(Table 2.1)

User	Removals	Preliminary	Final	Difference Mlb	Percent Error
Charter	Yield	1.591	1.598	-0.007	-0.4%
Charter	All Rel Mort	0.017	0.019	-0.002	-11.8%
Charter	Total	1.608	1.617	-0.009	-0.6%
Unguided	Yield	0.862	0.848	0.014	1.6%
Unguided	All Rel Mort	0.016	0.019	-0.003	-18.7%
Unguided	Total	0.878	0.867	0.011	1.3%

Area2C3A_Final2024
(Table 2.3)

3A Charter Halibut Yield and Harvest 1995 –2024





Preliminary 2025 Estimates

Photo:
Ryan
Ragan

2C 2025 Charter Regulations

- One fish bag limit
- Closed all Tuesdays from May 13 to September 9
- Reverse slot limit:
 - Less than or equal to 37 inches
 - Greater than or equal to 80 inches
- One trip with halibut harvest per CHP per day
- One trip with halibut harvest per vessel per day

3A 2025 Charter Regulations

- Two fish bag limit
 - One fish of any size
 - One fish less than or equal to 27 inches
- Wednesdays and Tuesdays closed to retention of halibut
- One trip with halibut harvest per CHP per day
- One trip with halibut harvest per vessel per day

Preliminary 2025 Estimates

IPHC Area	Harvest			Release	Total	Allocation	Overage	Overage pct
	Mean Wt lb	Num Fish	Yield lb	Mortality lb	Removals lb			
Area_2C	9.20	76,683	705,484	28,336	733,820	720,000	13,820	1.9%
Area_3A	9.83	140,570	1,381,803	15,294	1,397,097	1,480,000	-82,903	-5.6%

From InfoHandoutADF&G_2025 (Table 1)

Comparison of Forecast to Preliminary Harvest Estimate

IPHC Area	Component	Predicted	Prelim Oct	% Diff Pred
		Dec 2024	2025	vs Prelim
Area_2C	Harvest_Num_Fish	78,195	76,683	-1.9%
	Mean_Wt_lb	8.78	9.20	4.8%
	Yield_Mlb	0.686	0.705	2.8%
	Release_Mortality_Mlb	0.029	0.028	-3.4%
	Total_Removals_Mlb	0.715	0.734	2.7%
Area_3A	Harvest_Num_Fish	138,670	140,570	1.4%
	Mean_Wt_lb	10.39	9.83	-5.4%
	Yield_Mlb	1.441	1.382	-4.1%
	Release_Mortality_Mlb	0.012	0.015	25.0%
	Total_Removals_Mlb	1.453	1.397	-3.9%

From InfoHandoutADF&G_2025 (Table 2)

Predictive models for the upcoming season

- Effort = last year's effort
- Average weight = Avg weight by subarea for a given slot limit using older data
 - A correction factor is applied that adjusts weights closer to recently observed
- HPUE = forecasted value that weights the most recent years most heavily

Release mortality estimation

- $RM = \text{Number released logbook} * \text{Mortality rate (5-6\%)} * \text{mean weight}$
- Mean weight is estimated by subarea using a logistic model that estimates the proportion of catch that is retained by length
 - Larger fish are more likely to be retained so contribute less to RM
- Area 2C releases are partitioned into U37, 37-80, and O80

Acknowledgements

- Phil Joy, Jiaqi Huang, Matt Tyers – ADF&G
- Ben Jevons, Kayla Buster – logbook data
- Diana Tersteeg, Phil Richards – Southeast data
- Clay Mckean, Marian Ford – Southcentral data
- Nick Smith, Jake Bozzini – SWHS
- Sarah Marrinan– NPFMC staff
- Numerous technicians – halibut measurements and angler interviews
- Cooperating anglers and charter operators
- Funding:
 - State of Alaska General Funds
 - DJ-WB Federal Aid in Fish Restoration
 - Fish & Game Funds





Questions

Adam St. Saviour

Alaska Department of Fish and Game – Division of
Sport Fish

Palmer

adam.stsaviour@alaska.gov

907-746-6300