

Appendix A: Update to Fishery Data

Tyler Jackson

Alaska Department of Fish and Game, tyler.jackson@alaska.gov

May 2025

Purpose

Ongoing efforts to standardized methods for summarizing fishery time series data resulted in minor changes to total catch and observer total size composition data for AIGKC. Difference are due to exclusion of pots with compromised biotwine and data filtering associated with estimation of average fishery weight (used in total catch estimation). Standardized methods for fishery data processing are detailed within the R package *BSAICrabR*, stored at <https://github.com/commfish/BSAICrabR>. Data processing specific to AIGKC are found here: [aigkc_BSAICrabR.R](#). A comparison of time series data for which changes were made are detailed in table and figures below.

Table 1: Comparison of estimates of total catch (t) between status quo and updated data summaries for the EAG and WAG.

Year	EAG		WAG	
	Status Quo	Updated	Status Quo	Updated
1990	3,521	3,521	2,695	2,695
1991	4,017	4,017	1,705	1,705
1992	5,118	5,118	1,201	1,201
1994	3,974	3,974	5,197	5,197
1995	4,658	4,658	3,171	3,171
1996	3,208	3,208	2,291	2,291
1997	2,897	2,897	1,856	1,856
1998	2,951	2,951	1,590	1,590
1999	2,541	2,541	2,079	2,079
2000	2,592	2,592	2,314	2,314
2001	2,154	2,154	2,176	2,176
2002	1,871	1,871	1,889	1,889
2003	1,854	1,854	1,782	1,782
2004	1,670	1,670	1,839	1,839
2005	1,620	1,620	1,646	1,646
2006	1,617	1,617	1,400	1,400
2007	1,755	1,755	1,593	1,593
2008	1,774	1,796	1,696	1,762
2009	1,793	1,814	1,682	1,721
2010	1,702	1,709	1,602	1,618
2011	1,801	1,805	1,542	1,547
2012	1,946	1,950	1,778	1,785
2013	1,854	1,854	1,880	1,913
2014	1,965	1,948	1,584	1,618
2015	2,206	2,210	1,522	1,534
2016	2,214	2,221	1,493	1,506
2017	2,334	2,350	1,420	1,420
2018	2,778	2,783	1,639	1,643
2019	3,039	3,044	1,614	1,618
2020	2,605	2,605	1,763	1,817
2021	2,388	2,408	1,567	1,569
2022	2,078	2,091	1,122	1,130
2023	2,304	2,316	1,130	1,136
1993			1,887	1,887

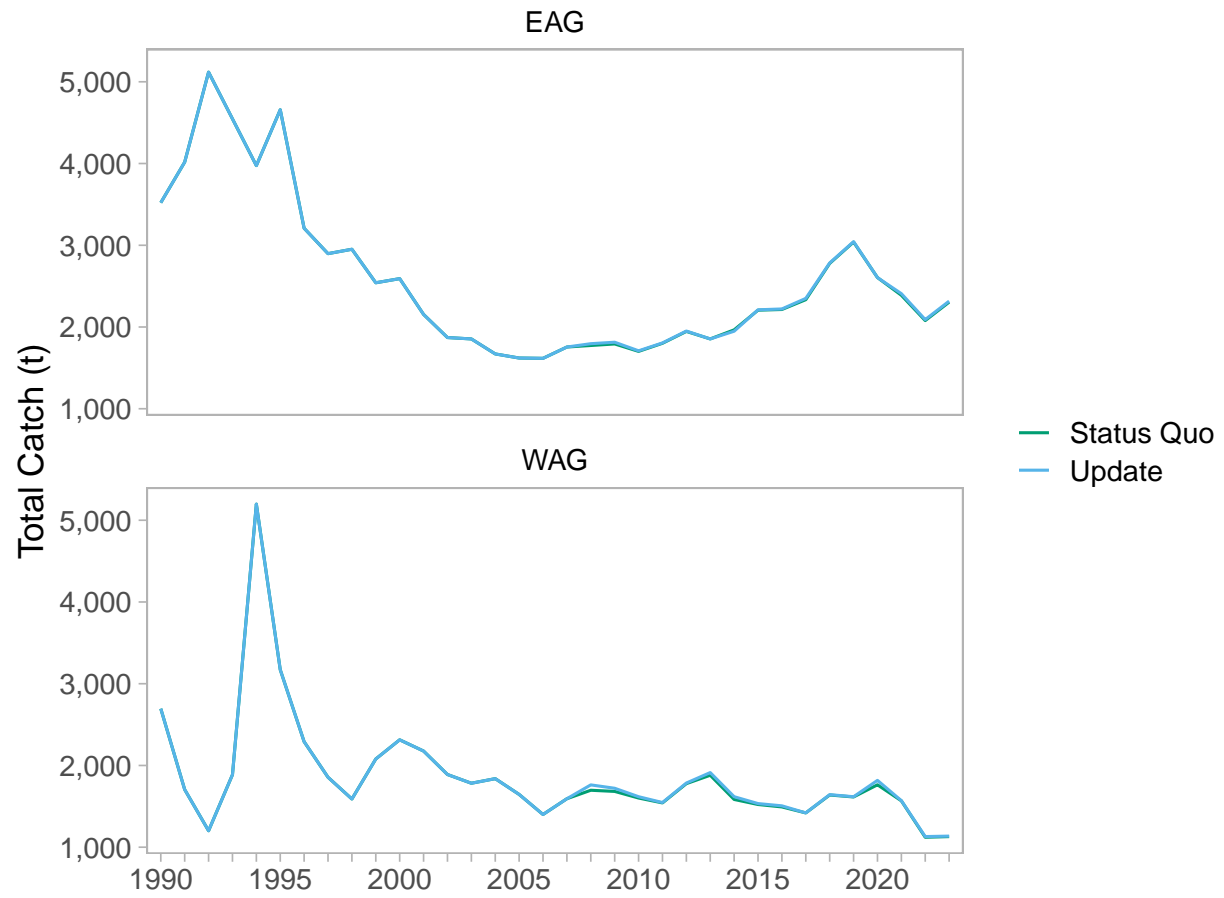


Figure 1: Comparison of estimates of total catch (t) between status quo and updated data summaries for the EAG and WAG.

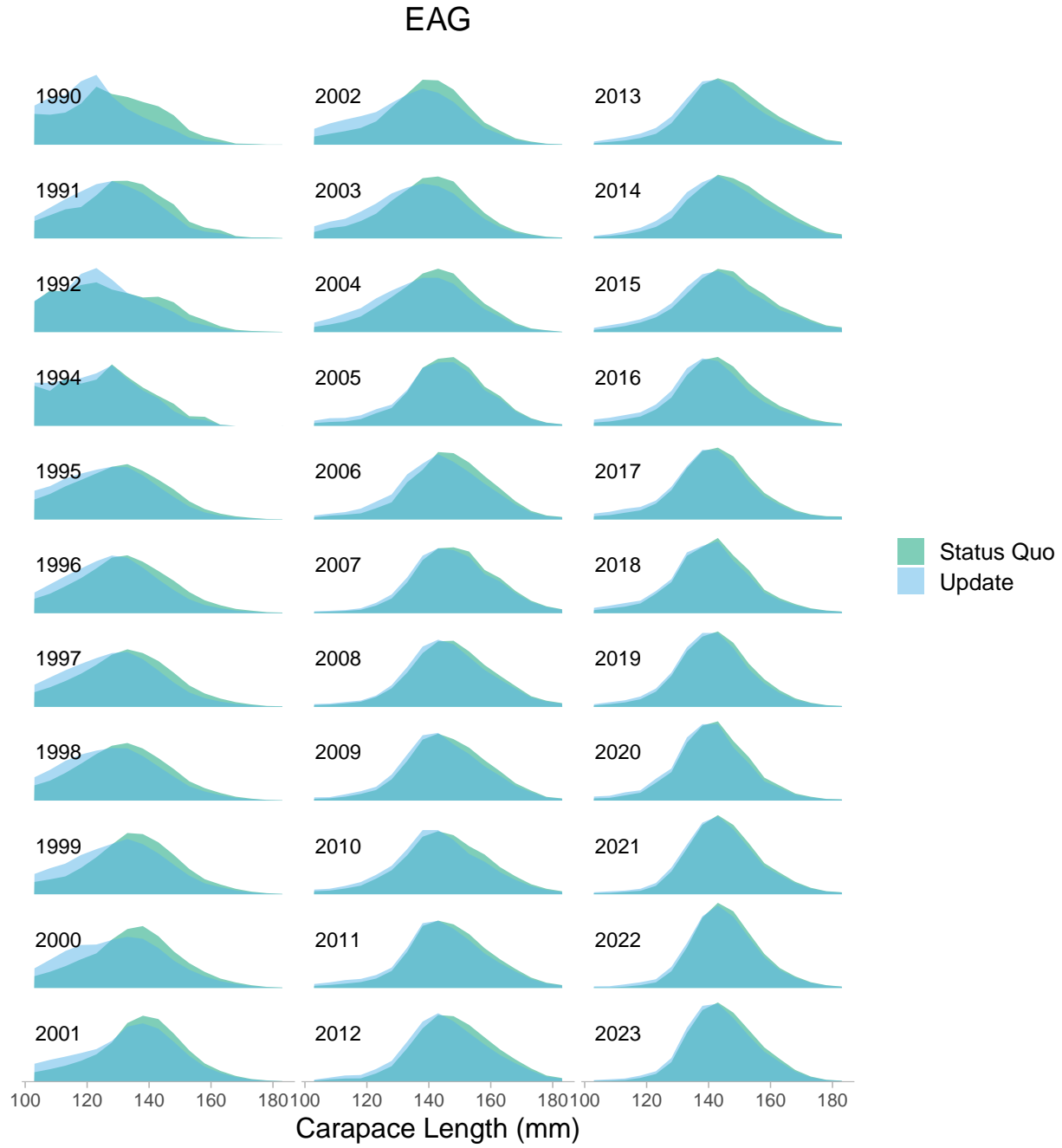


Figure 2: Comparison of estimates of total catch size composition between status quo and updated data summaries for the EAG.

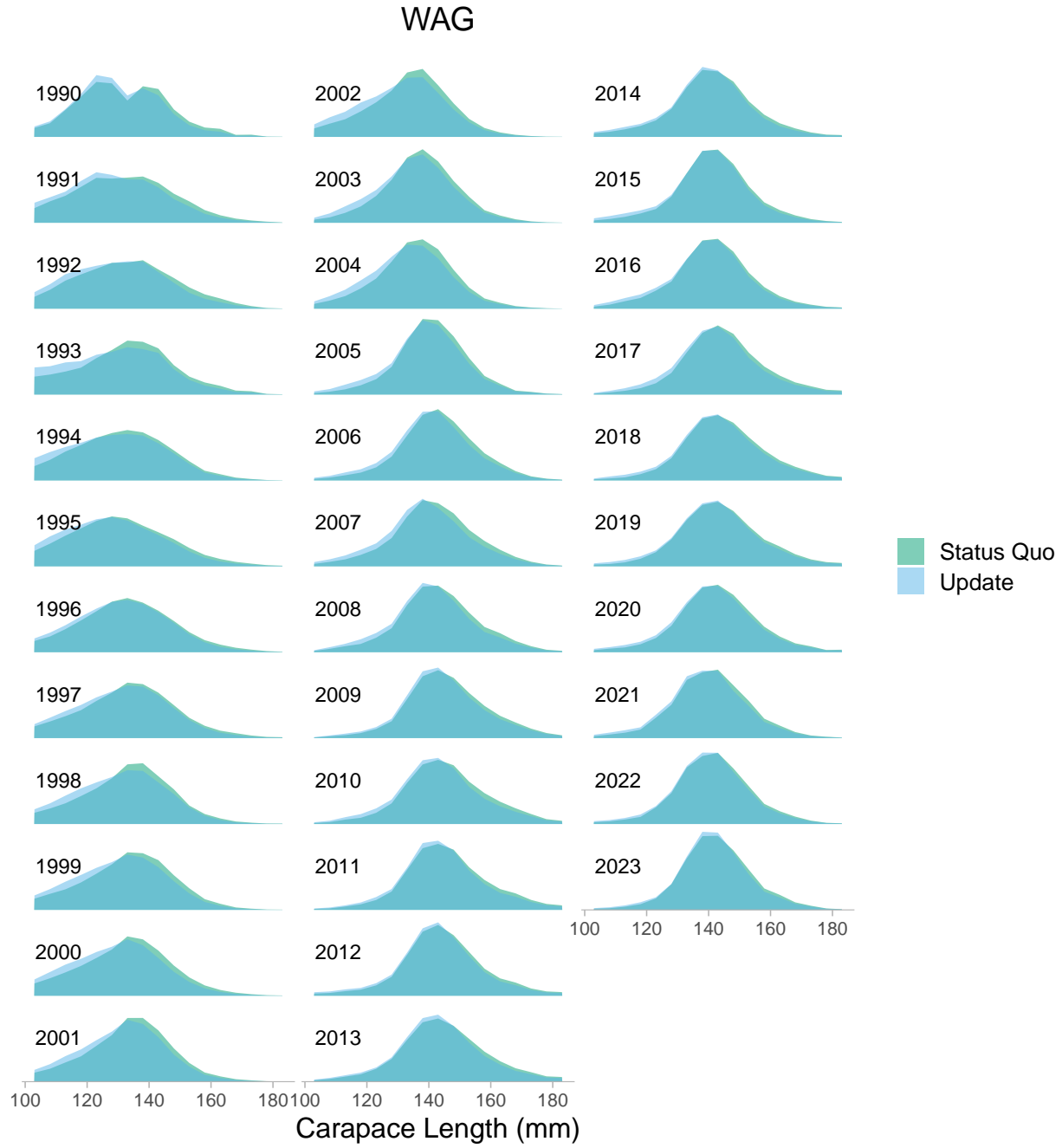


Figure 3: Comparison of estimates of total catch size composition between status quo and updated data summaries for the WAG.