

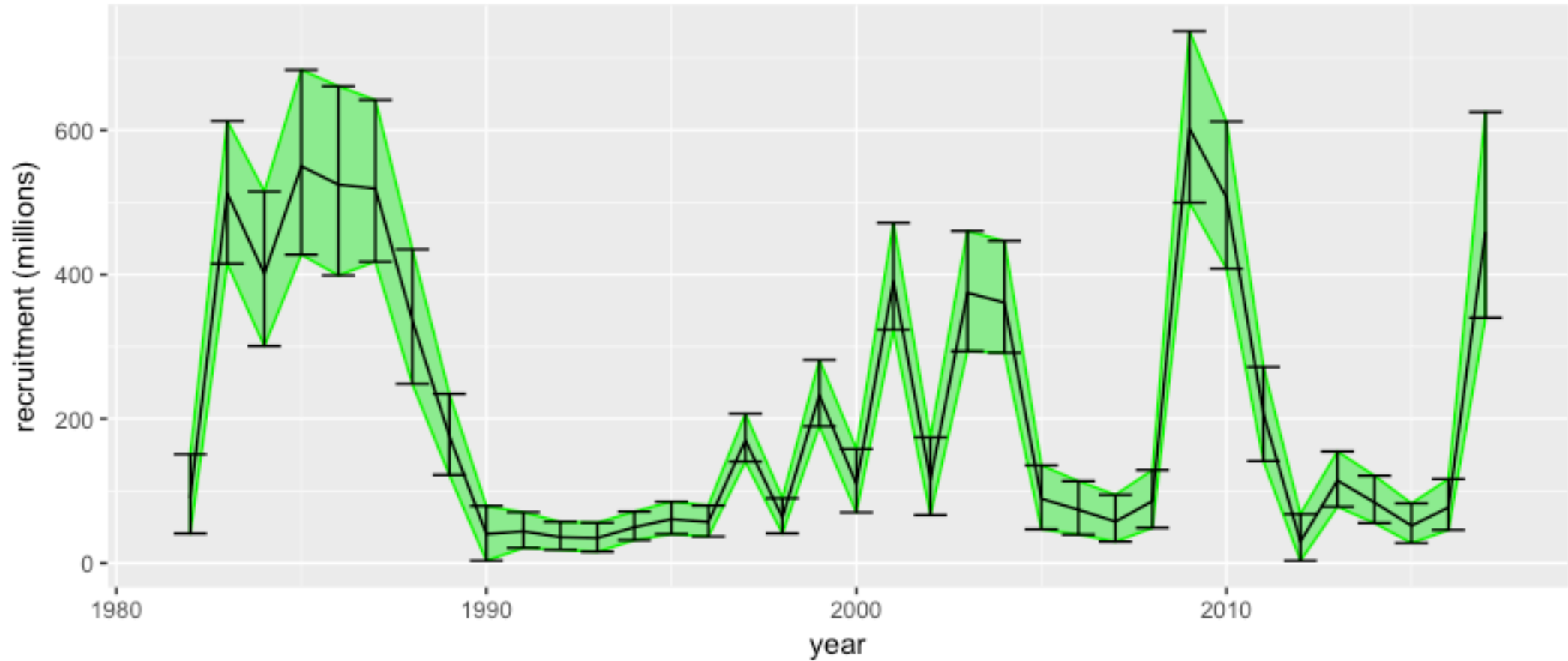
Terminal Year for Tier 3 Average Recruitment Calculation

William Stockhausen
Alaska Fisheries Science Center
NOAA/NMFS

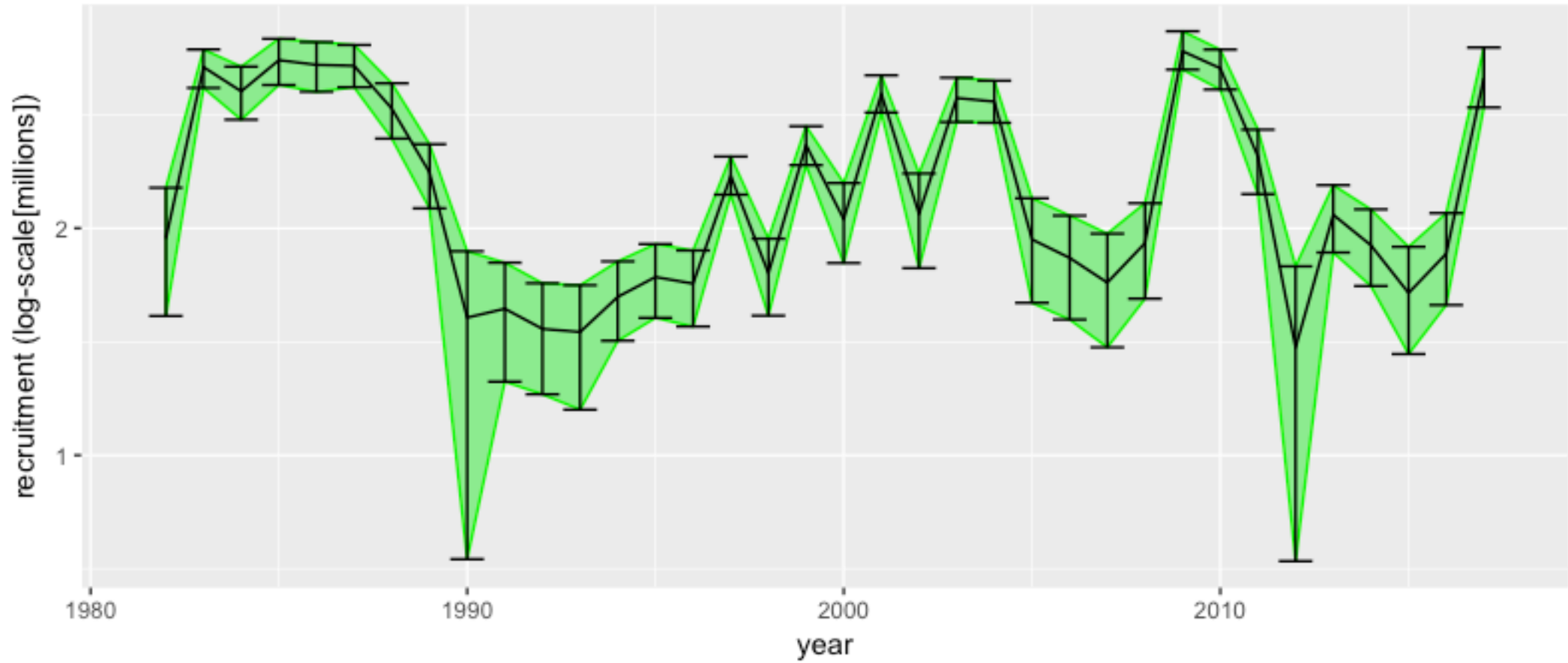
Terminal Year for Tier 3 Average Recruitment Calculation

- Tier 3 assessments require an estimate of average recruitment in order to convert SPR values to population biomass
- Issue: what time period to use for averaging?
 - per SSC directive, most assessments use the 1977 regime shift as the “benchmark” for the first year
 - what should be the “terminal” year for computing the average?
 - Tanner crab uses final model year
 - Snow crab uses final year – 1
 - AIGKC uses 2012
- Considerations
 - larger uncertainty in estimates for final model year(s)?
 - annual variability in average recruitment

Terminal Year for Tier 3 Average Recruitment Calculation



Terminal Year for Tier 3 Average Recruitment Calculation



Terminal Year for Tier 3 Average Recruitment Calculation

- Tanner crab

terminal year	average	std dev	CV	% change
2012	224.1	14.0	0.06	--
2013	220.7	13.8	0.06	-1.5
2014	216.6	13.6	0.06	-1.9
2015	211.7	13.2	0.06	-2.2
2016	207.9	13.1	0.06	-1.8
2017	215.2	13.8	0.06	3.5

