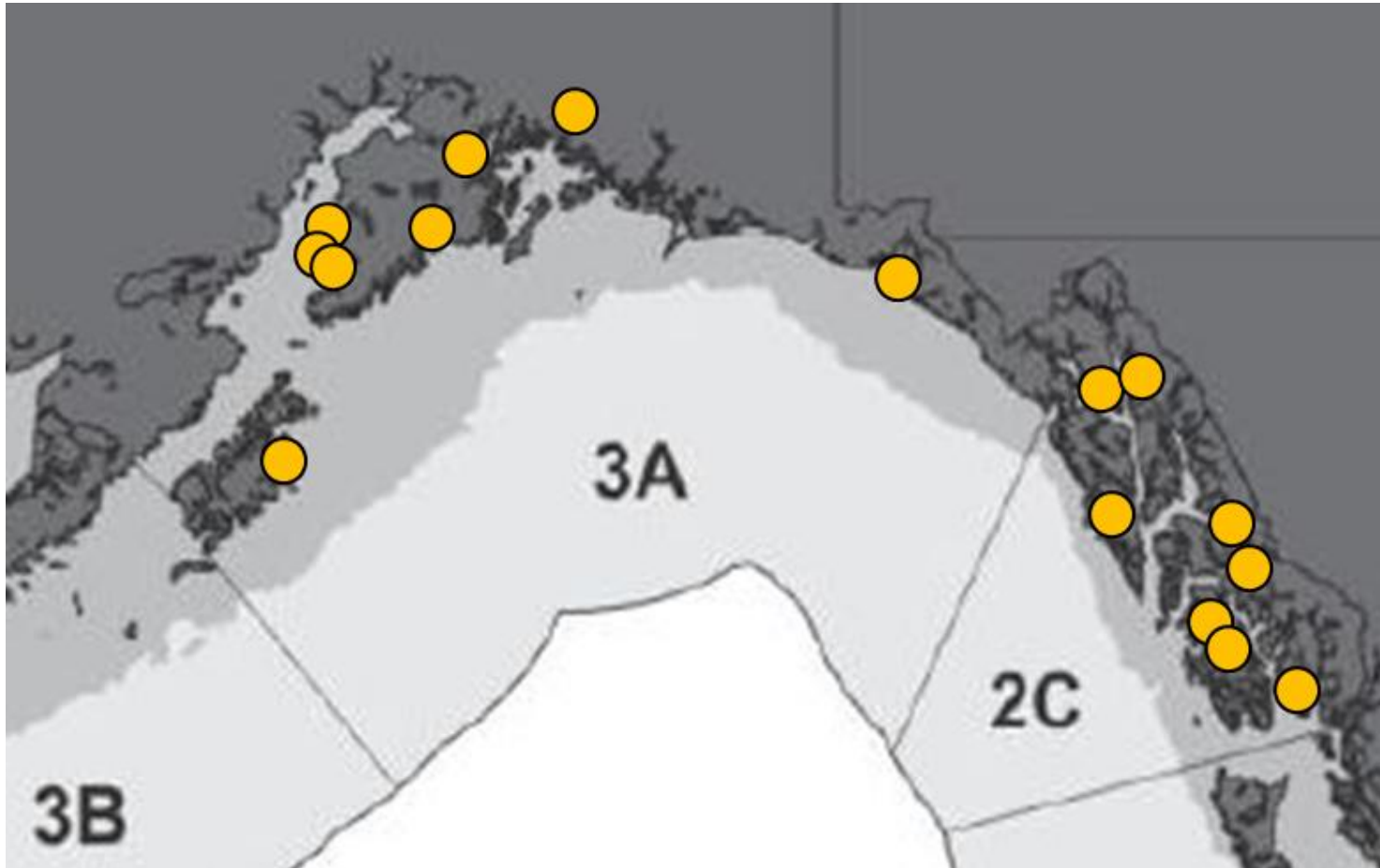


# **Final 2020 Harvest Estimates & Preliminary 2021 Harvest Estimates: Area 2C and 3A Charter Halibut Fisheries**



**For the Charter Halibut Management Committee  
October 2021**

Sarah Webster  
Alaska Department of Fish and Game



## Data Sources

- Charter logbook
- Sampling at major ports
- Statewide harvest survey



# 2020 Final Estimates

# 2C 2020 Charter Regulations

- One fish bag limit
- Reverse slot limit:
  - Thru June 14:
    - Less than or equal to 40 inches
    - Greater than or equal to 80 inches
  - June 15 – Dec 31:
    - Less than or equal to 45 inches
    - Greater than or equal to 80 inches

# Final 2C Charter Halibut Estimates for 2020

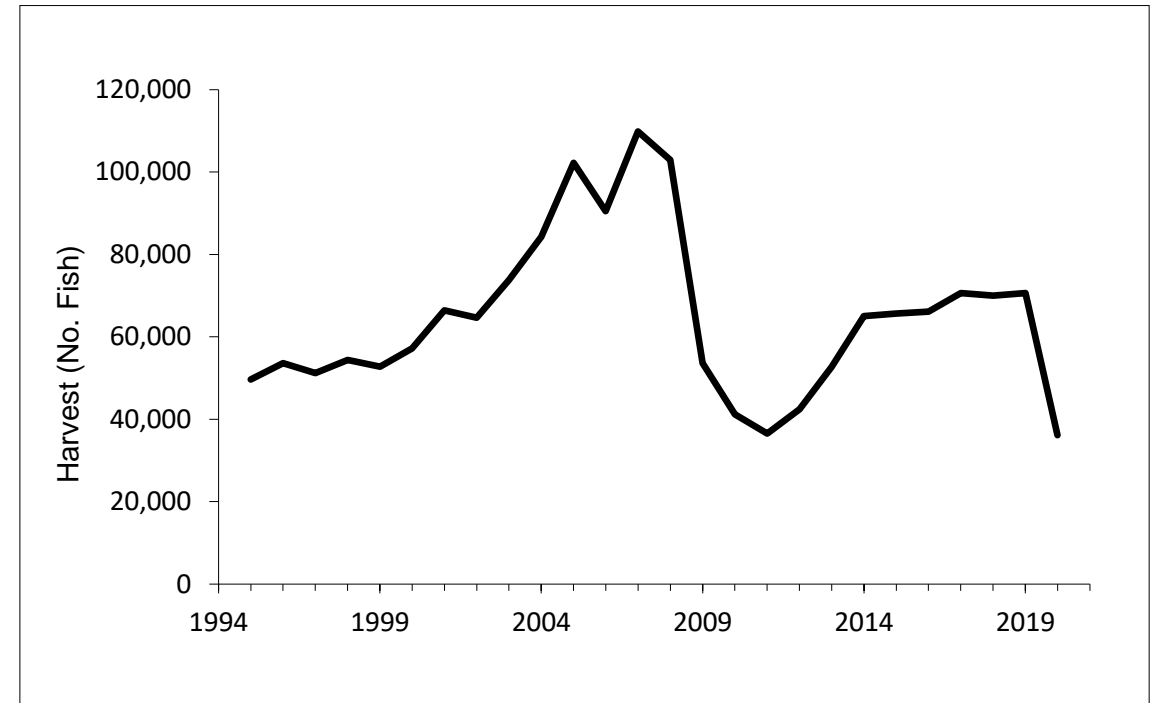
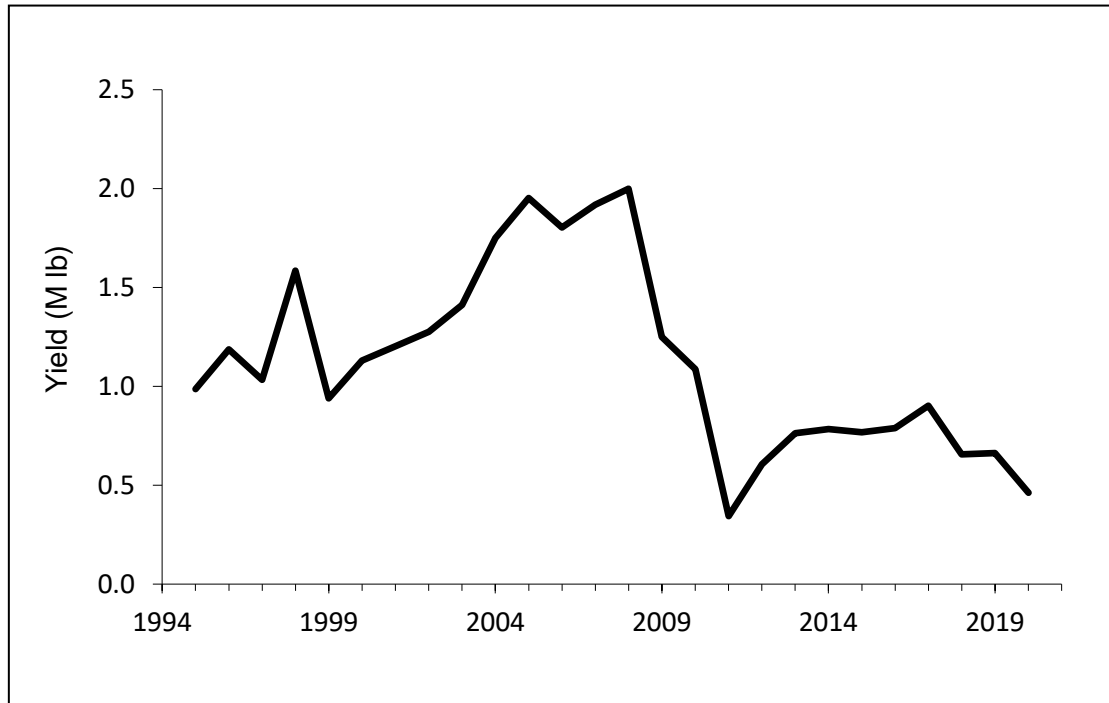
Subarea	Charter (logbook)		
	No. Fish	Avg. Wt.	Yield (Mlb)
Ketchikan	3,507	11.45	0.040
POW Island	9,750	10.09	0.098
PBG/WRG	1,485	19.63	0.029
Sitka	13,848	13.55	0.188
Jun/Haines/Skag	3,490	8.71	0.030
Glacier Bay	4,020	18.70	0.075
<b>Area 2C</b>	<b>36,100</b>	<b>12.77</b>	<b>0.461</b>

From Area2C3A\_Final2020 (Table 1.1)

Removal	Preliminary	Final	Diff (M lb)	ProjErr (%)
Yield	0.477	<b>0.461</b>	0.016	3.4%
Release mortality	0.022	<b>0.022</b>	0.000	-0.5%
Total	0.500	<b>0.483</b>	0.016	3.2%

From Area2C3A\_Final2020 (Table 1.3)

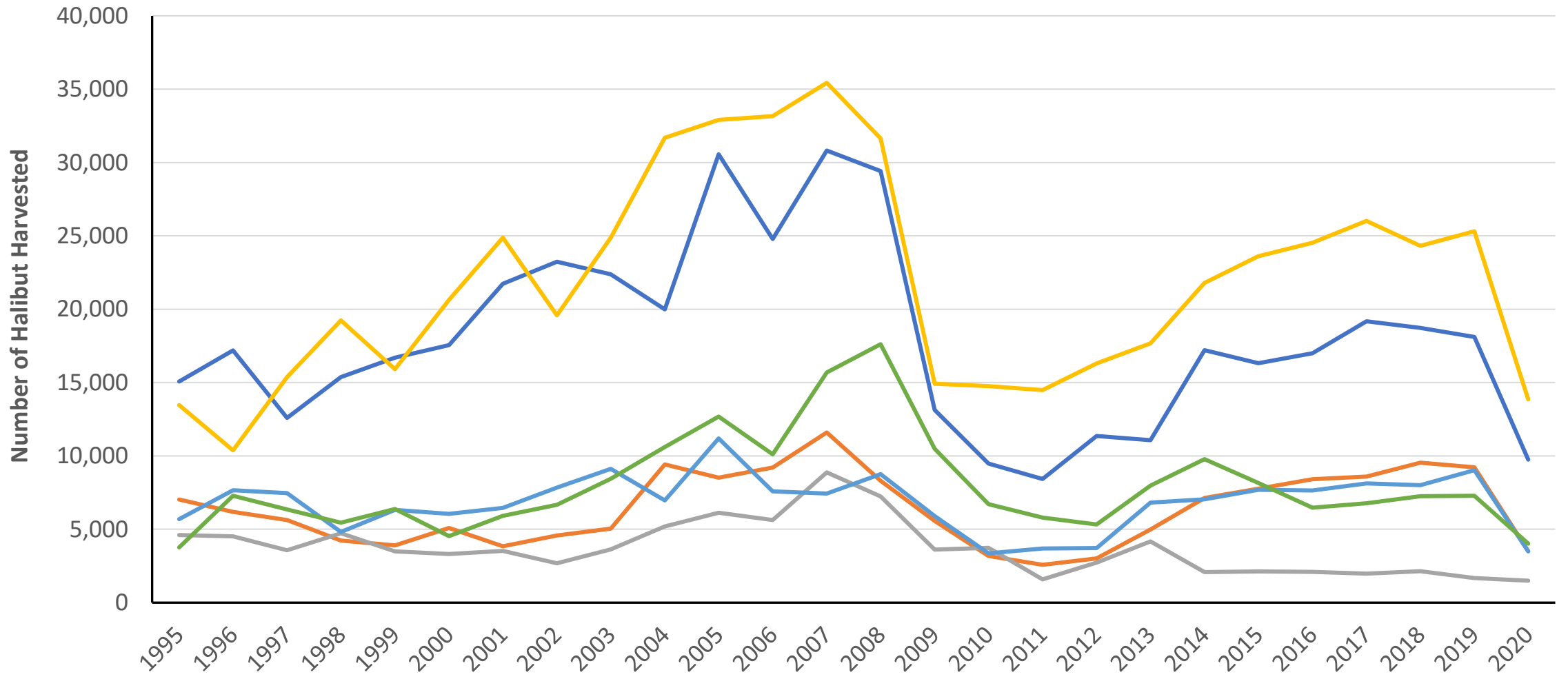
# 2C Charter Halibut Yield and Harvest 1995 – 2020



From Area2C3A\_Final2020 (Figure 1.1)

## 2C Charter Halibut Harvest

Ketchikan Prince of Wales Pburg/Wrangell Sitka Jun/Haines/Skg Glacier Bay



# 3A 2020 Charter Regulations

- Two fish bag limit
  - One fish of any size
  - One fish less than or equal to 26 inches thru June 14
  - One fish less than or equal to 32 inches starting June 15
- Tuesdays and Wednesdays closed to retention of halibut thru June 14
- Four fish annual limit thru June 14
- One trip with halibut harvest per CHP per day
- One trip with halibut harvest per vessel per day



# Final 3A Charter Halibut Estimates for 2020

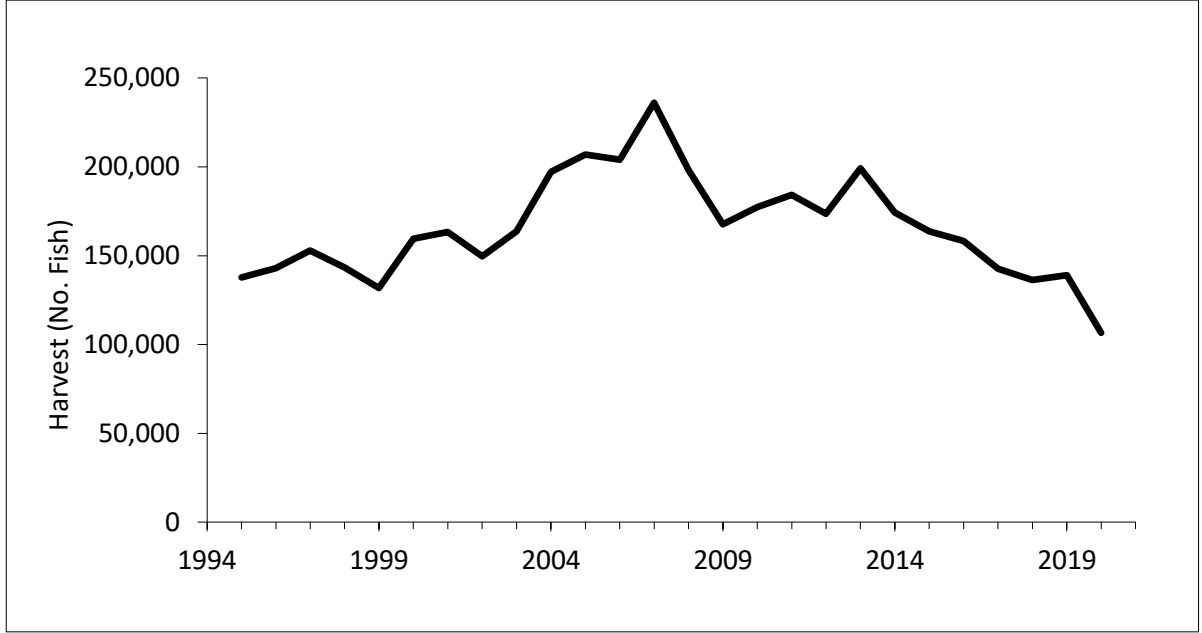
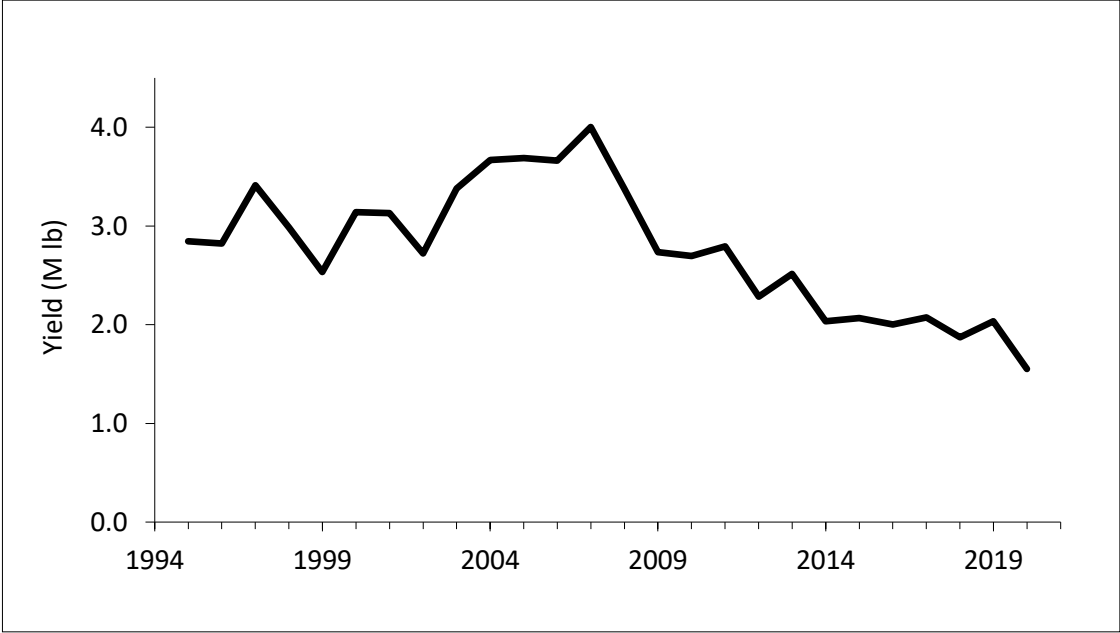
Subarea	Charter		
	No. Fish	Avg. Wt.	Yield (Mlb)
Central Cook Inlet	19,094	13.70	0.261
Lower Cook Inlet	42,299	12.42	0.526
Kodiak	7,180	12.23	0.088
North Gulf Coast	25,078	14.78	0.371
Eastern PWS	4,882	23.55	0.115
Western PWS	4,887	15.81	0.077
Yakutat	2,308	36.59	0.084
Glacier Bay	861	36.59	0.032
<b>Area 3A</b>	<b>106,589</b>	<b>14.58</b>	<b>1.554</b>

From Area2C3A\_Final2020 (Table 2.1)

Removal	Preliminary	Final	Diff (M lb)	ProjErr (%)
Yield	1.583	<b>1.554</b>	0.029	1.8%
Release mortality	0.014	<b>0.013</b>	0.001	4.0%
Total	1.597	<b>1.567</b>	0.030	1.9%

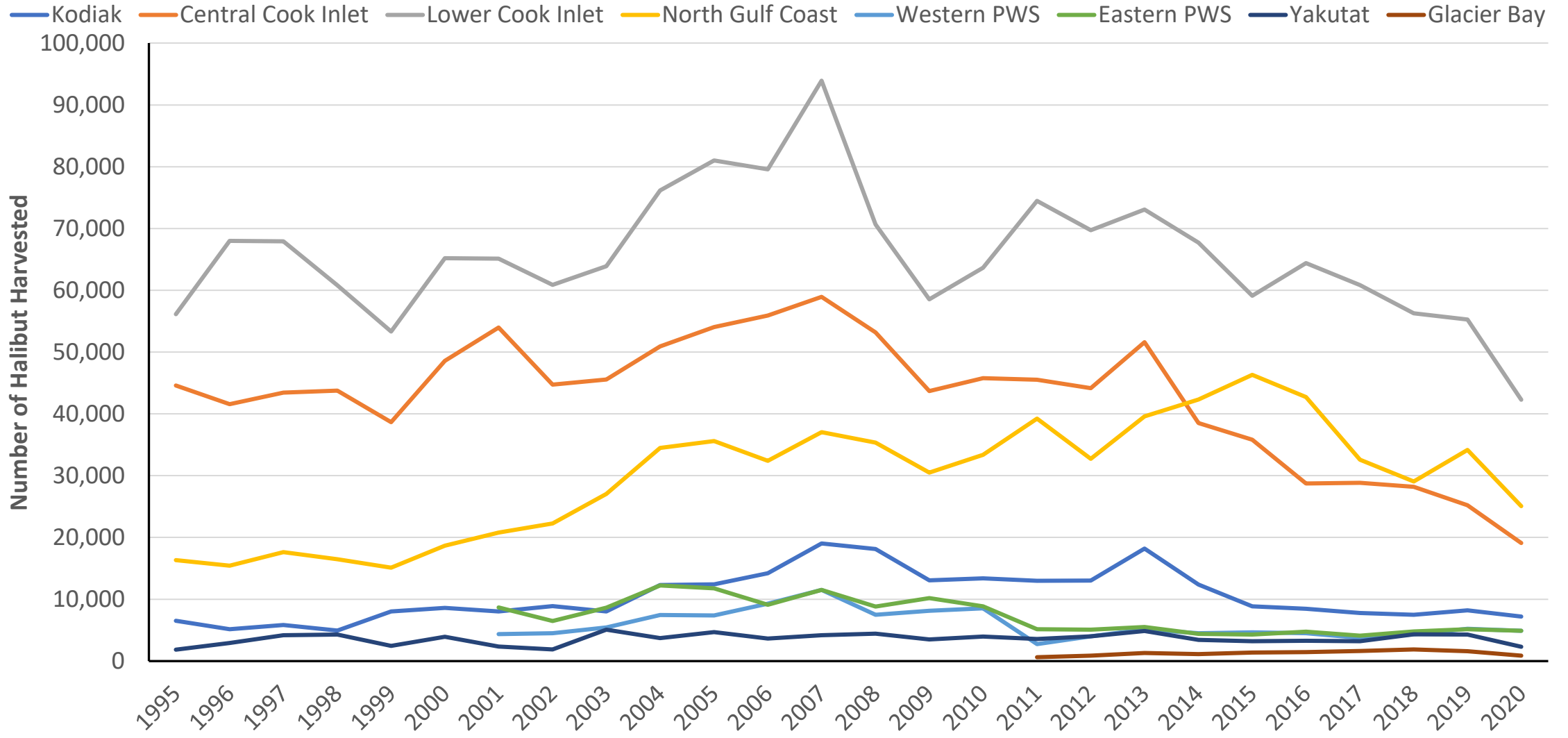
From Area2C3A\_Final2020 (Table 2.3)

# 3A Charter Halibut Yield and Harvest 1995 – 2020



From Area2C3A\_Final2020 (Figure 2.1)

### 3A Charter Halibut Harvest





# Preliminary 2021 Estimates

08.02.2006 15

# 2C 2021 Charter Regulations

- One fish bag limit
- Reverse slot limit:
  - Less than or equal to 50 inches
  - Greater than or equal to 72 inches

# 3A 2021 Charter Regulations

- Two fish bag limit
  - One fish of any size
  - One fish less than or equal to 32 inches
- Wednesdays closed to retention of halibut
- One trip with halibut harvest per CHP per day
- One trip with halibut harvest per vessel per day

# Preliminary 2021 Estimates

Area	Mean	Logbook	Yield (lb)	Release	Total	Allocation (lb)	Overage (lb)	Overage %
	wt (lb)	Harvest		Mortality (lb)	Removals (lb)			
2C	14.48	77,287	1,119,442	34,737	1,154,179	810,000	344,179	42.5%
3A	13.23	184,160	2,436,779	17,622	2,454,401	1,950,000	504,401	25.9%

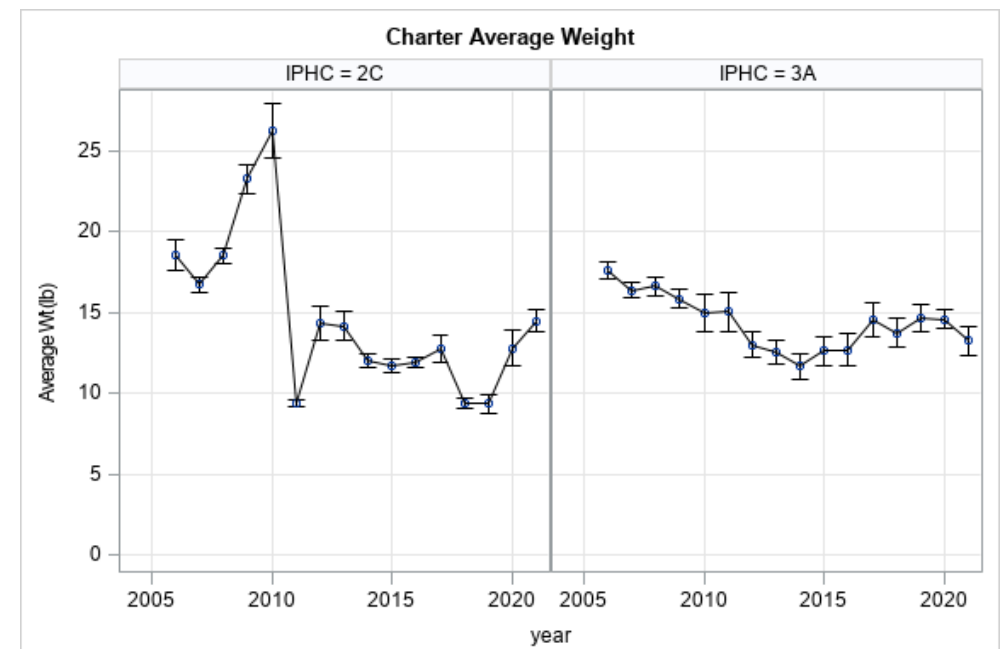
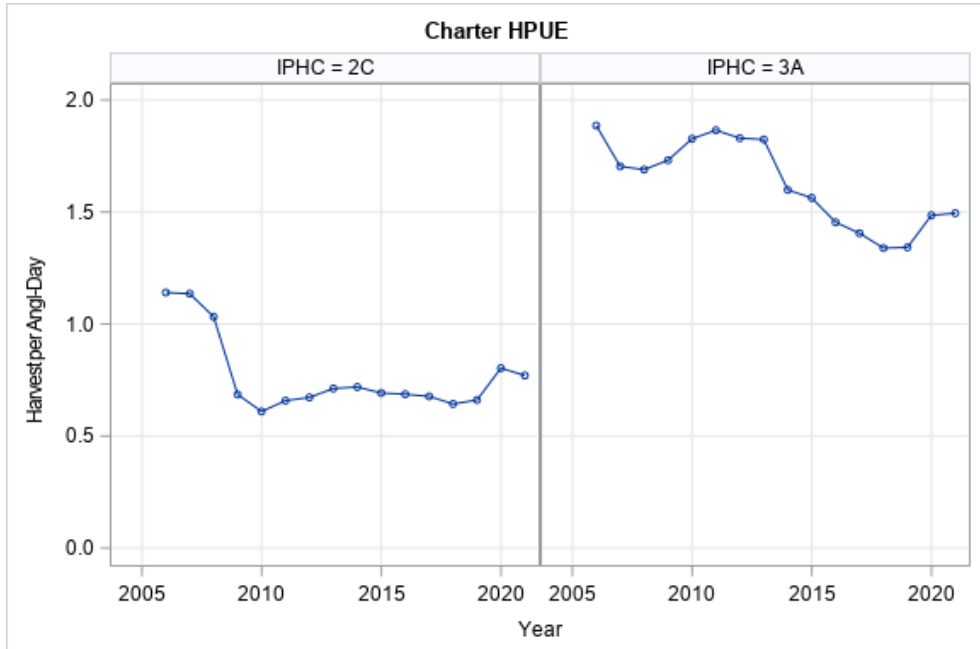
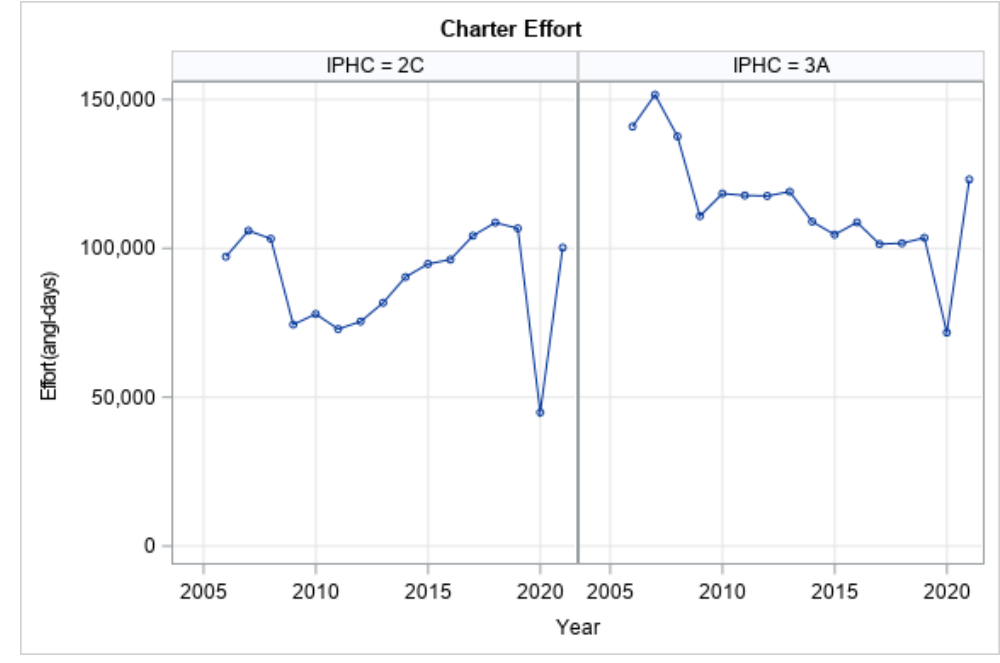
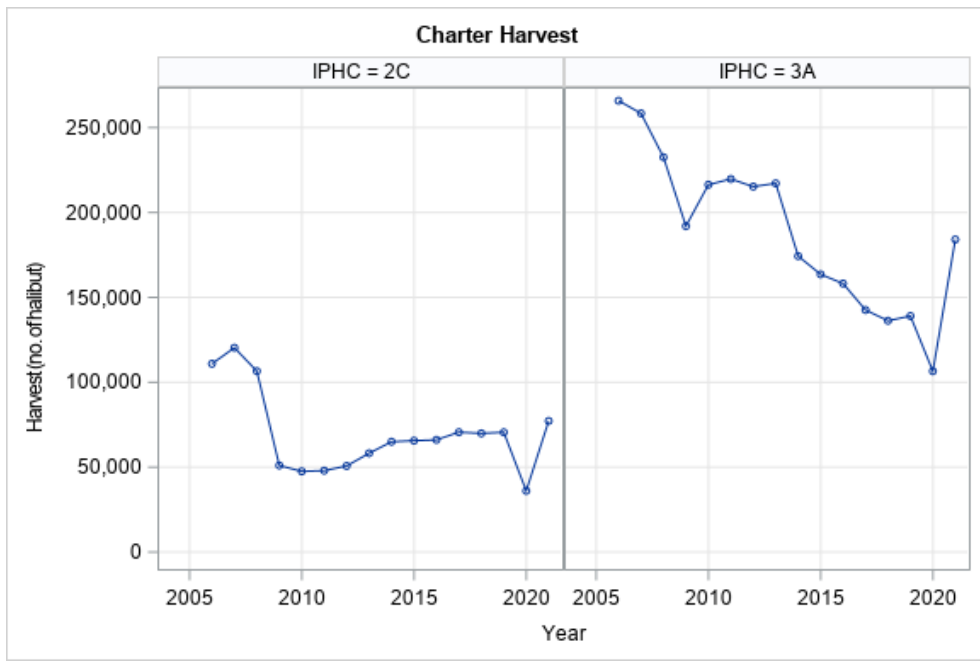
From InfoHandoutADF&G\_2021 (Table 1)

# Comparison of Projection to Preliminary Harvest Estimate

Area	Component	Projection	Projection	Preliminary
		Dec 2020	with COVID Buffer	Oct 2021
2C	Harvest (no. fish)	79,087	51,407	77,287
	Average wt (lb)	14.76	14.76	14.48
	Yield (Mlb)	1.168	0.759	1.119
	Release mortality (Mlb)	0.041	0.027	0.035
	Total removals (Mlb)	1.209	0.786	1.154
3A	Harvest (no. fish)	172,845	129,634	184,160
	Average wt (lb)	14.09	14.09	13.23
	Yield (Mlb)	2.436	1.827	2.437
	Release mortality (Mlb)	0.033	0.025	0.018
	Total removals (Mlb)	2.470	1.852	2.454

From InfoHandoutADF&G\_2021 (Table 2)





From InfoHandoutADF&G 2021 (Figure 2)

# Acknowledgements

---

- Bob Powers, Ben Jevons – logbook data
- Diana Tersteeg, Mike Jaenicke – Southeast data
- Martin Schuster, Marian Ford – Southcentral data
- Mike Martz, Jonathan Kirsch– SWHS
- Jim Hasbrouck – Chief Fisheries Scientist
- Sarah Marrinan– NPFMC staff
- Numerous technicians – halibut measurements and angler interviews
- Cooperating anglers and charter operators
  
- Funding:  
State of Alaska General Funds  
DJ-WB Federal Aid in Fish Restoration  
Fish & Game Funds



Photo: Crackerjack Charters

# Questions

Sarah Webster

Alaska Department of Fish and Game –  
Division of Sport Fish

Research and Technical Services –  
Anchorage

[sarah.webster@alaska.gov](mailto:sarah.webster@alaska.gov)

907-267-2212





Extra Slides



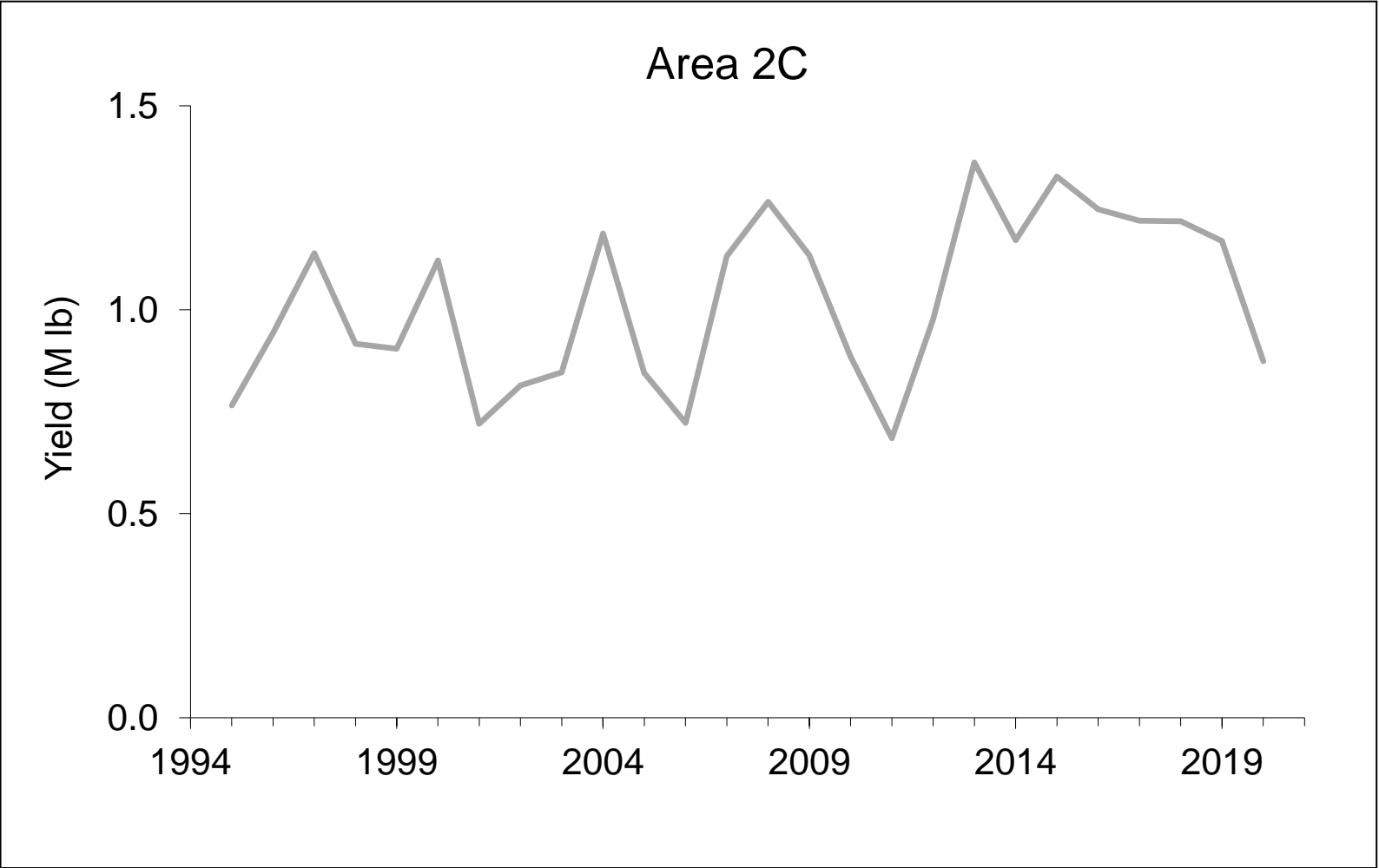
## 2C Final 2020 Unguided Harvest, Mean Weight, and Yield

Subarea	Unguided (SWHS)		
	No. Fish	Avg. Wt.	Yield (Mlb)
Ketchikan	7,819	14.90	0.117
POW Island	8,296	19.61	0.163
PBG/WRG	8,824	19.47	0.172
Sitka	4,066	16.23	0.066
Jun/Haines/Skag	9,165	13.05	0.120
Glacier Bay	9,201	25.73	0.237
<b>Area 2C</b>	<b>47,371</b>	<b>18.44</b>	<b>0.873</b>

From Table 1.1 in 2C3AFinal\_2020



# Area 2C Unguided Yield 1995 – 2020



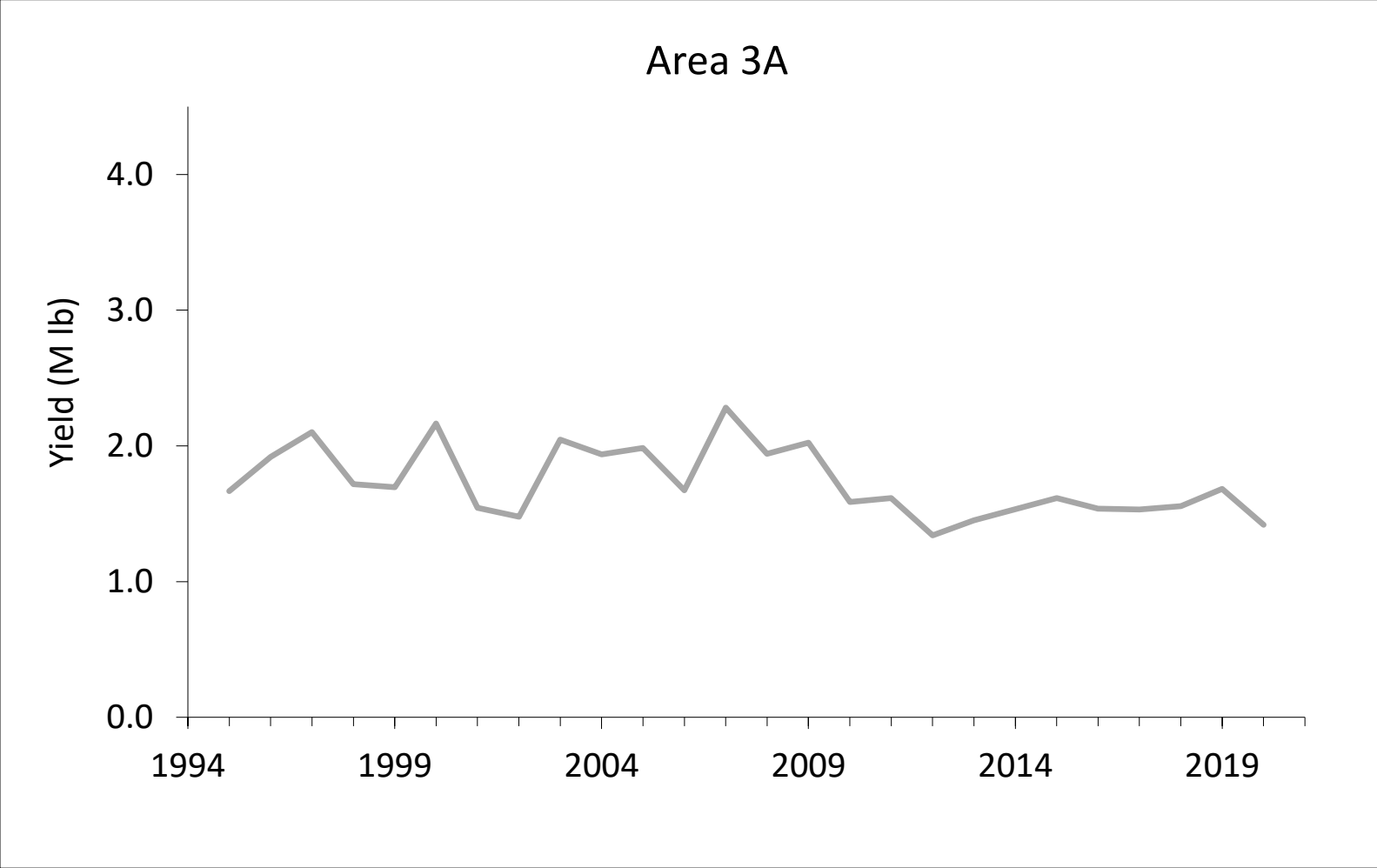
From Figure 1.1 in 2C3AFinal\_2020

## 3A Final 2020 Unguided Harvest, Mean Weight, and Yield

Subarea	Unguided		
	No. Fish	Avg. Wt.	Yield (Mlb)
Central Cook Inlet	22,036	13.76	0.303
Lower Cook Inlet	33,318	11.79	0.393
Kodiak	6,494	18.40	0.120
North Gulf Coast	9,300	18.79	0.175
Eastern PWS	8,295	23.49	0.195
Western PWS	10,049	20.08	0.202
Yakutat	1,274	24.35	0.031
<b>Area 3A</b>	<b>90,766</b>	<b>15.62</b>	<b>1.418</b>

From Table 2.1 in 2C3AFinal\_2020

# Area 3A Unguided Yield 1995 - 2020



From Figure 2.1 in 2C3AFinal\_2020