



Bering Sea Fishery Ecosystem Plan

Report for Sept GPT meeting

BS FEP Team (May -Sep 2021)



Overview - FEP team annual meeting May 24-25, 2021

- Updates from Local Knowledge, Traditional Knowledge, and Subsistence Task Force and Climate Change Task Force
- Clarity about various ecosystem reports
- Bering Sea Ecosystem Health Report

Taskforce updates

LKTKS

- Co-chairs: Kate Haapala and Sarah Wise
- Develop processes to enhance use of local knowledge, traditional knowledge, and subsistence information in Council management.
- Added a new onramp to consider how to provide input to annual processes such as the ESR.

CCTF

- Co-chairs: Diana Stram and Kirstin Holsman
- Develop tactical and strategic work products for Council to allow for climate-informed fisheries management.
- Product: Climate Fishery Impacts and Adaptation Report: The first section of that is targeted for fall of 2021, to describe the Council's current state of climate readiness; the remainder of the report will be prepared for 2023, and will assess adaptation tools, key risks, gaps, tipping points, and limits to adaptation.

Description of reports/ products

ESR - Ecosystem Status Report; annual report of LME-level ecosystem data relevant for setting harvest specifications. *CCTF aims to include climate data as relevant.*

ESR in brief – 4-page summary of the ESR and how ecosystem info was used in specifications process.

ESP - Ecosystem and Socio-economic Profiles; pulls ecosystem (and other) data of particular relevance to an individual species or species complex. Scheduled expansion to new stocks over time; annually updated with new data, redesigned periodically. *CCTF aims to include climate data as relevant.*

Risk tables within the SAFE reports – captures summary of risk within each stock assessment; one column dedicated to ecosystem information summarized from ESR and ESP

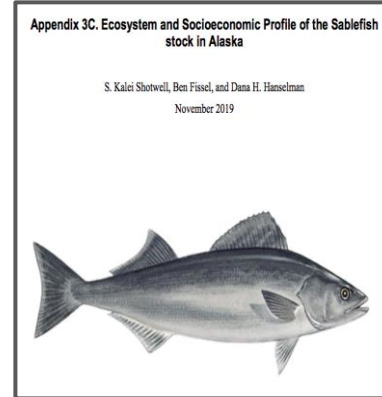
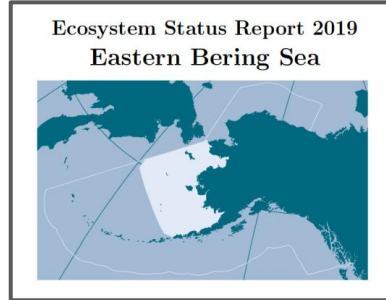
FEP – Fishery Ecosystem Plans for the Aleutian Islands and the Bering Sea; for the AI, describes ecosystem interactions and a risk assessment; for the BS, specifies ecosystem goals and objectives, and describes current EBFM practices






BSEHR / Health report - Under development. Strategic report to evaluate how Council is succeeding at ecosystem goals and objectives identified in the BS FEP. Updated every 2-3 yrs. *CCTF aims to include climate data as relevant.*

CR / Climate report – Climate Fishery Impacts and Adaptation Report; product of the CCTF; assessment of resilience of Council management with respect to changing climate, including current state of climate readiness, key risks, gaps, tipping points, and limits to adaptation.

PEEC – activity to Preview Ecosystem and Economic Conditions; preliminary information to inform ESRs, ESPs

Distinguishing ESR, ESP, BSEHR

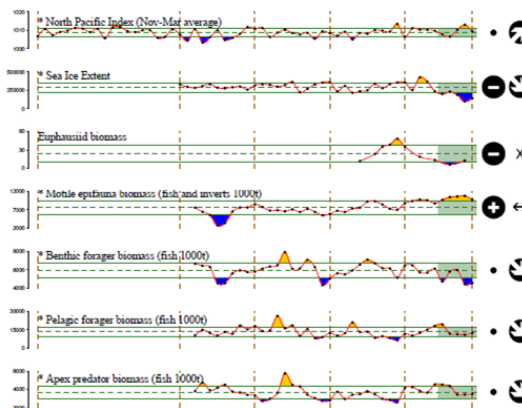


		Ecosystem Status Report	Ecosystem and Socio-economic Profile	Bering Sea Ecosystem Health Report
Purpose	 	Tactical - harvest specs* <i>* in past, this was the single catch-all report for all ecosystem considerations data</i>	Tactical - harvest specs	Strategic – is Council achieving ecosystem goals
When issued		Oct-Dec	Oct-Dec (partial or full)	April (bi- or triennially)
Scope		Aggregated - Indicators that pertain to many stocks at once	Species/Stock-specific – indicators that have an impact on this specific stock	Aggregated - Synthesizing across ecosystem area /activities
Spatial		Large Marine Ecosystem (EBS, GOA, AI)	Large Marine Ecosystem/ FMP (EBS, GOA, AI)	LME -- Basin-scale

Ecosystem Status Report 2019 Eastern Bering Sea



Bering Sea Ecosystem Health Report



- Cumulative, multi-species effects
- Informs management strategy, not tactical management decisions
- Diversity of audiences
- Monitors success of EBFM management actions (progress towards goals and objectives)
- **Progress: Currently initial scoping of indicators under FEP objectives**
- **Draft developed Jan-Mar 2022**