

Notes: 78 trawl licenses were issued for the Western GOA and 97 were issued for the Central GOA. The total number of licenses in each figure represent these totals

Figure 8: Percentage of the available CG Pacific cod TAC allocated to Inshore (CV) LLP licenses by ti

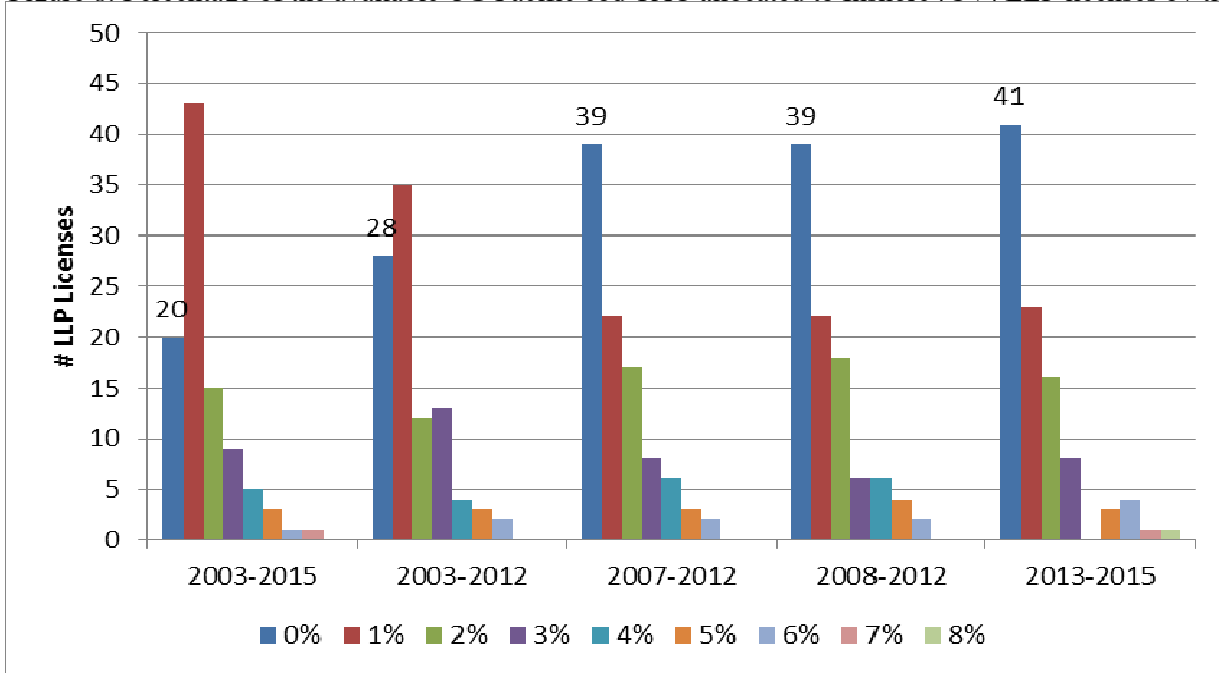


Figure 9: Percentage of the available WG Pacific cod TAC allocated to Inshore (CV) LLP licenses by ti

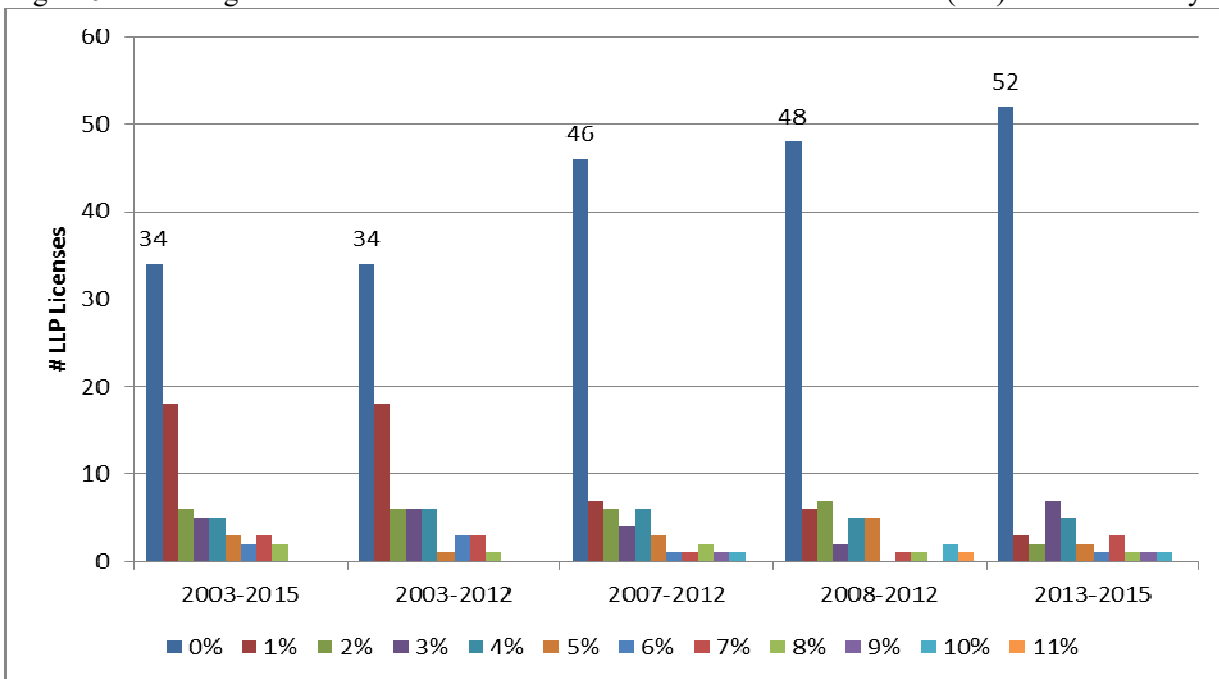
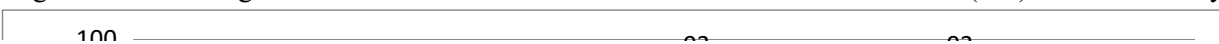


Figure 10: Percentage of the available WYK Rockfish TACs allocated to Inshore (CV) LLP licenses by



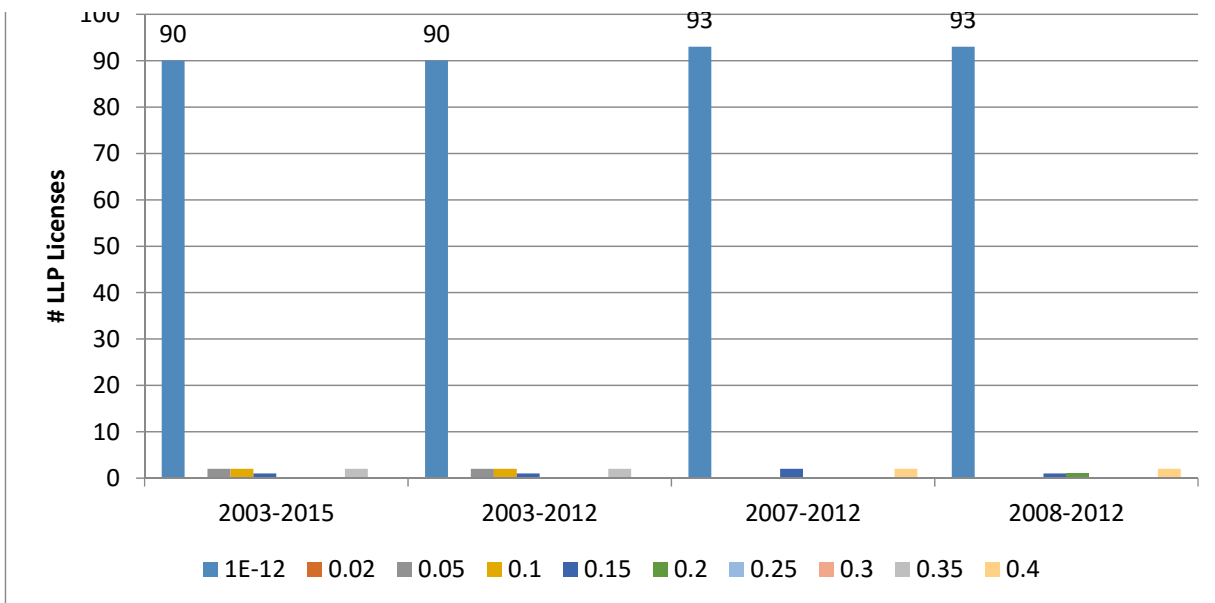


Figure 11: Percentage of the available 610 Pollock TAC allocated to Inshore (CV) LLP licenses by time

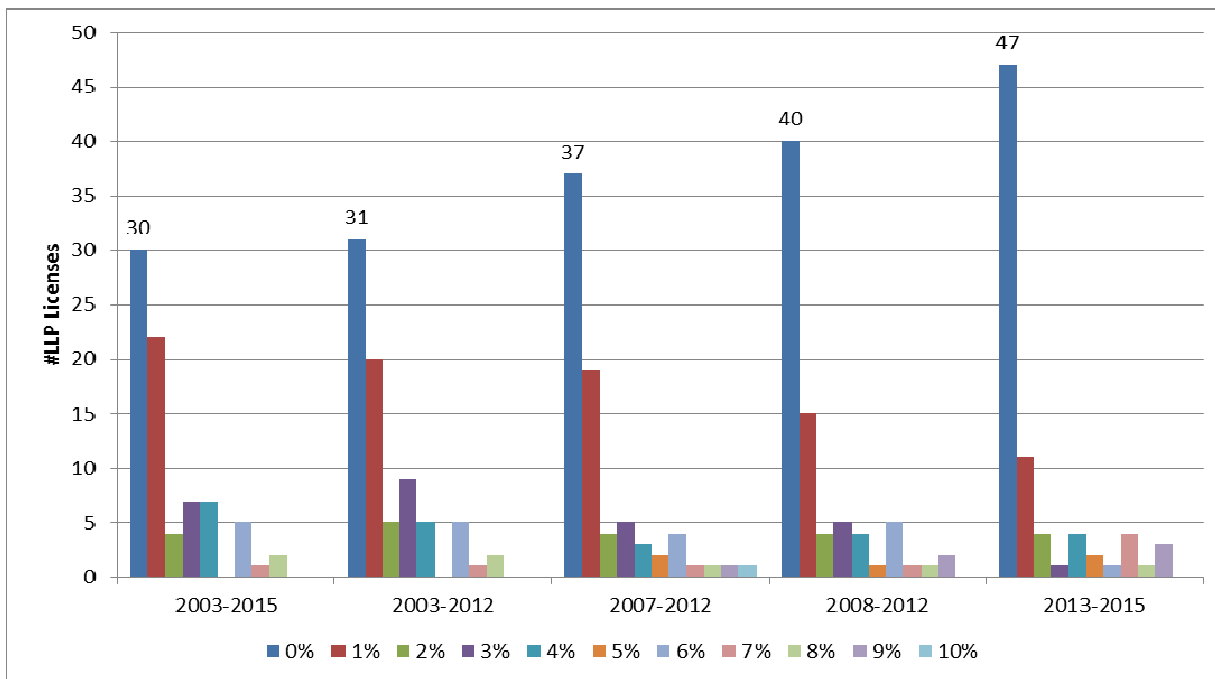
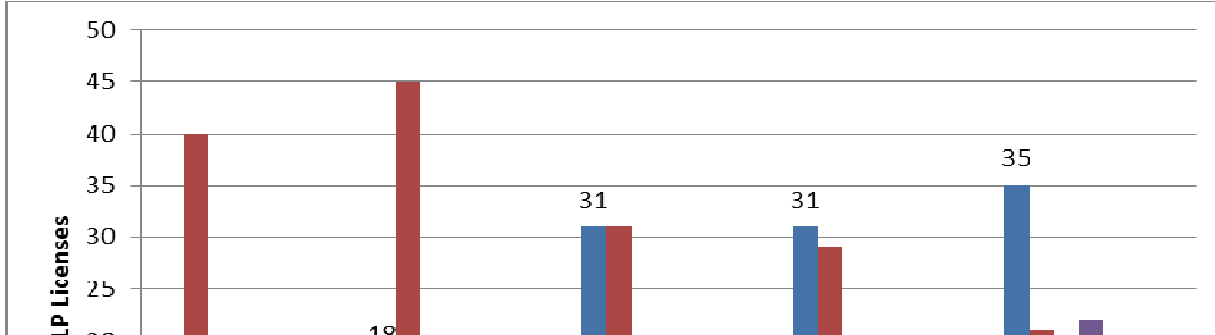


Figure 12: Percentage of the available 620 Pollock TAC allocated to Inshore (CV) LLP licenses by time



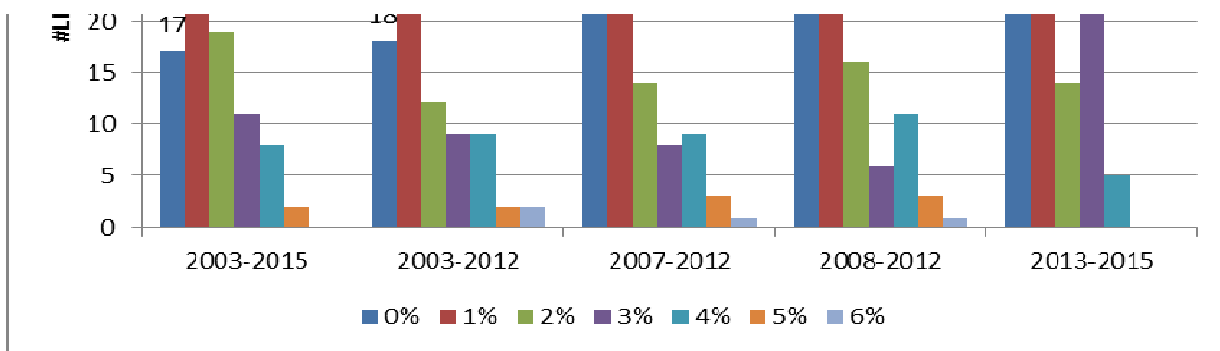


Figure 13: Percentage of the available 630 Pollock TAC allocated to Inshore (CV) LLP licenses by time

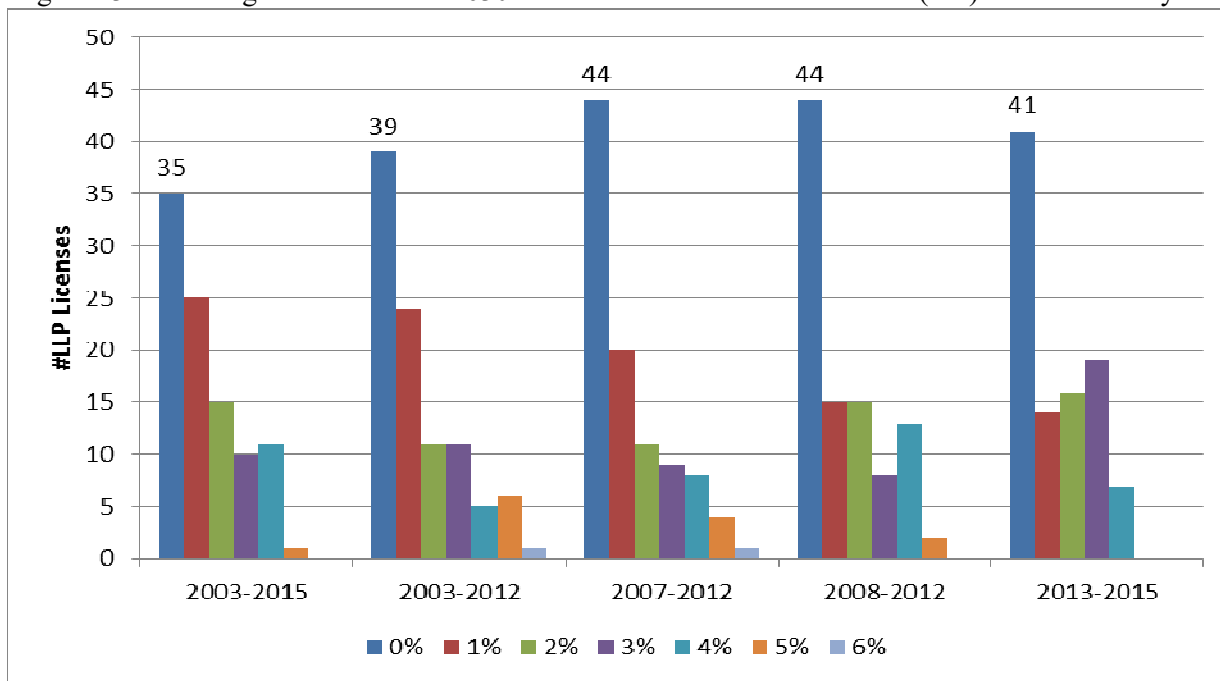
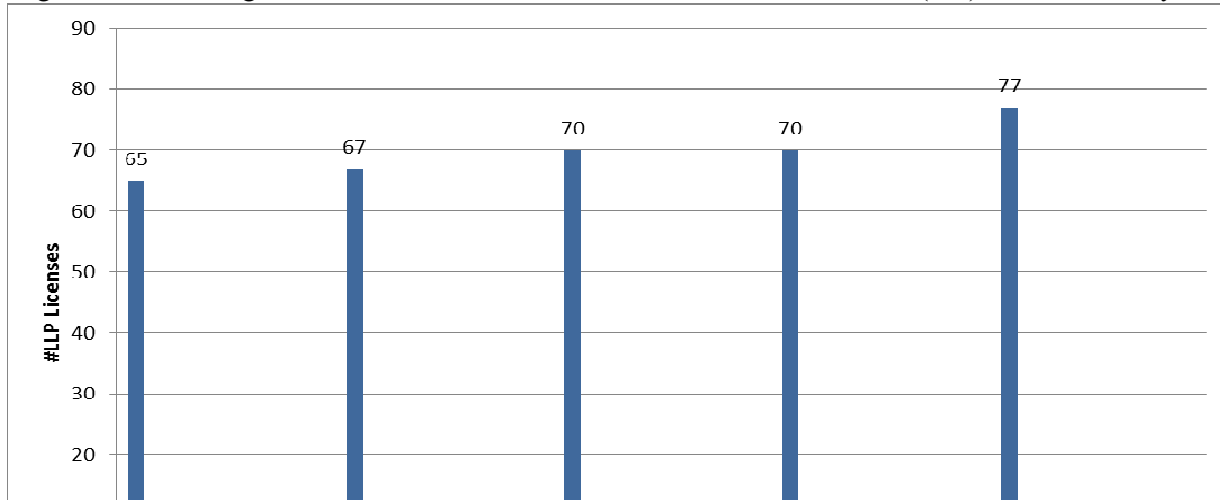
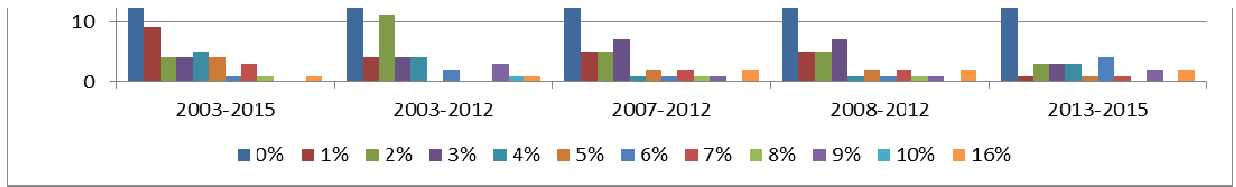


Figure 14: Percentage of the available 640 Pollock TAC allocated to Inshore (CV) LLP licenses by time





ne period



me period



time period

period

period

: period



: period



