



# **IFQ Report to the Fleet**

APRIL 2023  
NPFMC

## Table of Contents

1	<i>Introduction</i> .....	2
1.1	IFQ Regulatory Changes .....	2
1.2	Contacts.....	3
2	<i>IFQ Harvest</i> .....	3
2.1	Allocations and landings for halibut .....	3
2.2	Allocations and landings for sablefish.....	4
2.3	Hired Skipper Activity.....	5
2.4	Registered Buyers and Landings .....	7
3	<i>Program by the Numbers</i> .....	8
3.1	Quota Shares held by Initial Issues .....	8
3.2	Medical Transfers .....	9
3.3	Non-Medical Temporary Transfers .....	9
3.4	Community Quota Entity Activity.....	10
3.5	Quota Share held by Community.....	11
4	<i>Appendix</i> .....	12
4.1	Halibut IFQ TAC and Landings .....	12
4.2	Sablefish IFQ TAC and Landings .....	14
4.3	Halibut IFQ Landings by Hired Skipper (HS) .....	16
4.4	Sablefish IFQ Landings by Hired Skipper (HS).....	18
4.5	Halibut Initial Issues Holdings .....	20
4.6	Sablefish Initial Issues Holdings .....	22
4.7	Halibut QS by Owner Residence (millions of QS).....	23
4.8	Sablefish QS by Owner Residence (millions of QS).....	25
5	<i>Preparers and Person Consulted</i> .....	27

# 1 Introduction

Information regarding the background, history and administration for the Pacific halibut and Sablefish Individual Fishing Quota (IFQ) Program is available on the NOAA Fisheries Alaska Region website at <https://www.fisheries.noaa.gov/alaska/sustainable-fisheries/pacific-halibut-and-sablefish-individual-fishing-quota-ifq-program>.

## 1.1 IFQ Regulatory Changes

A complete list of regulatory amendments modifying the IFQ Program is available on NOAA Fisheries Alaska Region website at: <https://www.fisheries.noaa.gov/action/individual-fishing-quota-ifq-program-alaska-federal-register-rules-and-notice-2004-present>. Rules affecting the IFQ Program that became effective in 2022 are summarized below.

**Halibut Annual Management Measures:** Effective February 18, 2022, the Assistant Administrator for Fisheries, NOAA, on behalf of the International Pacific Halibut Commission (IPHC), published as regulations the 2022 annual management measures governing the Pacific halibut fishery that have been recommended by the IPHC and accepted by the Secretary of State (87 FR 12604, March 7, 2022)<sup>1</sup>. The IPHC considered advice from the IPHC's two advisory boards when selecting opening and closing dates for the halibut fishery. The opening date for all IPHC regulatory areas was March 6, 2022, and the closing date for the halibut fisheries in all regulatory areas was December 7, 2022.

**Temporary Rule: Vessel Use Caps.** Effective June 6, 2022, NOAA Fisheries removed vessel use caps in IFQ regulatory Areas 4A (Eastern Aleutian Islands), 4B (Central and Western Aleutian Islands), 4C (Central Bering Sea), and 4D (Eastern Bering Sea) for the 2022 IFQ fishing year (87 FR 34215,

<sup>1</sup> <https://www.federalregister.gov/documents/2022/03/07/2022-04639/pacific-halibut-fisheries-catch-sharing-plan-2022-annual-management-measures>.

06/06/2022). This action was needed to provide additional flexibility to IFQ participants in 2022 to ensure allocations of halibut IFQ can be harvested by the limited number of vessels operating in these areas.

## 1.2 Contacts

For information or questions about regulations and the rulemaking process, please contact the Sustainable Fisheries Division at 907-586-7228

For questions about permits or transfer applications, please contact Restricted Access Management Program (RAM) at (800) 304-846 option #2 or (907) 586-7474 or by email at RAM.Alaska@noaa.gov.

## 2 IFQ Harvest

### 2.1 Allocations and landings for halibut

The following table and figures represent the participation and harvest for halibut IFQ. The data tables by area have been moved to the appendix of the document and include 2013-2022. The number of vessels and permits active increased for halibut but still showed a decline for sablefish. The percent of TAC harvested for halibut IFQ in 4B reached the lowest amount of any area recorded at 49.9%. The overall percent of TAC harvested was also the lowest recorded at 79.4%. Participation of both vessels and permit holders increased slightly in 2022. The total harvest increased in both 2021 and 2022.

Table 2.1 Total Halibut IFQ Landings and Participation 2018-2022

Area	Total Harvest	TAC	%Harvested	Vessels	Permits
2022	17,573,383	20,297,912	79.4%	732	1891
2021	17,253,108	18,569,500	87.8%	729	1725
2020	15,003,309	16,079,152	90.3%	746	1751
2019	16,481,748	17,709,979	87.8%	806	2092
2018	15,871,932	16,630,218	93.9%	810	2143

Source: NMFS Restricted Access Management (RAM) division sourced through AKFIN

Figure 2.10 Percent of Halibut IFQ TAC Landed by Area 2013-2022

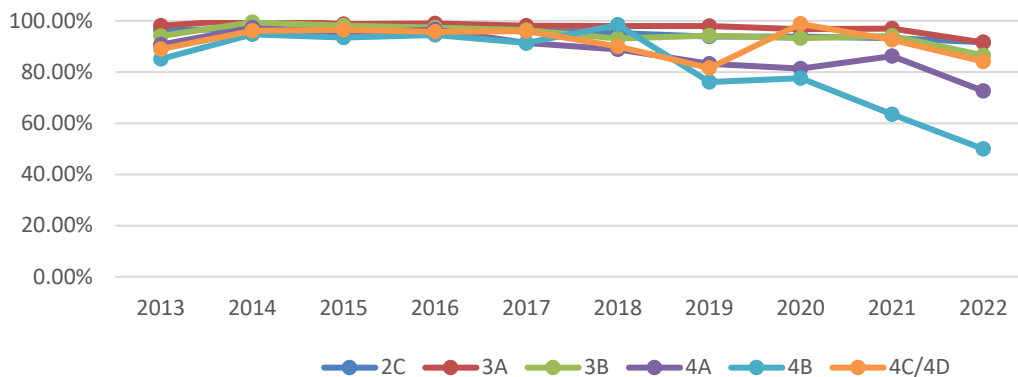


Figure 2.12 Number of Vessels Landing Halibut IFQ by Area 2013-2022

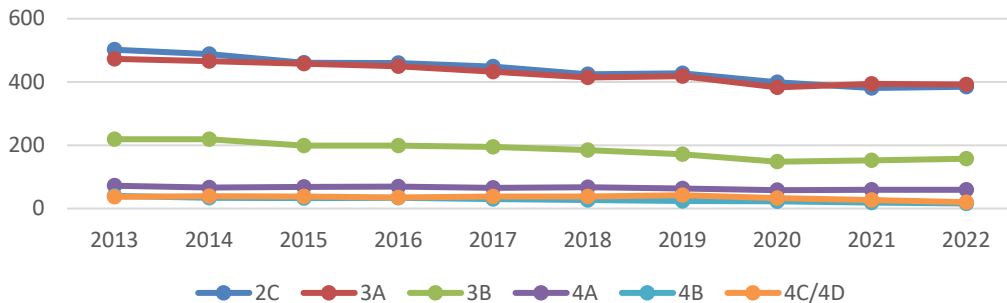
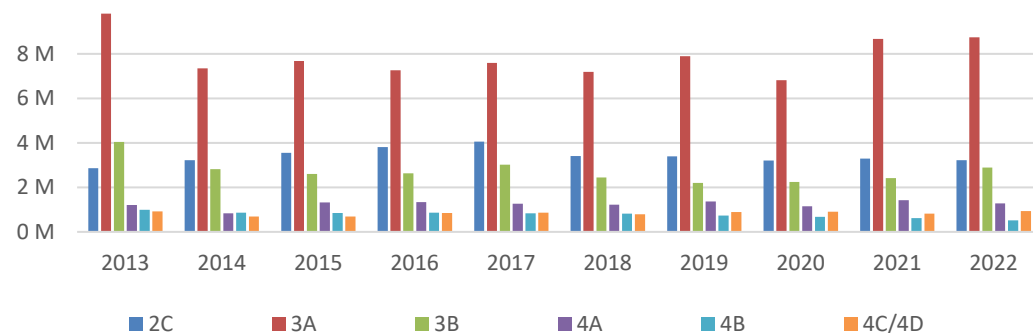


Figure 2.13 Total Halibut IFQ Landed by Area 2013-2022



## 2.2 Allocations and landings for sablefish

The following table and figures represent the participation and harvest for sablefish IFQ. The data tables by area have been moved to the appendix of the document and include 2013-2022. The percent of sablefish TAC harvested in the AI reached the lowest point for any area on record at 14.7%. The percent of overall sablefish harvested increased to 74.4%. Vessels and permits participating increased in 2021 and 2022. The total harvest of sablefish reached the highest amount since 1995.

Table 2.2 Total Sablefish IFQ Landings and Participation 2018-2022

Area	Total Harvest	TAC	%Harvested	Vessels	Permits
2022	42,108,671	56,401,864	74.4%	273	685
2021	32,715,915	43,444,034	72.6%	271	625
2020	22,736,966	31,707,405	66.3%	266	599
2019	21,550,802	25,967,982	75.6%	280	730
2018	20,801,226	25,800,433	72.7%	295	751

Source: NMFS Restricted Access Management (RAM) division sourced through AKFIN

Figure 2.20 Percent of Sablefish IFQ TAC Landed by Area 2013-2022

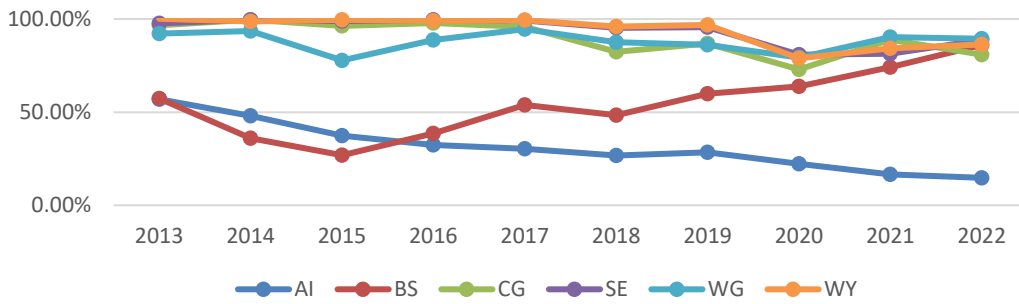


Figure 2.21 Number of Vessels Landing Sablefish IFQ by Area 2013-2022

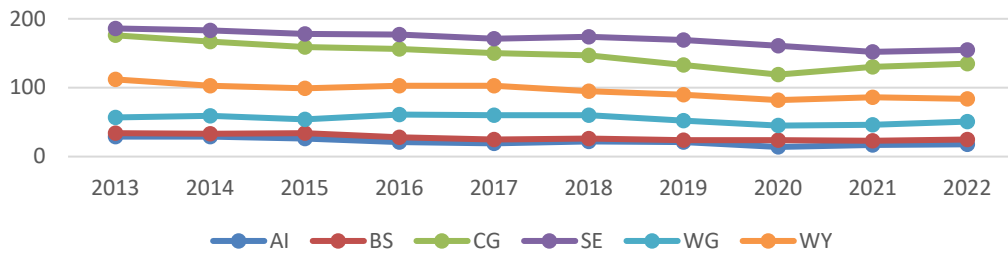
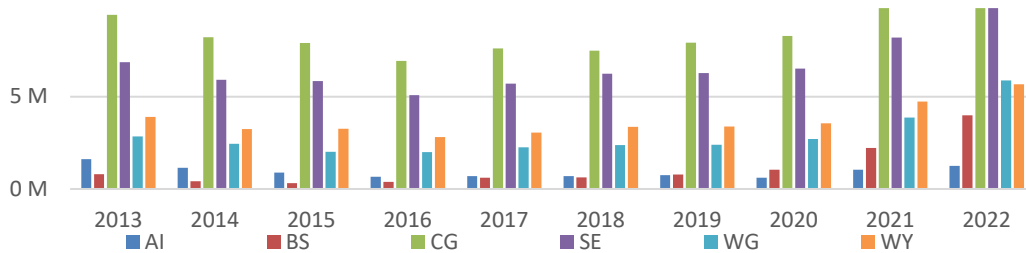


Figure 2.22 Total Sablefish IFQ Landed by Area 2013-2022



### 2.3 Hired Skipper Activity

The below tables and figures represent the number of hired skippers (HS) and the landings by hired skippers compared to the total number of landings. The amounts are held by individuals or corporations in the vessel categories B, C or D. The percent of landings by hired skippers continues to show a downward trend as does the number of hired skippers active. Data tables that present hired skipper activity by area are available in the Appendix.

Table 2.30 Total Halibut Hired Skipper Activity (HS) 2018-2022

	Landings	Landings by HS	% HS	HS Delivering	HS with QS
2022	17,054,052	4,505,656	26.4%	151	100
2021	16,743,437	4,380,905	26.2%	149	102
2020	14,548,488	4,014,817	27.6%	162	117
2019	15,969,513	4,643,240	29.1%	178	109
2018	15,379,833	4,687,774	30.5%	186	107

Source: NMFS Restricted Access Management (RAM) division sourced through AKFIN

Figure 2.30 Percent of Halibut IFQ Fished by Hired Skipper (HS) 2013-2022

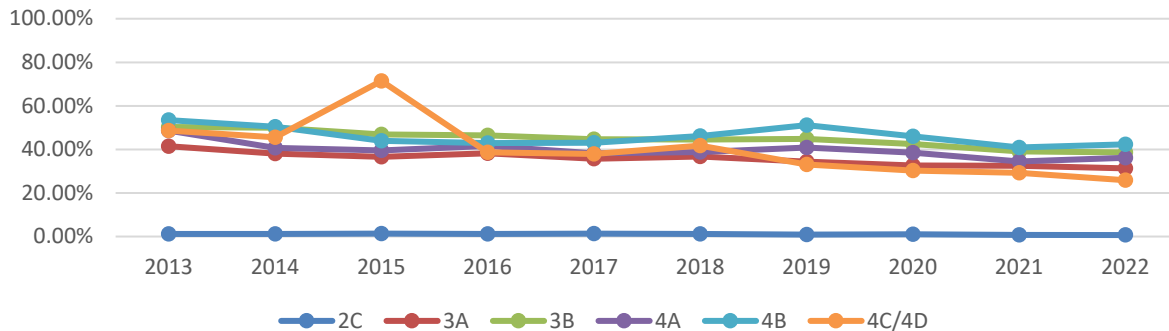


Figure 2.31 Halibut IFQ Landings by Hired Skipper (HS) 2013-2022

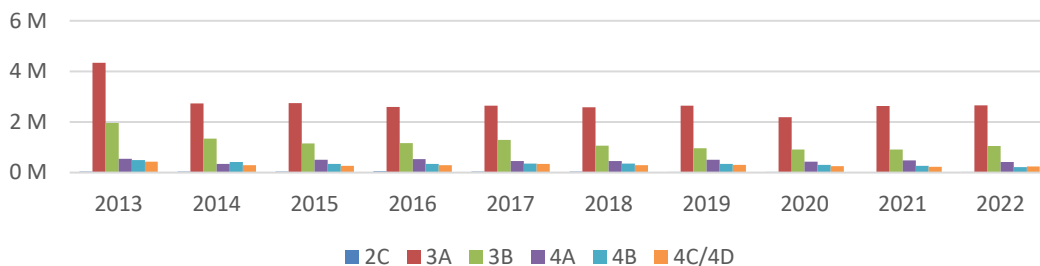


Table 2.31 Total Sablefish IFQ by Hired Skipper (HS) 2018-2022

	Landings	Landings by HS	% HS	HS Delivering	HS with QS
2022	33,334,712	11,350,330	34.0%	94	55
2021	26,349,396	9,146,559	34.7%	101	69
2020	18,296,041	6,866,576	37.5%	99	62
2019	17,592,651	6,414,921	36.5%	104	53
2018	16,999,047	6,300,483	37.1%	108	56

Source: NMFS Restricted Access Management (RAM) division sourced through AKFIN

Figure 2.32 Percent of Eligible Sablefish IFQ Fished by Hired Skipper (HS) 2013-2022

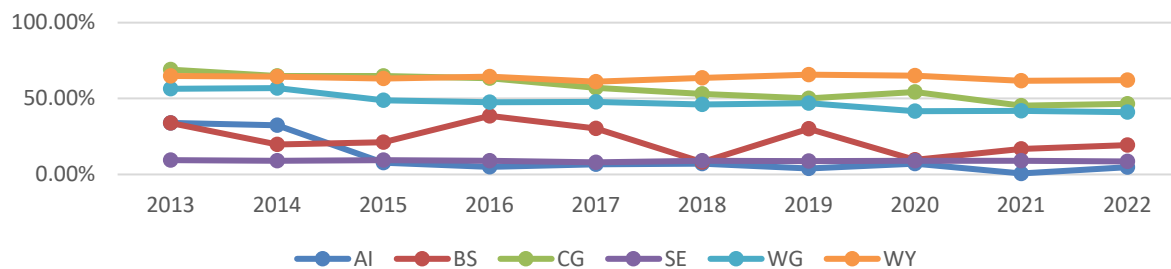
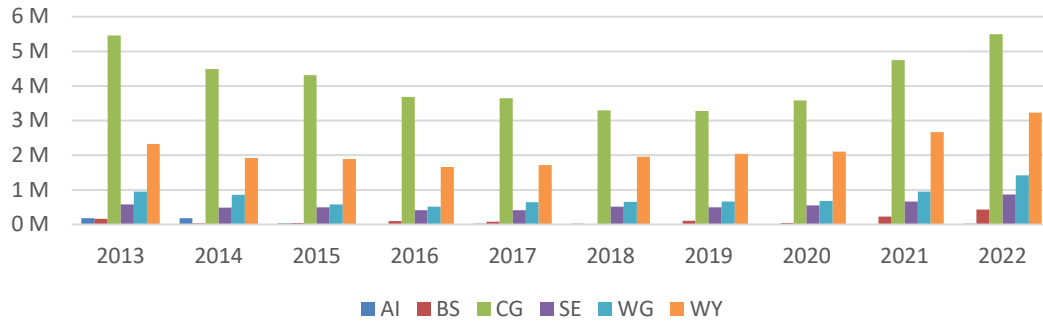


Figure 2.33 Sablefish IFQ Landings by Hired Skipper (HS) 2013-2022



## 2.4 Registered Buyers and Landings

The number of registered buyers and the number of active buyers is presented in the below table for 2018-2022. Registered buyers are able to hold multiple permits however multiple permits are not listed on the bought IFQ potentially causing some of the difference between registered buyers and active buyers. The downward trend in buyers was reversed in 2022. Active shore-based processors of both halibut and sablefish increased to levels last seen in 2019.

Table 2.4 Registered Buyers Halibut and Sablefish IFQ

	Buyers	Active Buyers	HIbt Buyers	Sabl Buyers
<b>2022</b>	<b>230</b>	<b>98</b>	<b>89</b>	<b>54</b>
Buyer-Broker	76	36	35	18
Catcher-Processor	27	12	5	8
Catcher-Seller	60	13	13	2
Mothership	2	2	2	1
Other	12	5	4	1
Retail	10	3	3	1
Shoreplant	41	27	27	23
Tender	2	0	0	0
<b>2021</b>	<b>218</b>	<b>87</b>	<b>77</b>	<b>49</b>
Buyer-Broker	77	37	35	17
Catcher-Processor	27	12	5	9
Catcher-Seller	53	15	15	3
Mothership	2	1	1	1
Other	19	5	5	5
Retail	10	2	2	2
Shoreplant	30	15	14	12
<b>2020</b>	<b>223</b>	<b>84</b>	<b>77</b>	<b>51</b>
Buyer-Broker	71	31	30	18
Catcher-Processor	23	9	6	7
Catcher-Seller	53	11	10	1
Mothership	2	0	0	0
Other	20	6	6	3
Retail	7	5	3	3
Shoreplant	43	22	22	19
Tender	4	0	0	0
<b>2019</b>	<b>253</b>	<b>109</b>	<b>100</b>	<b>63</b>
Buyer-Broker	90	37	34	20
Catcher-Processor	27	11	5	8
Catcher-Seller	64	21	21	4
Other	19	7	7	6
Restaurant	1	0	0	0

Retail	8	2	2	0
Shoreplant	41	31	31	25
Tender	3	0	0	0
<b>2018</b>	<b>244</b>	<b>100</b>	<b>91</b>	<b>56</b>
Buyer-Broker	78	33	31	20
Catcher-Processor	30	12	7	7
Catcher-Seller	61	19	18	3
Mothership	1	0	0	0
Other	24	3	3	2
Retail	7	4	4	0
Shoreplant	40	29	28	24
Tender	3	0	0	0

Source: NMFS Restricted Access Management (RAM) division sourced through AKFIN

### 3 Program by the Numbers

#### 3.1 Quota Shares held by Initial Issues

The quota shares held by initial issues is presented below. Table 3.10 represents the change in the amount of quota share held by initial issues and shows an increasing downward trend. Data tables that present initial issue holdings by area are available in the Appendix.

Table 3.10 Year over Year Change in Halibut and Sablefish Initial Issues QS

Year over Year	Change in Halibut Initial Issue QS	Change in Sablefish Initial Issue QS
2021 to 2022	-7,131,799	-8,083,662
2020 to 2021	-6,495,788	-2,617,644
2019 to 2020	-4,971,565	-7,945,554
2018 to 2019	-5,827,545	-6,666,510
2017 to 2018	-2,308,230	-2,341,060
2016 to 2017	-3,678,562	-6,120,594
2015 to 2016	-4,631,348	-2,840,551
2014 to 2015	-3,497,095	-2,350,921
2013 to 2014	-5,248,893	-1,646,424

Source: NMFS Restricted Access Management (RAM) division sourced through AKFIN

Figure 3.10 Halibut IFQ Held by Initial Issues

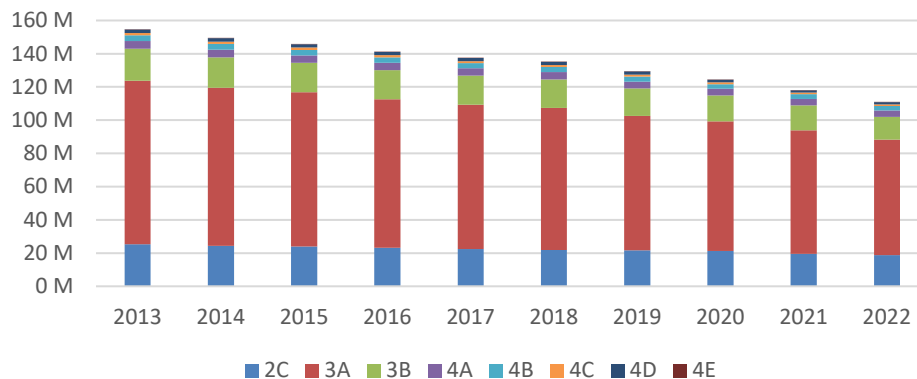
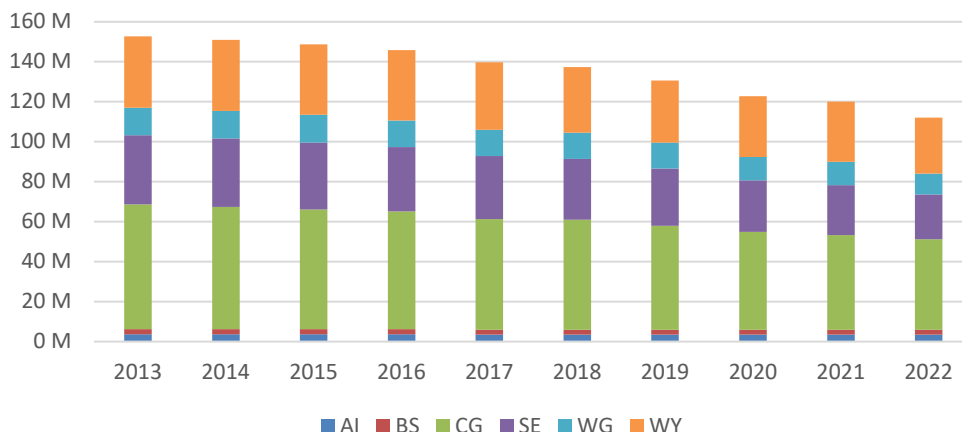




Table 3.11 Sablefish IFQ Held by Initial Issues



### 3.2 Medical Transfers

The below table is the total number of medical lease transactions by species and year. The number of persons transferring quota share out and receiving quota share in is also shown. The time series shows an increasing overall trend with a sharp increase in 2022.

Table 3.2 Medical Transfer of Halibut and Sablefish IFQ

Row Labels	Transfers	QS Transferred	Persons Transferring	Persons Receiving
<b>Halibut</b>	<b>1,202</b>	<b>6,022,207</b>	<b>819</b>	<b>559</b>
2022	434	2,883,788	291	192
2021	74	396,271	57	45
2020	413	2,133,048	292	166
2019	262	1,324,546	175	125
2018	236	1,103,787	162	122
2017	217	1,064,555	133	101
2016	184	815,111	126	98
2015	133	564,303	94	78
2014	98	317,071	73	57
2013	87	418,669	65	57
<b>Sablefish</b>	<b>865</b>	<b>15,395,268</b>	<b>610</b>	<b>492</b>
2022	179	5,294,200	122	95
2021	28	879,074	21	19
2020	166	2,996,102	115	79
2019	121	1,636,863	83	65
2018	111	1,649,895	75	65
2017	88	972,889	58	51
2016	68	651,128	49	38
2015	46	470,833	37	35
2014	33	473,368	29	25
2013	25	370,916	21	20

Source: NMFS Restricted Access Management (RAM) division sourced through AKFIN

### 3.3 Non-Medical Temporary Transfers

Non-medical lease transactions including transfers under an emergency rule are included in the below table by species and year. The number of persons transferring quota share out and receiving quota share in

is also shown. The time series shows two distinct trends, the 2021/2021 years and then the 2018/2019 and 2022 years.

Table 3.3 Non-Medical Transfer of Halibut and Sablefish IFQ

	Transfers	QS Transferred	Persons Transferring	Persons Receiving
<b>Halibut</b>				
2022	77	522,461	41	54
2021	905	4,815,906	608	311
2020	464	1,986,097	322	200
2019	59	391,739	26	45
2018	61	355,001	29	47
2017	63	380,074	24	48
2016	42	274,802	25	27
2015	47	265,436	26	32
2014	58	294,818	27	35
2013	54	373,995	23	34
<b>Sablefish</b>				
2022	32	950,793	21	24
2021	337	7,401,660	225	148
2020	142	2,248,607	106	79
2019	25	507,839	16	14
2018	28	626,216	18	18
2017	29	488,454	19	17
2016	23	255,709	14	16
2015	24	257,933	11	16
2014	24	294,495	13	16
2013	29	494,419	14	16

Source: NMFS Restricted Access Management (RAM) division sourced through AKFIN

### 3.4 Community Quota Entity Activity

The amount of CQE IFQ landings for all areas is shown in the table below. In order to avoid confidentiality concerns sablefish and halibut are listed together. The landings that are derived from CQE peaked in 2018 but appears to be highly variable.

Table 3.4 CQE Landings of Halibut and Sablefish IFQ

Year	Landings
2022	350,362
2021	201,629
2020	91,481
2019	147,685
2018	269,101
2017	87,486

Source: NMFS Restricted Access Management (RAM) division sourced through AKFIN

### 3.5 Quota Share held by Community

The following tables represent the fishery management plan sub-area that quota share (QS) owners reside in (INT-Interior) for 2013 to 2022 in millions of QS. Data tables with specific communities are in the Appendix, communities with less than three QS holders are shown grouped under the (blank) category. Both halibut and sablefish quota shows a trend toward increasing Alaska ownership.

Table 3.50 FMP Area of Halibut QS Owners Residence

	Alaska						States				Total
	AI	BS	CG	INT	SE	WG	AK	OR	WA	OTH	
2013	0.5	5.5	103.1	2.2	88.5	3.9	203.7	22.7	82.5	22.7	331.6
2014	1.1	6.4	100.5	2.2	89.6	3.9	203.7	23.9	83.5	20.5	331.6
2015	1.1	6.4	99.0	2.7	90.8	4.0	204.0	23.8	84.4	19.2	331.4
2016	1.0	6.3	98.0	2.3	91.6	3.8	203.0	23.3	85.2	19.8	331.3
2017	1.0	6.3	101.9	2.7	91.3	4.0	207.2	23.6	82.1	18.4	331.3
2018	1.1	6.5	97.6	2.8	93.2	4.0	205.1	23.7	83.0	19.5	331.3
2019	1.6	5.9	97.7	2.7	97.6	3.8	209.4	24.1	78.7	19.1	331.3
2020	1.5	4.5	97.4	2.9	97.1	3.5	206.9	24.6	78.1	21.6	331.3
2021	1.7	5.9	97.8	2.9	99.2	3.6	211.2	23.3	77.1	19.7	331.3
2022	1.7	5.9	96.3	3.1	100.3	3.7	211.0	22.8	75.8	21.5	331.1

Source: NMFS Restricted Access Management (RAM) division sourced through AKFIN

Table 3.51 FMP Area of Sablefish QS Owners Residence

	Alaska						States				Total
	AI	BS	CG	INT	SE	WG	AK	OR	WA	OTH	
2013	0.6	4.2	52.0	0.5	78.4	0.1	135.7	11.6	148.9	21.5	317.7
2014	0.7	4.3	51.0	0.5	78.7	0.1	135.3	12.2	147.4	22.9	317.8
2015	0.2	4.6	52.1	0.5	77.7	0.0	135.1	11.6	147.3	23.8	317.8
2016	0.2	5.2	52.9	0.6	78.9	0.0	137.8	10.4	145.4	24.2	317.7
2017	0.3	5.1	60.4	0.6	77.0	0.0	143.5	10.4	142.3	21.6	317.7
2018	1.1	8.1	52.6	0.7	78.6	0.0	141.1	10.4	142.5	23.7	317.7
2019	1.1	8.1	51.2	1.0	81.1	0.0	142.4	10.9	138.8	25.6	317.7
2020	0.8	5.2	54.3	1.0	81.1	0.0	142.4	16.6	131.2	27.6	317.7
2021	1.2	8.3	60.6	0.9	81.7	0.1	152.8	17.0	122.4	25.5	317.7
2022	2.1	8.1	59.2	1.5	82.3	0.1	153.3	21.2	118.6	24.8	317.7

Source: NMFS Restricted Access Management (RAM) division sourced through AKFIN

## 4 Appendix

### 4.1 Halibut IFQ TAC and Landings

Area	Total Harvest	TAC	%Harvested	Vessels	Permits
<b>2022</b>	<b>17,573,383</b>	<b>20,297,912</b>	<b>79.4%</b>	<b>732</b>	<b>1891</b>
2C	3,216,972	3,509,995	91.7%	385	661
3A	8,742,275	9,550,004	91.5%	392	1033
3B	2,897,116	3,349,924	86.5%	157	362
4A	1,277,563	1,759,997	72.6%	59	146
4B	511,136	1,023,999	49.9%	16	44
4C/4D	928,321	1,103,993	84.1%	20	60
<b>2021</b>	<b>17,253,108</b>	<b>18,569,500</b>	<b>87.8%</b>	<b>729</b>	<b>1725</b>
2C	3,290,345	3,529,990	93.2%	381	620
3A	8,677,885	8,949,983	97.0%	394	945
3B	2,410,299	2,559,937	94.2%	152	358
4A	1,430,595	1,659,993	86.2%	59	148
4B	624,186	983,999	63.4%	19	45
4C/4D	819,798	885,598	92.6%	27	43
<b>2020</b>	<b>15,003,309</b>	<b>16,079,152</b>	<b>90.3%</b>	<b>746</b>	<b>1751</b>
2C	3,200,727	3,410,009	93.9%	399	640
3A	6,818,145	7,049,985	96.7%	383	936
3B	2,246,209	2,409,948	93.2%	148	375
4A	1,146,995	1,410,003	81.3%	58	139
4B	683,163	880,002	77.6%	23	57
4C/4D	908,070	919,205	98.8%	33	50
<b>2019</b>	<b>16,481,748</b>	<b>17,709,979</b>	<b>87.8%</b>	<b>806</b>	<b>2092</b>
2C	3,389,158	3,610,000	93.9%	427	740
3A	7,898,431	8,059,985	98.0%	418	1119
3B	2,194,580	2,329,993	94.2%	172	398
4A	1,372,332	1,650,005	83.2%	63	175
4B	736,875	967,998	76.1%	24	73
4C/4D	890,372	1,091,998	81.5%	42	69
<b>2018</b>	<b>15,871,932</b>	<b>16,630,218</b>	<b>93.9%</b>	<b>810</b>	<b>2143</b>
2C	3,401,415	3,569,994	95.3%	424	763
3A	7,197,255	7,350,018	97.9%	414	1113
3B	2,437,783	2,619,995	93.0%	185	417
4A	1,217,036	1,370,005	88.8%	67	179
4B	826,707	840,002	98.4%	27	84
4C/4D	791,736	880,204	89.9%	38	74
<b>2017</b>	<b>17,632,200</b>	<b>18,292,405</b>	<b>94.9%</b>	<b>836</b>	<b>2210</b>
2C	4,049,456	4,209,404	96.2%	449	815

Area	Total Harvest	TAC	%Harvested	Vessels	Permits
3A	7,589,017	7,738,611	98.1%	432	1161
3B	3,023,590	3,139,993	96.3%	195	431
4A	1,270,207	1,390,000	91.4%	65	182
4B	833,417	912,000	91.4%	30	78
4C/4D	866,513	902,397	96.0%	38	77
<b>2016</b>	<b>16,753,624</b>	<b>17,153,049</b>	<b>96.7%</b>	<b>863</b>	<b>2317</b>
2C	3,811,086	3,925,080	97.1%	460	850
3A	7,258,022	7,335,632	98.9%	450	1207
3B	2,637,157	2,710,008	97.3%	199	459
4A	1,343,260	1,390,003	96.6%	69	190
4B	861,167	912,000	94.4%	34	84
4C/4D	842,932	880,326	95.8%	35	76
<b>2015</b>	<b>16,697,325</b>	<b>17,136,482</b>	<b>96.4%</b>	<b>874</b>	<b>2297</b>
2C	3,549,167	3,678,982	96.5%	461	856
3A	7,685,254	7,789,584	98.7%	458	1216
3B	2,600,242	2,650,000	98.1%	199	458
4A	1,319,795	1,390,002	94.9%	68	187
4B	852,286	912,001	93.5%	33	86
4C/4D	690,581	715,913	96.5%	38	76
<b>2014</b>	<b>15,772,510</b>	<b>15,954,004</b>	<b>97.5%</b>	<b>921</b>	<b>2224</b>
2C	3,215,413	3,318,733	96.9%	488	856
3A	7,353,833	7,317,357	100.5%	466	1185
3B	2,823,737	2,840,001	99.4%	219	455
4A	827,075	849,999	97.3%	66	186
4B	864,227	912,001	94.8%	34	80
4C/4D	688,225	715,913	96.1%	39	78
<b>2013</b>	<b>20,831,308</b>	<b>21,810,255</b>	<b>92.2%</b>	<b>937</b>	<b>2249</b>
2C	2,861,611	2,970,013	96.4%	502	881
3A	10,824,454	11,029,436	98.1%	473	1200
3B	4,034,396	4,290,003	94.0%	219	456
4A	1,206,747	1,329,994	90.7%	72	176
4B	986,945	1,160,005	85.1%	40	83
4C/4D	917,155	1,030,804	89.0%	37	73

Source: NMFS Restricted Access Management (RAM) division sourced through AKFIN

## 4.2 Sablefish IFQ TAC and Landings

Area	Total Harvest	TAC	%Harvested	Vessels	Permits
<b>2022</b>	<b>42,108,671</b>	<b>56,401,864</b>	<b>74.4%</b>	<b>273</b>	<b>685</b>
AI	1,260,242	8,549,439	14.7%	18	26
BS	3,995,212	4,641,293	86.1%	25	61
CG	14,210,842	17,575,017	80.9%	135	279
SE	11,080,414	12,487,880	88.7%	155	298
WG	5,882,160	6,574,122	89.5%	51	103
WY	5,679,801	6,574,113	86.4%	84	170
<b>2021</b>	<b>32,715,915</b>	<b>43,444,034</b>	<b>72.6%</b>	<b>271</b>	<b>625</b>
AI	1,038,722	6,239,018	16.6%	17	25
BS	2,216,972	2,992,817	74.1%	23	50
CG	12,643,663	14,206,410	89.0%	130	272
SE	8,205,259	10,093,906	81.3%	152	253
WG	3,868,518	4,281,334	90.4%	46	101
WY	4,742,781	5,630,549	84.2%	86	173
<b>2020</b>	<b>22,736,966</b>	<b>31,707,405</b>	<b>66.3%</b>	<b>266</b>	<b>599</b>
AI	602,298	2,696,224	22.3%	14	23
BS	1,045,263	1,639,657	63.7%	24	45
CG	8,288,526	11,366,893	72.9%	119	249
SE	6,528,920	8,074,690	80.9%	161	265
WG	2,717,110	3,425,945	79.3%	45	93
WY	3,554,849	4,503,996	78.9%	82	158
<b>2019</b>	<b>21,550,802</b>	<b>25,967,982</b>	<b>75.6%</b>	<b>280</b>	<b>730</b>
AI	757,182	2,656,542	28.5%	21	29
BS	785,997	1,313,940	59.8%	24	48
CG	7,927,275	9,131,453	86.8%	133	302
SE	6,289,322	6,578,525	95.6%	169	328
WG	2,401,890	2,788,822	86.1%	52	102
WY	3,389,136	3,498,700	96.9%	90	207
<b>2018</b>	<b>20,801,226</b>	<b>25,800,433</b>	<b>72.7%</b>	<b>295</b>	<b>751</b>
AI	701,120	2,630,086	26.7%	22	27
BS	624,577	1,291,900	48.3%	26	40
CG	7,488,265	9,096,175	82.3%	147	329
SE	6,241,871	6,556,481	95.2%	174	332
WG	2,381,506	2,722,680	87.5%	60	111
WY	3,363,887	3,503,111	96.0%	95	216
<b>2017</b>	<b>19,928,678</b>	<b>22,577,279</b>	<b>78.9%</b>	<b>293</b>	<b>770</b>
AI	697,853	2,294,989	30.4%	19	29
BS	604,718	1,124,349	53.8%	25	45
CG	7,619,165	7,960,809	95.7%	150	324

Area	Total Harvest	TAC	%Harvested	Vessels	Permits
SE	5,703,844	5,745,194	99.3%	171	346
WG	2,249,621	2,378,727	94.6%	60	120
WY	3,053,477	3,073,211	99.4%	103	217
<b>2016</b>	<b>17,891,062</b>	<b>20,352,880</b>	<b>76.0%</b>	<b>304</b>	<b>769</b>
AI	667,069	2,059,098	32.4%	21	23
BS	390,480	1,014,116	38.5%	28	37
CG	6,946,009	7,094,411	97.9%	156	337
SE	5,088,856	5,108,064	99.6%	177	348
WG	1,991,049	2,244,286	88.7%	61	120
WY	2,807,599	2,832,905	99.1%	103	222
<b>2015</b>	<b>20,247,853</b>	<b>23,569,392</b>	<b>72.8%</b>	<b>306</b>	<b>757</b>
AI	892,236	2,383,173	37.4%	26	29
BS	316,503	1,177,258	26.9%	34	37
CG	7,904,224	8,214,342	96.2%	159	339
SE	5,842,559	5,912,737	98.8%	178	349
WG	2,022,392	2,599,232	77.8%	54	111
WY	3,269,939	3,282,650	99.6%	99	218
<b>2014</b>	<b>21,414,917</b>	<b>23,679,597</b>	<b>79.3%</b>	<b>315</b>	<b>751</b>
AI	1,148,967	2,394,193	48.0%	29	37
BS	426,211	1,181,664	36.1%	33	48
CG	8,226,952	8,256,224	99.6%	167	336
SE	5,919,469	5,941,401	99.6%	183	350
WG	2,441,310	2,610,245	93.5%	59	127
WY	3,252,008	3,295,870	98.7%	103	216
<b>2013</b>	<b>25,479,833</b>	<b>28,013,841</b>	<b>83.5%</b>	<b>331</b>	<b>770</b>
AI	1,611,420	2,830,706	56.9%	29	40
BS	798,298	1,393,303	57.3%	34	61
CG	9,443,940	9,770,787	96.7%	176	344
SE	6,873,697	7,032,670	97.7%	186	354
WG	2,847,171	3,086,439	92.2%	57	130
WY	3,905,307	3,899,936	100.1%	112	220

Source: NMFS Restricted Access Management (RAM) division sourced through AKFIN

### 4.3 Halibut IFQ Landings by Hired Skipper (HS)

	Landings by HS	Landings	% HS	HS Delivering	HS with QS
<b>2022</b>	<b>4,612,683</b>	<b>17,054,052</b>	<b>27.0%</b>	<b>151</b>	<b>100</b>
2C	21,958	3,147,362	0.7%	10	5
3A	2,659,923	8,505,635	31.3%	125	78
3B	1,056,703	2,804,440	37.7%	78	37
4A	418,853	1,207,994	34.7%	31	13
4B	211,705	501,516	42.2%	12	6
4C/4D	243,541	887,105	27.5%	10	4
<b>2021</b>	<b>4,528,980</b>	<b>16,743,437</b>	<b>27.0%</b>	<b>149</b>	<b>102</b>
2C	10,499	3,216,512	0.3%	11	6
3A	2,633,693	8,447,571	31.2%	126	80
3B	912,687	2,337,447	39.0%	80	40
4A	479,137	1,378,367	34.8%	30	13
4B	261,739	588,076	44.5%	15	6
4C/4D	231,225	775,464	29.8%	11	5
<b>2020</b>	<b>4,116,151</b>	<b>14,548,488</b>	<b>28.3%</b>	<b>162</b>	<b>117</b>
2C	27,671	3,132,426	0.9%	16	9
3A	2,185,000	6,635,877	32.9%	130	86
3B	907,734	2,175,415	41.7%	85	46
4A	428,131	1,102,342	38.8%	32	12
4B	307,438	639,354	48.1%	16	7
4C/4D	260,177	863,074	30.1%	13	5
<b>2019</b>	<b>4,785,335</b>	<b>15,969,513</b>	<b>30.0%</b>	<b>178</b>	<b>109</b>
2C	28,992	3,315,500	0.9%	15	7
3A	2,647,521	7,695,675	34.4%	144	79
3B	960,863	2,125,326	45.2%	94	43
4A	507,629	1,305,630	38.9%	38	17
4B	336,705	679,680	49.5%	18	6
4C/4D	303,625	847,702	35.8%	15	4
<b>2018</b>	<b>4,799,051</b>	<b>15,379,833</b>	<b>31.2%</b>	<b>186</b>	<b>107</b>
2C	38,154	3,328,757	1.1%	16	7
3A	2,586,605	6,999,905	37.0%	147	71
3B	1,067,807	2,362,976	45.2%	100	43
4A	462,420	1,161,110	39.8%	40	16
4B	353,635	776,479	45.5%	20	9
4C/4D	290,430	750,606	38.7%	17	4
<b>2017</b>	<b>5,127,404</b>	<b>17,104,480</b>	<b>30.0%</b>	<b>185</b>	<b>117</b>
2C	41,772	3,965,421	1.1%	18	7
3A	2,642,980	7,394,285	35.7%	151	81



	Landings by HS	Landings	% HS	HS Delivering	HS with QS
3B	1,290,348	2,930,591	44.0%	100	43
4A	454,590	1,210,197	37.6%	41	18
4B	357,623	780,014	45.8%	20	9
4C/4D	340,091	823,972	41.3%	17	6
<b>2016</b>	<b>4,973,627</b>	<b>16,238,763</b>	<b>30.6%</b>	<b>192</b>	<b>117</b>
2C	46,432	3,729,301	1.2%	19	7
3A	2,599,262	7,065,018	36.8%	159	82
3B	1,163,149	2,555,959	45.5%	105	44
4A	532,406	1,284,524	41.4%	42	16
4B	341,453	806,757	42.3%	19	8
4C/4D	290,925	797,204	36.5%	20	7
<b>2015</b>	<b>5,065,462</b>	<b>16,202,653</b>	<b>31.3%</b>	<b>208</b>	<b>125</b>
2C	44,789	3,471,624	1.3%	20	8
3A	2,745,253	7,490,552	36.6%	170	81
3B	1,157,493	2,529,876	45.8%	106	44
4A	508,014	1,261,433	40.3%	38	16
4B	347,889	795,086	43.8%	18	8
4C/4D	262,024	654,082	40.1%	17	7
<b>2014</b>	<b>5,179,967</b>	<b>15,288,492</b>	<b>33.9%</b>	<b>231</b>	<b>136</b>
2C	36,907	3,147,594	1.2%	19	7
3A	2,739,785	7,152,095	38.3%	178	89
3B	1,343,348	2,738,015	49.1%	130	49
4A	343,566	788,354	43.6%	44	20
4B	423,728	813,525	52.1%	22	10
4C/4D	292,633	648,909	45.1%	18	8
<b>2013</b>	<b>7,802,653</b>	<b>20,195,140</b>	<b>38.6%</b>	<b>250</b>	<b>150</b>
2C	33,806	2,797,542	1.2%	22	10
3A	4,336,206	10,540,010	41.1%	197	100
3B	1,956,677	3,920,587	49.9%	131	52
4A	550,500	1,156,127	47.6%	44	20
4B	491,100	914,116	53.7%	26	13
4C/4D	434,364	866,758	50.1%	20	8

Source: NMFS Restricted Access Management (RAM) division sourced through AKFIN

**4.4 Sablefish IFQ Landings by Hired Skipper (HS)**

	<b>Landings</b>	<b>Landings by HS</b>	<b>%Fished by HS</b>	<b>HS Delivering</b>	<b>HS with QS</b>
<b>2022</b>	<b>11,472,545</b>	<b>33,334,712</b>	<b>34.4%</b>	<b>94</b>	<b>55</b>
AI	22,470	474,068	4.7%	3	0
BS	434,856	2,247,756	19.3%	8	3
CG	5,495,703	11,832,696	46.4%	69	28
SE	869,675	10,121,778	8.6%	19	9
WG	1,416,995	3,454,424	41.0%	23	13
WY	3,232,846	5,203,990	62.1%	53	22
<b>2021</b>	<b>9,260,619</b>	<b>26,349,396</b>	<b>35.1%</b>	<b>101</b>	<b>69</b>
AI	3,233	497,070	0.7%	2	0
BS	226,998	1,347,181	16.8%	8	1
CG	4,748,279	10,474,152	45.3%	71	41
SE	666,626	7,434,681	9.0%	21	8
WG	949,386	2,269,236	41.8%	22	13
WY	2,666,097	4,327,076	61.6%	53	28
<b>2020</b>	<b>6,989,505</b>	<b>18,296,041</b>	<b>38.2%</b>	<b>99</b>	<b>62</b>
AI	18,189	254,782	7.1%	4	1
BS	45,030	472,360	9.5%	9	3
CG	3,580,482	6,593,556	54.3%	66	32
SE	552,350	6,095,304	9.1%	20	10
WG	685,480	1,641,384	41.8%	22	13
WY	2,107,974	3,238,655	65.1%	54	23
<b>2019</b>	<b>6,612,796</b>	<b>17,592,651</b>	<b>37.6%</b>	<b>104</b>	<b>53</b>
AI	17,752	446,104	4.0%	5	0
BS	111,522	370,132	30.1%	6	2
CG	3,281,153	6,553,636	50.1%	76	31
SE	498,880	5,704,789	8.7%	22	7
WG	667,330	1,420,039	47.0%	27	10
WY	2,036,159	3,097,951	65.7%	61	26
<b>2018</b>	<b>6,461,462</b>	<b>16,999,047</b>	<b>38.0%</b>	<b>108</b>	<b>56</b>
AI	30,292	425,005	7.1%	5	0
BS	17,301	212,560	8.1%	4	0
CG	3,293,133	6,208,918	53.0%	84	35
SE	511,527	5,659,561	9.0%	23	7
WG	650,338	1,410,472	46.1%	31	12
WY	1,958,871	3,082,531	63.5%	64	24
<b>2017</b>	<b>6,529,137</b>	<b>16,344,505</b>	<b>39.9%</b>	<b>113</b>	<b>59</b>
AI	22,862	345,325	6.6%	7	1
BS	84,451	279,675	30.2%	8	2
CG	3,649,441	6,391,000	57.1%	90	35

	Landings	Landings by HS	%Fished by HS	HS Delivering	HS with QS
SE	413,312	5,173,066	8.0%	23	9
WG	643,719	1,349,123	47.7%	31	11
WY	1,715,352	2,806,316	61.1%	62	24
<b>2016</b>	<b>6,401,005</b>	<b>14,686,861</b>	<b>43.6%</b>	<b>114</b>	<b>65</b>
AI	15,819	323,533	4.9%	6	0
BS	102,313	265,059	38.6%	7	2
CG	3,687,010	5,816,342	63.4%	96	32
SE	413,226	4,612,445	9.0%	27	11
WG	518,986	1,088,826	47.7%	31	15
WY	1,663,651	2,580,656	64.5%	64	23
<b>2015</b>	<b>7,360,356</b>	<b>16,752,671</b>	<b>43.9%</b>	<b>113</b>	<b>60</b>
AI	30,872	394,696	7.8%	6	0
BS	45,920	215,988	21.3%	9	1
CG	4,313,418	6,660,159	64.8%	91	33
SE	498,328	5,297,681	9.4%	27	9
WG	580,729	1,186,566	48.9%	26	11
WY	1,891,089	2,997,581	63.1%	63	24
<b>2014</b>	<b>7,972,607</b>	<b>17,552,557</b>	<b>45.4%</b>	<b>128</b>	<b>61</b>
AI	184,767	568,760	32.5%	9	1
BS	38,672	196,776	19.7%	12	3
CG	4,487,126	6,927,663	64.8%	100	32
SE	484,217	5,370,692	9.0%	29	12
WG	859,526	1,510,784	56.9%	39	12
WY	1,918,299	2,977,882	64.4%	68	21
<b>2013</b>	<b>9,663,561</b>	<b>20,418,201</b>	<b>47.3%</b>	<b>137</b>	<b>62</b>
AI	181,996	535,949	34.0%	7	0
BS	167,982	494,763	34.0%	22	7
CG	5,455,741	7,902,690	69.0%	111	37
SE	581,458	6,214,027	9.4%	26	11
WG	951,916	1,689,146	56.4%	33	9
WY	2,324,468	3,581,626	64.9%	68	19

Source: NMFS Restricted Access Management (RAM) division sourced through AKFIN

## 4.5 Halibut Initial Issues Holdings

Area	Active Initial Issuees	Total Persons	Initial Issues QS	Total QS
<b>2022</b>	<b>1,139</b>	<b>2,915</b>	<b>110,895,043</b>	<b>331,556,698</b>
2C	334	898	18,785,449	59,477,396
3A	468	1,139	69,484,705	184,893,008
3B	146	417	13,707,240	54,201,315
4A	46	191	3,789,924	14,586,011
4B	25	78	2,759,959	9,284,774
4C	17	50	1,017,978	4,016,352
4D	10	46	1,212,834	4,958,250
4E	93	96	136,954	139,592
<b>2021</b>	<b>1,199</b>	<b>2,964</b>	<b>118,026,842</b>	<b>331,556,698</b>
2C	349	926	19,575,009	59,477,396
3A	498	1,146	74,380,936	184,893,008
3B	156	428	15,046,991	54,201,315
4A	48	197	3,844,952	14,586,011
4B	25	77	2,759,959	9,284,774
4C	19	50	1,018,474	4,016,352
4D	11	44	1,263,567	4,958,250
4E	93	96	136,954	139,592
<b>2020</b>	<b>1,264</b>	<b>3,000</b>	<b>124,522,630</b>	<b>331,556,698</b>
2C	372	939	21,338,775	59,477,396
3A	525	1,164	77,921,158	184,893,008
3B	164	434	15,619,657	54,201,315
4A	50	196	4,009,242	14,586,011
4B	25	78	2,759,959	9,284,774
4C	21	50	1,101,101	4,016,352
4D	14	43	1,635,784	4,958,250
4E	93	96	136,954	139,592
<b>2019</b>	<b>1,310</b>	<b>3,015</b>	<b>129,494,195</b>	<b>331,556,698</b>
2C	377	939	21,605,970	59,477,396
3A	547	1,169	80,930,083	184,893,008
3B	178	444	16,592,748	54,201,315
4A	51	196	4,111,069	14,586,011
4B	26	78	3,031,709	9,284,774
4C	22	50	1,107,592	4,016,352
4D	16	43	1,978,070	4,958,250
4E	93	96	136,954	139,592
<b>2018</b>	<b>1,354</b>	<b>3,045</b>	<b>135,321,740</b>	<b>331,556,698</b>
2C	387	943	21,920,814	59,477,396
3A	576	1,185	85,505,485	184,893,008
3B	180	451	17,021,773	54,201,315

Area	Active Initial Issues	Total Persons	Initial Issues QS	Total QS
4A	53	195	4,439,869	14,586,011
4B	28	82	3,219,316	9,284,774
4C	21	50	1,099,459	4,016,352
4D	16	43	1,978,070	4,958,250
4E	93	96	136,954	139,592
<b>2017</b>	<b>1,379</b>	<b>3,065</b>	<b>137,629,970</b>	<b>331,556,698</b>
2C	395	947	22,385,399	59,477,396
3A	588	1,201	86,966,586	184,893,008
3B	184	452	17,396,184	54,201,315
4A	53	194	4,439,869	14,586,011
4B	28	82	3,219,316	9,284,774
4C	22	50	1,107,592	4,016,352
4D	16	43	1,978,070	4,958,250
4E	93	96	136,954	139,592
<b>2016</b>	<b>1,430</b>	<b>3,135</b>	<b>141,308,532</b>	<b>331,556,698</b>
2C	413	977	23,242,159	59,477,396
3A	614	1,236	89,337,085	184,893,008
3B	186	456	17,457,754	54,201,315
4A	55	195	4,531,236	14,586,011
4B	29	81	3,231,223	9,284,774
4C	23	50	1,348,871	4,016,352
4D	17	44	2,023,250	4,958,250
4E	93	96	136,954	139,592
<b>2015</b>	<b>1,489</b>	<b>3,186</b>	<b>145,939,880</b>	<b>331,556,698</b>
2C	433	993	23,907,479	59,477,396
3A	643	1,259	92,841,401	184,893,008
3B	192	461	17,743,854	54,201,315
4A	55	197	4,531,236	14,586,011
4B	31	85	3,302,846	9,284,774
4C	25	51	1,452,860	4,016,352
4D	17	44	2,023,250	4,958,250
4E	93	96	136,954	139,592
<b>2014</b>	<b>1,551</b>	<b>3,246</b>	<b>149,436,975</b>	<b>331,556,698</b>
2C	453	1,013	24,328,659	59,477,396
3A	673	1,283	95,146,998	184,893,008
3B	201	466	18,417,841	54,201,315
4A	56	202	4,615,312	14,586,011
4B	32	87	3,307,335	9,284,774
4C	26	53	1,460,626	4,016,352
4D	17	46	2,023,250	4,958,250
4E	93	96	136,954	139,592
<b>2013</b>	<b>1,618</b>	<b>3,316</b>	<b>154,685,868</b>	<b>331,615,487</b>

Area	Active Initial Issues	Total Persons	Initial Issues QS	Total QS
2C	471	1,031	25,401,862	59,536,185
3A	712	1,318	98,374,789	184,893,008
3B	209	477	19,287,207	54,201,315
4A	57	203	4,650,234	14,586,011
4B	33	91	3,350,946	9,284,774
4C	26	53	1,460,626	4,016,352
4D	17	47	2,023,250	4,958,250
4E	93	96	136,954	139,592

Source: NMFS Restricted Access Management (RAM) division sourced through AKFIN

#### 4.6 Sablefish Initial Issues Holdings

Area	Active Initial Issues	Total Persons	Initial Issues QS	Total QS
<b>2022</b>	<b>419</b>	<b>1,265</b>	<b>112,048,158</b>	<b>317,801,022</b>
AI	29	79	3,506,359	31,932,492
BS	27	92	2,334,055	18,765,280
CG	123	354	45,330,813	111,686,622
SE	121	375	22,447,774	66,120,619
WG	36	148	10,354,204	36,029,579
WY	83	217	28,074,953	53,266,430
<b>2021</b>	<b>455</b>	<b>1,279</b>	<b>120,131,820</b>	<b>317,801,022</b>
AI	29	80	3,506,359	31,932,492
BS	29	93	2,363,000	18,765,280
CG	134	359	47,463,282	111,686,622
SE	133	374	24,969,764	66,120,619
WG	40	153	11,681,596	36,029,579
WY	90	220	30,147,819	53,266,430
<b>2020</b>	<b>471</b>	<b>1,297</b>	<b>122,749,464</b>	<b>317,801,022</b>
AI	29	84	3,506,359	31,932,492
BS	32	96	2,393,203	18,765,280
CG	138	367	49,030,182	111,686,622
SE	138	374	25,695,927	66,120,619
WG	41	155	11,697,098	36,029,579
WY	93	221	30,426,695	53,266,430
<b>2019</b>	<b>492</b>	<b>1,289</b>	<b>130,695,018</b>	<b>317,801,022</b>
AI	30	85	3,507,013	31,932,492
BS	32	98	2,393,203	18,765,280
CG	146	359	51,956,201	111,686,622
SE	145	368	28,678,046	66,120,619
WG	44	156	13,048,581	36,029,579
<b>Area</b>	<b>Active Initial Issues</b>	<b>Total Persons</b>	<b>Initial Issues QS</b>	<b>Total QS</b>
WY	95	223	31,111,974	53,266,430
<b>2018</b>	<b>504</b>	<b>1,285</b>	<b>137,361,528</b>	<b>317,801,022</b>
AI	30	85	3,507,013	31,932,492
BS	32	98	2,393,203	18,765,280
CG	150	361	55,012,218	111,686,622
SE	148	368	30,506,943	66,120,619
WG	45	153	13,109,800	36,029,579
WY	99	220	32,832,351	53,266,430
<b>2017</b>	<b>515</b>	<b>1,279</b>	<b>139,702,588</b>	<b>317,801,022</b>
AI	31	86	3,542,388	31,932,492
BS	32	98	2,393,203	18,765,280
CG	152	354	55,343,745	111,686,622
SE	153	368	31,630,694	66,120,619
WG	45	154	13,109,800	36,029,579

WY	102	219	33,682,758	53,266,430
<b>2016</b>	<b>545</b>	<b>1,308</b>	<b>145,823,182</b>	<b>317,801,022</b>
AI	32	87	3,682,898	31,932,492
BS	35	99	2,468,755	18,765,280
CG	162	356	58,998,446	111,686,622
SE	159	377	32,216,616	66,120,619
WG	50	161	13,304,565	36,029,579
WY	107	228	35,151,902	53,266,430
<b>2015</b>	<b>569</b>	<b>1,330</b>	<b>148,663,733</b>	<b>317,801,022</b>
AI	32	86	3,682,898	31,932,492
BS	35	101	2,468,755	18,765,280
CG	169	367	59,988,839	111,686,622
SE	169	385	33,498,375	66,120,619
WG	51	159	13,784,450	36,029,579
WY	113	232	35,240,416	53,266,430
<b>2014</b>	<b>587</b>	<b>1,332</b>	<b>151,014,654</b>	<b>317,801,022</b>
AI	34	87	3,705,606	31,932,492
BS	36	100	2,471,563	18,765,280
CG	177	365	61,234,554	111,686,622
SE	173	389	34,241,932	66,120,619
WG	51	159	13,784,450	36,029,579
WY	116	232	35,576,549	53,266,430
<b>2013</b>	<b>602</b>	<b>1,359</b>	<b>152,661,078</b>	<b>317,801,022</b>
AI	34	90	3,705,606	31,932,492
BS	36	102	2,471,563	18,765,280
CG	182	369	62,556,800	111,686,622
SE	179	400	34,497,685	66,120,619
<b>Area</b>	<b>Active Initial Issues</b>	<b>Total Persons</b>	<b>Initial Issues QS</b>	<b>Total QS</b>
WG	53	162	13,787,810	36,029,579
WY	118	236	35,641,614	53,266,430

Source: NMFS Restricted Access Management (RAM) division sourced through AKFIN

#### 4.7 Halibut QS by Owner Residence (millions of QS)

Community	2013	2014	2015	2016	2017	2018	2019	2020	2021	2023
<b>AI</b>	<b>0.5</b>	<b>1.1</b>	<b>1.1</b>	<b>1.0</b>	<b>1.0</b>	<b>1.1</b>	<b>1.6</b>	<b>1.5</b>	<b>1.7</b>	<b>1.7</b>
Adak		0.8								
AI	0.3	0.0	0.7	0.7	0.7	0.7	1.2	1.2	1.4	1.4
Atka	0.2	0.4	0.4	0.4	0.4	0.4	0.4	0.4	0.4	0.3
<b>BS</b>	<b>5.5</b>	<b>6.4</b>	<b>6.4</b>	<b>6.3</b>	<b>6.3</b>	<b>6.5</b>	<b>5.9</b>	<b>4.5</b>	<b>5.9</b>	<b>5.9</b>
Akutan	0.3	0.3	0.2	0.2	0.2	0.3	0.3	0.3	0.3	0.3
BS	0.3	0.6	0.6	0.6	0.6	0.6	0.3	0.3	0.3	0.2
Dillingham	1.5	1.5	1.5	1.5	1.5	1.5	1.5	0.0	1.5	1.5
Dutch Harbor	0.3	0.7	0.8	0.7	0.6	1.2	1.2	1.3	1.2	1.3
Mekoryuk	0.4	0.4	0.4	0.4	0.4	0.4	0.4	0.4	0.4	0.4
Naknek	0.0	0.0	0.0	0.0	0.0	0.0	0.0	0.0	0.0	0.0
Saint George										
Island	0.1	0.1	0.1	0.0	0.0	0.0	0.0	0.0	0.0	0.0
Saint Paul Island	1.4	1.4	1.4	1.4	1.4	0.9	0.8	0.8	0.8	0.8
Togiak	0.0	0.0	0.0	0.0	0.0	0.0	0.0	0.0	0.0	0.0
Toksook Bay	0.0	0.0	0.0	0.0	0.0	0.0	0.0	0.0	0.0	0.0
Unalaska	1.3	1.4	1.4	1.4	1.5	1.5	1.5	1.5	1.5	1.3
<b>CG</b>	<b>103.1</b>	<b>100.5</b>	<b>99.0</b>	<b>98.0</b>	<b>101.9</b>	<b>97.6</b>	<b>97.7</b>	<b>97.4</b>	<b>97.8</b>	<b>96.3</b>

Anchor Point	1.3	1.2	1.2	1.2	1.2	1.1	0.8	0.6	0.6	0.5
Anchorage	10.3	11.5	11.2	11.4	11.6	9.6	9.9	10.5	10.6	10.7
CG	0.3	0.3	0.5	0.4	0.4	0.4	0.4	0.4	0.4	0.6
Chignik	0.3	0.3								
Chignik Lagoon	0.4	0.4	0.4	0.4	0.4	0.4	0.4	0.4	0.4	0.4
Chugiak	0.1	0.1	0.1	0.1	0.1	0.1	0.1	0.1		
Clam Gulch	0.5	0.5	0.5	0.5	0.5	0.3	0.3	0.3	0.3	0.3
Eagle River	2.4	1.2	1.0	0.9	1.4	1.4	1.4	1.4	1.4	0.7
Fritz Creek	0.7	0.7	0.5	0.5	0.5	0.6	0.5	0.4	0.2	
Girdwood	0.1	0.1	0.1	0.1	0.1	0.1	0.1	0.1	0.1	0.1
Halibut Cove	0.3	0.4	0.4	0.4	0.4	0.4	0.4	0.4	0.4	0.4
Homer	20.1	19.9	20.3	20.3	20.4	20.6	20.5	21.9	22.6	23.7
Kasilof	0.8	0.8	0.6	0.9	0.7	0.7	0.9	0.9	0.8	0.8
Kenai	2.7	2.7	2.7	2.7	2.7	2.7	2.5	2.4	2.5	2.5
Kodiak	47.8	45.3	44.1	42.7	45.6	42.9	41.7	40.0	40.6	38.9
Nikiski	0.2	0.2	0.2	0.2	0.2	0.2	0.2	0.2	0.2	0.3
<b>Community</b>	<b>2013</b>	<b>2014</b>	<b>2015</b>	<b>2016</b>	<b>2017</b>	<b>2018</b>	<b>2019</b>	<b>2020</b>	<b>2021</b>	<b>2023</b>
Nikolaevsk	0.8	0.8	0.9	0.8	0.8	0.6	1.3	1.3	1.3	1.4
Ninilchik	0.4	0.4	0.6	0.6	0.6	0.6	0.6	0.6	0.6	0.6
Old Harbor	0.3	0.3	0.4	0.4	0.4	0.4	0.4	0.4	0.4	0.4
Ouzinkie	0.2	0.2	0.2	0.2	0.2	0.2	0.2	0.2	0.2	0.2
Palmer	1.0	0.9	0.6	0.7	0.7	0.7	0.6	0.7	0.7	0.5
Port Lions	0.2	0.1	0.1	0.1	0.1	0.0	0.0	0.0	0.0	0.1
Seldovia	3.0	2.6	2.6	2.6	2.8	2.2	2.7	2.5	2.4	1.8
Seward	4.0	4.6	4.7	4.5	4.6	4.7	4.5	4.4	4.4	4.4
Soldotna	2.1	2.0	2.2	2.2	2.1	2.4	2.5	2.7	2.4	2.3
Sterling	0.6	0.7	0.5	0.7	0.7	0.6	0.6	0.6	0.6	0.7
Wasilla	2.1	2.0	2.3	2.5	3.1	3.6	4.2	3.8	3.6	4.0
<b>INT</b>	<b>2.2</b>	<b>2.2</b>	<b>2.7</b>	<b>2.3</b>	<b>2.7</b>	<b>2.8</b>	<b>2.7</b>	<b>2.9</b>	<b>2.9</b>	<b>3.1</b>
Delta Junction	1.3	1.5	1.9	1.6	1.9	2.0	2.1	2.1	2.0	2.0
Fairbanks	0.4	0.4	0.6	0.4	0.5	0.5	0.4	0.5	0.6	0.8
INT	0.2	0.2	0.2	0.2	0.2	0.2	0.2	0.3	0.2	0.2
Willow	0.3	0.1	0.1	0.1	0.1	0.1				
<b>SE</b>	<b>88.5</b>	<b>89.6</b>	<b>90.8</b>	<b>91.6</b>	<b>91.3</b>	<b>93.2</b>	<b>97.6</b>	<b>97.1</b>	<b>99.2</b>	<b>100.3</b>
Angoon	0.2	0.2	0.2	0.2	0.2	0.2	0.2	0.2	0.2	0.2
Auke Bay	1.0	0.9	0.6	0.6	0.6	0.6	0.6	0.6	0.6	0.6
Cordova	7.7	8.0	8.6	8.6	8.1	8.7	9.4	10.0	10.7	11.5
Craig	1.6	1.6	1.7	1.6	1.7	1.7	2.0	2.0	1.9	2.0
Douglas	2.8	2.3	2.5	2.8	2.8	3.0	3.4	3.7	4.0	4.0
Edna Bay	0.2	0.2	0.2	0.2		0.4				
Elfin Cove	1.2	0.9	1.1	1.1	1.1	1.1	1.1	1.1	1.2	1.3
Gustavus	0.7	0.7	0.4	0.3	0.3	0.3	0.3	0.4	0.4	0.5
Haines	2.6	2.5	2.3	2.4	2.4	2.5	3.0	3.0	2.9	3.0



Hoonah	1.2	1.2	0.9	0.9	1.0	1.0	1.0	1.0	1.0	1.2
Hydaburg	0.0	0.0	0.0	0.0	0.0					
Juneau	8.3	8.7	9.5	9.4	9.5	9.2	9.3	8.7	9.0	8.5
Kake	0.7	0.6	0.6	0.6	0.5	0.5	0.5	0.5	0.5	0.5
Ketchikan	3.4	3.6	3.6	3.5	3.6	3.7	3.8	3.8	3.9	4.1
Klawock	0.1	0.1	0.1	0.1						
Metlakatla	0.2	0.2	0.3	0.3	0.2	0.1	0.1	0.2	0.1	
Pelican	0.9	0.9	1.5	1.4	1.4	0.9	1.5	1.5	1.5	1.5
Petersburg	28.5	29.1	29.9	30.5	29.8	30.4	30.1	29.6	29.1	28.8
Point Baker	0.1	0.1	0.1	0.1	0.1	0.1	0.1	0.1	0.1	0.1
Port Alexander	0.1	0.1	0.1	0.2	0.2	0.2	0.2	0.2	0.2	0.2
SE	0.2	0.1	0.1	0.1	0.2	0.1	0.3	0.4	0.4	0.5
Sitka	18.4	18.4	17.5	17.2	17.6	17.5	18.5	17.9	18.6	18.6
Tenakee Springs	0.2	0.2	0.2	0.2	0.1	0.3	0.3	0.3	0.2	0.2
Thorne Bay	0.1	0.1	0.1	0.1	0.1	0.1	0.1	0.1	0.1	0.2
Valdez	0.6	0.6	0.5	0.7	0.7	0.5	0.9	1.5	1.9	2.3
<b>Community</b>	<b>2013</b>	<b>2014</b>	<b>2015</b>	<b>2016</b>	<b>2017</b>	<b>2018</b>	<b>2019</b>	<b>2020</b>	<b>2021</b>	<b>2023</b>
Ward Cove	0.3	0.3	0.3	0.3	0.4	0.3	0.3	0.3	0.3	0.3
Wrangell	5.2	5.2	4.7	4.8	5.2	5.9	6.0	6.1	6.3	6.4
Yakutat	1.8	2.6	3.1	3.1	3.3	3.7	4.4	4.1	3.9	3.8
<b>WG</b>	<b>3.9</b>	<b>3.9</b>	<b>4.0</b>	<b>3.8</b>	<b>4.0</b>	<b>4.0</b>	<b>3.8</b>	<b>3.5</b>	<b>3.6</b>	<b>3.7</b>
False Pass	0.4	0.4	0.4	0.4	0.4	0.4	0.4	0.4		
King Cove	0.9	1.0	1.2	1.2	1.2	1.2	1.2	1.1	1.1	1.1
Perryville						0.1	0.1	0.1	0.2	
Sand Point	2.5	2.4	2.3	2.1	2.3	2.3	2.1	2.0	2.0	2.1
WG	0.1	0.1	0.1	0.0	0.0				0.3	0.5
<b>OR</b>	<b>22.7</b>	<b>23.9</b>	<b>23.8</b>	<b>23.3</b>	<b>23.6</b>	<b>23.7</b>	<b>24.1</b>	<b>24.6</b>	<b>23.3</b>	<b>22.8</b>
<b>WA</b>	<b>82.5</b>	<b>83.5</b>	<b>84.4</b>	<b>85.2</b>	<b>82.1</b>	<b>83.0</b>	<b>78.7</b>	<b>78.1</b>	<b>77.1</b>	<b>75.8</b>
<b>OTH</b>	<b>22.7</b>	<b>20.5</b>	<b>19.2</b>	<b>19.8</b>	<b>18.4</b>	<b>19.5</b>	<b>19.1</b>	<b>21.6</b>	<b>19.7</b>	<b>21.5</b>

Source: NMFS Restricted Access Management (RAM) division sourced through AKFIN

\*Only communities with 3 or more owners represented

#### 4.8 Sablefish QS by Owner Residence (millions of QS)

Community	2013	2014	2015	2016	2017	2018	2019	2020	2021	2022
<b>AI</b>	<b>0.6</b>	<b>0.7</b>	<b>0.2</b>	<b>0.2</b>	<b>0.3</b>	<b>1.1</b>	<b>1.1</b>	<b>0.8</b>	<b>1.2</b>	<b>2.1</b>
AI	0.6	0.7	0.2	0.2	0.3	1.1	1.1	0.8	1.2	2.1
<b>BS</b>	<b>4.2</b>	<b>4.3</b>	<b>4.6</b>	<b>5.2</b>	<b>5.1</b>	<b>8.1</b>	<b>8.1</b>	<b>5.2</b>	<b>8.3</b>	<b>8.1</b>
BS	3.6	3.7	4.0	4.3	4.3	4.3	4.3	1.1	4.6	4.4
Dutch Harbor				0.3	0.2	3.5	3.5	3.7	3.7	3.7
Unalaska	0.6	0.6	0.6	0.6	0.6	0.4	0.4	0.4		
<b>CG</b>	<b>52.0</b>	<b>51.0</b>	<b>52.1</b>	<b>52.9</b>	<b>60.4</b>	<b>52.6</b>	<b>51.2</b>	<b>54.3</b>	<b>60.6</b>	<b>59.2</b>

Anchor Point	1.1	0.7	0.5	0.5	0.5	0.5	0.5			
Anchorage	12.0	12.0	12.1	15.5	16.8	10.6	10.5	11.8	14.4	14.0
CG	1.0	1.0	0.6	1.5	3.1	4.2	1.6	3.6	4.5	4.2
Eagle River			0.6	0.6	0.6	0.6	0.6			
Fritz Creek								0.6		
Homer	8.2	7.9	8.6	9.0	10.6	11.0	12.0	12.5	11.2	11.0
Kasilof	0.0	0.0	0.0	0.0	0.0	0.0	0.0	0.0	0.0	0.0
Kenai	0.0	0.0	0.0							
Kodiak	19.9	19.4	19.3	15.7	19.3	16.4	15.8	16.1	18.8	17.4
Nikolaevsk	0.4	0.4	0.4	0.3						
Palmer	0.9	0.9	0.6	0.6	0.6	0.7	0.6	0.6		0.6
Seldovia	1.2	1.2	1.2	1.2	1.2	0.9	1.2	1.2	1.0	0.9
Seward	6.6	7.0	7.4	7.5	7.0	7.1	7.1	7.4	9.4	9.5
Wasilla	0.6	0.6	0.8	0.5	0.7	0.6	1.2	0.6	1.1	1.5
<b>INT</b>	<b>0.5</b>	<b>0.5</b>	<b>0.5</b>	<b>0.6</b>	<b>0.6</b>	<b>0.7</b>	<b>1.0</b>	<b>1.0</b>	<b>0.9</b>	<b>1.5</b>
Delta Junction	0.4	0.4	0.4	0.5	0.5	0.7	1.0	1.0	0.9	1.4
<b>Community</b>	<b>2013</b>	<b>2014</b>	<b>2015</b>	<b>2016</b>	<b>2017</b>	<b>2018</b>	<b>2019</b>	<b>2020</b>	<b>2021</b>	<b>2023</b>
INT	0.1	0.1	0.1	0.1	0.1	0.0	0.0	0.0	0.0	0.0
<b>SE</b>	<b>78.4</b>	<b>78.7</b>	<b>77.7</b>	<b>78.9</b>	<b>77.0</b>	<b>78.6</b>	<b>81.1</b>	<b>81.1</b>	<b>81.7</b>	<b>82.3</b>
Auke Bay	0.4	0.4								
Cordova	3.4	3.4	3.4	3.3	4.3	5.6	5.7	6.2	6.5	6.8
Craig	0.7	0.7	0.7	0.7	0.8	0.8	0.9	0.7	0.7	0.7
Douglas	2.4	2.3	2.3	2.2	2.2	2.2	2.1	2.1	2.1	2.4
Elfin Cove			0.5							
Haines	0.7	0.7	0.6	0.5	0.5	0.8	0.7	0.7	0.8	0.8
Hoonah	1.0									
Juneau	8.0	8.1	6.7	6.3	5.9	5.3	6.4	6.2	5.4	5.9
Ketchikan	1.3	1.3	1.4	1.4	1.4	1.5	1.6	1.6	1.7	2.6
Pelican	0.9	1.0	2.8	2.8	2.8	1.0	2.8	2.4	2.4	2.5
Petersburg	26.1	26.5	27.0	27.4	25.0	26.8	26.5	26.5	27.1	25.9
SE	2.2	2.5	1.9	3.1	2.5	2.5	2.0	2.1	1.7	1.8
Sitka	30.4	30.9	29.5	30.3	30.6	30.7	31.1	31.3	31.9	31.7
Wrangell	0.9	0.9	0.9	0.9	0.9	1.3	1.3	1.3	1.3	1.3
<b>WG</b>	<b>0.1</b>	<b>0.1</b>	<b>0.0</b>	<b>0.0</b>	<b>0.0</b>	<b>0.0</b>	<b>0.0</b>	<b>0.0</b>	<b>0.1</b>	<b>0.1</b>
Sand Point	0.1								0.1	0.1
WG	0.0	0.1	0.0	0.0	0.0	0.0	0.0	0.0	0.0	0.0
<b>OR</b>	<b>11.6</b>	<b>12.2</b>	<b>11.6</b>	<b>10.4</b>	<b>10.4</b>	<b>10.4</b>	<b>10.9</b>	<b>16.6</b>	<b>17.0</b>	<b>21.2</b>
<b>WA</b>	<b>148.9</b>	<b>147.4</b>	<b>147.3</b>	<b>145.4</b>	<b>142.3</b>	<b>142.5</b>	<b>138.8</b>	<b>131.2</b>	<b>122.4</b>	<b>118.6</b>
<b>OTH</b>	<b>21.5</b>	<b>22.9</b>	<b>23.8</b>	<b>24.2</b>	<b>21.6</b>	<b>23.7</b>	<b>25.6</b>	<b>27.6</b>	<b>25.5</b>	<b>24.8</b>

Source: NMFS Restricted Access Management (RAM) division sourced through AKFIN

\*Only communities with 3 or more owners represented

## 5 Preparers and Person Consulted

Alicia M Miller NMFS	AKRO SF
Michael Fey	AKFIN
Mason Smith NMFS	AKRO SF