

**ADF&G Informational Handout for  
Charter Halibut Committee Meeting  
October 25, 2024**

Table 1. Preliminary charter halibut harvest estimates for Areas 2C and 3A for 2024.

Area	Mean wt (lb)	Logbook Harvest (no. fish)	Yield (lb)	Release Mortality (lb)	Total Removals (lb)	Allocation (lb)	Overage (lb)	Overage %
2C	9.07	89,303	810,319	32,416	842,735	810,000	32,735	4.0%
3A	9.85	161,439	1,590,586	16,724	1,607,309	1,890,000	-282,691	-15.0%

Table 2. Comparison of forecast (Dec 2023 analysis) and preliminary estimates (Oct 2024).

Area	Component	Predicted Dec 2023	Prelim Oct 2024	Observed Relative to Predicted
2C	Harvest (no. fish)	84,162	89,303	6.1%
	Average wt (lb)	9.25	9.07	-1.9%
	Yield (Mlb)	0.778	0.810	4.1%
	Rel mort (Mlb)	0.033	0.032	-3.2%
	Total removals (Mlb)	0.812	0.843	3.8%
3A	Harvest (no. fish)	175,579	161,439	-8.1%
	Average wt (lb)	10.64	9.85	-7.4%
	Yield (Mlb)	1.868	1.591	-14.9%
	Rel mort (Mlb)	0.016	0.017	5.6%
	Total removals (Mlb)	1.884	1.607	-14.7%

Table 3. Comparison of 2023 preliminary (Oct 2023) and final (Oct 2024) estimates.

Area	Component	Preliminary	Final	Final Relative to Preliminary
2C	Harvest (no. fish)	83,605	84,911	1.6%
	Average wt (lb)	9.41	9.41	0.0%
	Yield (Mlb)	0.786	0.799	1.6%
	rel mort (Mlb)	0.026	0.033	25.9%
	Total removals (Mlb)	0.813	0.832	2.4%
3A	Harvest (no. fish)	154,646	0.9%	154,646
	Average wt (lb)	10.17	0.8%	10.17
	Yield (Mlb)	1.572	1.7%	1.572
	rel mort (Mlb)	0.009 <sup>a</sup>	0.016	74.7% <sup>a</sup>
	Total removals (Mlb)	1.556	1.588	2.1%

<sup>a</sup>- An error existed in the 2023 preliminary release mortality estimates for 3A. Preliminary release mortality should have been 0.012 Mlb resulting in 31.1% change (final relative to preliminary).

Table 4.1. Performance of 2C charter management measures recommended annually by the North Pacific Fishery Management Council since 2014 (2024 preliminary estimates in bold italics).

Area	Year	Management measure	MgmtType	Allocation <sup>a</sup>	Removals <sup>a</sup>	Overage	% Overage
2C	2012	One fish, U45-O68 rev. slot	GHL	0.931	0.605	-0.326	-35%
	2013	One fish, U45-O68 rev. slot	GHL	0.788	0.762	-0.026	-3%
	2014	One fish, U44-O76 rev. slot	CSP	0.761	0.827	0.066	9%
	2015	One fish, U42-O80 rev slot	CSP	0.851	0.814	-0.037	-4%
	2016	One fish, U43-O80 rev slot	CSP	0.906	0.839	-0.067	-7%
	2017	One fish, U44-O80 rev slot	CSP	0.915	0.941	0.026	3%
	2018	One fish, U38-O80 rev slot	CSP	0.810	0.716	-0.094	-12%
	2019	One fish, U38-O80 rev slot	CSP	0.820	0.697	-0.123	-15%
	2020	One fish, U40-O80 rev slot through 6/14, U45-O80 after 6/14	CSP	0.780	0.483	-0.297	-38%
	2021	One fish, U50-O72 rev slot	CSP	0.810	1.163	0.353	44%
	2022	One fish, U40-O80 rev slot	CSP	0.820	0.848	0.028	3%
	2023	One fish, U40-O80 rev slot, nine Mondays closed July 24-Sept 18	CSP	0.800	0.832	0.032	4%
	2024	One fish, U40-O80 rev slot, U36-O80 starting July 15, Fridays closed July 19 - September 13 except GAF	CSP	0.810	<b>0.843</b>	0.033	4%

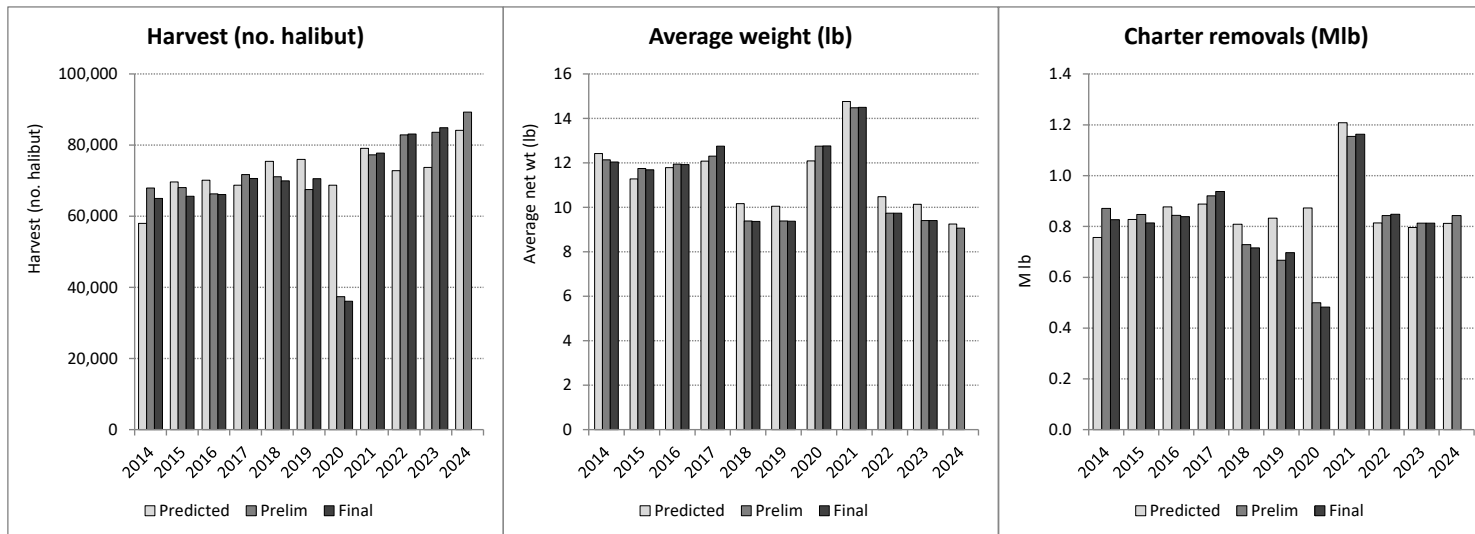
<sup>a</sup>- 2024 removal estimates are preliminary

Table 4.2. Performance of 3A charter management measures recommended annually by the North Pacific Fishery Management Council since 2014 (2024 preliminary estimates in bold italics).

Area	Year	Management measure	MgmtType	Allocation <sup>a</sup>	Removals <sup>a</sup>	Overage	% Overage
3A	2012	Two fish any size	GHL	3.103	2.284	-0.819	-26%
	2013	Two fish any size	GHL	2.734	2.514	-0.220	-8%
	2014	Two fish, one ≤ 29", one trip/day with halibut harvest.	CSP	1.782	2.066	0.284	16%
	2015	Two fish, one ≤ 29", Thursday closed Jun 15-Aug 31, annual limit 5 halibut, one trip/day with halibut harvest.	CSP	1.890	2.094	0.204	11%
	2016	Two fish, one ≤ 28", Wednesday closed all year, annual limit 4 halibut, one trip/day with halibut harvest.	CSP	1.814	2.021	0.207	11%
	2017	Two fish, one ≤ 28", Wednesday closed all year, three Tuesdays closed, annual limit 4 halibut, one trip/day with halibut harvest.	CSP	1.890	2.089	0.199	11%
	2018	Two fish, one ≤ 28", Wednesday closed all year, six Tuesdays closed, annual limit 4 halibut, one trip/day with halibut harvest.	CSP	1.790	1.886	0.096	5%
	2019	Two fish, one ≤ 28", Wednesday closed all year, five Tuesdays closed, annual limit 4 halibut, one trip/day with halibut harvest.	CSP	1.890	2.054	0.122	6%
	2020	Two fish (one ≤ 26" thru 6/14, ≤ 32" after 6/14), Tuesday and Wednesday closed thru 6/14, all days open after 6/14, annual limit 4 halibut thru 6/14, no annual limit after 6/14, one trip/day with halibut harvest.	CSP	1.710	1.567	-0.143	-8%
	2021	Two fish, one ≤ 32", Wednesday closed all year, one trip/day with halibut harvest.	CSP	1.950	2.455	0.505	26%
	2022	Two fish, one ≤ 28", Wednesday closed all year, nine Tuesdays closed, one trip/day with halibut harvest.	CSP	2.110	1.741	-0.369	-17%
	2023	Two fish, one ≤ 28", Wednesday closed all year, nine Tuesdays closed, one trip/day with halibut harvest.	CSP	1.890	1.588	-0.302	-16%
	2024	Two fish, one ≤ 28", Wednesday closed all year, one trip/day with halibut harvest.	CSP	1.890	<b>1.607</b>	-0.283	-15%

<sup>a</sup> - 2024 removal estimates are preliminary

### Area 2C



### Area 3A

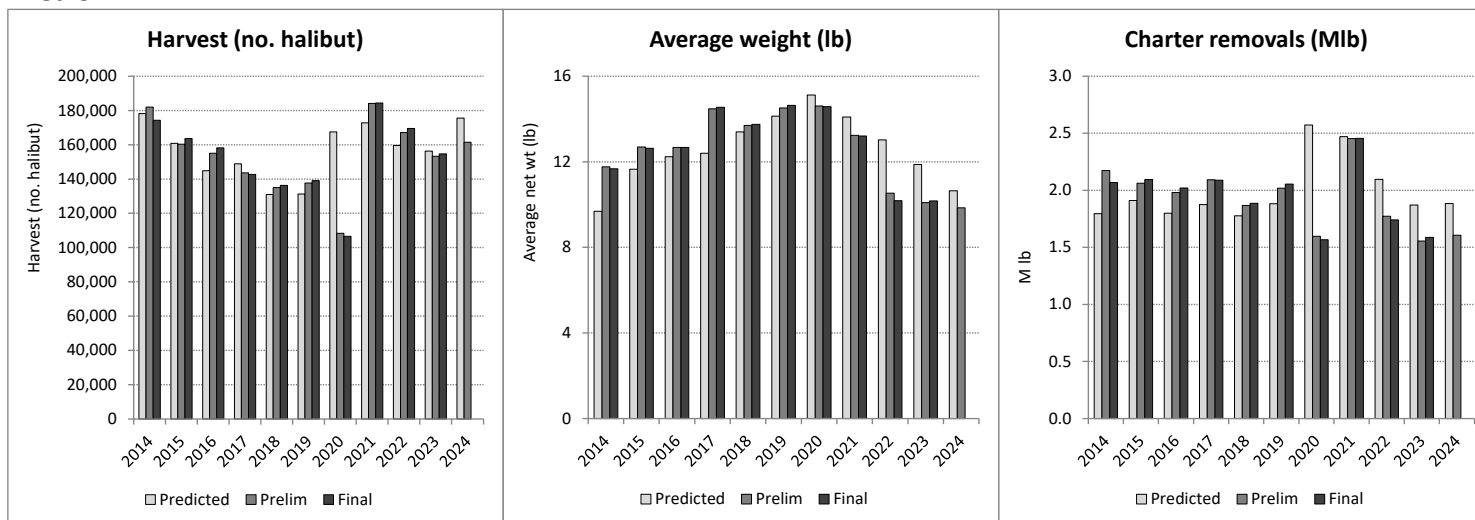


Figure 1. Comparison of predictions (prior to each season), preliminary estimates (based on partial-year logbook data), and final estimates of harvest, average weight, and total charter removals, Areas 2C and 3A, 2014-2024.