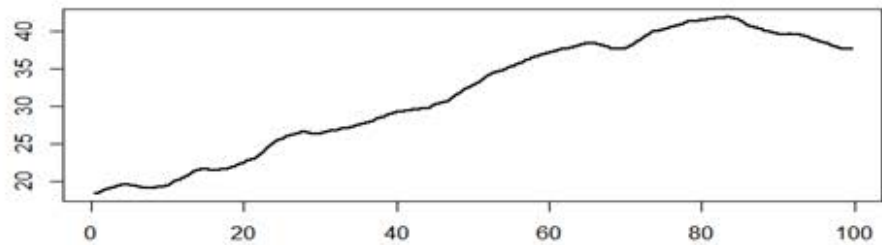
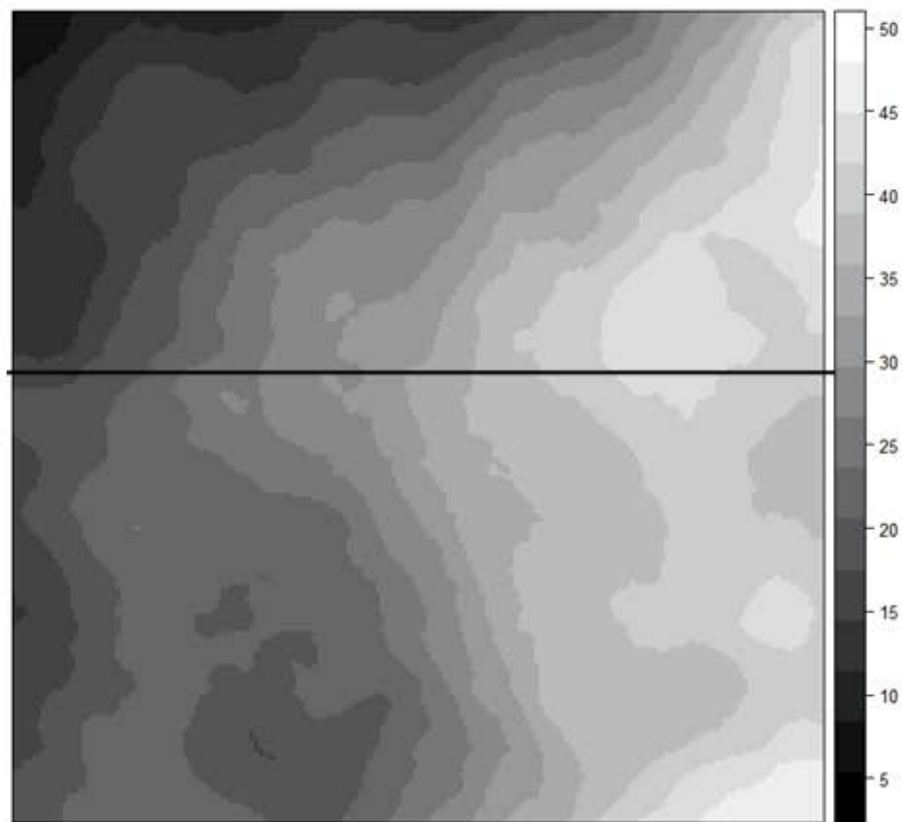


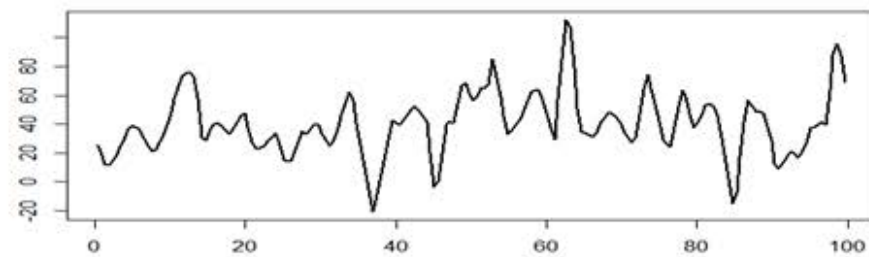
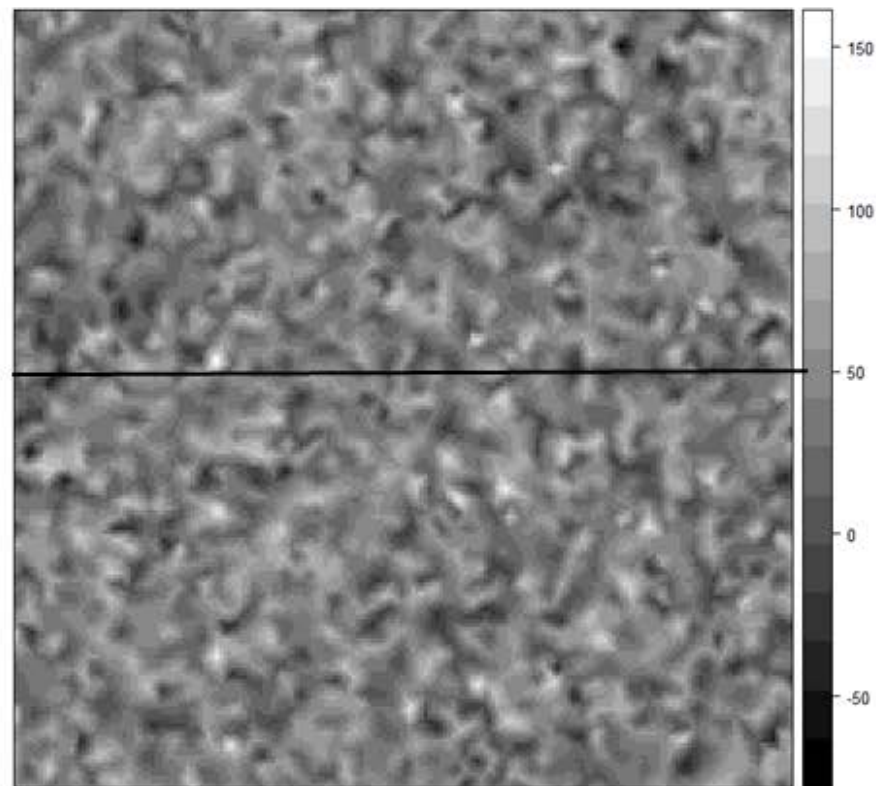
A VAST model of Gulf of Alaska Dover Sole

Andrea Havron, Carey McGilliard

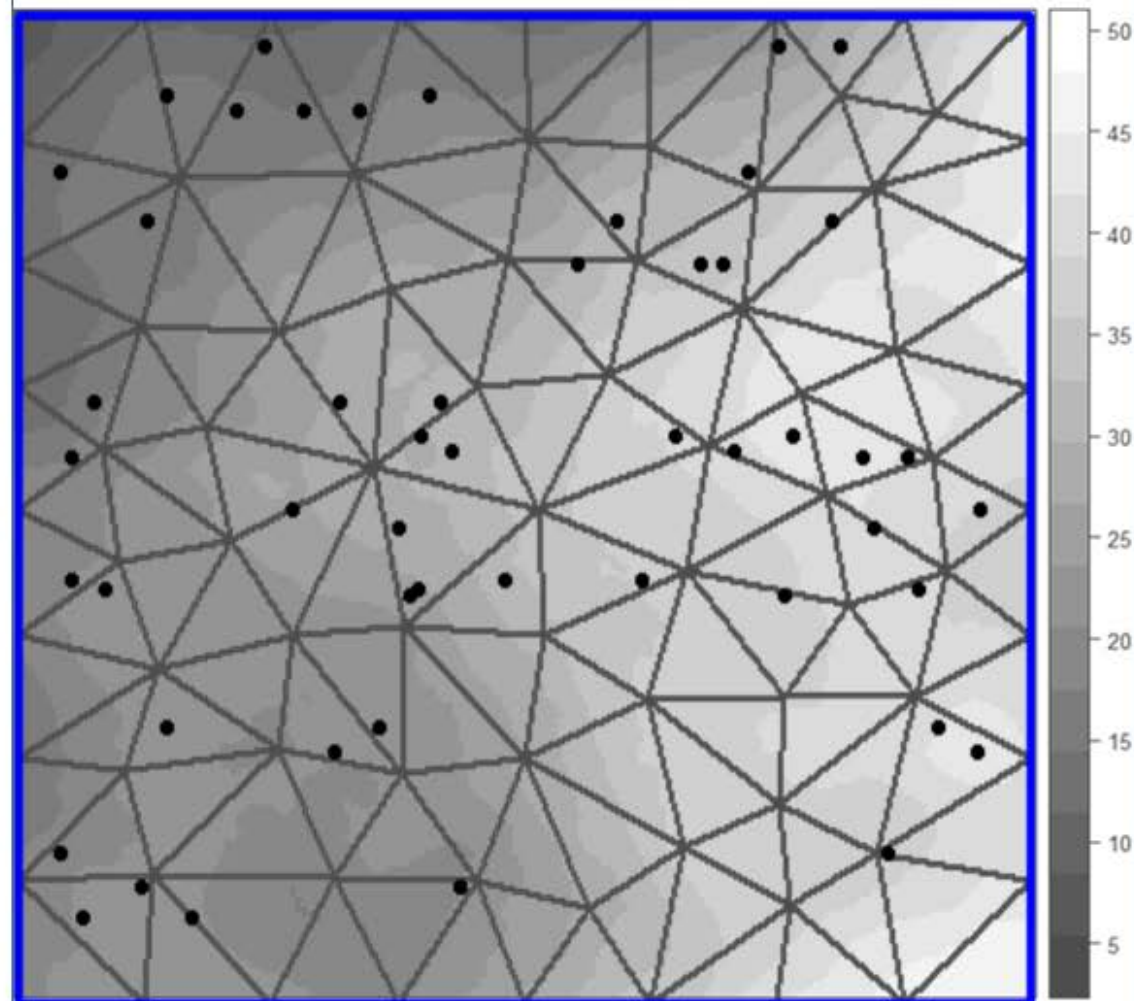
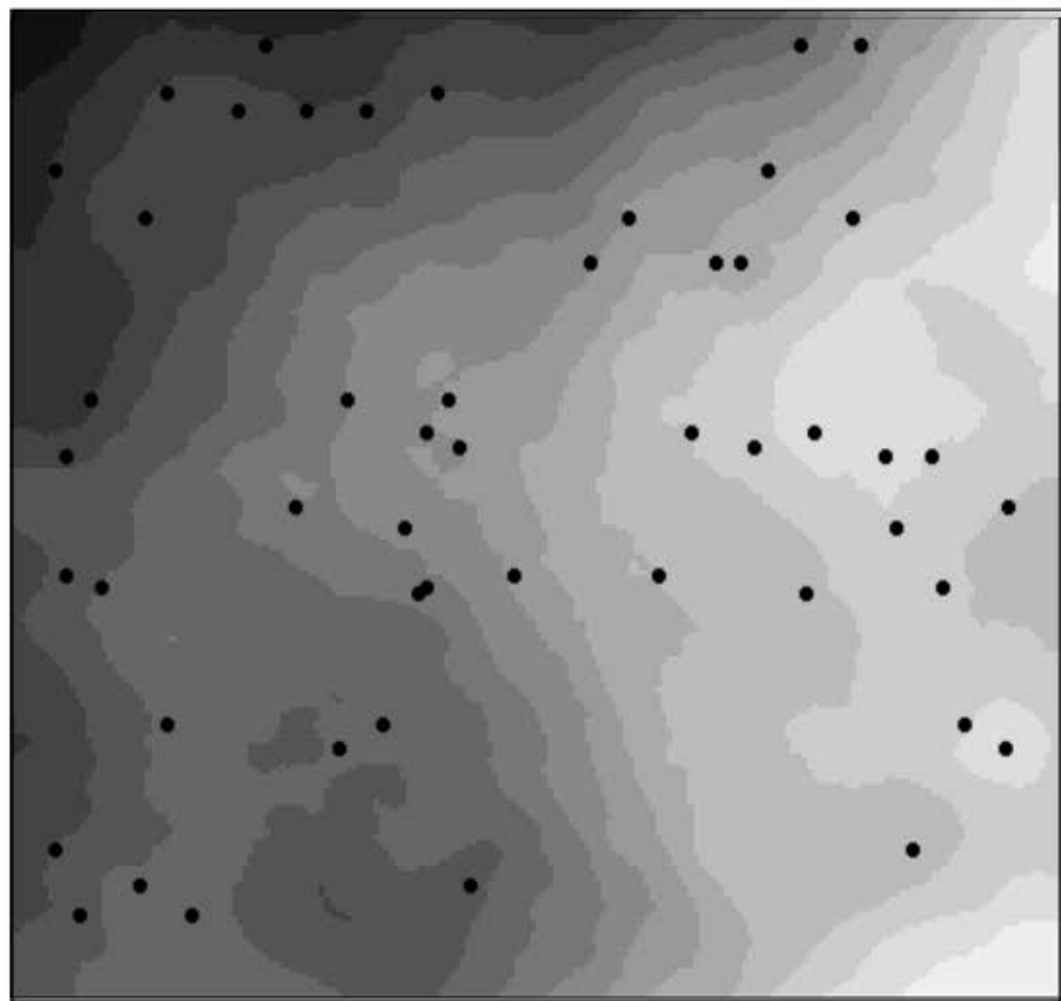
Positive Correlation



Random Pattern

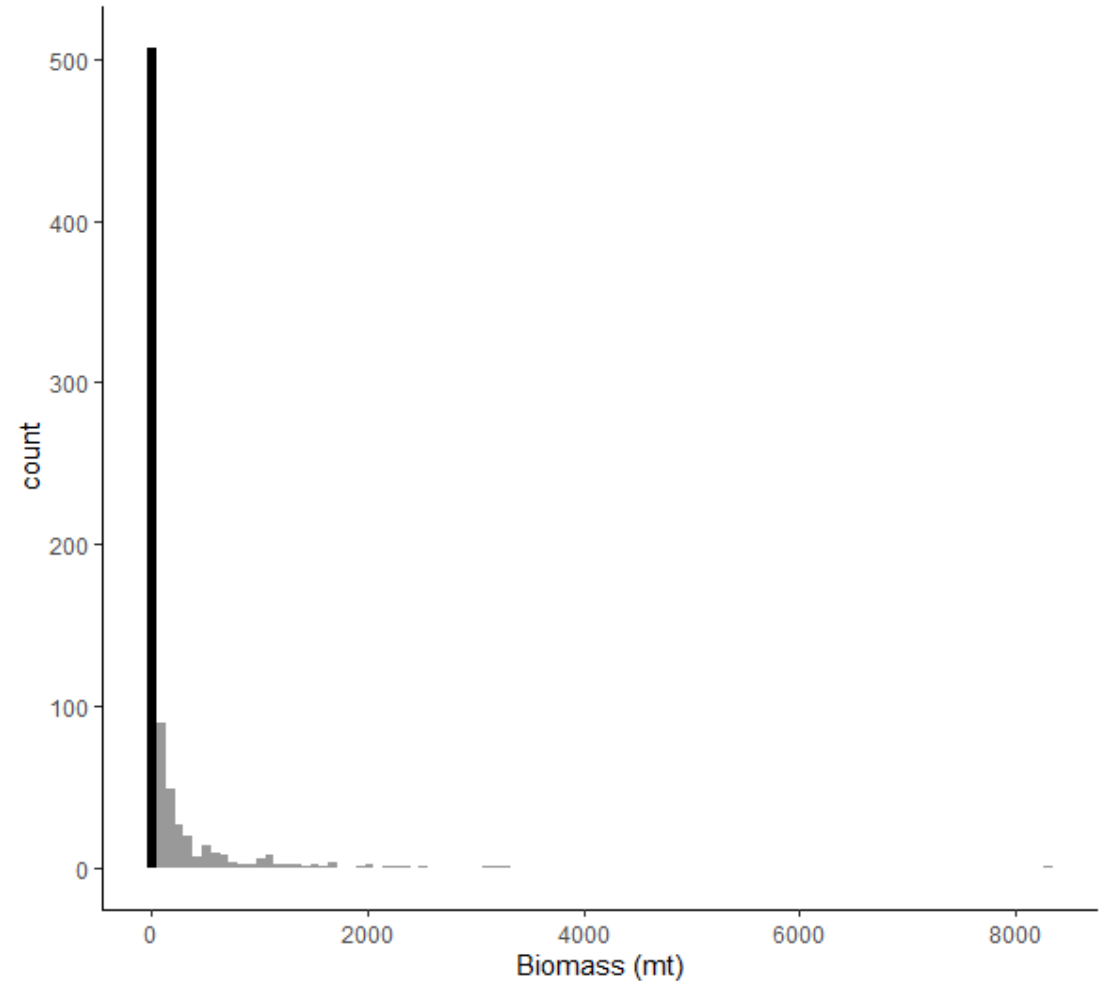


Triangulated Mesh



VAST Decisions for Survey Indices

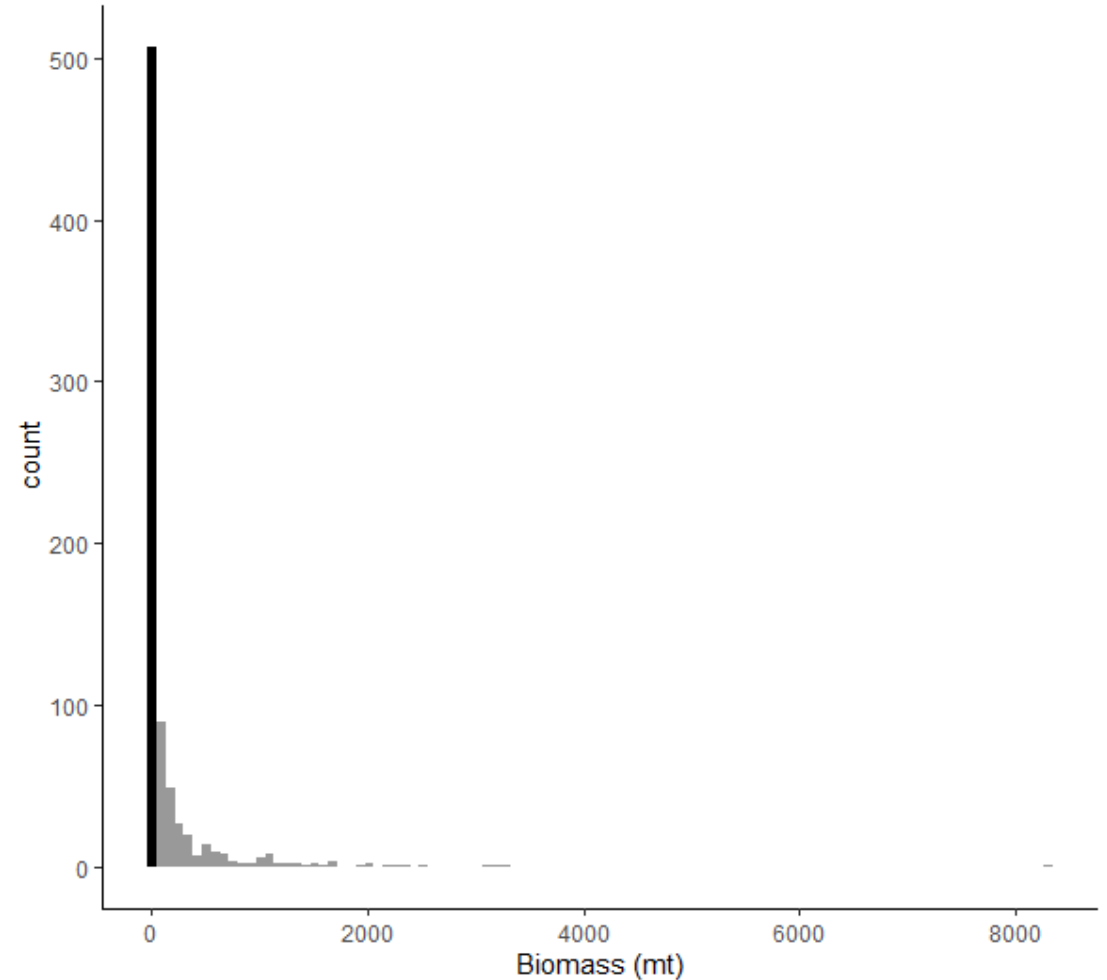
- Observation Model
- Spatial/Spatio-temporal Model
- Additional Random Effects
- Adding Covariates



VAST Decisions for Survey Indices

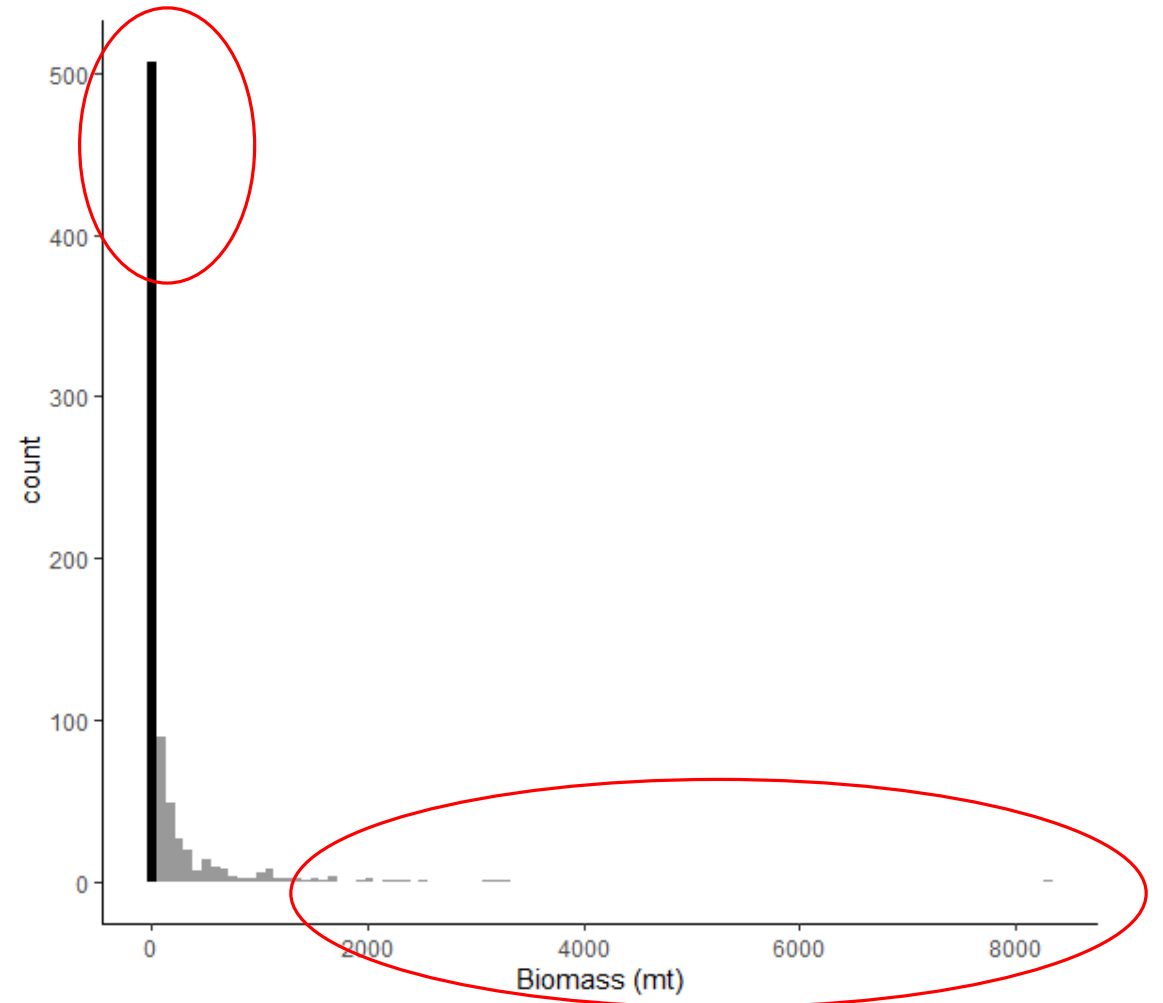
- Observation Model
 - Likelihood Model
 - Probability of Encounter
 - Positive Biomass
- Spatial/Spatio-temporal Model

- Additional Random Effects
- Adding Covariates

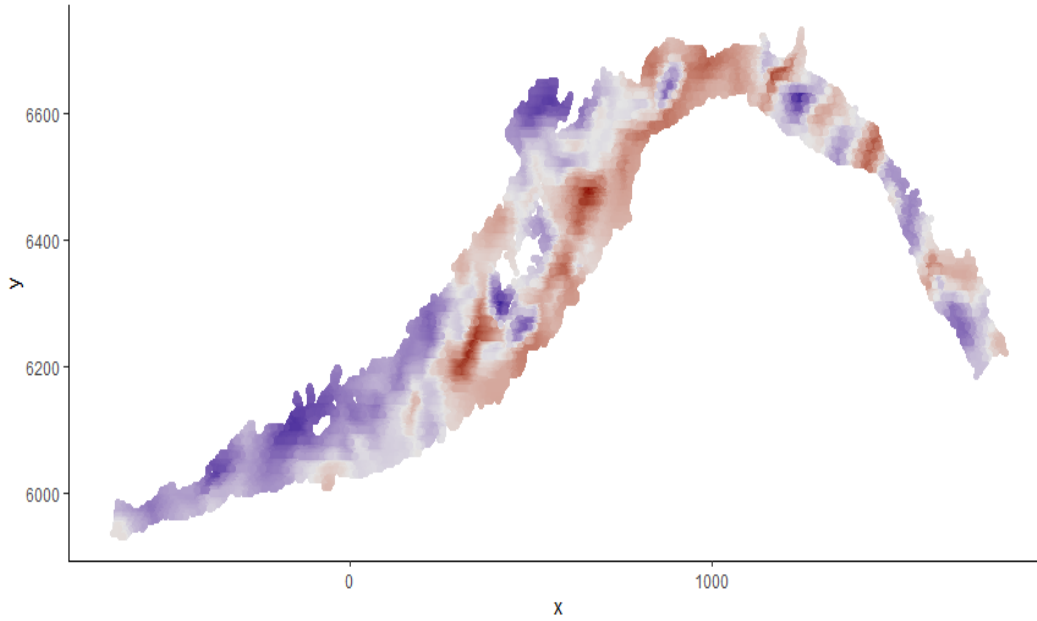


VAST Decisions for Survey Indices

- Observation Model
 - Likelihood Model
 - Probability of Encounter
 - Positive Biomass
- Spatial/Spatio-temporal Model
 - Spatial/Spatio-temporal in Probability of Encounter
 - Spatial/Spatio-temporal in Positive biomass
 - Spatial Structure
 - Mesh
 - Anisotropy
- Additional Random Effects
- Adding Covariates

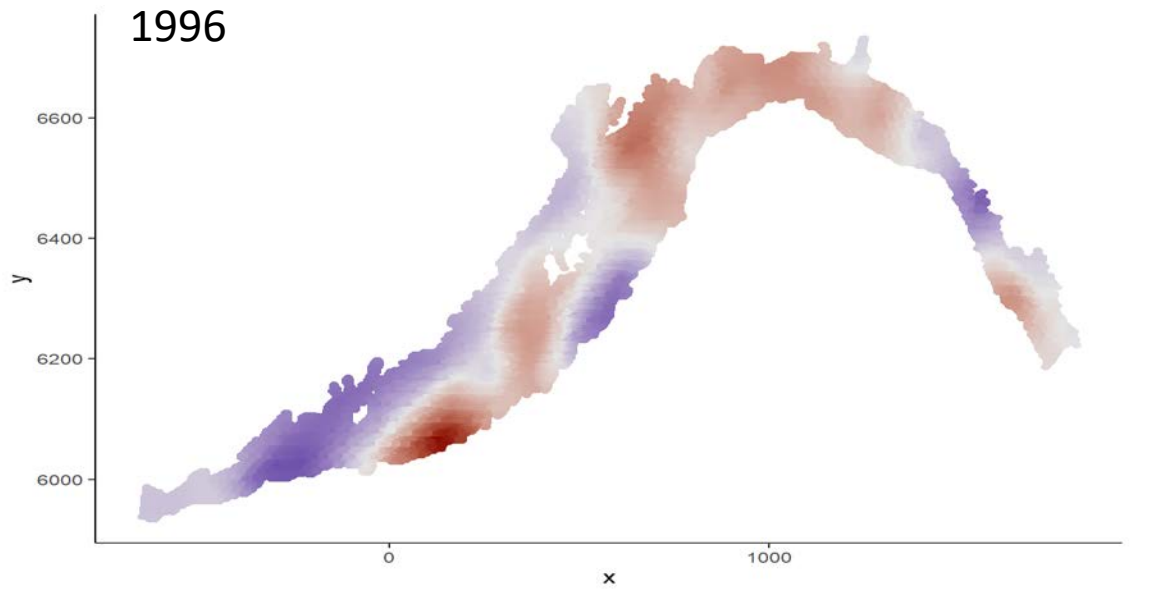
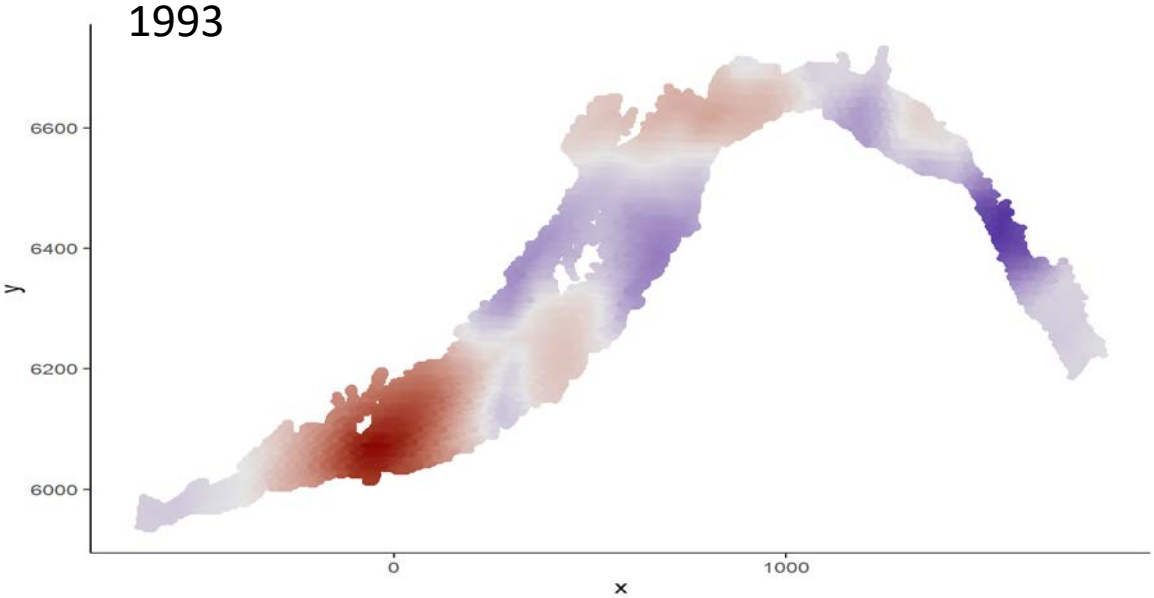


Average Spatial Effect

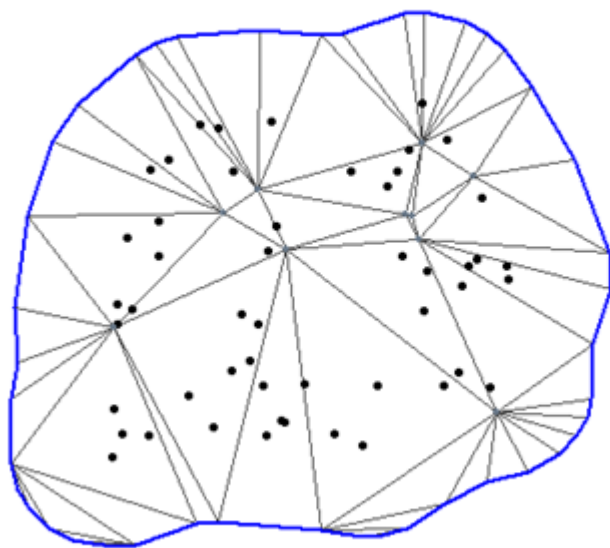


+

Spatio-temporal Effects

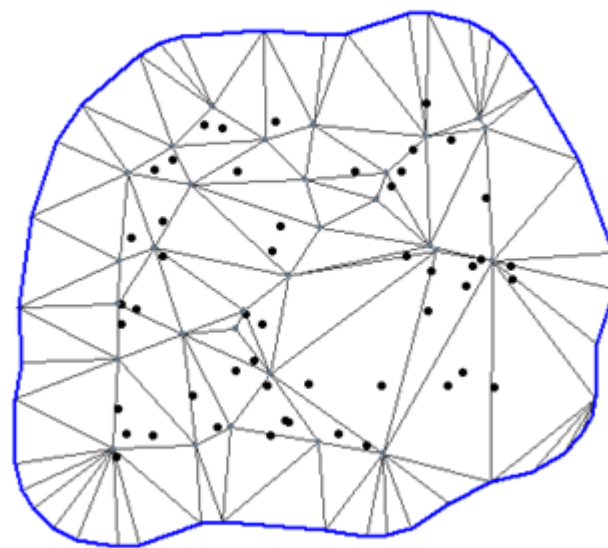


Low Resolution

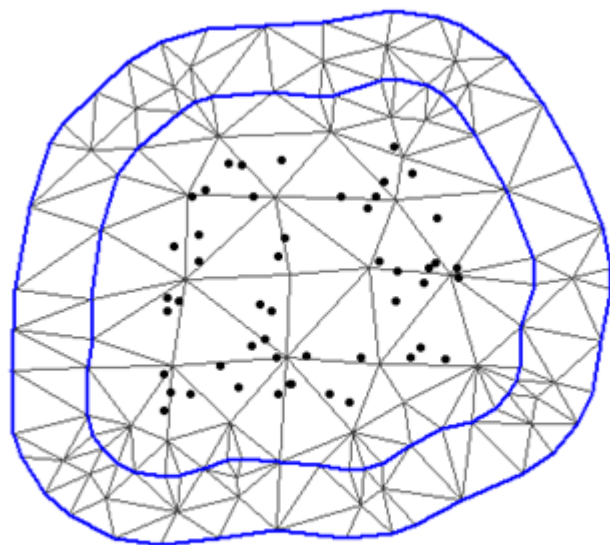


Knots = 10

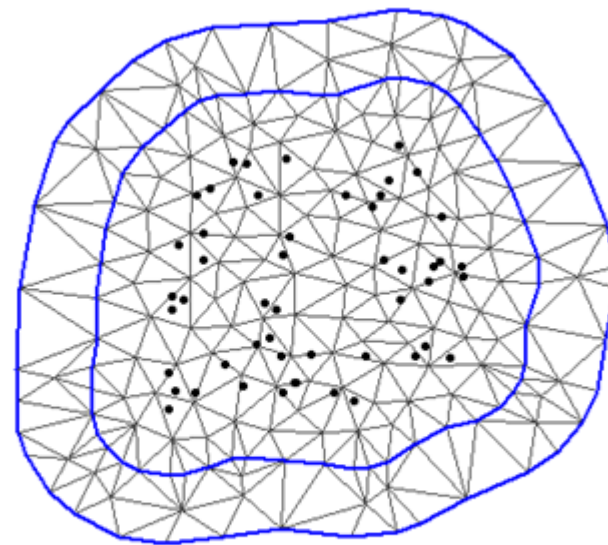
High Resolution



Knots = 30

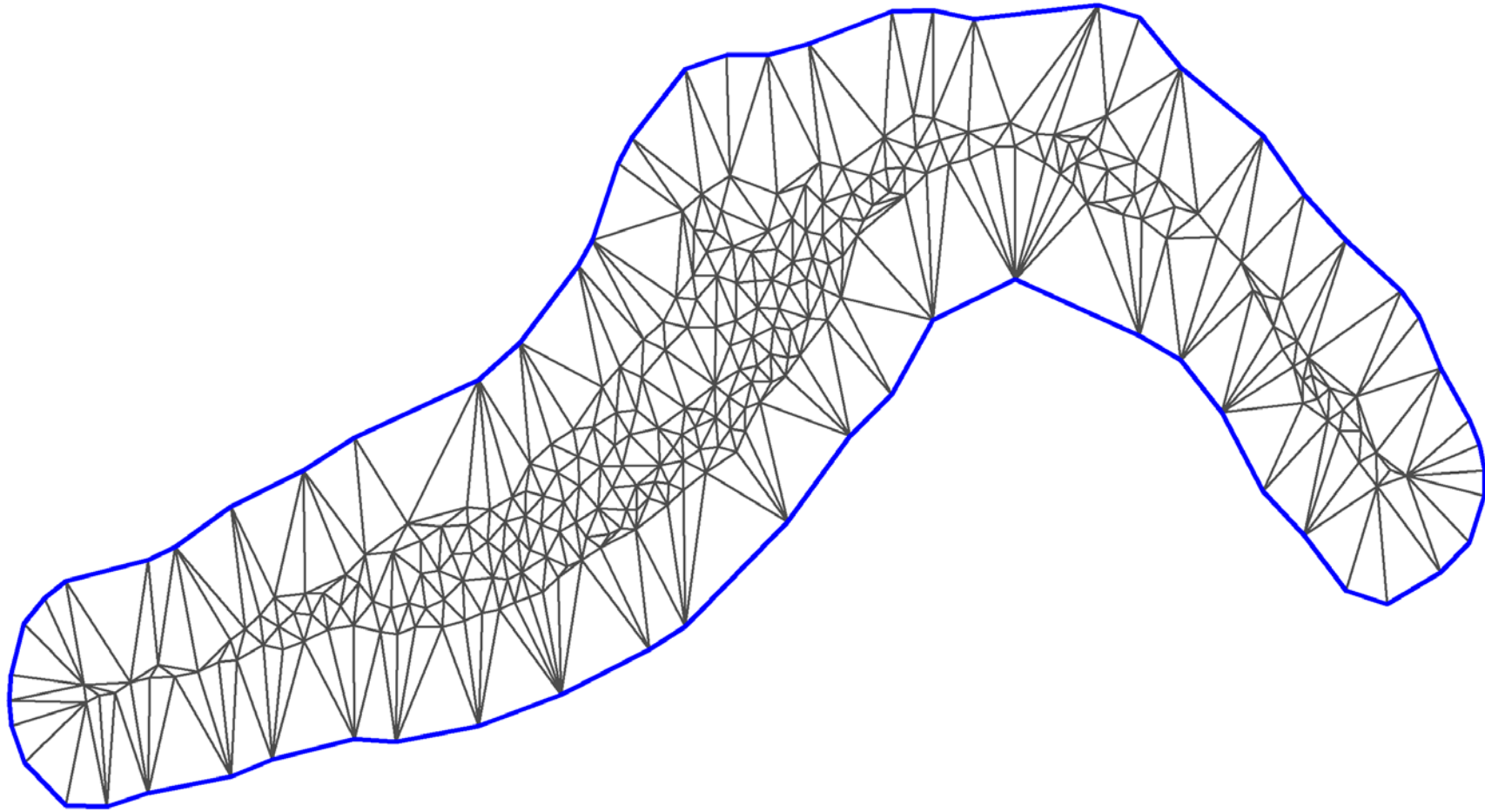


Max Edge = 0.5

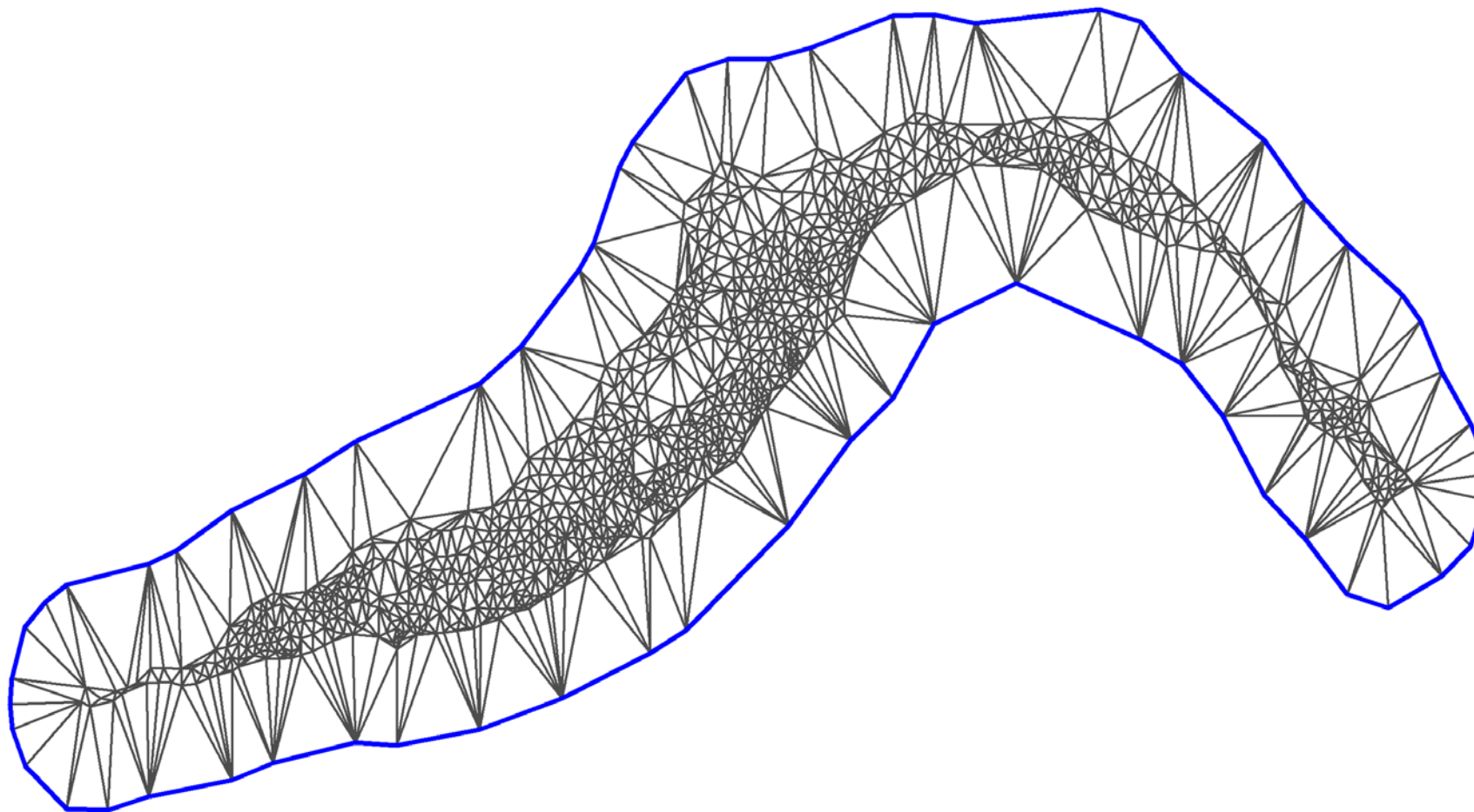


Max Edge = 0.2

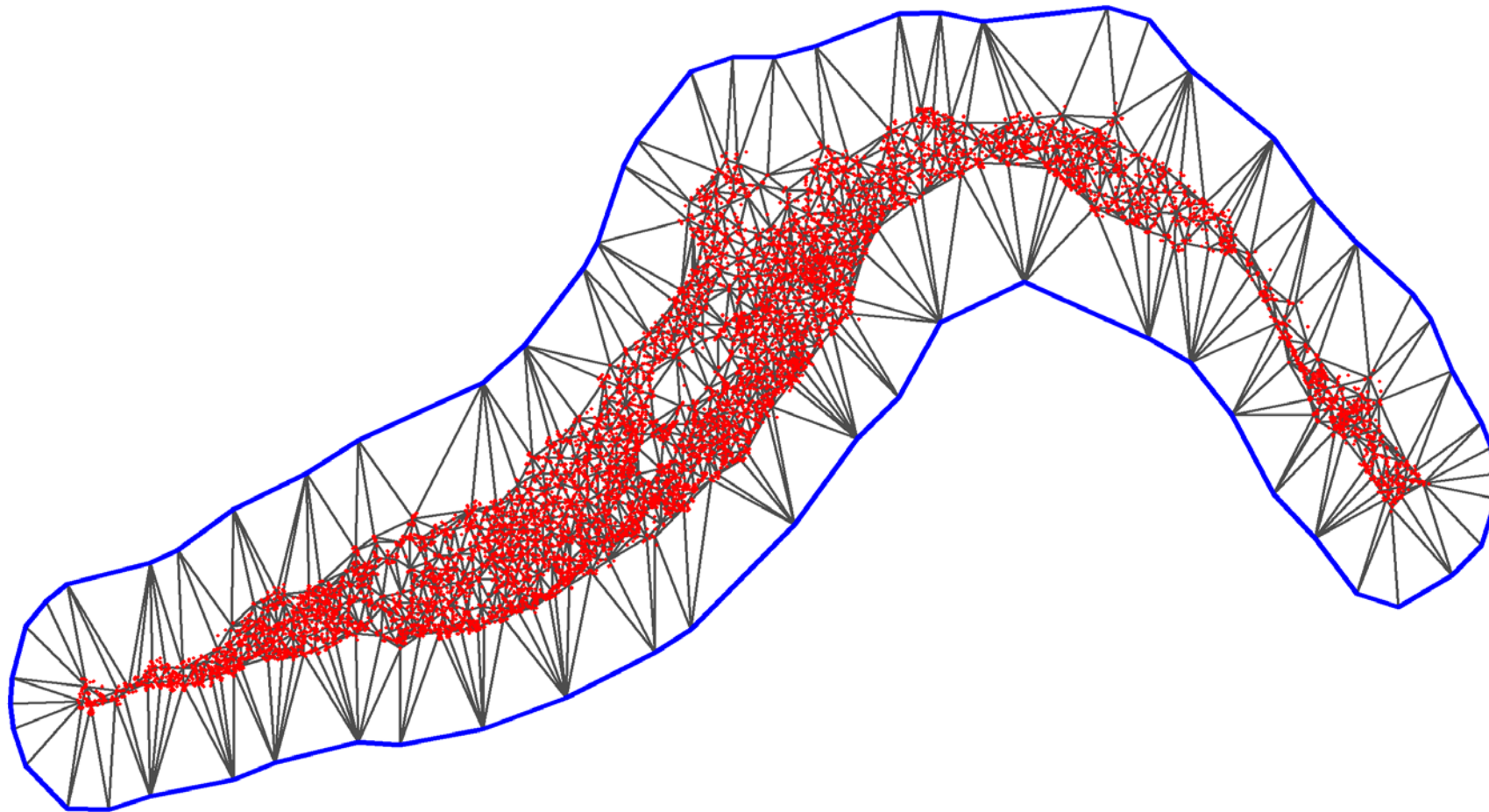
250 Knots



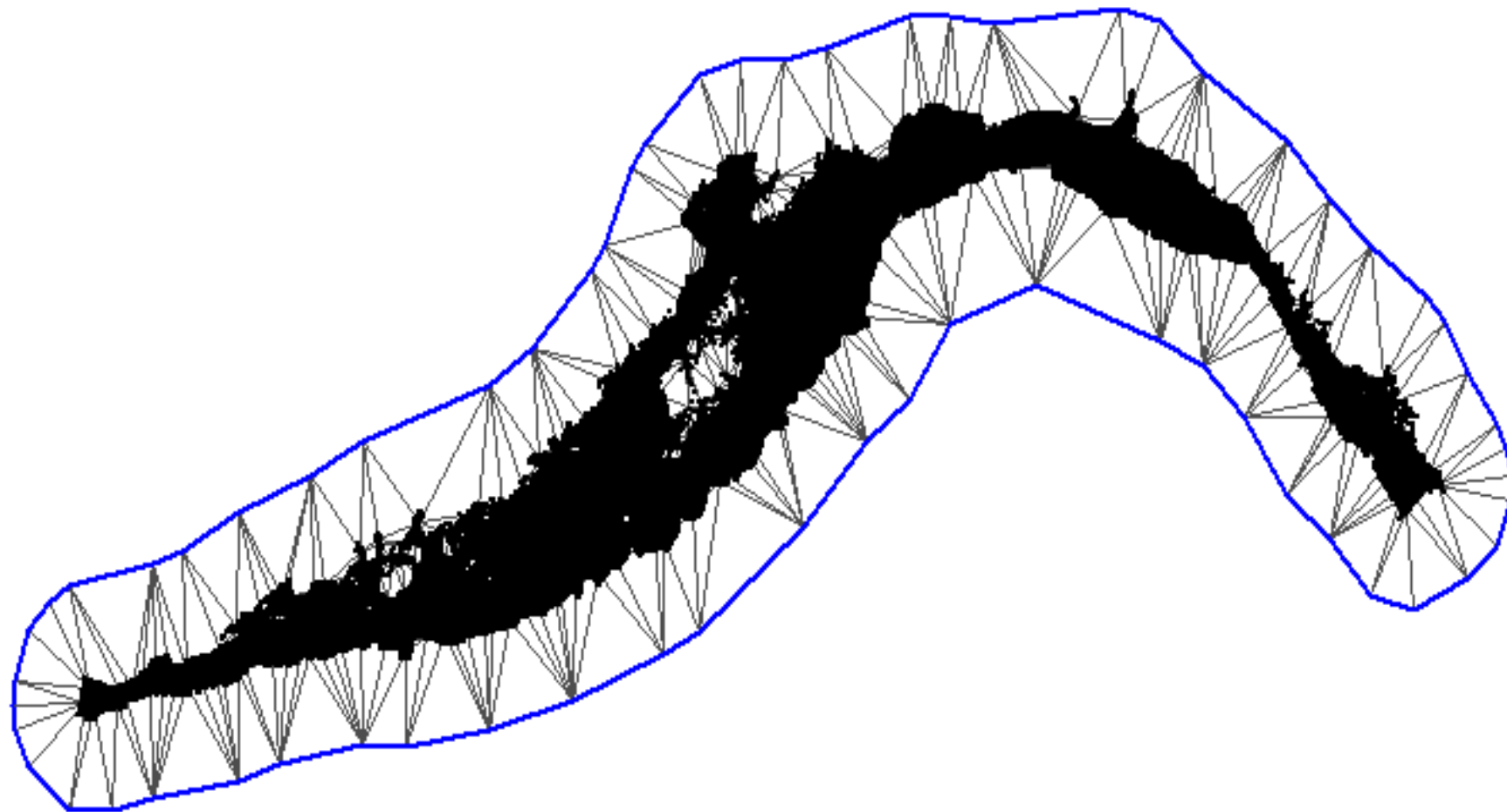
1000 Knots



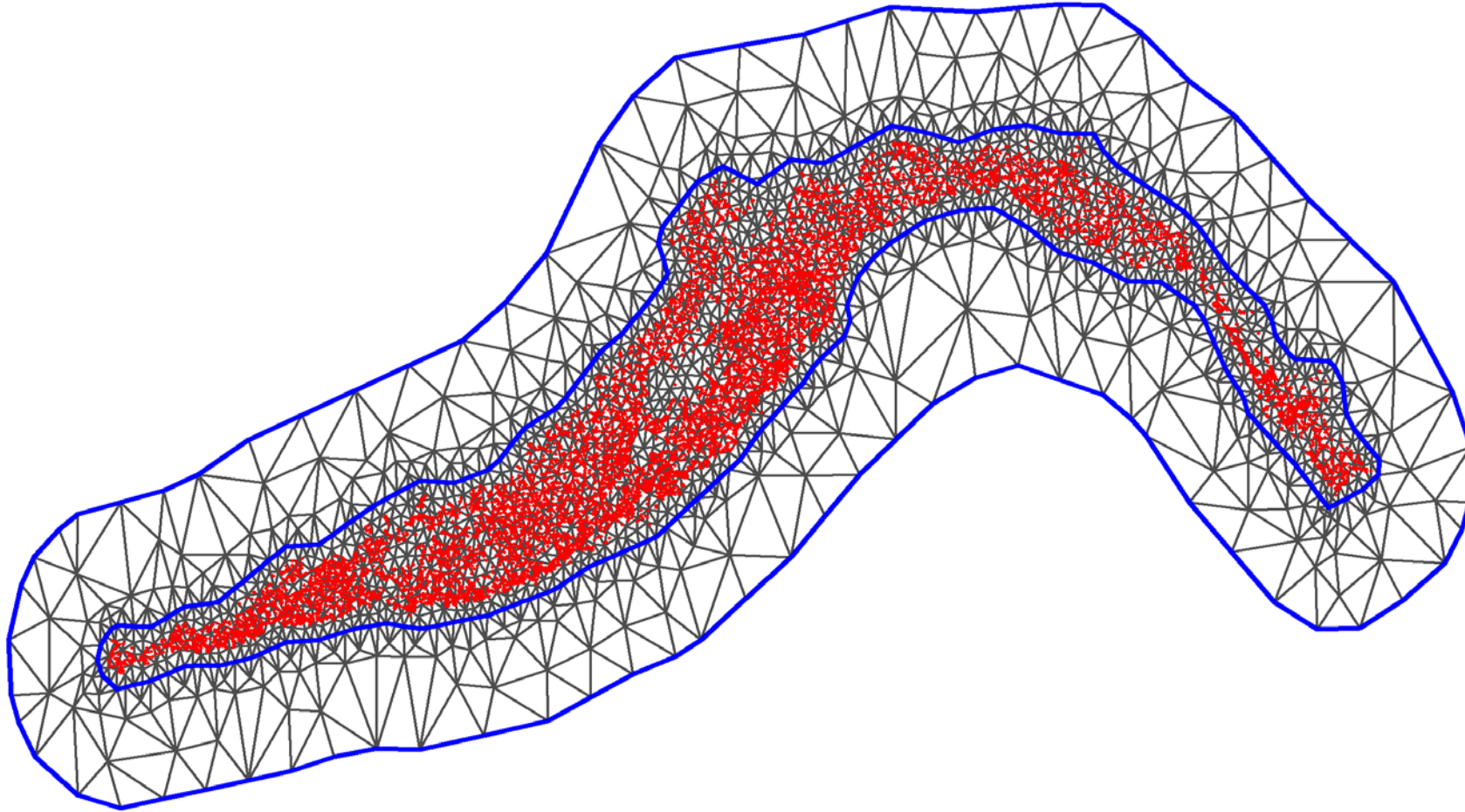
1000 Knots



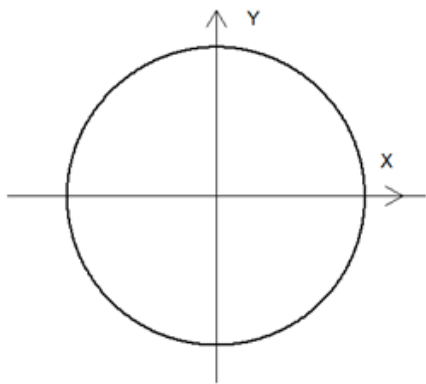
1000 Knots



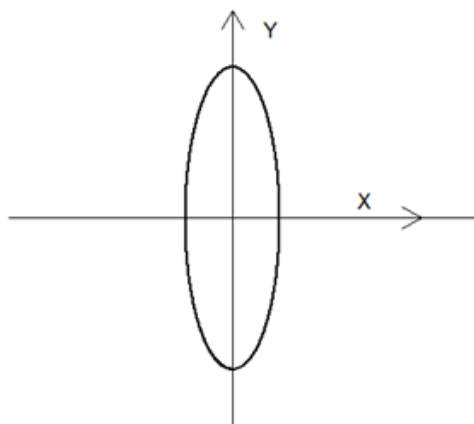
User-Defined Mesh



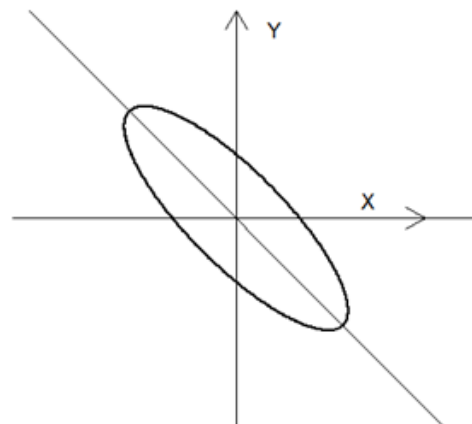
Isotropy



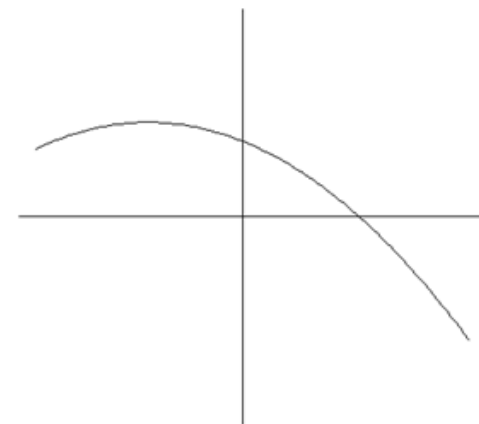
Anisotropy



Rotated Anisotropy

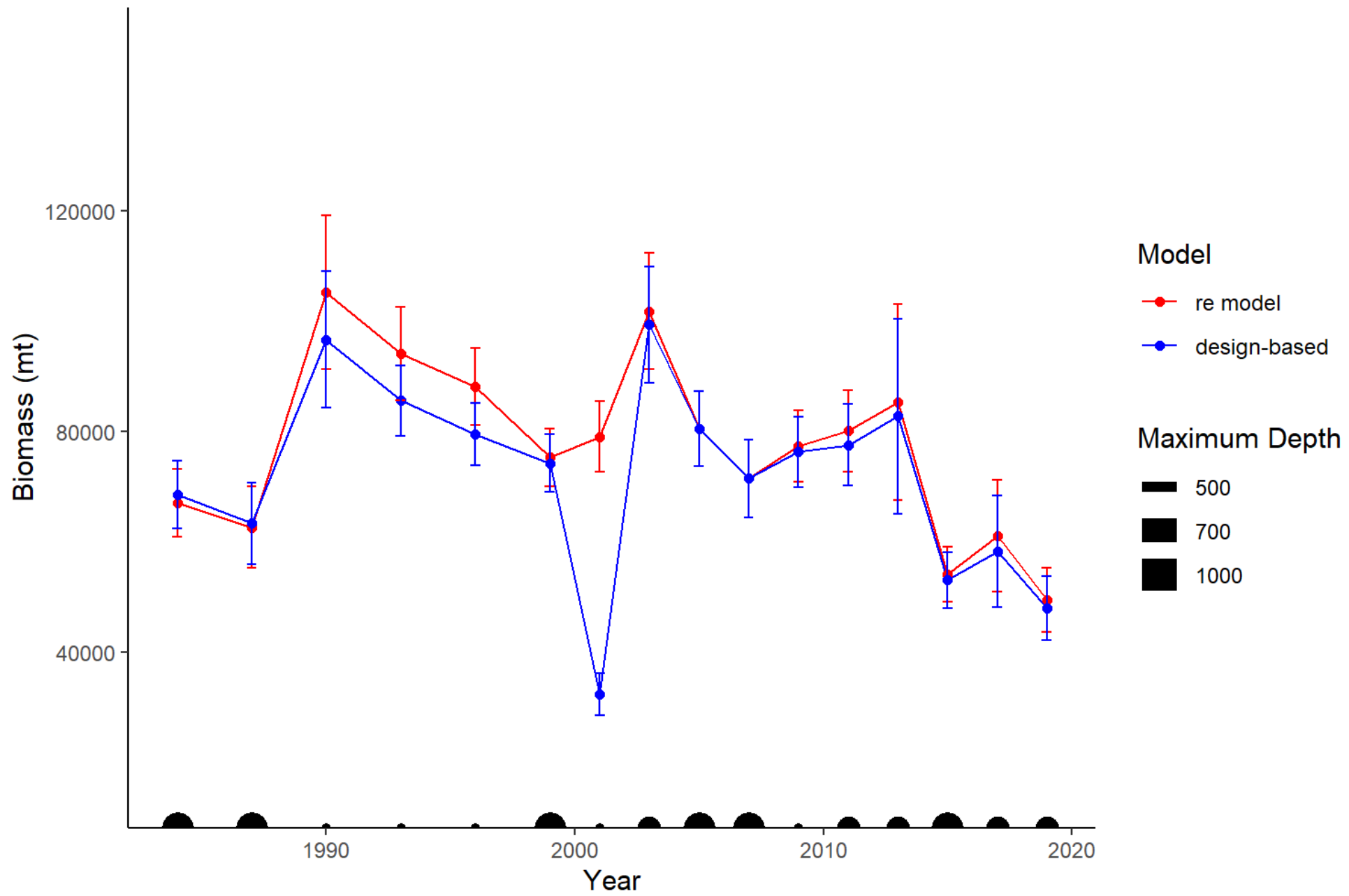


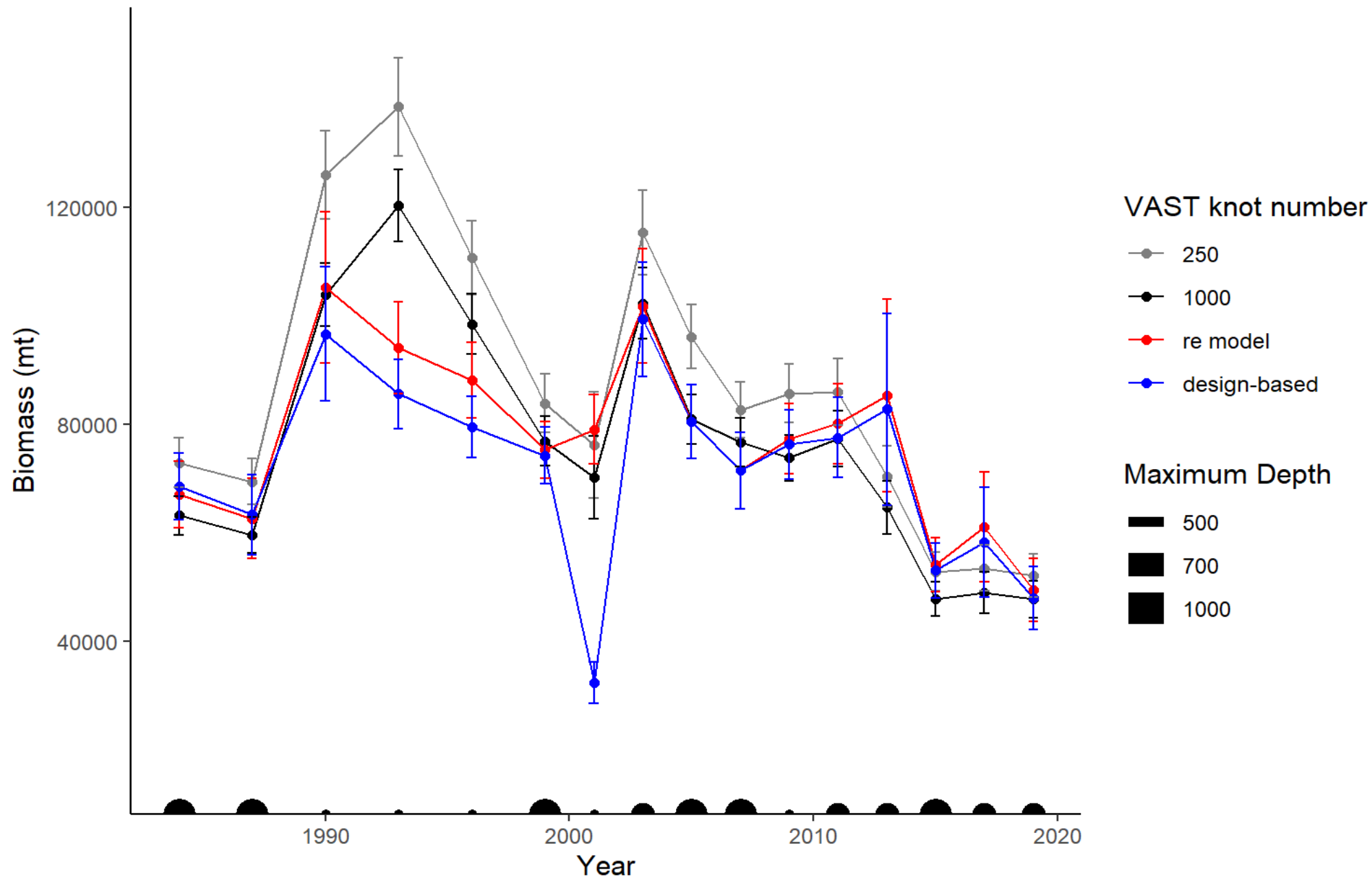
2nd-Order Anisotropy

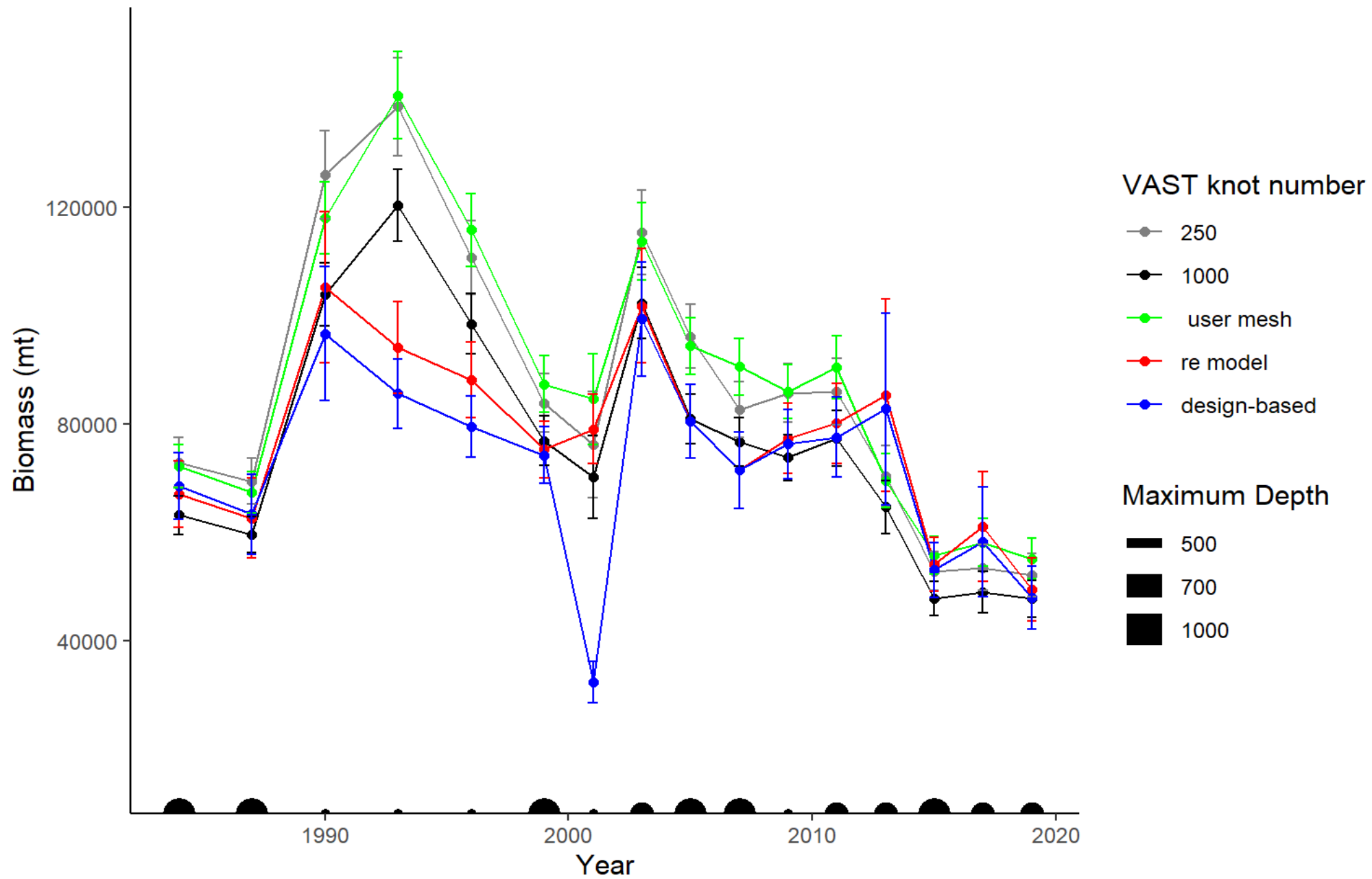


GOA Dover sole VAST results

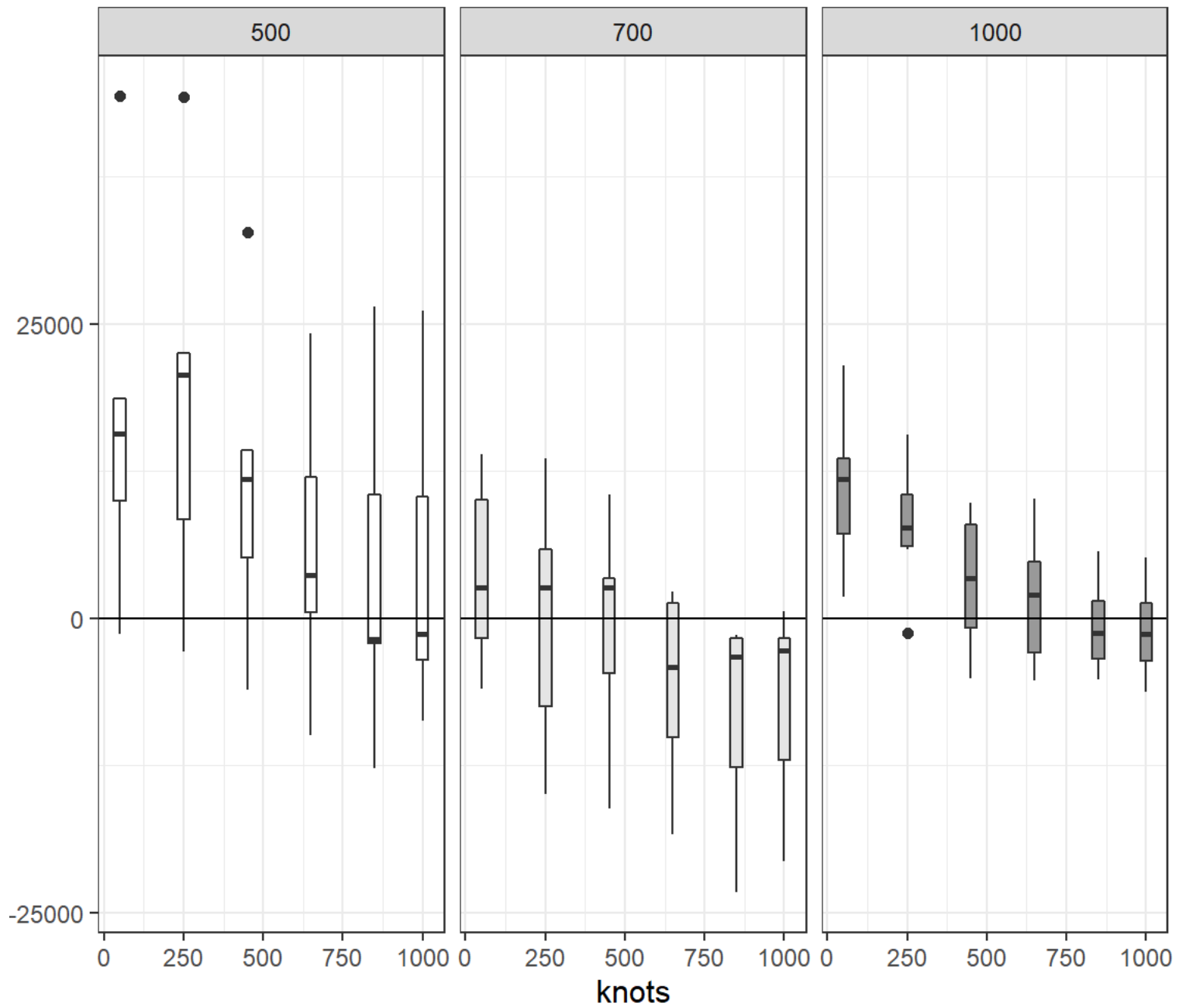
- Models:
 - Design-based
 - RE model
 - VAST using knots:
 - 250
 - 1000
 - VAST with user defined mesh





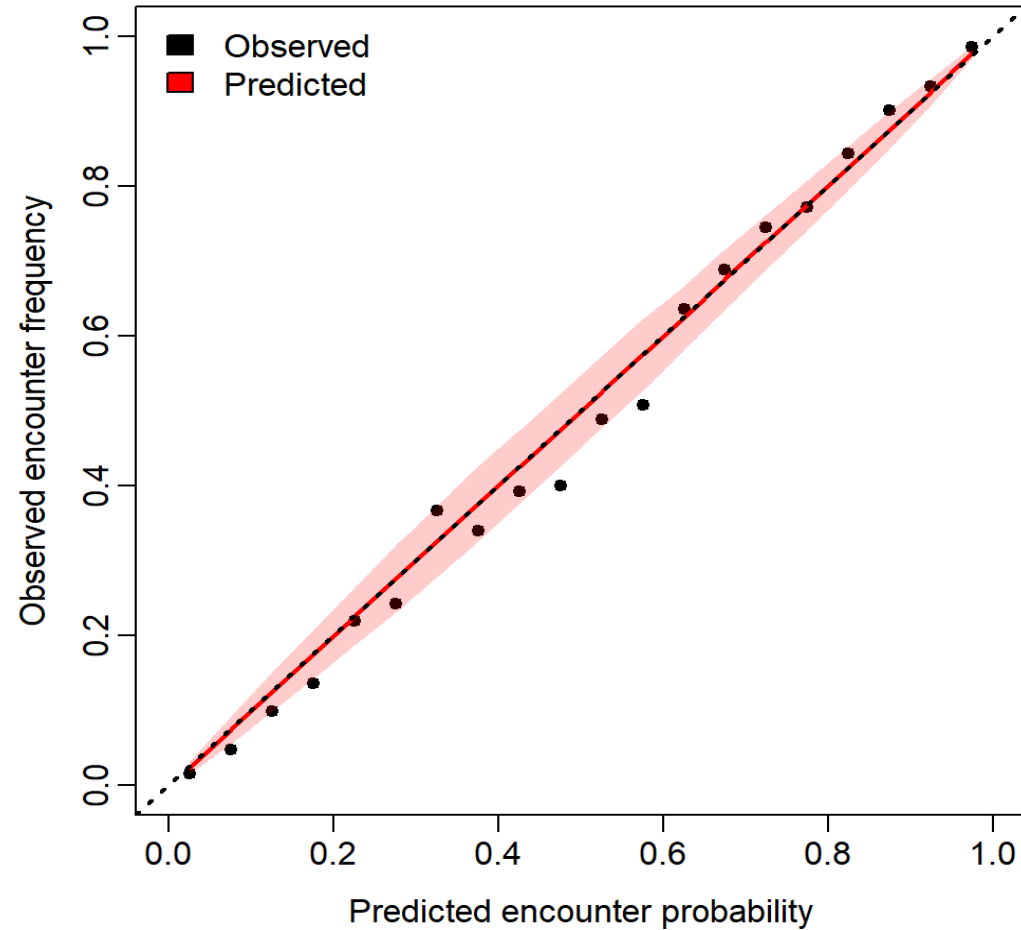


VAST - RE Model

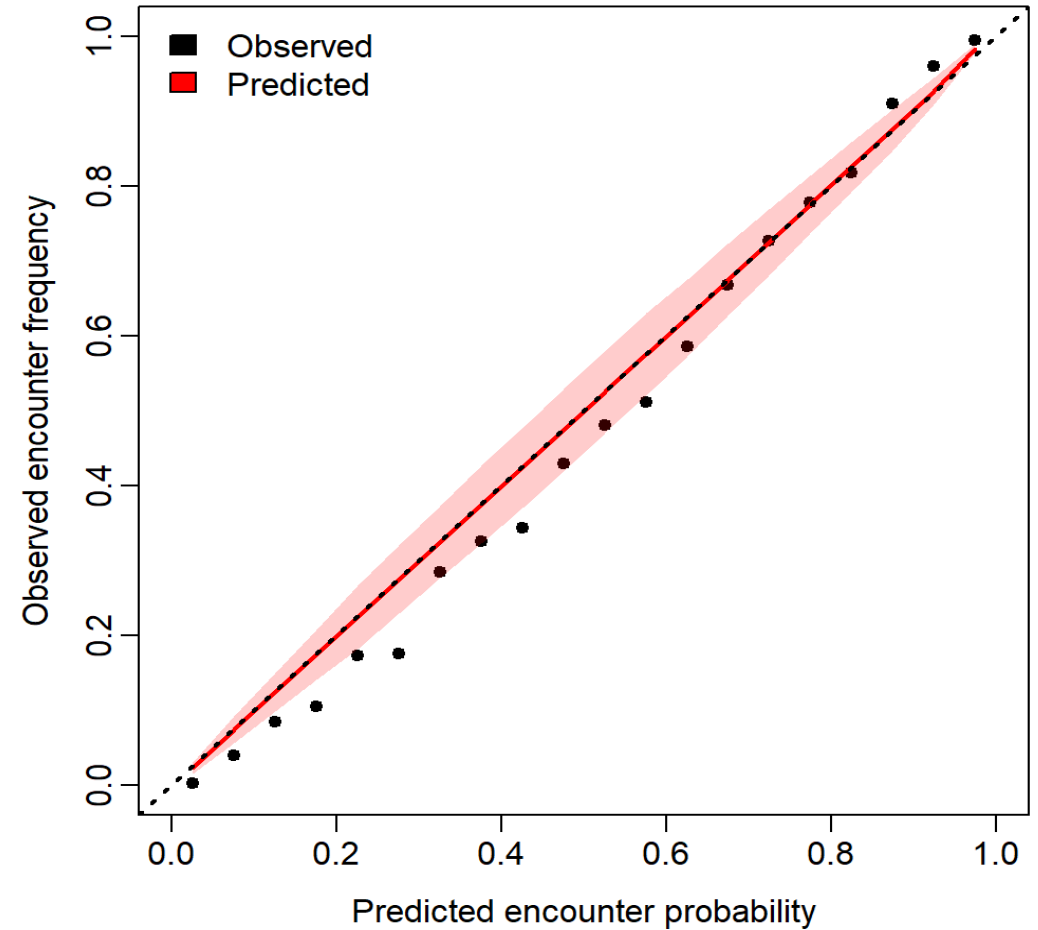


Model Validation – Probability of Encounter

250 Knots



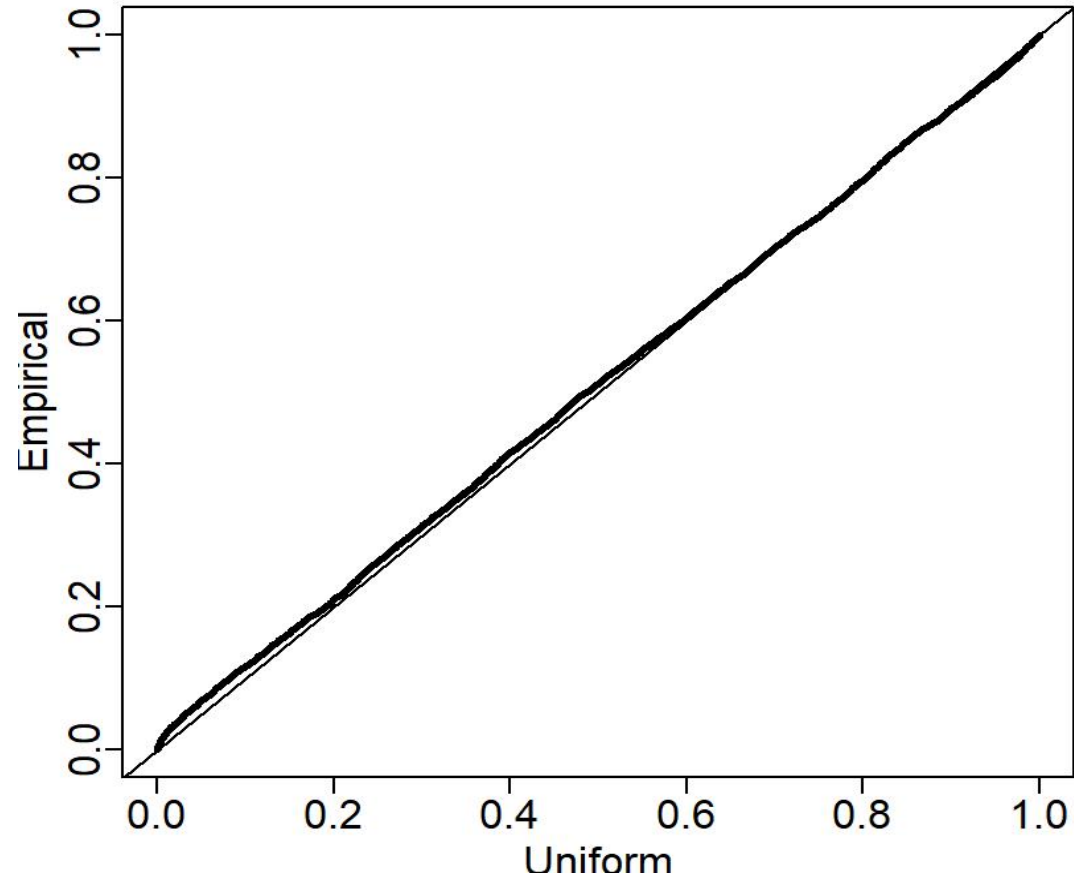
1000 Knots



Model Validation – Probability of Encounter

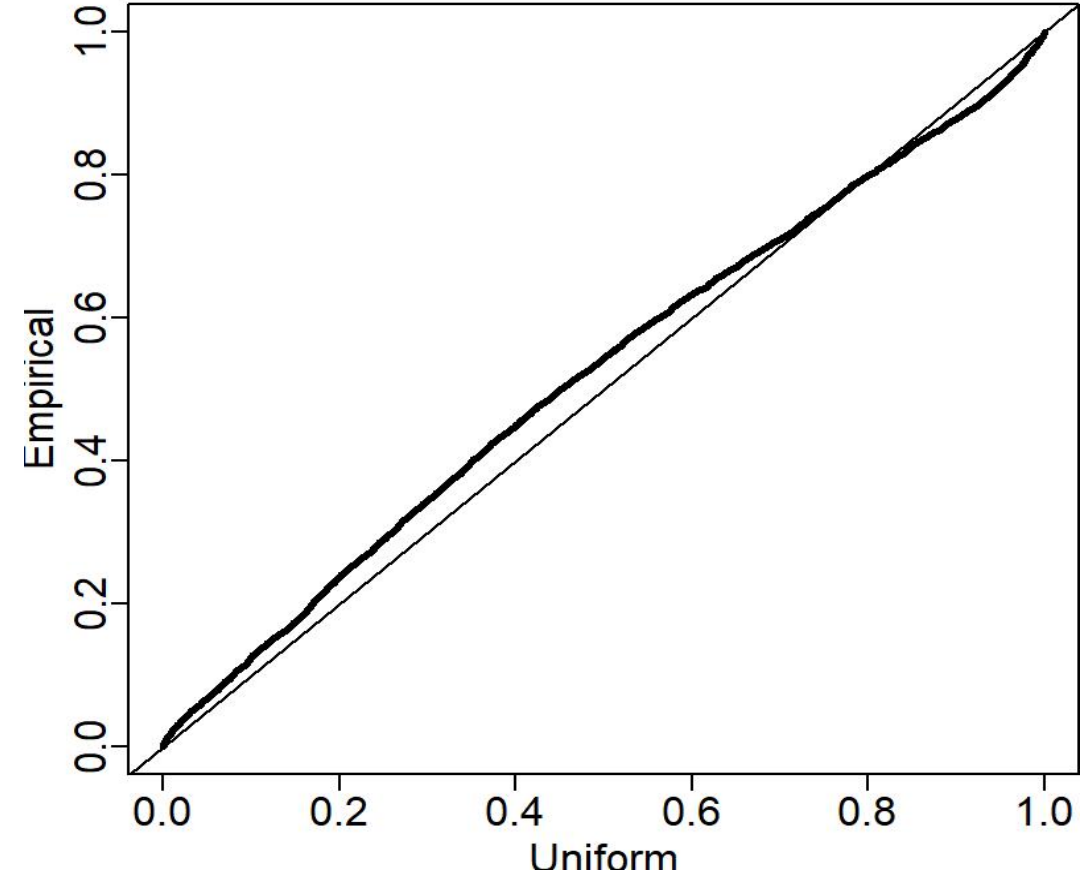
250 Knots

Q-Q plot



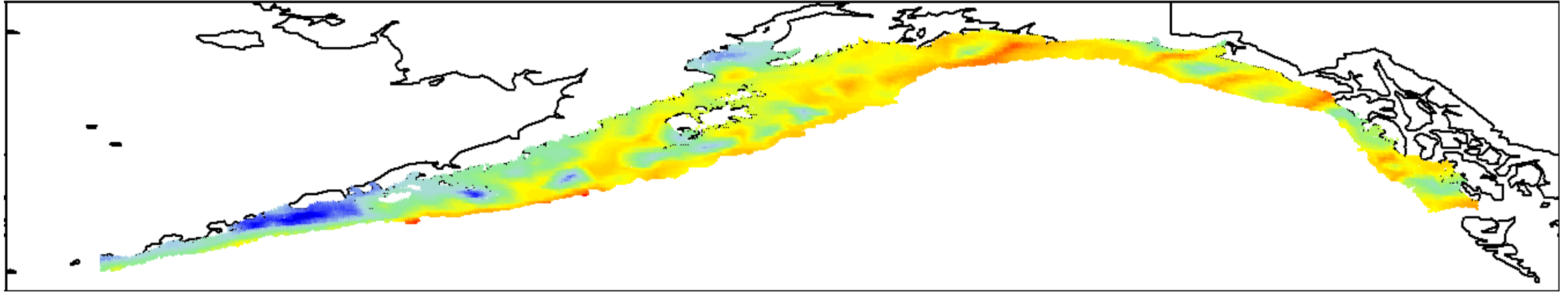
1000 Knots

Q-Q plot

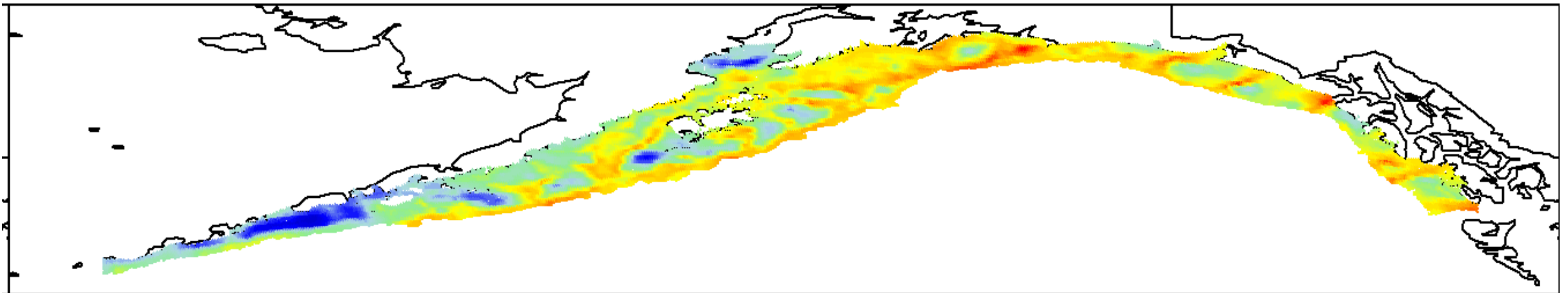


1993 Biomass Density

250 Knots

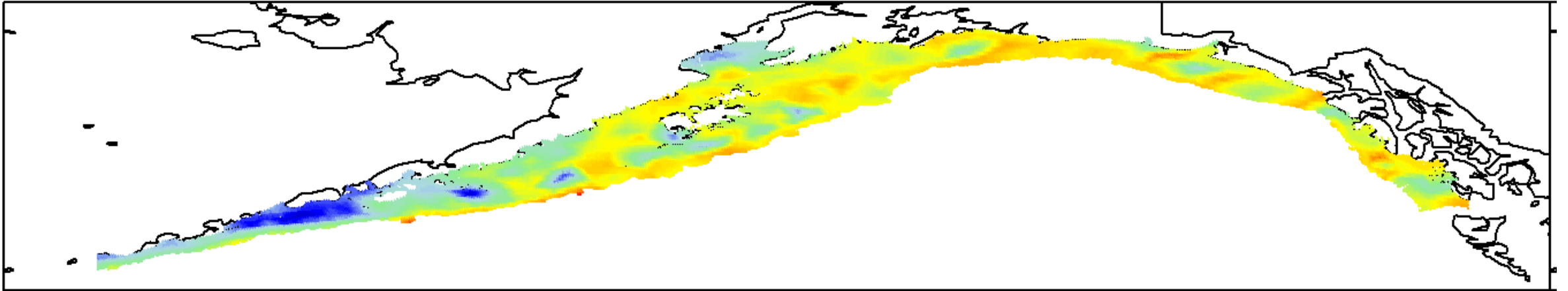


1000 Knots

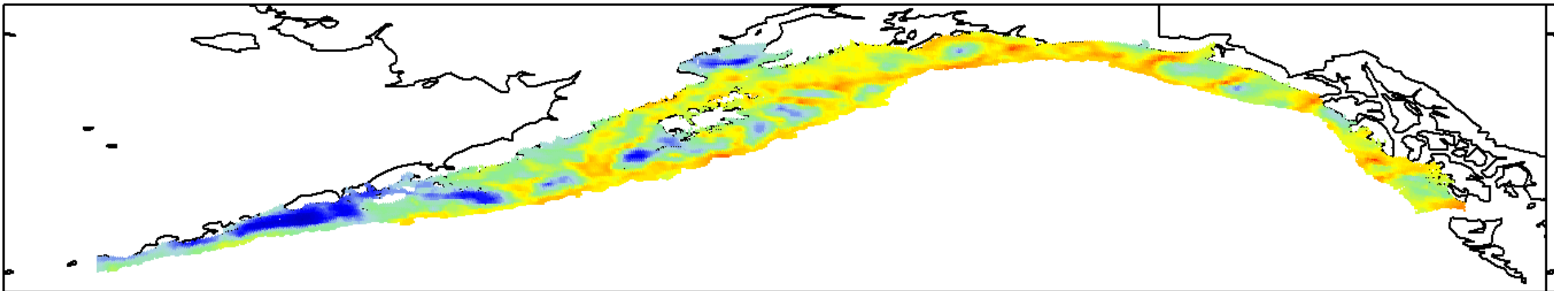


2005 Biomass Density

250 Knots



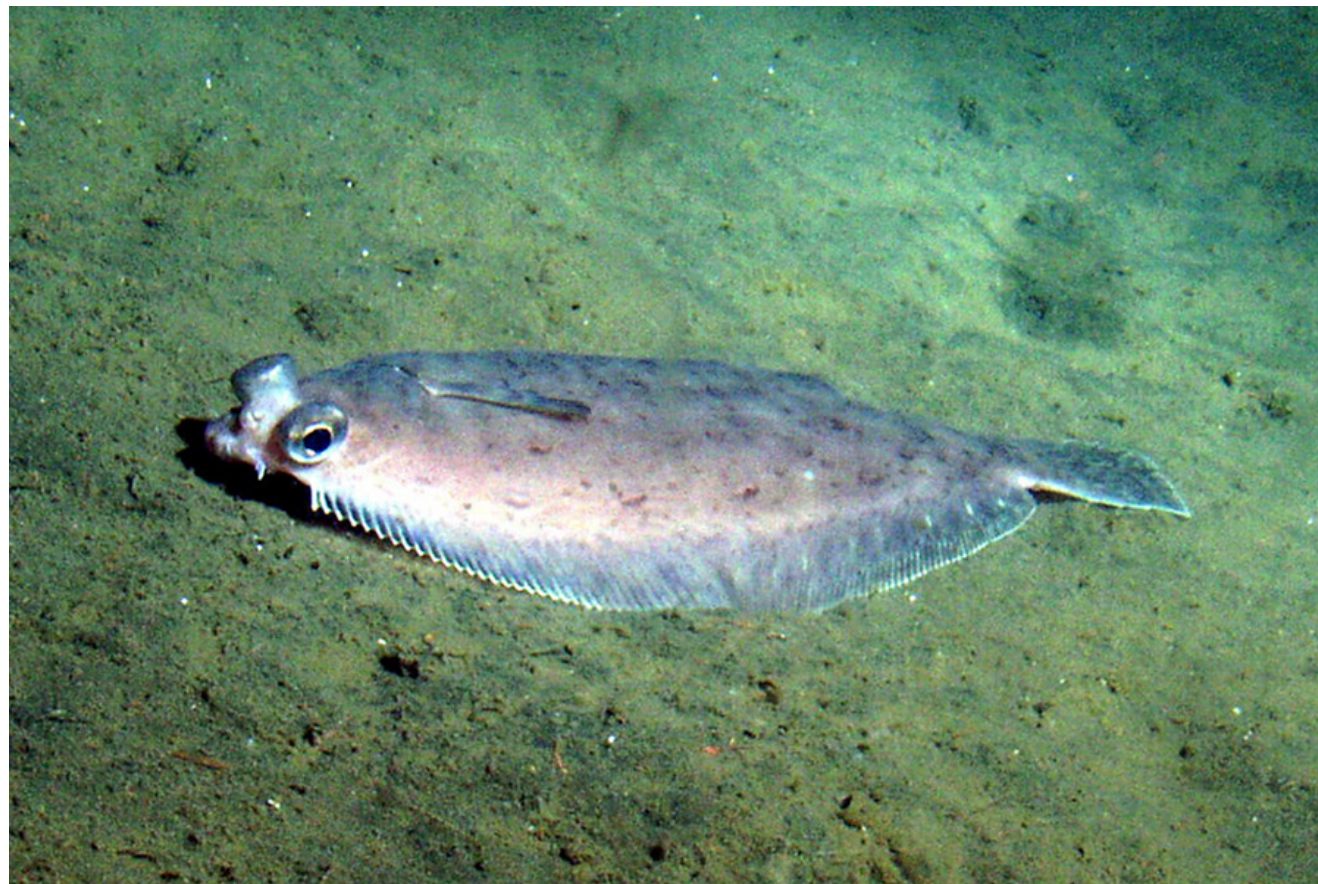
1000 Knots



Recommendations

- Sensitivity to mesh structure
 - Boundaries
 - Knots
- Sensitivity to anisotropy
 - Separate models for Western/Central and Eastern GOA
 - Add Covariates
- Explore VAST Observation model settings

Thank You!



JISAO

