



**NOAA
FISHERIES**

Alaska
Fisheries
Science
Center

Economic Status of the Groundfish Fisheries off Alaska, 2016

Presented by:

Ben Fissel
AFSC Economics and Social
Sciences Research Program (ESSRP)

Sept. 13, 2017

GPT Species Economic Performance Report

- Economic Performance Reports (completed last year in **bold**):
 - BSAI: **pollock**, **Pacific cod**, flatfish complex (yellowfin, rocksole, flathead, arrowtooth) , rockfish (Pac. ocean perch, northern), **Atka mackerel**.
 - GOA: **pollock**, **Pacific cod**, arrowtooth, rockfish (Pac. ocean perch, northern).
 - Combined: **sablefish**.
- EPRs completed last year will be revised to incorporate new data and discuss update market conditions. Rockfish and flatfish EPRs will be completed this year.
- GPT can give feedback discuss:
 - Content: Too much/not enough information? Report too long? Different information?
 - What do we do with these and where do they go?

Economic Status Report, 2016: Content of the Sept. Draft

- Executive Summary: 2016 highlights
- Overview of the Economic Data Tables
 - Information for understanding economic data
- Economic Data Tables
 - Extensively revised
- Economic Indices – figures and tables only
 - Summary indices of value, catch/production, and price by region, at-sea/shoreside, species, gear, product type.



NOAA
FISHERIES

Economic Status Report, 2016: Additional Final Draft Content (Nov.)

- Report Card Metrics
- Plan Team Reports
- Economic Indices – analysis
- Wholesale and ex-vessel price projections
- Market Profiles
- Catch share performance metrics
- Amendment 80 Economic Data Report
- Amendment 91 Economic Data Report
- Communities Section
- Recent and ongoing ESSRP research and publications

Revisions to Economic Data Tables

Objectives of the revision:

- Reduce duplicative reporting of data readily available through other sources.
- Reduce the number of tables.
- Focus on better stratifications for commonly used tables.
- Respond to requests for more highly stratified data.

Changes to the economic data tables:

- Reorganized tables to AK summary then focus on BSAI and GOA.
- Removed most discard and prohibited species catch (PSC) tables.
- Focus on retained catch rather than total catch.
- Species specific economic data for flatfish and rockfish.

Tables are still subject to change between now and Nov.

Revised Economic Data Tables

<p>All Alaska Summary Tables 1 – 10</p>	<p>Catch (total and retained) Summarized discards and PSC Ex-vessel value 1st wholesale production and revenue Vessel counts</p>
<p>Bering Sea and Aleutian Islands Tables 11 – 26</p>	<p><u>Ex-vessel:</u> Retained catch, prices and value (with specific flatfish and rockfish species). Retained catch by target. Value metrics by fleet</p> <p><u>1st wholesale:</u> Production, prices, and value (with specific flatfish and rockfish species). Production value metrics by processor group</p>
<p>Gulf of Alaska Tables 27 - 42</p>	<p><u>Effort:</u> Vessel counts, average length, tonnage, CV and CP fishing weeks, CV and CP crew weeks.</p>
<p>Pacific halibut Tables H1 – H10</p>	<p>Catch PSC Ex-vessel value, price 1st wholesale production, value and price Effort: vessel counts, vessel days, crew days</p>

Where to find the data I need?

\\nmfs\akc-public\Dropbox\Fissel\EconomicSAFEData2017

Open Tablenames_econGroundfishSafe_SeptDraft.csv
To get an excel sheet matching table names to file names.

A	B
List of Tables	File name
1 Groundfish catch in the commercial fisheries of Alaska by area and species, 2007-2016 (1,000 metric tons, round weight)	gftotcatch_ak.csv
2 Catch of species other than groundfish in the domestic commercial fisheries, 2002-2016 (1,000 metric tons)	nongftotcatch_ak.csv
3 Groundfish retained catch off Alaska by area, vessel type, gear and...	gftretcatch_ak.csv
6 Real ex-vessel value of the catch in the domestic commercial fisheries off Alaska by species group, 2002-2016; calculations based on COAR (\$ millions, base year = 2016)	rexvval_ak.csv
7 Production and real gross value of groundfish and non-groundfish	rwsval_ak.csv

Currently only accessible to AFSC.

The data will be moved to and accessible through the website by November.

Example web application

Ex-vessel value of the groundfish catch off Alaska, 2003-2015

Species

Area

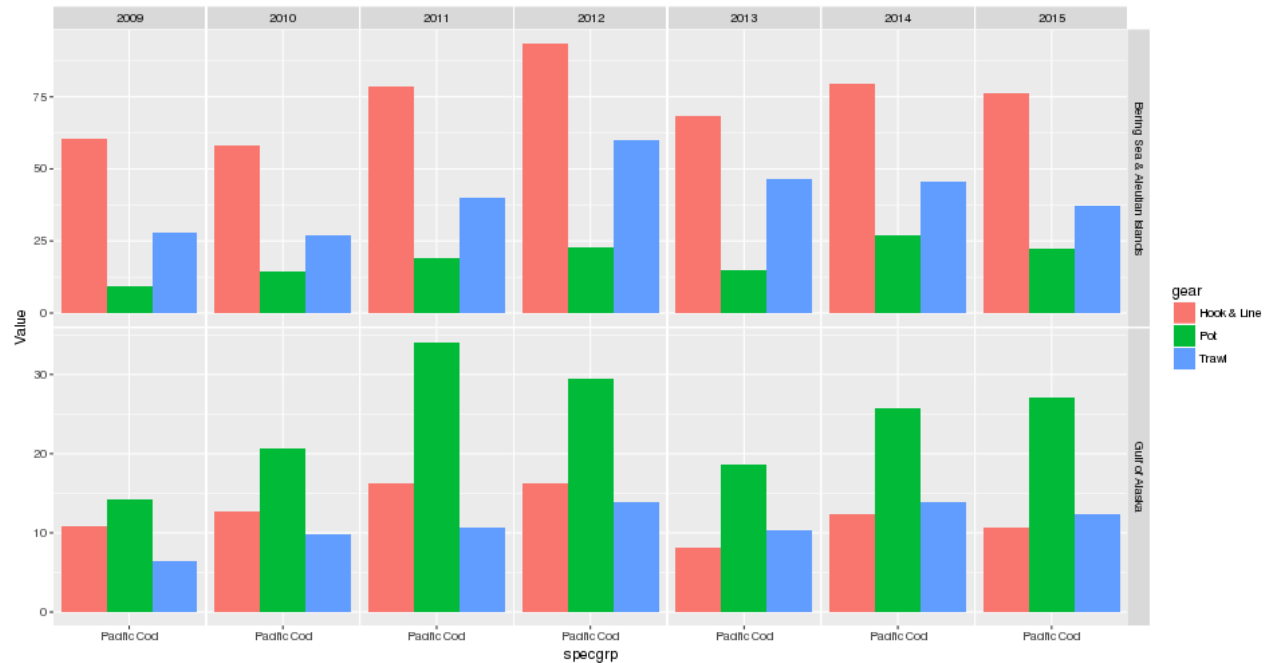
Stratify by:
 Gear
 Sector

Gear

Sector

Year

For details see Table 19 of the Economic Status of the Groundfish Fisheries off Alaska, 2015.



specgrp	zone	gear	sector	2009	2010	2011	2012	2013	2014	2015
Pacific Cod	Bering Sea & Aleutian Islands	Hook & Line	All Sectors	60.60	58.20	78.70	93.70	68.20	79.40	76.30
Pacific Cod	Bering Sea & Aleutian Islands	Pot	All Sectors	9.40	14.60	19.00	22.60	15.00	27.00	22.40
Pacific Cod	Bering Sea & Aleutian Islands	Trawl	All Sectors	27.90	27.00	40.00	59.80	46.60	45.40	37.30
Pacific Cod	Gulf of Alaska	Hook & Line	All Sectors	10.90	12.70	16.20	16.30	8.10	12.30	10.60
Pacific Cod	Gulf of Alaska	Pot	All Sectors	14.30	20.60	34.10	29.50	18.70	25.80	27.10
Pacific Cod	Gulf of Alaska	Trawl	All Sectors	6.40	9.90	10.70	13.90	10.40	13.90	12.30

<http://pserv.psmfc.org:4949/ECON-GF-SAFE/table19/>

Note: this application is still under construction.

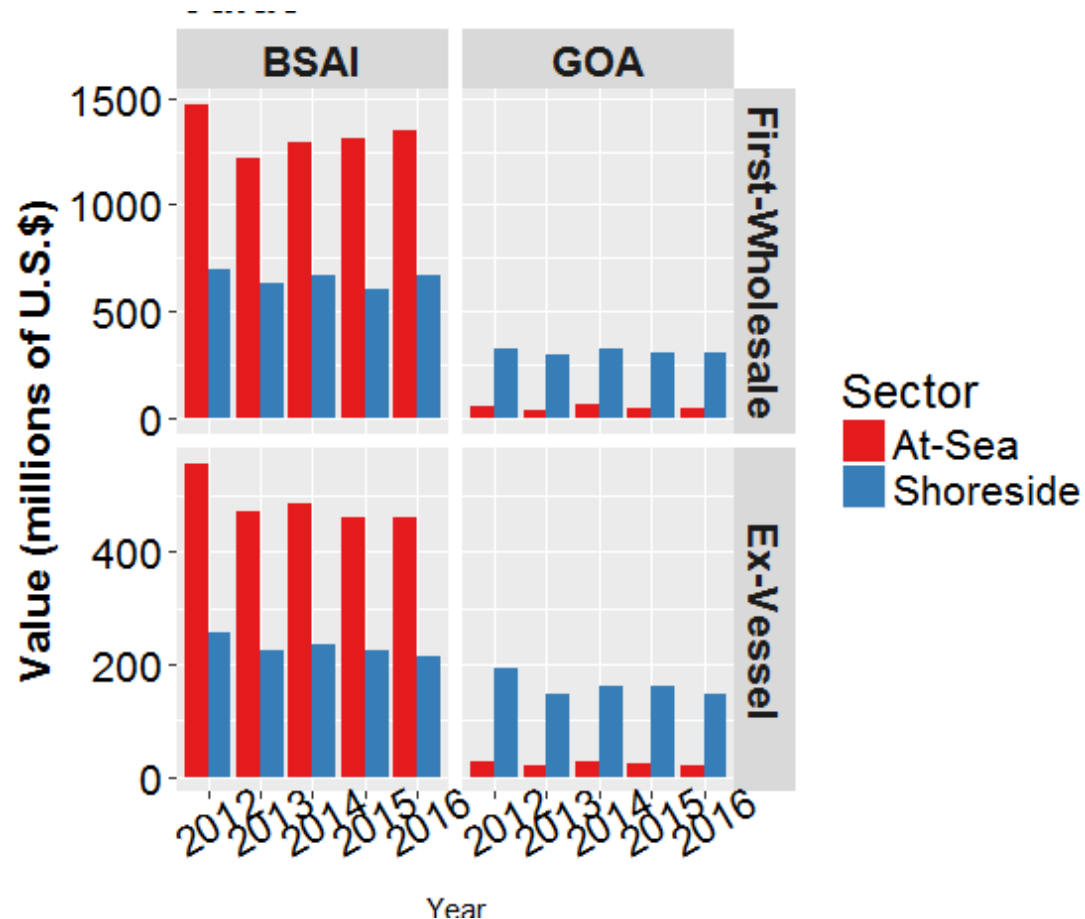
Alaska's Groundfish Fisheries in 2016

Total catch: 2.3 million t
(up 2.5%)

Value showed little
change across
regions and sectors

Wholesale value:
\$2.38 billion (up 4%)

Ex-vessel value:
\$875 million (down 3.4%)



Percent change adjusted for inflation.

Values in figure nominal (not adjusted for inflation)



Economic Status Report, 2016: GPT Topics for Comment



NOAA
FISHERIES

The Economic Status Report serves many purposes. Among them is to provide information to the Plan Team.

- Economic Performance Reports.
- Changes to the economic data tables stratification and structure.
- Data visualization tools.

Economic data for 2016 are still being finalized and validated (typically price and value).

- We invite feedback -- Ben.Fissel@noaa.gov

BSAI Economic Indices

Species

- Value decreased:
 - Rockfish
- Value increased:
 - Pollock
 - Pacific cod
 - Flatfish
 - Atka mackerel

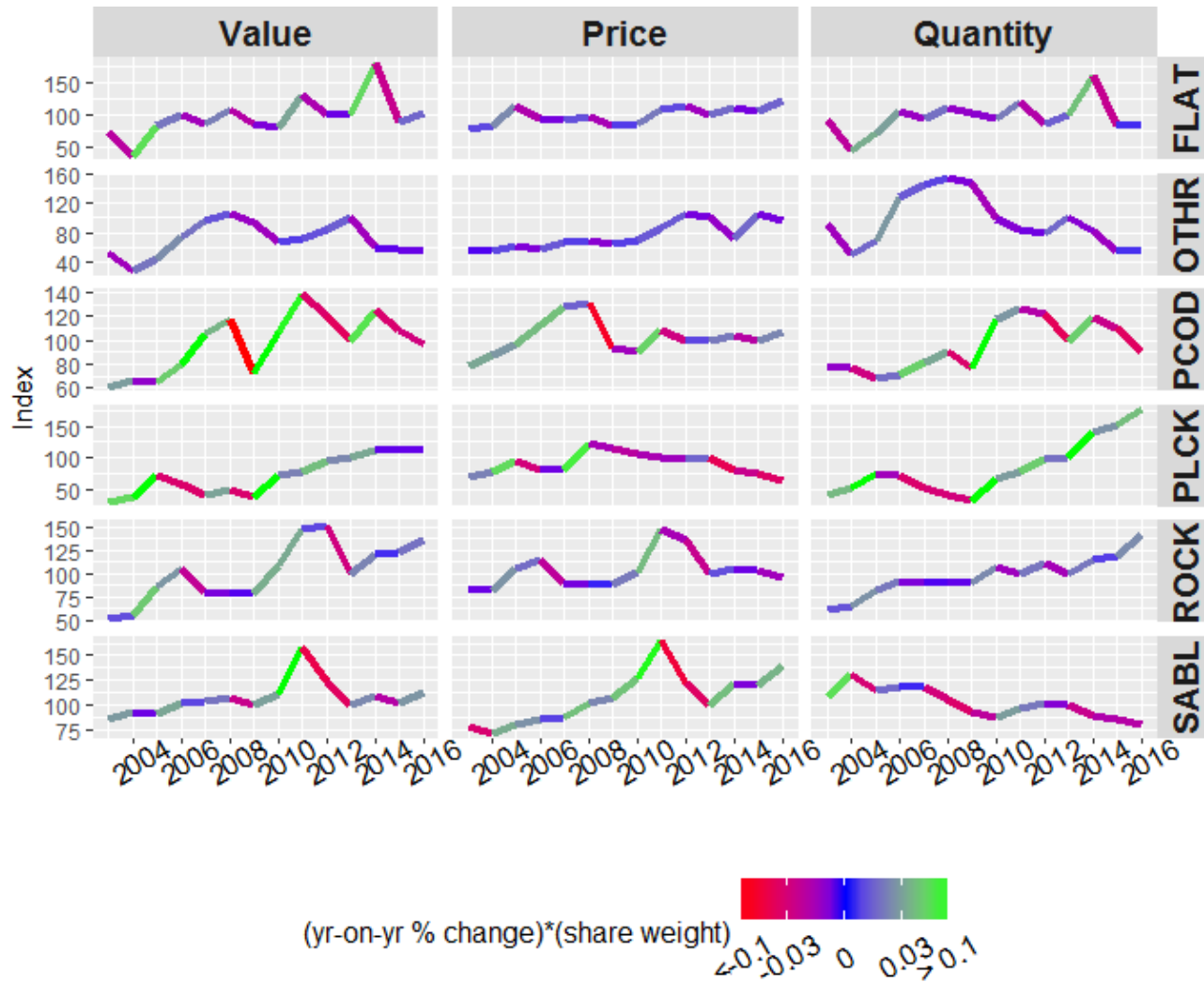


Values are nominal (not adjusted for inflation)

GOA Economic Indices

Species

- Value decreases:
 - Pacific cod
- Value increased:
 - Rockfish
 - Sablefish
 - Flatfish
- No significant change
 - Pollock

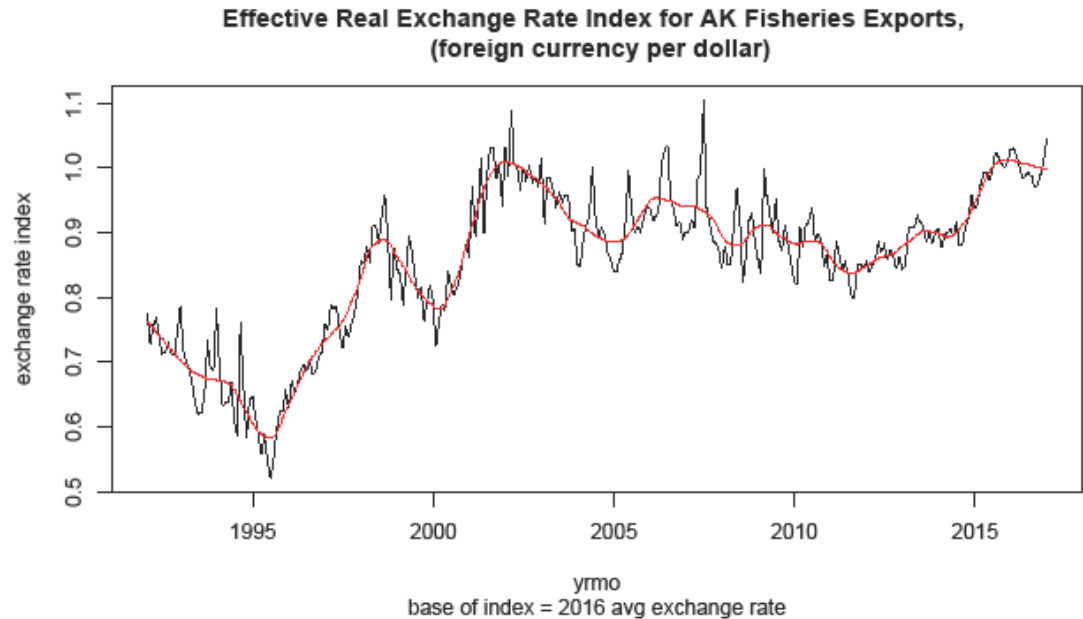


Values are nominal (not adjusted for inflation)

Export Market

Exports of AK Groundfish
Species from WA and AK

	Quantity K mt	Value M US\$	Price/lb US\$
2012	535.4	\$ 1,565	\$ 1.326
2013	605.6	\$ 1,611	\$ 1.207
2014	662.0	\$ 1,758	\$ 1.205
2015	649.5	\$ 1,741	\$ 1.216
2016	644.6	\$ 1,685	\$ 1.185



Real effective exchange rate index shows slightly more favorable exchange rates in 2016. Nominal export price fell slightly.