

# Supplemental information on BSAI Herring PSC and distribution

C-6 supplemental

# BSAI Herring Savings Areas

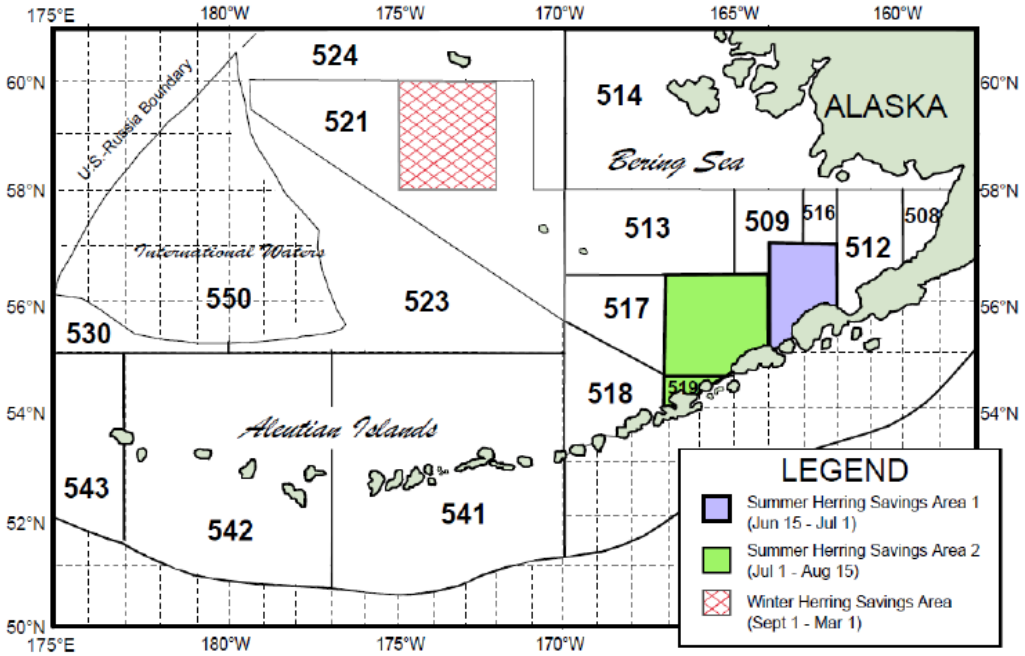
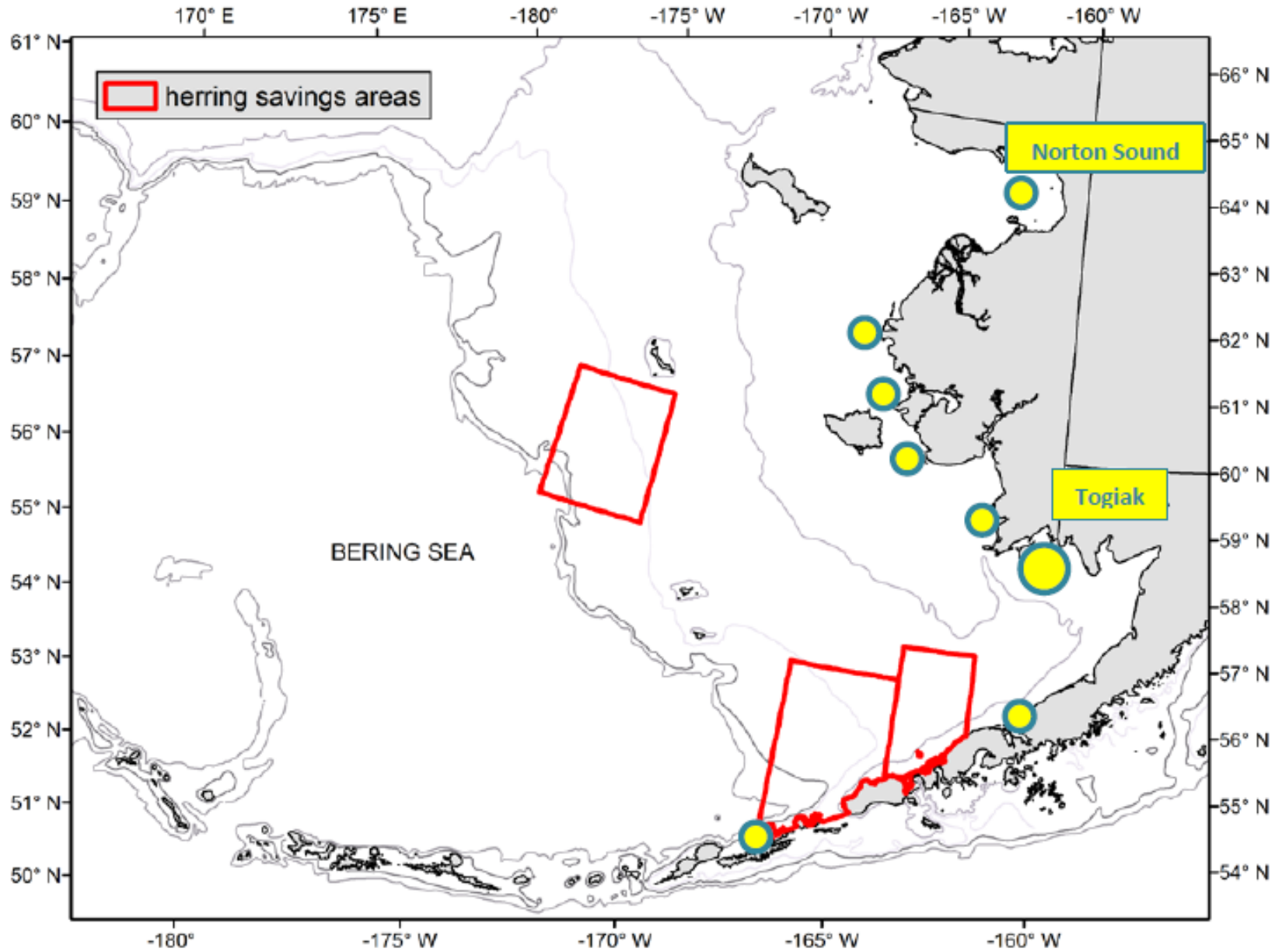


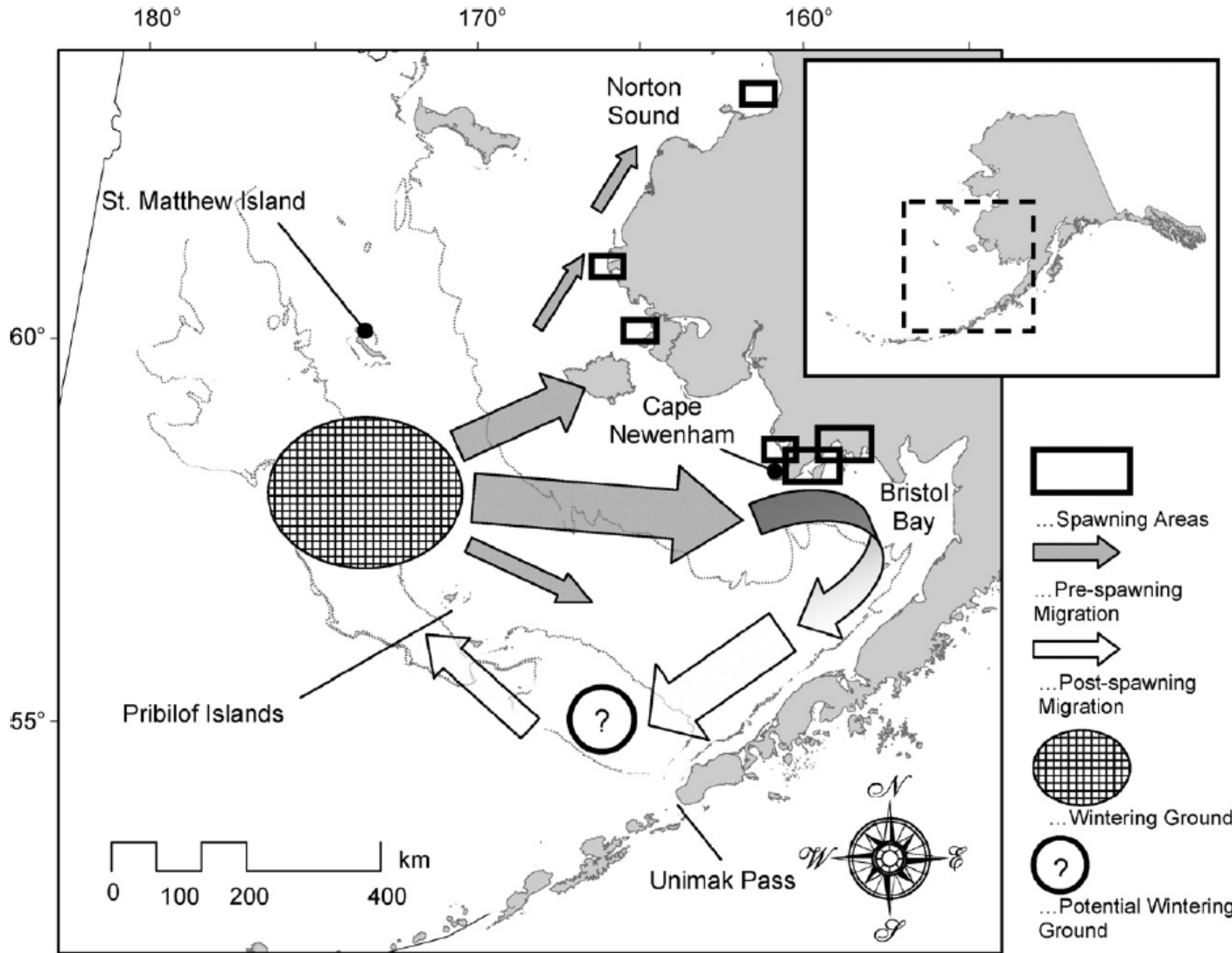
Figure 4 to Part 679. BSAI Herring Savings Areas  
a. Map.

Year	Herring PSC limit	PSC	Remaining	% taken
2003	1,526	962	564	63%
2004	1,876	1,208	668	64%
2005	2,012	692	1,320	34%
2006	1,770	486	1,284	27%
2007	1,787	418	1,369	23%
2008	1,726	215	1,511	12%
2009	1,697	88	1,609	5%
2010	1,974	356	1,618	18%
2011	2,273	397	1,876	17%
2012	2,094	2,376	(282)	113%
2013	2,648	988	1,660	37%
2014	2,179	186	1,993	9%
2015	2,742	1,531	1,211	56%
2016	2,630	1,485	1,145	56%
<b>average</b>	<b>2,067</b>	<b>813</b>	<b>1,253</b>	<b>39%</b>

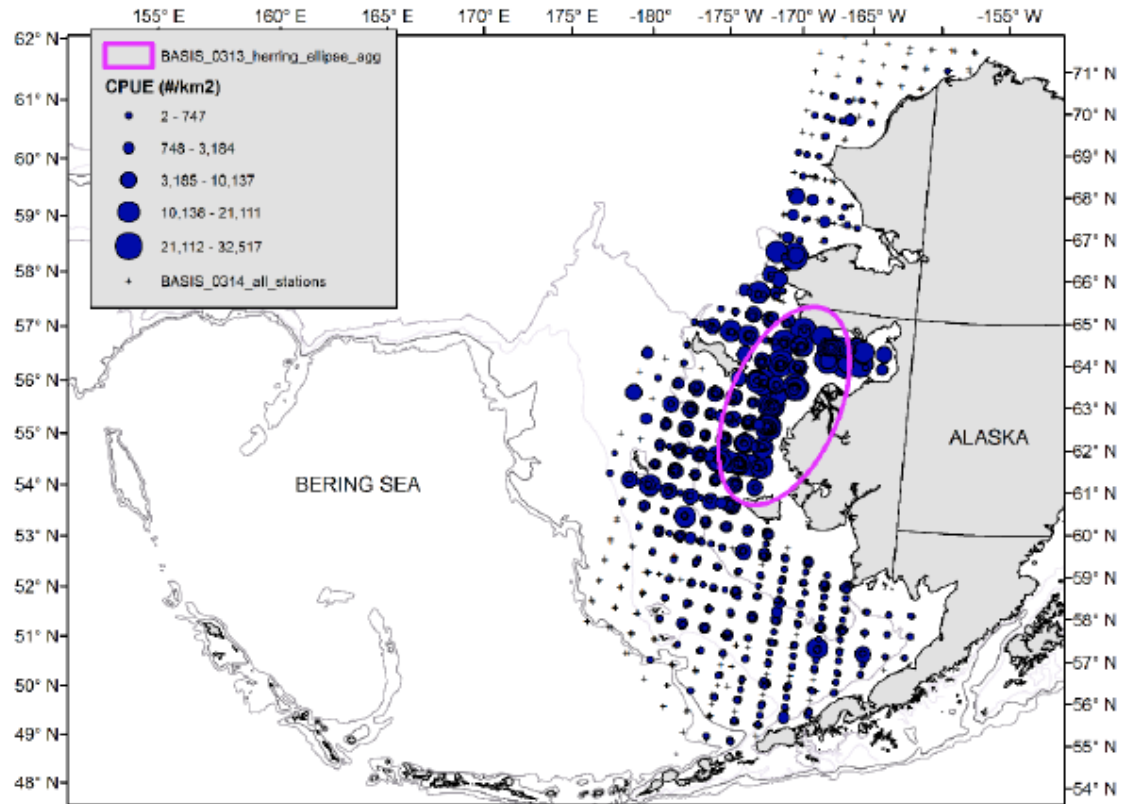


Herring Savings Areas and locations of herring fisheries

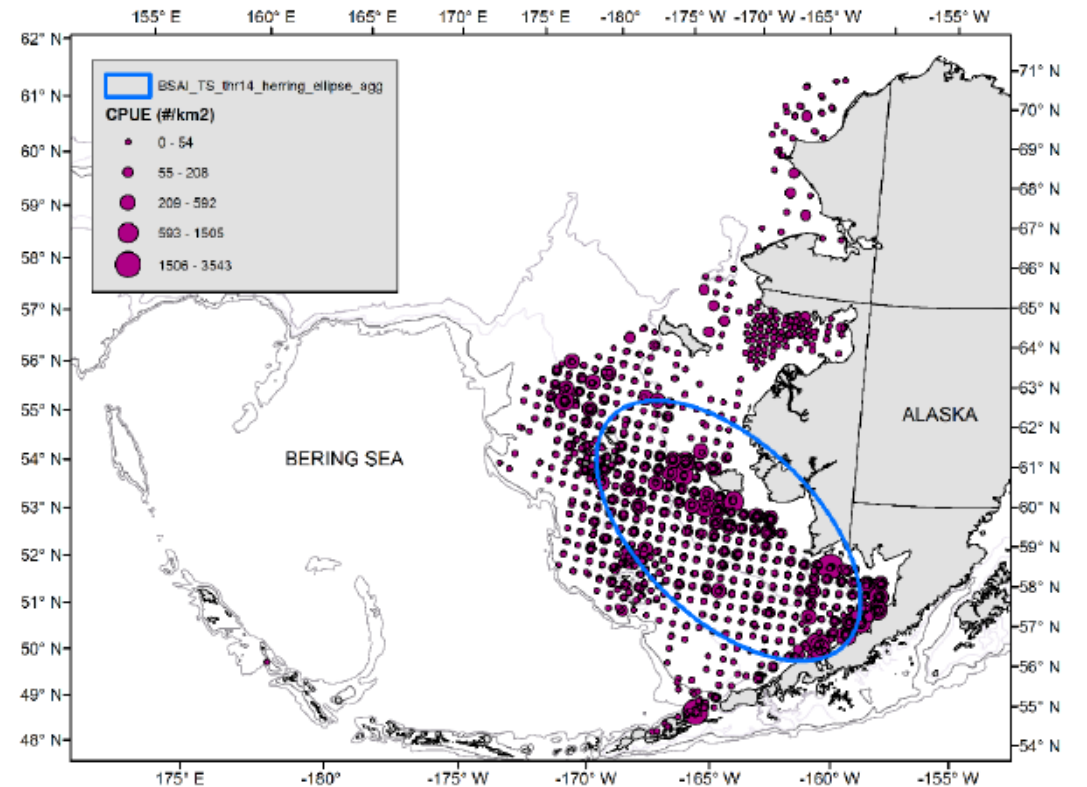
From Ormseth, 2015



Hypothesized migration routes and seasonal distributions of Pacific herring in EBS



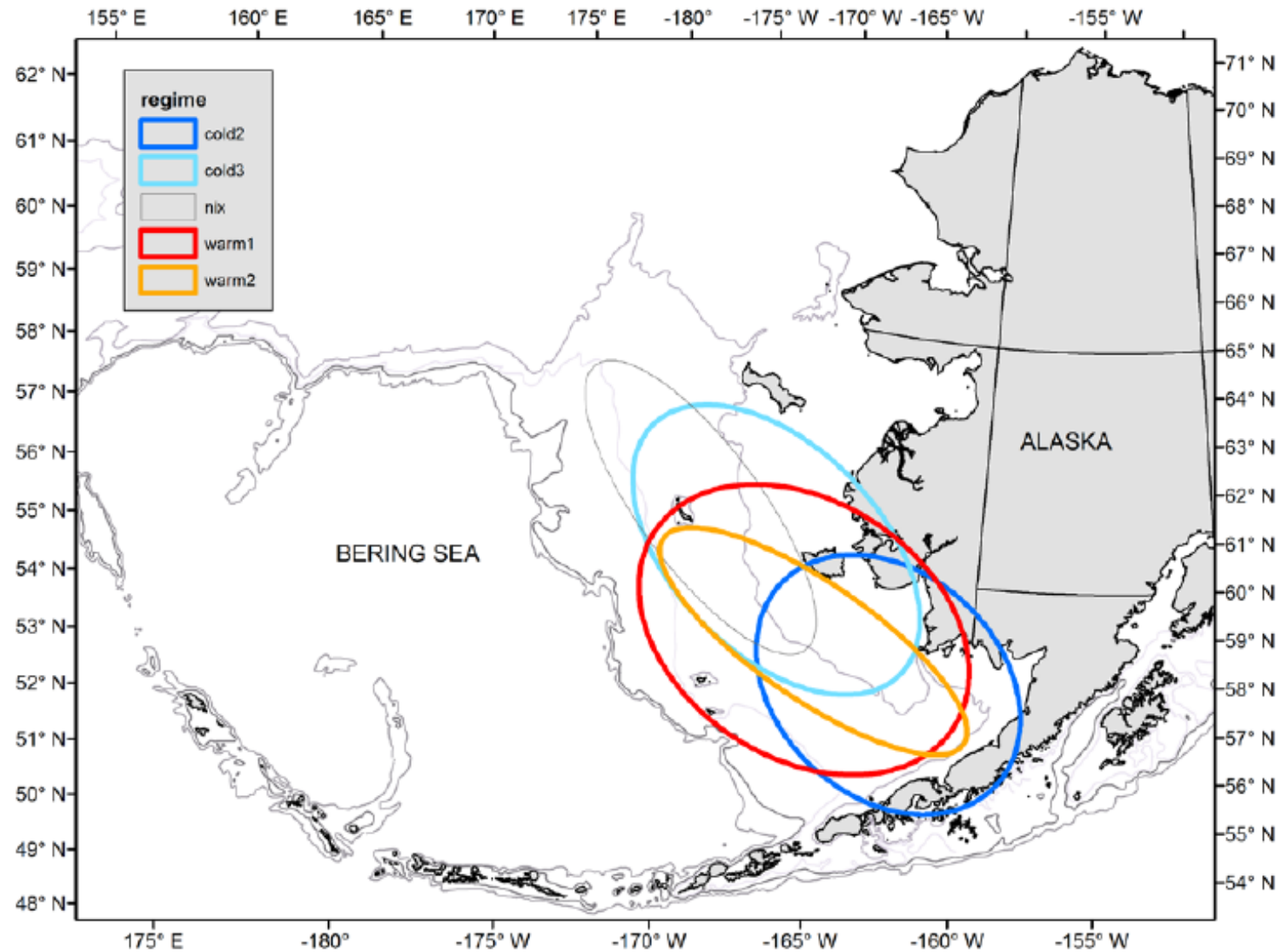
BSAI bottom trawl survey 1982-2014



BASIS survey 2003-2014

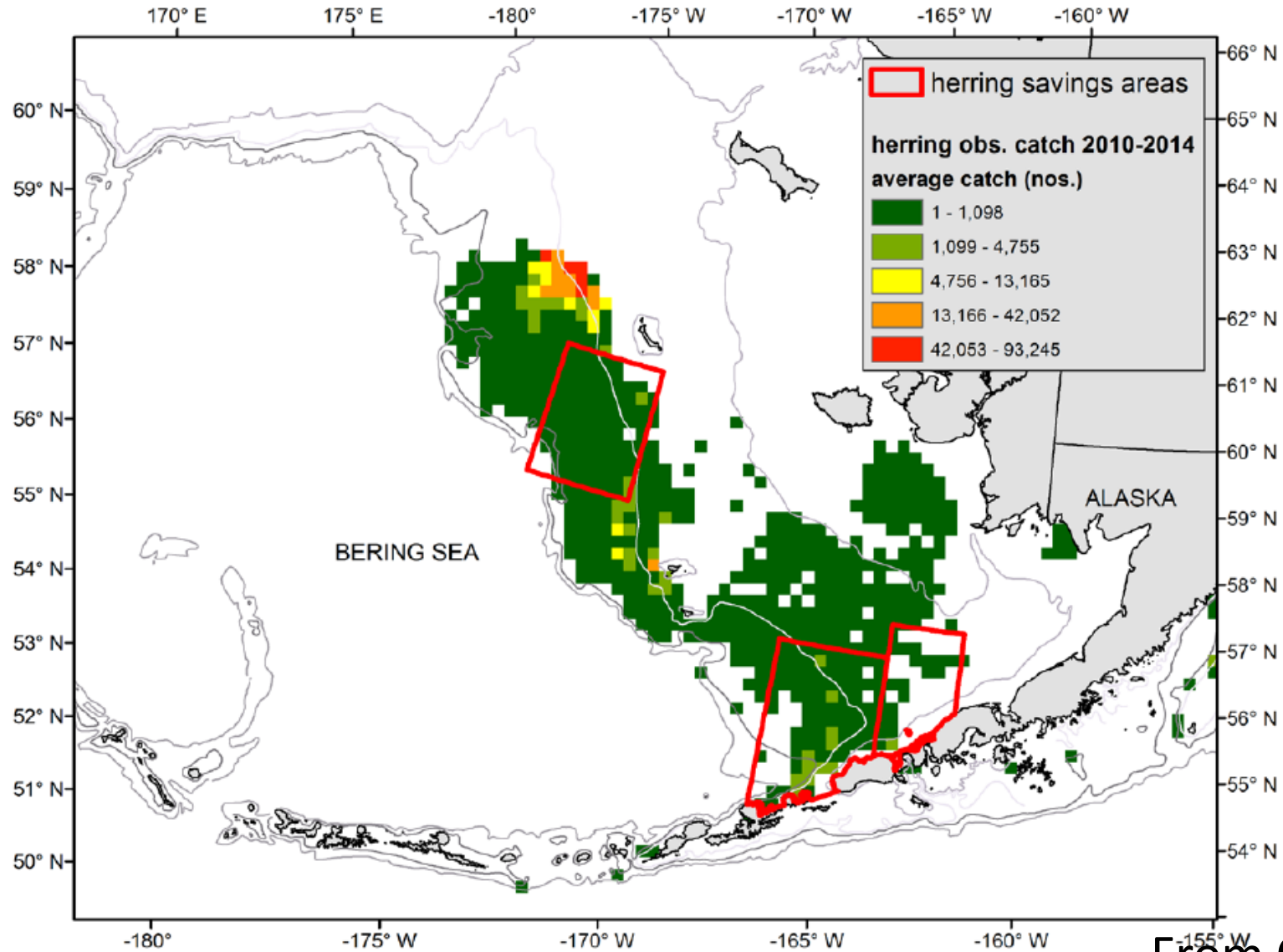
Mean CPUE (number/km<sup>2</sup>) of Pacific herring

From Ormseth, 2015



From Ormseth, 2015

Weighted Standard deviational ellipse by temperature for herring CPUE from BSAI bottom trawl survey



From Ormseth, 2015

Average observed catch (#/haul) in BSAI groundfish trawl fisheries 2010-2014