

D3 LOCAL KNOWLEDGE, TRADITIONAL KNOWLEDGE, AND SUBSISTENCE TASKFORCE UPDATE

KATE HAAPALA, COUNCIL STAFF
FEBRUARY 2021 COUNCIL MEETING



REMINDER OF LKTKS TASKFORCE GOALS

Approved Taskforce goals specified in the Council's February 2020 motion:

Goal 1: To create processes and protocols through which the Council can identify, analyze, and consistently incorporate TK and LK, and the social science of TK and LK, into Council decision-making processes to support the use of best available scientific information in Ecosystem-based Fishery Management (EBFM).

Goal 2: To create a protocol and develop recommendations through which the Council can define and incorporate subsistence information into analyses and decision-making.



REMINDER OF TASKFORCE OBJECTIVES

- **Objective 1:** Over the next 2-3 years the Taskforce will identify and define sources of LK and TK, and the social science of LK and TK, to support the use of best scientific information available in Council decision-making.
- **Objective 2:** The Taskforce will provide guidance and analytical protocols to the Council on how to evaluate and analyze LK and TK, and the social science of LK and TK.
- **Objective 3:** The Taskforce will provide guidance on how LK and TK, and the social science of LK and TK, could be incorporated into Council decision-making processes.
- **Objective 4:** Over the next 2-3 years the Taskforce will identify the relevant and appropriate sources of subsistence data and information to use in Council decision-making processes.
- **Objective 5:** The Taskforce will provide guidance on how subsistence data and information can be incorporated into Council decision-making processes.



2020 PROGRESS

- **Meetings:** The LKTKS Taskforce had three meetings in 2020
 - High participation from the public (e.g., 30 participants in November)
 - Next virtual meeting scheduled for March 16 and 17, 2021
- **Products completed:**
 - Authorized workplan
 - Glossary of terms (to be included in the Taskforce's workplan)
- **Other progress:**
 - Ongoing work on early draft of existing “onramps,” or points of entry, for accessing LKTKS in the Council's process
 - Ongoing work on protocol development including a tentative outline and twelve high-level guidelines
 - Catalogue of sources for identifying and soliciting LKTKS information



ONGOING CONVERSATIONS ON “ONRAMPS” FOR LKTKS INFORMATION

Preliminary onramp recommendations for LKTKS information in the Council’s process:

1. Engagement between the Council and tribes
2. Tribal Liaison position added to Council staff
3. Developing resources for including LKTK, the social science of LK and TK, and subsistence information into analyses like Regulatory Impact Reviews (RIRs) and Social Impact Assessments (SIAs)
4. Adding tribal, LK, TK, or subsistence knowledge holders to existing Plan Teams or committees



PROTOCOL DEVELOPMENT

- Protocol is the central element of Taskforce work
- Envision one accessible guidance document with four main sections:
 1. Overall purpose, contextual information, and definition of key terms
 2. Overarching guidelines for including LKTKS
 - a. Taskforce came to a consensus on 12 initial guidelines at its November 2020 meeting
 3. Protocol on how to:
 - a. identify
 - b. analyze
 - c. incorporate

LKTK, the social science of LKTK, and subsistence

4. References to relevant tools, other work, and other information.



DRAFT PROTOCOL GUIDELINES

Guideline 1

Understand key concepts and definitions related to LK, TK, and Subsistence

Guideline 2

Recognize and respect the role of multiple knowledge systems

Guideline 3

Recognize how to identify sources of LK, TK, the social science of LK and TK, and subsistence

Guideline 4

Use appropriate methods to identify or collect LK and TK data

Guideline 5

Analyzing sources of LKTKS information

Guideline 6

Engage in early and frequent communication with relevant entities

Guideline 7

Ensure the presence of appropriate community representatives for a given stage of the process

Guideline 8

Understand and respect community and tribal protocols for sharing data and decision-making

Guideline 9

Ensure a transparent and accountable process that provides clarity on the research, decision-making, or potential impacts of action

Guideline 10

Ensure appropriate data management and maintain confidentiality, as agreed with participating entities

Guideline 11

Ensure appropriate capacity

Guideline 12

Interface with new or existing institutional onramps for LK, TK, the social science of LK and TK, and subsistence



OTHER OVERARCHING WORK - 1

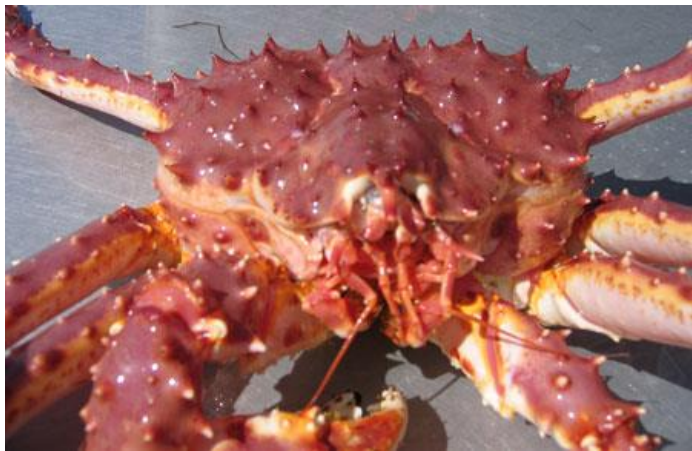
How can the Taskforce develop processes for identifying and defining sources of LK, TK, the social science of LK and TK, and subsistence information (Goal 1 and 2, Objective 1 and 4)?

- Identified over 250 preliminary sources of published or publicly available papers and reports related to LK, TK, or subsistence
- Developing a tool that functions like a search engine for sources
- This tool will:
 - Help the Taskforce to gauge the usefulness of certain protocol components, and
 - Provide a useful resource to staff, agency partners, the Council, and the public



OTHER OVERARCHING WORK - 2

Norton Sound red king crab case study



- Continuing to discuss the possibility of using a case study to pilot protocols
- Norton Sound Red King Crab is responsive to SSC request but the Taskforce cannot conduct original research on this issue (e.g., ethnographic work in region to collect TK)
- **Providing concrete guidance** based on specific fishery and region
- **Identifying LKTKS** data and data sources
- **Linking protocol** to on the ground example
- **Illustrating** high level, best practices - how would you do this all the way through the process
- Taskforce agreed work on **protocols should be more advanced** before turning to case study 'test'



PROJECT TIMELINE

		2020			2021			2022			2023		
		Jan	Apr	Nov	Jan	Apr	Nov	Jan	Apr	Nov	Jan	Apr	Nov
Workplan	Set goals and objectives	█											
	Update document with definitions		█	█									
Glossary of terms	Identify set of key terms used by LKTKS Taskforce	█	█										
	Consensus on definitions and product completion			█									
Identify Sources of LKTKS	Develop search engine for sources		█	█	█								
	Identify narrative sources of non published sources				█	█							
LKTKS Onramps	Initial review of potential institutional interfaces for LKTKS information		█										
	Review conceptual model for tribal engagement			█									
	Review and reach consensus on other institutional interfaces				█								
	Review, evaluate, and update with case study							█	█				
Case Study	Case study identification, Norton Sound Red King Crab		█										
	Case study development			█	█								
	Conducting case study				█	█	█						
	Results, consensus and write up									█			
LKTK Protocol Development	Identify guidelines and initial outline			█									
	Review Draft				█								
	Review Draft					█	█						
	Consensus and finalize							█	█				
Subsistence Protocol Development	Identify guidelines and					█							
	Review Draft						█						
	Review Draft							█					
	Consensus and finalize								█	█			
Final Report to Council	Draft										█		
	Review											█	
	Presentation												█

QUESTIONS?

