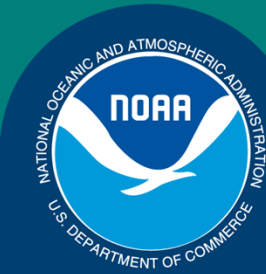


*Science, Service, Stewardship*



# Economic Performance in the North Pacific Groundfish Fisheries

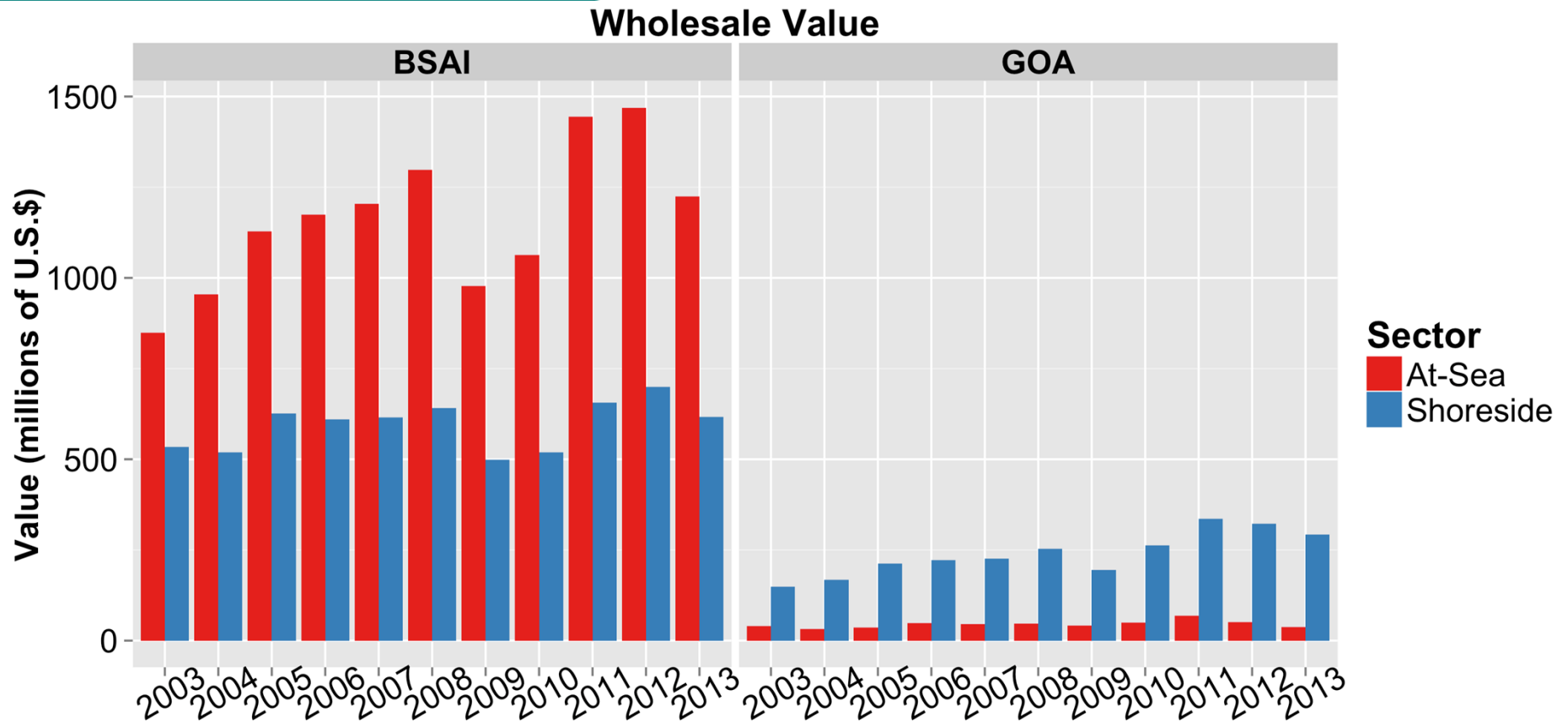
Presented by

**Ben Fissel**

**November 17, 2014**

**NOAA  
FISHERIES  
SERVICE**

# First-Wholesale Market Value

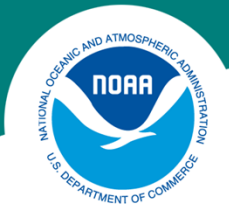


	<b>BSAI AtSea</b>	<b>BSAI Shr</b>	<b>GOA AtSea</b>	<b>GOA Shr</b>	<b>All AK</b>
2006 - 08	\$ 1,225.9	\$ 622.0	\$ 47.3	\$ 233.8	\$ 2,128.9
2012	\$ 1,469.3	\$ 699.4	\$ 51.5	\$ 322.4	\$ 2,542.7
2013	\$ 1,224.7	\$ 616.2	\$ 36.9	\$ 292.1	\$ 2,169.9

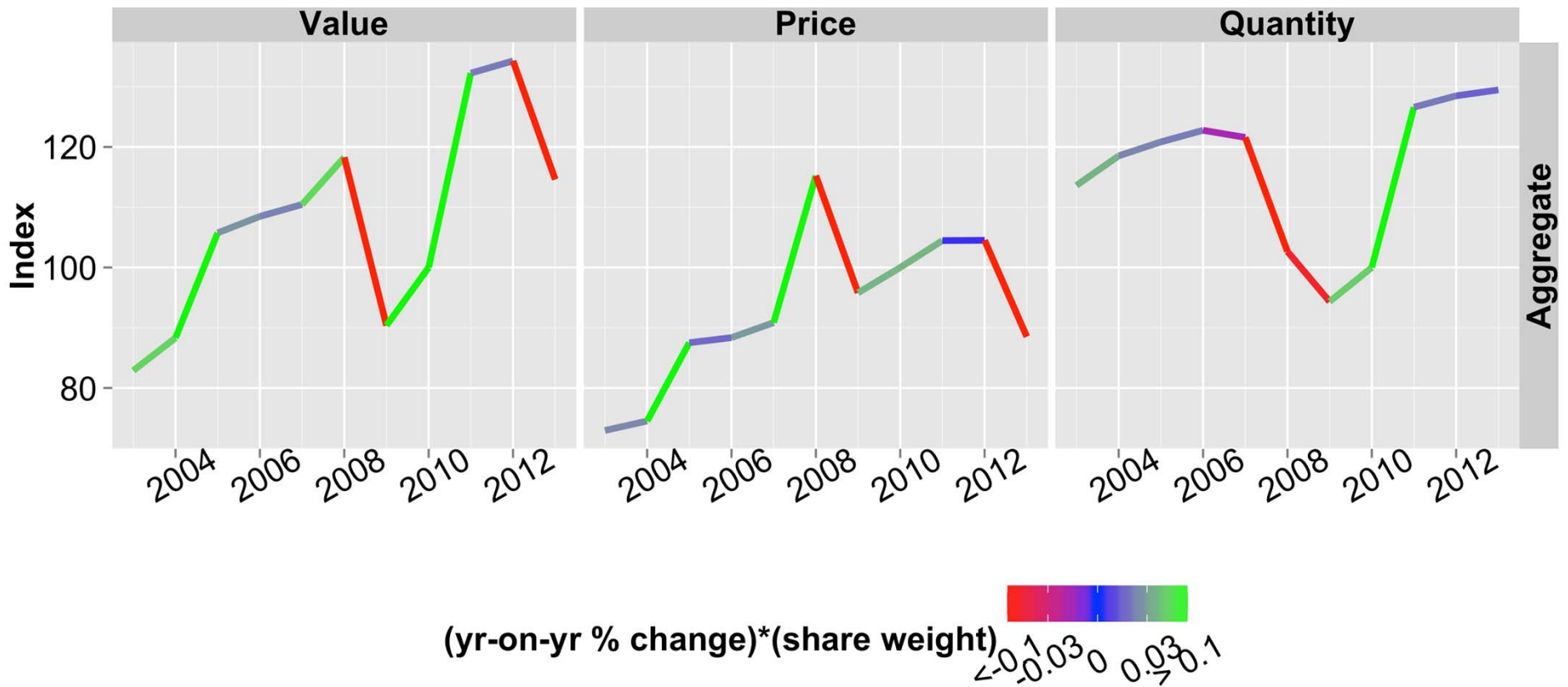


## Disaggregating the Changes in Value

- Economic indices to decompose the changes in market value: price vs. quantity. ( $value = price * quantity$ )
- Indices are broken down by region (BSAI vs. GOA) and sector (at-sea vs. shoreside)
- Subindices show the source of aggregate change within a region and sector
  - Coloring indicates its aggregate influence in the sector (Blue=Neutral; Red=Negative; Green=Positive)
- Identify changes in mix of species harvested, products sold, and gear types used

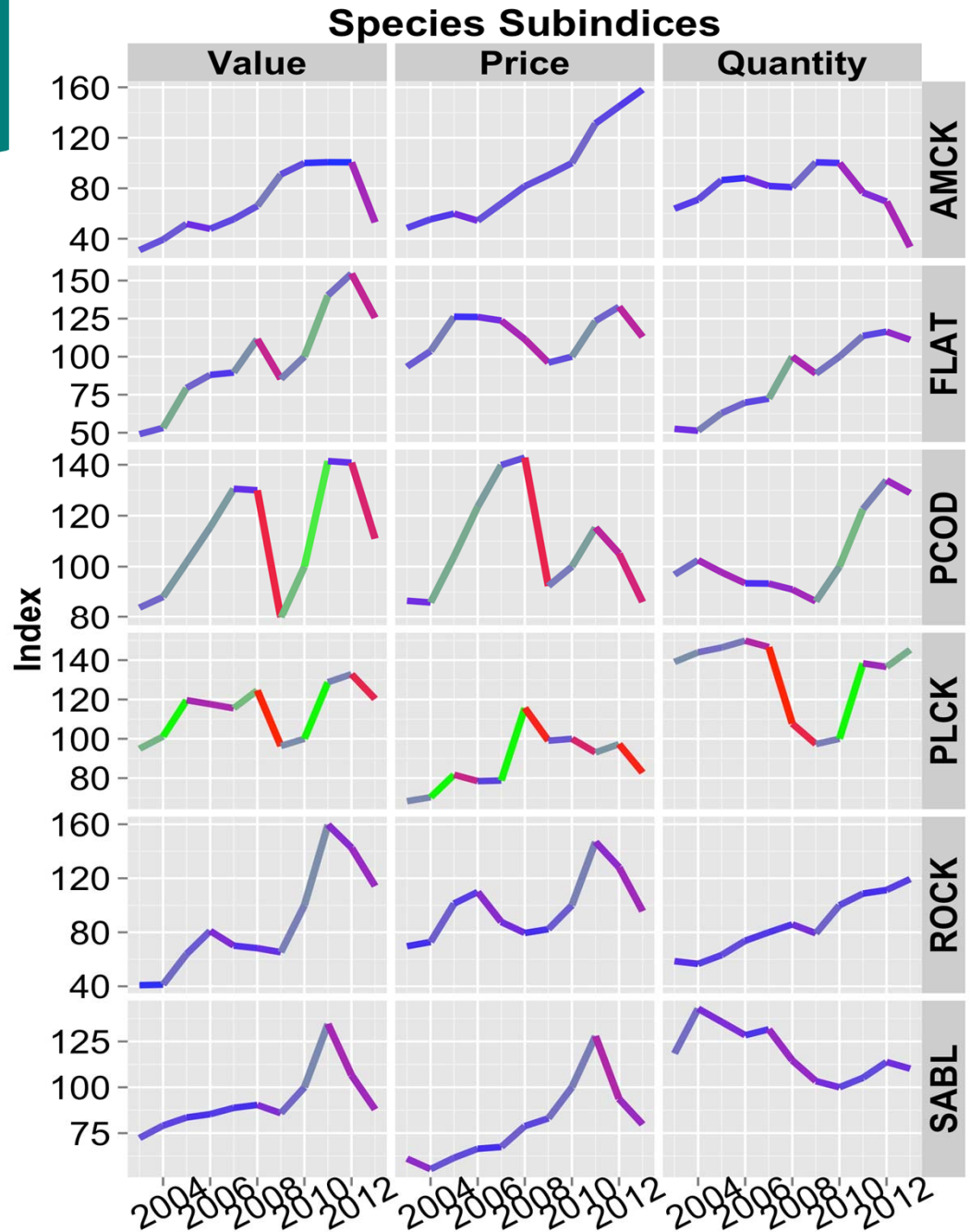


# Alaska Wholesale Market: Aggregate Economic Indices



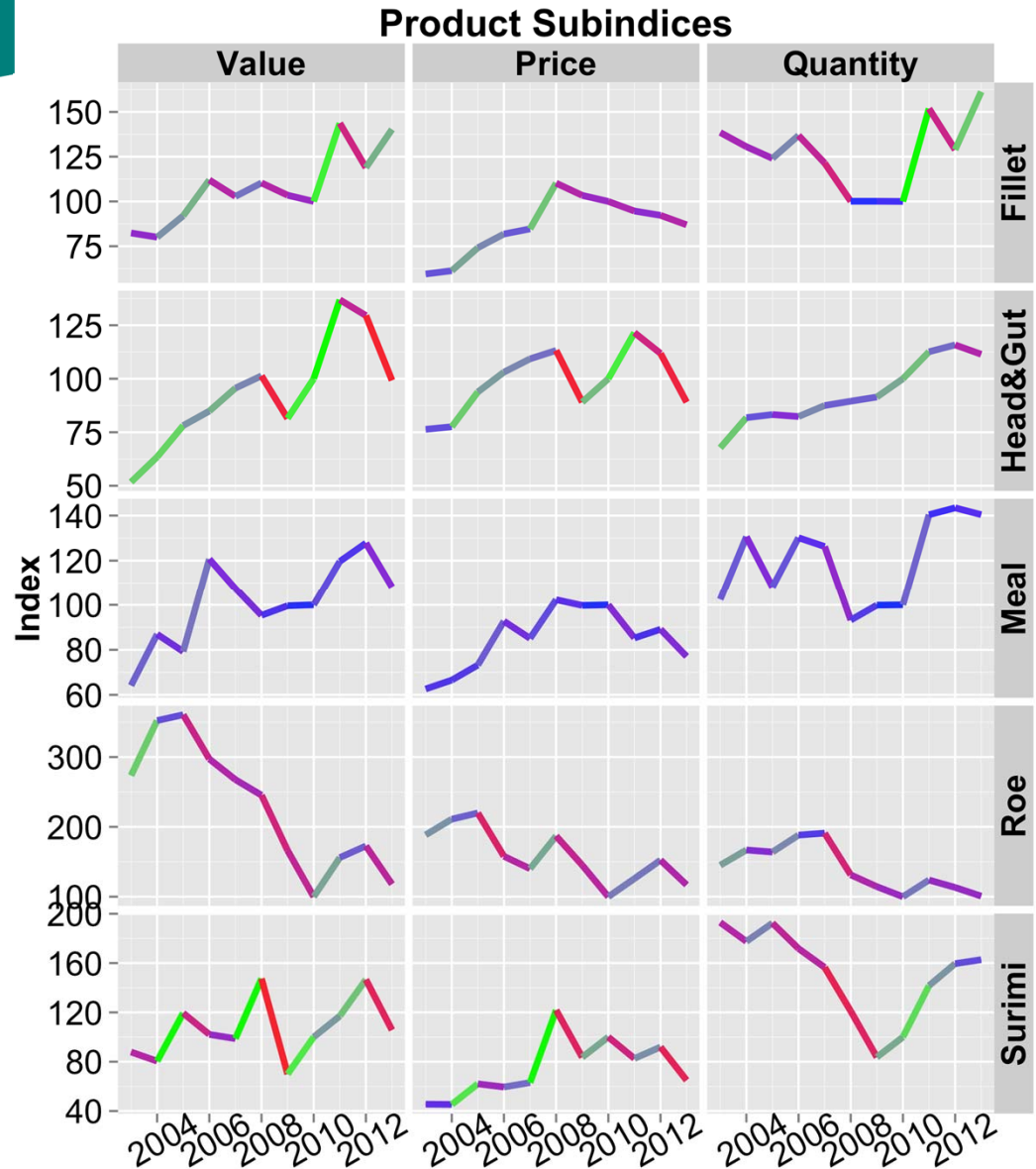
## Alaska Wholesale Market: By Species

- Value dropped for all species.
- Generally, prices drove change in value.
- Price drop in cod was particularly substantial.
- Prices fell less for pollock but the aggregate impact is large.

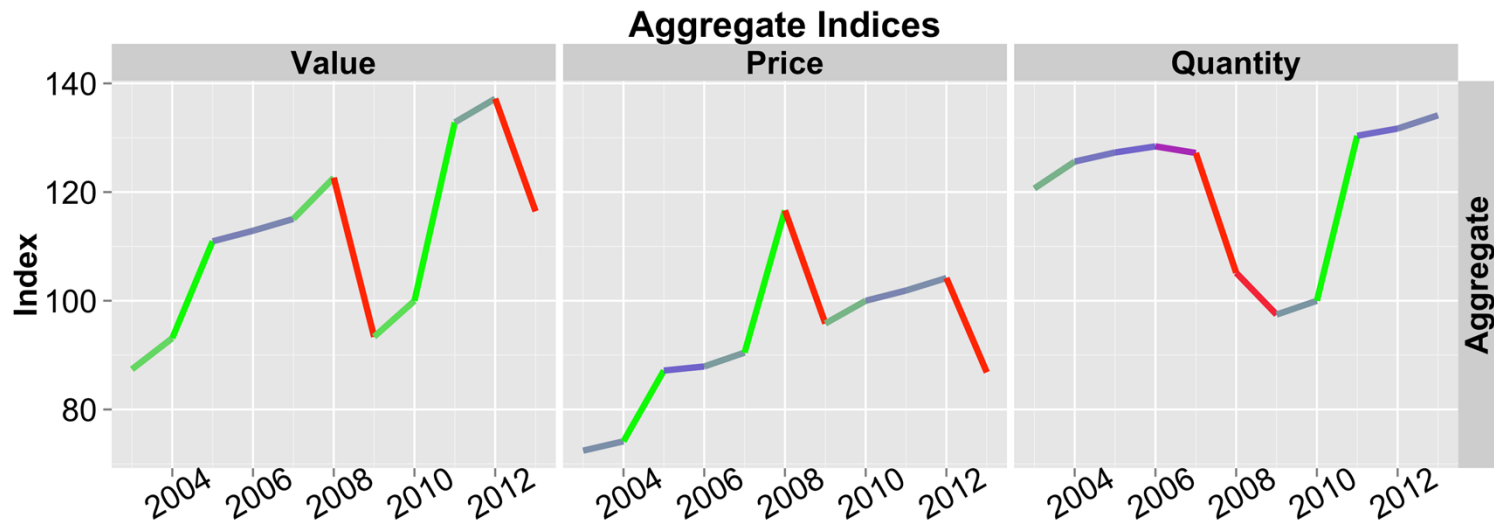


## Alaska Wholesale Market: By Product

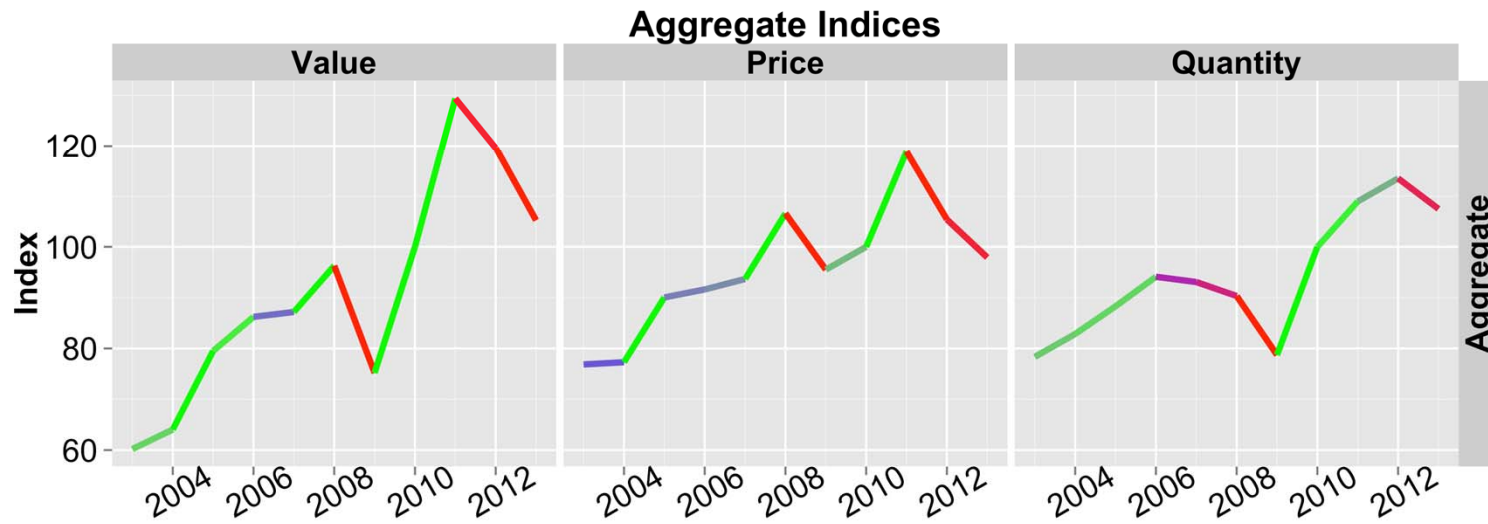
- Large drop in H&G and surimi value & prices.
- Drop in fillet prices less significant with increase in production and value.
- Shifts between H&G (surimi) and fillets differs slightly across P. cod and pollock and sectors.



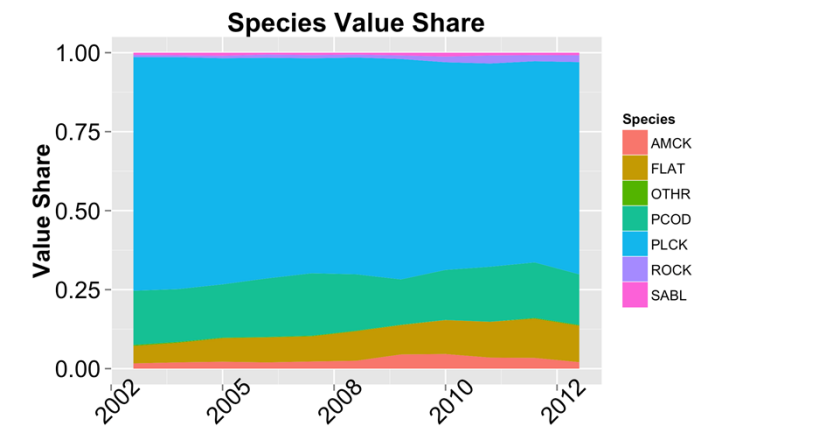
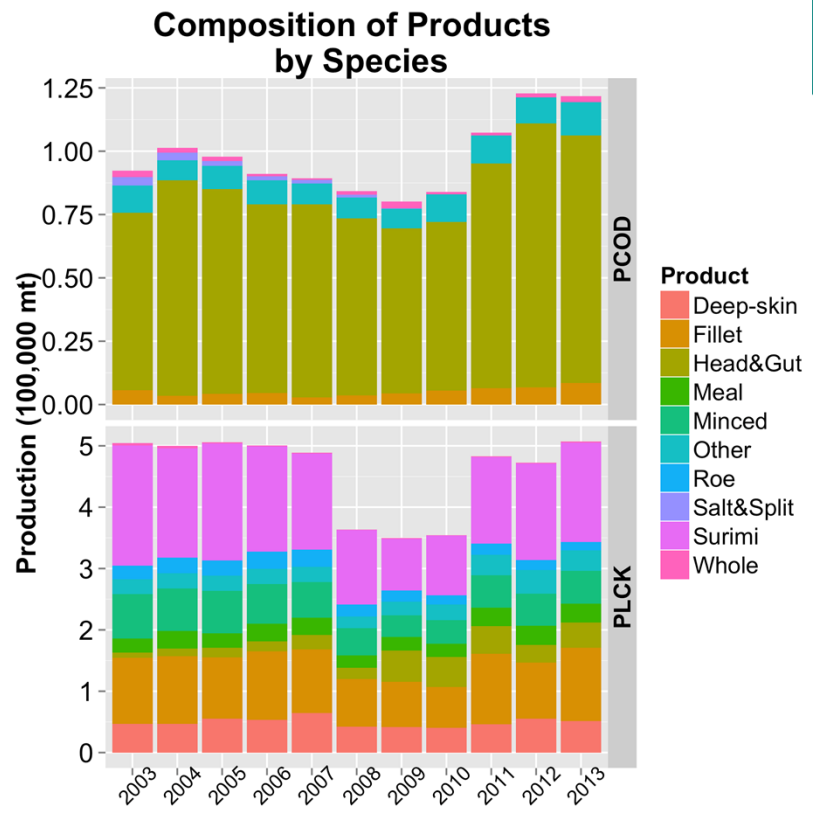
# Aggregate Economic Indices: BSAI Wholesale Market



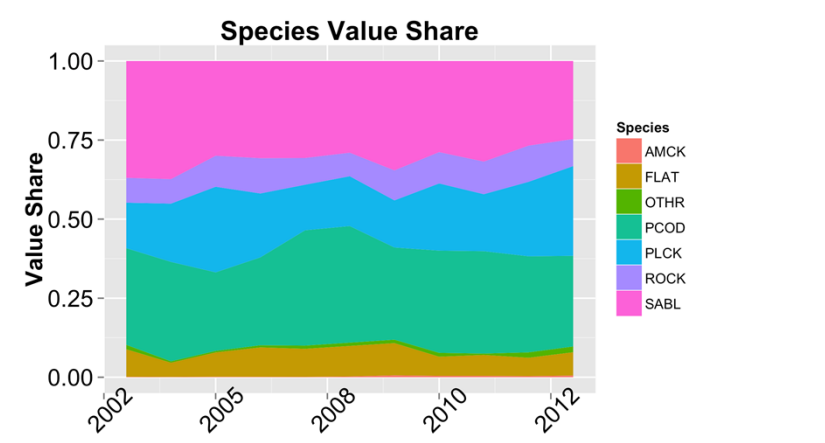
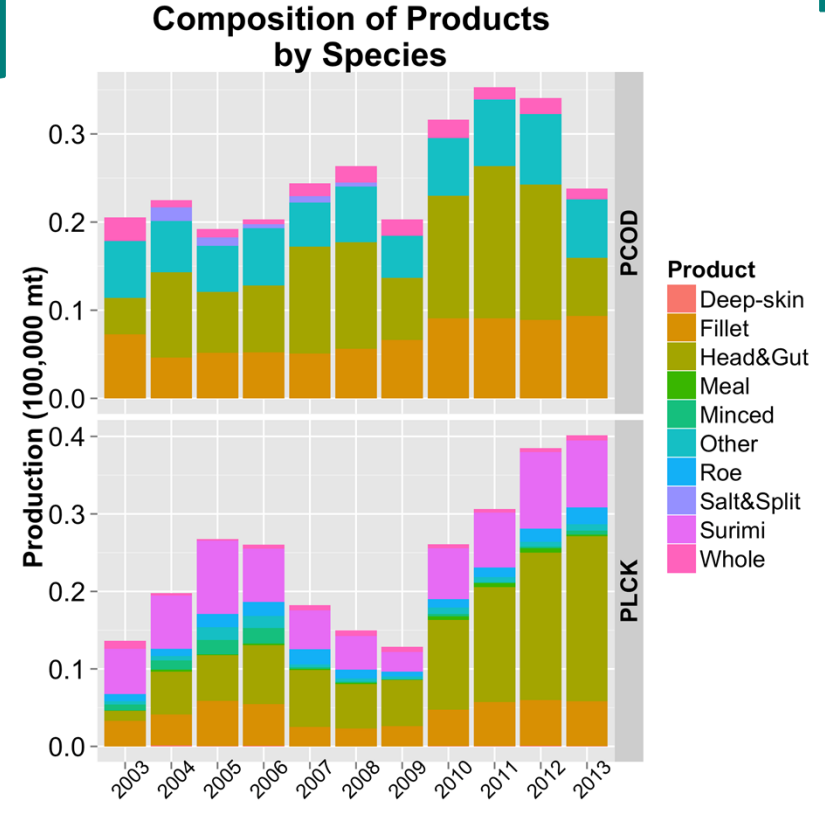
## GOA Wholesale Market



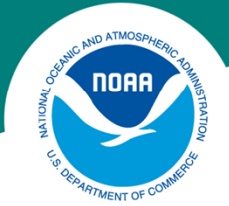
# BSAI Wholesale



# GOA Wholesale

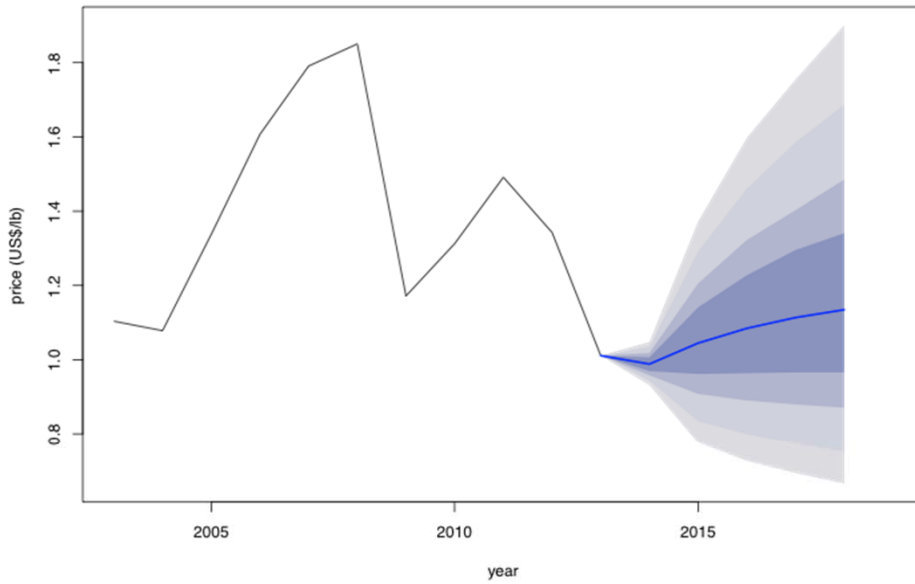




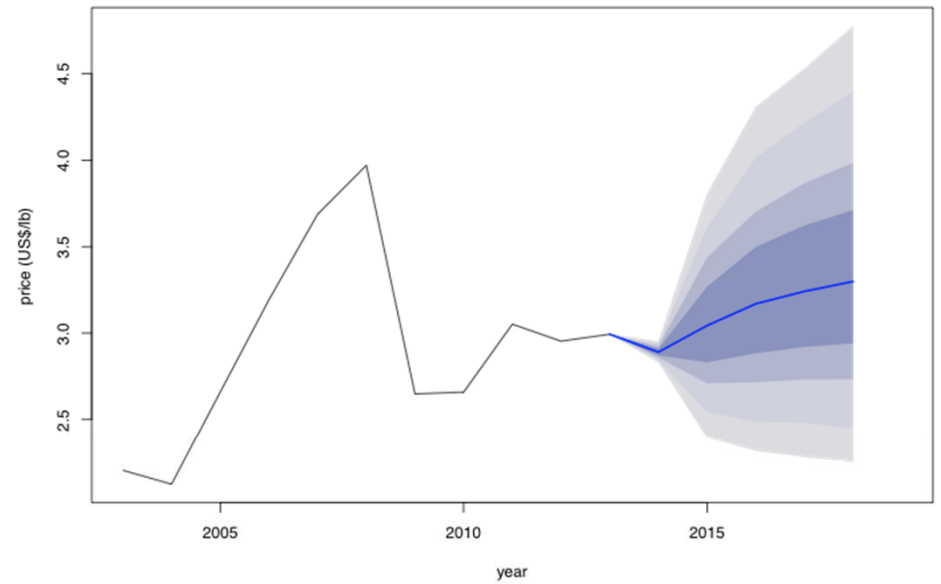


## Pacific Cod Fillet and H&G Prices

Pacific Cod Head And Gut Price Projection



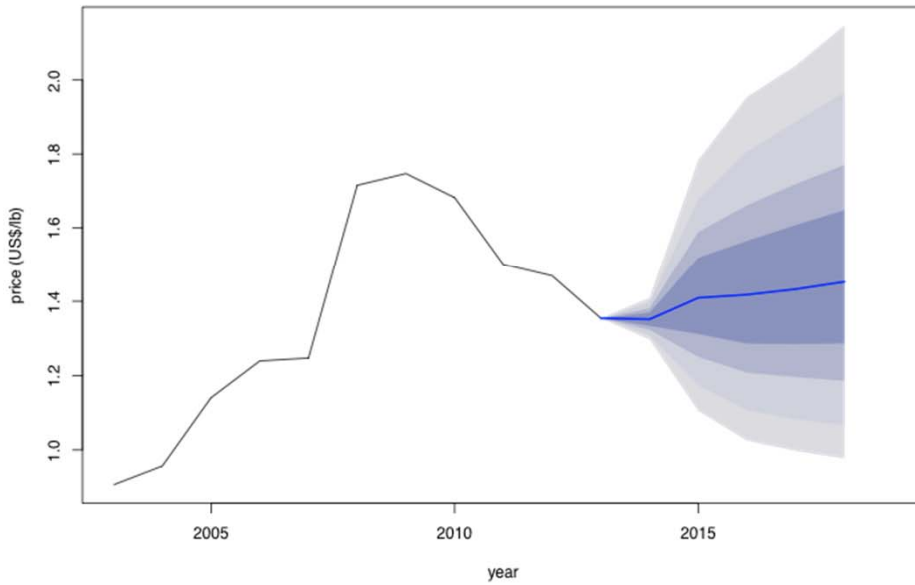
Pacific Cod Fillet Price Projection



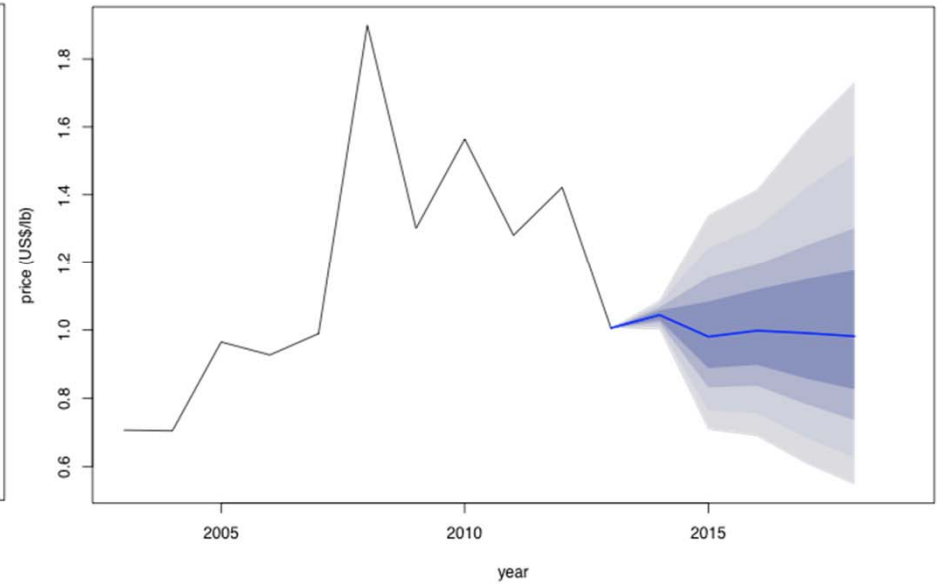


# Pollock Fillet and Surimi Prices

Pollock Fillet Price Projection

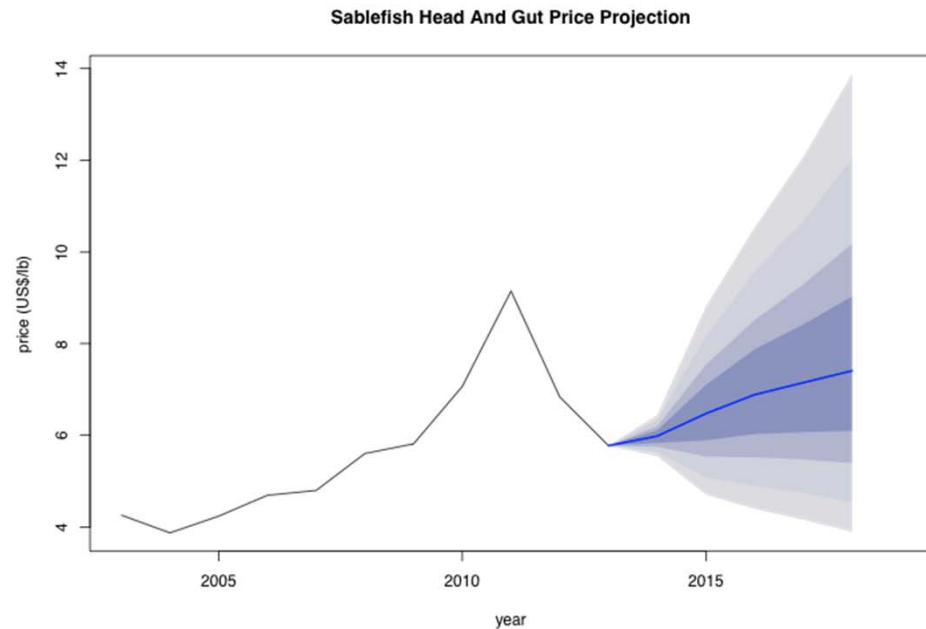
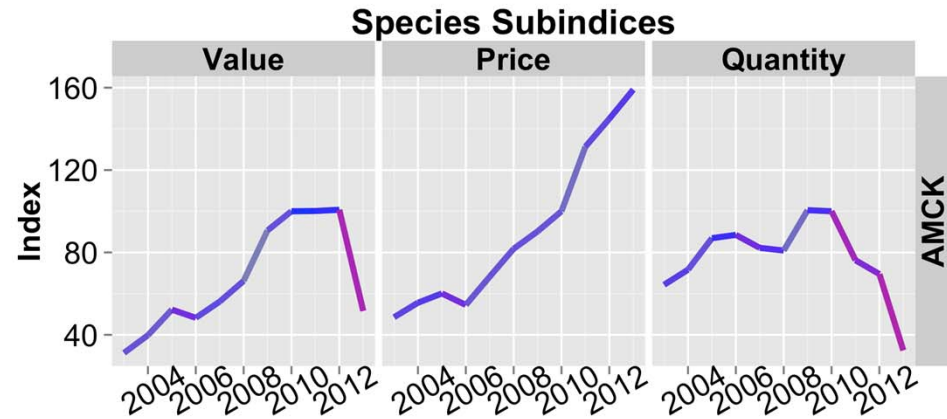


Pollock Surimi Price Projection

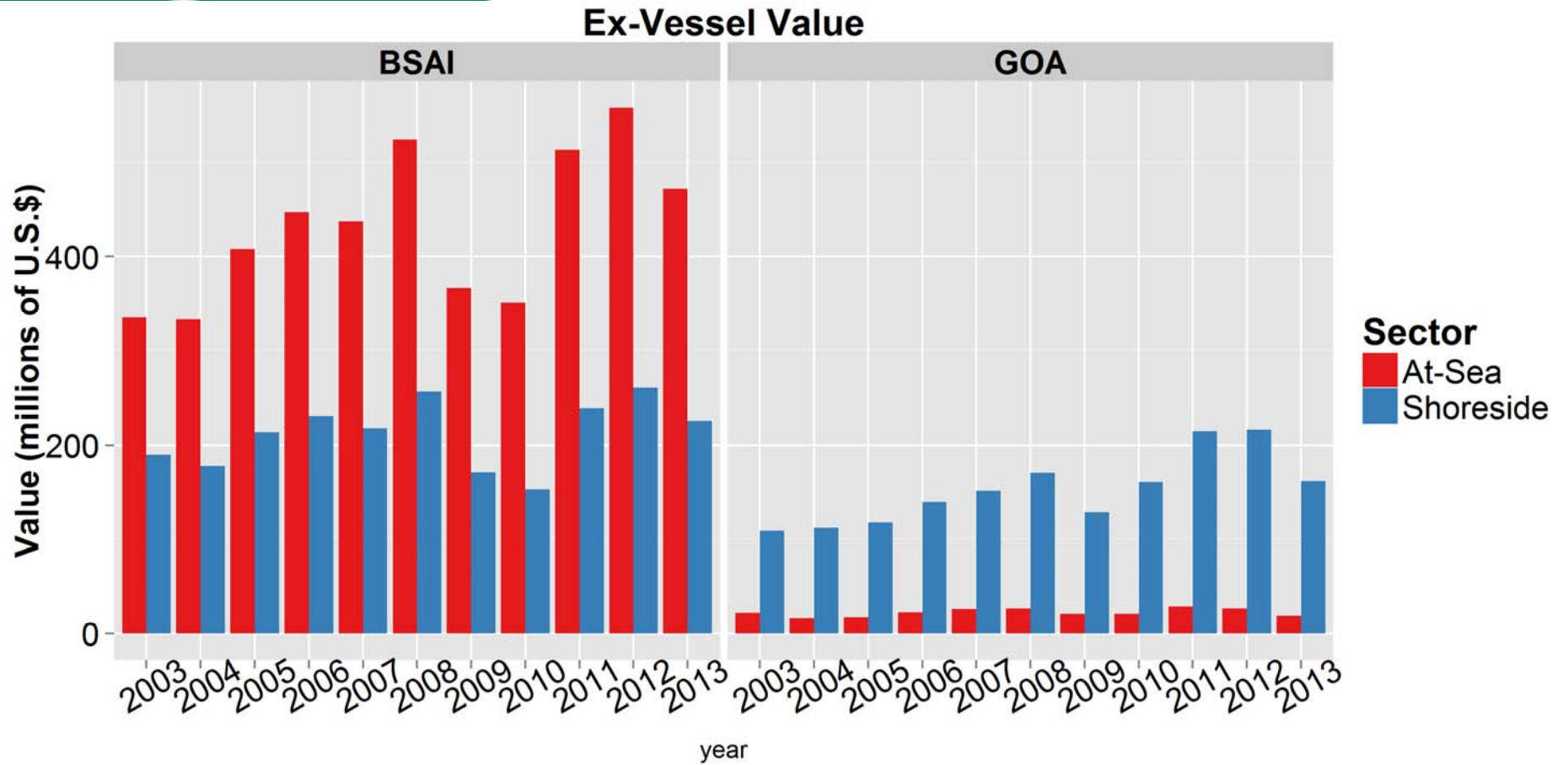




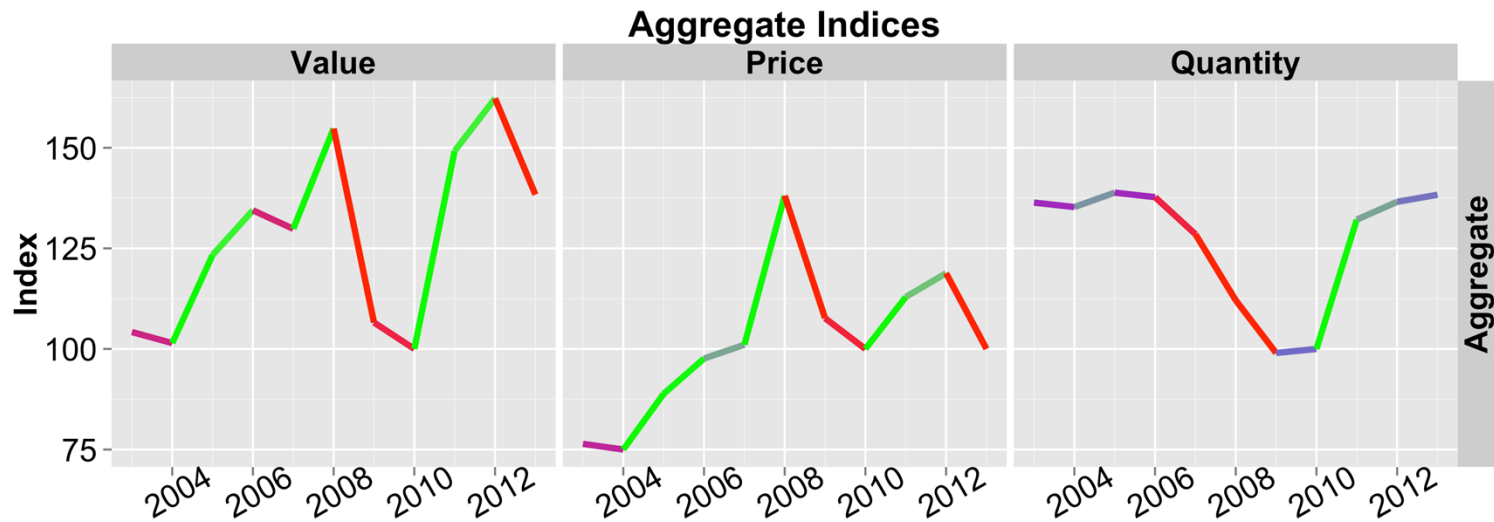
- Atka Mackerel drop in wholesale production (result of TAC reduction). Mainly affects BSAI.
- Sablefish price dropped. High for many years. Projected to stabilize in 2014. Mainly affects GOA.



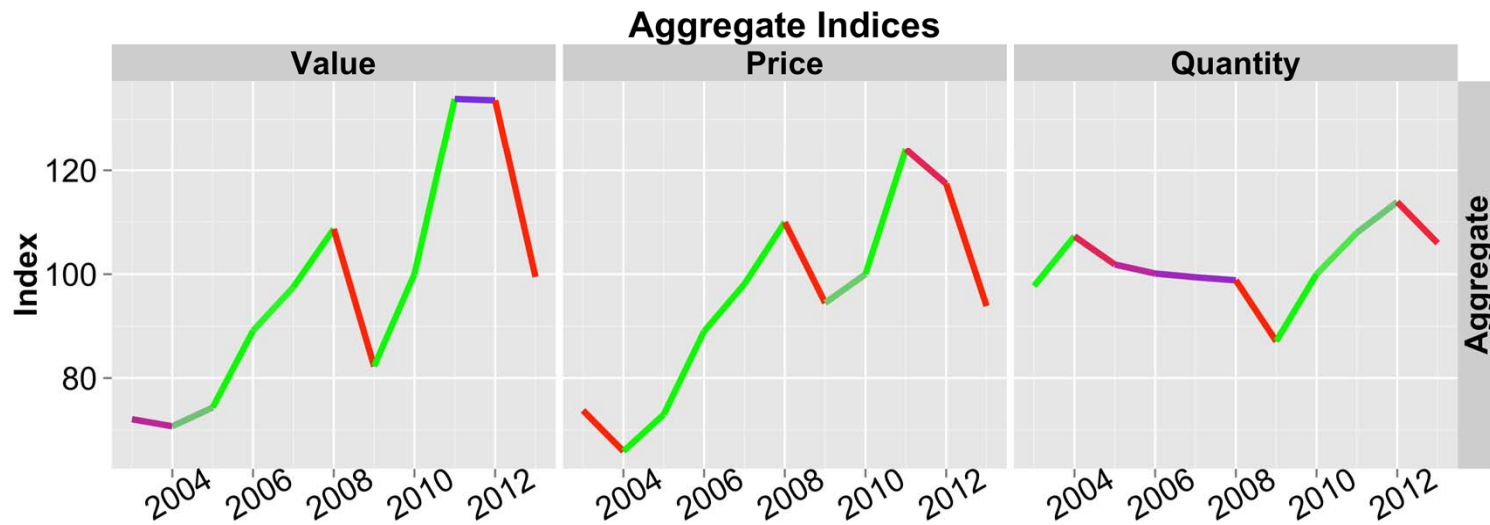
# Ex-vessel Market Value



# Aggregate Economic Indices: BSAI Ex-vessel Market



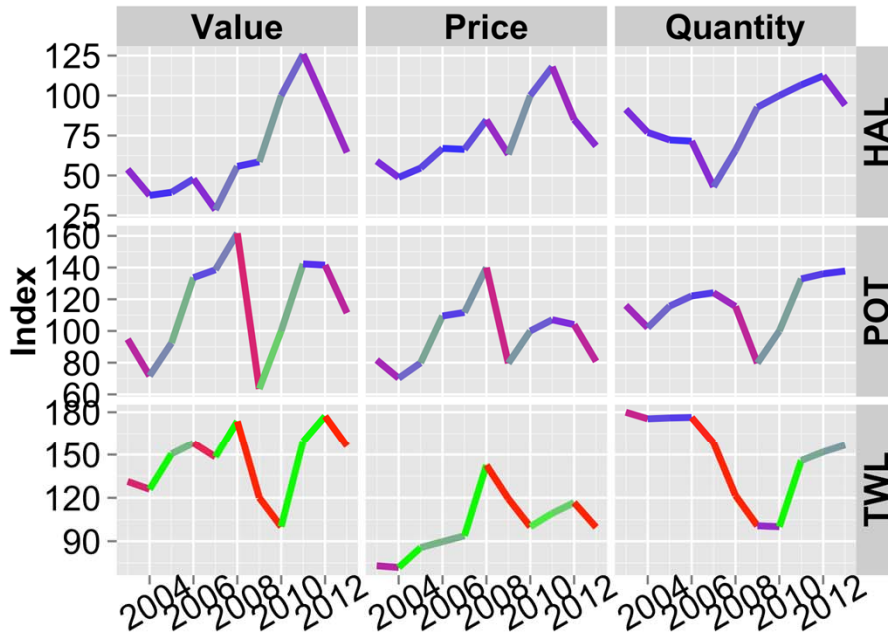
## GOA Ex-vessel Market



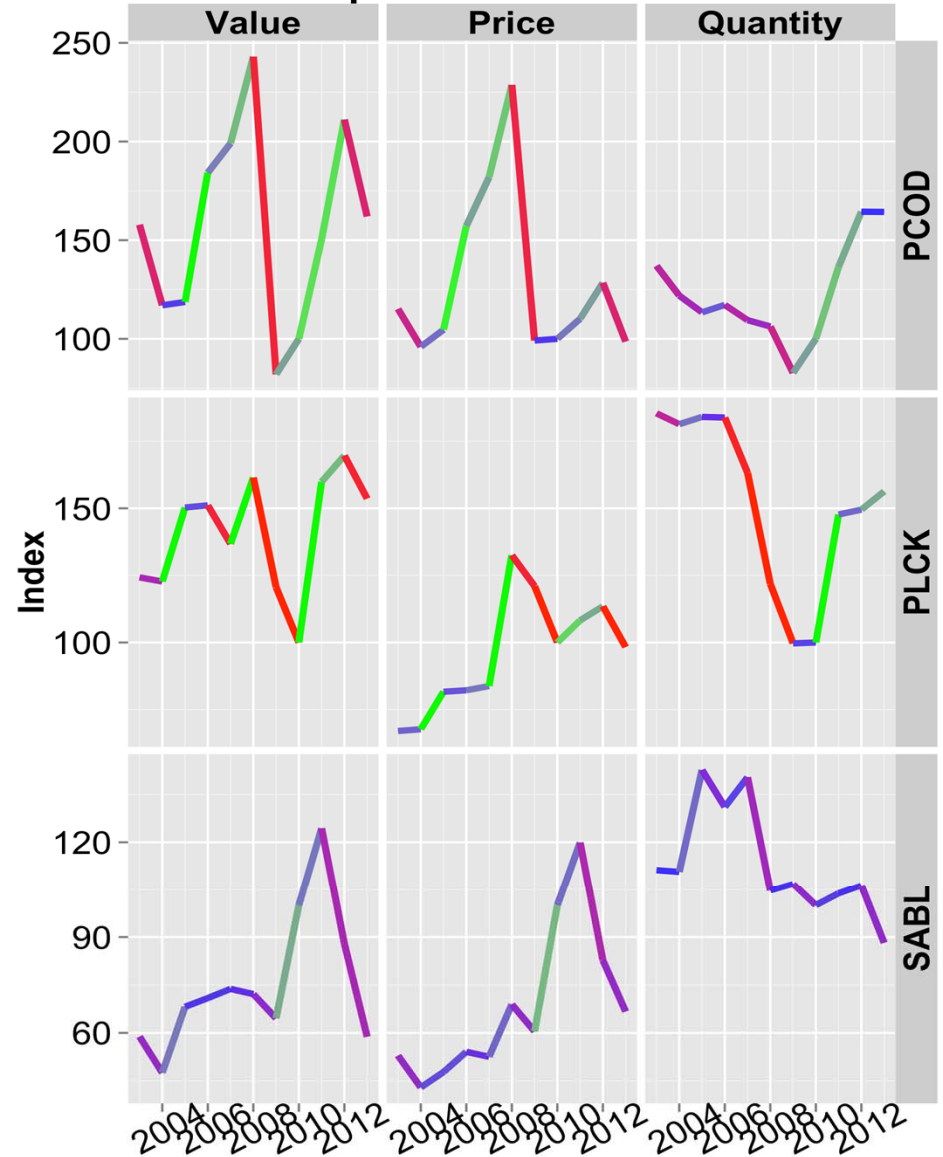


# BSAI Shoreside Ex-vessel

**Gear Subindices**

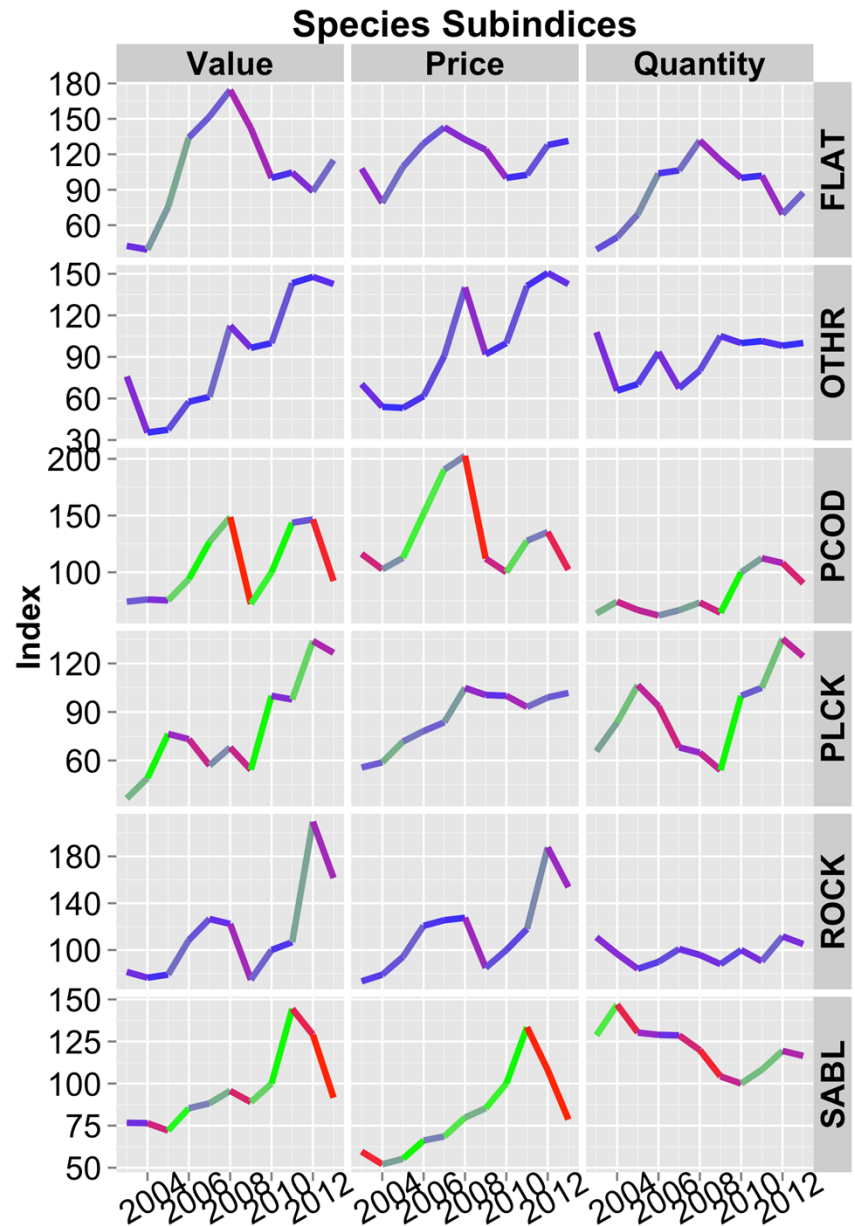
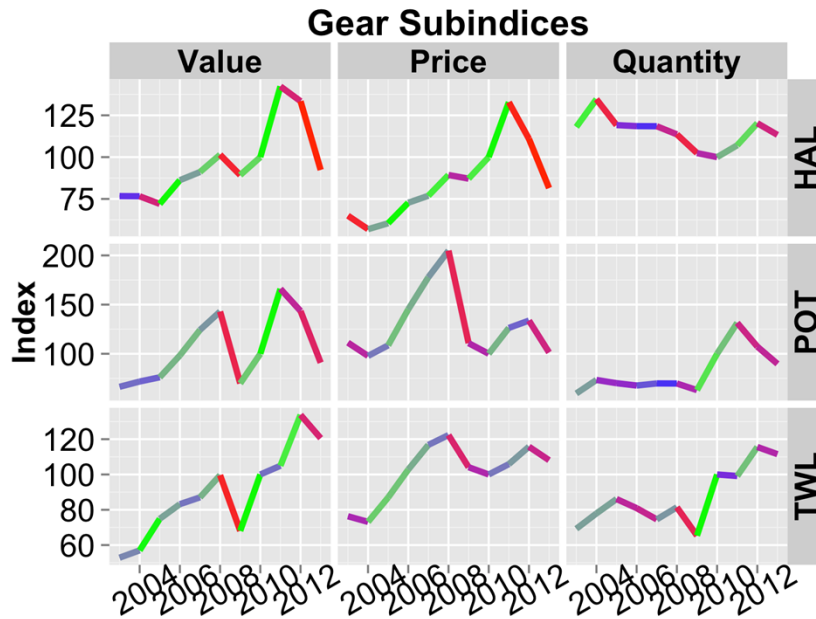


**Species Subindices**

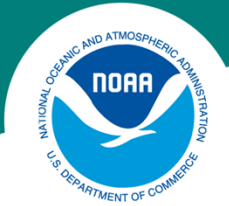




# GOA Shoreside Ex-vessel



**NOAA  
FISHERIES  
SERVICE**



**Thanks!!**