

Final 2022 Sport Halibut Harvest Estimates for Areas 2C and 3A

Alaska Department of Fish and Game

1. Area 2C

Table 1.1. Area 2C sport halibut harvest estimates by sector and subarea, 2022.

Subarea	Charter (logbook)			Unguided (SWHS)		
	No. Fish ^a	Avg. Wt. ^b	Yield (Mlb)	No. Fish ^a	Avg. Wt. ^b	Yield (Mlb)
Ketchikan	10,177	9.86	0.100	9,007	13.79	0.124
POW Island	22,608	7.75	0.175	12,087	7.92	0.096
PBG/WRG	2,009	14.60	0.029	14,890	16.07	0.239
Sitka	29,693	11.13	0.330	6,897	14.23	0.098
Jun/Haines/Skag	8,928	6.97	0.062	9,543	12.14	0.116
Glacier Bay	9,721	11.52	0.112	14,886	34.75	0.517
Area 2C	83,136	9.74	0.810	67,310	17.69	1.191

^a-Number of fish harvested in charter fishery is from logbook data, estimate for unguided fishery is from the ADF&G Statewide Harvest Survey.

^b-Average net weight (headed and gutted).

Table 1.2. Approximate 95% confidence intervals for yield estimates (million pounds).

User	Estimate	StdErr	Lower 95%	Upper 95%
Charter	0.810	0.020	0.770	0.849
Unguided	1.191	0.082	1.029	1.352
Overall	2.000	0.085	1.834	2.166

Table 1.3. Comparison of preliminary and final estimates of sport halibut removals in Area 2C in 2022 (million pounds).

Sector	Removal	Preliminary (Oct 2022)	Final (Oct 2023)	Diff (M lb) (Prelim – Final)
Charter	Yield	0.807	0.810	-0.003
	All Rel mort	0.037	0.039	-0.002
		0.843	0.848	-0.005
Unguided	Yield	1.125	1.191	-0.065
	All Rel mort	0.015	0.023	-0.008
	Total	1.141	1.214	-0.073

Table 1.4. Performance of Area 2C charter management measures recommended annually by the North Pacific Fishery Management Council under the Catch Sharing Plan, 2014-2022.

Year	Measures	Allocation (Mlb)	Removals ^a (Mlb)	Under(-)/Over(+) Allocation	
				Mlb	Percent
2014	One fish, U44"-O76", CSP provisions.	0.761	0.827	+0.066	+8.7%
2015	One fish, ≤ 42" or ≥ 80", CSP provisions.	0.851	0.814	-0.037	-4.3%
2016	One fish, ≤ 43" or ≥ 80", CSP provisions.	0.906	0.839	-0.067	-7.4%
2017	One fish, ≤ 44" or ≥ 80", CSP provisions.	0.915	0.941	+0.026	+2.8%
2018	One fish, ≤ 38" or ≥ 80", CSP provisions.	0.810	0.716	-0.094	-11.6%
2019	One fish, ≤ 38" or ≥ 80", CSP provisions.	0.820	0.697	-0.123	-15.0%
2020	One fish, ≤ 40" or ≥ 80" thru 6/14, then ≤ 45" or ≥ 80", CSP provisions.	0.780	0.483	-0.297	-38.0%
2021	One fish, ≤ 50" or ≥ 72", CSP provisions.	0.810	1.163	0.353	43.6%
2022	One fish, ≤ 40" or ≥ 80", CSP provisions	0.820	0.848	0.028	3.4%

^a-Removals includes harvest and release mortality.

Table 1.5. Area 2C sport halibut yield (excluding release mortality) by sector since 2000. Charter harvest (no. fish) from charter logbook data beginning in 2014 and estimated using the ADF&G Statewide Harvest Survey before 2014.

Year	Charter			Unguided			Total Sport Harvest		
	Harvest (no. fish)	Avg. Wt. (lb net)	Yield (Mlb)	Harvest (no. fish)	Avg. Wt. (lb net)	Yield (Mlb)	Harvest (no. fish)	Avg. Wt. (lb net)	Yield (Mlb)
2000	57,208	19.75	1.130	54,432	20.59	1.121	111,640	20.16	2.251
2001	66,435	18.10	1.202	43,519	16.56	0.721	109,954	17.49	1.923
2002	64,614	19.74	1.275	40,199	20.25	0.814	104,813	19.94	2.090
2003	73,784	19.13	1.412	45,697	18.52	0.846	119,481	18.90	2.258
2004	84,327	20.75	1.750	62,989	18.84	1.187	147,316	19.93	2.937
2005	102,206	19.10	1.952	60,364	14.01	0.845	162,570	17.21	2.798
2006	90,471	19.94	1.804	50,520	14.30	0.723	140,991	17.92	2.526
2007	109,835	17.46	1.918	68,498	16.51	1.131	178,333	17.10	3.049
2008	102,965	19.42	1.999	66,296	19.08	1.265	169,261	19.28	3.264
2009	53,602	23.31	1.249	65,549	17.29	1.133	119,151	20.00	2.383
2010	41,202	26.36	1.086	52,896	16.72	0.885	94,098	20.94	1.971
2011	36,545	9.40	0.344	42,202	16.24	0.685	78,747	13.07	1.029
2012	42,436	14.27	0.605	54,696	17.87	0.977	97,132	16.30	1.583
2013	52,675	14.47	0.762	78,078	17.43	1.361	130,753	16.24	2.123
2014	65,036	12.04	0.783	69,060	16.95	1.170	134,096	14.57	1.954
2015	65,656	11.69	0.768	73,816	17.97	1.327	139,472	15.02	2.094
2016	66,147	11.93	0.789	66,714	18.68	1.246	132,861	15.32	2.035
2017	70,647	12.76	0.901	60,817	20.03	1.218	131,464	16.12	2.120
2018	69,992	9.37	0.656	57,688	21.09	1.216	127,680	14.67	1.873
2019	70,600	9.38	0.662	60,760	19.22	1.168	131,360	13.93	1.830
2020	36,100	12.77	0.461	47,371	18.44	0.873	83,471	15.99	1.334
2021	77,803	14.50	1.128	65,364	17.80	1.163	143,167	16.01	2.292
2022	83,136	9.74	0.810	67,310	17.69	1.191	150,446	13.29	2.000

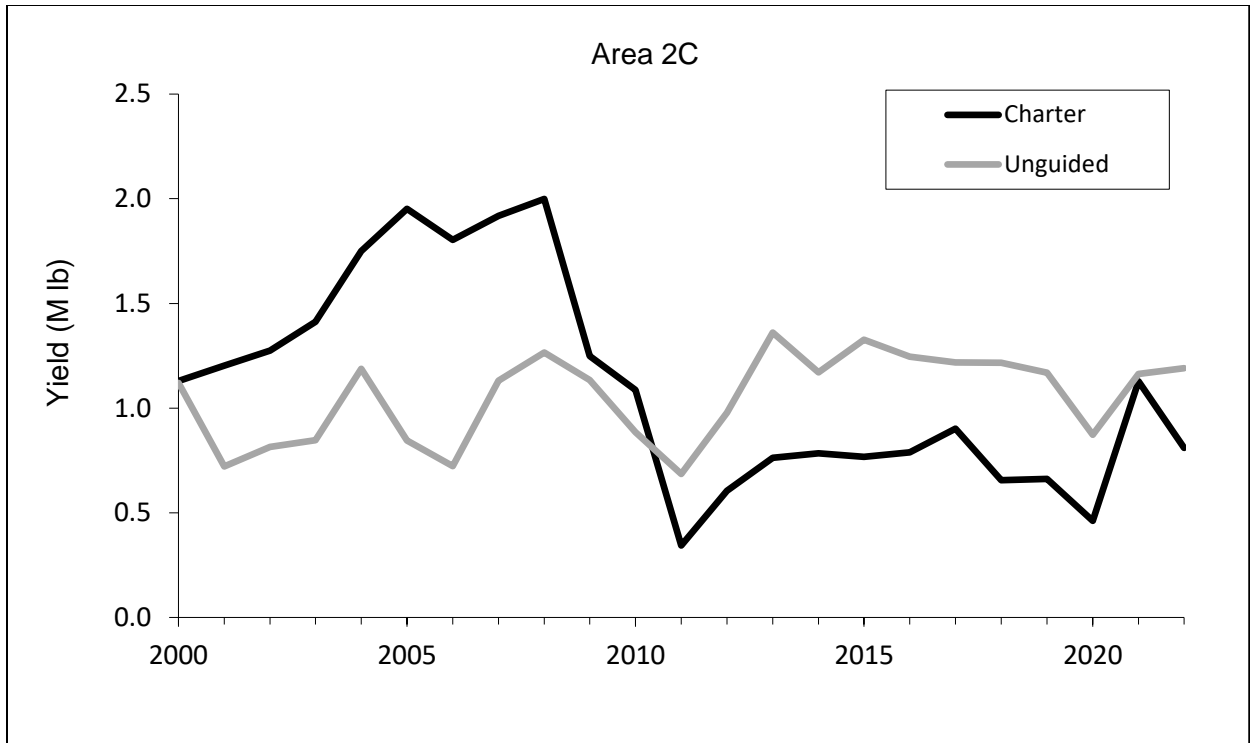


Figure 1.1. Charter and Unguided halibut yield (M lb) in Area 2C since 2000.

2. Area 3A

Table 2.1. Area 3A sport halibut harvest estimates by sector and subarea, 2022.

Subarea	Charter			Unguided		
	No. Fish ^a	Avg. Wt. ^b	Yield (Mlb)	No. Fish ^a	Avg. Wt. ^b	Yield (Mlb)
Central Cook Inlet	28,534	10.42	0.297	19,524	11.59	0.226
Lower Cook Inlet	75,015	8.28	0.621	30,470	9.48	0.289
Kodiak	13,977	10.88	0.152	4,971	11.04	0.055
North Gulf Coast	36,909	9.61	0.355	6,828	12.99	0.089
Eastern PWS	6,437	16.45	0.106	4,398	15.97	0.070
Western PWS	4,304	11.87	0.051	7,471	16.04	0.120
Yakutat	3,668	31.17	0.114	2,249	20.09	0.045
Glacier Bay	748	40.94	0.031	--	--	--
Area 3A	169,592	10.18	1.727	75,911	11.78	0.894

^a-Number of fish harvested in charter fishery is from logbook data, estimate for unguided fishery is from the ADF&G Statewide Harvest Survey.

^b-Average net weight (headed and gutted).

Table 2.2 Approximate 95% confidence intervals for yield estimates (million pounds).

User	Estimate	StdErr	Lower 95%	Upper 95%
Charter	1.727	0.055	1.619	1.835
Unguided	0.894	0.056	0.785	1.003
Overall	2.621	0.078	2.467	2.774

Table 2.3 Comparison of preliminary and final estimates of sport halibut removals in Area 3A in 2022 (million pounds).

Sector	Removal	Preliminary (Oct 2022)	Final (Oct. 2023)	Difference (Prelim - Final)
Charter	Yield	1.760	1.727	0.033
	All Rel mort	0.013	0.014	-0.001
	Total	1.773	1.741	0.032
Unguided	Yield	1.182	0.894	0.288
	All Rel mort	0.018	0.013	0.005
	Total	1.201	0.907	0.293

Table 2.4. Performance of Area 3A charter management measures recommended annually by the North Pacific Fishery Management Council under the Catch Sharing Plan, 2014-2022.

Year	Measures	Allocation (Mlb)	Removals ^a (Mlb)	Under(-)/Over(+) Allocation	
				Mlb	Percent
2014	Two fish, one ≤ 29", one trip per vessel per day, CSP provisions.	1.782	2.066	+0.284	+15.9%
2015	Two fish, one ≤ 29", one trip per vessel per day, Thursdays closed 6/15-8/31, 5-fish annual limit, CSP provisions.	1.890	2.094	+0.204	+10.8%
2016	Two fish, one ≤ 28", one trip per vessel and CHP per day, Wednesdays closed, 4-fish annual limit, CSP provisions.	1.814	2.021	+0.207	+11.4%
2017	Two fish, one ≤ 28", one trip per vessel and CHP per day, Wed closed all year, three Tuesdays closed, annual limit=4, CSP provisions.	1.890	2.089	+0.199	+10.5%
2018	Two fish, one ≤ 28", one trip per vessel and CHP per day, Wed closed all year, six Tuesdays closed, annual limit=4, CSP provisions.	1.790	1.886	+0.096	+5.4%
2019	Two fish, one ≤ 28", one trip per vessel and CHP per day, Wed closed all year, five Tuesdays closed, annual limit=4, CSP provisions.	1.890	2.054	+0.164	+8.7%
2020	Two fish (one ≤ 26" thru 6/14, ≤ 32" after 6/14), one trip per vessel and CHP per day, Tues and Wed closed thru 6/14, annual limit=4 prior to 6/14, CSP provisions.	1.710	1.567	-0.143	-8.4%
2021	Two fish (one ≤ 32"), one trip per vessel and CHP per day, Wednesdays closed, CSP provisions.	1.950	2.455	0.505	25.9%
2022	Two fish (one ≤ 28"), one trip per vessel and CHP per day, Wednesdays closed, CSP provisions.	2.110	1.741	-0.369	-17.5%

^a-Removals includes harvest and release mortality.

Table 2.5. Area 3A sport halibut yield (excluding release mortality) by sector since 2000. Charter harvest (no. fish) from charter logbook data beginning in 2014 and estimated using the ADF&G Statewide Harvest Survey before 2014.

Year	Charter			Unguided			Total Sport Harvest		
	Harvest (no. fish)	Avg. Wt. (lb net)	Yield (Mlb)	Harvest (no. fish)	Avg. Wt. (lb net)	Yield (Mlb)	Harvest (no. fish)	Avg. Wt. (lb net)	Yield (Mlb)
2000	159,609	19.67	3.140	128,427	16.86	2.165	288,036	18.42	5.305
2001	163,349	19.18	3.132	90,249	17.09	1.543	253,598	18.43	4.675
2002	149,608	18.20	2.724	93,240	15.86	1.478	242,848	17.30	4.202
2003	163,629	20.67	3.382	118,004	17.34	2.046	281,633	19.27	5.427
2004	197,208	18.60	3.668	134,960	14.35	1.937	332,168	16.88	5.606
2005	206,902	17.83	3.689	127,086	15.61	1.984	333,988	16.98	5.672
2006	204,115	17.95	3.664	114,887	14.57	1.674	319,002	16.73	5.337
2007	236,133	16.95	4.002	166,338	13.71	2.281	402,471	15.61	6.283
2008	198,108	17.05	3.378	145,286	13.37	1.942	343,394	15.49	5.320
2009	167,599	16.31	2.734	150,205	13.47	2.023	317,804	14.97	4.758
2010	177,460	15.20	2.698	124,088	12.79	1.587	301,548	14.21	4.285
2011	184,293	15.16	2.793	128,464	12.57	1.615	312,757	14.09	4.408
2012	173,582	13.16	2.284	113,359	11.83	1.341	286,941	12.64	3.626
2013	199,248	12.62	2.514	121,568	11.94	1.452	320,816	12.36	3.966
2014	174,351	11.67	2.034	127,125	12.06	1.533	301,476	11.83	3.568
2015	163,632	12.63	2.067	136,225	11.86	1.616	299,857	12.28	3.682
2016	158,212	12.67	2.004	128,582	11.96	1.538	286,794	12.35	3.542
2017	142,664	14.55	2.076	108,972	14.04	1.530	251,636	14.33	3.606
2018	136,312	13.75	1.874	105,880	14.69	1.555	242,192	14.16	3.429
2019	139,082	14.64	2.036	107,722	15.62	1.682	246,804	15.06	3.718
2020	106,589	14.58	1.554	90,766	15.62	1.418	197,355	15.06	2.971
2021	184,441	13.21	2.437	95,353	14.45	1.378	279,794	13.64	3.815
2022	169,592	10.18	1.727	75,911	11.78	0.894	245,503	10.68	2.621

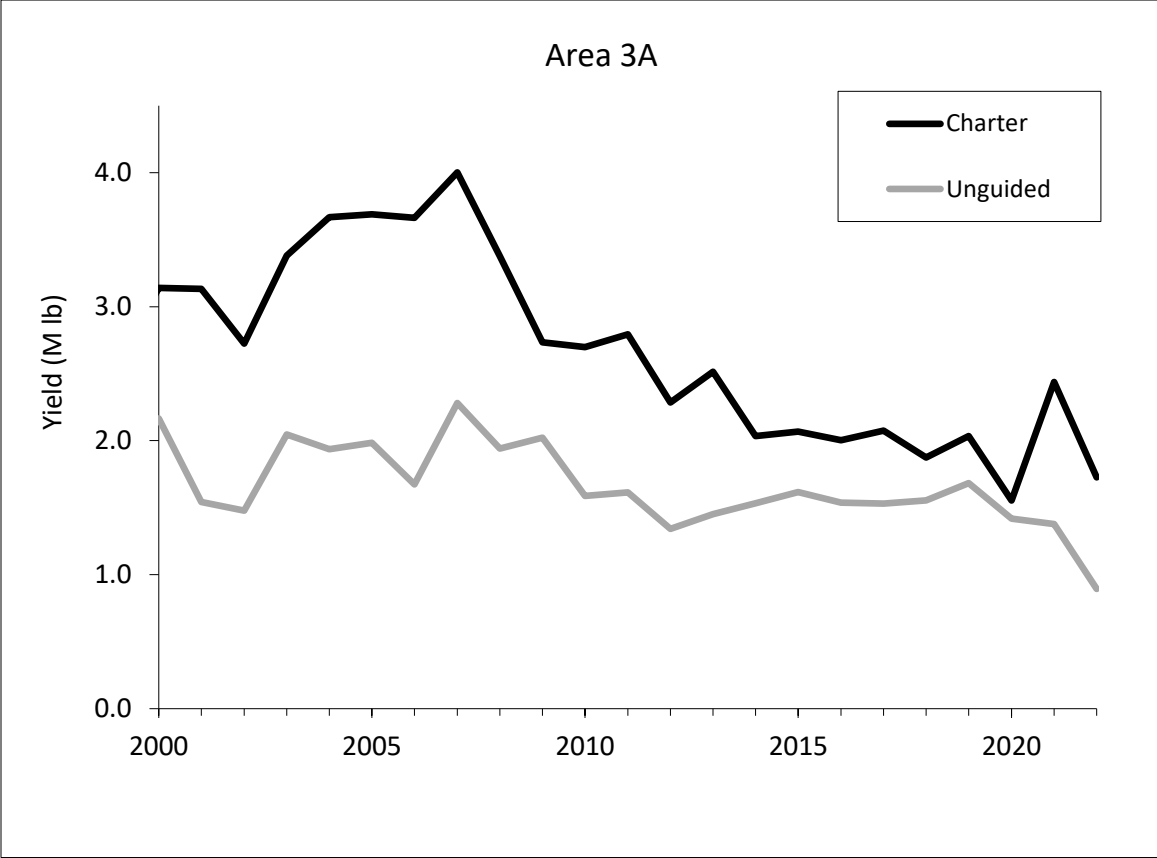


Figure 2.1. Charter and Unguided halibut yield (M lb) in Area 3A since 2000.

3. Comparison of Charter Logbook and Mail Survey Estimates

Table 3.1. Comparison of estimates of charter halibut yield based on numbers of fish reported harvested in charter logbooks and estimated via the ADF&G Statewide Harvest Survey (SWHS), 2006-2022. Logbook data include all reported harvest by clients, comps, and crew.

Area	Year	Logbook		SWHS	
		Yield (Mlb)	StdError	Yield (Mlb)	StdError
2C	2006	2.063	0.052	1.804	0.089
	2007	2.015	0.028	1.918	0.085
	2008	1.974	0.025	1.999	0.099
	2009	1.187	0.022	1.249	0.071
	2010	1.249	0.040	1.086	0.077
	2011	0.452	0.005	0.344	0.015
	2012	0.728	0.025	0.605	0.034
	2013	0.825	0.026	0.762	0.037
	2014	0.783	0.014	0.677	0.027
	2015	0.768	0.013	0.739	0.030
	2016	0.789	0.010	0.623	0.024
	2017	0.901	0.029	0.647	0.028
	2018	0.656	0.019	0.551	0.022
	2019	0.662	0.020	0.483	0.020
	2020	0.461	0.019	0.390	0.017
	2021	1.128	0.037	0.979	0.044
	2022	0.810	0.020	0.684	0.011
3A	2006	4.689	0.072	3.664	0.108
	2007	4.229	0.059	4.002	0.120
	2008	3.865	0.063	3.378	0.142
	2009	3.044	0.055	2.734	0.133
	2010	3.238	0.123	2.698	0.116
	2011	3.308	0.133	2.793	0.129
	2012	2.802	0.087	2.284	0.087
	2013	2.724	0.085	2.514	0.093
	2014	2.034	0.069	1.858	0.076
	2015	2.067	0.079	1.918	0.082
	2016	2.004	0.080	1.913	0.089
	2017	2.076	0.082	1.945	0.090
	2018	1.874	0.057	1.829	0.072
	2019	2.036	0.069	1.943	0.079
2020	1.554	0.044	1.334	0.051	
2021	2.437	0.085	2.166	0.090	
2022	1.727	0.055	1.436	0.062	

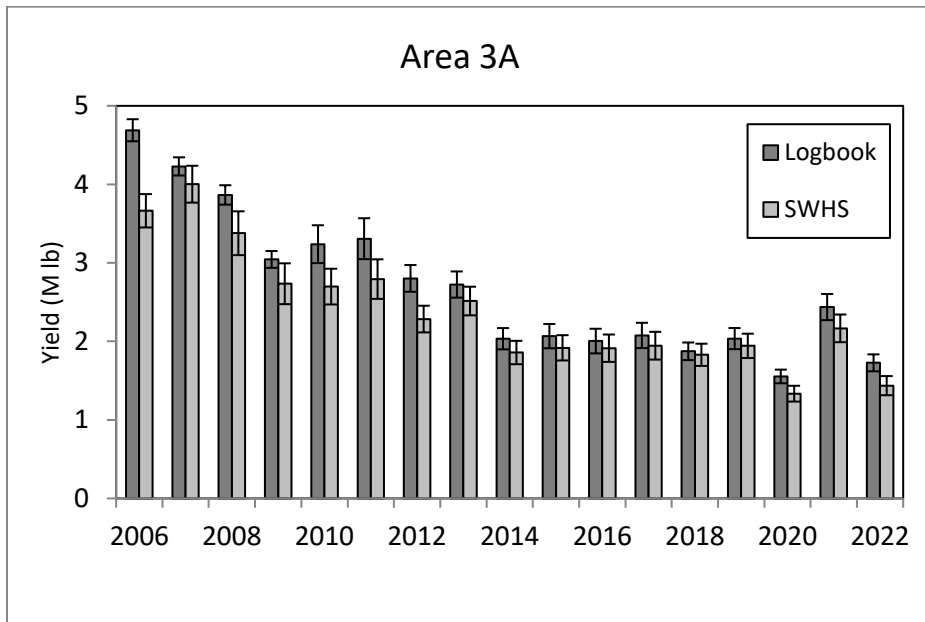
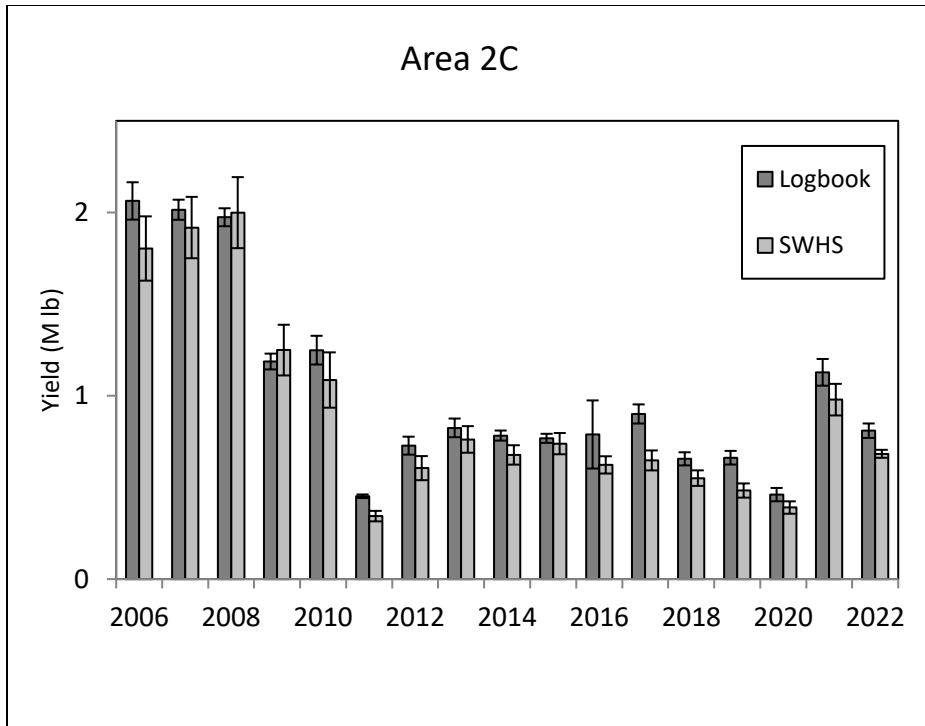


Figure 3.1. Comparison of logbook- and SWHS-based estimates of charter halibut yield in Areas 2C and 3A (with approx 95% confidence intervals).