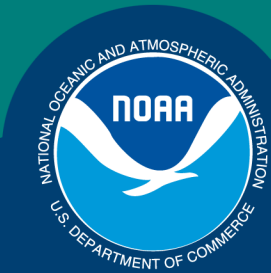


Science, Service, Stewardship



Economic Status Report Summary: BSAI Crab 2017

Crab Plan Team Meeting

September 21, 2017

Brian Garber-Yonts

Economics and Social Science Research Program,
AFSC

**NOAA
FISHERIES
SERVICE**

2016 SAFE Economic Status Reports available at:

<http://www.afsc.noaa.gov/REFM/Socioeconomics/SAFE/default.php>



The screenshot shows the NOAA Fisheries Alaska Fisheries Science Center website. The header includes the NOAA logo and the text "NOAA FISHERIES | ALASKA FISHERIES SCIENCE CENTER". Below the header is a navigation menu with links for "General Info", "Species", "Programs", "Publications", "Data & Tools", "Images", "Education & Outreach", and "Search". The main content area is titled "Economic and Social Sciences Research" and "Annual Economic Status Reports from the Stock Assessment and Fishery Evaluations". It features two sections: "Groundfish Fisheries of the Gulf of Alaska and Bering Sea/Aleutian Islands Area" and "King and Tanner Crab Fisheries of the Bering Sea and Aleutian Islands Regions". Each section has a list of links for "Most recent Economic Status Report (December 2013)", "Previous reports", "Data downloads", and "User feedback survey". On the right side, there is a sidebar menu with links for "REFM Home", "Socioeconomics", "Research", "Publications", "Posters", "Economic Status Reports", "Data Collection Programs", "Alaska Community Profiles", "Bibliography", "Resources", and "Personnel".

NOAA FISHERIES | ALASKA FISHERIES SCIENCE CENTER
NATIONAL OCEANIC AND ATMOSPHERIC ADMINISTRATION

General Info Species Programs Publications Data & Tools Images Education & Outreach Search

Economic and Social Sciences Research

Annual Economic Status Reports from the Stock Assessment and Fishery Evaluations

[Groundfish Fisheries of the Gulf of Alaska and Bering Sea/Aleutian Islands Area](#)

- [Most recent Economic Status Report \(December 2013\)](#)
- [Previous reports](#)
- [Data downloads](#)
- [User feedback survey](#)

[King and Tanner Crab Fisheries of the Bering Sea and Aleutian Islands Regions](#)

- [Most recent Economic Status Report \(December 2013\)](#)
- [User feedback survey](#)

REFM Home

Socioeconomics

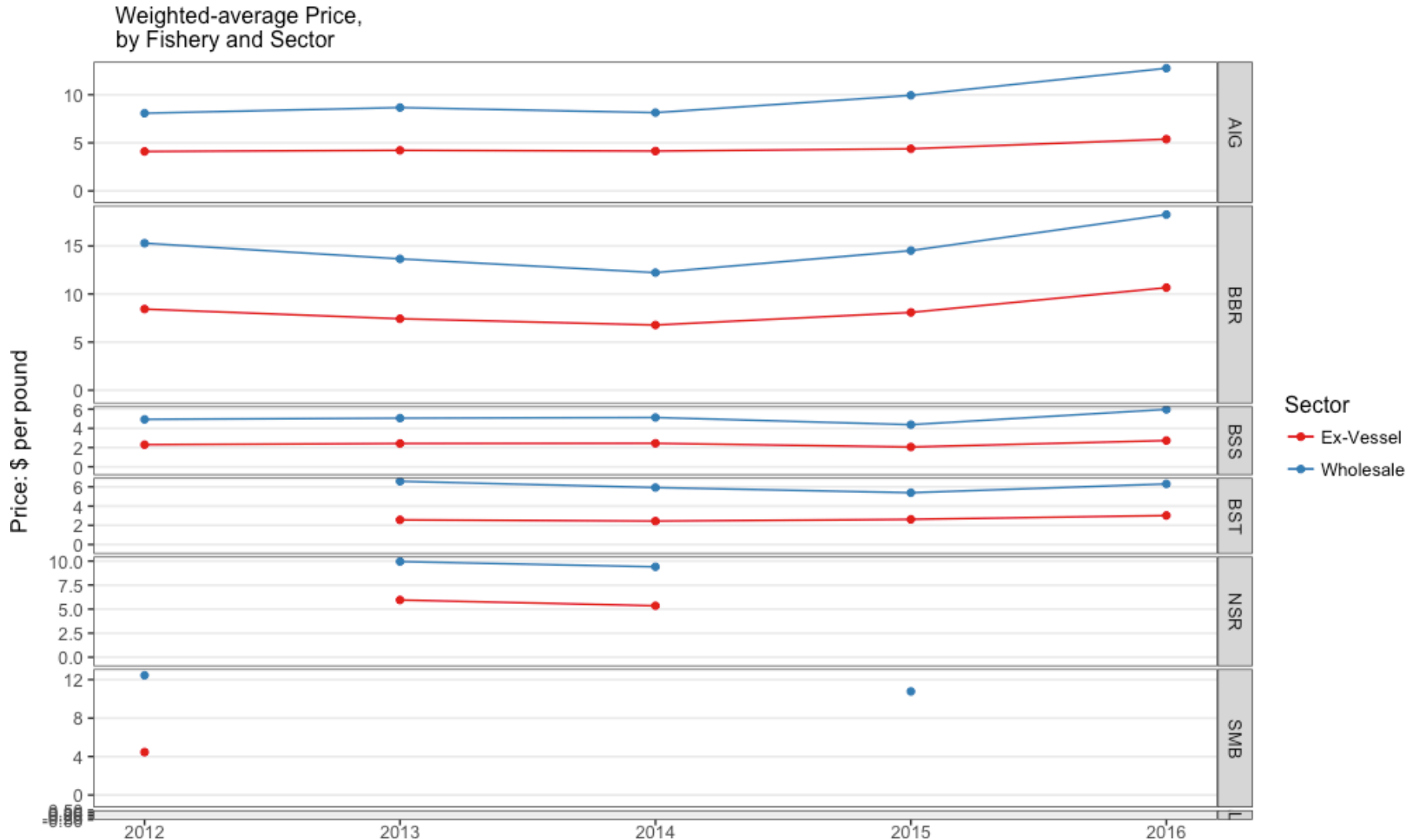
- Research
- Publications
- Posters
- Economic Status Reports
- Data Collection Programs
- Alaska Community Profiles
- Bibliography
- Resources
- Personnel

Summary of key economic indicators: Production and sales, 2016 BSAI crab fisheries

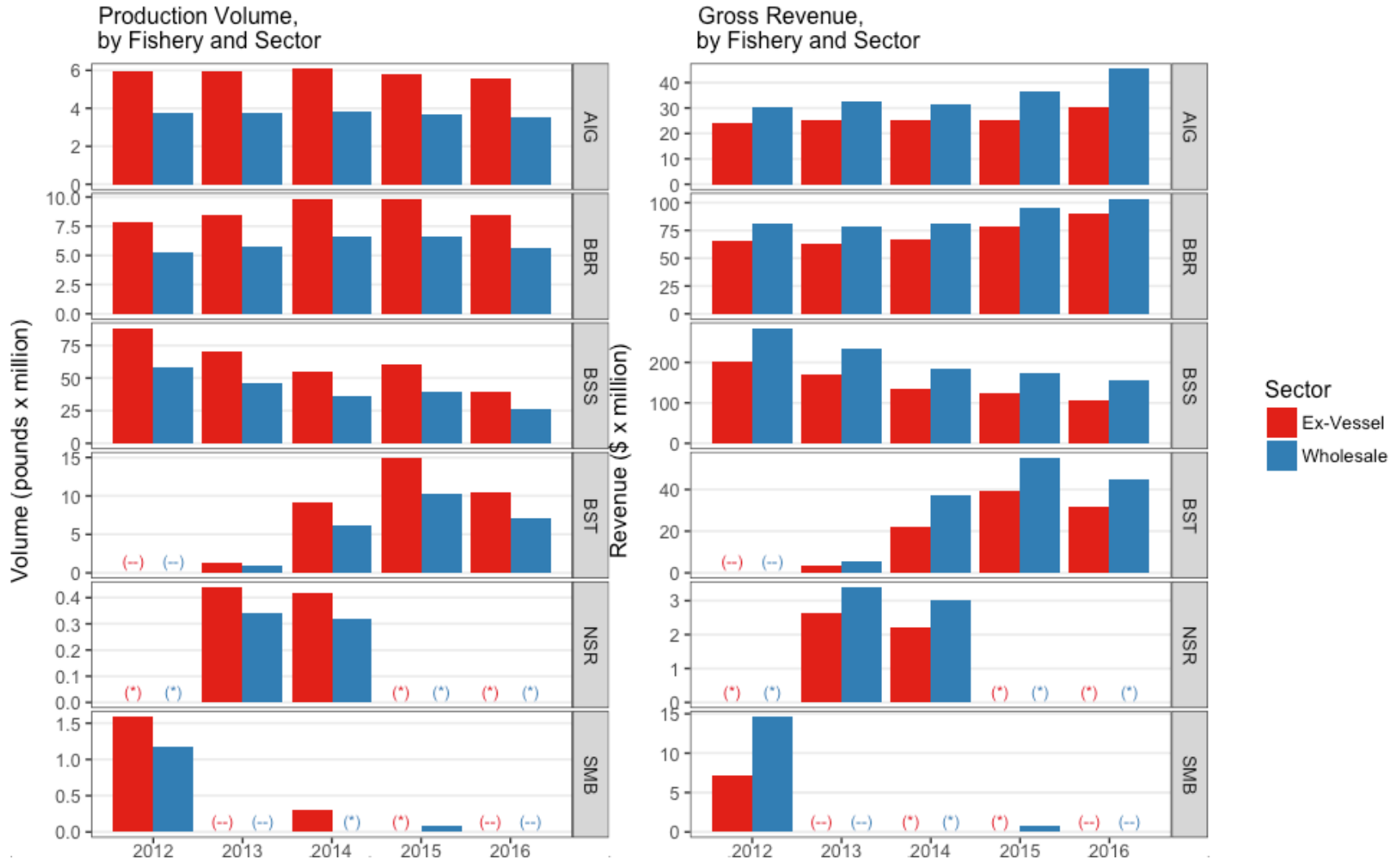
	Pounds (metric tons)	% change	Gross revenue	% change
Harvest sector	64 million (29 thousand <i>mt</i>)	-30%	\$259 million	-3.6%
Processing sector	42.3 million (19.2 thousand <i>mt</i>)	-30%	\$349 million	+3.9%

	Ex-vessel average price/lb	% change	1st Wholesale average price/lb	% change
AIG	\$5.38	23%	\$12.76	28%
BBR	\$10.67	32%	\$18.27	26%
BSS	\$2.73	33%	\$5.97	36%
BST	\$3.02	15%	\$6.31	17%

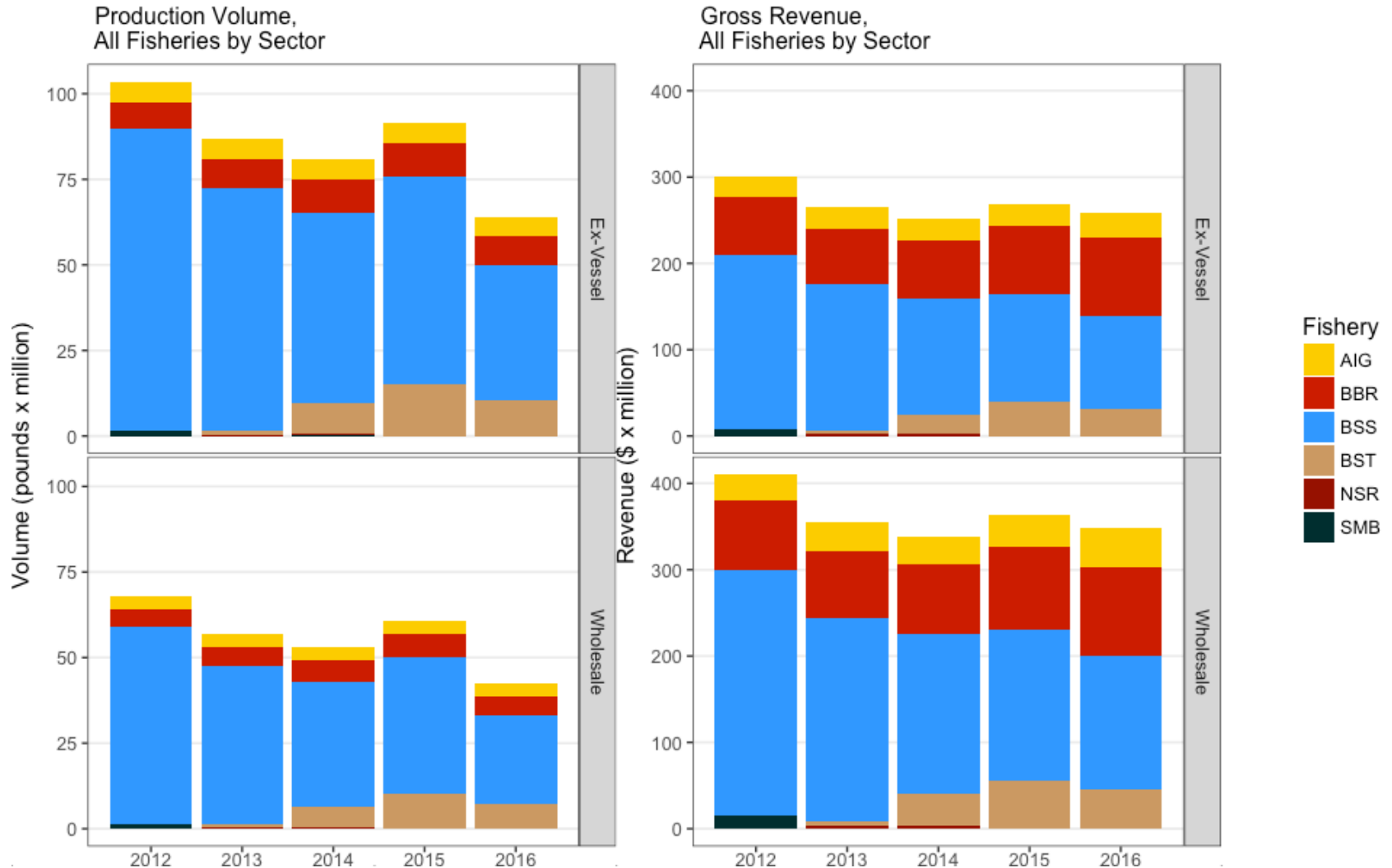
Summary of key economic indicators: 2012 – 2016 Ex-vessel and 1st Wholesale Price



Summary of key economic indicators: 2012 – 2016 production and sales by BSAI crab fishery



Summary of key economic indicators: 2012 – 2016 production and sales by BSAI crab fishery



Summary of key economic indicators: crab employment and earnings, 2016 CR fisheries

- Harvest sector

 - 80 active vessels over all CR fisheries (from 82 in 2015)

 - Crew positions: 1218 (from 1332 in 2015)

 - note: aggregated over distinct counts for each CR fishery

 - Crew share earnings: \$36 million (-5% Y/Y)

 - Captain share earnings: \$16 million (-5% Y/Y)

- Processing sector

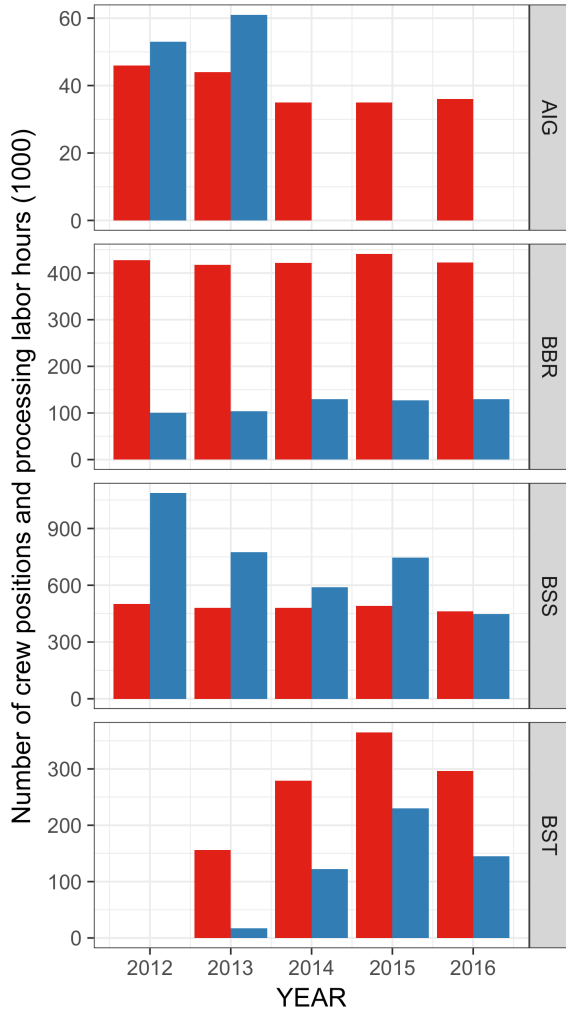
 - Paid hours: 788 thousand (-33% Y/Y)

 - Processing labor wages: \$9.6 million (-29% Y/Y)

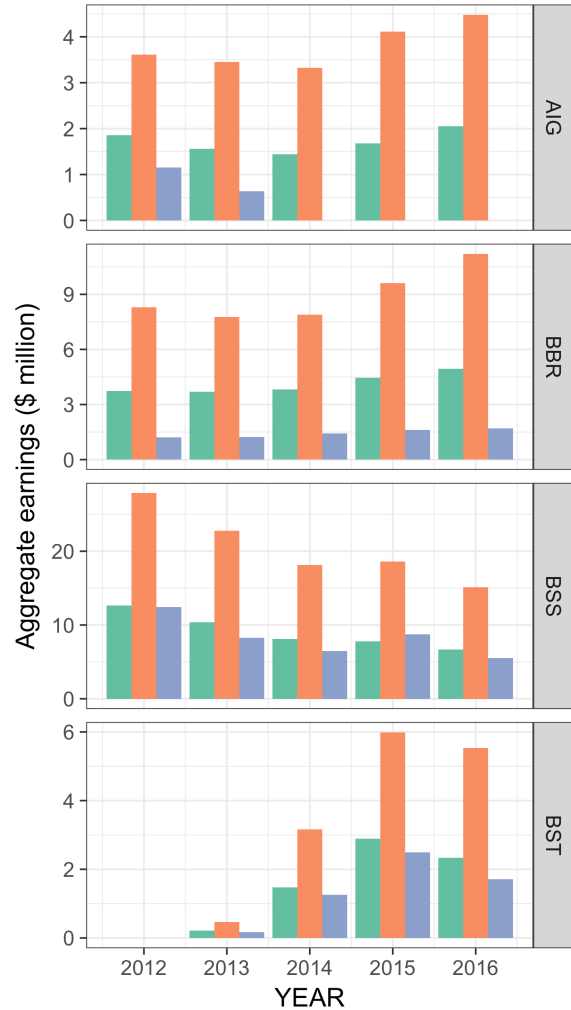
 - Estimated average hourly wage increased to \$11.93 (+\$1.25/hr)

Summary of key economic indicators: crab employment and earnings, 2012-2016 CR fisheries

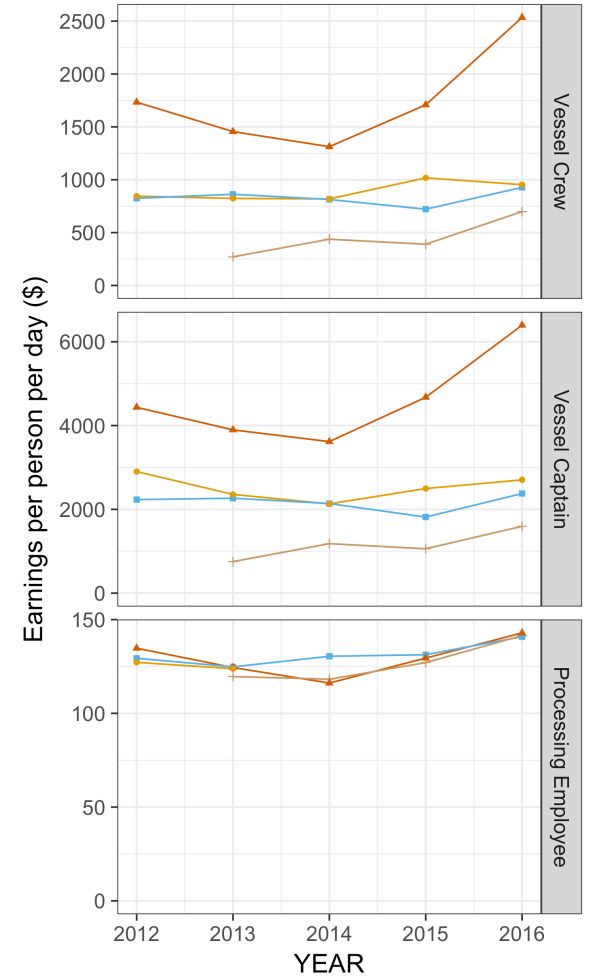
Aggregate Crab Employment
Crew Positions and Processing Lact



Aggregate Crab Labor Earnings,
Crew Share Pay and Processing Wages



Average Crab Labor Earnings per Individual
-crew pay per vessel-day
-processing pay per 12-hr shift



■ Crew positions
 ■ Processing Labor Hrs (1000)
 ■ Captain share earnings
 ■ Crew share earnings
 ■ Processing

Fishery Code
 —●— AIG
 —▲— BBR
 —■— BSS
 —◆— BST

Summary of key economic indicators: Crab IFQ lease activity, 2016 BBR, BSS, and BST fisheries

- BBR Fishery

 - 5.8 million pounds leased (69% of catch)

 - \$39.5 million total lease payments (44% of ex-vessel revenue)

 - Lease rate 62-64% of ex-vessel price (median)

- BSS Fishery

 - 27.5 million pounds leased (69% of catch)

 - \$37 million total lease payments (34% of ex-vessel revenue)

 - Lease rate 46-51% of ex-vessel price (median)

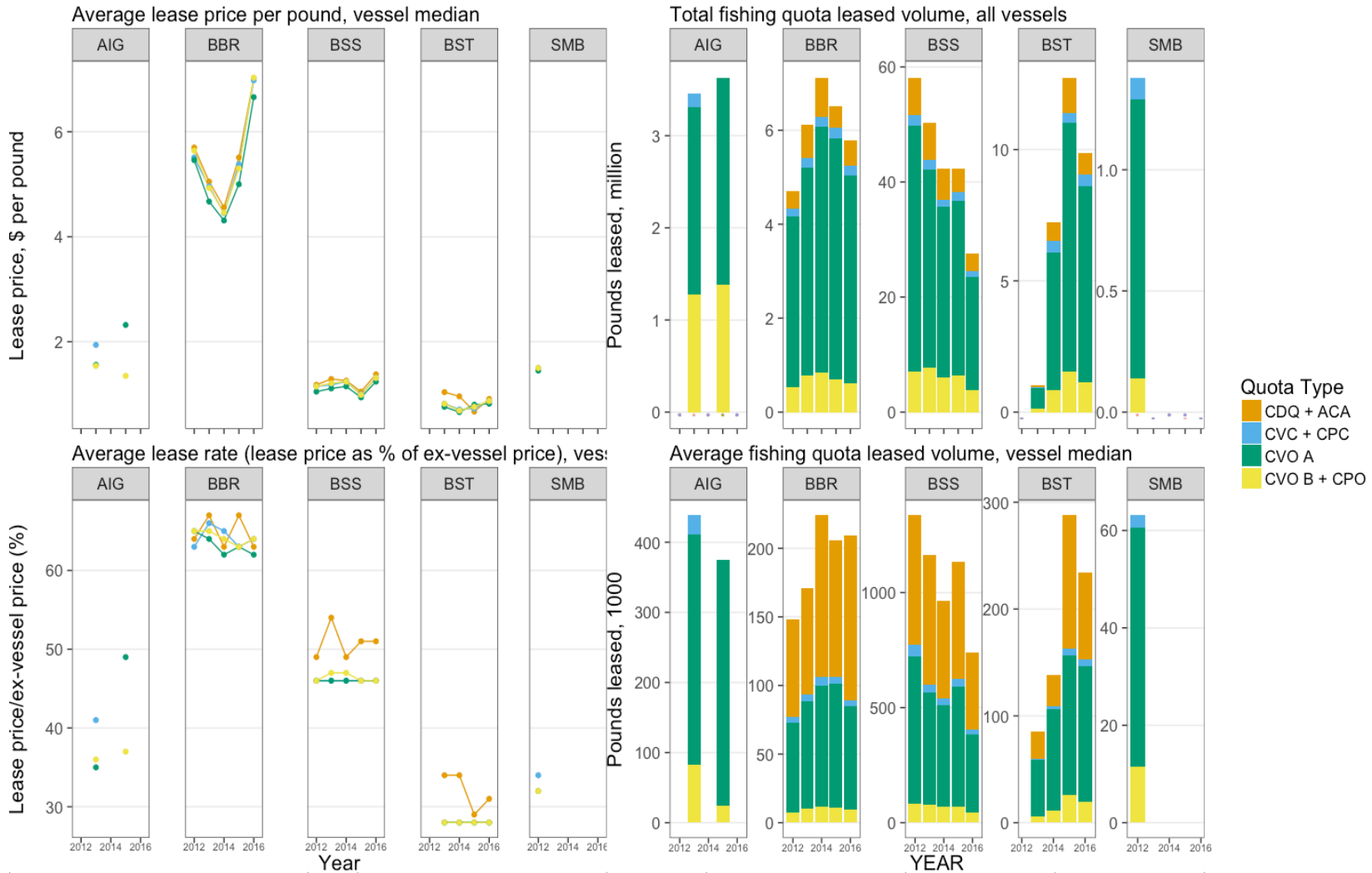
- BST Fishery

 - 9.9 million pounds leased (94% of catch)

 - \$9.2 million total lease payments (29% of ex-vessel revenue)

 - Lease rate 28-31% of ex-vessel price (median)

Summary of key economic indicators: crab IFQ lease activity, 2012 - 2015



BSAI Crab SAFE Economic Status Report

Economic Output

- Annual TAC/GHL, Landings, Deadloss, and Finished Product Volume
- Ex-vessel and First Wholesale Prices and Revenue Value of Production

Income and Employment

Operating, Production, and Capital Costs

Quota Holdings, Sales, and Leasing Activity

- QS/PQS Holding
- Harvest Quota Lease Activity and Average Prices
- Quota Share Sale Transfers and Average Prices
- IFQ and QS Price Comparison

Fishing Capacity, Effort, and Efficiency

Concentration of Catch Volume

International Trade in Crab Commodities

Catch-share Program Economic Performance Metrics

- IFQ quota and landings
- Utilization of available IFQ
- Number of entities holding IFQ crab share
- Active vessels fishing IFQ
- Number of trips harvesting IFQ Crab
- Season lengths
- Total IFQ-crab and non-IFQ-crab landings revenue
- Average combined IFQ crab price per pound
- IFQ crab revenue per vessel
- IFQ Crab revenue per trip

Price and Revenue Forecasts