

C7: ANALYSIS OF MANAGEMENT MEASURES FOR THE AREA 2C AND 3A CHARTER HALIBUT FISHERIES FOR 2025

ADAM ST. SAVIOUR - DECEMBER 2024



PRELIMINARY CHARTER ESTIMATES FOR 2024

| Area | Mean Weight (lb) | Harvest (no. fish) | Yield (lb) | Release Mortality (lb) | Total Removals (lb) | Allocation (lb) | Overage (lb) | Overage % |
|------|------------------|--------------------|------------|------------------------|---------------------|-----------------|--------------|-----------|
| 2C | 9.07 | 89,303 | 810,319 | 32,416 | 842,735 | 810,000 | 32,735 | 4.0% |
| 3A | 9.85 | 161,439 | 1,590,586 | 16,724 | 1,607,309 | 1,890,000 | -282,691 | -15.0% |

2024 Regulations

2C –

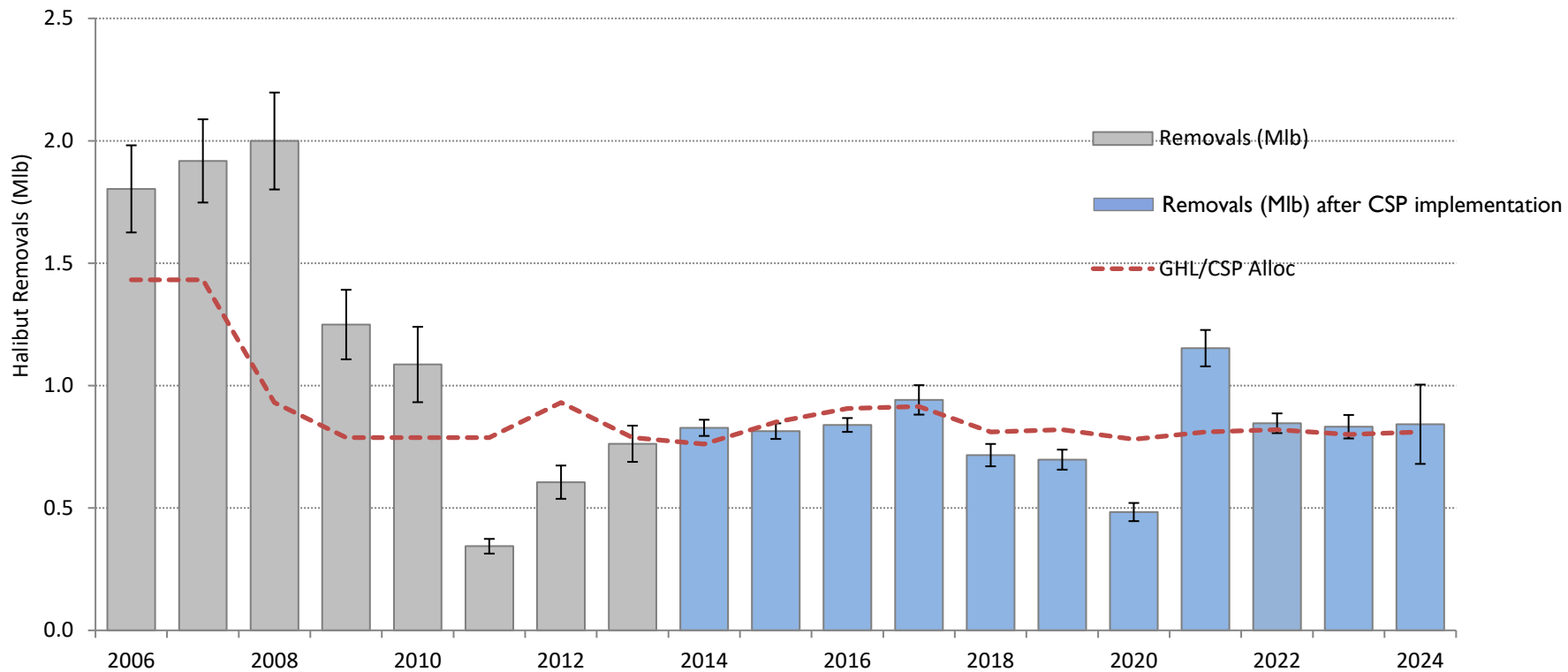
- One fish bag limit
- Reverse slot size limit of less than or equal to 40 inches or greater than or equal to 80 inches; lower slot reduced to 36 inches July 15th
- Closed on Fridays starting July 19th

3A –

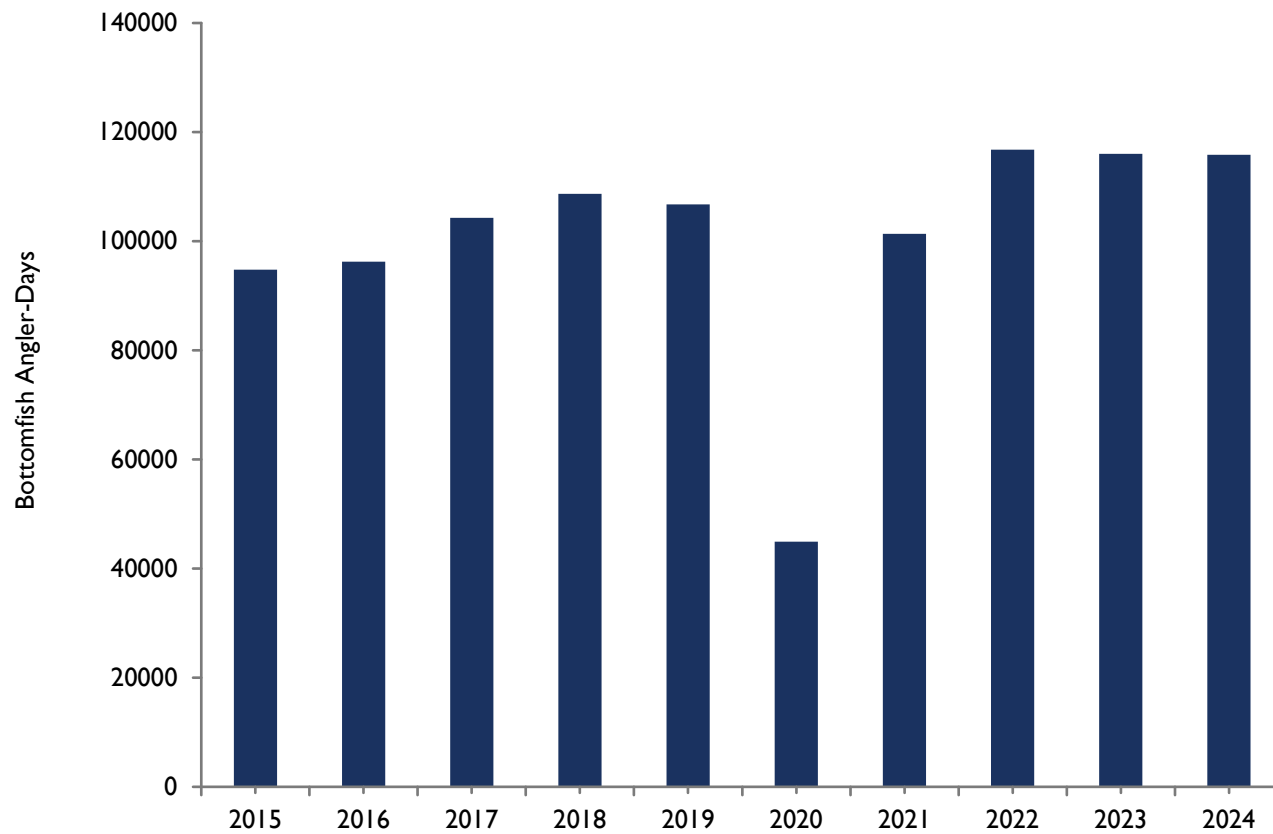
- Two fish bag limit: one fish of any size, one fish less than or equal to 28 inches
- One trip per vessel per day and per charter halibut permit per day
- Wednesdays closed to retention of halibut

2C CHARTER HALIBUT REMOVALS

Area 2C - Charter

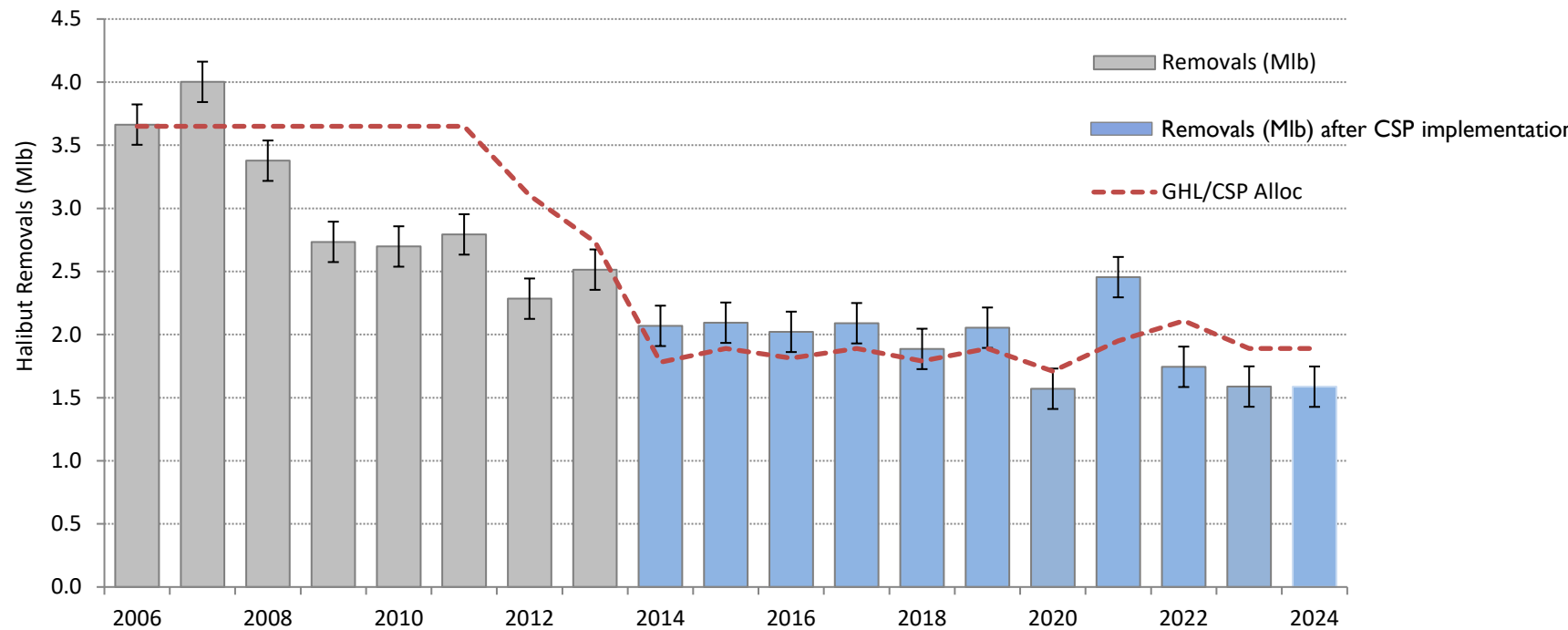


2C EFFORT

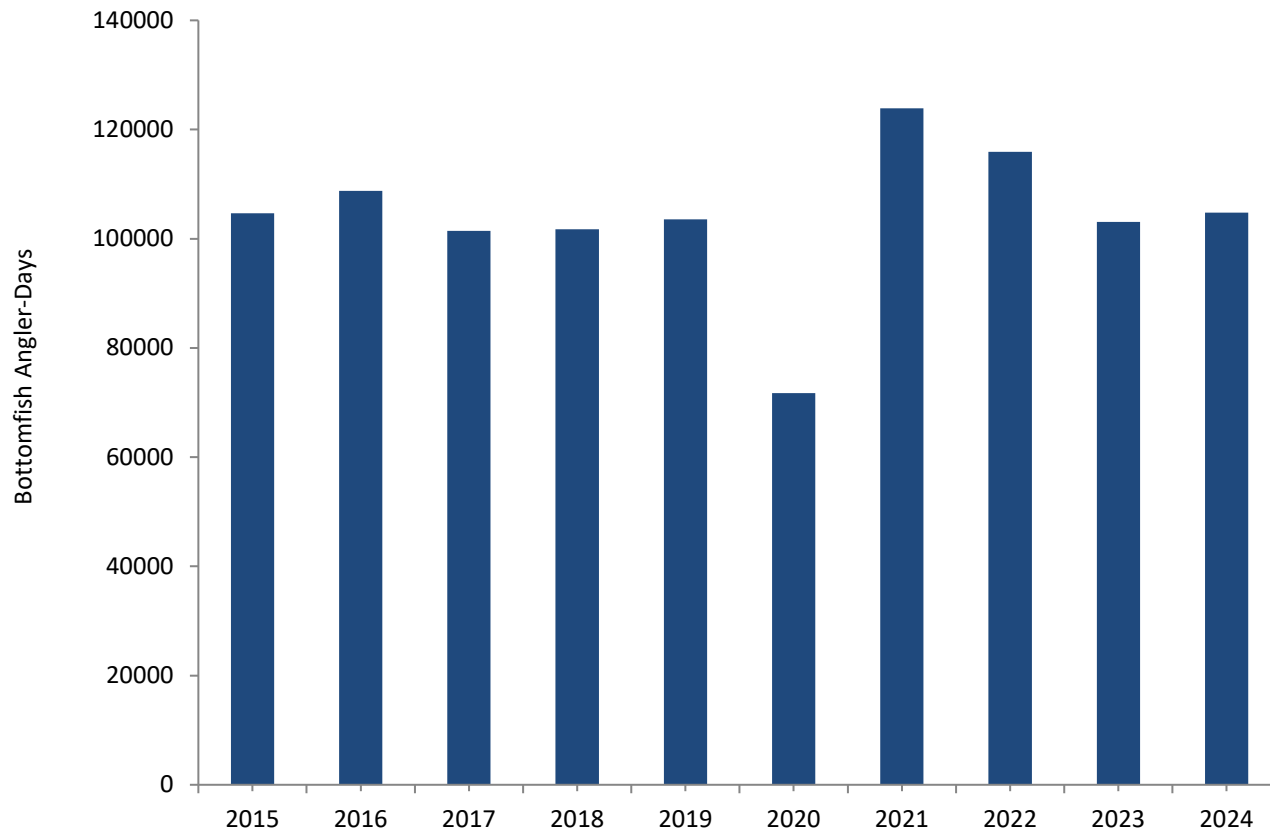


3A CHARTER HALIBUT REMOVALS

Area 3A - Charter



3A EFFORT



BUSINESSES AND VESSELS HARVESTING HALIBUT

2C

| | Businesses | Vessels |
|-------------|------------|---------|
| 2015 | 241 | 515 |
| 2016 | 248 | 532 |
| 2017 | 248 | 537 |
| 2018 | 244 | 533 |
| 2019 | 256 | 545 |
| 2020 | 192 | 386 |
| 2021 | 232 | 496 |
| 2022 | 235 | 523 |
| 2023 | 238 | 536 |
| 2024 | 238 | 542 |

3A

| | Businesses | Vessels |
|-------------|------------|---------|
| 2015 | 250 | 407 |
| 2016 | 240 | 388 |
| 2017 | 227 | 374 |
| 2018 | 232 | 391 |
| 2019 | 226 | 399 |
| 2020 | 203 | 343 |
| 2021 | 231 | 392 |
| 2022 | 220 | 387 |
| 2023 | 221 | 396 |
| 2024 | 216 | 395 |



ANALYSIS OF MANAGEMENT MEASURES FOR 2025



CHARTER ALLOCATION FOR 2025

- Allocations are currently unknown
- The IPHC's Regulatory Area TCEYs and allocations for 2024
- We have used the 2024 allocations as a reference for this analysis

| | 2024 Allocation |
|-----------|----------------------------|
| 2C | 0.810 Mlb |
| 3A | 1.890 Mlb |



2C – STATUS QUO FORECAST

- Table 2C.3
- 89,727 halibut
 - 95% confidence interval + - 2,457
- Used preliminary 2024 effort as 2025 forecast
 - 2C regulations in 2024 specifically targeted effort by closing days
- HPUE used data from 2009 – 2019 and 2022-2024
 - Substantial HPUE increases in 2020 and 2021, likely related to changes in size limits



2C – STATUS QUO FORECAST

Table 2C.3 (continued)

Status Quo Regulations:

- One fish bag limit
- Reverse slot limit of less than or equal to 40 or greater than or equal to 80 inches; lower slot reduced to 36 inches July 15th
- Fridays closed starting July 18th
- Projected average weight: 9.21 lbs
- Release mortality: 35,353 lbs

**Status Quo
Regulations
Removals
Projection**

0.862 Mlb



2C – MANAGEMENT MEASURES FOR 2025

- **Reverse Slot** ranging from 32 – 50 inches on the low end and 50 – 80 inches on the upper end
 - Reverse Slot confined to ranges of 35 – 40 inches on the low end and a limit of one trip per vessel and one trip per permit per day.
- **Reverse Slot with day closures** and savings in removals displayed for each day of closure
 - Analyzed for each day from May 15 – September 15 or for the entire season
 - Analyzed for lower slot limits ranging from 32 inches to 50 inches, and an upper slot limit of 80 inches
 - Reverse Slot confined to ranges of 32 – 42 inches on the low end and 80 inches on the upper end and a limit of one trip per vessel and one trip per permit per day.
- **Differential Reverse Slot** displayed in removals
 - Analyzed for lower slot limits ranging from 38-42 inches at the beginning of the season, changing to a range of 32-38 inches for the end of the season, and an upper slot limit of 80 inches throughout
 - Analyzed to change lower slot limits on July 1, July 15, and August 1



2C – REVERSE SLOT LIMIT

- Table 2C.4
- Lower limits of 32 – 50 inches, upper limits of 50 – 80 inches
- Removal estimates range from 0.695 Mlb to 1.934 Mlb
- Some combinations of lower limits 32 –35 inches and upper limit of 70 – 80 inches are below the 2024 allocation

**Options Below 2024
Allocation (0.810 Mlb)?**

Yes

2C – REVERSE SLOT LIMIT WITH ONE TRIP PER DAY

Table 2C.5

| | | Upper Length Limit (in) |
|-------------------------|----|-------------------------|
| | | 80 |
| Lower Length Limit (in) | 35 | 0.783 |
| | 36 | 0.831 |
| | 37 | 0.860 |
| | 38 | 0.905 |
| | 39 | 0.938 |
| | 40 | 0.966 |

Options Below 2024 Allocation (0.810 Mlb)?

Yes

2C – REVERSE SLOT LIMIT WITH DAILY SAVINGS

- Table 2C.6 a-c
 - Tuesdays, Thursdays, and Saturdays
- Results are presented as daily savings in pounds (not Mlb)
- Lower limits of reverse slot 32 – 50 inches, upper limit of 80 inches
- Lower slots 35 inches and less were below the 2024 allocation without any day closures

**Options Below 2024
Allocation (0.810 Mlb)?**

Yes



2C – REVERSE SLOT LIMIT WITH DAILY SAVINGS AND A ONE TRIP LIMIT

- Table 2C.7 a-c
 - Tuesdays, Thursdays, and Saturdays
- Results are presented as daily savings in pounds (not Mlb)
- Lower slots 35 inches and less were below the 2024 allocation without any day closures

| | Trip Limits |
|----------|-----------------------|
| SWHS | Proportional decrease |
| A | 6.7% |
| B | 2.2% |
| C | 1.8% |
| D | 0.3% |
| EF | 5.7% |
| G2C | 2.9% |
| 2C total | 2.7% |

Options Below 2024 Allocation (0.810 Mlb)?

Yes



2C – DIFFERENTIAL SLOT LIMIT

- Table 2C.8
- Lower limits of reverse slot 38 – 42 inches to 32 – 38 inches after July 1, July 15 and August 1
- Removal estimates range from 0.766 Mlb to 0.988 Mlb
- Removal estimates range from 0.746 Mlb to 0.972 Mlb with a **one-trip limit** (Table 2C.9)

Options Below 2024
Allocation (0.810 Mlb)?

Yes



2C – SUMMARY

Management Measures

Options Below 2024 Allocation (0.810 Mlb)?

Status Quo (reverse slot with lower limit of 40 inches and upper limit of 80 inches; reduce lower limit to 36 inches July 15)

No

Reverse slot limit with U32-U50 on the low end and O50-O80 on the high end. Additional savings for a one-trip limit

Yes

Reverse slot limit with U32-U50 on the low end and O80 on the high end, analyzed with a day of the week closures presented in savings per day. Additional savings for a one-trip limit

Yes

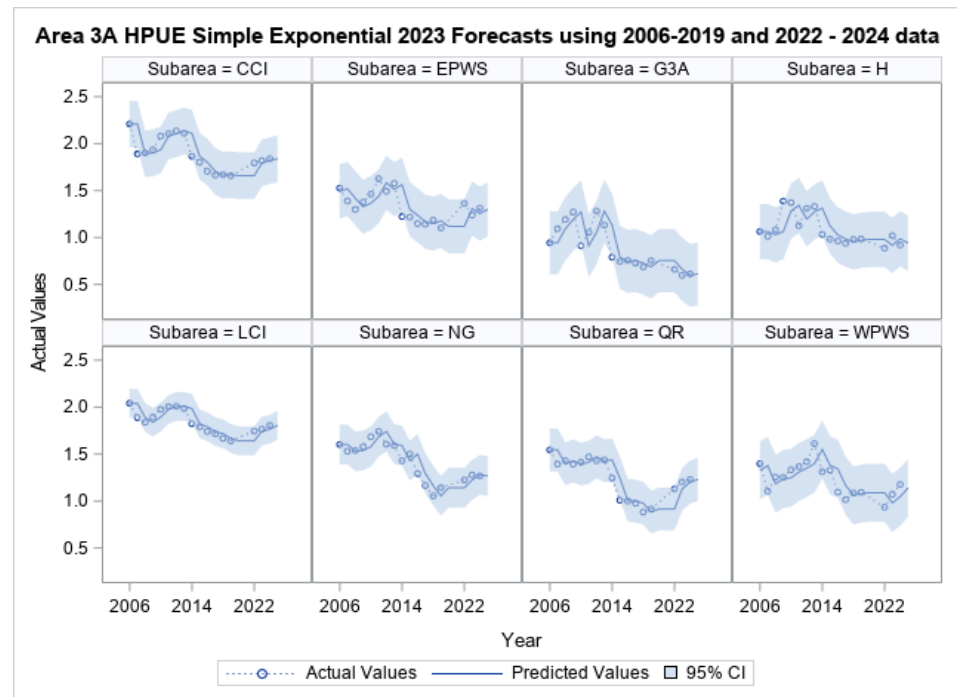
Reverse slot limit with U38-U42 change to U32-U38 after July 1, July 15, or August 1. Additional savings for a one-trip limit

Yes



3A – STATUS QUO FORECAST

- Table 3A.12
- 163,135 halibut
 - 95% confidence interval + - 4,745
 - 2024 effort was used as forecast
 - HPUE forecast used data through 2019 and 2022-2024



3A – STATUS QUO FORECAST

Table 3A.12 continued

Status Quo Regulations:

- Two fish bag limit: one any size, one less than or equal to 28 inches
- One trip per vessel per day and per charter halibut permit per day
- Wednesdays closed to retention of halibut

**Status Quo
Regulations
Removals
Projection**

1.764 Mlb



3A – MANAGEMENT MEASURES FOR 2025

- Day of the week closures on Wednesdays from June 4th – September 3rd or for the entire season
- Day of the week closures on Tuesdays from June 3rd – September 2nd or for the entire season
- Maximum size limits of 26 – 32 inches on one fish
- Annual limits of 2 – 4 fish
- Any combination of the above management measures



3A – STATUS QUO COMBINED WITH WEDNESDAY CLOSURES

- Table 3A.13
- Assumes a 28-inch size limit on one fish
- Projected removals for a given number of closed Wednesdays
- Removal estimates range from 1.762 Mlb to 2.079 Mlb

**Options Below 2024
Allocation (1.89 Mlb)?**

Yes



3A – STATUS QUO COMBINED WITH TUESDAY CLOSURES

- Table 3A.14
- Assumes a 28-inch size limit on one fish
- Projected removals for a given number of closed Wednesdays
- Removal estimates range from 1.506 Mlb to 1.762 Mlb

**Options Below 2024
Allocation (1.89 Mlb)?**

Yes



3A – CHANGES TO MAXIMUM SIZE LIMIT COMBINED WITH WEDNESDAY CLOSURES

- Table 3A.15
- Projected for 26-to-32-inch size limits on one fish
- Projected under various numbers of closed Wednesdays throughout year
- Removal estimates range from 1.677 Mlb to 2.289 Mlb

Options Below 2024
Allocation (1.89 Mlb)?

Yes



3A – CHANGES TO MAXIMUM SIZE LIMIT COMBINED WITH TUESDAY CLOSURES

- Table 3A.16
- Projected for 26-to-32-inch size limits on one fish
- Projected under various numbers of closed Tuesdays throughout year
- Removal estimates range from 1.425 Mlb to 1.919 Mlb

Options Below 2024
Allocation (1.89 Mlb)?

Yes



3A – MAXIMUM SIZE LIMITS COMBINED WITH ANNUAL LIMITS

- Table 3A.18
- Assume all other status quo management measures
- Projected for 26-to-32-inch size limits on one fish
- Projected for annual limits of two to four fish
- Annual limits of two to four fish could reduce harvest projections by 15.9% to 3.6%, respectively (Table 3A.17)
- Removal estimates range from 1.407 Mlb to 1.1.849 Mlb
- Harvest recording would be required
- Past violations of annual limits have included 0.2 – 1.0% of anglers

**Options Below 2024
Allocation (1.89 Mlb)?**

Yes



3A – SUMMARY

Management Measures

Options Below 2024 Allocation (1.89 Milb)?

Status quo (two-fish bag limit with a 28-inch maximum size limit on one fish, one trip per vessel and one trip per CHP per day, Wednesday closures all year)

Yes

Day of the week closures on Wednesdays from June 4th – Sept 3 or for the entire season

Yes

Day of the week closures on Tuesdays from June 3 – Sept 2 or for the entire season

Yes

Maximum size limits of 26 – 32 inches on one fish

Yes

Annual limits of 2 – 4 fish

Yes

Combination of the above management measures

Yes



ACKNOWLEDGEMENTS

- Ben Jevons and Kayla Buster – logbook data summaries and review
- Diana Tersteeg – Southeast data
- Clay Mckean and Marian Ford – Southcentral data
- Countless technicians – halibut measurements and angler interviews
- Sarah Marrinan – Council Staff
- Sarah Webster & Brianna Bowman – former ADF&G

- Funding:
 - State of Alaska General Funds
 - DJ-WB Federal Aid in Fish Restoration
 - Fish and Game Fund

