



NOAA
FISHERIES

Assessment of the Greenland turbot stock in the Bering Sea and Aleutian Islands

Meaghan Bryan

Projections were done using the AFSC projection model

Updated catch:
2018 - reduced to 1,835 t from 3,758 t

2019 - reduced to 3,579 t from maxABC

2020 recommended ABC is 8% higher than 2020 projected ABC from last year

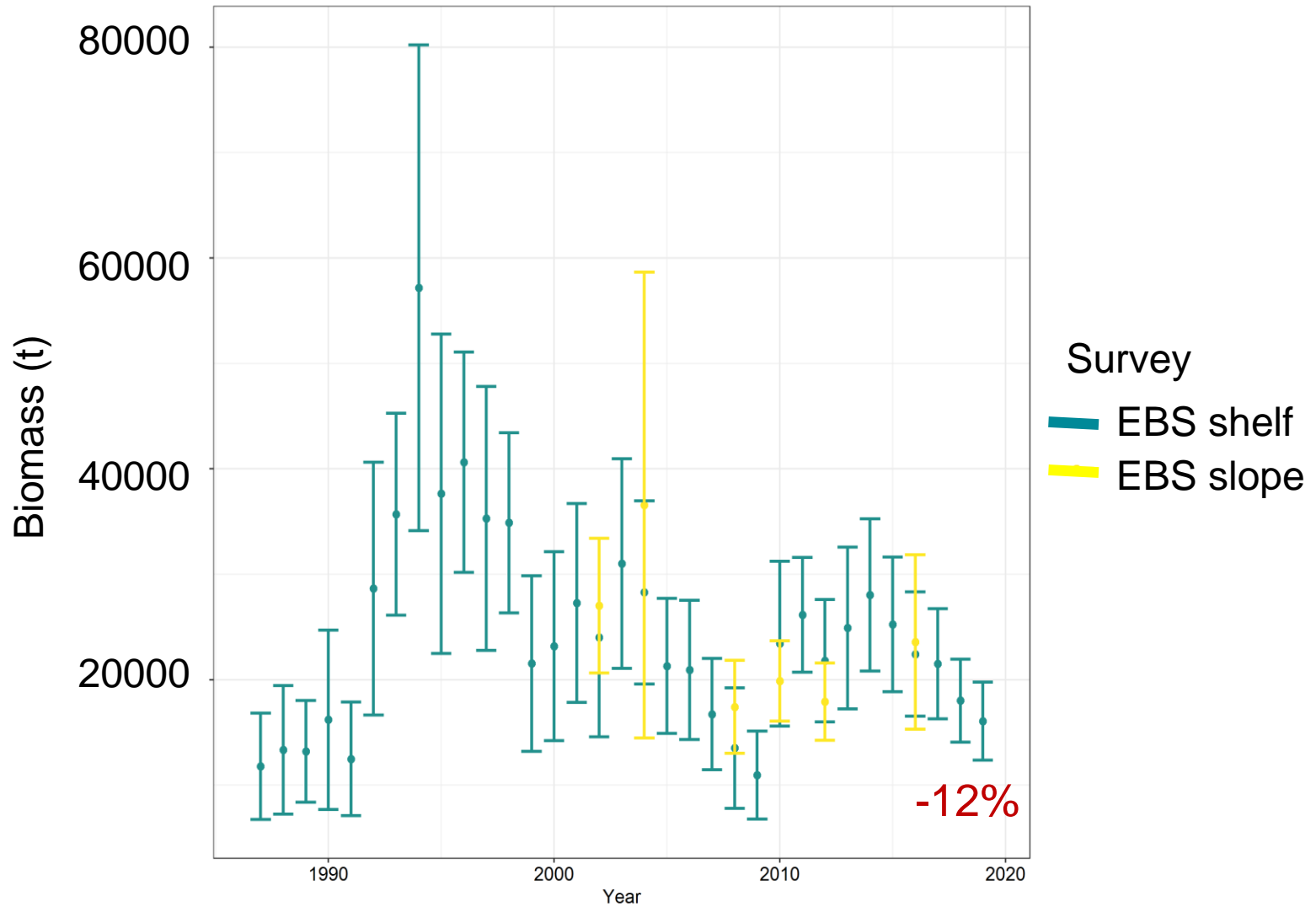
Quantity	As estimated or specified last year for:		As estimated or recommended this year* for:	
	2019	2020	2020	2021
M (natural mortality rate)	0.112	0.112	0.112	0.112
Tier	3a	3a	3a	3a
Projected total (age 1+) biomass (t)	105,930	98,876	106,101	98,532
Female spawning biomass (t)	54,244	52,743	57,094	53,617
Projected				
B_{100%}	90,534	90,534	90,534	90,534
B_{40%}	36,213	36,213	36,213	36,213
B_{35%}	31,687	31,687	31,687	31,687
F_{OFL}	0.21	0.21	0.21	0.21
maxF_{ABC}	0.18	0.18	0.18	0.18
F_{ABC}	0.18	0.18	0.18	0.18
OFL (t)	11,362	10,476	11,319	10,006
maxABC (t)	9,658	8,908	9,625	8,510
ABC (t)	9,658	8,908	9,625	8,510
	As determined last year for:		As determined this year for:	
Status	2017	2018	2018	2019
Overfishing	No	n/a	No	n/a
Overfished	n/a	No	n/a	No
Approaching overfished	n/a	No	n/a	No

Apportionment

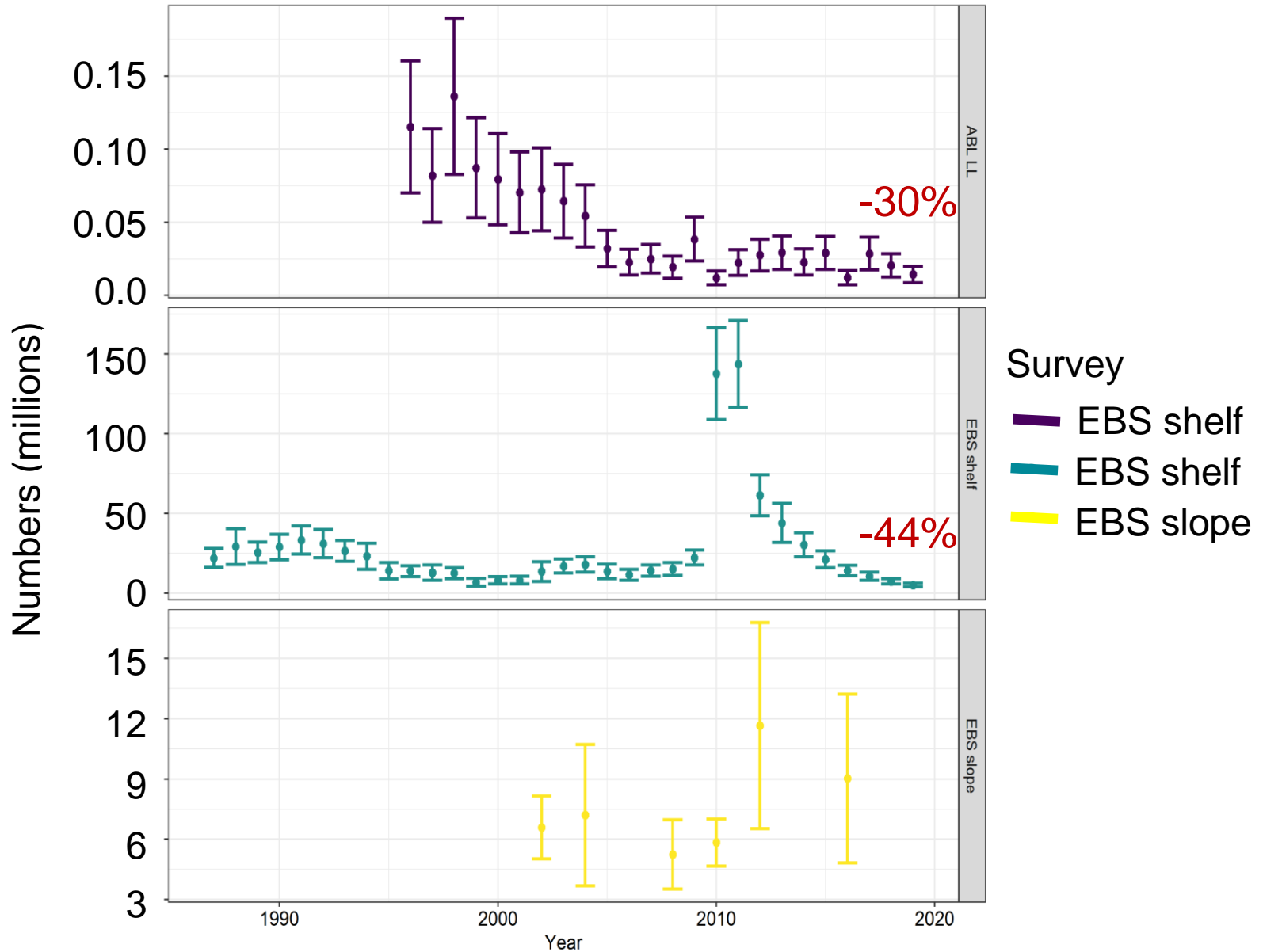
- Region specific ABCs
- Average proportion of adult biomass from the Bering Sea slope and Aleutian Islands surveys (overlapping years: 2008, 2010, 2012, 2016)
 - 87.3% - Bering Sea
 - 12.7% - Aleutian Islands

ABC	2020	2021
BSAI	9,625	8,510
Bering Sea	8,403	7,429
Aleutian Islands	1,222	1,080

Survey biomass estimates



Survey estimates - numbers



Catch-biomass ratios

