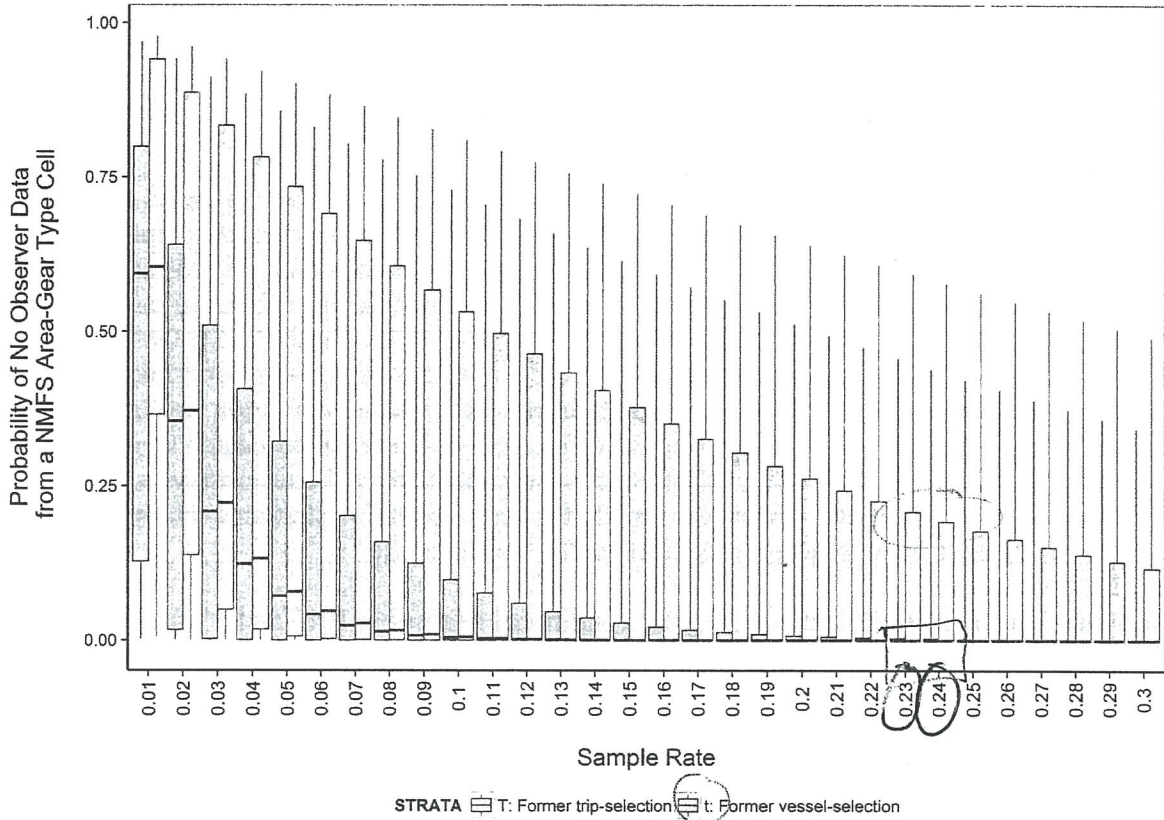


Public Testimony  
CS Andrew  
Richards



**Figure B-2:** Boxplot distribution of the probability of failing to obtain any observed trips within an estimation cell defined as NMFS area and gear type for the entire duration of 2015 within the t (blue) and T (red) strata as a function of changing selection probabilities (sample rate;  $r$ ). Boxplot distributions have been modified to reflect 90% of the outcomes within whiskers, whereas the lower and upper boxes depict the 25th and 75th percentiles and horizontal lines depict median (50th percentile) values. Selection rates are depicted only up to 0.3 (30%) to improve readability.