

An underwater photograph showing a group of reddish-brown fish, likely Blackspotted Rockfish, swimming near a large, green, branching coral structure. The background is dark, suggesting a deep-sea environment. The text is overlaid on the image in a yellow, serif font.

# GOA Rougheye & Blackspotted Rockfish

Shotwell, Hanselman, Heifetz

# RE/BS (Rougheye/Blackspotted)

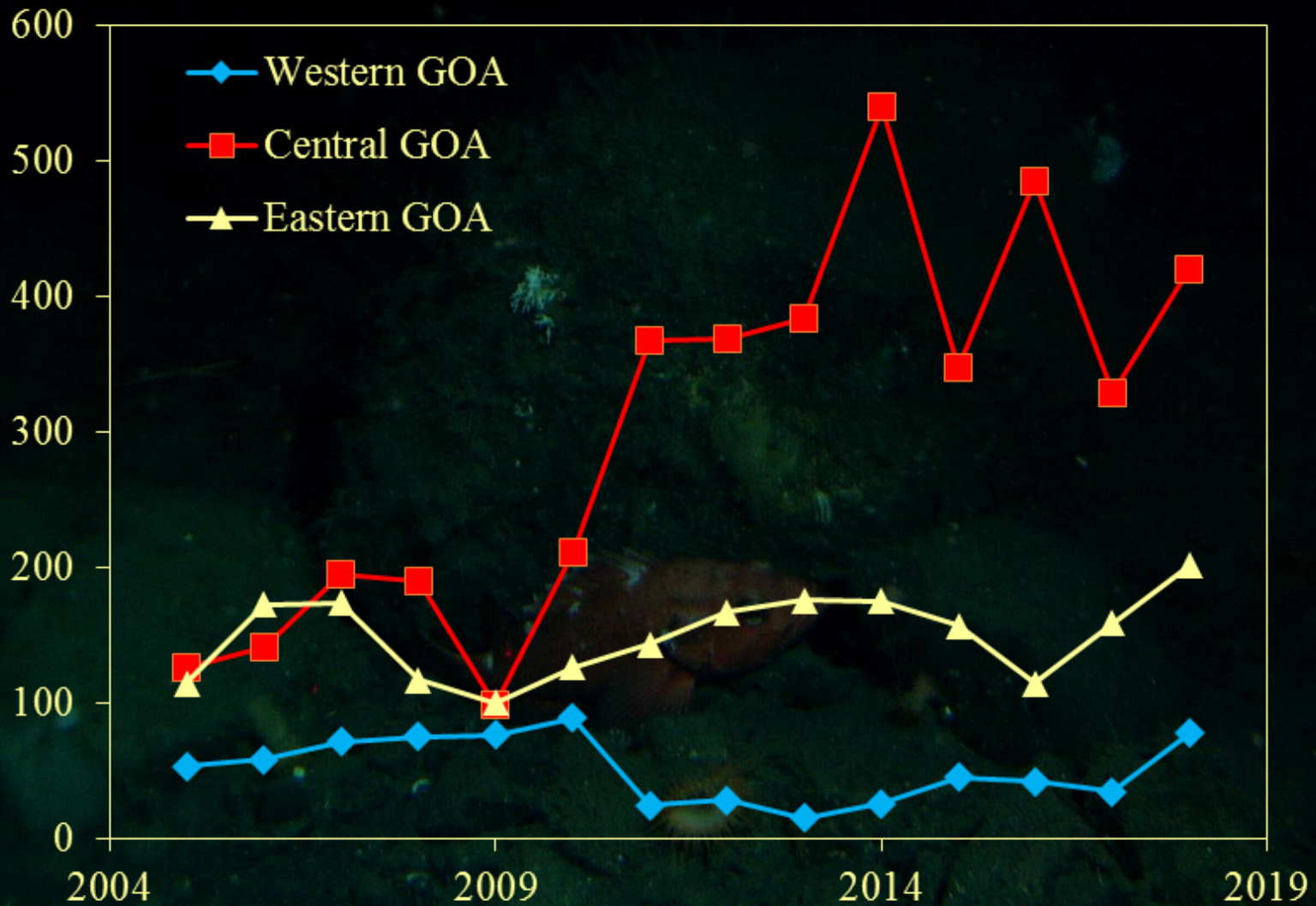
- Tier 3a species – RE/BS rockfish
  - Only updated the catches in the projection model
  - Updated 2017 and estimated 2018-2020 catches
- Catch update:
  - 2017 catch = 523 t and 2018 catch (10/6) = 700 t
  - Catches below 50% of ABC with no overages
- Recommended 2019 ABC: **1,428 t**
  - Slightly lower than 2018 ABC of 1,444 t
  - Exceptionally close to last year's projected 2019 ABC of 1,427 t



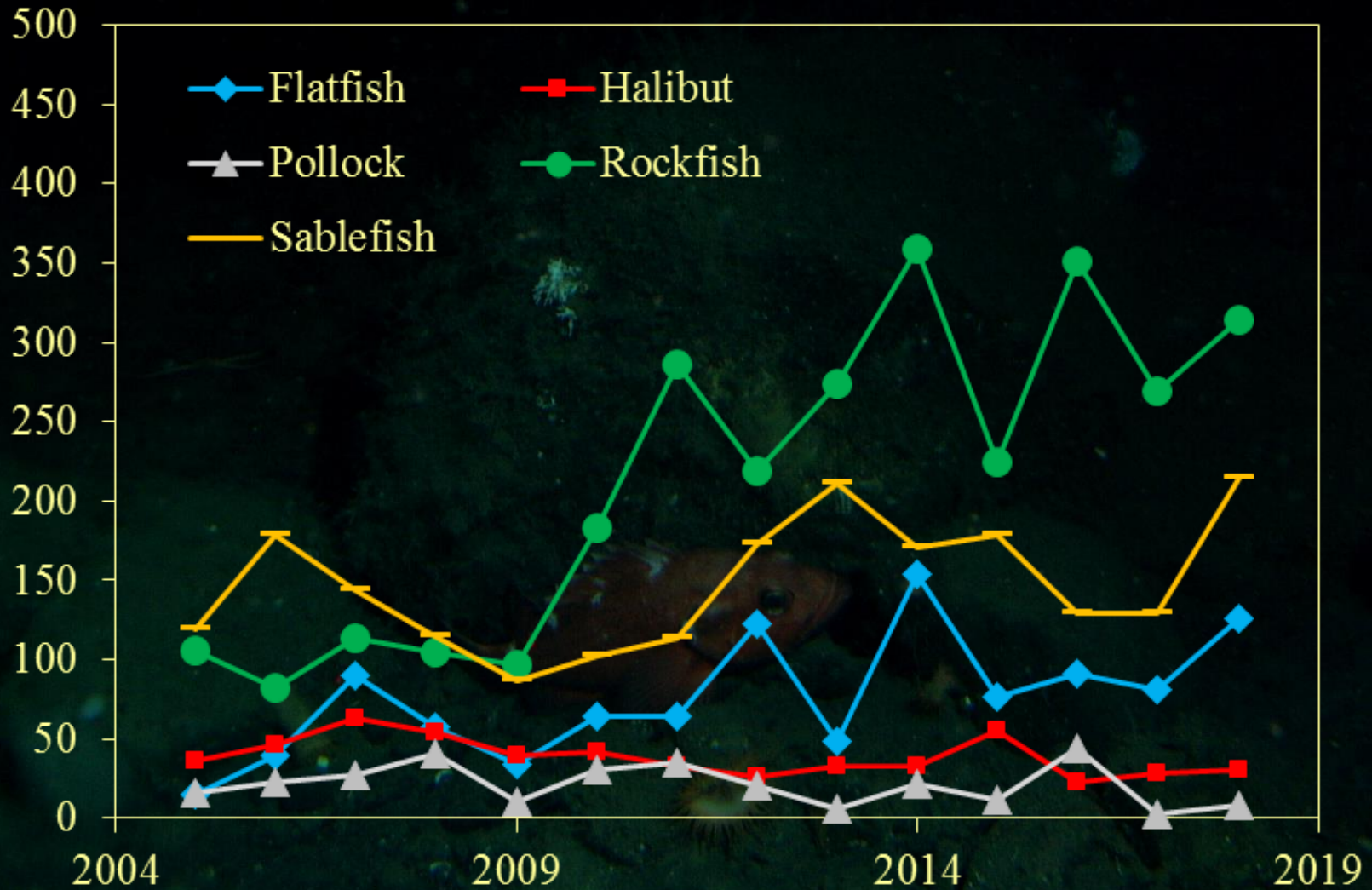
# RE/BS Fishery

- Gulfwide catch increased in 2018 compared to 2017, still within time series range
- In 2018, 1/3<sup>rd</sup> taken in longline fisheries, 2/3<sup>rd</sup> taken in trawl fisheries
- Generally 20%-60% of TAC, 48% in 2018
  - Increase occurred in all areas, no overages
  - Most increase in rockfish and sablefish fishery, some increase in flatfish fishery, stable in halibut and pollock

# RE/BS Catch by Region



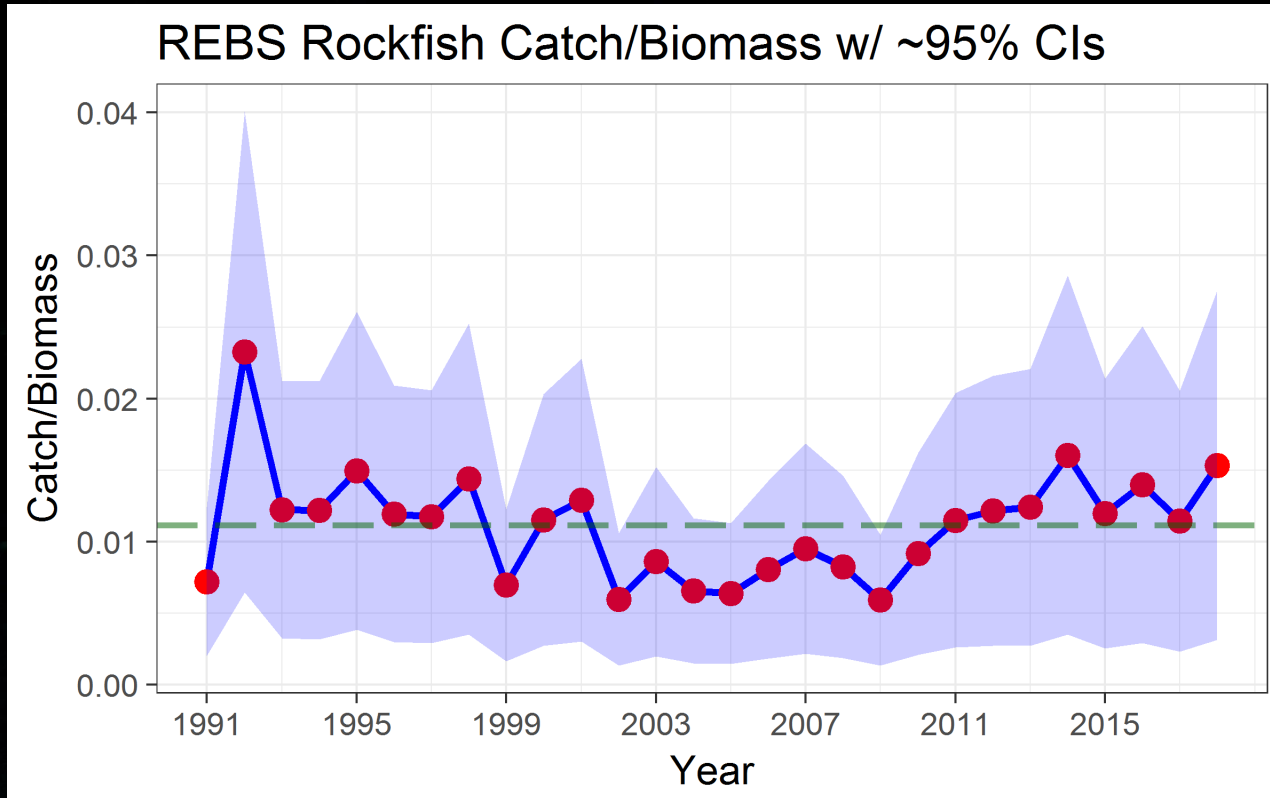
# RE/BS Catch by Fishery



# RE/BS Fishery Ages Update

- Project during 2017 on archived fishery ages
  - Uses otolith morphology and growth characteristics to distinguish two species
  - Enabled historic reconstruction of species composition in the fishery
- Preliminary results (Heifetz swan song at WGC)
  - Otoliths are pretty distinct between species (otolith weight being critical)
  - Implied that 2/3 of the catch is BS (however more otoliths come from LL which probably catch more BS)
  - Could be a cheaper/easier collection than genetics for the fishery because we take them anyway
  - Given current catches, still unlikely a conservation concern, summary report next full assessment

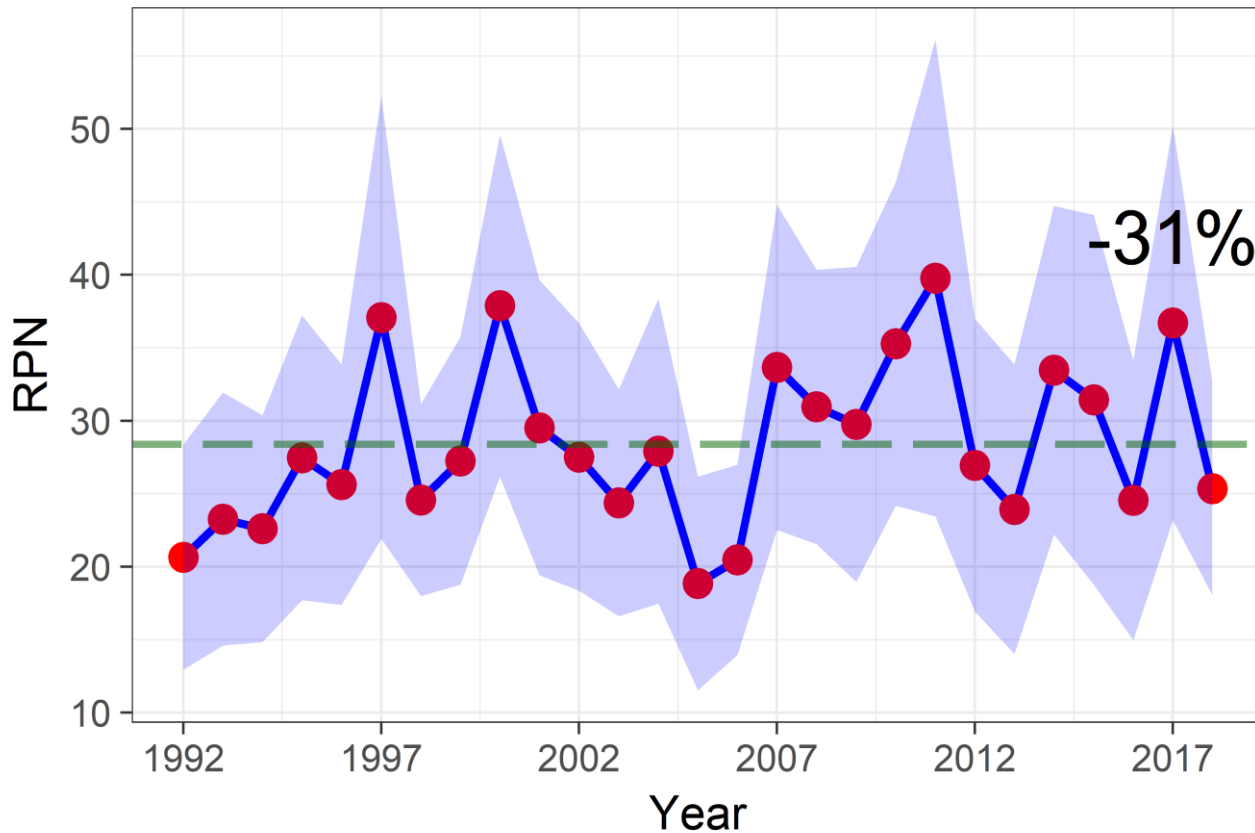
# Catch/Biomass Update



- C/B ranges from 0.006 to 0.02, lightly exploited stock
- 2018 C/B slightly up from long term mean but within range of past few years

# Longline Survey Update

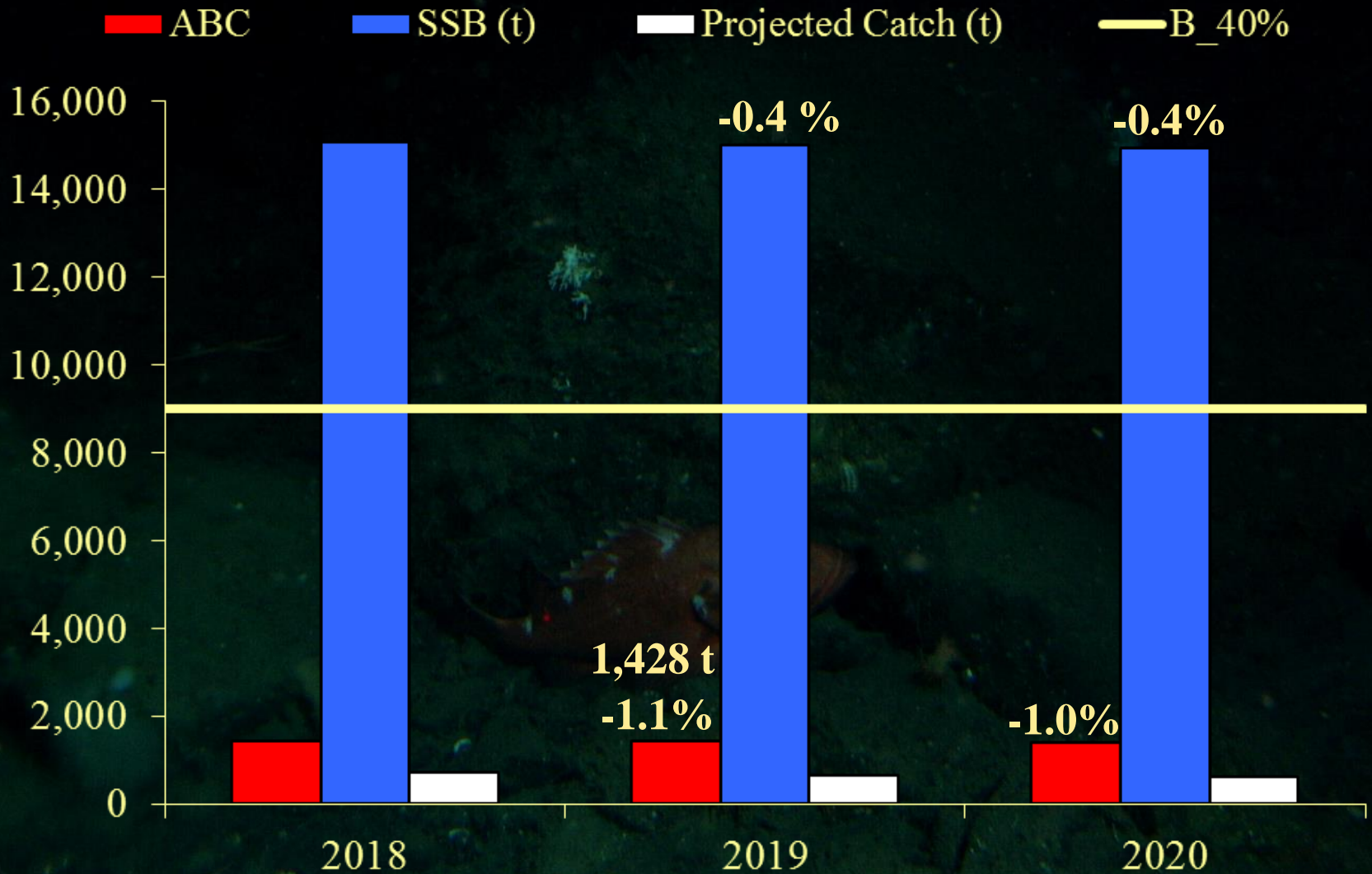
GOA Rougheye longline survey RPNs



- 2018 longline survey RPN down by 31%.
- Estimates by area all consistently down.
- Data not used for updating 2018 projection since partial assessment year.



# RE/BS Summary



# RE/BS Apportionment

	Western	Central	Eastern	Total
2018 ABC	176	556	712	1,444
<b>2019 ABC</b>	<b>174</b>	<b>550</b>	<b>704</b>	<b>1,428</b>
2018 OFL				1,735
<b>2019 OFL</b>				<b>1,715</b>

# Research Priorities

- Examine apportionment methods with two survey options using random effects and VAST models
- Evaluate life history characteristics of RE versus BS in bottom trawl genetic study
- Evaluate historical reconstruction of fishery ages to help guide management concerns on disproportionate harvest by species
- Provide fishery ages by gear type and consider new maturity information by species