



**NOAA  
FISHERIES**

**Alaska  
Fisheries  
Science  
Center**

# **Economic Status of the Groundfish Fisheries off Alaska, 2015**

**Presented by:**

**Ben Fissel and Steve Kasperski  
AFSC Economics and Social Sciences  
Research Program (ESSRP)**

**Nov. 14, 2016**

---

# ESSR Year in Review

- Personnel changes
- Conducted 1,248 surveys from Alaska fishing participants and businesses
- Assessed 334 Alaska communities for fisheries participation and social vulnerability and resilience
- Completed new Wholesale Market Profiles
- ESSR staff won 4 of the 6 NMFS Economics and Social Science Best Paper Competition Awards (2014-2016)
- Increasing focus on human dimensions and integration with other natural science colleagues

# New topics in Economics SAFE

- New Amendment 91 EDR section: skipper survey and fuel usage data collection, AFA BSAI pollock fleet, 2012-2015.
- Extensively revised community section: Includes indices of participation, processing engagement, and harvesting engagement
- Economic Performance Reports (completed in **bold**):
  - **BSAI pollock, BSAI Pacific cod, BSAI flatfish, BSAI rockfish, Atka mackerel, sablefish, GOA pollock, GOA Pacific cod, GOA arrowtooth, GOA rockfish**
  - What is the best way to incorporate these into the assessments? (currently some next to ecosystem, some as appendix, some mixed with another section.)
- Species specific breakouts of flatfish and rockfish ex-vessel and first-wholesale data. (currently in appendix).
- Economic data table restructuring: next year, leaning toward option 2 (BSAI/GOA specific sections), feedback from SSC.



# Report Card Metrics

- Objective: Broad metrics to track the status of fisheries in aggregate (back to 1993) (Following executive summary p.7).
  1. Real First-Wholesale revenue index
  2. Real First-Wholesale price index
  3. Real Effective Exchange rate index
  4. Alaska's effective share of pollock and cod catch
  5. Production Volume/Total catch
  6. Ex-vessel share of first-wholesale revenue
  7. AK resident share of shoreside ex-vessel value
  8. Share of shoreside value to top 5 communities
  9. Real first-wholesale value/fishing weeks

- Real value was relatively high with increased catch and product/catch, while real prices were low.
- Strength of the dollar putting downward pressure on prices.
- Significant share of global pollock and cod production.
- Ex-vessel/wholesale revenue share approx. at long-run average.
- Revenue per unit effort (fishing weeks) fairly high.
- Share of shoreside revenue to AK residents higher relative to early to mid-2000s. Revenues relatively concentrated in few key ports.

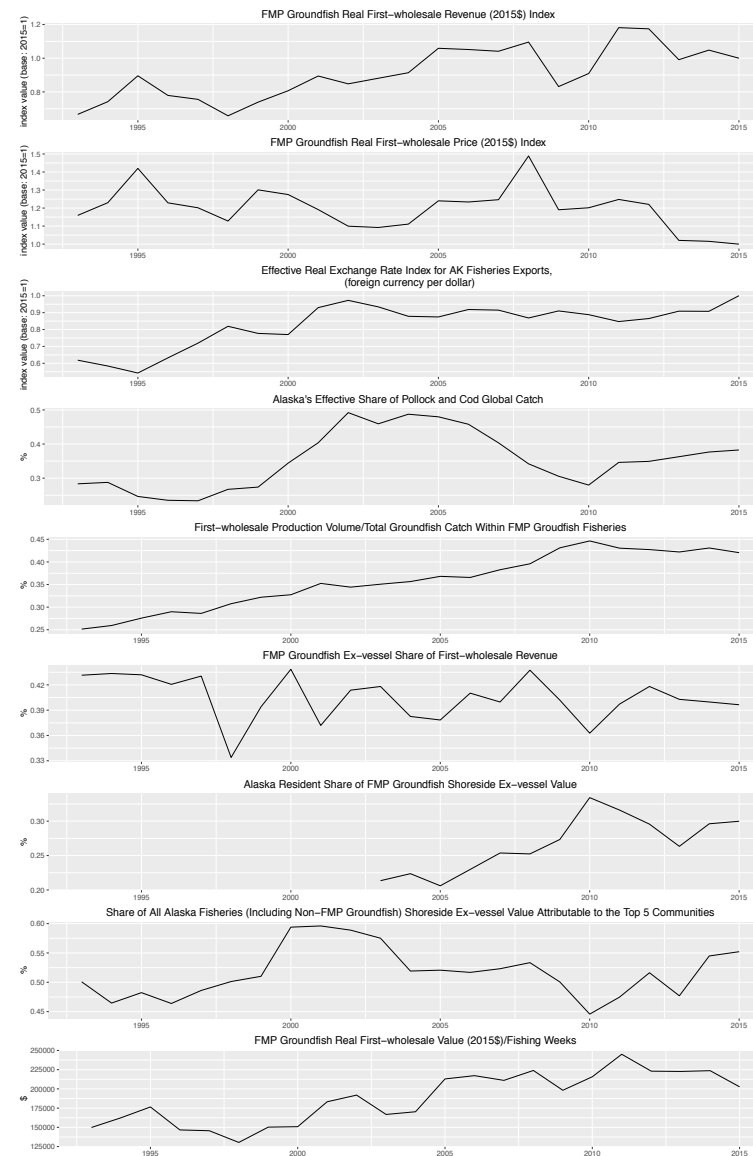


Figure 1.1: Economic Report Card Metrics.

# Alaska's FMP Groundfish Fisheries in 2015

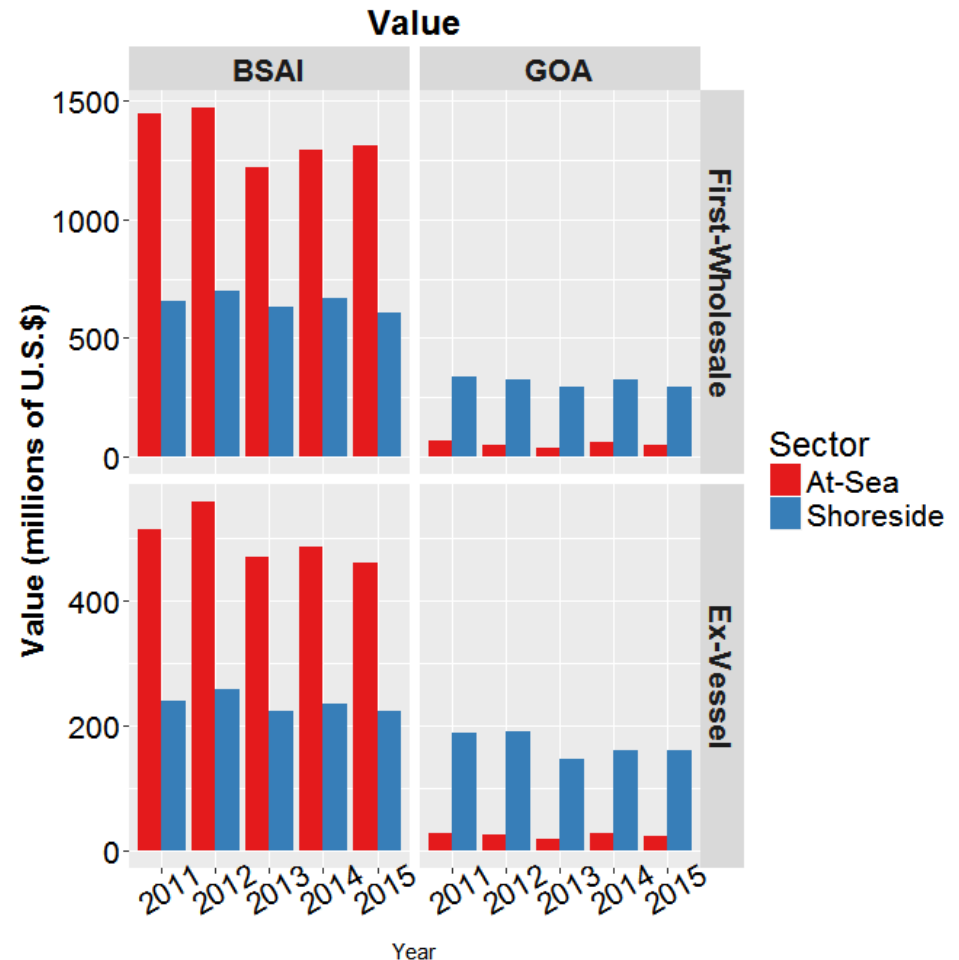
Total federal catch:  
2.24 million t

(no significant change)

Value decreased across  
regions and sectors

Wholesale value:  
\$2.26 billion (down 6.9%)

Ex-vessel value:  
\$896 million (down 4.1%)

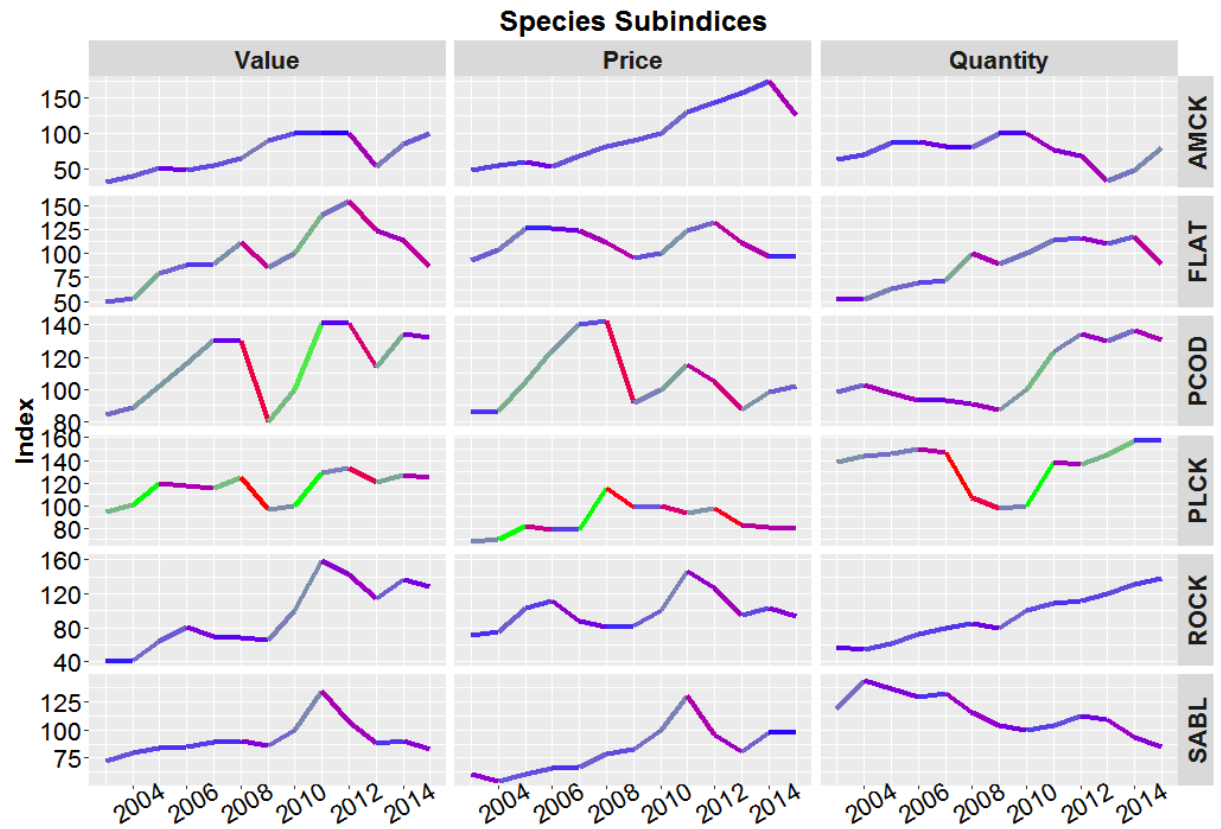


Values nominal (not adjusted for inflation)

Summary: For most species there weren't substantial price changes. Changes in value largely reflect changes in catch and production.

## Species

- Value decreases:
  - Flatfish (catch ↓)
  - yellowfin and arrowtooth
  - Sablefish (catch ↓)
  - Rockfish (price ↓)
- Value increased:
  - Atka Mackerel (catch ↑)
- Not a significant value change:
  - Pacific Cod
  - Pollock



(yr-on-yr % change)\*(share weight)

Values are nominal (not adjusted for inflation)

---

# Thanks!

Questions and comments to: [Ben.Fissel@noaa.gov](mailto:Ben.Fissel@noaa.gov)

